

15-065-01922-0000

KANSAS DRILLERS LOG

S. 24 T. 10S R. 24 ^{XX}W

API No. 15 —————
County Number

Loc. SE NE NW

County Graham

Operator
C-G Drilling Co.

Address
1107 Douglas Bldg, Wichita, KS 67202

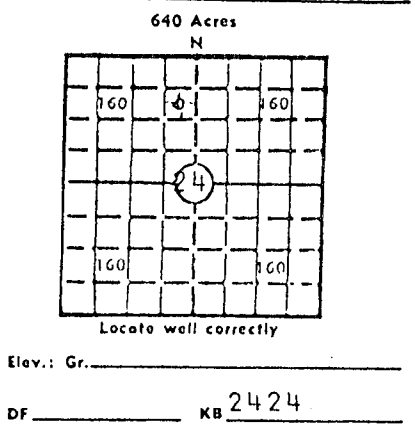
Well No. 2 Lease Name Knoll

Footage Location
990 feet from (N) ^{XX}line 2310 feet from ^{XX}(W) line

Principal Contractor C-G Drilling Co. Geologist J E Jespersen

Spud Date 10/22/62 Total Depth 4002 P.B.T.D.

Date Completed 11/10/62 Oil Purchaser Mobil Oil Corp



CASING RECORD

Report of all strings set — surface, intermediate, production, etc.

Purpose of string	Size hole drilled	Size casing set (in O.D.)	Weight lbs/ft.	Setting depth	Type cement	Sacks	Type and percent additives
Surface	12 1/4"	8 5/8"	28#	177.59	Common	135	Quickset
Production		5 1/2"	14#	4001'	Salt Sat	150	

LINER RECORD

PERFORATION RECORD

Top, ft.	Bottom, ft.	Sacks cement	Shots per ft.	Size & type	Depth interval

Size	Setting depth	Packer set at
2 7/8"	4008'	

ACID, FRACTURE, SHOT, CEMENT SQUEEZE RECORD

Amount and kind of material used	Depth interval treated

INITIAL PRODUCTION

Date of first production 12/6/62		Producing method (flowing, pumping, gas lift, etc.) Pumping			
RATE OF PRODUCTION PER 24 HOURS	Oil 100 bbls.	Gas MCF	Water 0 bbls.	Gas-oil ratio CFPB	
Disposition of gas (vented, used on lease or sold)			Producing interval(s)		

INSTRUCTIONS: As provided in KCC Rule 82-2-125, within 90 days after completion of a well, one completed copy of this Drillers Log shall be transmitted to the State Geological Survey of Kansas, 4150 Monroe Street, Wichita, Kansas 67209. Copies of this form are available from the Conservation Division, State Corporation Commission, 3830 So. Meridian (P.O. Box 17027), Wichita, Kansas 66217. Phone AC 316-522-2206. If confidential custody is desired, please note Rule 82-2-125. Drillers Logs will be on an open file in the Oil and Gas Division, State Geological Survey of Kansas, Lawrence, Kansas 66044.

15-065-01922-0000

DESIGNATE TYPE OF COMP.: OIL, GAS, DRY HOLE, SWDW, ETC.:
Oil

Operator

C-G Drilling Co., Inc.

Well No. 2	Lease Name Knoll
S 24 T 10 S R 25 ^{EX} W	

WELL LOG

Show all important zones of porosity and contents thereof; cored intervals, and all drill-stem tests, including depth interval tested, cushion used, time tool open, flowing and shut-in pressures, and recoveries.

SHOW GEOLOGICAL MARKERS, LOGS RUN, OR OTHER DESCRIPTIVE INFORMATION.

FORMATION DESCRIPTION, CONTENTS, ETC.	TOP	BOTTOM	NAME	DEPTH
SHALE	0	650		
SAND & SHALE	650	1150		
SHALE	1150	1630		
SAND	1630	1800		
RED BED	1800	2085		
ANHYDRITE	2085	2120		
SHALE & SHELLS	2120	2625		
SHALE & LIME	2625	2900		
LIME & SHALE	2900	3575		
LIME & RTD	3575	4002		
DST #1: 3748-3763' 30-60-30. REC 310' OC S/WTR, 780' S/WTR, IBHP 1380', FBHP 1290#, IFP 140#, FFP 565#.				
DST #2: 3766-3780' 30-30-30. REC 5' MUD. IBHP 70#, FBHP 40#, IFP 40#, FFP 40#.				
DST #3: 3855-3870' 30-90-30. REC 1080' GIP, 65' HOCM, 60' MUDDY OIL, 60' OIL, IBHP 1325#, FBHP 985#, IFP 60#, FFP 90#.				
DST #4: 3878-3895 30-60-30. REC 15' MUD. IBHP 55#, FBHP 45#, IFP 45#, FFP 45#.				
DST #5: 3891-3919 30-30-30. REC 7' MUD, IBHP 105#, FBHP 60#, IFP 55#, FFP 55#.				

USE ADDITIONAL SHEETS, IF NECESSARY, TO COMPLETE WELL RECORD.

Date Received	<i>Debra L Heersche</i>
	Debra L Heersche ^{Signature} Office Manager
	Title
	2/20/81
	Date