

ORIGINAL

KANSAS CORPORATION COMMISSION
OIL & GAS CONSERVATION DIVISION

Form ACO-1
June 2009

Form Must Be Typed
Form must be Signed
All blanks must be Filled

WELL COMPLETION FORM
WELL HISTORY - DESCRIPTION OF WELL & LEASE

OPERATOR: License # 33640
Name: Haas Petroleum, LLC
Address 1: 800 W. 47th, Suite # 716
Address 2: _____
City: Kansas City State: MO Zip: 64112 + _____
Contact Person: Mark Haas
Phone: (816) 531-5922
CONTRACTOR: License # 33557
Name: Skyy Drilling, LLC
Wellsite Geologist: Griffin Geological Resources, Inc.
Purchaser: Plains Marketing, LP

RECEIVED
KANSAS CORPORATION COMMISSION

JUN 10 2010

CONSERVATION DIVISION
WICHITA, KS

API No. 15 - 031-22586-00-00
Spot Description: SW SW NE SW Sec. 2 Twp. 22 S. R. 13 East West
3,975 Feet from North / South Line of Section
3,800 Feet from East / West Line of Section
Footages Calculated from Nearest Outside Section Corner:
 NE NW SE SW
County: Coffey
Lease Name: Wilson Well #: 1 HP
Field Name: Hatch South

Designate Type of Completion:
 New Well Re-Entry Workover
 Oil WSW SWD SLOW
 Gas D&A ENHR SIGW
 OG GSW Temp. Abd.
 CM (Coal Bed Methane)
 Cathodic Other (Core, Expl., etc.): _____

Producing Formation: _____
Elevation: Ground: 1131 Kelly Bushing: _____
Total Depth: 2204' Plug Back Total Depth: _____
Amount of Surface Pipe Set and Cemented at: 45 Feet
Multiple Stage Cementing Collar Used? Yes No
If yes, show depth set: _____ Feet
If Alternate II completion, cement circulated from: 0'
feet depth to: 45 w/ 35 sx cmt.

If Workover/Re-entry: Old Well Info as follows:
Operator: _____
Well Name: _____
Original Comp. Date: _____ Original Total Depth: _____
 Deepening Re-perf. Conv. to ENHR Conv. to SWD
 Conv. to GSW
 Plug Back: _____ Plug Back Total Depth _____
 Commingled Permit #: _____
 Dual Completion Permit #: _____
 SWD Permit #: _____
 ENHR Permit #: _____
 GSW Permit #: _____
January 15, 2010 January 21, 2010 January 22, 2010
Spud Date or Date Reached TD Completion Date or
Recompletion Date Recompletion Date

Drilling Fluid Management Plan
(Data must be collected from the Reserve Pit)
Chloride content: _____ ppm Fluid volume: _____ bbls
Dewatering method used: _____
Location of fluid disposal if hauled offsite: _____
Operator Name: _____
Lease Name: _____ License #: _____
Quarter _____ Sec. _____ Twp. _____ S. R. _____ East West
County: _____ Permit #: _____

INSTRUCTIONS: An original and two copies of this form shall be filed with the Kansas Corporation Commission, 130 S. Market - Room 2078, Wichita, Kansas 67202, within 120 days of the spud date, recompletion, workover or conversion of a well. Rule 82-3-130, 82-3-106 and 82-3-107 apply. Information of side two of this form will be held confidential for a period of 12 months if requested in writing and submitted with the form (see rule 82-3-107 for confidentiality in excess of 12 months). One copy of all wireline logs and geologist well report shall be attached with this form. ALL CEMENTING TICKETS MUST BE ATTACHED. Submit CP-4 form with all plugged wells. Submit CP-111 form with all temporarily abandoned wells.

AFFIDAVIT
I am the affiant and I hereby certify that all requirements of the statutes, rules and regulations promulgated to regulate the oil and gas industry have been fully complied with and the statements herein are complete and correct to the best of my knowledge.
Signature: _____
Title: Operator Date: 6/8/10

KCC Office Use ONLY
 Letter of Confidentiality Received
Date: _____
 Confidential Release Date: _____
 Wireline Log Received
 Geologist Report Received
 UIC Distribution
ALT I II III Approved by: DG Date: 6/8/10

Operator Name: Haas Petroleum, LLC Lease Name: Wilson Well #: 1 HP
 Sec. 2 Twp. 22 S. R. 13 East West County: Coffey

INSTRUCTIONS: Show important tops and base of formations penetrated. Detail all cores. Report all final copies of drill stems tests giving interval tested, time tool open and closed, flowing and shut-in pressures, whether shut-in pressure reached static level, hydrostatic pressures, bottom hole temperature, fluid recovery, and flow rates if gas to surface test, along with final chart(s). Attach extra sheet if more space is needed. Attach complete copy of all Electric Wire-line Logs surveyed. Attach final geological well site report.

Drill Stem Tests Taken <input type="checkbox"/> Yes <input checked="" type="checkbox"/> No <i>(Attach Additional Sheets)</i> Samples Sent to Geological Survey <input type="checkbox"/> Yes <input checked="" type="checkbox"/> No Cores Taken <input type="checkbox"/> Yes <input checked="" type="checkbox"/> No Electric Log Run <input checked="" type="checkbox"/> Yes <input type="checkbox"/> No Electric Log Submitted Electronically <input type="checkbox"/> Yes <input checked="" type="checkbox"/> No <i>(If no, Submit Copy)</i> List All E. Logs Run:	<input type="checkbox"/> Log Formation (Top), Depth and Datum <input type="checkbox"/> Sample Name Top Datum
--	---

CASING RECORD <input type="checkbox"/> New <input type="checkbox"/> Used							
Report all strings set-conductor, surface, intermediate, production, etc.							
Purpose of String	Size Hole Drilled	Size Casing Set (In O.D.)	Weight Lbs. / Ft.	Setting Depth	Type of Cement	# Sacks Used	Type and Percent Additives
Surface	12 1/4	8 5/8		46'	Class A	35	
Longstring	6 3/4	4 1/2		2204'	60/40 Poz	175	

ADDITIONAL CEMENTING / SQUEEZE RECORD				
Purpose:	Depth Top Bottom	Type of Cement	# Sacks Used	Type and Percent Additives
<input type="checkbox"/> Perforate <input type="checkbox"/> Protect Casing <input type="checkbox"/> Plug Back TD <input type="checkbox"/> Plug Off Zone				

Shots Per Foot	PERFORATION RECORD - Bridge Plugs Set/Type Specify Footage of Each Interval Perforated	Acid, Fracture, Shot, Cement Squeeze Record <i>(Amount and Kind of Material Used)</i>	Depth
	Open Hole		

RECEIVED
KANSAS CORPORATION COMMISSION

JUN 10 2010

CONSERVATION DIVISION
WICHITA, KS

TUBING RECORD: Size: _____ Set At: _____ Packer At: _____	Liner Run: <input type="checkbox"/> Yes <input type="checkbox"/> No
---	---

Date of First, Resumed Production, SWD or ENHR: _____	Producing Method: <input type="checkbox"/> Flowing <input type="checkbox"/> Pumping <input type="checkbox"/> Gas Lift <input type="checkbox"/> Other (Explain) _____
---	--

Estimated Production Per 24 Hours	Oil Bbls.	Gas Mcf	Water Bbls.	Gas-Oil Ratio	Gravity
-----------------------------------	-----------	---------	-------------	---------------	---------

DISPOSITION OF GAS: <input type="checkbox"/> Vented <input type="checkbox"/> Sold <input type="checkbox"/> Used on Lease <i>(If vented, Submit ACO-18.)</i>	METHOD OF COMPLETION: <input type="checkbox"/> Open Hole <input type="checkbox"/> Perf. <input type="checkbox"/> Dually Comp. <input type="checkbox"/> Commingled <i>(Submit ACO-5)</i> <i>(Submit ACO-4)</i> <input type="checkbox"/> Other (Specify) _____	PRODUCTION INTERVAL: _____ _____
---	---	--

Skyy Drilling, L.L.C.
800 W. 47th Street, Suite # 716
Kansas City, Missouri 64112
Office (816) 531-5922
Fax (816) 753-0140

Company: Haas Petroleum, LLC
800 W. 47th, Suite # 716
Kansas City, Missouri 64112

Lease: Wilson – Well # 1 HP
County: Coffey
Spot: SW-SW-NE-NW – Sec 2, Twp 22, S.R. 13 E
Spud Date: January 15, 2010
API: 15-031-22518-00-00
TD: 2204'

1/14/10: Started moving in Rig #3. Spot rig on location.
1/15/10: Finish moving in rig. Rig up. Dig drilling pits. Drill rat hole.
1/16/10: Start up. Drill 12 ¼ surface hole. Drill from 0' to 41' TD. At 41' TD cir
hole clean, trip our 12 ¼ bit, rig and ran 40' of 8 5/8 casing. Rig up
cementers & cement with 35 sacks. Plug down @ 12:00.
1/18/10: Start back up. Nipple up, trip in hole with 6 ¾ PDC bit. Drilled out
approx 5' cement, under surface @ 10:15 AM. Drilled from 40' to 1068'
1/19/10: Drilled from 1068' to 1990'. Top Miss@ 1805'. Trip out bit @ 1900'
1/20/10: Drilled from 1900' to 2125'.
1/21/10: Drilled from 2125' to 2204' TD. Simpson @ 2198 approx. AT TD short
trip 13 stands. Cir hole clean. Trip out, Log hole, shut down for evening.
1/22/10: Start up. Nipple down. Rig & ran 2193' of 4 ½ casing. Rig up cementers
and cemented with 175 sacks.

Total Footage 2204' @ \$12.00 Per Foot	\$26,448.00
Total Rig Time 16 Hours @ \$300.00 Per Hour	\$ 4,800.00
40' of 8 5/8 casing @ \$7.50 Per Foot	<u>\$ 300.00</u>
TOTAL	\$31,548.00

RECEIVED
KANSAS CORPORATION COMMISSION

JUN 10 2010

CONSERVATION DIVISION
WICHITA, KS



ENTERED

TICKET NUMBER 23935
 LOCATION EUREKA
 FOREMAN Rick Ledford

PO Box 884, Chanute, KS 66720
 620-431-9210 or 800-467-8676

FIELD TICKET & TREATMENT REPORT
 CEMENT

DATE	CUSTOMER #	WELL NAME & NUMBER	SECTION	TOWNSHIP	RANGE	COUNTY
1-16-10	3451	Wilson 2 HP	2	23	13E	Coffey
CUSTOMER Hess Petroleum LLC			SEBY ALCO			
MAILING ADDRESS 806 West 47th St 409						
CITY Kansas City	STATE Mo.	ZIP CODE 64112	TRUCK #	DRIVER	TRUCK #	DRIVER
			463	Shannon		
			479	John		

JOB TYPE surface HOLE SIZE 12 1/4" HOLE DEPTH 46' CASING SIZE & WEIGHT 8 5/8"
 CASING DEPTH 45' DRILL PIPE _____ TUBING _____ OTHER _____
 SLURRY WEIGHT 15# SLURRY VOL _____ WATER gal/sk 6.5 CEMENT LEFT in CASING 5'
 DISPLACEMENT 2.5 bbl/s DISPLACEMENT PSI _____ MIX PSI _____ RATE _____

REMARKS: Safety meeting- Rig up to 8 5/8" casing. Break circulation w/ 10 bbl fresh water. Mixed 35 sus class "A" cement w/ 27% cocoz + 22% gel @ 15#/gal. Displace w/ 2.5 bbl fresh water. Shut casing in w/ good cement returns to surface. Job complete. Rig down.

"Thank You"

ACCOUNT CODE	QUANTITY or UNITS	DESCRIPTION of SERVICES or PRODUCT	UNIT PRICE	TOTAL
54015	1	PUMP CHARGE	1680.00	1680.00
5406	30	MILEAGE	3.45	103.50
11045	35 sus	class "A" cement	12.70	444.50
1102	65#	27% cocoz	.71	46.15
1118A	65#	22% gel	.16	10.40
5402		tax mileage bulk tie	m/c	296.00
			RECEIVED	
			KANSAS CORPORATION COMMISSION	
			JUN 10 2010	
			CONSERVATION DIVISION	
			WICHITA, KS	
			Subtotal	1580.55
			SALES TAX	26.56
			ESTIMATED TOTAL	1607.11

Ravin 3737

232712

AUTHORIZATION Witnessed by Ben TITLE Talpastr / SEBY ALCO DATE _____



CONSOLIDATED
Oil Well Services, LLC



ENTERED

TICKET NUMBER 23937
LOCATION FURORA
FOREMAN Rick Ledford

PO Box 884, Chanute, KS 66720
620-431-9210 or 800-467-8676

FIELD TICKET & TREATMENT REPORT
CEMENT

DATE	CUSTOMER #	WELL NAME & NUMBER	SECTION	TOWNSHIP	RANGE	COUNTY
1-22-10	3451	Wilson 1 HP				Coffey
CUSTOMER		MAILING ADDRESS		TRUCK #		DRIVER
Haas Petroleum LLC		800 West 47th st 409		463		Shannon
CITY		STATE	ZIP CODE	543		Dave
Kansas City		Mo.	64112	437		Jim

JOB TYPE longstring HOLE SIZE 6 3/4" HOLE DEPTH 2205' CASING SIZE & WEIGHT 4 1/2"
 CASING DEPTH 2204' DRILL PIPE _____ TUBING _____ OTHER _____
 SLURRY WEIGHT 13.6* SLURRY VOL _____ WATER gal/sk 70 CEMENT LEFT in CASING 10' 55
 DISPLACEMENT 3.5 1/2 bbls DISPLACEMENT PSI 6000 ~~Rate~~ PSI 1000 RATE _____

REMARKS: Safety meeting- Rig up to 4 1/2" casing. Break circulation w/ 10 bbl
fresh water. Mixed 175 sks 60/40 Perm mix cement w/ 5" Kal-seal ^{0.40/sk}, 470
gal, 170 cacl2 + 1/2" phenaseal ^{0.40/sk} @ 13.6* ^{0.40/sk}. shut down, release 4 1/2" rubber
plug. Displace w/ 35 1/2 bbls fresh water. Final pump pressure 6000 PSI. Bump
plug to 1000 PSI. wait 2 minutes, release pressure, float + plug held. Good
circulation @ all times while cementing. Job complete. Rig down.

"Thank You"

ACCOUNT CODE	QUANTITY or UNITS	DESCRIPTION of SERVICES or PRODUCT	UNIT PRICE	TOTAL
5401	1	PUMP CHARGE	870.00	870.00
5406	30	MILEAGE	3.45	103.50
1131	175 sks	60/40 Perm mix cement	10.70	1872.50
1110A	825#	5" Kal-seal ^{0.40/sk}	.39	341.25
1118A	600#	470 gal	.16	96.00
1102	150#	170 cacl2	.71	106.50
1107A	85#	1/2" phenaseal ^{0.40/sk}	1.08	91.80
5407	7.53	tan mileage bulk tax	m/l	296.00
5502C	4 hrs	80 bbl VAR. TAX	94.00	376.00
1123	3000 gals	city water	19.00/1000	42.00
4404	1	4 1/2" top rubber plug	43.00	43.00
4310	1	baffle plate	25.00	25.00
			subtotal	4263.55
			SALES TAX	138.71
			ESTIMATED TOTAL	4402.32

RECEIVED
KANSAS CORPORATION COMMISSION

JUN 10 2010

CONSERVATION DIVISION
WICHITA, KS

Ravin 3737

232199

AUTHORIZATION Witnessed by Ben Hamill

TITLE Trafficker/B&S PRLLC

DATE _____

Griffin Geological Resources, Inc.

David B. Griffin, RG, President
1502 W. 27th Terrace
Lawrence, Kansas 66046

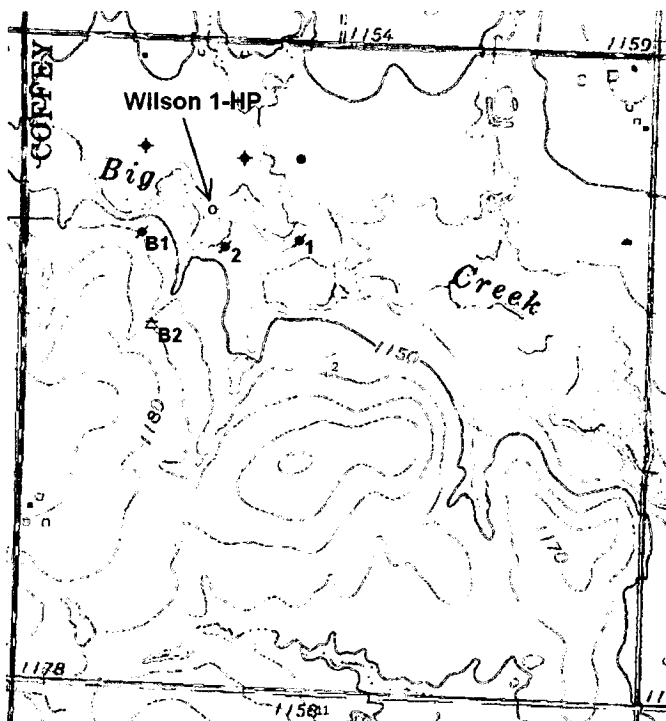
Ph. (785) 842-3665
Cell (785) 766-0099
Fax (785) 856-3935

January 26, 2010

Geological Wellsite Report

For: Wilson 1-HP
SW SW NE NW/4
3975' fsl, 3800' fel
Section 2, T22S – R13E
Coffey County, Kansas
Lat/Long: N38.167056
W-95.95324
API: 15-031-22518-00-00
Datum: KB 1147'
RTD: 2204', KB
Field: South Hatch
Status: 4½' Casing Set

Operator: Haas Petroleum, LLC
800 W. 47th St, Suite 716
Kansas City, MO 64112
License: 33640
Mark Haas, President



The following report on the subject well includes well information and detailed geological data based on microscopic examination of rotary drill cuttings from 1400' to a total depth of 2204' below kelly bushing (KB) reached on January 21, 2010. The Simpson sandstone is the primary objective, whereas the Burgess and Squirrel sandstones are secondary objectives. This report includes a sample log with drilling time, sample cuttings description, total gas measurements and geological tops. Subsea corrected geological sample tops were based on a KB datum elevation of 1147' with a GL elevation of 1140' above sea level obtained from a relative survey with Todd 2 (GL 1146').

Drilling Contr.: Skyy Drilling, Rig #3
Yates Center, Kansas, 66865
KS Operator License No.: 33557
Owner: Mark Haas
Tool Pusher: Ben Harrell

RECEIVED
KANSAS CORPORATION COMMISSION

JUN 10 2010

CONSERVATION DIVISION
WICHITA, KS

Commenced Drlg: Spud January 15, 2010, 12¼" Bit, Set 40' 8⁵/₈" Casing

Completed Drlg: January 21, 2010, Set 4½" Casing and Cemented on Jan. 22, 2010

Drilling Notes: 4½" Drill Pipe, One 6-blade PDC Bit, from 40' to 1900'
One button bit from 1900' to 2204'

Mud Program: Native fresh water mud to 1400', fresh water chemical gel mud from 1400' to TD,

Cement Co.: Consolidated Oil Well Service Co.
KS Operator License No.: 04996

Geological Supervision: David Griffin, RG, President of GGR, Inc., provided wellsite supervision periodically from Jan. 19 to Jan. 22, 2010. Samples microscopically examined from 1400' to 2204'.

Logs, Gas Detection, Cores, DST's: Compensated density and sidewall neutron, dual Induction, and micro resistivity open-hole logs were ran by Osage Wireline. MP 2300 total gas detection instrumentation was in use. No cores or drill stem tests were obtained for this well.

Geological Datums:

Haas Petroleum, LLC						Struc Comparison	
Wilson 1-HP SW SW NE NW4 Sec. 2-T22S-R13E Geological Tops						Brandt Oil Co.	
						Todd 2	
						NW SE NW4 Sec. 2-T22S-R13E	
Zones of Interest	Sample Tops		STRC COMP	Open-Hole Log Tops		GRN Log Tops	
	KB Elev 1147			KB Elev 1147		GL Elev 1146	
	Depth	Subsea		Depth	Subsea	Depth	Subsea
Douglas SS	na			612	535	612	534
Base Kansas City Group	na			1134	13	1134	12
Cherokee Group	1420	-273	+1	1422	-275	1420	-274
U. Squirrel SS,	1425	-278	0	1427	-280	1424	-278
Base SS	1431	-284	+4	1433	-286	1434	-288
L. Squirrel SS,	1495	-348	+1	1497	-350	1495	-349
Base SS	1523	-376	0	1525	-378	1522	-376
V-Shale	1534	-387	-4	1536	-389	1529	-383
Burgess SS,	1798	-651	-7	1800	-653	1790	-644
Base SS	1813	-666	-12	1816	-669	1800	-654
Mississippian LS	1813	-666	-8	1816	-669	1804	-658
Osage Chert Zone	1922	-775	+1	1926	-779	1922	-776
Northview Shale	2081	-934	+1	2084	-937	2081	-935
Kinderhook Shale	2125	-978	+4	2130	-983	2128	-982
Simpson SS	2197	-1050	-2	2200	-1053	2194	-1048
Total Depth	2204	-1057		2208	-1061	2199	-1053

RECEIVED
KANSAS CORPORATION COMMISSION

JUN 10 2010

Wilson 1-HP
Wellsite Geology Report
By David Griffin, RG
January 26, 2010

CONSERVATION DIVISION
WICHITA, KS

Structural Comparisons:

Structural comparison of subsea geological log tops for Wilson 1-HP indicates that the top of the Simpson sandstone primary objective is 2' lower (KB Samples) than in Todd 2 (former producer) lying approximately 360' to the south.

Description of Zones with Significant Oil Shows

Upper Squirrel Sandstone: 1425' to 1431', KB Samples

Sandstone, 50%, brown, very fine grained, silty, mostly good porosity, good oil odor, good show of brown oil that readily bleeds and rinses from samples, good bleeding in sample bag, few gas bubbles, good oil scum on pit; Siltstone, 50%, coarse silt, very light gray to gray, hard limey to soft. ~25 units of gas above background. Deep Induction RT readings are from 9.5. to 12 ohm-m. Micro log indicates low permeability. Possibly of commercial value and worth testing.

Lower Squirrel Sandstone: 1495' to 1506', KB Samples

Sandstone, 60%, dark gray to gray, very fine grained, silty, "dirty", very micaceous and carbonaceous, fair to good porosity, slight oil odor, fair to good show of brown to black heavy oil, fair to good bleeding in sample bag, fair to good show rinsing from samples, good oil scum on pit; Siltstone, 50%, very light gray to gray, soft to hard. ~25 units of total gas above background. Deep induction RT readings from 7 to 8.5 ohm-m. Probably of little commercial value and not worth testing.

Burgess Sandstone: 1798' to 1813', KB Samples

Sandstone, 30% to 60%, light tan to light brown with minor patchy off-white (10% to 20%), fine to minor medium grained clean quartz, well sorted, sub-rounded, fair to good porosity, very good oil odor, good show of light gravity oil, few streams of oil rinsing from sample, slight bleeding in sample bag, 30% to 40% dull to medium fluorescence; Shale 40% to 70% interbeds, silty, gray. No gas readings above background. Good deep induction RT readings from 17 to 18 ohm-m. Micro log indicates good permeability and mud cake. This zone has good potential and should be tested.

Simpson Sandstone: 2197' to 2200', KB, CFS Samples

Sandstone, 70% of sample, mostly very light grayish-tan with light brown, very fine to fine grained clean quartz, well sorted, sub-rounded, strong oil odor, 20% of sample is light brown, fair to good porosity of which 5% is friable to brown sugar consistency, fair to very good show of brown oil (25 to 30 gravity?), 50% of sample is very light grayish-tan, glassy with poor porosity and with at best a slight show of oil, no visible bleeding in sample bag, 20% dull to medium fluorescence. No gas readings above background. Zone was too near TD to be logged. This zone has good potential and should be tested.

RECEIVED
KANSAS CORPORATION COMMISSION

Page 3 of 5

JUN 10 2010

CONSERVATION DIVISION
WICHITA, KS

Wilson 1-HP
Wellsite Geology Report
By David Griffin, RG
January 26, 2010

Simpson Sandstone: 2200' to 2202', KB, CFS Samples

Sandstone, 15% of sample, 5% is light brown with good show of brown oil, 5% is light, gray, glassy with poor porosity and no show of oil, 5% is loose sand grains with little oil residue, no visible bleeding in sample bag, 5% dull to medium fluorescence. No gas readings above background. Zone was too near TD to be logged. This zone has good potential and should be tested.

Simpson Sandstone: 2202' to 2204', KB, CFS Samples

Sandstone, 60% of sample, 50% is loose fine to minor medium quartz sand grains, good porosity, half of these grains float due to oil residue of high surface tension, fair show of tar specks on floating grains, 10% is light gray and glassy same as above. Slight show of oil in sample, but it is probably mostly washed out, no visible bleeding in sample bag, 50% dull to medium fluorescence in floating grains. No gas readings above background. Zone was too near TD to be logged. This zone also has good potential and should be tested.

Summary:

Wilson 1-HP had a good show of free brown oil in the Upper Squirrel sandstone from 1425' to 1431', KB Samples, fair to good show of dark brown to black oil in the Lower Squirrel "dirty" sandstone from 1495' to 1523', KB Samples, a good show of light gravity oil in the Burgess sandstone from 1798' to 1813', KB Samples and a good show of oil in the Simpson sandstone from 2197' to 2204', KB Samples. The top of the Simpson sandstone in Wilson 1-HP was 2' lower than in Todd 2, a former Simpson producer lying approximately 360' to the south. The well was open-hole logged. Based on the good shows of free oil in the Simpson, Burgess and Upper Squirrel sandstones, the operator set and cemented production casing.

The open-hole log tops were approximately 3' to 4' lower than the sample (driller) tops even though both had zero at KB. The production casing tagged bottom and the pipe tally agreed with the sample tops. The logger was asked if the difference could be attributed to a worn depth counter wheel, which is being looked at. Therefore, at this point the sample tops are probably more accurate and are currently used for structural evaluation.

RECEIVED
KANSAS CORPORATION COMMISSION

JUN 10 2010

CONSERVATION DIVISION
WICHITA, KS

Recommendations:

Initially, the Simpson sandstone should be tested through open-hole by milling out the float shoe and cleaning out the hole to RTD. It is not recommended that it be deepened much beyond the rotary total depth due to the presence of specks of tar in the bottom most Simpson sandstone samples. For the Burgess sandstone, it is recommended that perforations be placed in the top 4', from approximately 1799' to 1803', KB Samples, and tested naturally. A good mud cake is present and mud acid treatment may be necessary to open up the formation permeability near the well bore. If inadequate fluid is indicated from swabbing, it should be frac'd and re-tested. For the Upper Squirrel sandstone, it is recommended that perforations be placed from 1426' to 1430', frac'd and tested. A cased hole log should be ran to compare structural tops and to aid in picking perforations in the Cherokee sandstones.

Respectfully Submitted,



David B. Griffin, Licensed RG, President
Griffin Geological Resources, Inc.

Attachments: Sample Log with Drilling Time and Total Gas Measurements

RECEIVED
KANSAS CORPORATION COMMISSION

JUN 10 2010

CONSERVATION DIVISION
WICHITA, KS

Penetration Rate
Min./Foot

Total Gas
Units

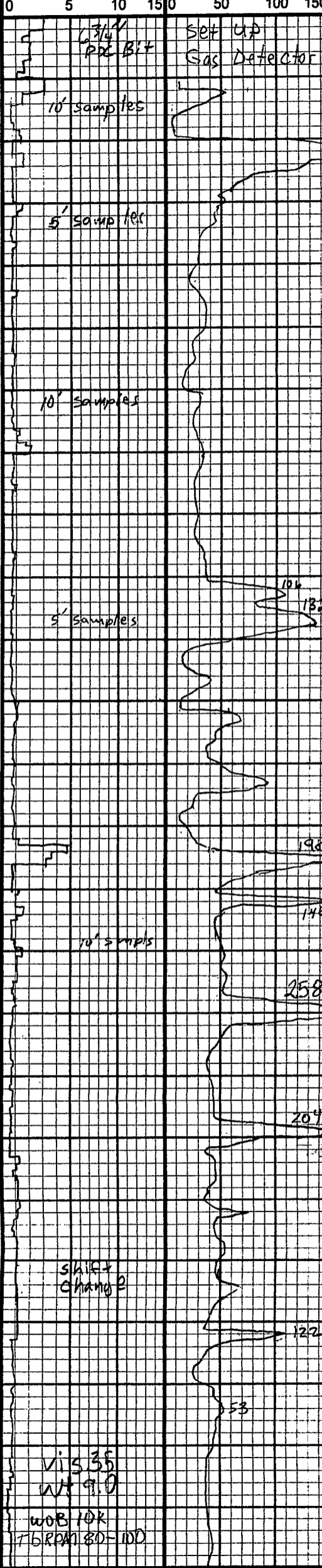
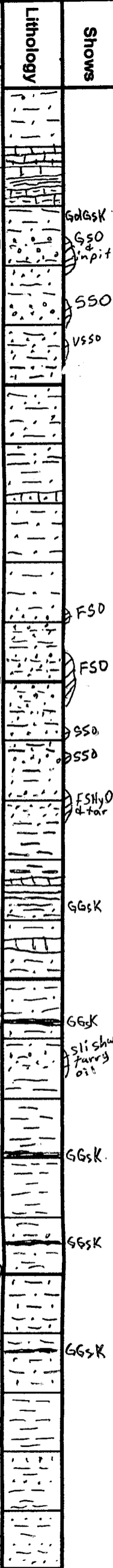
Location: SWSWNE NW4
3975 fsl, 3800'fe, SEC2-T21S-R13E

Datum/Elev.
KB 1147

Sample Descriptions

Tops/Remarks

1400
1-19-10
2 PM



Per: Haas Petroleum, LLC
Contr: Sky Drilling, Rig 3
LS, gy, vf-fxn, fr φ, NS
sh, blk
SS, ss, shaley
sh, dkgy, -bk
siltst, ltgy, v. soft, gummy
SS, Bn, 50%, vfgn, silty, gdφ, gdodr,
GSD, GSO in pit ~ 2ft 25ft?, gd bld
in bag, FSD rinses, POSS, pay Bn
siltst, hd, gy
SS, dk Bn, vfgn, silty, gy mottling limey,
pr-fr φ, FSHy Oil (blk), pr-fr bled,
sli sh oil in smpl Bag.
Silt, vlt gy, ss lam, gy, silty, carb
USSO, pr φ
sh, gy, sdy, silty, soft, NS
sh, gy, clayey
ss, gy, limey, pr φ, NS
sh, gy, v. carb & silty, min pyr.
AA
60% "dirty"
SS, dk gy-gy, silty, v. m+c, vfgn, silty,
fr-gd φ, sli odr, FSD (dk-bn-bld)
fr bld in bag, fr oil in pit (500-05 sm)
sh, gy, sdy, silty
SS, AA, fr-gd sh hbn oil bled & rinse,
50% fr-gd φ,
sh, gy, sdy, silty, abu m+c, 20-30%
SS lam, v-f-t, sli-frsh, no bld
60%
SS, gy, v-f-f, fr-gd φ, No odr, FSHy Oil,
and tar, tempes gd sat.
sh, ltgn-gy to dkgy, cly
198
LS, gy
sh, blk, coaly
Silt, vltgy, soft
146
LS, ltgy to tan, micrite,
10' samples
Siltst, ltgy
258
coal, + trace, little in smpl
SS, 20%, ltgy, v-f-gn, pr-fr φ, No odr,
Sli sh. Trj. oil, No bled
sh, ltgy - dkgy
204
sh, ltgy-gy, minor blk, fr. coal
sh, gy, clayey
sh, gy, min. silt + m+c
+ coal
sh, gy, silty, m+c
122
sh, dkgy, silty, m+c, streak of ss
vfgn, fr φ, no coal in smpl
sh, vari-color, red, gm, tan, gy,
vltgy, dkgy
53
sh, mostly ltgn + red, 10% ss limey
v f, glauc, pr φ, NS
sh, gy, gm, red, 30% limey @ conc. tan
sandys

Cherokee
1420 (-273)
U. Sq SS
1425 (-278)

RECEIVED
KANSAS CORPORATION COMMISS
JUN 10 2010
CONSERVATION DIVISIO
WICHITA, KS

L. Sq. SS
1495 (-348)

v-shale
1534 (-387)

5 PM

1450

1500

1550

1600
8 PM

9:30P
1650

VIS 35
WT 9.0

WOB 10K
FB RPM 80-100

