

ORIGINAL

SIDE ONE

STATE CORPORATION COMMISSION OF KANSAS  
OIL & GAS CONSERVATION DIVISION  
WELL COMPLETION FORM  
ACO-1 WELL HISTORY  
DESCRIPTION OF WELL AND LEASE

API NO. 15- 199-20,200 -00-00

County Wallace

NW SE SW SE Sec. 23 Twp. 12S Rge. 40 x East West

495 Ft. North from Southeast Corner of Section

1815 Ft. West from Southeast Corner of Section  
(NOTE: Locate well in section plat below.)

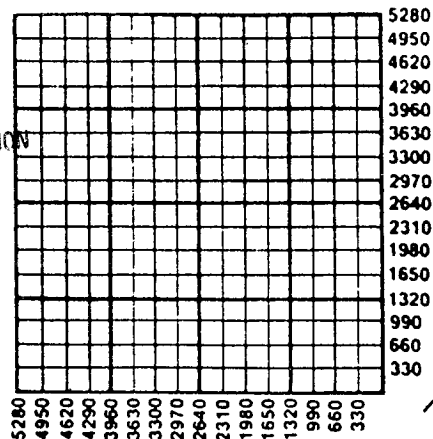
Lease Name Kirkham Well # 23-1

Field Name

Producing Formation

Elevation: Ground 3530' KB 3537'

Total Depth 5080' PBTD



Amount of Surface Pipe Set and Cemented at 363 Feet

Multiple Stage Cementing Collar Used? Yes x No

If yes, show depth set Feet

If Alternate II completion, cement circulated from

feet depth to w/ sx cmt.

Operator: License # 30575

Name: Holden Energy Corporation

Address Lincoln Center, Suite #600

City/State/Zip Ardmore, OK 73401

Purchaser:

Operator Contact Person: Harold H. Holden

Phone (405) -226-3960

Contractor: Name: Emphasis Oil Operations

License: 8241

Wellsite Geologist: Bill Kendall

Designate Type of Completion

x New Well Re-Entry Workover

Oil SWD Temp. Abd.

Gas Inj Delayed Comp.

x Dry Other (Core, Water Supply, etc.)

If OMMO: old well info as follows:

Operator:

Well Name:

Comp. Date Old Total Depth

Drilling Method:

x Mud Rotary Air Rotary Cable

5/30/91 6/8/91

Spud Date Date Reached TD Completion Date

RECEIVED  
STATE CORPORATION COMMISSION  
06-27-1991  
JUN 27 1991  
CONSERVATION DIVISION  
Wichita, Kansas

INSTRUCTIONS: This form shall be completed in triplicate and filed with the Kansas Corporation Commission, 200 Colorado Derby Building, Wichita, Kansas 67202, within 120 days of the spud date of any well. Rule 82-3-130, 82-3-107 and 82-3-106 apply. Information on side two of this form will be held confidential for a period of 12 months if requested in writing and submitted with the form. See rule 82-3-107 for confidentiality in excess of 12 months. One copy of all wireline logs and drillers time log shall be attached with this form. ALL CEMENTING TICKETS MUST BE ATTACHED. Submit CP-4 form with all plugged wells. Submit CP-111 form with all temporarily abandoned wells. Any recompletion, workover or conversion of a well requires filing of ACO-2 within 120 days from commencement date of such work.

All requirements of the statutes, rules and regulations promulgated to regulate the oil and gas industry have been fully complied with and the statements herein are complete and correct to the best of my knowledge.

Signature

Title Production Superintendent Date 6/18/91

Subscribed and sworn to before me this 18 day of June, 1991.

Notary Public Jean Touchman

Date Commission Expires October 13, 1993

K.C.C. OFFICE USE ONLY

F Letter of Confidentiality Attached

C  Wireline Log Received

C  Drillers Timelog Received

Distribution

KCC  SWD/Rep  NGPA

KGS  Plug  Other

(Specify)

**SIDE TWO**

Operator Name Holden Energy Corporation Lease Name Kirkham Well # 23-1  
 Sec. 23 Twp. 12S Rge. 40  East County Wallace  
 West

**INSTRUCTIONS:** Show important tops and base of formations penetrated. Detail all cores. Report all drill stem tests giving interval tested, time tool open and closed, flowing and shut-in pressures, whether shut-in pressure reached static level, hydrostatic pressures, bottom hole temperature, fluid recovery, and flow rates if gas to surface during test. Attach extra sheet if more space is needed. Attach copy of log.

Drill Stem Tests Taken  Yes  No  
 (Attach Additional Sheets.)  
 Samples Sent to Geological Survey  Yes  No  
 Cores Taken  Yes  No  
 Electric Log Run  Yes  No  
 (Submit Copy.)

Formation Description		
Name	Top	Bottom
Topeka	3782	4006
Heebner	4006	4087
Lansing/KC	4087	4480
Marmaton	4480	4613
Cherokee	4613	4724
Atoka	4724	4854
Morrow	4854	4994
Mississippi	4994	5088 T.D.

**CASING RECORD**  New  Used  
 Report all strings set-conductor, surface, intermediate, production, etc.

Purpose of String	Size Hole Drilled	Size Casing Set (In O.D.)	Weight Lbs./Ft.	Setting Depth	Type of Cement	# Sacks Used	Type and Percent Additives
Surface	12 1/4	8 5/8	24#	363.6	60/40 Poz 2% Ge1 3% CC	225	

PERFORATION RECORD		Acid, Fracture, Shot, Cement Squeeze Record	
Shots Per Foot	Specify Footage of Each Interval Perforated	(Amount and Kind of Material Used)	Depth

**TUBING RECORD** Size Set At Packer At Liner Run  Yes  No

Date of First Production Producing Method  Flowing  Pumping  Gas Lift  Other (Explain)  
 Estimated Production Per 24 Hours Oil Bbls. Gas Mcf Water Bbls. Gas-Oil Ratio Gravity

Disposition of Gas:  Vented  Sold  Used on Lease (If vented, submit ACO-18.)  
 METHOD OF COMPLETION:  Open Hole  Perforation  Dually Completed  Commingled  
 Other (Specify) \_\_\_\_\_



DISTRICT Hays, Ks

DATE 6-8-91

TO: HALLIBURTON SERVICES YOU ARE HEREBY REQUESTED TO FURNISH EQUIPMENT AND SERVICEMEN TO DELIVER AND OPERATE THE SAME AS AN INDEPENDENT CONTRACTOR TO: Holden Energy Corporation (CUSTOMER) AND DELIVER AND SELL PRODUCTS, SUPPLIES, AND MATERIALS FOR THE PURPOSE OF SERVICING

WELL NO. #23-1 LEASE Kirkham SEC. 23 TWP. 12<sup>S</sup> RANGE 40<sup>W</sup>

FIELD Wildcat COUNTY Wallace STATE Ks OWNED BY Holden Energy Corp.

THE FOLLOWING INFORMATION WAS FURNISHED BY THE CUSTOMER OR HIS AGENT

FORMATION NAME \_\_\_\_\_ TYPE \_\_\_\_\_  
FORMATION THICKNESS \_\_\_\_\_ FROM \_\_\_\_\_ TO \_\_\_\_\_  
PACKER: TYPE \_\_\_\_\_ SET AT \_\_\_\_\_  
TOTAL DEPTH 5080' MUD WEIGHT \_\_\_\_\_  
BORE HOLE 7 7/8"  
INITIAL PROD: OIL \_\_\_\_\_ BPD, H<sub>2</sub>O \_\_\_\_\_ BPD, GAS \_\_\_\_\_ MCF  
PRESENT PROD: OIL \_\_\_\_\_ BPD, H<sub>2</sub>O \_\_\_\_\_ BPD, GAS \_\_\_\_\_ MCF

	NEW USED	WEIGHT	SIZE	FROM	TO	MAX. ALLOW. P.S.I.
CASING			<u>8 5/8"</u>	<u>KB</u>	<u>363'</u>	
LINER						
TUBING						
OPEN HOLE			<u>7 7/8"</u>	<u>363'</u>	<u>5080'</u>	SHOTS/FT.
PERFORATIONS						
PERFORATIONS						
PERFORATIONS						

PREVIOUS TREATMENT: DATE \_\_\_\_\_ TYPE \_\_\_\_\_ MATERIALS \_\_\_\_\_

TREATMENT INSTRUCTIONS: TREAT THRU TUBING  ANNULUS  CASING  TUBING/ANNULUS  HYDRAULIC HORSEPOWER ORDERED \_\_\_\_\_

Plug to Abandon w/ 200 sks 60/40 69 Gel - 1<sup>st</sup> plug @ 200' w/ 25 sks.  
2<sup>nd</sup> plug @ 1850' w/ 100 sks & 1 sk. Floccle - 3<sup>rd</sup> plug @ 400' w/ 40 - sks. - 4<sup>th</sup> plug @ 40' w/ 10 sks.  
10 sks Mouse hole - 15 sks Rethole -

CUSTOMER OR HIS AGENT WARRANTS THE WELL IS IN PROPER CONDITION TO RECEIVE THE PRODUCTS, SUPPLIES, MATERIALS, AND SERVICES

As consideration, the above-named Customer agrees: THIS CONTRACT MUST BE SIGNED BEFORE WORK IS COMMENCED

- a) To pay Halliburton in accord with the rates and terms stated in Halliburton's current price list. Invoices are payable NET by the 20th of the following month after date of invoice. Upon Customer's default in payment of Customer's account by the last day of the month following the month in which the invoice is dated, Customer agrees to pay interest thereon after default at the highest lawful contract rate applicable, but never to exceed 18% per annum. In the event it becomes necessary to employ attorneys to enforce collection of said account, Customer agrees to pay all collection costs and attorney fees in the amount of 20% of the amount of the unpaid account.
- b) To defend, indemnify, release and hold harmless Halliburton, its divisions, subsidiaries, parent and affiliated companies and the officers, directors, employees, agents and servants of all of them from and against any claims, liability, expenses, attorneys fees, and costs of defense to the extent permitted by law for:
  1. Damage to property owned by, in the possession of, or leased by Customer, and/or the well owner (if different from Customer), including, but not limited to, surface and subsurface damage. The term "well owner" shall include working and royalty interest owners.
  2. Reservoir, formation, or well loss or damage, subsurface trespass or any action in the nature thereof.
  3. Personal injury or death or property damage (including, but not limited to, damage to the reservoir, formation or well), or any damages whatsoever, growing out of or in any way connected with or resulting from pollution, subsurface pressure, losing control of the well and/or a well blowout or the use of radioactive material.

The defense, indemnity, release and hold harmless obligations of Customer provided for in this Section b) and Section c) below shall apply to claims or liability even if caused or contributed to by Halliburton's negligence, strict liability, or the unseaworthiness of any vessel owned, operated, or furnished by Halliburton or any defect in the data, products, supplies, materials, or equipment of Halliburton whether in the preparation, design, manufacture, distribution, or marketing thereof, or from a failure to warn any person of such defect. Such defense, indemnity, release and hold harmless obligations of Customer shall not apply where the claims or liability are caused by the gross negligence or willful misconduct of Halliburton. The term "Halliburton" as used in said Sections b) and c) shall mean Halliburton, its divisions, subsidiaries, parent and affiliated companies, and the officers, directors, employees, agents and servants of all of them.

- c) That because of the uncertainty of variable well conditions and the necessity of relying on facts and supporting services furnished by others, Halliburton is unable to guarantee the effectiveness of the products, supplies or materials, nor the results of any treatment or service, nor the accuracy of any chart interpretation, research analysis, job recommendation or other data furnished by Halliburton. Halliburton personnel will use their best efforts in gathering such information and their best judgment in interpreting it, but Customer agrees that Halliburton shall not be liable for and Customer shall indemnify Halliburton against any damages arising from the use of such information.
- d) That Halliburton warrants only title to the products, supplies and materials and that the same are free from defects in workmanship and materials. THERE ARE NO WARRANTIES, EXPRESS OR IMPLIED, OF MERCHANTABILITY, FITNESS OR OTHERWISE WHICH EXTEND BEYOND THOSE STATED IN THE IMMEDIATELY PRECEDING SENTENCE. Halliburton's liability and Customer's exclusive remedy in any cause of action (whether in contract, tort, breach of warranty or otherwise) arising out of the sale or use of any products, supplies or materials is expressly limited to the replacement of such products, supplies or materials on their return to Halliburton or, at Halliburton's option, to the allowance to the Customer of credit for the cost of such items. In no event shall Halliburton be liable for special, incidental, indirect, punitive or consequential damages.
- e) That Customer shall, at its risk and expense, attempt to recover any Halliburton equipment, tools or instruments which are lost in the well and if such equipment, tools or instruments are not recovered, Customer shall pay Halliburton its replacement cost unless such loss is due to the sole negligence of Halliburton. If Halliburton equipment, tools or instruments are damaged in the well, Customer shall pay Halliburton the lesser of its replacement cost or the cost of repairs unless such damage is caused by the sole negligence of Halliburton. In the case of equipment, tools or instruments for marine operations, Customer shall, in addition to the foregoing, be fully responsible for loss of or damage to any of Halliburton's equipment, tools or instruments which occurs at any time after delivery to Customer at the landing until returned to the landing, unless such loss or damage is caused by the sole negligence of Halliburton.
- f) To waive the provisions of the Deceptive Trade Practices - Consumer Protection Act, to the extent permitted by law.
- g) That this contract shall be governed by the law of the state where services are performed or materials are furnished.
- h) That Halliburton shall not be bound by any changes or modifications in this contract, except where such change or modification is made in writing by a duly authorized executive officer of Halliburton.

JUN 27 1991

I HAVE READ AND UNDERSTAND THIS CONTRACT AND REPRESENT THAT I AM AUTHORIZED TO SIGN THE SAME AS CUSTOMER'S AGENT.

CONSIDERED BY CUSTOMER  
VICTOR M. ...

SIGNED [Signature] CUSTOMER

DATE 6-8-91

TIME 1500 A.M. P.M.

We certify that the Fair Labor Standards Act of 1938, as amended, has been complied with in the production of goods and/or with respect to services furnished under this contract.

CUSTOMER

CUSTOMER: Helder Energy Corporation Lease Kitchman

WELL NO. 23-1

JOB TYPE

Plug to Abandon DATE 6-8-91

WELL DATA

FIELD Wilcat SEC. 23 TWP. 12S RNG. 40W COUNTY Wallace STATE Ks.
FORMATION NAME TYPE
FORMATION THICKNESS FROM TO
INITIAL PROD: OIL BPD. WATER BPD. GAS MCFD
PRESENT PROD: OIL BPD. WATER BPD. GAS MCFD
COMPLETION DATE MUD TYPE MUD WT.
PACKER TYPE SET AT
BOTTOM HOLE TEMP. PRESSURE
MISC. DATA TOTAL DEPTH 5080'

Table with columns: NEW USED, WEIGHT, SIZE, FROM, TO, MAXIMUM PSI ALLOWABLE. Rows: CASING (8 5/8", KB, 363), LINER, TUBING (7 7/8", 363, 5080'), OPEN HOLE, PERFORATIONS.

JOB DATA

Table with columns: CALLED OUT, ON LOCATION, JOB STARTED, JOB COMPLETED. Includes dates and times for 6-8-91.

TOOLS AND ACCESSORIES

Table with columns: TYPE AND SIZE, QTY., MAKE. Includes items like FLOAT COLLAR, GUIDE SHOE, CENTRALIZERS, BOTTOM PLUG, TOP PLUG (1A-10, 8 5/8", 1ea, Hako), HEAD, PACKER, OTHER.

PERSONNEL AND SERVICE UNITS

Table with columns: NAME, UNIT NO. & TYPE, LOCATION. Includes E. Reynolds, E. Gomez, K. Legg.

MATERIALS

TREAT. FLUID DENSITY LB/GAL-API
DISPL. FLUID DENISTY LB/GAL-API
PROP. TYPE SIZE LB.
ACID TYPE GAL. %
SURFACTANT TYPE GAL. IN.
NE AGENT TYPE GAL. IN.
FLUID LOSS ADD. TYPE GAL.-LB. IN.
GELLING AGENT TYPE GAL.-LB. IN.
FRIC. RED. AGENT TYPE GAL.-LB. IN.
BREAKER TYPE GAL.-LB. IN.
BLOCKING AGENT TYPE GAL.-LB.
PERFPAC BALLS TYPE QTY.
OTHER

DEPARTMENT Cementing
DESCRIPTION OF JOB Plug to Abandon

JOB DONE THRU: TUBING [X] CASING [ ] ANNULUS [ ] TBG/ANN. [ ]

CUSTOMER REPRESENTATIVE [Signature]
HALLIBURTON OPERATOR [Signature] COPIES REQUESTED

CEMENT DATA

Table with columns: STAGE, NUMBER OF SACKS, CEMENT, BRAND, BULK SACKED, ADDITIVES, YIELD CU.FT./SK., MIXED LBS./GAL. Includes entry for 200 sacks of 60/40 cement.

PRESSURES IN PSI

SUMMARY

VOLUMES

CIRCULATING DISPLACEMENT PRES LUSH: BBL on 10.0-10.0-5.0 TYPE Water
BREAKDOWN MAXIMUM LOAD & BKDN: BBL-GAL. PAD: BBL-GAL.
AVERAGE FRACTURE GRADIENT TREATMENT: BBL-GAL. DISPL: BBL on 36.5-15.2-6.3
SHUT-IN: INSTANT 5-MIN 15-MIN. CEMENT SLURRY: BBL on 58.4
TOTAL VOLUME: BBL-GAL.
REMARKS See Job log
Thank you

JUN 27 1991

CONCRETE DIVISION WICHITA, KANSAS

CUSTOMER



**JOB LOG**

WELL NO. #23-1 LEASE Kirkham

TICKET NO. 051523-X

15-199-20200-00-09

CUSTOMER Holden Energy Corp.  
JOB TYPE Plug to Abandon (New)

PAGE NO. #1 of 1  
DATE 6-8-91

FORM 2013 R-2

CHART NO.	TIME	RATE (BPM)	VOLUME (BBL) (GAL)	PUMPS		PRESSURE (PSI)		DESCRIPTION OF OPERATION AND MATERIALS
				T	C	TUBING	SPRINGS	
	1045							DP
	1440							Called out - Job ready ASAP ON Loc. - Reg. ASAP - Rig lay down D.C. Setup Equip.
	1520							Rig Start plug Stds in hole
	1557							Plug Stds @ 2600' for 1 <sup>st</sup> plug - Rig Circ. hole
	1623							Hook up to P T
	1626	4.0	10.0				200	Start 10bbl water
	1628	4.0	7.3				200	Start mixing 25 sks. 60/40-68 Gel
	1630	4.0	3.5				100	Finish mixing - Start 3 1/2 bbl. water
	1631	5.0	31.5				75	Start mud disp
	1636						0	Plug down - Rig lay down DP
	1704							Plug Stds @ 1850' for 2 <sup>nd</sup> plug - Rig fill hole
	1710	4.0	10.0				125	Start 10bbl water
	1713	5.0	29.2				100	Start mixing 100 sks. 60/40-68 Gel w/ SR Floccle
	1719	5.0	3.5				100	Finish mixing - Start 3 1/2 bbl. water
	1720	5.0	15.2				50	Start mud disp.
	1723						0	Plug down - Rig lay down DP
	1806							DP @ 400' - for 3 <sup>rd</sup> plug - Rig fill hole
	1810	4.0	5.0				50	Start 5bbl. water
	1812	4.0	11.7				50	Start mixing 40 sks. 60/40-68 Gel
	1814	4.0	2.9				0	Finish mixing - Start spacer & disp.
	1815							Plug down - Rig lay down DP
	1833							DP out of hole - Break Kelly
	1850							Push 8 5/8" Plug down 40' Rig lay down Kelly - Rat & Mouse hole
	1900	3.0	2.9				0	Start mixing 10 sks. for 40' Plug
	1902	3.0	2.9				0	Start " 10 sks " Mouse hole
	1905	3.0	4.4				0	Start " 15 sks " Rat hole
	1908							Plug down
	1920							Job Completed

RECEIVED  
STATE CORPORATION COMMISSION

Thank you  
Eldon - Reut - Ed

JUN 27 1991

CONSERVATION DIVISION  
WICHITA, KANSAS

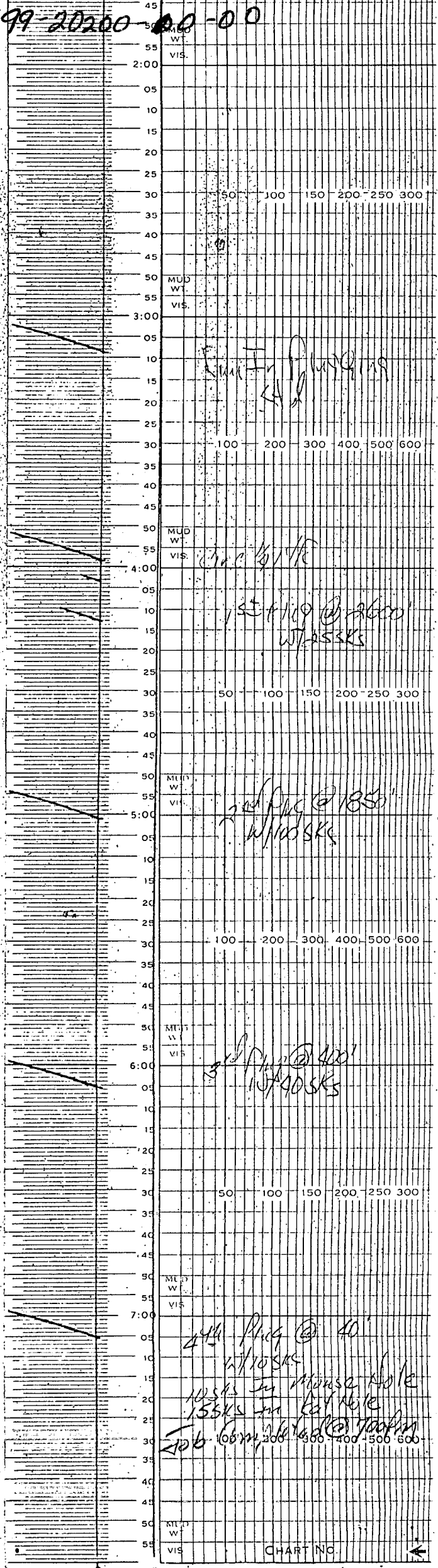
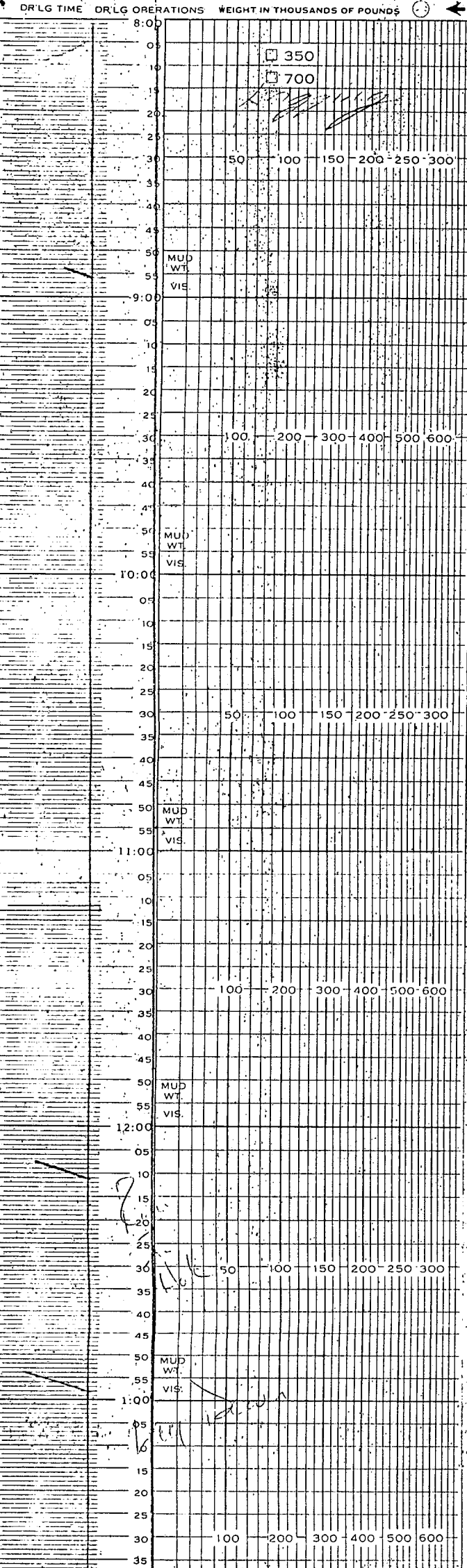
ORIGINAL

(12 HOUR) Recorder Chart

CHANGE CHARTS AT 8:00 A.M. AND 8:00 P.M.

16-199-20200-00-00

OPERATOR Halden Energy Corp  
 NO. 275151 LEASE Kirkham  
 LOC. SE 1/4 SE SEC. 23 T. 12S R. 40W  
 COUNTY Wallace STATE Kansas  
 DATE ON 1-18/94 T.D. OFF. 5080  
 TIME ON 12:00 A.M. T.D. ON 11:30





**HALLIBURTON SERVICES**

Duncan, Oklahoma 73538

A Division of Halliburton Company

15-199-20200-00-00

TICKET

NO. 051626-3

FORM 1906 R-1

WELL NO. - FAIRM OR LEASE NAME <b>23-1 KIRKHAM</b>		COUNTY <b>WALLACE</b>	STATE <b>Ks.</b>	CITY / OFFSHORE LOCATION	DATE <b>5-31-91</b>
CHARGE TO <b>HOLDEN ENERGY CORP.</b>		OWNER <b>HOLDEN ENERGY CORP.</b>	TICKET TYPE (CHECK ONE) SERVICE <input checked="" type="checkbox"/> SALES <input type="checkbox"/>		NITROGEN JOB YES <input type="checkbox"/> NO <input checked="" type="checkbox"/>
ADDRESS <b>SUITE 600 - LINCOLN CENTER</b>		CONTRACTOR <b>EMPHASIS BLS #10</b>	LOCATION <b>1 OBERLIN, KS.</b>		CODE <b>2552?</b>
CITY, STATE, ZIP <b>ARDMORE, OK. 73401</b>		SHIPPED VIA <b>2591 50181</b>	FREIGHT CHARGES <input type="checkbox"/> PPD <input type="checkbox"/> COLLECT		LOCATION <b>2</b>
WELL TYPE <b>01</b>	WELL CATEGORY <b>03</b>	WELL PERMIT NO. <b>B-945653</b>	DELIVERED TO <b>N/SHARON SPRINGS, KS.</b>	LOCATION <b>3</b>	CODE
TYPE AND PURPOSE OF JOB <b>010</b>		ORDER NO.	REFERRAL LOCATION		

As consideration, the above-named Customer agrees to pay Halliburton in accord with the rates and terms stated in Halliburton's current price lists. Invoices payable NET by the 20th of the following month after date of invoice. Upon Customer's default in payment of Customer's account by the last day of the month following the month in which the invoice is dated, Customer agrees to pay interest thereon at the highest lawful contract rate applicable, but never to exceed 18% per annum. In the event it becomes necessary to employ an attorney to enforce collection of said account, Customer agrees to pay all collection costs and attorney fees in the amount of 20% of the amount of the unpaid account. These terms and conditions shall be governed by the law of the state where services are performed or equipment or materials are furnished.

Halliburton warrants only title to the products, supplies and materials and that the same are free from defects in workmanship and materials. THERE ARE NO WARRANTIES, EXPRESS OR IMPLIED, OF MERCHANTABILITY, FITNESS FOR A PARTICULAR PURPOSE OR OTHERWISE WHICH EXTEND BEYOND THOSE STATED IN THE IMMEDIATELY PRECEDING SENTENCE. Halliburton's liability and customer's exclusive remedy in any cause of action (whether in contract, tort, product liability, breach of warranty or otherwise) arising out of the sale or use of any products, supplies or materials is expressly limited to the replacement of such products, supplies or materials on their return to Halliburton or, at Halliburton's option, to the allowance to the customer of credit for the cost of such items. In no event shall Halliburton be liable for special, incidental, indirect, punitive or consequential damages.

PRICE REFERENCE	SECONDARY REF OR PART NO.	L O C.	ACCOUNT	DESCRIPTION	UNITS 1		UNITS 2		UNIT PRICE	AMOUNT
					QTY	MEAS	QTY	MEAS		
000-117		1		MILEAGE #2591	110	mi.			2.60	286.00
001-016		1		pump CHRG.	364	FT.				515.00
16 A	830.2171	1		TEXAS PATTERN GUIDES 516E	1	EA.	8 5/8	in.		161.00
24 A	815.19502	1		INSERT FLOAT VALVE	1	EA.	8 5/8	in.		171.00
40	807.93059	1		S-4 CENTRALIZERS	2	EA.	8 5/8	in.	62.00	124.00
27	815.19415			FILL UP ASSEMBLY	1	EA.	1 1/2	in.		30.00
350	890.10802	1		HALLIBURTON WELD-A	1	LB.				11.50
D30-503		1		Top Plug	1	EA	8 5/8			90.00

RECEIVED  
STATE COMMISSION

JUN 27 1991

COMMISSION  
Wichita, Kansas

AS PER ATTACHED BULK MATERIAL DELIVERY TICKET NO.

**B- 945653**

**2578.47**

WAS JOB SATISFACTORILY COMPLETED? \_\_\_\_\_

WAS OPERATION OF EQUIPMENT SATISFACTORY? \_\_\_\_\_

WAS PERFORMANCE OF PERSONNEL SATISFACTORY? \_\_\_\_\_

X Tom Alton  
CUSTOMER OR HIS AGENT (PLEASE PRINT)

X [Signature]  
CUSTOMER OR HIS AGENT (SIGNATURE)

WE CERTIFY THAT THE FAIR LABOR STANDARDS ACT OF 1938, AS AMENDED HAS BEEN COMPLIED WITH IN THE PRODUCTION OF GOODS AND OR WITH RESPECT TO SERVICES FURNISHED UNDER THIS CONTRACT.

**G.L. BRYANT**  
HALLIBURTON OPERATOR

HALLIBURTON APPROVAL

SUB TOTAL **3966.99**  
APPLICABLE TAXES WILL BE ADDED ON INVOICE



ORIGINAL

**AND  
TICKET CONTINUATION**

FOR INVOICE AND  
TICKET NO. **0516**

**13-199-20200-00-00**

A Division of Halliburton Company

DATE 5/30/91	CUSTOMER ORDER NO.	WELL NO. AND FARM 23-1 Kirkham	COUNTY Wallace	STATE KS
CHARGE TO Holden Energy Corp.		OWNER Holden Energy Corp.	CONTRACTOR Emphasis #7	No. <b>B 945653</b>
MAILING ADDRESS Suite 600 - Lincoln Center		DELIVERED FROM Oberlin, KS	LOCATION CODE 25529	PREPARED BY Lyle/
CITY & STATE Ardmore, OK 73401		DELIVERED TO S/Goodland, KS	TRUCK NO. 50181 75821	RECEIVED BY <b>BRYANT</b>

PRICE REFERENCE	SECONDARY REF. OR PART NO.	CODE		DESCRIPTION	UNITS 1		UNITS 2		UNIT PRICE	AMOUNT	
		L	D		QTY.	MEAS.	QTY.	MEAS.			
504-308	516.00261	1	B	Standard Cement	135	sk			6.75	911.25	
506-105	516.00286	1	B	Pozmix 'A'	90	sk			3.50	315.00	
506-121	516.00259	1	B	(4) Halliburton Gel Allowed 2%						N/C	
509-406	890.50812	1	B	Calicum Chloride 3%	7	sk			26.25	183.75	
<p><b>RECEIVED</b> STATE CORPORATION COMMISSION   <b>JUN 27 1991</b>                  COUNTY OF WALLACE                  WALLACE, OKLAHOMA</p>											
		Returned Mileage Charge	TOTAL WEIGHT		LOADED MILES		TON MILES				
		SERVICE CHARGE ON MATERIALS RETURNED							CU. FEET		
500-207		1	B	SERVICE CHARGE			239		1.15	274.85	
500-306		1	B	Mileage Charge	20,310	110	1,117.05		.80	893.64	
				TOTAL WEIGHT	LOADED MILES		TON MILES				
No. <b>B 945653</b>		CARRY FORWARD TO INVOICE							SUB-TOTAL		2,578.49

**ORIGINAL**

DISTRICT OBERLIN, KS.

DATE 5-31-91  
15-199-20200-0000

TO: HALLIBURTON SERVICES

YOU ARE HEREBY REQUESTED TO FURNISH EQUIPMENT AND SERVICEMEN TO DELIVER AND OPERATE

THE SAME AS AN INDEPENDENT CONTRACTOR TO: HOLDEN ENERGY CORP. (CUSTOMER)  
AND DELIVER AND SELL PRODUCTS, SUPPLIES, AND MATERIALS FOR THE PURPOSE OF SERVICING

WELL NO. 23-1 LEASE KIRKHAM SEC. 23 TWP. 12<sup>s</sup> RANGE 40<sup>W</sup>  
FIELD N. SHARON SPRINGS, KS. COUNTY WALLACE STATE KS. OWNED BY HOLDEN ENERGY CORP.

THE FOLLOWING INFORMATION WAS FURNISHED BY THE CUSTOMER OR HIS AGENT

FORMATION NAME \_\_\_\_\_ TYPE \_\_\_\_\_  
FORMATION THICKNESS \_\_\_\_\_ FROM \_\_\_\_\_ TO \_\_\_\_\_  
PACKER: TYPE \_\_\_\_\_ SET AT \_\_\_\_\_  
TOTAL DEPTH 365' MUD WEIGHT \_\_\_\_\_  
BORE HOLE 12 7/8"  
INITIAL PROD: OIL \_\_\_\_\_ BPD, H<sub>2</sub>O \_\_\_\_\_ BPD, GAS \_\_\_\_\_ MCF  
PRESENT PROD: OIL \_\_\_\_\_ BPD, H<sub>2</sub>O \_\_\_\_\_ BPD, GAS \_\_\_\_\_ MCF

	NEW USED	WEIGHT	SIZE	FROM	TO	MAX. ALLOW. P.S.I.
CASING	N	24.0"	8 5/8"	KB.	364'	
LINER						
TUBING						
OPEN HOLE			12 7/8"	364'	365'	SHOTS/FT.
PERFORATIONS						
PERFORATIONS						
PERFORATIONS						

PREVIOUS TREATMENT: DATE \_\_\_\_\_ TYPE \_\_\_\_\_ MATERIALS \_\_\_\_\_  
TREATMENT INSTRUCTIONS: TREAT THRU TUBING  ANNULUS  CASING  TUBING/ANNULUS  HYDRAULIC HORSEPOWER ORDERED \_\_\_\_\_  
CMT. SURF. CSNG. w/ 225 SKS. OF 60/40 POC. w/ 270 GEL, 370 C.C.

CUSTOMER OR HIS AGENT WARRANTS THE WELL IS IN PROPER CONDITION TO RECEIVE THE PRODUCTS, SUPPLIES, MATERIALS, AND SERVICES

- As consideration, the above-named Customer agrees: THIS CONTRACT MUST BE SIGNED BEFORE WORK IS COMMENCED
- To pay Halliburton in accord with the rates and terms stated in Halliburton's current price list. Invoices are payable NET by the 20th of the following month after date of invoice. Upon Customer's default in payment of Customer's account by the last day of the month following the month in which the invoice is dated, Customer agrees to pay interest thereon after default at the highest lawful contract rate applicable but never to exceed 18% per annum. In the event it becomes necessary to employ attorneys to enforce collection of said account, Customer agrees to pay all collection costs and attorney fees in the amount of 20% of the amount of the unpaid account.
  - To defend, indemnify, release and hold harmless Halliburton, its divisions, subsidiaries, parent and affiliated companies and the officers, directors, employees, agents and servants of all of them from and against any claims, liability, expenses, attorneys fees, and costs of defense to the extent permitted by law for:
    - Damage to property owned by, in the possession of, or leased by Customer, and/or the well owner (if different from Customer), including, but not limited to, surface and subsurface damage. The term "well owner" shall include working and royalty interest owners.
    - Reservoir, formation, or well loss or damage, subsurface trespass or any action in the nature thereof.
    - Personal injury or death or property damage (including, but not limited to, damage to the reservoir, formation or well), or any damages whatsoever, growing out of or in any way connected with or resulting from pollution, subsurface pressure, losing control of the well and/or a well blowout or the use of radioactive material.

The defense, indemnity, release and hold harmless obligations of Customer provided for in this Section b) and Section c) below shall apply to claims or liability even if caused or contributed to by Halliburton's negligence, strict liability, or the unseaworthiness of any vessel owned, operated, or furnished by Halliburton or any defect in the data, products, supplies, materials, or equipment of Halliburton whether in the preparation, design, manufacture, distribution, or marketing thereof, or from a failure to warn any person of such defect. Such defense, indemnity, release and hold harmless obligations of Customer shall not apply where the claims or liability are caused by the gross negligence or willful misconduct of Halliburton. The term "Halliburton" as used in said Sections b) and c) shall mean Halliburton, its divisions, subsidiaries, parent and affiliated companies, and the officers, directors, employees, agents and servants of all of them.
  - That because of the uncertainty of variable well conditions and the necessity of relying on facts and supporting services furnished by others, Halliburton is unable to guarantee the effectiveness of the products, supplies or materials, nor the results of any treatment or service, nor the accuracy of any chart interpretation, research analysis, job recommendation or other data furnished by Halliburton. Halliburton personnel will use their best efforts in gathering such information and their best judgment in interpreting it, but Customer agrees that Halliburton shall not be liable for and Customer shall indemnify Halliburton against any damages arising from the use of such information.
  - That Halliburton warrants only title to the products, supplies and materials and that the same are free from defects in workmanship and materials. THERE ARE NO WARRANTIES, EXPRESS OR IMPLIED, OF MERCHANTABILITY, FITNESS OR OTHERWISE WHICH EXTEND BEYOND THOSE STATED IN THE IMMEDIATELY PRECEDING SENTENCE. Halliburton's liability and Customer's exclusive remedy in the event of a claim of cause of action (whether in contract, tort, breach of warranty or otherwise) arising out of the sale or use of any products, supplies or materials is expressly limited to the replacement of such products, supplies or materials on their return to Halliburton or, at Halliburton's option, to the allowance to the Customer of credit for the cost of such items. In no event shall Halliburton be liable for special, incidental, indirect, punitive or consequential damages.
  - That Customer shall, at its risk and expense, attempt to recover any Halliburton equipment, tools or instruments which are lost in the well and if such equipment, tools or instruments are not recovered, Customer shall pay Halliburton its replacement cost unless such loss is due to the sole negligence of Halliburton. If Halliburton equipment, tools or instruments are damaged in the well, Customer shall pay Halliburton the lesser of its replacement cost or the cost of repairs unless such damage is caused by the sole negligence of Halliburton. In the case of equipment, tools or instruments for marine operations, Customer shall, in addition to the foregoing, be fully responsible for loss of or damage to any of Halliburton's equipment, tools or instruments which occurs at any time after delivery to Customer at the landing or returned to the landing, unless such loss or damage is caused by the sole negligence of Halliburton.
  - To waive the provisions of the Deceptive Trade Practices - Consumer Protection Act, to the extent permitted by law.
  - That this contract shall be governed by the law of the state where services are performed or materials are furnished.
  - That Halliburton shall not be bound by any changes or modifications in this contract, except where such change or modification is made in writing by a duly authorized executive officer of Halliburton.

RECEIVED  
STATE COMMISSION

I HAVE READ AND UNDERSTAND THIS CONTRACT AND REPRESENT THAT I AM AUTHORIZED TO SIGN THE SAME AS CUSTOMER'S AGENT.  
SIGNED [Signature] CUSTOMER  
DATE 5-31-91

JUN 27 1991

WELL DATA  
FIELD N./SHARON SPRINGS, KS. SEC. 23 TWP. 12<sup>S</sup> RNG. 40<sup>W</sup> COUNTY WALLACE STATE KS.

FORMATION NAME \_\_\_\_\_ TYPE \_\_\_\_\_  
FORMATION THICKNESS \_\_\_\_\_ FROM \_\_\_\_\_ TO \_\_\_\_\_  
INITIAL PROD. OIL \_\_\_\_\_ BPD. WATER \_\_\_\_\_ BPD. GAS \_\_\_\_\_ MCFD  
PRESENT PROD. OIL \_\_\_\_\_ BPD. WATER \_\_\_\_\_ BPD. GAS \_\_\_\_\_ MCFD  
COMPLETION DATE \_\_\_\_\_ MUD TYPE \_\_\_\_\_ MUD WT. \_\_\_\_\_  
PACKER TYPE \_\_\_\_\_ SET AT \_\_\_\_\_  
BOTTOM HOLE TEMP. \_\_\_\_\_ PRESSURE \_\_\_\_\_  
MISC. DATA \_\_\_\_\_ TOTAL DEPTH 365'

	NEW USED	WEIGHT	SIZE	FROM	TO	MAXIMUM PSI ALLOWABLE
CASING	N	24.0"	8 5/8"	KB.	364'	
LINER						
TUBING						
OPEN HOLE			12 1/4"	364'	365'	SHOTS/FT.
PERFORATIONS						
PERFORATIONS						
PERFORATIONS						

JOB DATA

CALLED OUT	ON LOCATION	JOB STARTED	JOB COMPLETED
DATE 5-30-91 TIME 2200	DATE 5-31-91 TIME 0030	DATE 5-31-91 TIME 0315	DATE 5-31-91 TIME 0615

TOOLS AND ACCESSORIES

TYPE AND SIZE	QTY.	MAKE
FLOAT-BALLS AUTO FILL 1 1/2"	1	Howco
FLOAT-VALVE INSERT		
GUIDE SHOE TEXAS PATENT 8 5/8"	1	Howco
CENTRALIZERS S-4 8 5/8"		
BOTTOM PLUG		
TOP PLUG LA-11 8 5/8"	1	Howco
HEAD		
PACKER		
OTHER		

PERSONNEL AND SERVICE UNITS

NAME	UNIT NO. & TYPE	LOCATION
G.L. BRYANT	2591	
J. ALSTROM	RCM	OBERLIN, KS.
E. GAMEZ	50181	
	BULKTRK.	OBERLIN, KS.

MATERIALS

TREAT. FLUID \_\_\_\_\_ DENSITY \_\_\_\_\_ LB/GAL. API  
 DISPL. FLUID \_\_\_\_\_ DENSITY \_\_\_\_\_ LB/GAL. API  
 PROP. TYPE \_\_\_\_\_ SIZE \_\_\_\_\_ LB.  
 PROP. TYPE \_\_\_\_\_ SIZE \_\_\_\_\_ LB.  
 ACID TYPE \_\_\_\_\_ GAL. %  
 ACID TYPE \_\_\_\_\_ GAL. %  
 ACID TYPE \_\_\_\_\_ GAL. %  
 SURFACTANT TYPE \_\_\_\_\_ GAL. IN.  
 NE AGENT TYPE \_\_\_\_\_ GAL. IN.  
 FLUID LOSS ADD. TYPE \_\_\_\_\_ GAL.-LB. IN.  
 GELLING AGENT TYPE \_\_\_\_\_ GAL.-LB. IN.  
 FRIC. RED. AGENT TYPE \_\_\_\_\_ GAL.-LB. IN.  
 BREAKER TYPE \_\_\_\_\_ GAL.-LB. IN.  
 BLOCKING AGENT TYPE \_\_\_\_\_ GAL.-LB.  
 PERFPAC BALLS TYPE \_\_\_\_\_ QTY.  
 OTHER \_\_\_\_\_  
 OTHER \_\_\_\_\_

DEPARTMENT CMT.  
 DESCRIPTION OF JOB CMT. SURF CSNG. W/ 225 SKS.  
 OF 69/40 102. 270 GEL, 370 C.C.

SHOE JT. 44.31'  
 JOB DONE THRU: TUBING  CASING  ANNULUS  TBG/ANN.   
 CUSTOMER REPRESENTATIVE X 102M Alin

HALLIBURTON OPERATOR G.L. BRYANT COPIES REQUESTED \_\_\_\_\_

CEMENT DATA

STAGE	NUMBER OF SACKS	CEMENT	BRAND	BULK SACKED	ADDITIVES	YIELD CU.FT./SK.	MIXED LBS./GAL.
	225	60/40	POZ	B	270 GEL, 370 C.C.	1.28	14.36

PRESSURES IN PSI  
 CIRCULATING \_\_\_\_\_ DISPLACEMENT \_\_\_\_\_  
 BREAKDOWN \_\_\_\_\_ MAXIMUM \_\_\_\_\_  
 AVERAGE \_\_\_\_\_ FRACTURE GRADIENT \_\_\_\_\_  
 SHUT-IN: INSTANT \_\_\_\_\_ 5-MIN. \_\_\_\_\_ 15-MIN. \_\_\_\_\_  
 HYDRAULIC HORSEPOWER \_\_\_\_\_  
 ORDERED \_\_\_\_\_ AVAILABLE \_\_\_\_\_ USED \_\_\_\_\_  
 AVERAGE RATES IN BPM \_\_\_\_\_  
 TREATING \_\_\_\_\_ DISPL. \_\_\_\_\_ OVERALL \_\_\_\_\_  
 CEMENT LEFT IN PIPE \_\_\_\_\_  
 FEET \_\_\_\_\_ REASON \_\_\_\_\_

SUMMARY

VOLUMES

PRESLUSH: BBL-GAL \_\_\_\_\_ TYPE \_\_\_\_\_  
 LOAD & BKDN: BBL-GAL \_\_\_\_\_ PAD: BBL-GAL \_\_\_\_\_  
 TREATMENT: BBL-GAL \_\_\_\_\_ DISP. BBL-GAL 20 1/4  
 CEMENT SLURRY BBL-GAL 5 1/2  
 TOTAL VOLUME: BBL-GAL \_\_\_\_\_

REMARKS

RECEIVED  
 STATE COMMISSION

JUN 27 1991

HOLDEN ENERGY CORP. LEASE KICKPAYM  
 WELL NO. 23-1  
 JOB TYPE CMT SURF CSNG.  
 DATE 5-31-91

**JOB LOG**

WELL NO. 1 LEASE 11111111 TICKET NO. 031  
 CUSTOMER HOLDEN ENERGY CORP. 15-199720200 00-00 PAGE NO. 1  
 JOB TYPE CMT. SURF. CSNG. DATE 5-30-91

FORM 2013 R-2

CHART NO.	TIME	RATE (BPM)	VOLUME (BBL) (GAL)	PUMPS		PRESSURE (PSI)		DESCRIPTION OF OPERATION AND MATERIALS
				T	C	TUBING	CASING	
	2200							CALLED OUT
5-31-91	0030							ON LOC. - Rig JUST T.O. - CIRCULATING
	0130							REQUESTED
	0110							Rig TRIPPING OUT
	0230							Rig BACK ON BOTTOM - CIRCULATING
	0255							Rig STARTING OUT OF HOLE W/D.C.
	0315							Rig OUT OF HOLE.
								START CSNG. - SHOE JT. 44.31' - TEXAS
								PATTERN GUIDE SHOE. - INSERT W/AUTO FILL
								CENTRALIZERS ON 1 <sup>ST</sup> + 3 <sup>RD</sup> COLLARS
	0500				1		450	HOOK UP - pump BALL THRU - 4.50"
								Rig CIRCULATING
								HOOK UP TO TRK
	0515	5	5		1		175	ST. H2O - 5 BBL
		5						START 225 SKS. OF 60/40 PORE W/270 GEL
								370 c.c.
		5	5 1/2		1		200	FINISH CMT. - TURN PLUG LOOSE.
		5						ST. Displ
		1 1/2	20 1/4		1		200	FINISH Displ - CIRCULATED 15 BBL OF CMT.
0530					1		400	PLUG DOWN - BUMPED INSERT
								INSERT HELD
								WASH UP + RACK UP.
	0615							JOB COMPLETE

RECEIVED  
 STATE OIL AND GAS COMMISSION  
 JUN 27 1991  
 COMMISSION DIVISION  
 VICTORIA, TEXAS