

STATE OF KANSAS  
STATE CORPORATION COMMISSION

WELL PLUGGING RECORD

Give All Information Completely  
Make Required Affidavit  
Mail or Deliver Report to  
Conservation Division  
State Corporation Comm.  
245 North Water  
Wichita, KS 67202

Russell County, Sec. 30 Twp. 11 Rge. 12W E/W  
Location as "NE/CNW $\frac{1}{4}$ SW $\frac{1}{4}$ " or footage from lines  
NW SW SE

Lease Owner Shields Oil Producers, Inc.  
Lease Name Homewood "A" Well No. 1  
Office Address Shields Bldg., Russell, Kansas 67665  
Character of Well (Completed as Oil, Gas or Dry Hole)  
Dry hole

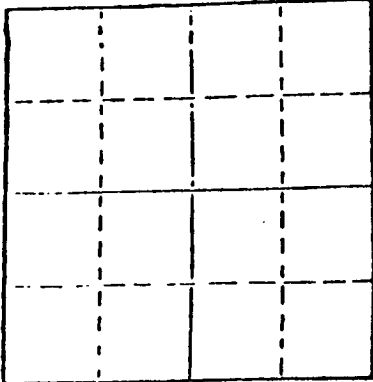
Date Well completed 10-10 1983  
Application for plugging filed 10-10 1983  
Application for plugging approved 10-10 1983  
Plugging commenced 10-10 1983  
Plugging completed 10-10 1983

Reason for abandonment of well or producing formation  
Dry hole

If a producing well is abandoned, date of last production  
19

Was permission obtained from the Conservation Division or  
its agents before plugging was commenced? Yes

Name of Conservation Agent who supervised plugging of this well Gilbert Scheck  
Producing formation \_\_\_\_\_ Depth to top \_\_\_\_\_ Bottom \_\_\_\_\_ Total Depth of Well 3,075'  
Show depth and thickness of all water, oil and gas formations.



Locate well correctly on above  
Section Plot

OIL, GAS OR WATER RECORDS

CASING RECORD

FORMATION	CONTENT	FROM	TO	SIZE	PUT IN	PULLED OUT
				8 5/8"	441'	Cmtd. w/250 sax

Describe in detail the manner in which the well was plugged, indicating where the mud fluid  
was placed and the method or methods used in introducing it into the hold. If cement or other  
plugs were used, state the character of same and depth placed, from \_\_\_\_\_ feet to  
\_\_\_\_\_ feet for each plug set.

- Fill hole w/heavy mud
- Push bridge plug to 720'
- Spot 25 sax cement on plug thru 4 $\frac{1}{2}$ " drill pipe
- Fill hole w/heavy mud
- Push bridge plug to 500'
- Spot 100 sax cement on plug thru 4 $\frac{1}{2}$ " drill pipe
- Push bridge plug to 40' w/ $\frac{1}{2}$  sax hulls on plug
- Dump 10 sax cement on plug to cellar
- Dump 10 sax cement in rat hole and 10 sax cement in mouse hole

(If additional description is necessary, use BACK of this sheet)

Name of Plugging Contractor Shields Drilling Co., Inc.

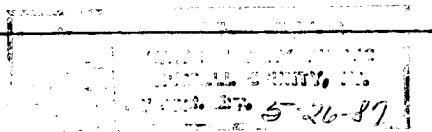
STATE OF KANSAS COUNTY OF RUSSELL, ss.  
R.L. SHIELDS (Employer or owner or operator)  
of the above-described well, being first duly sworn on oath, says: That I have knowledge of  
the facts, statements, and matters herein contained and the log of the above-described well  
as filed and that the same are true and correct. So help me God.

(Signature) R.L. Shields  
Shields Bldg., Russell, Kansas  
(Address)

SUBSCRIBED AND SWORN TO before me this 26th day of October, 1983

Russell Phillips Notary Public.

My commission expires



RECEIVED  
STATE CORPORATION COMMISSION  
OCT 27 1983  
CONSERVATION DIVISION  
Wichita, Kansas