

CONFIDENTIAL

KANSAS CORPORATION COMMISSION
OIL & GAS CONSERVATION DIVISION

ORIGINAL

Form ACO-1
September 1999
Form Must Be Typed

Handwritten: KCC
7/22/08

WELL COMPLETION FORM
WELL HISTORY - DESCRIPTION OF WELL & LEASE

7/22/08

Operator: License # 33699
Name: T-N-T Engineering, Inc.
Address: 3711 Maplewood Ave, Suite 201
City/State/Zip: Wichita Falls, TX 76308
Purchaser: Coffeyville
Operator Contact Person: Hal Gill
Phone: (940) 691-9157
Contractor: Name: Discovery Drilling Co., Inc.
License: 31548
Wellsite Geologist: Jim Musgrove

API No. 15 - 009-25164-0000
County: Trapp BARTON
E/2 SW SW NW Sec. 21 Twp. 17 S. R. 13 East West
2,310 feet from S / (circle one) Line of Section
340 feet from E / (circle one) Line of Section

Footages Calculated from Nearest Outside Section Corner:
(circle one) NE SE NW SW
Lease Name: Soderstrom Well #: 13
Field Name: Trapp (Multipay)

Producing Formation: Arbuckle
Elevation: Ground: 1,955 Kelly Bushing: 1,963
Total Depth: 3550' Plug Back Total Depth: 3497'
Amount of Surface Pipe Set and Cemented at 914' Feet
Multiple Stage Cementing Collar Used? Yes No
If yes, show depth set _____ Feet
If Alternate II completion, cement circulated from _____
feet depth to _____ w/ _____ sx cmt.

Designate Type of Completion:
 New Well Re-Entry Workover
 Oil SWD SLOW Temp. Abd.
 Gas ENHR SIGW
 Dry Other (Core, WSW, Expl., Cathodic, etc.)
If Workover/Re-entry: Old Well Info as follows:
Operator: _____
Well Name: _____

CONFIDENTIAL
JUL 22 2008

Original Comp. Date: _____ Original Total Depth: _____
 Deepening Re-perf. Conv. to Enhr./SWD
 Plug Back Plug Back Total Depth
 Commingled Docket No. _____
 Dual Completion Docket No. _____
 Other (SWD or Enhr.?) Docket No. _____
4/4/08 4/9/08 6/1/08
Spud Date or Date Reached TD Completion Date or
Recompletion Date Recompletion Date

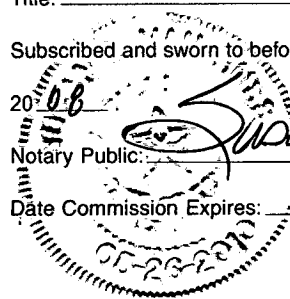
Drilling Fluid Management Plan *AF 1162870*
(Data must be collected from the Reserve Pit)
Chloride content 16,000 ppm Fluid volume 240 bbls
Dewatering method used Evaporation
Location of fluid disposal if hauled offsite: _____
Operator Name: _____
Lease Name: _____ License No.: _____
Quarter _____ Sec. _____ Twp. _____ S. R. _____ East West
County: _____ Docket No.: _____

INSTRUCTIONS: An original and two copies of this form shall be filed with the Kansas Corporation Commission, 130 S. Market - Room 2078, Wichita, Kansas 67202, within 120 days of the spud date, recompletion, workover or conversion of a well. Rule 82-3-130, 82-3-106 and 82-3-107 apply. Information of side two of this form will be held confidential for a period of 12 months if requested in writing and submitted with the form (see rule 82-3-107 for confidentiality in excess of 12 months). One copy of all wireline logs and geologist well report shall be attached with this form. ALL CEMENTING TICKETS MUST BE ATTACHED. Submit CP-4 form with all plugged wells. Submit CP-111 form with all temporarily abandoned wells.

All requirements of the statutes, rules and regulations promulgated to regulate the oil and gas industry have been fully complied with and the statements herein are complete and correct to the best of my knowledge.

Signature: Hal Gill
Title: Kansas Area Engineer Date: 7-23-08
Subscribed and sworn to before me this 23rd day of July
Notary Public: Suzanne Van Lues
Date Commission Expires: May 26 2010

KCC Office Use ONLY
 Letter of Confidentiality Received
 Wireline Log Received
 Geologist Report Received
 UIC Distribution
RECEIVED
KANSAS CORPORATION COMMISSION
JUL 28 2008



ORIGINAL

Side Two

CONFIDENTIAL

Operator Name: T-N-T Engineering, Inc. Lease Name: Soderstrom Well #: 13
Sec. 21 Twp. 17 S. R. 13 [] East [x] West County: Trapp

INSTRUCTIONS: Show important tops and base of formations penetrated. Detail all cores. Report all final copies of drill stems tests giving interval tested, time tool open and closed, flowing and shut-in pressures, whether shut-in pressure reached static level, hydrostatic pressures, bottom hole temperature, fluid recovery, and flow rates if gas to surface test, along with final chart(s). Attach extra sheet if more space is needed. Attach copy of all Electric Wireline Logs surveyed. Attach final geological well site report.

Drill Stem Tests Taken [] Yes [x] No
Samples Sent to Geological Survey [] Yes [x] No
Cores Taken [] Yes [x] No
Electric Log Run [x] Yes [] No

List All E. Logs Run:

CD/N, DI, ML, Sonic

Table with 3 columns: Name, Top, Datum. Rows include Anhydrite, Topeka, Heebner, Toronto, Douglas, Lansing, Base Kansas City, Arbuckle.

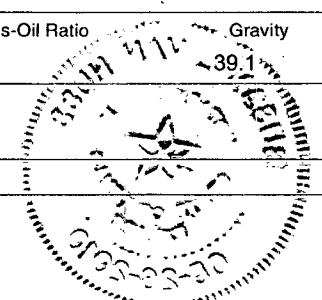
CASING RECORD table with columns: Purpose of String, Size Hole Drilled, Size Casing Set, Weight Lbs./Ft., Setting Depth, Type of Cement, # Sacks Used, Type and Percent Additives.

ADDITIONAL CEMENTING / SQUEEZE RECORD table with columns: Purpose, Depth Top Bottom, Type of Cement, #Sacks Used, Type and Percent Additives.

PERFORATION RECORD table with columns: Shots Per Foot, PERFORATION RECORD - Bridge Plugs Set/Type, Acid, Fracture, Shot, Cement Squeeze Record, Depth.

TUBING RECORD table with columns: Size, Set At, Packer At, Liner Run, Date of First, Resumerd Production, SWD or Enhr., Producing Method, Estimated Production Per 24 Hours, Oil Bbbs., Gas Mcf, Water Bbbs., Gas-Oil Ratio, Gravity.

Disposition of Gas METHOD OF COMPLETION Production Interval
[] Vented [] Sold [x] Used on Lease [] Open Hole [x] Perf. [] Dually Comp. [] Commingled
[] Other (Specify)





Pratt

B I L L T O
 T-N-T ENGINEERING
 3711 MAPLEWOOD
 SUITE 201
 WICHITA FALLS TX 76308
 ATTN: LEE BATES

J O B S I T E
 LEASE NAME Soderstrom
 WELL NO. 13
 COUNTY Barton
 STATE KS
 JOB DESCRIPTION Cement-New Well Casing/Pipe
 JOB CONTACT LEE BATES

PAGE 1 of 2	CUST NO 1970-TNT002	INVOICE DATE 04/14/2008
INVOICE NUMBER 1970001752		

JOB #	EQUIPMENT #	PURCHASE ORDER NO.	TERMS	DUE DATE
1970-01758	301		Net 30 DAYS	05/14/2008
For Service Dates: 04/10/2008 to 04/10/2008				
1970-01758				
1970-18516	Cement-New Well Casing	4/10/08		
	Pump Charge-Hourly		1.00 Hour	2,160.00
	Depth Charge; 3001'-4000'		1.00 EA	250.00
	Cementing Head w/Manifold		1.00 EA	360.00
	Plug Container Utilization		1.00 EA	400.00
	Charge		10.00 EA	1,100.00
	Cement Float Equipment		1.00 EA	200.00
	Auto Fill Float Shoe		200.00 DH	280.00
	Cement Float Equipment		1.00 EA	200.00
	Latch Down Plug and Baffle		130.00 DH	910.00
	Cement Float Equipment		608.00 DH	972.80
	Turbolizer			
	Extra Equipment		65.00 Hour	276.25
	Casing Swivel Rental		10.00 EA	440.00 T
	Mileage		50.00 EA	300.00 T
	Blending and Mixing Service		42.00 EA	168.00 T
	Charge		132.00 EA	990.00 T
	Mileage		875.00 EA	586.25 T
	Heavy Equipment Mileage		500.00 EA	430.00 T
	Mileage			
	Proppant and Bulk Delivery			
	Charges			
	Pickup			
	Unit Mileage Charge(Pickups,			
	Vans, or Cars)			
	Additives			
	CC-1, KCI Substitute			
	Additives			
	Cement Friction Reducer			
	Additives			
	De-foamer			
	Additives			
	FLA-322			
	Additives			
	Gilsonite			
	Additives			
	Mud Flush			

CONFIDENTIAL
 JUL 22 2008
 KCC

RECEIVED
 KANSAS CORPORATION COMMISSION
 JUL 28 2008
 CONSERVATION DIVISION
 WICHITA, KS



Pratt

PAGE 2 of 2	CUST NO 1970-TNT002	INVOICE DATE 04/14/2008
INVOICE NUMBER 1970001752		

B T-N-T ENGINEERING
I 3711 MAPLEWOOD
L SUITE 201
T WICHITA FALLS TX 76308
O ATTN: LEE BATES

J LEASE NAME Soderstrom
O WELL NO. 13
B COUNTY Barton
S STATE KS
I JOB DESCRIPTION Cement-New Well Casing/Pipe
T JOB CONTACT LEE BATES
E

JOB #	EQUIPMENT #	PURCHASE ORDER NO.	TERMS	DUE DATE
1970-01758	301		Net 30 DAYS	05/14/2008

	QTY	U of M	UNIT PRICE	INVOICE AMOUNT
Additives	824.00	EA	0.500	412.00 T
Salt				
Cement	25.00	EA	11.000	275.00 T
60/40 POZ				
Cement	175.00	EA	16.600	2,905.00 T
AA2 Cement				
Supervisor	1.00	Hour	175.000	175.00
Service Supervisor Charge				

CONFIDENTIAL
JUL 22 2008
KCC

Vendor 17515 Inv 1970001752
 Account 1040 Date 4/14
 Amt 11073.01 Disc _____
 # 4130 Month _____
5011 Sub 1 Lcs 105253

[Handwritten Signature]

(B)

RECEIVED
 KANSAS CORPORATION COMMISSION
JUL 28 2008
 CONSERVATION DIVISION
 WICHITA, KS

PLEASE REMIT TO:
BASIC ENERGY SERVICES, LP
 PO BOX 841903
 DALLAS, TX 75284-1903

SEND OTHER CORRESPONDENCE TO:
 BASIC ENERGY SERVICES, LP
 PO BOX 10460
 MIDLAND, TX 79702

BID DISCOUNT	-2,853.96
SUBTOTAL	10,736.34
TAX	336.67
INVOICE TOTAL	11,073.01

Customer <i>J.N.T. Engineering</i>	Lease No.	Date <i>4-10-08</i>
Lease <i>Soderstrom</i>	Well # <i>13</i>	
Field Order # <i>18516</i>	Station <i>Pic H</i>	Casing <i>5 1/2</i>
		Depth <i>3547</i>
Type Job <i>CNW-L.S.</i>	Formation	County <i>Barton</i>
		State <i>Ks.</i>
		Legal Description <i>21-175-13w</i>

PIPE DATA		PERFORATING DATA		FLUID USED		TREATMENT RESUME		
Casing Size	Tubing Size	Shots/Ft		Acid	RATE	PRESS	ISIP	
<i>5 1/2</i>			<i>Cont.</i>	<i>775 gal. H₂O₂</i>				
Depth <i>3547</i>	Depth	From	To	Pre Pad <i>1.36 M³</i>	Max		5 Min.	
Volume <i>56.5</i>	Volume	From	To	Pad	Min		10 Min.	
Max Press <i>1500</i>	Max Press	From	To	Frac	Avg		15 Min.	
Well Connection <i>P.C.</i>	Annulus Vol.	From	To		HHP Used		Annulus Pressure	
Plug Depth <i>3547</i>	Packer Depth	From	To	Flush <i>85.5 Bbl. 20% H₂O₂</i>	Gas Volume		Total Load	

Customer Representative <i>Rick Pope</i>	Station Manager <i>Scotty</i>	Treater <i>Bobby</i>
---	----------------------------------	-------------------------

Service Units <i>14866</i>	<i>19</i>	<i>19</i>	<i>19</i>	<i>19</i>					
Driver Names <i>Dick</i>	<i>Percy</i>	<i>McGuire</i>	<i>Rafael</i>	<i>Conzales</i>					

Time	Casing Pressure	Tubing Pressure	Bbls. Pumped	Rate	Service Log
<i>7:30</i>					<i>On location - Safety Meeting</i>
<i>7:30</i>					<i>Run Csg. 5 1/2" 14# Cont. - 3-4-5-6-7-8-9-10-13-14</i>
<i>0110</i>					<i>Csg. on Bottom</i>
<i>0120</i>					<i>Hook up to Csg. - Break Circ. w/ Rig</i>
<i>0210</i>	<i>200</i>		<i>20</i>	<i>5.0</i>	<i>KPL</i>
<i>0234</i>	<i>200</i>		<i>12</i>	<i>5.0</i>	<i>Mud Flush</i>
<i>0239</i>	<i>200</i>		<i>3</i>	<i>5.0</i>	<i>H₂O Spacer</i>
<i>0238</i>	<i>200</i>		<i>50</i>	<i>5.5</i>	<i>Mix Cont. @ 15.4#/gal</i>
<i>0252</i>					<i>Release Plug - Clear Pump + Lines</i>
<i>0252</i>	<i>100</i>			<i>6.0</i>	<i>Start Disp.</i>
<i>0303</i>	<i>400</i>		<i>60</i>	<i>5.1</i>	<i>Lift. Pressure</i>
<i>0310</i>	<i>1500</i>		<i>85.5</i>		<i>Plug Down</i>
<i>0315</i>			<i>7</i>		<i>Plug Rot Hole & Mouse Hole</i>
					<i>Circulation Thru Job</i>
					<i>Job Complete</i>

Thanks, Bobby

RECEIVED
KANSAS CORPORATION COMMISSION

JUL 28 2008

CONSERVATION DIVISION
WICHITA, KS

BASIC

energy services, L.P.

FIELD ORDER 18516

Subject to Correction

Date	4/10/08	Customer ID		Lease	Soderstrom	Well #	13	Legal	21-17s-13w
CHARGE		T-N Engineering		County	Barton	State	Ks.	Station	Platt
				Depth		Formation		Shoe Joint	42.67
				Casing	5 1/2	Casing Depth	3397	TD	3552
				Job Type	CNW-L.S.				
				Customer Representative	Rick Popp		Treater	Bobby Drake	
AFE Number		PO Number		Materials Received by	X <i>Rick Popp</i>				

Station Code	Product Code	QUANTITY	MATERIALS, EQUIPMENT, and SERVICES USED	UNIT PRICE	AMOUNT
P	CP105	175sk.	AA2		2985 ⁰⁰
P	CP103	25sk.	60/40P2		275 ⁰⁰
P	CC105	42lb.	De-Foamer (Powder)		168 ⁰⁰
P	CC111	824lb.	Salt (Fine)		412 ⁰⁰
P	CC112	50lb.	Cement Friction Reducer		300 ⁰⁰
P	CC129	132lb.	FLA-322		990 ⁰⁰
P	CC201	875lb.	Gilson		586 ²⁵
CONFIDENTIAL					
JUL 22 2008					
P	C716	10gal	CP-1, KIL Substitute		440 ⁰⁰
P	PC151	900gal	Mud Flush		430 ⁰⁰
P	CF607	1ea.	Latch Down Plug + Baffle, 5 1/2" (Blue)		410 ⁰⁰
P	CF1251	1ea.	Auto Fill Float Shoe, 5 1/2" (Blue)		360 ⁰⁰
P	CF1651	10ea.	Turbolizer, 5 1/2" (Blue)		1100 ⁰⁰
P	E101	730mi.	Heavy Equipment Mileage		910 ⁰⁰
P	E113	1608mi.	Bulk Delivery		972 ⁸⁰
P	E100	65mi.	Pick up Mileage		276 ²⁵
P	CE240	200sk.	Bleeding + Mixing Service Charge		280 ⁰⁰
P	SC03	1ea.	Service Supervisor		175 ⁰⁰
P	CE204	1ea.	Depth Charge, 3001'-4000'		2160 ⁰⁰
P	CE504	1ea.	Plug Container		250 ⁰⁰
P	CE501	1ea.	Casing Swivel Rental		200 ⁰⁰
Discounted Price -					\$ 10,736 ³⁴

RECEIVED
KANSAS CORPORATION COMMISSION
JUL 28 2008
CONSERVATION DIVISION
WICHITA, KS

As consideration, the Customer agrees:

- a) To pay BASIC ENERGY SERVICES, L.P. in accordance with the rates and terms stated in BASIC ENERGY SERVICES, L.P.'s current price list. Invoices are payable NET 30 after date of invoice. Upon Customer's default payment of Customer's account by the last day of the month following the month in which the invoice is dated, Customer agrees to pay interest thereon after default at the highest lawful contract rate applicable but never to exceed 18% per annum. In the event it becomes necessary to employ attorneys to enforce collection of said account, Customer agrees to pay all collection cost and attorney fees in the amount of the unpaid account.
- b) To defend indemnify, release and hold harmless BASIC ENERGY SERVICES, L.P., its divisions, subsidiaries, parent and affiliated companies and the officers, directors, employees, agents and servants of all of them from and against any claims, liability, expenses, attorney's fees and costs of defense to the extent permitted by law for:
1. Damage to property owned by, in the possession of, or leased by Customer, and/or the well owner (if different from Customer), including but not limited to, surface and subsurface damage. The term "well owner" shall include working and royalty interest owners.
 2. Reservoir, formation, or well loss or damage, subsurface trespass or any action in the nature thereof.
 3. Personal injury of death or property damage (including, but not limited to, damage to the reservoir, formation or well), or any damages whatsoever, growing out of or in any way connected with or resulting from pollution, subsurface pressure, losing control of the well and/or a well blowout or the use of radioactive material. The amount of this invoice is due and payable at BASIC ENERGY SERVICES, L.P., Dept. No. 1131, Tulsa, Oklahoma 74182. All terms of the Service order with customer are incorporated herein and made a part hereof by reference.

The defense, indemnity, release and hold harmless obligations of Customer provided for in this Section b) and Section c) below shall apply to claims or liability even if caused or contributed to by BASIC ENERGY SERVICES, L.P. negligence, strict liability, or operated, or furnished by BASIC ENERGY SERVICES, L.P. or any defect in the data, products, supplies, materials, or equipment of BASIC ENERGY SERVICES, L.P. whether the preparation, design, manufacture, distribution, or marketing thereof, or from a failure to warn any person of such defect. Such defense, indemnity, release and hold harmless obligations of Customer shall not apply where the claims or liability are caused by the gross negligence or willful misconduct of BASIC ENERGY SERVICES, L.P. The term "BASIC ENERGY SERVICES, L.P." as used in said Section b) and c) shall mean BASIC ENERGY SERVICES, L.P., its divisions, subsidiaries, parent and affiliated companies, and the officers, directors, employees, agents and servants of all of them.

c) That because of the uncertainty of variable well conditions and the necessity of relying on facts and supporting services furnished by others, BASIC ENERGY SERVICES, L.P. is unable to guarantee the effectiveness of the products, supplies, or materials, nor the results of any treatment or service, nor the accuracy of any chart interpretation, research analysis, job recommendation or other data furnished by BASIC ENERGY SERVICES, L.P. BASIC ENERGY SERVICES, L.P. personnel will use their best efforts in gathering such information and their best judgement in interpreting it, but Customer agrees that BASIC ENERGY SERVICES, L.P. shall not be liable for and Customer shall indemnify BASIC ENERGY SERVICES, L.P. against any damages from the use of such information.

d) That BASIC ENERGY SERVICES, L.P. warrants only title to the products, supplies, and materials and that the same are free from defects in workmanship and materials. THERE ARE NO WARRANTIES, EXPRESS OR IMPLIED OF MERCHANTABILITY, FITNESS OR OTHERWISE WHICH EXTEND BEYOND THOSE STATED IN THE IMMEDIATELY PRECEDING SENTENCE. BASIC ENERGY SERVICES, L.P.'s liability and Customer's exclusive remedy in and cause of action (whether in contract, tort, breach of warranty or otherwise) arising out of the sale or use of any products, supplies or materials is expressly limited to the replacement of such products, supplies or materials on their return to BASIC ENERGY SERVICES, L.P. or, at BASIC ENERGY SERVICES, L.P.'s option, to the allowance to the Customer of credit for the cost of such items. In no event shall BASIC ENERGY SERVICES, L.P. be liable for special, incidental, indirect, punitive or consequential damages.

e) To waive the provisions of the Deceptive Trade Practices - Consumer Protection Act, to the extent permitted by law. We certify that the Fair Labor Standards Act of 1938, as amended, has been complied with in the production of goods and/or with respect to service furnished under this contract.

f) That this contract shall be governed by the law of the state where services are performed or materials are furnished.

g) That BASIC ENERGY SERVICES, L.P. shall not be bound by any changes or modifications in this contract, except where such change or modification is made in writing by a duly authorized manager of BASIC ENERGY SERVICES, L.P.

Quality Oilwell Cementing Inc.

740 W WICHITA
P.O. Box 32
Russell, KS 67665

Invoice

Date	Invoice #
4/7/2008	804

Bill To
TNT ENGINEERING INC 3711 MAPLEWOOD STE 201 WICHITA FALLS TX 76308

P.O. No.	Terms	Project
	Net 30	Soderstrom #13

Quantity	Description	Rate	Amount
350	common	12.00	4,200.00T
8	GEL	18.00	144.00T
12	Calcium	50.00	600.00T
370	handling	2.00	740.00
5,920	.08 * 370 SACKS * 16 MILES	0.08	473.60
1	8 5/8 solid rubber plug	102.00	102.00T
1	surface pipe 500-1500ft	950.00	950.00
16	pump truck mileage charge	6.00	96.00
731	discount 10% if paid within 30 days DISCOUNT HAS ALREADY BEEN DEDUCTED	-1.00	-731.00
	LEASE: SODERSTROM WELL #13		
	Barton county Sales Tax	6.55%	330.51

CONFIDENTIAL
JUL 22 2008
KCC

Voucher 17575⁹ Inv 804
Vendor 2124 Date 4/7
Amt 6905.11 Disc _____
Due 4/30 Month _____
G. L. 5010 Sub 8 Lse 105353

(B)

RECEIVED
KANSAS CORPORATION COMMISSION
JUL 28 2008
CONSERVATION DIVISION
WICHITA, KS

Thank you for your business. Dave	Total	\$6,905.11
-----------------------------------	--------------	------------

QUALITY OILWELL CEMENTING, INC.

Phone 785-483-2025
Cell 785-324-1041

Home Office P.O. Box 32 Russell, KS 67665

No. 1898

Date	Sec.	Twp.	Range	Called Out	On Location	Job Start	Finish		
4-5-08	21	17	1			6:15 AM	7:45 AM		
Lease	Well No.		Location		County	State			
Contractor				Owner					
Type Job				To Quality Oilwell Cementing, Inc. You are hereby requested to rent cementing equipment and furnish cementer and helper to assist owner or contractor to do work as listed.					
Hole Size	T.D.		Charge To						
Csg.	Depth		To						
Tbg. Size	Depth		Street						
Drill Pipe	Depth		City		State				
Tool	Depth		The above was done to satisfaction and supervision of owner agent or contractor.						
Cement Left in Csg.	Shoe Joint		CEMENT						
Press Max.	Minimum								
Meas Line	Displace								
Perf.									
EQUIPMENT				Amount Ordered	350 Com. 12 @ 12				
Pumptrk	No.	Cementer		Consisting of					
Bulktrk	No.	Driver		Common	350 @ 12 ⁰⁰		4200 ⁰⁰		
Bulktrk	No.	Driver		Poz. Mix					
JOB SERVICES & REMARKS				Gel.	8 @ 18 ⁰⁰		144 ⁰⁰		
Pumptrk Charge	Long Surface		950 ⁰⁰	Chloride	12 @ 50 ⁰⁰		600 ⁰⁰		
Mileage	16 @ 6 ⁰⁰		96 ⁰⁰	Hulls					
Footage				Salt					
			Total	Flowseal					
Remarks:									
				Sales Tax					
				Handling	370 @ 2 ⁰⁰		740 ⁰⁰		
				Mileage	89 per hr per mile		473 ⁶⁰		
				Sub Total					
				Total					
				Floating Equipment & Plugs	1 S. Rubber Lig		102 ⁰⁰		
				Squeeze Manifold					
				Rotating Head					
RECEIVED SPEEAS CORPORATION JUL 7 8 2008 CONSERVATION DIVISION				Tax			330.51		
				Discount			731.00		
				Total Charge			6905.11		
Signature									