

TO BE FILED WITH THE STATE CORPORATION COMMISSION
PRIOR TO COMMENCEMENT OF WELL

API Number 15-051-20,878
 (For office use only) -0000

1. Operator Jet Drilling Company, Inc., & Zetco
Petroleum, Inc.
 Address 514 One Twenty Bldg.
120 S. Market St., Wichita, Kans. 67202
2. Contractor co. tools, Jet Drilling Company, Inc.
 Address 514 One Twenty Bldg., Wichita, Ks. 67202
3. Type of Equipment: Rotary Cable Tool _____
4. Well to be Drilled for: Oil Gas _____
 Disposal _____ Input _____ Other _____
5. Depth of Deepest Fresh Water within 1 mile 125 ft.
6. Depth of Municipal Water Well within 3 miles none ft.
7. Depth to Protect all Fresh Water 200 ft.
8. Amount of Surface Casing to be set 250 ft.
9. Alternate No. 1 _____ No. 2

Starting Date 1/4/73

County Ellis

Sec 20 Twp 11S S Rge 16 W

Spot Location NE SE NW/4
330' from E line and 990' from
South line
 Nearest Lease Line 330 ft.

Lease Name Sisters of St. Agnes

Well No. 3

Est. Total Depth 3340 ft.

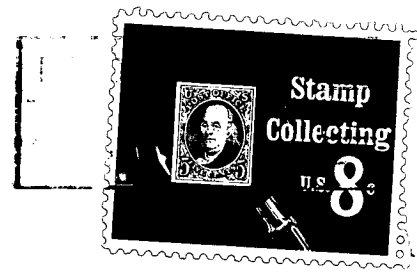
REMARKS:

Will drill 12 $\frac{1}{4}$ " surface hole to approx. 250'. Then rat hole ahead with 7-7/8" hole to approx 980' to test for any water sands and will then set surface to protect any fresh water.

Signature of Operator JET DRILLING COMPANY, INC.

By Arthur M. Scott, Sec. -Treas.





**State Corporation Commission of Kansas
Conservation Division
P. O. Box 17027
Wichita, Kansas 67217**

**RECEIVED
STATE CORPORATION COMMISSION
JAN 4 1973
CONSERVATION DIVISION
Wichita, Kansas**

(IF PREFERRED, MAIL IN ENVELOPE)