

TYPE

# NOTICE OF INTENTION TO DRILL

C-1

TO BE FILED WITH THE STATE CORPORATION COMMISSION  
PRIOR TO COMMENCEMENT OF WELL

API Number 15-167-20,748-00  
(For office use only) 00

1. Operator Barton Oil Company

Starting Date June 1, 1975

Address 504 E. 5th St., Russell KS 67665

County Russell

2. Contractor Emphasis Oil Operations

Sec 10 Twp 13 S Rge 14 W

Address Box 506, Russell, KS 67665

Spot Location NW-NW-NW

3. Type of Equipment: Rotary X Cable Tool \_\_\_\_\_

Nearest Lease Line \_\_\_\_\_ 330 ft.

4. Well to be Drilled for: Oil X Gas \_\_\_\_\_

Lease Name Schmidt

Disposal \_\_\_\_\_ Input \_\_\_\_\_ Other \_\_\_\_\_

5. Depth of Deepest Fresh Water within 1 mile \_\_\_\_\_ 40 ft.

6. Depth of Municipal Water Well within 3 miles \_\_\_\_\_ None ft.

7. Depth to Protect all Fresh Water \_\_\_\_\_ 100 ft.

8. Amount of Surface Casing to be set \_\_\_\_\_ 200 ft.

Well No. - One

9. Alternate No. 1 \_\_\_\_\_ No. 2 X

Est. Total Depth \_\_\_\_\_ 3150 ft.

REMARKS:

Samples will be available

OPERATOR STATES THAT HE WILL COMPLY WITH K. S. A. 55-128

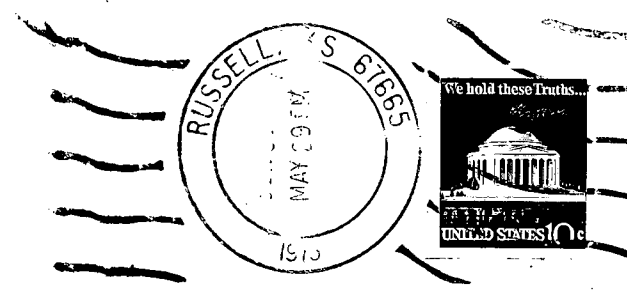
Signature of Operator \_\_\_\_\_

*Athol C. Barton*



*[Handwritten initials]*

1975  
MAY 30 1975



**State Corporation Commission of Kansas**  
**Conservation Division**  
**P. O. Box 17027**  
**Wichita, Kansas 67217**

MAY 30 1975  
05-30-1975

(IF PREFERRED, MAIL IN ENVELOPE)