

STATE OF KANSAS
STATE CORPORATION COMMISSION

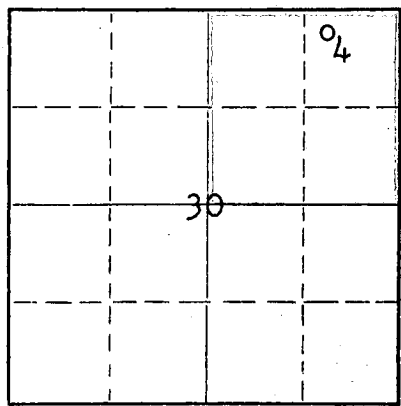
Give All Information Completely
Make Required Affidavit
Mail or Deliver Report to:
Conservation Division
State Corporation Commission
212 North Market, Insurance Bldg.
Wichita, Kansas

WELL PLUGGING RECORD

Ellis County, Sec. 30 Twp. 11S Rge. (E) 16 (W)

Location as "NE/CNW/SW" or footage from lines NW/4 NE/4 NE/4
Lease Owner Skelly Oil Company
Lease Name Lydia DeHoff Well No. 4
Office Address Box 1650, Tulsa, Oklahoma
Character of Well (completed as Oil, Gas or Dry Hole) Oil
Date well completed November 5, 19 48
Application for plugging filed February 19, 19 62
Application for plugging approved February 21, 19 62
Plugging commenced February 26, 19 62
Plugging completed March 1, 19 62
Reason for abandonment of well or producing formation Depleted

NORTH



Locate well correctly on above Section Plat

If a producing well is abandoned, date of last production February 19, 1962
Was permission obtained from the Conservation Division or its agents before plugging was commenced? Yes

Name of Conservation Agent who supervised plugging of this well Mr. Eldon Petty
Producing formation Lansing Lime Depth to top 3004' Bottom Total Depth of Well 3333' Feet
Show depth and thickness of all water, oil and gas formations. PB 3196'

OIL, GAS OR WATER RECORDS

CASING RECORD

FORMATION	CONTENT	FROM	TO	SIZE OD	PUT IN	PULLED OUT
Arbuckle Lime	Oil	3313 1/2'	3333'	8-5/8"	987' 0"	None
Lansing Lime	Oil	3020'	3188'	5-1/2"	3346' 3"	2438'

Describe in detail the manner in which the well was plugged, indicating where the mud fluid was placed and the method or methods used in introducing it into the hole. If cement or other plugs were used, state the character of same and depth placed, from feet to feet for each plug set.

Sand	3196' to 3000'
5 sacks of cement	3000' to 2960'
Mud	2960' to 440'
Rock bridge	440' to 430'
20 sacks of cement	430' to 370'
Mud	370' to 190'
Rock bridge	190' to 180'
20 sacks of cement	180' to 120'
Mud	120' to 35'
Rock	35' to 30'
10 sacks of cement	30' to 6'
Surface soil	6' to Surface

RECEIVED
STATE CORPORATION COMMISSION
3-30-1962
MAR 30 1962
CONSERVATION DIVISION
Wichita, Kansas

Name of Plugging Contractor Ace Pipe Pulling Company
Address P.O. Box 304, Great Bend, Kansas

STATE OF Kansas, COUNTY OF Reno, ss.
D. E. Smith (employee of owner) of the above-described well, being first duly sworn on oath, says: That I have knowledge of the facts, statements, and matters herein contained and the log of the above-described well as filed and that the same are true and correct. So help me God.

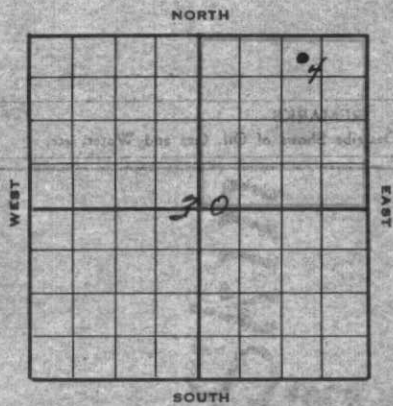
(Signature) D. E. Smith
P.O. Box 391, Hutchinson, Kansas (Address)

SUBSCRIBED AND SWORN TO before me this 27th day of March, 1962

My commission expires April 7, 1963 Josephine L. Johnson Notary Public.



15-051-02087-00-00
SKELLY OIL COMPANY



Well Record

Lease Name and No. Lydia Dohoff 19408 Well No. 4 Elev. 1777'

Lease Description NE/4 of Section 30-113-16", Ellis County, Kansas

Location made Oct. 15, 1948 by E. J. Tompler

330 feet from North line 990 feet from East line NE/4

feet from South line feet from West line of Sec. 30

Work com'd 10/16 19 48 Rig comp'd 10/18 19 48 Drlg. com'd 10/18 19 48 Drlg. comp'd 11/12 19 48

Rig Contractor Hornden Drilling Company

Drilling Contractor Hornden Drilling Company, Tulsa, Oklahoma

Rotary Drilling from Top to 3318 1/2' Cable Tool Drilling from 3318 1/2' to 3333'

Commenced Producing November 5, 1948 Initial Prod. before shot or acid 1/2 bbl. oil/12 hrs. Bbls.

Initial Prod. after shot or acid FOR 24 hrs., 54 bbls. oil Bbls.

57 bbls. wt. to estab. 24 hr. 300 pot. of Volume 54 bbls. Cu. ft.

Dry Gas Well Press. Volume Cu. ft.

Casing Head Gas Pressure Volume Cu. ft.

Braden Head (8-5/8" 251' OD) Gas Pressure Volume Cu. ft.

Braden Head () Gas Pressure Volume Cu. ft.

PRODUCING FORMATION Arhuckle Line Top 3313 1/2' Bottom 3333' TOTAL DEPTH 3333'

CASING RECORD

Size	Wt.	Thds.	Where Set	PULLED OUT			LEFT IN			KIND	Cond'n	CEMENTING	
				Jts.	Feet	In.	Jts.	Feet	In.			Sacks Used	Method Employed
8-5/8"	28	32	985				31	987	0	H40 R2	NEW	450	Halliburton
5-1/2"	14	82	(Lot #29)				47	1425	2	J55 R2	93		
5-1/2"	14	82	3313 1/2'				60	1921	1	H40 R2	NEW	150	Halliburton
(8-5/8" OD casing set 6' in cellar and 5 1/2" cased to derrick floor)													

(Used 1 - 5 1/2" OD Baker Combination Guide & Float shoe)

RECEIVED
 STATE CORPORATION COMMISSION
 5-30-1962
 MAR 30 1962
 CONSERVATION DIV.
 Wichita, Kans.

Liner Set at Length Perforated at

Liner Set at Length Perforated at

Packer Set at Size and Kind

Packer Set at Size and Kind

SHOT OR ACID TREATMENT RECORD

	FIRST	SECOND	THIRD	FOURTH
Date	11/6/48	11/13/48	11/14/48	
Acid Used				
Size Shot	750	200	500	
Shot Between	3313 1/2' and 3319'	3313 1/2' and 3333'	3313 1/2' and 3333'	
Size of Shell	(Jetted)			
Put in by (Co.)	Dowell Inc.	Dowell Inc.	Dowell Inc.	
Length anchor				
Distance below Cas'g				
Damage to Casing or Casing Shoulder				

SIGNIFICANT GEOLOGICAL FORMATIONS

NAME	Top	Bottom	GAS		OIL		REMARKS
			From	To	From	To	
Hebner shale	2961'	2959'					
Lansing lime	3009'	3004'					
Conglomerate	3283 1/2'	3286'					
Simpson series	3306 1/2'						
Simpson shale	3307 1/2'	3302'					
Arhuckle line	3312 1/2'	3316'			3318 1/2'	3319'	Show free oil
					3327 1/2'	3330'	31. porosity, no sat.
					3330'	3333'	Saturated

CLEANING OUT RECORDS

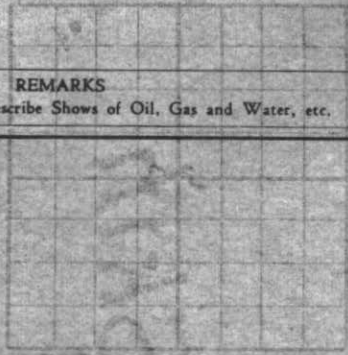
	DATE COMMENCED	DATE COMPLETED	PROD. BEFORE	PROD. AFTER	REMARKS
1st					See Reverse for other details.
2nd					" " " " "
3rd					" " " " "
4th					" " " " "

PLUGGING BACK AND DEEPENING RECORDS

	Date Commenced	Date Completed	No. Feet Plugged Back or Deepened	Prod. Before	Prod. After	REMARKS
1st						See Reverse for other details.
2nd						" " " " "
3rd						" " " " "
4th						" " " " "

(See Reverse for Record of Formation)

RECORD OF FORMATIONS



FORMATION	TOP	BOTTOM	REMARKS
Surface soil and clay	0	20	
Sand rock	20	40	
Shale and shells	40	140	
Shale and red bed	140	275	
Pyrites, sand and red bed	275	490	
Red bed and sand	490	780	
Shale and shells	780	970	
Anhydrite	970	985	TOP ANHYDRITE 970'
Set and cemented 8-5/8" OD, 28# 8R thd., K-40, R-2, R.E.W. steel casing at 985' with 450 sacks of cement and 15 sacks of aquagel.			
Sand and anhydrite	985	1015	
Red bed, shale and shells	1015	1535	
Shale and shells	1535	1660	
Lime	1660	1770	
Lime and shale	1770	1860	
Lime	1860	2105	
Lime and shale	2105	2220	
Lime	2220	2320	
Lime and shale	2320	2860	
Lime and chert	2860	2880	
Lime	2880	3310	TOP LIMESTONE SHALE 2961'

FORMATION	TOP	BOTTOM	REMARKS
Sandy dolomite	3310	3316	
Grey and brown cherty dolomite	3316	3320	
Brown dolomite	3320	3322	
Spotted porosity and stain Fair porosity and saturation Set and cemented 1425' 2" of 5 1/2" OD, 14# 8R thd., J-55, R-2, seamless steel (Lot #29) and 1921' 1" of 5 1/2" OD, 14# 8R thd., H-40, R-2, R.E.W. steel casing at 3313 1/2' with 150 sacks of cement and 3 sacks of aquagel. Finished cementing at 6:00 PM 10/31/48.			
Moved in and rigged up cable tools and bailed the hole dry on Nov. 3, and 5 1/2" casing tested OK. Drilled cement plug and cleaned out to bottom. Correction: 3322' to 3318 1/2' Rotary table equals 3318 1/2' Jarrier floor. No shows			

Soft brown porous dolomite and chert 3318 1/2' to 3319'

Show of free oil, tested 1 hr., no fill up. Tested 12 hrs., 1 1/2 bbl. oil and no water.

On November 6, ran 2" tubing and filled hole with 59 barrels of oil, then jetted formation with 750 gallons of Dowell #1-17 acid as follows:

ACID TREATMENT NO. 1 - Between 3313 1/2' and 3319'
Treatment put in 11/6/48 by Powell Inc., using 750 gallons of acid and 91 barrels of oil to fill hole and flush.

TIME	AMOUNT	REMARKS
8:04 PM		Filled hole with 75 1/2 barrels of oil
9:45 PM	300	500 gallons of acid in tubing, drop jet gun
10:10 PM	215	Start pump
10:15 PM	300	750 gallons of acid in tubing, jet gun not seated
10:27 PM	1000	Reverses 540 gallons acid into tubing
11:44 PM	1000	540 gallons jetted
12:06 AM	300	Start displacing through casing
2:00 AM	1200	63 gallons of acid in formation
4:00 AM	1400	105 gallons of acid in formation
5:06 AM		120 gallons of acid in formation
5:25 AM	850	230 gallons of acid in formation
5:45 AM	800	500 gallons of acid in formation
5:52 AM	800	750 gallons of acid in formation

After treatment swabbed through 2" tubing 8 hours, 70 barrels of oil and no water, and oil exhausted (oil used in treating). Shut down 12 hours and showed no oil. Pulled 2" tubing and bailed 3 hours, no fluid. Ran Dowell permeability survey and found well taking fluid at rate of 11.53 gallons per minute at 3313 1/2', or around bottom of 5 1/2" casing at 775# pressure (used 87 barrels of oil and 10 barrels water during test).

Swabbed through 5 1/2" casing 6 hours, 50 barrels of oil and no water. On November 9th, plugged back with sand from 3319' to 3315', then squeezed 60 gallons of Dowell plastic around bottom of 5 1/2" casing at 3314'.

On November 11, drilled plastic plug and cleaned out to bottom, tested 1 hour, no shows.

FORMATION	TOP	BOTTOM	REMARKS
Brown and white cherty dolomite w/ streaks of sand	3319	3321	No shows