

CONFIDENTIAL

KANSAS CORPORATION COMMISSION
OIL & GAS CONSERVATION DIVISION

Form ACO-1
September 1999
Form Must Be Typed

ORIGINAL

WELL COMPLETION FORM
WELL HISTORY - DESCRIPTION OF WELL & LEASE

8/20/10

Operator: License # 3842
Name: LARSON ENGINEERING, INC.
Address: 562 WEST STATE ROAD 4
City/State/Zip: OLMITZ, KS 67564-8561
Purchaser: NCRA
Operator Contact Person: TOM LARSON
Phone: (620) 653-7368
Contractor: Name: H.D. DRILLING, LLC
License: 33935
Wellsite Geologist: ROBERT LEWELLYN

Designate Type of Completion:
 New Well Re-Entry Workover
 Oil SWD SLOW Temp Abd.
 Gas ENHR SIGW
 Dry Other (Core, WSW, Expl., Cathodic, etc)

If Workover/Re-entry: Old Well Info as follows: **CONFIDENTIAL**
Operator: AUG 20 2008

Well Name: _____
Original Comp. Date: _____ Original Total Depth: KCC
 Deepening Re-perf. Conv. to Enhr./SWD
 Plug Back _____ Plug Back Total Depth _____
 Commingled _____ Docket No. _____
 Dual Completion _____ Docket No. _____
 Other (SWD or Enhr.?) _____ Docket No. _____
4/26/2008 5/7/2008 5/28/2008
Spud Date or Date Reached TD Completion Date or Recompletion Date

API No. 15 - 101-22093-00-00
County: LANE
SW NE NW NE Sec. 29 Twp. 18 S. R. 29 East West
350 feet from NORTH Line of Section
1785 feet from EAST Line of Section
Footages Calculated from Nearest Outside Section Corner:
(circle one) NE SE NW SW
Lease Name: EHMKE Well #: 2-29
Field Name: REIFSCHNEIDER, SE
Producing Formation: MARMATON
Elevation: Ground: 2812' Kelly Bushing: 2817'
Total Depth: 4631' Plug Back Total Depth: 4584'
Amount of Surface Pipe Set and Cemented at 272 Feet
Multiple State Cementing Collar Used? Yes No
If yes, show depth set 2104 Feet
If Alternate II completion, cement circulated from 2104
feet depth to SURFACE w/ 215 sx cmt.

Drilling Fluid Management Plan AH-II NH 11-20-08
(Data must be collected from the Reserve Pit)
Chloride content 9200 ppm Fluid volume 440 bbls
Dewatering method used ALLOWED TO DRY
Location of fluid disposal if hauled offsite: _____
Operator Name: _____
Lease Name: _____ License No.: _____
Quarter _____ Sec. _____ Twp. _____ S. R. _____ East West
County: _____ Docket No.: _____

INSTRUCTIONS: An original and two copies of this information shall be filed with the Kansas Corporation Commission, 130 South Market-Room 2078, Wichita, Kansas 67202, within 120 days of the spud date, recompletion, workover or conversion of a well. Rule 82-3-130, 82-3-106 and 82-3-107 apply. Information on side two of this form will be held confidential for a period of 12 months if requested in writing and submitted with the form (see rule 82-3-107 for confidentiality in excess of 12 months). One copy of all wireline logs and geologist well report shall be attached with this form. ALL CEMENTING TICKETS MUST BE ATTACHED. Submit CP-4 form with all plugged wells. Submit CP-111 form with all temporarily abandoned wells.

All requirements of the statutes, rules and regulations promulgated to regulate the oil and gas industry have been fully complied with and the statements herein are complete and correct to the best of my knowledge.

Signature: Carol Larson
Title: SECRETARY/TREASURER Date: 8/20/08
Subscribed and sworn to before me this 20th day of AUGUST, 2008.
Notary Public: Debra Ludwig
Date Commission Expires: MAY 5, 2012

KCC Office Use ONLY
 Letter of Confidentiality Attached
If Denied, Yes Date: _____
 Wireline Log Received
 Geologist Report Received
 UIC Distribution

DEBRA J. LUDWIG
Notary Public - State of Kansas
My Appt. Expires 5/5/2012

RECEIVED
KANSAS CORPORATION COMMISSION
AUG 21 2008
CONSERVATION DIVISION
WICHITA, KS

Operator Name: LARSON ENGINEERING, INC. Lease Name: EHMKE Well #: 2-29

Sec. 29 Twp. 18 S. R. 29 East West County: LANE

INSTRUCTIONS: Show important tops and base of formation penetrated. Detail all cores. Report all final copes of drill stem tests giving interval tested, time tool open and closed, flowing and shut-in pressures, whether shut-in pressure reached static level, hydrostatic pressures, bottom hole temperature, fluid recovery, and flow rates if gas to surface test, along with final chart(s). Attach extra sheet if more space is needed. Attach copy of all Electric Wireline Logs surveyed. Attach final geologist well site report.

Drill Stem Tests Taken <input type="checkbox"/> Yes <input checked="" type="checkbox"/> No <i>(Attach Additional Sheets)</i> Sample Sent to Geological Survey <input type="checkbox"/> Yes <input checked="" type="checkbox"/> No Cores Taken <input type="checkbox"/> Yes <input checked="" type="checkbox"/> No Electric Log Run <input checked="" type="checkbox"/> Yes <input type="checkbox"/> No <i>(Submit Copy)</i> List All E. Logs Run: DUAL INDUCTION DUAL COMP POROSITY BOREHOLE COMP SONIC MICRORESISTIVITY	<input checked="" type="checkbox"/> Log Formation (Top), Depth and Datum <input type="checkbox"/> Sample <table style="width:100%; border-collapse: collapse;"> <thead> <tr> <th style="text-align: left;">Name</th> <th style="text-align: left;">Top</th> <th style="text-align: left;">Datum</th> </tr> </thead> <tbody> <tr><td>ANHYDRITE</td><td>2153</td><td>+664</td></tr> <tr><td>BASE ANHYDRITE</td><td>2189</td><td>+628</td></tr> <tr><td>HEEBNER SHALE</td><td>3914</td><td>-1097</td></tr> <tr><td>LANSING - KANSAS CITY</td><td>3956</td><td>-1139</td></tr> <tr><td>STARK SHALE</td><td>4233</td><td>-1416</td></tr> <tr><td>BASE KANSAS CITY</td><td>4311</td><td>-1494</td></tr> <tr><td>PAWNEE</td><td>4426</td><td>-1609</td></tr> <tr><td>FORT SCOTT</td><td>4475</td><td>-1658</td></tr> <tr><td>CHEROKEE</td><td>4500</td><td>-1683</td></tr> <tr><td>MISSISSIPPIAN</td><td>4566</td><td>-1749</td></tr> </tbody> </table>	Name	Top	Datum	ANHYDRITE	2153	+664	BASE ANHYDRITE	2189	+628	HEEBNER SHALE	3914	-1097	LANSING - KANSAS CITY	3956	-1139	STARK SHALE	4233	-1416	BASE KANSAS CITY	4311	-1494	PAWNEE	4426	-1609	FORT SCOTT	4475	-1658	CHEROKEE	4500	-1683	MISSISSIPPIAN	4566	-1749
Name	Top	Datum																																
ANHYDRITE	2153	+664																																
BASE ANHYDRITE	2189	+628																																
HEEBNER SHALE	3914	-1097																																
LANSING - KANSAS CITY	3956	-1139																																
STARK SHALE	4233	-1416																																
BASE KANSAS CITY	4311	-1494																																
PAWNEE	4426	-1609																																
FORT SCOTT	4475	-1658																																
CHEROKEE	4500	-1683																																
MISSISSIPPIAN	4566	-1749																																

CASING RECORD <input checked="" type="checkbox"/> New <input type="checkbox"/> Used							
Report all strings set - conductor, surface, intermediate, production, etc.							
Purpose of string	Size Hole Drilled	Size Casing Set (in O.D.)	Weight Lbs./Ft.	Setting Depth	Type of Cement	# Sacks Used	Type and Percent Additives
SURFACE	12-1/4"	8-5/8"	23#	272'	CLASS A	175	2% GEL, 3% CC
PRODUCTION	7-7/8"	5-1/2"	15.5#	4630'	SMD	125	1/4#/SK FLOCELE
					EA-2	100	7#/SK GILSONITE, 1/4#/SK FLOCELE, 3/4% CFR-2

ADDITIONAL CEMENTING/SQUEEZE RECORD					
Purpose:	Depth		Type of Cement	# Sacks Used	Type and Percent Additives
	Top	Bottom			
<input type="checkbox"/> Perforate <input type="checkbox"/> Protect Casing <input type="checkbox"/> Plug Back TD <input type="checkbox"/> Plug Off Zone	SURF	2104'	SMD	215	1/4#/SK FLOCELE

Shots per Foot	PERFORATION RECORD - Bridge Plugs Set/Type Specify Footage of Each Interval Perforated	Acid. Fracture, Shot, Cement, Squeeze Record (Amount and Kind of Material Used)	Depth
4	4379-82	250 GAL 15% MCA	4379-82

TUBING RECORD	Size 2-3/8"	Set At 4577'	Packer At	Liner Run <input type="checkbox"/> Yes <input checked="" type="checkbox"/> No
Date of First, Resumed Production, SWD or Enhr. 5/28/08		Producing Method <input type="checkbox"/> Flowing <input checked="" type="checkbox"/> Pumping <input type="checkbox"/> Gas Lift <input type="checkbox"/> Other (Explain)		
Estimated Production Per 24 Hours	Oil Bbls. 65	Gas Mcf 0	Water Bbls. 0	Gas-Oil Ratio Gravity 40

Disposition of Gas Vented Sold Used on Lease Open Hole Perf. Dually Comp. Commingled Production Interval 4379-4382

RECEIVED
KANSAS CORPORATION COMMISSION

AUG 21 2008



CHARGE TO: **LARSON OPERATING**
 ADDRESS
 CITY, STATE, ZIP CODE

TICKET

No 14242

PAGE 1 OF 1

CONFIDENTIAL
 AUG 20 2008
 KCC

1. SERVICE LOCATIONS NESS City, Ks	WELL/PROJECT NO. 2-29	LEASE EHMKE	COUNTY/PARISH LANE	STATE Ks	CITY	DATE 5-16-08	OWNER SAME
2.	TICKET TYPE <input checked="" type="checkbox"/> SERVICE <input type="checkbox"/> SALES	CONTRACTOR WDS WEST WELL SERVICE	RIG NAME/NO.	SHIPPED VIA CT	DELIVERED TO LOCATION	ORDER NO.	
3.	WELL TYPE OIL	WELL CATEGORY DEVELOPMENT	JOB PURPOSE CONCRETE PORT COLLAR	WELL PERMIT NO.	WELL LOCATION DZHTON, Ks - SW, 2S, 1E, 1/2NW		
4. REFERRAL LOCATION	INVOICE INSTRUCTIONS						

PRICE REFERENCE	SECONDARY REFERENCE/ PART NUMBER	ACCOUNTING			DESCRIPTION	QTY.		U/M		UNIT PRICE	AMOUNT
		LOC	ACCT	DF							
575		1			MILEAGE # 104	40				6.00	240.00
578		1			PUMP SERVICE	1		2104	FT	1400.00	1400.00
330		1			SWIFT MULTI-DENSITY STAINERS	215				15.50	3332.50
276		1			FLOCELE	56				1.50	84.00
290		1			D-ADR	2				35.00	70.00
581		1			SERVICE CHARGE CONCR	225				1.90	427.50
583		1			DRAINAGE	22376		447.52	M	1.75	783.16

RECEIVED
 KANSAS CORPORATION COMMISSION
 AUG 21 2008
 CONSERVATION DIVISION
 WICHITA, KS

LEGAL TERMS: Customer hereby acknowledges and agrees to the terms and conditions on the reverse side hereof which include, but are not limited to, **PAYMENT, RELEASE, INDEMNITY, and LIMITED WARRANTY** provisions.

MUST BE SIGNED BY CUSTOMER OR CUSTOMER'S AGENT PRIOR TO START OF WORK OR DELIVERY OF GOODS

X
 DATE SIGNED **5-16-08** TIME SIGNED **0830** A.M. P.M.

REMIT PAYMENT TO:

SWIFT SERVICES, INC.
P.O. BOX 466
NESS CITY, KS 67560
785-798-2300

SURVEY	AGREE	UN-DECIDED	DIS-AGREE	PAGE TOTAL	6337.16
OUR EQUIPMENT PERFORMED WITHOUT BREAKDOWN?					
WE UNDERSTOOD AND MET YOUR NEEDS?				Lanc TAX 5.3%	184.78
OUR SERVICE WAS PERFORMED WITHOUT DELAY?					
WE OPERATED THE EQUIPMENT AND PERFORMED JOB CALCULATIONS SATISFACTORILY?				TOTAL	6521.94
ARE YOU SATISFIED WITH OUR SERVICE? <input type="checkbox"/> YES <input type="checkbox"/> NO					
<input type="checkbox"/> CUSTOMER DID NOT WISH TO RESPOND					

CUSTOMER ACCEPTANCE OF MATERIALS AND SERVICES The customer hereby acknowledges receipt of the materials and services listed on this ticket.

SWIFT OPERATOR Wade Wisco APPROVAL John Dawson

Thank You!

JOB LOG

SWIFT Services, Inc.

DATE **5-16-08** PAGE NO. **1**

CUSTOMER **CARSON OPERATING** WELL NO. **2-29** LEASE **ENHKE** JOB TYPE **CSMST PORT COLLAR** TICKET NO. **14242**

CHART NO.	TIME	RATE (BPM)	VOLUME (BBL/GAL)	PUMPS		PRESSURE (PSI)		DESCRIPTION OF OPERATION AND MATERIALS
				T	C	TUBING	CASING	
	0830							ON LOCATION
								2 3/8 x 5 1/2
								PORT COLLAR = 2104
	0845				✓		1000	PSE TEST CASING - HELD
	0850	3	2	✓		400		OP&J PORT COLLAR - INT RATE
	0855	4	119	✓		400		MIX CSMST 215 SKS SMD 1/4" FLOCCLE
	0935	3 1/2	7	✓		500		DISPLACE CSMST
	0945			✓		1000		CLOSE PORT COLLAR - PSE TEST - HELD
								CIRCULATE 15 SKS CSMST TO PIT
	1000	3 1/2	25	✓		450		RUN 4 JTS - CIRCULATE CLEAN
								WASH TRUCK
	1100							JOB COMPLETE

CONFIDENTIAL
AUG 20 2008
KCC

THANK YOU
WAWJE, BRETT, JEFF

RECEIVED
KANSAS CORPORATION COMMISSION
AUG 21 2008
CONSERVATION DIVISION
WICHITA, KS



PO Box 466
Ness City, KS 67560
Off: 785-798-2300

TICKET CONTINUATION

TICKET No. 13730

CUSTOMER Larsen Operating WELL 2-29 Ehmke DATE 5-7-08 PAGE 2 OF 2

PRICE REFERENCE	SECONDARY REFERENCE/ PART NUMBER	ACCOUNTING			TIME	DESCRIPTION	QTY.		UM		UNIT PRICE	AMOUNT
		LOG	ACCT	DF								
325		2				Standard Cement	100	SKS	9400	lbs	1275	1275.00
276		2				Flocele	25	lbs	1/4	#/sk	150	37.50
283		2				Salt	500	lbs	10	%	20	100.00
284		2				Coal Seal	470	lbs	5	SKS	3000	1500.00
285		2				GFR-1	47	lbs	5	%	450	211.50
277		2				Coal Seal (gilsonite)	700	lbs	1/2	%	40	280.00
330		2				SMD Cement	125	SKS	12408	lbs	1550	1937.50
276		2				Flocele	32	lb	1/4	SK	150	48.00
581		2				SERVICE CHARGE						
582		2				Cement						
						MILEAGE CHARGE						
						TOTAL WEIGHT						
						LOADED MILES						
						TON MILES						

RECEIVED
KANSAS CORPORATION COMMISSION
AUG 21 2008
CONSERVATION DIVISION
WICHITA, KS

SERVICE CHARGE
CUBIC FEET 225 SKS
MILEAGE CHARGE
TOTAL WEIGHT 23582 lbs
LOADED MILES 40
TON MILES 771.64
190
175
727.50
825.37

CONTINUATION TOTAL 5292.37

JOB LOG

SWIFT Services, Inc.

DATE 5-7-08 PAGE NO. 1

CUSTOMER Larson Operating WELL NO. 2-29 LEASE Ehmke JOB TYPE Cement 5 1/2" long string TICKET NO. 13730

CHART NO.	TIME	RATE (BPM)	VOLUME (BBL) (GAL)	PUMPS		PRESSURE (PSI)		DESCRIPTION OF OPERATION AND MATERIALS
				T	C	TUBING	CASING	
	1730							In location - Cat P.T. in
								Setup Tools - Rig running casing.
								TD-4631 SJ 42' KB-4630 15.5 #/ft
	1830							Drop Ball 4 Jts off bottom
	1845							Fin run casing - Hookup Rotate Hoop/Ho
	1945							Start cir f Rotate casing occasionally
								Rig pump Desso Mud - (1 HR)
								Fin cir
	1950		5 1/2					Plug RH 7 MH 20-25 SKS SMD
			12					Pump 500 gal MUD Flush
			20					Pump 90 BBI KCL Flush
								Fin flushes
		6	36 1/2					Start 100 SKS SMD cut @ 12.7 #/ft
		6	26 1/2					Start 100 SKS EA-2 cut (6.5 #/ft)
		5						@ 19.7 #/gal
								Fin cut.
								Wash out Pump & Lines
								Drop Plug. (Stop Rotate @ 50 BBI)
	2225							Start H ₂ O Displ. (109)
						650		Press back plug down
	2045		109			400		Plug down - Hold - Release H/Hell
								Job Complete
								Thanks
								Alan Josh & Ryan

CONFIDENTIAL
AUG 20 2008

RECEIVED
KANSAS CORPORATION COMMISSION
AUG 21 2008
CONSERVATION DIVISION
WICHITA, KS

Robert C. Lewellyn

Consulting Petroleum Geologist

P. O. Box 609
Kechi, KS 67067-0609
Office 316-744-2567
Cell 316-518-0495
Fax 209-396-2988
boblew5555@msn.com

GEOLOGICAL REPORT

Larson Operating Company
Ehmke No. 2-29
350' FNL & 1785' FEL Sec. 29-18S-29W
Lane County, Kansas

CONTRACTOR: H D Drilling, LLC
SPUDED: April 26, 2008
DRILLING COMPLETED: May 07, 2008
SURFACE CASING: 8 5/8" @ 272 KBM/175 sx.
ELECTRIC LOGS: Log-Tech DIL MEL CDL BHCS
ELEVATIONS: 2817 KB 2812 GL

FORMATION TOPS (Electric Log):

Anhydrite	2153 (+ 664)
Base Anhydrite	2189 (+ 628)
Heebner Shale	3914 (-1097)
Lansing-Kansas City Group	3956 (-1139)
Muncie Creek Shale	4126 (-1309)
Stark Shale	4233 (-1416)
Hushpuckney shale	4272 (-1455)
Base Kansas City	4311 (-1494)
Altamont	4363 (-1546)
Pawnee	4426 (-1609)
Myrick Station	4452 (-1635)
Fort Scott	4475 (-1658)
Cherokee	4500 (-1683)
Mississippian	4566 (-1749)
Electric Log Total Depth	4631 (-1814)

CONFIDENTIAL

AUG 20 2008

KCC

RECEIVED
KANSAS CORPORATION COMMISSION

AUG 21 2008

CONSERVATION DIVISION
WICHITA, KS

Samples were examined microscopically from 3850 to Rotary Total Depth. Samples were examined wet and dry and samples from potentially productive zones were viewed under a fluoroscope and checked for oil cut. Following is a description of zones of interest, Drill Stem Tests, etc. For a complete lithologic description of all formations, refer to the sample log in the back pages of this report.

Lansing-Kansas City Zones:

3956-3965 (A Zone)

Limestone, buff to tan, dense to finely crystalline and chalky, trace of light gray chert, zone is mostly tight with no shows of oil.

3990-3995 (B Zone)

Limestone, cream to buff, finely crystalline and chalky, partly fossiliferous, trace of scattered poor to fair intercrystalline and inter-fossil porosity, no show of oil. This zone calculates favorably on the logs, but no shows were observed in the wet or dry samples.

4008-4036 (C-D Zone)

CONFIDENTIAL

AUG 20 7 00

Limestone, cream to buff, dense to finely crystalline and chalky, scattered chert, light gray, fresh, opaque, zone is tight with no shows of oil.

KCC

4045-4048 (E Zone)

Limestone, buff to tan, some brown, trace of mottled, dense to finely crystalline and slightly fossiliferous, trace of poor intercrystalline porosity with trace of dead oil stain, rare trace of live oil stain on fracture faces in dense lime, faint fleeting odor, no free oil, no fluorescence, no cut.

4056-4064 (F Zone)

Limestone, buff, finely crystalline, partly chalky, partly fossiliferous, some scattered oolitic, zone is mostly tight with trace of scattered dead stain, no shows of live oil.

4066-4071 (G Zone)

Limestone, cream to buff, finely crystalline and oolitic, some chalky, scattered poor ooliticastic porosity, no show of oil.

4143-4151 (H Zone)

Limestone, tan to brown to mottled, slightly "resinous" appearance, finely crystalline and partly oolitic, fair intercrystalline and interoolitic porosity with scattered fair spotted stain, faint to fair odor, slight show of free oil, poor fluorescence, fair cut.

RECEIVED
KANSAS CORPORATION COMMISSION

AUG 21 2008

CONSERVATION DIVISION
WICHITA, KS

Drill Stem Test No. 1 4124-4155

Open 15 minutes, shut in 30 minutes, open 15 minutes, shut in 30 minutes; weak blow, died in six minutes. Recovered one foot of drilling mud. ISIP 721# FSIP 613# IFP 16-16# FFP 17-17# IHP 2080# FHP 1978# BHT 114 degrees.

4167-4188 (I Zone)

Limestone, broken, buff, some tan, finely crystalline and partly fossiliferous, zone is mostly tight with only a trace of very poor intercrystalline porosity, no show of oil.

4207-4217 (J Zone)

Limestone, buff to tan, coarsely oolitic, good ooliticastic porosity, scattered poor to fair spotted stain, fair show of free oil, good odor, fair fluorescence, good cut, porosity is 60% barren.

Drill Stem Test No. 2 4203-4212

Opened tool to weak blow, lost packer seat after four minutes, pulled tool. Recovered 420 feet of mud. IFP 18-26# IHP 2115# FHP 2014#

Drill Stem Test No. 3 4186-4212

Open 15 minutes, shut in 30 minutes, open 15 minutes, shut in 30 minutes; weak quarter inch blow throughout both flow periods. Recovered 60 feet of mud. ISIP 841# FSIP 843# IFP 17-33# FFP 37-51# IHP 2116# FHP 2041# BHT 117 degrees.

4244-4257 (K Zone)

Limestone, buff, some tan, finely crystalline and slightly fossiliferous, poor intercrystalline porosity with scattered poor to fair spotted stain, very slight show of free oil, faint odor, no fluorescence, no cut.

4275-4278 (Middle Creek)

Limestone, buff, finely crystalline, mostly tight, rare trace of poor spotted stain, no free oil, faint odor, no fluorescence, no cut.

4280-4286 (L Zone)

Limestone, buff, finely crystalline and fossiliferous, poor to fair intercrystalline porosity, poor to fair spotted stain, slight show of free oil, faint to fair odor, poor fluorescence, fair cut.

Drill Stem Test No. 4 4270-4288

RECEIVED
KANSAS CORPORATION COMMISSION
AUG 21 2008
CONSERVATION DIVISION
WICHITA, KS

CONFIDENTIAL

AUG 20 2008

KCC

Open 15 minutes, shut in 30 minutes, open 15 minutes, shut in 30 minutes; recovered one foot of mud. ISIP 42# FSIP 91# IFP 12-13# FFP 12-14# IHP 2115# FHP 2034# BHT 112 degrees.

4311-4336 (Pleasanton Zones)

The Pleasanton zone consisted of limestones, tan to brown, finely crystalline and slightly fossiliferous, zone mostly tight with a trace of scattered poor spotted stain, faint fleeting odor, no free oil, no fluorescence, no cut.

4336-4363 (Marmaton Zones)

This section consisted of limestones, buff, finely crystalline and slightly fossiliferous, scattered poor intercrystalline porosity, faint fleeting odor, no other oil shows, trace of tan chert, fresh, opaque.

4363-4372 (Altamont A Zone)

Limestone, cream to buff, dense to finely crystalline and chalky, zone is mostly tight with no shows of oil.

CONFIDENTIAL

AUG 2 042008 4381 (Altamont B Zone)

KOC Limestone, buff, finely crystalline and finely oolitic, fair intercrystalline and interoolitic porosity, poor to fair spotted stain, considerable dead stain along with the live stain, very slight show of free oil with scattered dead free oil (flaky, will not float, etc.), faint odor, very poor fluorescence, poor cut.

4397-4424 (Altamont C Zone)

Limestone, tan, some brown, dense, some dense oolitic with dark brown oolites, zone is mostly tight with no shows of oil.

4426-4469 (Pawnee-Myrick Station Zones)

This section consisted of limestones, cream to buff to tan, dense and chalky to finely crystalline, zone is tight with no show of oil, trace of tan, opaque chert.

4475-4500 (Fort Scott Zone)

Limestone, buff to tan to brown, finely crystalline and partly oolitic with dense-oolitic, zone is mostly tight with traces of very poor intercrystalline porosity with traces of dead stain, no live oil shows. Lower Fort Scott contains limestone, tan, oolitic with brown oolites, trace of poor to fair spotted stain, very slight show of free oil, faint fleeting odor, no fluorescence, no cut.

RECEIVED
KANSAS CORPORATION COMMISSION

AUG 21 2008

CONSERVATION DIVISION
WICHITA, KS

4529-4553 (Johnson Zone)

Limestone, brown, dense to finely crystalline, poor intercrystalline porosity, scattered poor spotted stain, trace of stain on fracture faces in dense lime, slight show of free oil, faint fleeting odor, no fluorescence, poor cut.

4566-4599 (Mississippian Zone)

Limestone, cream to buff, dense to finely crystalline and chalky, soft and flaky, zone is mostly tight with no shows of oil, considerable light gray fresh chert.

4599-4610

Dolomite, gray mottled, finely crystalline, some oolitic, scattered poor to fair intercrystalline porosity, no show of oil

4610-4630

Dolomite, cream to buff and light gray, finely crystalline, oolitic with black oolites in gray matrix. Zone is mostly tight with no shows of oil.

CONFIDENTIAL

Rotary Total Depth

AUG 20 2008

Conclusions and Recommendations:

KCC

The following zones should be perforated and production tested;

Altamont	4378-4380
J Zone	4209-4214

The "B" Zone had no samples shows but, in view of the log calculations, it should probably be perforated prior to abandonment.

Respectfully submitted,

Robert C. Lewellyn
Petroleum Geologist

RCL:me

RECEIVED
KANSAS CORPORATION COMMISSION

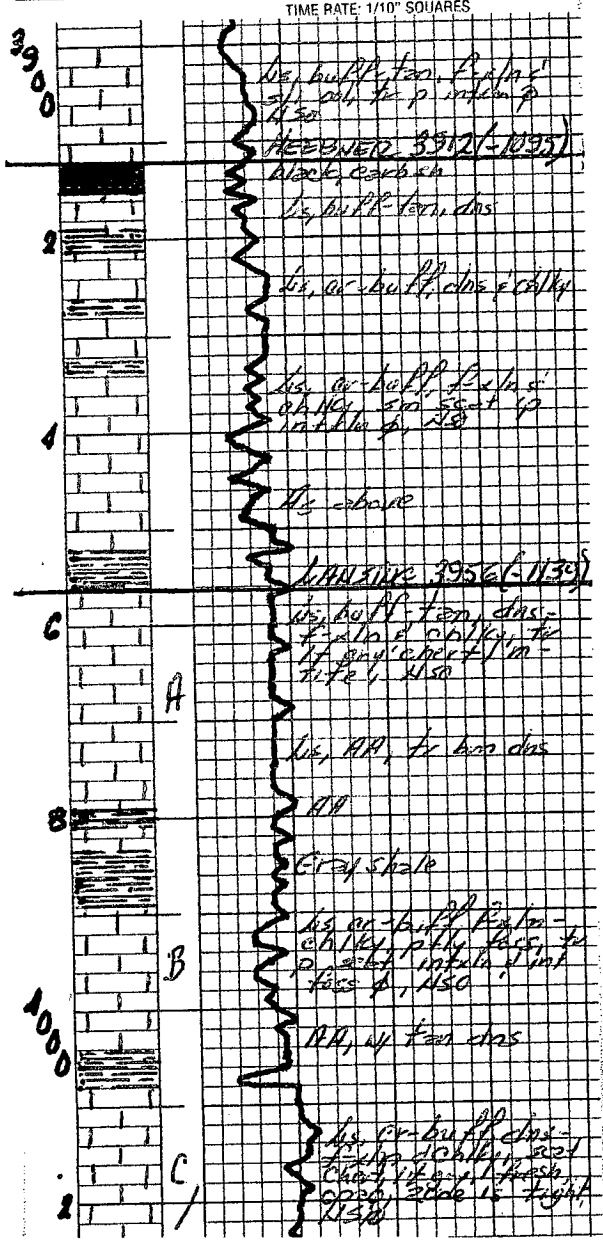
AUG 21 2008

CONSERVATION DIVISION
WICHITA, KS

STATE KANSAS	COMPANY LARSON ENGINEERING.
COUNTY LANE	FARM EHMKE
BLOCK 29	WELL NO. 2-29
SEC. 29	SURVEY 350' ENL & 1785' FEL
T. 18S	R. 29W
TOTAL DEPTH 4636	
CONTRACTOR HD Drilling, LLC	
COMMENCED 04-26-08	
COMPLETED 05-07-08	
REMARKS	
ALTIITUDE 2817 KB	
PRODUCTION Oil	
Robert C. Lowellyn, Geol	

CASING RECORD
8 5/8" @ 272 KBM / 175 ex.

SHOT QUARTS BETWEEN
 TIME RATE SCALE: 1/10" = MINUTES
Kraftbilt 450-A TULSA, OKLAHOMA 74101 PRINTED IN U.S.A.



CONFIDENTIAL
 AUG 20 2008
 KCC

RECEIVED
 KANSAS CORPORATION COMMISSION
 AUG 21 2008
 CONSERVATION DIVISION
 WICHITA, KS

CONFIDENTIAL

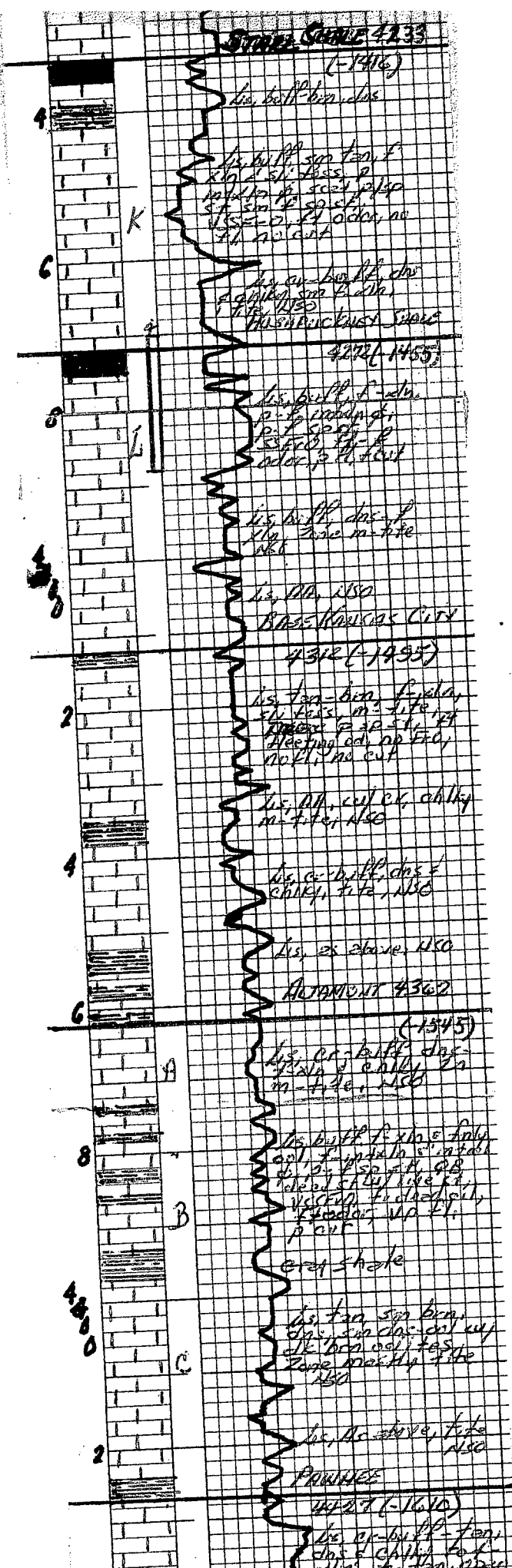
AUG 2

KCC

CONFIDENTIAL

AUG 20 2008

KCC



RECEIVED
KANSAS CORPORATION COMMISSION

AUG 21 2008

CONSERVATION DIVISION
WICHITA, KS

