

JAN 15 2005

KANSAS CORPORATION COMMISSION
ONE POINT STABILIZED OPEN FLOW OR DELIVERABILITY TEST

CONSERVATION DIVISION
WICHITA, KS

Type Test:

- Open Flow
 Deliverability

24 HR SZ

(See Instructions on Reverse Side)

Test Date: 7-15-04

API No 15-023-20555-0000

Company <i>Rosewood Resources</i>	Lease <i>Moore</i>	Well Number <i>6-28</i>
County <i>Cheyenne</i>	Location <i>2B</i>	TWP <i>2S</i>
Field <i>Cherry Creek</i>	Reservoir <i>Niobrara</i>	RNG (E/W) <i>42W</i>
Completion Date	Plug Back Total Depth	Acres Attributed <i>16.64 (2SPF)</i>
		Gas Gathering Connection
		Packer Set at

Casing Size <i>4.5"</i>	Weight <i>10.5 #</i>	Internal Diameter <i>4.052"</i>	Set at <i>1821</i>	Perforations <i>1632</i>	To <i>1664 (2SPF)</i>
Tubing Size <i>None</i>	Weight	Internal Diameter	Set at	Perforations	To

Type Completion (Describe) <i>Flowing</i>	Type Fluid Production <i>Gas</i>	Pump Unit or Traveling Plunger? Yes / No
Producing Through (Annulus / Tubing) <i>Annulus (no tbg)</i>	% Carbon Dioxide	% Nitrogen
Vertical Depth(H) <i>1827</i>	Pressure Taps	Gas Gravity - G _g <i>0.6</i>
		(Meter Run) (Prover) Size

Pressure Buildup: Shut in *4-15* 20 *04* at *8:00* (AM) (PM) Taken *7-15* 20 *04* at *8:00* (AM) (PM)

Well on Line: Started *7-15* 20 *04* at *8:00* (AM) (PM) Taken *7-18* 20 *04* at *8:00* (AM) (PM)

OBSERVED SURFACE DATA

Duration of Shut-in *2160* Hours

Static / Dynamic Property	Orifice Size (Inches)	Circle one: Meter or Prover Pressure psig (Pm)	Pressure Differential in inches H ₂ O	Flowing Temperature t	Well Head Temperature t	Casing Wellhead Pressure (P _w) or (P _c) or (P _e)		Tubing Wellhead Pressure (P _w) or (P _c) or (P _e)		Duration (Hours)	Liquid Produced (Barrels)
						psig	psia	psig	psia		
Shut-in						<i>330</i>	<i>344.4</i>				
Flow											

FLOW STREAM ATTRIBUTES

Plate Coefficient (F _o) (F _p) Mcfd	Circle one: Meter or Prover Pressure psia	Press Extension $\sqrt{P_m \times h}$	Gravity Factor F _g	Flowing Temperature Factor F _t	Deviation Factor F _{pv}	Metered Flow R (Mcfd)	GOR (Cubic Feet/ Barrel)	Flowing Fluid Gravity G _n
						<i>57</i>		<i>.6</i>

(OPEN FLOW) (DELIVERABILITY) CALCULATIONS

(P_c)² = 0.207

(P_e)² = _____ : (P_w)² = _____ : P_d = _____ % (P_c - 14.4) + 14.4 = _____ : (P_d)² = _____

(P _e) ² - (P _w) ² or (P _c) ² - (P _d) ²	(P _c) ² - (P _w) ²	Choose formula 1 or 2: 1 P _e ² - P _w ² 2 P _c ² - P _d ² divided by: P _e ² - P _w ²	LOG of formula 1 or 2 and divide by: $\frac{P_c^2 - P_w^2}{P_e^2 - P_w^2}$	Backpressure Curve Slope = "n" Assigned Standard Slope	n x LOG []	Antilog	Open Flow Deliverability Equals R x Antilog (Mcfd)

Open Flow Mcfd @ 14.65 psia Deliverability Mcfd @ 14.65 psia

The undersigned authority, on behalf of the Company, states that he is duly authorized to make the above report and that he has knowledge of the facts stated therein, and that said report is true and correct Executed this the _____ day of *January*, 20 *05*

Dennis Harris
Witness (if any)

Rosewood Resources
For Company

For Commission

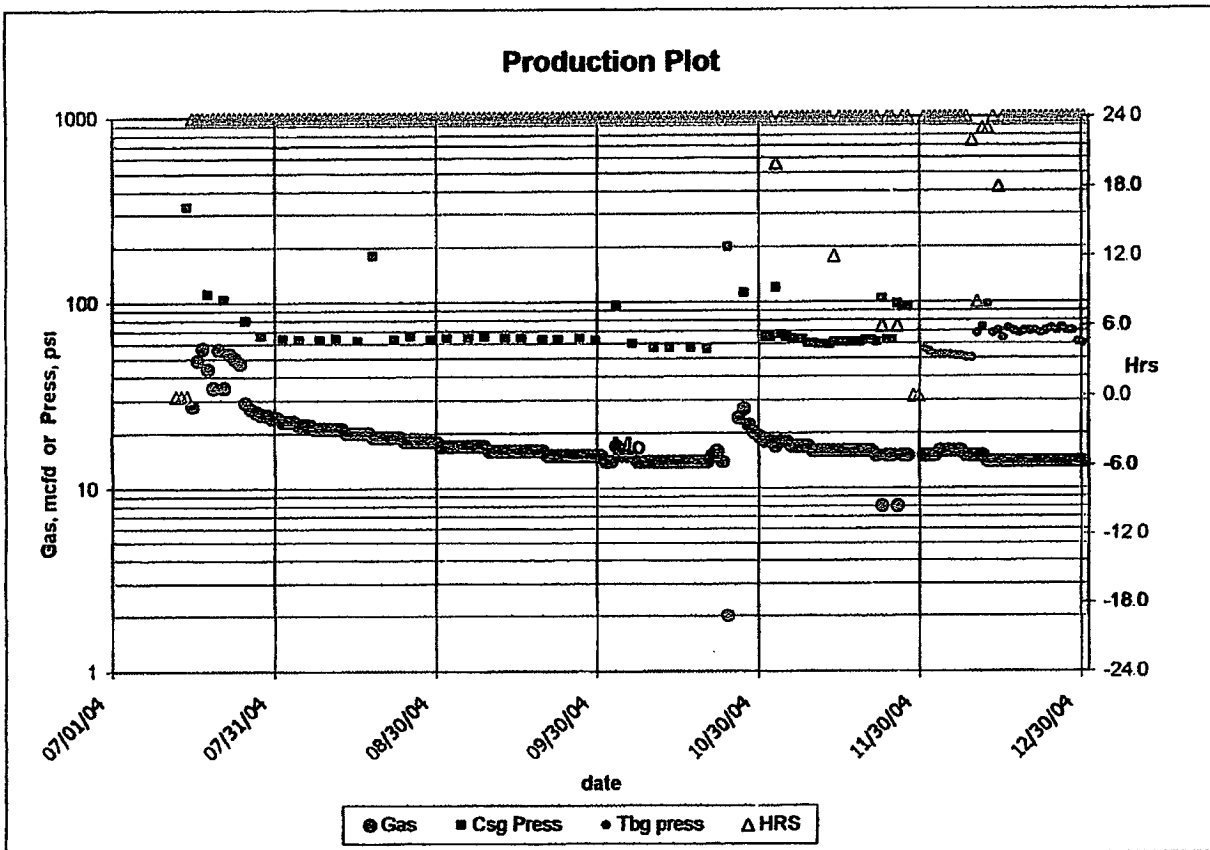
Checked by

JAN 13 2005

CONSERVATION DIVISION
WICHITA, KS

Actual
MOORE 06-28

	Gas	Csg Press	Tbg Press	Line Press	Hrs	Remarks
2004/01	null	null	null	null	null	null
2004/02	0	null	null	null	0.0	null
2004/03	0	null	null	null	0.0	null
2004/04	0	null	null	null	0.0	null
2004/05	0	null	null	null	0.0	null
2004/06	0	null	null	null	0.0	null
2004/07	610	138.2	null	94.1	24.0	null
2004/08	625	76.3	null	71.8	24.0	null
2004/09	479	63.7	null	63.9	24.0	null
2004/10	460	86.8	null	79.5	24.0	null
2004/11	440	69.0	null	65.0	22.1	null
2004/12	451	null	64.4	null	23.2	null



Actual MOORE 06-28					Hrs	Remarks
Gas	Csg	Press	Tbg	Press Line		
07/01/2004						
07/02/2004						
07/03/2004						
07/04/2004						
07/05/2004						
07/06/2004						
07/07/2004						
07/08/2004						
07/09/2004						
07/10/2004						
07/11/2004						
07/12/2004						
07/13/2004	0	null	null	null	0.0	SI WOPL
07/14/2004	0	null	null	null	0.0	SI WOPL
07/15/2004	0	330.0	null	null	0.0	SI for G-2 taken
07/16/2004	28	null	null	117.0	24.0	null
07/17/2004	49	null	null	156.0	24.0	null
07/18/2004	57	null	null	101.0	24.0	null
07/19/2004	44	111.0	null	111.0	24.0	null
07/20/2004	35	null	null	106.0	24.0	null
07/21/2004	56	null	null	103.0	24.0	null
07/22/2004	35	104.0	null	104.0	24.0	null
07/23/2004	53	null	null	99.0	24.0	null
07/24/2004	50	null	null	101.0	24.0	null
07/25/2004	47	null	null	94.0	24.0	null
07/26/2004	29	80.0	null	80.0	24.0	null
07/27/2004	27	null	null	69.0	24.0	null
07/28/2004	26	null	null	67.0	24.0	null
07/29/2004	25	66.0	null	66.0	24.0	null
07/30/2004	25	null	null	66.0	24.0	null
07/31/2004	24	null	null	65.0	24.0	null
08/01/2004	24	null	null	65.0	24.0	null
08/02/2004	23	64.0	null	64.0	24.0	null
08/03/2004	23	null	null	63.0	24.0	null
08/04/2004	23	null	null	64.0	24.0	null
08/05/2004	22	63.0	null	63.0	24.0	null
08/06/2004	22	null	null	67.0	24.0	null
08/07/2004	22	null	null	71.0	24.0	null
08/08/2004	21	null	null	64.0	24.0	null
08/09/2004	21	63.0	null	63.0	24.0	null
08/10/2004	21	null	null	171.0	24.0	null
08/11/2004	21	null	null	64.0	24.0	null
08/12/2004	21	64.0	null	64.0	24.0	null
08/13/2004	21	null	null	63.0	24.0	null
08/14/2004	20	null	null	62.0	24.0	null
08/15/2004	20	null	null	78.0	24.0	null
08/16/2004	20	62.0	null	62.0	24.0	null
08/17/2004	20	null	null	65.0	24.0	null
08/18/2004	20	null	null	65.0	24.0	null
08/19/2004	19	179.0	null	179.0	24.0	null
08/20/2004	19	null	null	66.0	24.0	null
08/21/2004	19	null	null	65.0	24.0	null
08/22/2004	19	null	null	63.0	24.0	null
08/23/2004	19	63.0	null	63.0	24.0	null

Spud 4-5-04

RECEIVED
KANSAS CORPORATION COMMISSION

JAN 13 2005

CONSERVATION DIVISION
WICHITA, KS

Actual MOORE 06-28						
	Gas	Csg Press	Tbg Press	Line Press	Hrs	Remarks
08/24/2004	19	null	null	63.0	24.0	null
08/25/2004	18	null	null	67.0	24.0	null
08/26/2004	18	66.0	null	66.0	24.0	null
08/27/2004	18	null	null	64.0	24.0	null
08/28/2004	18	null	null	63.0	24.0	null
08/29/2004	18	null	null	63.0	24.0	null
08/30/2004	18	63.0	null	63.0	24.0	null
08/31/2004	18	null	null	64.0	24.0	null
09/01/2004	17	null	null	64.0	24.0	null
09/02/2004	17	64.0	null	64.0	24.0	null
09/03/2004	17	null	null	64.0	24.0	null
09/04/2004	17	null	null	64.0	24.0	null
09/05/2004	17	null	null	64.0	24.0	null
09/06/2004	17	64.0	null	64.0	24.0	null
09/07/2004	17	null	null	66.0	24.0	null
09/08/2004	17	null	null	66.0	24.0	null
09/09/2004	17	65.0	null	65.0	24.0	null
09/10/2004	16	null	null	65.0	24.0	null
09/11/2004	16	null	null	64.0	24.0	null
09/12/2004	16	null	null	64.0	24.0	null
09/13/2004	16	64.0	null	64.0	24.0	null
09/14/2004	16	null	null	64.0	24.0	null
09/15/2004	16	null	null	64.0	24.0	null
09/16/2004	16	64.0	null	64.0	24.0	null
09/17/2004	16	null	null	64.0	24.0	null
09/18/2004	16	null	null	64.0	24.0	null
09/19/2004	16	null	null	64.0	24.0	null
09/20/2004	16	63.0	null	63.0	24.0	null
09/21/2004	15	null	null	63.0	24.0	null
09/22/2004	15	null	null	63.0	24.0	null
09/23/2004	15	63.0	null	63.0	24.0	null
09/24/2004	15	null	null	64.0	24.0	null
09/25/2004	15	null	null	64.0	24.0	null
09/26/2004	15	null	null	64.0	24.0	null
09/27/2004	15	64.0	null	64.0	24.0	null
09/28/2004	15	null	null	62.0	24.0	null
09/29/2004	15	null	null	62.0	24.0	null
09/30/2004	15	62.0	null	62.0	24.0	null
10/01/2004	15	null	null	62.0	24.0	null
10/02/2004	14	null	null	65.0	24.0	null
10/03/2004	14	null	null	127.0	24.0	null
10/04/2004	17	96.0	null	96.0	24.0	null
10/05/2004	15	null	null	60.0	24.0	null
10/06/2004	15	null	null	60.0	24.0	null
10/07/2004	15	60.0	null	60.0	24.0	null
10/08/2004	14	null	null	57.0	24.0	null
10/09/2004	14	null	null	57.0	24.0	null
10/10/2004	14	null	null	57.0	24.0	null
10/11/2004	14	57.0	null	57.0	24.0	null
10/12/2004	14	null	null	57.0	24.0	null
10/13/2004	14	null	null	57.0	24.0	null
10/14/2004	14	57.0	null	57.0	24.0	null
10/15/2004	14	null	null	57.0	24.0	null
10/16/2004	14	null	null	57.0	24.0	null

RECEIVED
KANSAS CORPORATION COMMISSION

JAN 13 2005

CONSERVATION DIVISION
WICHITA, KS

Actual MOORE 06-28					
	Gas	Csg Press	Tbg Press	Line Press	Hrs Remarks
10/17/2004	14	null	null	57.0	24.0 null
10/18/2004	14	57.0	null	57.0	24.0 null
10/19/2004	14	null	null	56.0	24.0 null
10/20/2004	14	null	null	56.0	24.0 null
10/21/2004	14	56.0	null	56.0	24.0 null
10/22/2004	15	null	null	57.0	24.0 null
10/23/2004	16	null	null	59.0	24.0 null
10/24/2004	14	null	null	101.0	24.0 null
10/25/2004	2	199.0	null	199.0	24.0 null
10/26/2004	0	null	null	213.0	24.0 null
10/27/2004	24	null	null	164.0	24.0 null
10/28/2004	27	112.0	null	112.0	24.0 null
10/29/2004	22	null	null	95.0	24.0 null
10/30/2004	20	null	null	72.0	24.0 null
10/31/2004	19	null	null	67.0	24.0 null
11/01/2004	18	65.0	null	65.0	24.0 null
11/02/2004	18	65.0	null	null	24.0 null
11/03/2004	17	119.0	null	null	20.0 null
11/04/2004	18	67.0	null	null	24.0 null
11/05/2004	18	65.0	null	null	24.0 null
11/06/2004	17	64.0	null	null	24.0 null
11/07/2004	17	63.0	null	null	24.0 null
11/08/2004	17	63.0	null	null	24.0 null
11/09/2004	17	60.0	null	null	24.0 null
11/10/2004	16	60.0	null	null	24.0 null
11/11/2004	16	59.0	null	null	24.0 null
11/12/2004	16	59.0	null	null	24.0 null
11/13/2004	16	59.0	null	null	24.0 null
11/14/2004	16	61.0	null	null	12.0 null
11/15/2004	16	61.0	null	null	24.0 null
11/16/2004	16	61.0	null	null	24.0 null
11/17/2004	16	61.0	null	null	24.0 null
11/18/2004	16	61.0	null	null	24.0 null
11/19/2004	16	61.0	null	null	24.0 null
11/20/2004	16	62.0	null	null	24.0 null
11/21/2004	16	62.0	null	null	24.0 null
11/22/2004	15	61.0	null	null	24.0 null
11/23/2004	8	104.0	null	null	6.0 null
11/24/2004	15	62.0	null	null	24.0 null
11/25/2004	15	62.0	null	null	24.0 null
11/26/2004	8	97.0	null	null	6.0 null
11/27/2004	15	94.0	null	null	24.0 null
11/28/2004	15	94.0	null	null	24.0 null
11/29/2004	null	null	null	null	null null
11/30/2004	null	null	null	null	null null
12/01/2004	15	null	56.0	null	24.0 null
12/02/2004	15	null	54.0	null	24.0 null
12/03/2004	15	null	52.0	null	24.0 null
12/04/2004	16	null	52.0	null	24.0 null
12/05/2004	16	null	52.0	null	24.0 null
12/06/2004	16	null	52.0	null	24.0 null
12/07/2004	16	null	51.0	null	24.0 null
12/08/2004	16	null	51.0	null	24.0 null
12/09/2004	15	null	50.0	null	24.0 null

RECEIVED
KANSAS CORPORATION COMMISSION

JAN 13 2005

CONSERVATION DIVISION
WICHITA, KS

Actual MOORE 06-28					
	Gas	Csg Press	Tbg Press	Line Press	Hrs Remarks
12/10/2004	15	null	50.0	null	22.0 null
12/11/2004	15	null	68.0	null	8.0 null
12/12/2004	15	null	74.0	null	23.0 null
12/13/2004	14	null	97.0	null	23.0 null
12/14/2004	14	null	68.0	null	24.0 null
12/15/2004	14	null	70.0	null	18.0 null
12/16/2004	14	null	64.0	null	24.0 null
12/17/2004	14	null	72.0	null	24.0 null
12/18/2004	14	null	70.0	null	24.0 null
12/19/2004	14	null	68.0	null	24.0 null
12/20/2004	14	null	70.0	null	24.0 null
12/21/2004	14	null	70.0	null	24.0 null
12/22/2004	14	null	70.0	null	24.0 null
12/23/2004	14	null	68.0	null	24.0 null
12/24/2004	14	null	70.0	null	24.0 null
12/25/2004	14	null	72.0	null	24.0 null
12/26/2004	14	null	70.0	null	24.0 null
12/27/2004	14	null	73.0	null	24.0 null
12/28/2004	14	null	70.0	null	24.0 null
12/29/2004	14	null	70.0	null	24.0 null
12/30/2004	14	null	61.0	null	24.0 null
12/31/2004	14	null	60.0	null	24.0 null
2004	3065	86.8	64.4	74.9	23.6 null

RECEIVED
 KANSAS CORPORATION COMMISSION
 JAN 13 2005
 CONSERVATION DIVISION
 WICHITA, KS



RECEIVED
KANSAS CORPORATION COMMISSION

JAN 13 2005

CONSERVATION DIVISION
WICHITA, KS

January 12, 2005

Mr. Jim Hemmen, Research Analyst
Kansas Corporation Commission
Oil & Gas Conservation Division
130 S. Market, Room 2078
Wichita, Kansas 67202-3802

direct: 316.337.6224
Voice: 316.337.6200
Fax: 316.337.6211
Email: www.kcc.state.ks.us

Re: G-2 Exempts : **Ella Mae #3-3, Moore #6-28, and Northrup #2-33** ✓
Cherry Creek Field
Cheyenne County, Kansas

Enclosed you will find the 2004 G-2 Exempt forms for the above cited wells. This information should now bring us into compliance **with KAR 82-3-303 and KAR 82-3-304** in the **GR&R for the Conservation of Crude Oil and Natural Gas.**

Please call me at 214-756-6621 if you have any questions about this paperwork.

Cordially,

Dennis Harris
Reservoir Engineer

Rosewood Resources, Inc.
Cityplace Center East
2711 N Haskell Ave
Suite 2800, LB #22
Dallas, Texas 75204-2944
214 756 6600
214 756 6666 (Fax)

ORIGINAL

KANSAS CORPORATION COMMISSION
OIL & GAS CONSERVATION DIVISION

COPY

RECEIVED
KANSAS CORPORATION COMMISSION
Form ACO-1
September 1999

WELL COMPLETION FORM
WELL HISTORY - DESCRIPTION OF WELL & LEASE

JAN 13 2005

Operator: License # 33019
Name: ROSEWOOD RESOURCES, INC.
Address: 2711 N. Haskell Ave., Suite 2800
City/State/Zip: Dallas, Texas
Purchaser: _____
Operator Contact Person: Stacey Owston
Phone: (970) 848-2228
Contractor: Name: Excell Drilling Company
License: 8273
Wellsite Geologist: Steven VonFeldt

Designate Type of Completion:
 New Well Re-Entry Workover
 Oil SWD SLOW Temp. Abd.
 Gas ENHR SIGW
 Dry Other (Core, WSW, Expl., Cathodic, etc)

If Workover/Re-entry: Old Well Info as follows:
Operator: _____
Well Name: _____

Original Comp. Date: _____ Original Total Depth: _____
 Deepening Re-perf. Conv. to Enhr./SWD
 Plug Back _____ Plug Back Total Depth _____
 Commingled _____ Docket No. _____
 Dual Completion _____ Docket No. _____
 Other (SWD or Enhr.?) _____ Docket No. _____

04/05/2004 04/08/2004 05/20/2004
Spud Date or Date Reached TD Completion Date or
Recompletion Date Recompletion Date

API No. 15 - 02320555-00 - ∞ CONSERVATION DIVISION
WICHITA, KS
County: Cheyenne
NE SE SW Sec. 28 Twp. 02 S. R. 42 East West
844 feet from S N (circle one) Line of Section
2156 feet from E W (circle one) Line of Section

Footages Calculated from Nearest Outside Section Corner:
(circle one) NE SE NW SW
Lease Name: R. Moore Well #: 6-28

Field Name: Cherry Creek
Producing Formation: Niobrara
Elevation: Ground: 3744' Kelly Bushing: 3750'
Total Depth: 1827' Plug Back Total Depth: 1824'

Amount of Surface Pipe Set and Cemented at 364' csg @ 370' Feet
Multiple Stage Cementing Collar Used? Yes No
If yes, show depth set _____ Feet
If Alternate II completion, cement circulated from _____
feet depth to _____ w/ _____ sx cmt.

Drilling Fluid Management Plan
(Data must be collected from the Reserve Pit)
Chloride content _____ ppm Fluid volume _____ bbls
Dewatering method used Evaporation
Location of fluid disposal if hauled offsite: _____
Operator Name: _____
Lease Name: _____ License No.: _____
Quarter _____ Sec. _____ Twp. _____ S. R. _____ East West
County: _____ Docket No.: _____

INSTRUCTIONS: An original and two copies of this form shall be filed with the Kansas Corporation Commission, 130 S. Market - Room 2078, Wichita, Kansas 67202, within 120 days of the spud date, recompletion, workover or conversion of a well. Rule 82-3-130, 82-3-106 and 82-3-107 apply. Information of side two of this form will be held confidential for a period of 12 months if requested in writing and submitted with the form (see rule 82-3-107 for confidentiality in excess of 12 months). One copy of all wireline logs and geologist well report shall be attached with this form. ALL CEMENTING TICKETS MUST BE ATTACHED. Submit CP-4 form with all plugged wells. Submit CP-111 form with all temporarily abandoned wells.

All requirements of the statutes, rules and regulations promulgated to regulate the oil and gas industry have been fully complied with and the statements herein are complete and correct to the best of my knowledge.

Signature: Stacey Owston
Title: Adm. Assistant Date: 01-12-05
Subscribed and sworn to before me this 13 day of JANUARY,
2005
Notary Public: Carolyn J. Copley
Date Commission Expires: 10-16-2008

KCC Office Use ONLY
 Letter of Confidentiality Attached
If Denied, Yes Date: _____
 Wireline Log Received
 Geologist Report Received
 UIC Distribution

Operator Name: ROSEWOOD RESOURCES, INC. Lease Name: R. Moore Well #: 6-28
 Sec. 28 Twp. 02 S. R. 42 East West County: Cheyenne

INSTRUCTIONS: Show important tops and base of formations penetrated. Detail all cores. Report all final copies of drill stems tests giving interval tested, time tool open and closed, flowing and shut-in pressures, whether shut-in pressure reached static level, hydrostatic pressures, bottom hole temperature, fluid recovery, and flow rates if gas to surface test, along with final chart(s). Attach extra sheet if more space is needed. Attach copy of all Electric Wireline Logs surveyed. Attach final geological well site report.

Drill Stem Tests Taken Yes No
 (Attach Additional Sheets)

Samples Sent to Geological Survey Yes No

Cores Taken Yes No

Electric Log Run Yes No
 (Submit Copy)

List All E. Logs Run:

Log Formation (Top), Depth and Datum Sample
 Name Top Datum
 Niobrara 1631'

RECEIVED
 KANSAS CORPORATION COMMISSION
JAN 13 2005
 CONSERVATION DIVISION
 WICHITA, KS

CASING RECORD New Used							
Report all strings set-conductor, surface, intermediate, production, etc.							
Purpose of String	Size Hole Drilled	Size Casing Set (In O.D.)	Weight Lbs. / Ft.	Setting Depth	Type of Cement	# Sacks Used	Type and Percent Additives
Surface	9 7/8"	7"	20#	370'	Neat	155	3%cc,flowseal
Production		4 1/2"	10.5#	1821'	50/50 Poz	75	10% salt,gilsonit

ADDITIONAL CEMENTING / SQUEEZE RECORD				
Purpose:	Depth Top Bottom	Type of Cement	#Sacks Used	Type and Percent Additives
<input type="checkbox"/> Perforate				
<input type="checkbox"/> Protect Casing				
<input type="checkbox"/> Plug Back TD				
<input type="checkbox"/> Plug Off Zone				

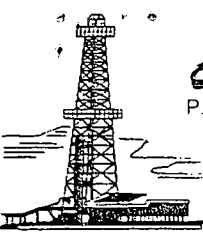
Shots Per Foot	PERFORATION RECORD - Bridge Plugs Set/Type Specify Footage of Each Interval Perforated	Acid, Fracture, Shot, Cement Squeeze Record (Amount and Kind of Material Used)	Depth
2	1632' to 1664'	Frac w/49,471 gals Mavfoam70 & 100,000#	
		16/30 brady sand & 320,000 scf N2	

TUBING RECORD		Size	Set At	Packer At	Liner Run	Yes	<input checked="" type="checkbox"/> No
None							
Date of First, Resumed Production, SWD or Enhr. 07/15/04			Producing Method				
			<input checked="" type="checkbox"/> Flowing		Pumping		Gas Lift
							Other (Explain)
Estimated Production Per 24 Hours	Oil Bbls.	Gas Mcf	Water Bbls.	Gas-Oil Ratio	Gravity		
	None	36	None				

Disposition of Gas Vented Sold Used on Lease (If vented, Submit ACO-18.)

METHOD OF COMPLETION Open Hole Perf. Dually Comp. Commingled

Production Interval Other (Specify) _____



CEMENTER'S WELL SERVICE, INC.
 P.O. BOX 336220 • GREELEY, CO 80633 • (970) 353-7299 • FAX (970) 353-7712

OUR INVOICE RECEIVED
 KANSAS CORPORATION COMMISSION

183861 JAN 13 2005

CONSERVATION DIVISION
 WICHITA, KS

Rosewood

Date 04-06-04	Well Owner Resources Inc.	Well No. 6-28	Lease Moore
Country Cheyenne	State Kansas	Field	
Charge to Excell Drilling Company	Charge Code		For Office Use Only
Address Rice # 7	City, State Upton, Colorado 80758		
Pump Truck No. 1204	Code	Bulk Truck No. 1213	Code
Type of Job	Depth	Ft. 381'	To
Surface 7" Casing	Bottom of Surface	Ft. 370'	To
Plug	Plug Landed @ 350' Ft.	Time On 02:15	
Production	Pipe Landed @ 370' Ft.	Time Off plug Down @ 03:30 AM	

Reference No.	Description	Qty.	Meas.	Unit Price	Amount
	Pump Truck Charge				
	Cement Neat ✓ 80% Exc	155	SKS		
	Poz. Mix				
	Calcium Chloride ✓	390			
	Gel % Flo-Cele 1/4 #Per Sack				
	Handling Charge				
	Hauling Charge				
	Additional Cement Top Job	50			
	7" Centralizers	1			
	" Cement Bucket	1			
	Mixing Rate 4 BBL/1 - Displacement Rate 6 BBL/1 Slurry Vol. 1.18 CU. FT/1 - Slurry WT 15.2 PPL/1				

Remarks: Refresh w/ 9 BBLs H ₂ O	Tax Reference Code	Sub Total
Displace w/ 14 BBLs H ₂ O	State 4.9%	Tax
Circulate 1 BBLs Cement	Disc.	Total

Truck No.	Code	State Mileage	Nebraska	Colorado	Wyoming	Other	Total Mileage
1204	Pump Truck			80			
1213	Bulk Truck			80			

We do not assume any responsibility for any damage or conditions resulting from our services. All pricing is subject to review and revision.

Delivered By Lean, Randy, Lucie Received By Jay Owens
 Customer or His Agent