

JAN 13 2005  
(Rev. 7/03)

KANSAS CORPORATION COMMISSION  
ONE POINT STABILIZED OPEN FLOW OR DELIVERABILITY TEST

CONSERVATION DIVISION  
WICHITA, KS

Type Test:

- Open Flow  24 in SI  
 Deliverability

(See Instructions on Reverse Side)

Test Date: 7-15-04 API No 15 ~~15-~~ 023-20535-0000

Company: Rosewood Resources Lease: Ella Mae Well Number: 3-3  
County: Cherokee Location: SE NW Section: 3 TWP: 3S RNG (E/W): 42 W Acres Attributed:  
Field: Cherry Creek Reservoir: Niobrara Gas Gathering Connection:  
Completion Date: 5-19-04 Plug Back Total Depth: 1741 Packer Set at:

Casing Size: 4.5" Weight: 10.5# Internal Diameter: 4.052" Set at: 1946' Perforations: 1548 To: 1582 (2SPR)  
Tubing Size: None Weight: Internal Diameter: Set at: Perforations: To:

Type Completion (Describe): Flowing Type Fluid Production: Gas Pump Unit or Traveling Plunger? Yes  No   
Producing Thru (Annulus / Tubing): Casing % Carbon Dioxide: % Nitrogen: Gas Gravity - G<sub>g</sub>: 0.6

Vertical Depth(H): 1759 Pressure Taps: (Meter Run) (Prover) Size:

Pressure Buildup: Shut in 4-17 20 04 at 8:00 AM (PM) Taken 7-15 20 04 at 8:00 AM (PM)  
Well on Line: Started 7-15 20 04 at 8:00 AM (PM) Taken 7-17 20 04 at 8:00 AM (PM)

OBSERVED SURFACE DATA

Duration of Shut-in 212 Hours

Static / Dynamic Property	Orifice Size (inches)	Circle one: Meter or Prover Pressure psig (Pm)	Pressure Differential in Inches H <sub>2</sub> O	Flowing Temperature t	Well Head Temperature t	Casing Wellhead Pressure (P <sub>w</sub> ) or (P <sub>1</sub> ) or (P <sub>c</sub> )		Tubing Wellhead Pressure (P <sub>w</sub> ) or (P <sub>1</sub> ) or (P <sub>c</sub> )		Duration (Hours)	Liquid Produced (Barrels)
						psig	psia	psig	psia		
Shut-in						315	329.4				
Flow											

FLOW STREAM ATTRIBUTES

Plate Coefficient (F <sub>o</sub> ) (F <sub>a</sub> ) Mcfd	Circle one: Meter or Prover Pressure psia	Press Extension $\sqrt{P_m \times h}$	Gravity Factor F <sub>g</sub>	Flowing Temperature Factor F <sub>t</sub>	Deviation Factor F <sub>pv</sub>	Metered Flow R (Mcfd)	GOR (Cubic Feet/ Barrel)	Flowing Fluid Gravity G <sub>n</sub>
						69		0.6

(OPEN FLOW) (DELIVERABILITY) CALCULATIONS

(P<sub>c</sub>)<sup>2</sup> = \_\_\_\_\_ : (P<sub>w</sub>)<sup>2</sup> = \_\_\_\_\_ : P<sub>o</sub> = \_\_\_\_\_ % (P<sub>c</sub> - 14.4) + 14.4 = \_\_\_\_\_ : (P<sub>o</sub>)<sup>2</sup> = 0.207  
(P<sub>o</sub>)<sup>2</sup> = \_\_\_\_\_

(P <sub>c</sub> ) <sup>2</sup> - (P <sub>o</sub> ) <sup>2</sup> or (P <sub>w</sub> ) <sup>2</sup> - (P <sub>o</sub> ) <sup>2</sup>	(P <sub>c</sub> ) <sup>2</sup> - (P <sub>w</sub> ) <sup>2</sup>	Choose formula 1 or 2: 1 P <sub>c</sub> <sup>2</sup> - P <sub>w</sub> <sup>2</sup> 2 P <sub>w</sub> <sup>2</sup> - P <sub>o</sub> <sup>2</sup> divided by: P <sub>c</sub> <sup>2</sup> - P <sub>w</sub> <sup>2</sup>	LOG of formula 1 or 2 and divide by: $\frac{P_c^2 - P_w^2}{P_c^2 - P_o^2}$	Backpressure Curve Slope = "n" Assigned Standard Slope	n x LOG [ ]	Antilog	Open Flow Deliverability Equals R x Antilog (Mcfd)

Open Flow Mcfd @ 14.65 psia Deliverability Mcfd @ 14.65 psia

The undersigned authority, on behalf of the Company, states that he is duly authorized to make the above report and that he has knowledge of the facts stated therein, and that said report is true and correct Executed this the \_\_\_\_\_ day of January, 20 05  
Rosewood Resources  
Witness (if any) \_\_\_\_\_ For Company

For Commission

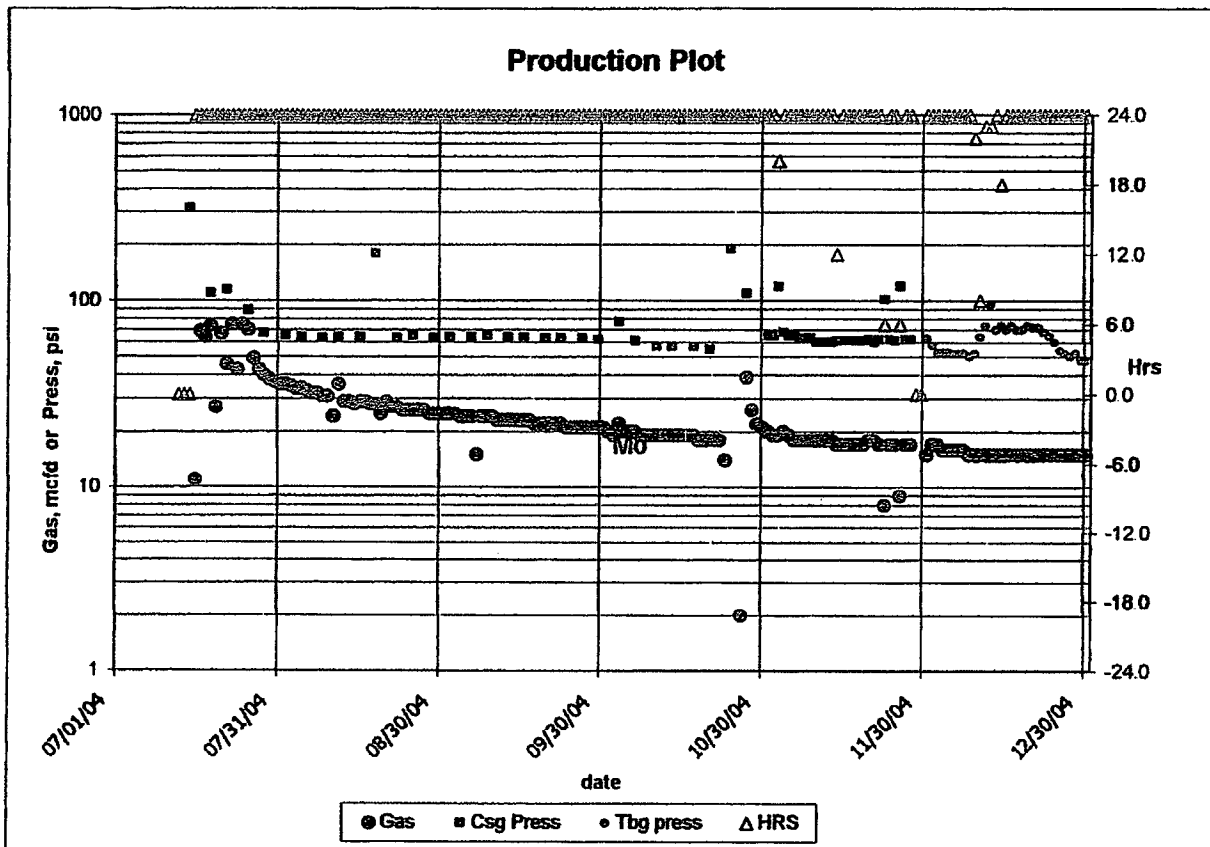
Checked by

JAN 13 2005

CONSERVATION DIVISION  
WICHITA, KS

Actual  
ELLA MAE 03-03

	Gas	Csq Press	Tbg Press	Line Press	Hrs	Remarks
2004/01	null	null	null	null	null	null
2004/02	0	null	null	null	0.0	null
2004/03	0	null	null	null	0.0	null
2004/04	0	null	null	null	0.0	null
2004/05	0	null	null	null	0.0	null
2004/06	0	null	null	null	0.0	null
2004/07	828	139.2	null	100.3	24.0	null
2004/08	907	76.7	null	71.9	24.0	null
2004/09	674	63.6	null	63.7	24.0	null
2004/10	565	83.0	null	78.4	24.0	null
2004/11	481	67.7	null	65.0	22.1	null
2004/12	474	null	61.8	null	23.2	null



*Spud 4-7-04*

Actual		ELLA MAE 03-03			Hrs	Remarks			
	Gas	Csg	Press	Tbg	Press	Line	Press		
07/13/2004	0		null		null		null	0.0	SI
07/14/2004	0		null		null		null	0.0	SI
07/15/2004	0	315.0			null		null	0.0	SI G-2 taken
07/16/2004	11		null		null		119.0	24.0	First Sales
07/17/2004	69		null		null		161.0	24.0	null
07/18/2004	64		null		null		102.0	24.0	null
07/19/2004	74	110.0			null		110.0	24.0	null
07/20/2004	27		null		null		139.0	24.0	null
07/21/2004	67		null		null		113.0	24.0	null
07/22/2004	46	115.0			null		115.0	24.0	null
07/23/2004	75		null		null		101.0	24.0	null
07/24/2004	43		null		null		121.0	24.0	null
07/25/2004	75		null		null		98.0	24.0	null
07/26/2004	70	89.0			null		89.0	24.0	null
07/27/2004	49		null		null		69.0	24.0	null
07/28/2004	43		null		null		68.0	24.0	null
07/29/2004	40	67.0			null		67.0	24.0	null
07/30/2004	38		null		null		66.0	24.0	null
07/31/2004	37		null		null		66.0	24.0	null
08/01/2004	36		null		null		65.0	24.0	null
08/02/2004	36	65.0			null		65.0	24.0	null
08/03/2004	35		null		null		65.0	24.0	null
08/04/2004	34		null		null		64.0	24.0	null
08/05/2004	34	64.0			null		64.0	24.0	null
08/06/2004	33		null		null		66.0	24.0	null
08/07/2004	32		null		null		69.0	24.0	null
08/08/2004	32		null		null		64.0	24.0	null
08/09/2004	31	63.0			null		63.0	24.0	null
08/10/2004	31		null		null		172.0	24.0	null
08/11/2004	24		null		null		65.0	24.0	null
08/12/2004	36	64.0			null		64.0	24.0	null
08/13/2004	29		null		null		63.0	24.0	null
08/14/2004	29		null		null		62.0	24.0	null
08/15/2004	28		null		null		75.0	24.0	null
08/16/2004	29	64.0			null		64.0	24.0	null
08/17/2004	29		null		null		65.0	24.0	null
08/18/2004	28		null		null		65.0	24.0	null
08/19/2004	28	179.0			null		179.0	24.0	null
08/20/2004	25		null		null		65.0	24.0	null
08/21/2004	29		null		null		68.0	24.0	null
08/22/2004	27		null		null		63.0	24.0	null
08/23/2004	27	63.0			null		63.0	24.0	null
08/24/2004	26		null		null		63.0	24.0	null
08/25/2004	26		null		null		66.0	24.0	null
08/26/2004	26	65.0			null		65.0	24.0	null
08/27/2004	26		null		null		64.0	24.0	null
08/28/2004	26		null		null		64.0	24.0	null
08/29/2004	25		null		null		63.0	24.0	null
08/30/2004	25	63.0			null		63.0	24.0	null
08/31/2004	25		null		null		64.0	24.0	null
09/01/2004	25		null		null		65.0	24.0	null
09/02/2004	25	64.0			null		64.0	24.0	null
09/03/2004	25		null		null		64.0	24.0	null
09/04/2004	24		null		null		64.0	24.0	null

RECEIVED  
KANSAS CORPORATION COMMISSION

JAN 13 2005

CONSERVATION DIVISION  
WICHITA, KS

Actual		ELLA MAE 03-03				
	Gas	Csg Press	Tbg Press	Line Press	Hrs	Remarks
09/05/2004	24	null	null	64.0	24.0	null
09/06/2004	24	64.0	null	64.0	24.0	null
09/07/2004	15	null	null	66.0	24.0	null
09/08/2004	24	null	null	65.0	24.0	null
09/09/2004	24	65.0	null	65.0	24.0	null
09/10/2004	24	null	null	65.0	24.0	null
09/11/2004	23	null	null	64.0	24.0	null
09/12/2004	23	null	null	64.0	24.0	null
09/13/2004	23	64.0	null	64.0	24.0	null
09/14/2004	23	null	null	64.0	24.0	null
09/15/2004	23	null	null	65.0	24.0	null
09/16/2004	23	64.0	null	64.0	24.0	null
09/17/2004	23	null	null	64.0	24.0	null
09/18/2004	22	null	null	64.0	24.0	null
09/19/2004	22	null	null	63.0	24.0	null
09/20/2004	22	63.0	null	63.0	24.0	null
09/21/2004	22	null	null	63.0	24.0	null
09/22/2004	22	null	null	63.0	24.0	null
09/23/2004	22	63.0	null	63.0	24.0	null
09/24/2004	21	null	null	63.0	24.0	null
09/25/2004	21	null	null	63.0	24.0	null
09/26/2004	21	null	null	63.0	24.0	null
09/27/2004	21	63.0	null	63.0	24.0	null
09/28/2004	21	null	null	62.0	24.0	null
09/29/2004	21	null	null	62.0	24.0	null
09/30/2004	21	62.0	null	62.0	24.0	null
10/01/2004	21	null	null	62.0	24.0	null
10/02/2004	20	null	null	66.0	24.0	null
10/03/2004	19	null	null	121.0	24.0	null
10/04/2004	22	77.0	null	77.0	24.0	null
10/05/2004	20	null	null	61.0	24.0	null
10/06/2004	20	null	null	61.0	24.0	null
10/07/2004	20	61.0	null	61.0	24.0	null
10/08/2004	19	null	null	57.0	24.0	null
10/09/2004	19	null	null	57.0	24.0	null
10/10/2004	19	null	null	57.0	24.0	null
10/11/2004	19	57.0	null	57.0	24.0	null
10/12/2004	19	null	null	57.0	24.0	null
10/13/2004	19	null	null	57.0	24.0	null
10/14/2004	19	57.0	null	57.0	24.0	null
10/15/2004	19	null	null	57.0	24.0	null
10/16/2004	19	null	null	57.0	24.0	null
10/17/2004	19	null	null	57.0	24.0	null
10/18/2004	19	57.0	null	57.0	24.0	null
10/19/2004	18	null	null	55.0	24.0	null
10/20/2004	18	null	null	55.0	24.0	null
10/21/2004	18	55.0	null	55.0	24.0	null
10/22/2004	18	null	null	57.0	24.0	null
10/23/2004	18	null	null	59.0	24.0	null
10/24/2004	14	null	null	102.0	24.0	null
10/25/2004	0	190.0	null	190.0	24.0	null
10/26/2004	0	null	null	213.0	24.0	null
10/27/2004	2	null	null	164.0	24.0	null
10/28/2004	39	110.0	null	110.0	24.0	null

RECEIVED  
KANSAS CORPORATION COMMISSION

JAN 13 2005

CONSERVATION DIVISION  
WICHITA, KS

Actual ELLA MAE 03-03						
	Gas	Csg Press	Tbg Press	Line Press	Hrs	Remarks
10/29/2004	26	null	null	95.0	24.0	null
10/30/2004	22	null	null	72.0	24.0	null
10/31/2004	21	null	null	66.0	24.0	null
11/01/2004	20	65.0	null	65.0	24.0	null
11/02/2004	19	65.0	null	null	24.0	null
11/03/2004	19	119.0	null	null	20.0	null
11/04/2004	20	68.0	null	null	24.0	null
11/05/2004	19	65.0	null	null	24.0	null
11/06/2004	18	65.0	null	null	24.0	null
11/07/2004	18	63.0	null	null	24.0	null
11/08/2004	18	63.0	null	null	24.0	null
11/09/2004	18	63.0	null	null	24.0	null
11/10/2004	18	60.0	null	null	24.0	null
11/11/2004	18	60.0	null	null	24.0	null
11/12/2004	18	60.0	null	null	24.0	null
11/13/2004	18	60.0	null	null	24.0	null
11/14/2004	17	61.0	null	null	12.0	null
11/15/2004	17	61.0	null	null	24.0	null
11/16/2004	17	61.0	null	null	24.0	null
11/17/2004	17	61.0	null	null	24.0	null
11/18/2004	17	61.0	null	null	24.0	null
11/19/2004	17	61.0	null	null	24.0	null
11/20/2004	18	62.0	null	null	24.0	null
11/21/2004	18	60.0	null	null	24.0	null
11/22/2004	17	62.0	null	null	24.0	null
11/23/2004	8	102.0	null	null	6.0	null
11/24/2004	17	62.0	null	null	24.0	null
11/25/2004	17	61.0	null	null	24.0	null
11/26/2004	9	120.0	null	null	6.0	null
11/27/2004	17	62.0	null	null	24.0	null
11/28/2004	17	62.0	null	null	24.0	null
11/29/2004	null	null	null	null	null	null
11/30/2004	null	null	null	null	null	null
12/01/2004	15	null	63.0	null	24.0	null
12/02/2004	17	null	58.0	null	24.0	null
12/03/2004	17	null	53.0	null	24.0	null
12/04/2004	16	null	53.0	null	24.0	null
12/05/2004	16	null	53.0	null	24.0	null
12/06/2004	16	null	52.0	null	24.0	null
12/07/2004	16	null	52.0	null	24.0	null
12/08/2004	16	null	52.0	null	24.0	null
12/09/2004	15	null	50.0	null	24.0	null
12/10/2004	15	null	52.0	null	22.0	null
12/11/2004	15	null	64.0	null	8.0	null
12/12/2004	15	null	74.0	null	23.0	null
12/13/2004	15	null	96.0	null	23.0	null
12/14/2004	15	null	70.0	null	24.0	null
12/15/2004	15	null	74.0	null	18.0	null
12/16/2004	15	null	70.0	null	24.0	null
12/17/2004	15	null	74.0	null	24.0	null
12/18/2004	15	null	70.0	null	24.0	null
12/19/2004	15	null	70.0	null	24.0	null
12/20/2004	15	null	74.0	null	24.0	null
12/21/2004	15	null	72.0	null	24.0	null

RECEIVED  
KANSAS CORPORATION COMMISSION

JAN 13 2005

CONSERVATION DIVISION  
WICHITA, KS

Actual ELLA MAE 03-03					
	Gas	Csg Press	Tbg Press	Line Press	Hrs Remarks
12/22/2004	15	null	72.0	null	24.0 null
12/23/2004	15	null	68.0	null	24.0 null
12/24/2004	15	null	65.0	null	24.0 null
12/25/2004	15	null	60.0	null	24.0 null
12/26/2004	15	null	54.0	null	24.0 null
12/27/2004	15	null	52.0	null	24.0 null
12/28/2004	15	null	50.0	null	24.0 null
12/29/2004	15	null	52.0	null	24.0 null
12/30/2004	15	null	48.0	null	24.0 null
12/31/2004	15	null	48.0	null	24.0 null
2004	3929	86.0	61.8	75.9	23.6 null

RECEIVED  
KANSAS CORPORATION COMMISSION

JAN 13 2005

CONSERVATION DIVISION  
WICHITA, KS



RECEIVED  
KANSAS CORPORATION COMMISSION

JAN 13 2005

CONSERVATION DIVISION  
WICHITA, KS

January 12, 2005

Mr. Jim Hemmen, Research Analyst  
Kansas Corporation Commission  
Oil & Gas Conservation Division  
130 S. Market, Room 2078  
Wichita, Kansas 67202-3802

direct: 316.337.6224  
Voice: 316.337.6200  
Fax: 316.337.6211  
Email: [www.kcc.state.ks.us](http://www.kcc.state.ks.us)

Re: G-2 Exempts : **Ella Mae #3-3, Moore #6-28, and Northrup #2-33**  
Cherry Creek Field  
Cheyenne County, Kansas

Enclosed you will find the 2004 G-2 Exempt forms for the above cited wells. This information should now bring us into compliance **with KAR 82-3-303 and KAR 82-3-304** in the **GR&R for the Conservation of Crude Oil and Natural Gas.**

Please call me at 214-756-6621 if you have any questions about this paperwork.

Cordially,

Dennis Harris  
Reservoir Engineer

Rosewood Resources, Inc  
Cityplace Center East  
2711 N. Haskell Ave.  
Suite 2800, LB #22  
Dallas, Texas 75204-2944  
214 756 6600  
214 756 6666 (Fax)

# ORIGINAL COPY

## WELL COMPLETION FORM

### WELL HISTORY - DESCRIPTION OF WELL & LEASE

RECEIVED  
 KANSAS CORPORATION COMMISSION  
 OIL & GAS CONSERVATION DIVISION  
 Form ACO-1  
 September 1999  
 Form Must Be Typed  
 JAN 13 2005  
 CONSERVATION DIVISION  
 WICHITA, KS

Operator: License # 33019  
 Name: ROSEWOOD RESOURCES, INC.  
 Address: 2711 N. Haskell Ave., Suite 2800  
 City/State/Zip: Dallas, Texas  
 Purchaser: \_\_\_\_\_  
 Operator Contact Person: Stacey Owston  
 Phone: (970) 848-2228  
 Contractor: Name: Excell Drilling Company  
 License: 8273  
 Wellsite Geologist: Steven VonFeldt

Designate Type of Completion:  
 New Well     Re-Entry     Workover  
 Oil     SWD     SLOW     Temp. Abd.  
 Gas     ENHR     SIGW  
 Dry     Other (Core, WSW, Expl., Cathodic, etc)

If Workover/Re-entry: Old Well Info as follows:  
 Operator: \_\_\_\_\_  
 Well Name: \_\_\_\_\_

Original Comp. Date: \_\_\_\_\_ Original Total Depth: \_\_\_\_\_  
 Deepening     Re-perf.     Conv. to Enhr./SWD  
 Plug Back     Plug Back Total Depth  
 Commingled    Docket No. \_\_\_\_\_  
 Dual Completion    Docket No. \_\_\_\_\_  
 Other (SWD or Enhr.?)    Docket No. \_\_\_\_\_

<u>04/07/2004</u>	<u>04/10/2004</u>	<u>05/15/2004</u>
Spud Date or Recompletion Date	Date Reached TD	Completion Date or Recompletion Date

API No. 15 - 02320535-00  
 County: Cheyenne  
 \_\_\_-se-\_\_\_-nw Sec. 03 Twp. 03 S. R. 42  East  West  
2315 feet from N (circle one) Line of Section  
2150 feet from W (circle one) Line of Section

Footages Calculated from Nearest Outside Section Corner:  
 (circle one) NE SE **NW** SW  
 Lease Name: Ella Mae Well #: 3-3  
 Field Name: Cherry Creek  
 Producing Formation: Niobrara  
 Elevation: Ground: 3697' Kelly Bushing: 3703'  
 Total Depth: 1759' Plug Back Total Depth: 1747'  
 Amount of Surface Pipe Set and Cemented at 302' csg @ 308 Feet  
 Multiple Stage Cementing Collar Used?  Yes  No  
 If yes, show depth set \_\_\_\_\_ Feet  
 If Alternate II completion, cement circulated from \_\_\_\_\_  
 feet depth to \_\_\_\_\_ w/ \_\_\_\_\_ sx cmt.

**Drilling Fluid Management Plan**  
 (Data must be collected from the Reserve Pit)  
 Chloride content \_\_\_\_\_ ppm Fluid volume \_\_\_\_\_ bbls  
 Dewatering method used Evaporation  
 Location of fluid disposal if hauled offsite: \_\_\_\_\_  
 Operator Name: \_\_\_\_\_  
 Lease Name: \_\_\_\_\_ License No.: \_\_\_\_\_  
 Quarter \_\_\_\_\_ Sec. \_\_\_\_\_ Twp. \_\_\_\_\_ S. R. \_\_\_\_\_ East West  
 County: \_\_\_\_\_ Docket No.: \_\_\_\_\_

**INSTRUCTIONS:** An original and two copies of this form shall be filed with the Kansas Corporation Commission, 130 S. Market - Room 2078, Wichita, Kansas 67202, within 120 days of the spud date, recompletion, workover or conversion of a well. Rule 82-3-130, 82-3-106 and 82-3-107 apply. Information of side two of this form will be held confidential for a period of 12 months if requested in writing and submitted with the form (see rule 82-3-107 for confidentiality in excess of 12 months). One copy of all wireline logs and geologist well report shall be attached with this form. ALL CEMENTING TICKETS MUST BE ATTACHED. Submit CP-4 form with all plugged wells. Submit CP-111 form with all temporarily abandoned wells.

All requirements of the statutes, rules and regulations promulgated to regulate the oil and gas industry have been fully complied with and the statements herein are complete and correct to the best of my knowledge.

Signature: Stacey Owston  
 Title: Administrative Asst. Date: 01-12-05  
 Subscribed and sworn to before me this 12 day of JANUARY  
2005  
 Notary Public: Carolyn J. Copley  
 Date Commission Expires: 10-16-2008

**KCC Office Use ONLY**

Letter of Confidentiality Attached  
 If Denied, Yes  Date: \_\_\_\_\_  
 Wireline Log Received  
 Geologist Report Received  
 UIC Distribution



Operator Name: ROSEWOOD RESOURCES, INC. Lease Name: Ella Mae Well #: 3-3  
 Sec. 03 Twp. 03 S. R. 42 East  West County: Cheyenne

**INSTRUCTIONS:** Show important tops and base of formations penetrated. Detail all cores. Report all final copies of drill stems tests giving interval tested, time tool open and closed, flowing and shut-in pressures, whether shut-in pressure reached static level, hydrostatic pressures, bottom hole temperature, fluid recovery, and flow rates if gas to surface test, along with final chart(s). Attach extra sheet if more space is needed. Attach copy of all Electric Wireline Logs surveyed. Attach final geological well site report.

Drill Stem Tests Taken <input type="checkbox"/> Yes <input checked="" type="checkbox"/> No <i>(Attach Additional Sheets)</i>  Samples Sent to Geological Survey <input type="checkbox"/> Yes <input checked="" type="checkbox"/> No  Cores Taken <input type="checkbox"/> Yes <input checked="" type="checkbox"/> No  Electric Log Run <input checked="" type="checkbox"/> Yes <input type="checkbox"/> No <i>(Submit Copy)</i>  List All E. Logs Run:	<table style="width:100%; border-collapse: collapse;"> <tr> <td style="width:30%;">Log</td> <td style="width:40%;">Formation (Top), Depth and Datum</td> <td style="width:30%;">Sample</td> </tr> <tr> <td>Name</td> <td>Top</td> <td>Datum</td> </tr> <tr> <td>Niobrara</td> <td>1549'</td> <td></td> </tr> </table> <div style="text-align: right; margin-top: 20px;"> <p><b>RECEIVED</b>                  KANSAS CORPORATION COMMISSION  <b>JAN 13 2005</b>                  CONSERVATION DIVISION                  WICHITA, KS</p> </div>	Log	Formation (Top), Depth and Datum	Sample	Name	Top	Datum	Niobrara	1549'	
Log	Formation (Top), Depth and Datum	Sample								
Name	Top	Datum								
Niobrara	1549'									

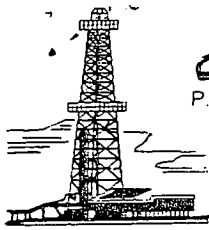
CASING RECORD							
				New	Used		
Report all strings set-conductor, surface, intermediate, production, etc.							
Purpose of String	Size Hole Drilled	Size Casing Set (In O.D.)	Weight Lbs. / Ft.	Setting Depth	Type of Cement	# Sacks Used	Type and Percent Additives
Surface	9 7/8"	7"	20#	308'	Neat	130	3%cc,flowseal
Production		4 1/2"	10.5#	1747'	50/50 Poz	75	10% salt,gilsonit

ADDITIONAL CEMENTING / SQUEEZE RECORD				
Purpose:	Depth Top Bottom	Type of Cement	#Sacks Used	Type and Percent Additives
<input type="checkbox"/> Perforate <input type="checkbox"/> Protect Casing <input type="checkbox"/> Plug Back TD <input type="checkbox"/> Plug Off Zone				

Shots Per Foot	PERFORATION RECORD - Bridge Plugs Set/Type Specify Footage of Each Interval Perforated	Acid, Fracture, Shot, Cement Squeeze Record (Amount and Kind of Material Used)	Depth
2	1548' to 1582'	Frac w/49,415 gals Mavfoam70 & 100,000#	
		16/30 brady sand & 320,000 scf N2	

TUBING RECORD		Size	Set At	Packer At	Liner Run	Yes	<input checked="" type="checkbox"/> No
None							
Date of First, Resumed Production, SWD or Enhr. 07/15/04				Producing Method <input checked="" type="checkbox"/> Flowing    Pumping    Gas Lift    Other (Explain)			
Estimated Production Per 24 Hours	Oil Bbls.	Gas Mcf	Water Bbls.	Gas-Oil Ratio	Gravity		
	None	36	None				

Disposition of Gas	METHOD OF COMPLETION	Production Interval
<input type="checkbox"/> Vented <input checked="" type="checkbox"/> Sold <input type="checkbox"/> Used on Lease <i>(If vented, Sumit ACO-18.)</i>	<input type="checkbox"/> Open Hole <input checked="" type="checkbox"/> Perf. <input type="checkbox"/> Dually Comp. <input type="checkbox"/> Commingled	<input type="checkbox"/> Other (Specify) _____



**CEMENTER'S WELL SERVICE, INC.**  
 P.O. BOX 336220 • GREELEY, CO 80633 • (970) 353-7299 • FAX (970) 353-7712

OUR INVOICE RECEIVED  
 KANSAS CORPORATION COMMISSION  
 183853  
 JAN 13 2005

CONSERVATION DIVISION  
 WICHITA, KS

Rosewood

Date 04-07-04	Well Owner Resources Inc.	Well No. 3-3	Lease Ella Mae
County Cheyenne	State Kansas	Field	
Charge to Excell Drilling Company	Charge Code		
Address Rig #2	For Office Use Only		
City, State Wray, Colorado 80758			
Pump Truck No. 12021 Code	Bulk Truck No. 1213 Code		
Type of Job	Depth	Ft. 321'	To
Surface 7" casing	Bottom of Surface	Ft. 308	To
Plug	Plug Landed @ 288	Ft. Time On 22:00	
Production	Pipe Landed @ 308	Ft. Time Off 22:30	

Reference No.	Description	Qty.	Meas.	Unit Price	Amount
	Pump Truck Charge				
	Cement Neat ✓	130	SK		
	Poz. Mix				
	Calcium Chloride ✓	39			
	Gel % Flo-Cele 1/4 #Per Sack				
	Handling Charge				
	Hauling Charge				
	Additional Cement				
	7" Centralizers	1	* No 7" Centralizer Ran		
	" Cement Basket	1			
	Mixing Rate 4 BPM - Displacement Rate 6 BPM				
	Slurry Vol 1.15 CU. FT/SK - Slurry WT 15.2 PPG.				

Remarks: Foot Lush w/ 6 BRLS H <sub>2</sub> O	Tax Reference Code	Sub Total
Discharge w/ 11 RBK H <sub>2</sub> O @ 4.9%	Disc.	Tax
Sevitate 3 BRL Cement		Total

Truck No.	Code	State Mileage	Nebraska	Colorado	Wyoming	Other Kansas	Total Mileage
12021	Pump Truck			70		5	
1213	Bulk Truck			70		5	

We do not assume any responsibility for any damage or conditions resulting from our services. All pricing is subject to review and revision.

Delivered By Leon, Randy, Lucie

Received By [Signature]

Customer or His Agent