

15-023-2022-00-00
 STATE OF KANSAS - CORPORATION COMMISSION
 ONE POINT STABILIZED OPEN FLOW OR DELIVERABILITY TEST

pg 12-1185 FORM U-2 8-7-58

TYPE TEST: Deliverability Open Flow TEST DATE: 4/18/85

COMPANY: Lockridge LEASE: Holzworth WELL NO.: 1-17

COUNTY: Cheyenne, KS LOCATION: SW 1/4 SECTION: 17 TWP: 4S RNG: 40W ACRES:

FIELD: Dent RESERVOIR: Niobrara PIPELINE CONNECTION: None

COMPLETION DATE: PLUG BACK TOTAL DEPTH: PACKER SET AT:

CASING SIZE: 4 1/2" WT.: 9.5# I.D.: SET AT: PERF.: 1263 - 1278 TO:

TUBING SIZE: None WT.: I.D.: SET AT: PERF.: TO:

TYPE COMPLETION (Describe): Single (Gas) TYPE FLUID PRODUCTION: None

PRODUCING THRU: Casing RESERVOIR TEMPERATURE: F BAR. PRESS - P_a: Est. Bar. Press. @ 12.6 Psia

GAZ GRAVITY - G_e: Calculated with .600 % CARBON DIOXIDE: % NITROGEN: API GRAVITY OF LIQUID:

VERTICAL DEPTH (ft): TYPE WATER CONN.: None (PROVER) SIZE: Tested with 2" Critical Flow Prover

SHUT-IN PRESSURE: SHUT IN: 19 AT: (AMXPM) TAKEN: 4/18 1985 AT 9:37 (AMXPM) XX
 FLOW TEST: STARTED: 4/18 1985 AT 9:45 (AMXPM) TAKEN: 4/19 1985 AT 10:15 (AMXPM) XX

OBSERVED DATA DURATION OF SHUT-IN 2 wkst

| SHUT-IN OR FLOW | ORIFICE SIZE in. | (PROVER) PRESSURE psig | DIFF. in. (h _w)(h _d) | FLOWING TEMP. t | WELL-HEAD TEMP. t | CASING WELLHEAD PRESS. | | TUBING WELLHEAD PRESS. | | DURATION HOURS | LIQUID PROD. Bbls. |
|-----------------|------------------|------------------------|--|-----------------|-------------------|------------------------|--|------------------------|--|----------------|--------------------|
| | | | | | | psig | (P _w)(P _i)(P _c) psig | psig | (P _w)(P _i)(P _c) psig | | |
| SHUT-IN | Blank | 237.5 | | | | 237.5 | 250.1 | | | | |
| FLOW | 5/16 | 190.0 | | 65° | | 190.0 | 202.6 | | | 24 1/2 | None |

RATE OF FLOW CALCULATIONS

| COEFFICIENT (F _b)(F _d) Mcfd | (PROVER) PRESSURE psia | EXTENSION $\sqrt{P_m h_w}$ | GRAVITY FACTOR F _g | FLOWING TEMP. FACTOR F _L | DEVIATION FACTOR F _{pv} | RATE OF FLOW R Mcfd | GOR | G _m |
|---|------------------------|----------------------------|-------------------------------|-------------------------------------|----------------------------------|---------------------|-----|----------------|
| 1.714 | 202.6 | | 1.291 | 0.9952 | 1.021 | 455.5 | | |

(OPEN FLOW) (DELIVERABILITY) CALCULATIONS

(P_c)² = 62.5 (P_w)² = 41.0 P_d = % (P_c - 14.4) + 14.4 = (P_w)² = 0.207 .2 (P_d)² =

| $\frac{(P_c)^2 - (P_w)^2}{(P_c)^2 - (P_d)^2}$ | $(P_c)^2 - (P_w)^2$ | $\frac{[P_c^2 - P_w^2]}{[P_c^2 - P_d^2]}$ | LOG [] | "n" | n = LOG [] | ANTILOG | OPEN FLOW DELIVERABILITY EQUALS R = ANTILOG Mcfd |
|---|---------------------|---|---------|------|-------------|---------|--|
| 62.3 | 21.5 | 2.8977 | 0.4620 | .741 | 0.3424 | 2.1998 | 1,002 |

OPEN FLOW Mcfd @ 14.65 psia DELIVERABILITY Mcfd @ 14.65 psia

The undersigned authority, on behalf of the Company, states that he is duly authorized to make the above report and that he has knowledge of the facts stated therein, and that said report is true and correct.

Executed this the 29th day of April, 1985

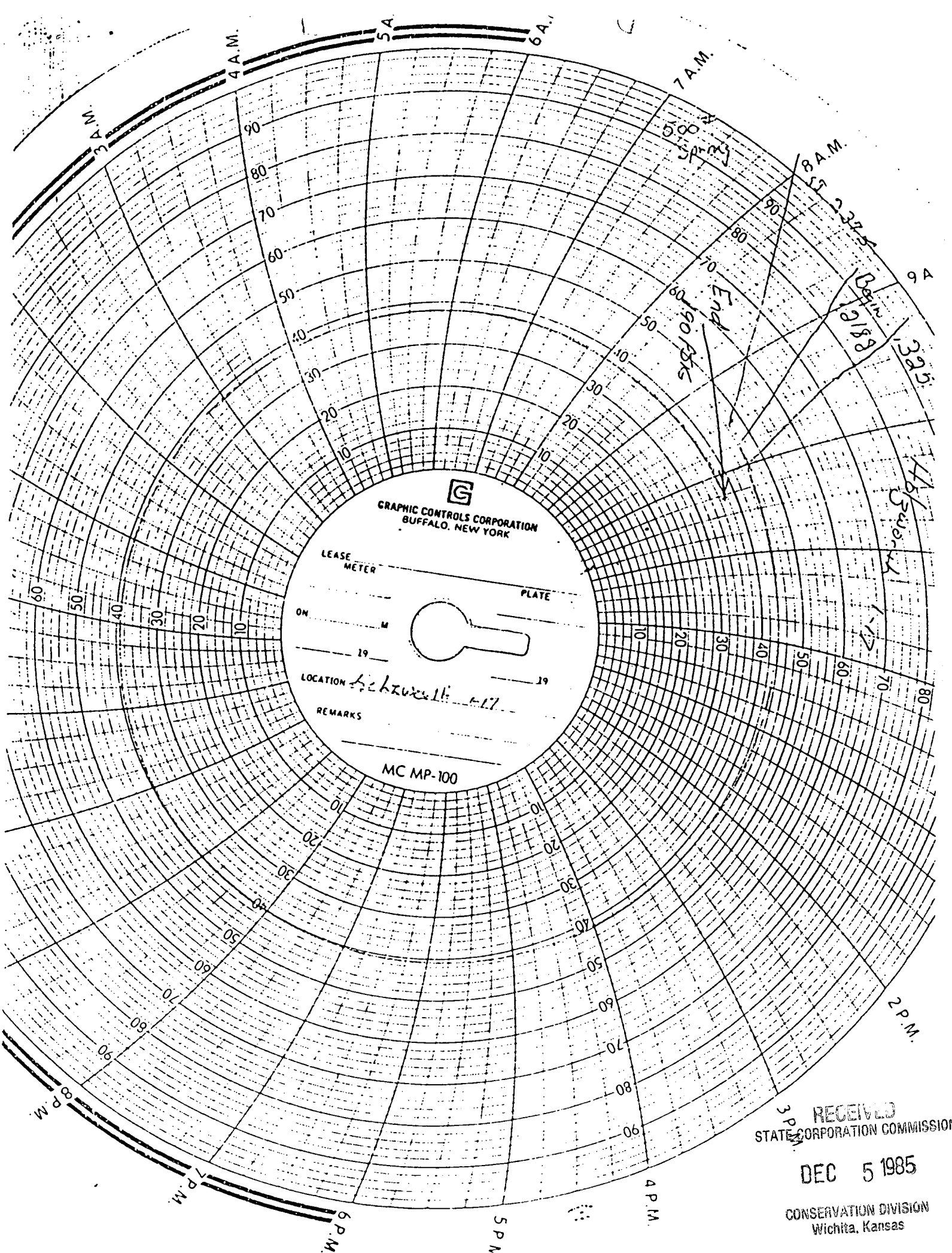
STATE CORPORATION COMMISSION

Robert Klein

For Company

DEC 5 1985

CONSERVATION DIVISION



G
GRAPHIC CONTROLS CORPORATION
BUFFALO, NEW YORK

LEASE METER

PLATE

ON _____ M _____
19 _____ 19 _____

LOCATION *Schweitzer #17*

REMARKS

MC MP-100

RECEIVED
STATE CORPORATION COMMISSION

DEC 5 1985

CONSERVATION DIVISION
Wichita, Kansas

