

KANSAS CORPORATION COMMISSION ONE POINT STABILIZED OPEN FLOW OR DELIVERABILITY TEST

Type Test:

(See Instructions on Reverse Side)

Open Flow 24 hr SI
 Deliverability

Test Date: 9-10-04

API No. 15-023-20589-0000

Company <i>Rosewood Resources</i>		Lease <i>Zimbelman</i>			Well Number <i>3-24</i>	
County <i>Cheyenne</i>	Location <i>SW NW</i>	Section <i>24</i>	TWP <i>3S</i>	RNG (E/W) <i>41 W</i>	Acres Attributed <i>80</i>	
Field <i>Cherry Creek</i>		Reservoir <i>Niobrara</i>	Gas Gathering Connection <i>B.S.I.</i>			
Completion Date <i>9-2-04</i>		Plug Back Total Depth <i>1502</i>		Packer Set at		
Casing Size <i>4-1/2</i>	Weight <i>10.5</i>	Internal Diameter <i>4.052"</i>	Set at <i>1507</i>	Perforations <i>1292</i>	To <i>1330</i>	
Tubing Size	Weight	Internal Diameter	Set at	Perforations	To	

Type Completion (Describe) <i>Flowing Single (vertical) Gas</i>	Type Fluid Production <i>Gas</i>	Pump Unit or Traveling Plunger? Yes / No <i>Flowing</i> / <input checked="" type="radio"/> No
Producing Thru (Annulus) Tubing <i>Annulus</i>	% Carbon Dioxide	% Nitrogen
Vertical Depth (H) <i>1536</i>	Pressure Taps <i>FLANGE</i>	Gas Gravity - G <i>0.64</i>
		(Meter Run) (Prover) Size <i>(2")</i>
Pressure Buildup: Shut in <i>9/9</i> 20 <i>04</i> at <i>7</i> (AM) (PM) Taken <i>9-10</i> 20 <i>04</i> at <i>7</i> (AM) (PM)		
Well on Line: Started <i>9/10</i> 20 <i>04</i> at <i>7</i> (AM) (PM) Taken <i>9-13</i> 20 <i>04</i> at <i>7</i> (AM) (PM)		

OBSERVED SURFACE DATA

Duration of Shut-in *24* Hours

Static / Dynamic Property	Orifice Size (inches)	Circle one: Meter Prover Pressure psig (Pm)	Pressure Differential in Inches H ₂ O	Flowing Temperature t	Well Head Temperature t	Casing Wellhead Pressure (P _w) or (P _t) or (P _c)		Tubing Wellhead Pressure (P _w) or (P _t) or (P _c)		Duration (Hours)	Liquid Produced (Barrels)
						psig	psia	psig	psia		
Shut-In						<i>234</i>	<i>248.4</i>				
Flow						<i>222</i>	<i>236.4</i>			<i>24</i>	

FLOW STREAM ATTRIBUTES

Plate Coefficient (F _p) (F _a) Mcfd	Circle one: Meter or Prover Pressure psia	Press Extension $\sqrt{P_m \times h}$	Gravity Factor F _g	Flowing Temperature Factor F _t	Deviation Factor F _{pv}	Metered Flow R (Mcfd)	GOR (Cubic Feet/ Barrel)	Flowing Fluid Gravity G _m
						<i>83</i>		

(OPEN FLOW) (DELIVERABILITY) CALCULATIONS

$(P_c)^2 =$ _____ : $(P_w)^2 =$ _____ : $P_d =$ _____ % $(P_c - 14.4) + 14.4 =$ _____ : $(P_a)^2 = 0.207$
 $(P_c)^2 =$ _____ : $(P_w)^2 =$ _____ :

$(P_c)^2 - (P_a)^2$ or $(P_c)^2 - (P_d)^2$	$(P_c)^2 - (P_w)^2$	Choose formula 1 or 2: 1. $P_c^2 - P_d^2$ 2. $P_c^2 - P_w^2$ divided by: $P_c^2 - P_w^2$	LOG of formula 1. or 2. and divide by: $P_c^2 - P_w^2$	Backpressure Curve Slope = "n" ----- or ----- Assigned Standard Slope	n x LOG []	RECEIVED Antilog JAN 24 2005 KCC WICHITA	Open Flow Deliverability Equals R x Antilog (Mcfd)

Open Flow Mcfd @ 14.65 psia Deliverability Mcfd @ 14.65 psia

The undersigned authority, on behalf of the Company, states that he is duly authorized to make the above report and that he has knowledge of the facts stated therein, and that said report is true and correct. Executed this the 14 day of January, 2005.

Witness (if any)

For Company

For Commission

Checked by

I declare under penalty of perjury under the laws of the state of Kansas that I am authorized to request exempt status under Rule K.A.R. 82-3-304 on behalf of the operator Rosewood Resource
Zimbelman 3
and that the foregoing pressure information and statements contained on this application form are true and correct to the best of my knowledge and belief based upon available production summaries and lease records of equipment installation and/or upon type of completion or upon use being made of the gas well herein named.

I hereby request a one-year exemption from open flow testing for the Zimbelman 3-24
gas well on the grounds that said well:

(Check one)

- is a coalbed methane producer
- is cycled on plunger lift due to water
- is a source of natural gas for injection into an oil reservoir undergoing ER
- is on vacuum at the present time; KCC approval Docket No. _____
- is not capable of producing at a daily rate in excess of 250 mcf/D

I further agree to supply to the best of my ability any and all supporting documents deemed by Commission staff as necessary to corroborate this claim for exemption from testing.

Date: 1/14/05

Signature: [Handwritten Signature]
Title: Reservoir Eng

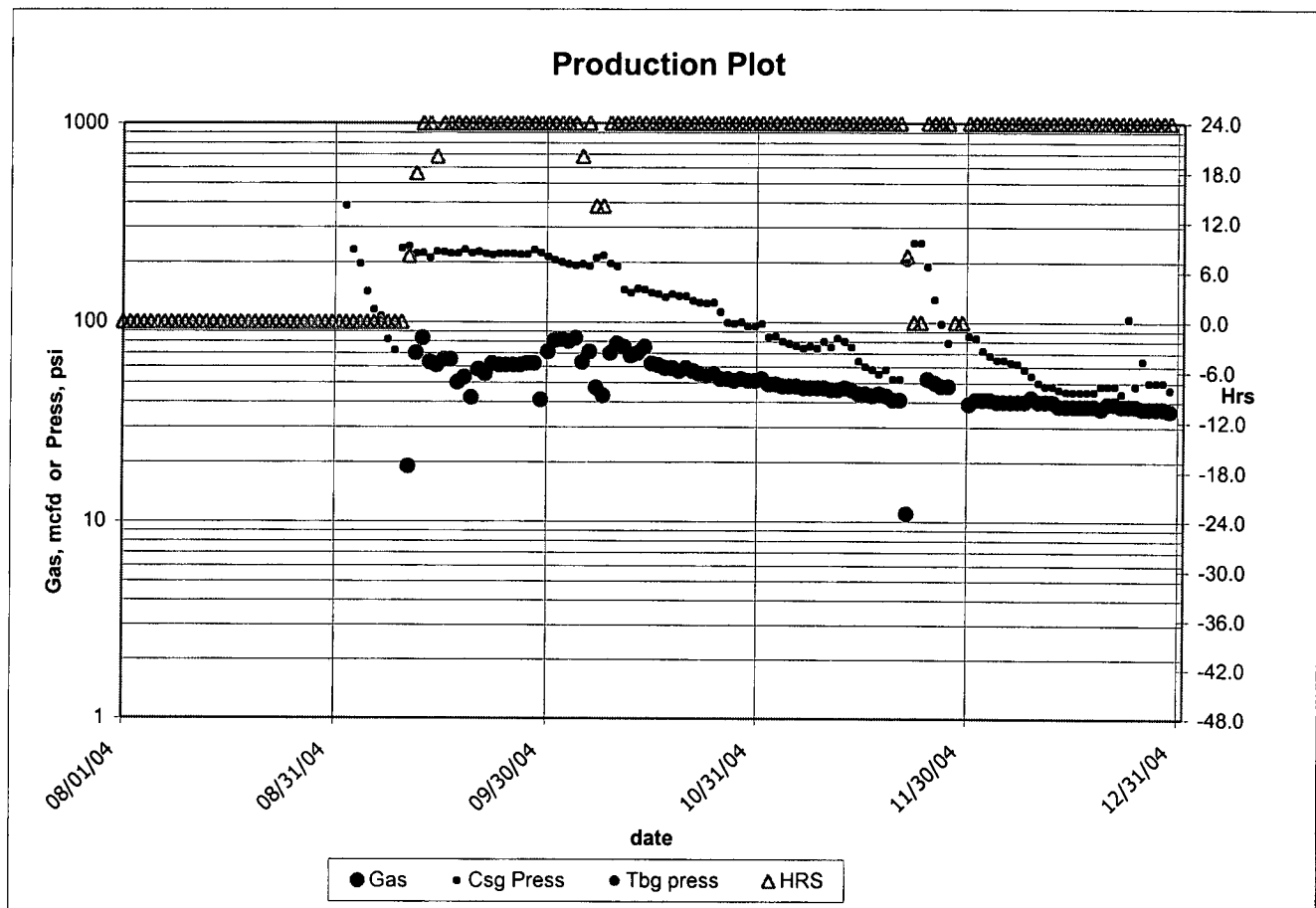
Instructions: If a gas well meets one of the eligibility criteria set out in KCC regulation K.A.R. 82-3-304, the operator may complete the statement provided above in order to claim exempt status for the gas well.

At some point during the current calendar year, wellhead shut-in pressure shall have been measured after a minimum of 24 hours shut-in/buildup time and shall be reported on the front side of this form under **OBSERVED SURFACE DATA**. Shut-in pressure shall thereafter be reported yearly in the same manner for so long as the gas well continues to meet the eligibility criterion or until the claim of eligibility for exemption IS denied.

The G-2 form conveying the newest shut-in pressure reading shall be filed with the Wichita office no later than December 31 of the year for which it's intended to acquire exempt status for the subject well. The form must be signed and dated on the front side as though it was a verified report of annual test results.

Actual
ZIMBELMAN 03-24

	<u>Gas</u>	<u>Csg Press</u>	<u>Tbg Press</u>	<u>Line Press</u>	<u>Hrs</u>	<u>Remarks</u>
2004/01	null	null	null	null	null	null
2004/02	null	null	null	null	null	null
2004/03	null	null	null	null	null	null
2004/04	null	null	null	null	null	null
2004/05	null	null	null	null	null	null
2004/06	null	null	null	null	null	null
2004/07	null	null	null	null	null	null
2004/08	null	null	null	null	null	null
2004/09	1155	222.6	null	null	22.7	null
2004/10	1944	151.5	null	null	23.2	null
2004/11	1176	96.9	null	null	23.4	null
2004/12	1201	56.1	null	null	24.0	null
TOTAL	5476	131.8			23.3	



RECEIVED
JAN 24 2005
KCC WICHITA

Actual ZIMBELMAN 03-24					
	Gas	Csg Press	Tbg Press	Line Press	Hrs Remarks
10/31/2004	51	95.0	null	null	24.0
11/01/2004	52	98.0	null	null	24.0
11/02/2004	49	84.0	null	null	24.0
11/03/2004	49	85.0	null	null	24.0
11/04/2004	48	80.0	null	null	24.0
11/05/2004	48	78.0	null	null	24.0
11/06/2004	48	76.0	null	null	24.0
11/07/2004	47	74.0	null	null	24.0
11/08/2004	47	76.0	null	null	24.0
11/09/2004	47	74.0	null	null	24.0
11/10/2004	47	80.0	null	null	24.0
11/11/2004	46	75.0	null	null	24.0
11/12/2004	46	83.0	null	null	24.0
11/13/2004	47	80.0	null	null	24.0
11/14/2004	46	75.0	null	null	24.0
11/15/2004	44	64.0	null	null	24.0
11/16/2004	44	60.0	null	null	24.0
11/17/2004	43	58.0	null	null	24.0
11/18/2004	44	55.0	null	null	24.0
11/19/2004	43	58.0	null	null	24.0
11/20/2004	41	52.0	null	null	24.0
11/21/2004	41	52.0	null	null	24.0
11/22/2004	11	200.0	null	null	8.0 SI 3:00 pm
11/23/2004	0	250.0	null	null	0.0 SI
11/24/2004	0	250.0	null	null	0.0 SI 64 hrs
11/25/2004	52	190.0	null	null	24.0
11/26/2004	50	130.0	null	null	24.0
11/27/2004	48	98.0	null	null	24.0
11/28/2004	48	79.0	null	null	24.0
11/29/2004	null	null	null	null	null SI
11/30/2004	null	null	null	null	null SI
12/01/2004	39	85.0	null	null	24.0
12/02/2004	41	83.0	null	null	24.0
12/03/2004	41	72.0	null	null	24.0
12/04/2004	41	68.0	null	null	24.0
12/05/2004	40	65.0	null	null	24.0
12/06/2004	40	65.0	null	null	24.0
12/07/2004	40	63.0	null	null	24.0
12/08/2004	40	62.0	null	null	24.0
12/09/2004	40	58.0	null	null	24.0
12/10/2004	42	54.0	null	null	24.0
12/11/2004	40	50.0	null	null	24.0
12/12/2004	40	48.0	null	null	24.0
12/13/2004	40	48.0	null	null	24.0
12/14/2004	38	46.0	null	null	24.0
12/15/2004	38	45.0	null	null	24.0
12/16/2004	38	45.0	null	null	24.0
12/17/2004	38	45.0	null	null	24.0
12/18/2004	38	45.0	null	null	24.0
12/19/2004	38	45.0	null	null	24.0
12/20/2004	37	48.0	null	null	24.0
12/21/2004	39	48.0	null	null	24.0
12/22/2004	39	48.0	null	null	24.0
12/23/2004	38	44.0	null	null	24.0
12/24/2004	38	104.0	null	null	24.0
12/25/2004	38	48.0	null	null	24.0
12/26/2004	37	64.0	null	null	24.0
12/27/2004	37	50.0	null	null	24.0
12/28/2004	37	50.0	null	null	24.0
12/29/2004	37	50.0	null	null	24.0
12/30/2004	36	46.0	null	null	24.0
12/31/2004	36	46.0	null	null	24.0
2004	5476	131.8	null	null	23.3

RECEIVED
JAN 24 2005
KCC WICHITA

Actual

ZIMBELMAN 03-24

	Gas Csg Press	Tbg Press	Line Press	Hrs	Remarks
08/18/2004	null	null	null	null	SPUD
08/19/2004	null	null	null	null	TD 1536
08/20/2004	null	null	null	null	Csg set 1507
08/21/2004	null	null	null	null	SI WOCT
08/22/2004	null	null	null	null	SI WOCT
08/23/2004	null	null	null	null	SI WOCT
08/24/2004	null	null	null	null	SI WOCT
08/25/2004	null	null	null	null	SI WOCT
08/26/2004	null	null	null	null	SI WOCT
08/27/2004	null	null	null	null	SI WOCT
08/28/2004	null	null	null	null	SI WOCT
08/29/2004	null	null	null	null	PBSD 1502
08/30/2004	null	null	null	null	PERF 1292-1330 w/2spf
08/31/2004	null	null	null	null	SI WOFU
09/01/2004	0	null	null	null	0.0 SI WOFU
09/02/2004	0	384.0	null	null	0.0 FRAC 100K# & SICP
09/03/2004	0	230.0	null	null	0.0 Chk 18//64 flo G&W to pits
09/04/2004	0	196.0	null	null	0.0 Chk 24//64 flo G&W to pits
09/05/2004	0	142.0	null	null	0.0 Chk 24//64 flo G&W to pits
09/06/2004	0	115.0	null	null	0.0 Chk 24//64 flo G&W to pits
09/07/2004	0	107.0	null	null	0.0 Chk 24//64 flo G&W to pits
09/08/2004	0	82.0	null	null	0.0 Chk 24//64 flo G&W to pits
09/09/2004	0	72.0	null	null	0.0 Chk 24//64 flo G&W & SI
09/10/2004	0	234.0	null	null	0.0 SI G-2 & on line
09/11/2004	19	240.0	null	null	8.0 sales
09/12/2004	70	220.0	null	null	18.0
09/13/2004	83	222.0	null	null	24.0
09/14/2004	63	210.0	null	null	24.0
09/15/2004	61	225.0	null	null	20.0
09/16/2004	65	224.0	null	null	24.0
09/17/2004	65	220.0	null	null	24.0
09/18/2004	50	220.0	null	null	24.0
09/19/2004	53	230.0	null	null	24.0
09/20/2004	42	221.0	null	null	24.0
09/21/2004	58	225.0	null	null	24.0
09/22/2004	55	220.0	null	null	24.0
09/23/2004	62	217.0	null	null	24.0
09/24/2004	61	220.0	null	null	24.0
09/25/2004	61	220.0	null	null	24.0
09/26/2004	61	220.0	null	null	24.0
09/27/2004	61	218.0	null	null	24.0
09/28/2004	62	218.0	null	null	24.0
09/29/2004	62	229.0	null	null	24.0
09/30/2004	41	222.0	null	null	24.0
10/01/2004	71	212.0	null	null	24.0
10/02/2004	81	204.0	null	null	24.0
10/03/2004	82	200.0	null	null	24.0
10/04/2004	80	195.0	null	null	24.0
10/05/2004	83	192.0	null	null	24.0
10/06/2004	63	195.0	null	null	20.0
10/07/2004	71	190.0	null	null	24.0
10/08/2004	47	210.0	null	null	14.0
10/09/2004	43	215.0	null	null	14.0
10/10/2004	70	197.0	null	null	24.0
10/11/2004	78	190.0	null	null	24.0
10/12/2004	75	145.0	null	null	24.0
10/13/2004	68	140.0	null	null	24.0
10/14/2004	70	147.0	null	null	24.0
10/15/2004	75	145.0	null	null	24.0
10/16/2004	62	140.0	null	null	24.0
10/17/2004	61	138.0	null	null	24.0
10/18/2004	59	133.0	null	null	24.0
10/19/2004	59	138.0	null	null	24.0
10/20/2004	57	135.0	null	null	24.0
10/21/2004	59	135.0	null	null	24.0
10/22/2004	57	128.0	null	null	24.0
10/23/2004	55	125.0	null	null	24.0
10/24/2004	54	124.0	null	null	24.0
10/25/2004	55	125.0	null	null	24.0
10/26/2004	52	112.0	null	null	24.0
10/27/2004	52	99.0	null	null	24.0
10/28/2004	51	98.0	null	null	24.0
10/29/2004	52	100.0	null	null	24.0
10/30/2004	51	95.0	null	null	24.0