

15-023-20241-00-00  
**STATE OF KANSAS - CORPORATION COMMISSION**  
**ONE POINT STABILIZED OPEN FLOW OR DELIVERABILITY TEST**

FORM G-2  
8-7-58

**TYPE TEST:**  Deliverability  Open Flow      **TEST DATE:** 2/25/86

---

**COMPANY:** FMP Operating Co.      **LEASE:** Zweggardt      **WELL NO.:** 2-32

---

**COUNTY:** Cheyenne      **LOCATION:** SESE 1/4      **SECTION:** 32      **TWP:** 3S      **RNG:** 41W      **ACRES:**

---

**FIELD:** Rueb      **RESERVOIR:** Niobrara      **PIPELINE CONNECTION:** None

---

**COMPLETION DATE:** 2/26/86      **PLUG BACK TOTAL DEPTH:**      **PACKER SET AT:**

---

**CASINO SIZE:** 4 1/2"      **WT.:** 9.5#      **I.D.:**      **SET AT:** 1516'      **PERF.:** 1340'      **TO:** 1378'

---

**TUBING SIZE:** None      **WT.:**      **I.D.:**      **SET AT:**      **PERF.:**      **TO:**

---

**TYPE COMPLETION (Describe):** Single (Gas)      **TYPE FLUID PRODUCTION:** None

---

**PRODUCING THRU:** Casing      **RESERVOIR TEMPERATURE F:**      **BAR. PRESS - P<sub>a</sub>:** Est. Bar. Press. @ 12.6 Psia

---

**GAS GRAVITY - G<sub>g</sub>:** Calculated with .594 (Actual)      **% CARBON DIOXIDE:**      **% NITROGEN:**      **API GRAVITY OF LIQUID:**

---

**VERTICAL DEPTH (H):**      **TYPE METER CONN.:** None      **ORIFICE (PROVER) SIZE:** Tested with 2" Critical Flow Prover

---

**SHUT-IN PRESSURE:** SHUT IN \_\_\_\_\_ 19\_\_\_\_ AT \_\_\_\_\_ (AM)(PM) TAKEN 2/25 19 86 AT 1:45 (AM)(PM)

**FLOW TEST:** STARTED 2/25 19 86 AT 2:00 (AM)(PM) TAKEN 2/26 19 86 AT 2:00 (AM)(PM)

**OBSERVED DATA**

DURATION OF SHUT-IN 2 wks+

SHUT-IN OR FLOW	ORIFICE SIZE In.	(PROVER) PRESSURE psig	DIFF. In. (h <sub>w</sub> )(h <sub>d</sub> )	FLOWING TEMP. t	WELL-HEAD TEMP. t	CASINO WELL-HEAD PRESS.		TUBING WELL-HEAD PRESS.		DURATION HOURS	LIQUID PROD. Bbls.
						psig	(P <sub>w</sub> )(P <sub>i</sub> )(P <sub>c</sub> ) psia	psig	(P <sub>w</sub> )(P <sub>i</sub> )(P <sub>c</sub> ) psia		
SHUT-IN	Blank	272.2				272.2	284.8				
FLOW	3/8"	206.5		64°		206.5	219.1			24	None

**RATE OF FLOW CALCULATIONS**

COEFFICIENT (F <sub>b</sub> )(F <sub>d</sub> ) Mcfd	(PROVER) PRESSURE psia	EXTENSION √P <sub>m</sub> h <sub>w</sub>	GRAVITY FACTOR F <sub>g</sub>	FLOWING TEMP. F <sub>L</sub>	DEVIATION FACTOR F <sub>pv</sub>	RATE OF FLOW R Mcfd	GOR	G <sub>m</sub>
2.439	219.1		1.298	.9962	1.019	704.1		

**(OPEN FLOW) (DELIVERABILITY) CALCULATIONS**

(P<sub>c</sub>)<sup>2</sup> = 81.1      (P<sub>w</sub>)<sup>2</sup> = 48.0      P<sub>d</sub><sup>2</sup> = \_\_\_\_\_ %      (P<sub>c</sub> - 14.4) + 14.4 = \_\_\_\_\_      (P<sub>w</sub>)<sup>2</sup> = 0.207      (P<sub>d</sub>)<sup>2</sup> = .2

(P <sub>c</sub> ) <sup>2</sup> - (P <sub>a</sub> ) <sup>2</sup> (P <sub>c</sub> ) <sup>2</sup> - (P <sub>d</sub> ) <sup>2</sup>	(P <sub>c</sub> ) <sup>2</sup> - (P <sub>w</sub> ) <sup>2</sup>	$\frac{P_c^2 - P_a^2}{P_c^2 - P_d^2}$ $\frac{P_c^2 - P_d^2}{P_c^2 - P_w^2}$	LOG [ ]	"n"	n x LOG [ ]	ANTILOG	OPEN FLOW DELIVERABILITY EQUALS R x ANTILOG Mcfd
80.9	33.1	2.4441	.3881	.723 *	.2806	1.9081	1343.5

**OPEN FLOW** 1344 Mcfd @ 14.65 psia      **DELIVERABILITY** Mcfd @ 14.65 psia

The undersigned authority on behalf of the Company, states that he is duly authorized to make the above report and that he has knowledge of the facts stated therein, and that said report is true and correct.

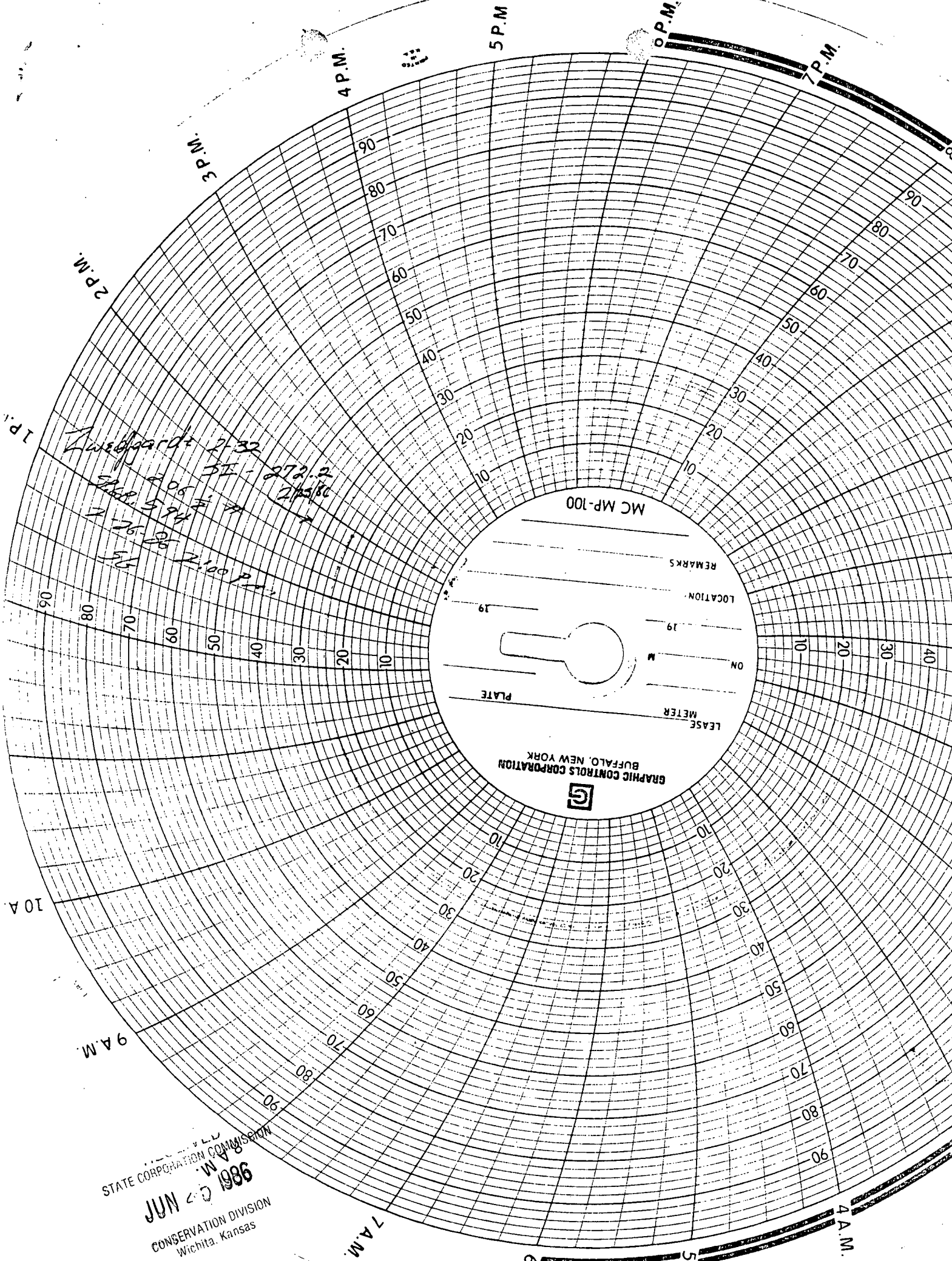
Executed this the \_\_\_\_\_ day of February, 19 86.

\* Taken from Zweggardt 1-32 Stan Holmes  
Well test For Company

Witness (if any)

For Commission

Checked by



STATE CORPORATION COMMISSION  
 JUN 27 1986  
 CONSERVATION DIVISION  
 Wichita, Kansas

MC MP-100

REMARKS

LOCATION

ON

LEASE METER

PLATE

GRAPHIC CONTROLS CORPORATION  
 BUFFALO, NEW YORK

Lusegardt 2-32  
 205  
 272.2  
 2/2/80  
 594  
 26.80  
 2:00 P.M.