

TYPE

# NOTICE OF INTENTION TO DRILL

C-1

**TO BE FILED WITH THE STATE CORPORATION COMMISSION  
PRIOR TO COMMENCEMENT OF WELL**

1. Operator H & H Production, Inc.  
Address Box 348, Russell, KS 67665
2. Contractor Emphasis Oil Operations  
Address Box 506, Russell, KS 67665
3. Type of Equipment: Rotary X Cable Tool \_\_\_\_\_
4. Well to be Drilled for: Oil X Gas \_\_\_\_\_  
Disposal \_\_\_\_\_ Input \_\_\_\_\_ Other \_\_\_\_\_
5. Depth of Deepest Fresh Water within 1 mile 60 ft.
6. Depth of Municipal Water Well within 3 miles None ft.
7. Depth to Protect all Fresh Water 100 ft.
8. Amount of Surface Casing to be set 250 ft.
9. Alternate No. 1 \_\_\_\_\_ No. 2 X \_\_\_\_\_

API Number 15-167-2116-00-00  
(For office use only)

Starting Date December 9, 1977

County Russell

Sec 35 Twp 13 S Rge 14  W

Spot Location SE NE NW

Nearest Lease Line \_\_\_\_\_ 330 ft.

Lease Name Murphy

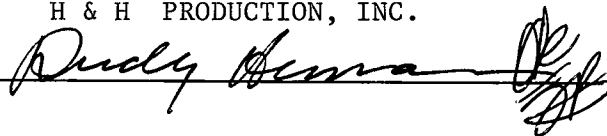
Well No. 1

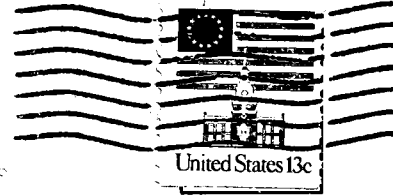
Est. Total Depth \_\_\_\_\_ 3350 ft.

REMARKS:

**OPERATOR STATES THAT HE WILL COMPLY WITH K. S. A. 55-128  
H & H PRODUCTION, INC.**

Signature of Operator By, Dudley Hanna





**State Corporation Commission of Kansas  
Conservation Division  
245 North Water  
Wichita, Kansas 67202**

**RECEIVED  
STATE CORPORATION COMMISSION**

**NOV 28 1977  
11-28-1977  
CONSERVATION DIVISION  
Wichita, Kansas**

**(IF PREFERRED, MAIL IN ENVELOPE)**