

KANSAS CORPORATION COMMISSION

ONE POINT STABILIZED OPEN FLOW OR DELIVERABILITY TEST

RECEIVED

JAN 24 2005

Type Test:

- Open Flow 24hr S.I.
 Deliverability

(See Instructions on Reverse Side)

Test Date: 9-29-04

API No. ~~15-181-20363-06-00~~ **KCS WICHITA**

15-181-20363-06-00

Company <u>Rosewood Resources</u>		Lease <u>Stasser, D</u>		Well Number <u>1-4</u>	
County <u>Sherman</u>	Location <u>SE SE</u>	Section <u>4</u>	TWP <u>7S</u>	RNG (E/W) <u>39 W</u>	Acres Attributed <u>80</u>
Field <u>Goodland</u>		Reservoir <u>Nebraska</u>	Gas Gathering Connection <u>B.S.I.</u>		
Completion Date		Plug Back Total Depth		Packer Set at	

Casing Size <u>4.5"</u>	Weight <u>10.5 #</u>	Internal Diameter <u>4.052</u>	Set at <u>1200</u>	Perforations <u>1009</u>	To <u>1050</u>
Tubing Size <u>None</u>	Weight	Internal Diameter	Set at	Perforations	To

Type Completion (Describe) <u>SINGLE (Vertical)</u>	Type Fluid Production <u>GAS</u>	Pump Unit or Traveling Plunger? Yes <input type="checkbox"/> No <input checked="" type="checkbox"/>
Producing Thru (Annulus / Tubing) <u>Annulus</u>	% Carbon Dioxide <u>1.0</u>	% Nitrogen <u>18.0</u>
		Gas Gravity - G _g <u>0.64</u>

Vertical Depth(H) <u>1200 TD 1050 H</u>	Pressure Taps <u>Flange</u>	(Meter Run) (Prover) Size <u>(2")</u>
--	--------------------------------	--

Pressure Buildup: Shut in _____ 20____ at _____ (AM) (PM) Taken <u>9-29</u> 20 <u>04</u> at <u>7</u> (AM) (PM)
Well on Line: Started <u>9-29</u> 20 <u>04</u> at <u>3</u> (AM) (PM) Taken <u>10-1</u> 20 <u>04</u> at <u>7</u> (AM) (PM)

OBSERVED SURFACE DATA

Duration of Shut-in _____ Hours

Static / Dynamic Property	Orifice Size (inches)	Circle one: Meter or Prover Pressure psig (Pm)	Pressure Differential in Inches H ₂ O	Flowing Temperature t	Well Head Temperature t	Casing Wellhead Pressure (P _w) or (P _i) or (P _c)		Tubing Wellhead Pressure (P _w) or (P _i) or (P _c)		Duration (Hours)	Liquid Produced (Barrels)
						psig	psia	psig	psia		
Shut-In						<u>64</u>	<u>78.4</u>				
Flow						<u>57</u>	<u>71.4</u>			<u>24</u>	

FLOW STREAM ATTRIBUTES

Plate Coefficient (F _d) (F _v) Mcfd	Circle one: Meter or Prover Pressure psia	Press Extension $\sqrt{P_m \times h}$	Gravity Factor F _g	Flowing Temperature Factor F _t	Deviation Factor F _{pv}	Metered Flow R (Mcfd)	GOR (Cubic Feet/ Barrel)	Flowing Fluid Gravity G _m
						<u>24</u>		

(OPEN FLOW) (DELIVERABILITY) CALCULATIONS

(P_a)² = 0.207

(P_d)² = _____

(P_c)² = _____ : (P_w)² = _____ : P_d = _____ % (P_c - 14.4) + 14.4 = _____ :

(P _c) ² - (P _a) ² or (P _c) ² - (P _d) ²	(P _c) ² - (P _w) ²	Choose formula 1 or 2: 1. P _c ² - P _a ² 2. P _c ² - P _d ² divided by: P _c ² - P _w ²	LOG of formula 1. or 2. and divide by: $\frac{P_c^2 - P_w^2}{P_c^2 - P_a^2}$	Backpressure Curve Slope = "n" or Assigned Standard Slope	n x LOG	Antilog	Open Flow Deliverability Equals R x Antilog (Mcfd)

Open Flow _____ Mcfd @ 14.65 psia Deliverability _____ Mcfd @ 14.65 psia

The undersigned authority, on behalf of the Company, states that he is duly authorized to make the above report and that he has knowledge of the facts stated therein, and that said report is true and correct. Executed this the 15 day of January, 2005.

Witness (if any) Dennis Hawk
For Company

For Commission _____
Checked by

I declare under penalty of perjury under the laws of the state of Kansas that I am authorized to request exempt status under Rule K.A.R. 82-3-304 on behalf of the operator Rosewood Resources and that the foregoing pressure information and statements contained on this application form are true and correct to the best of my knowledge and belief based upon available production summaries and lease records of equipment installation and/or upon type of completion or upon use being made of the gas well herein named.

I hereby request a one-year exemption from open flow testing for the STASSEE, D 1-4 gas well on the grounds that said well:

(Check one)

- is a coalbed methane producer
- is cycled on plunger lift due to water
- is a source of natural gas for injection into an oil reservoir undergoing ER
- is on vacuum at the present time; KCC approval Docket No. _____
- is not capable of producing at a daily rate in excess of 250 mcf/D

I further agree to supply to the best of my ability any and all supporting documents deemed by Commission staff as necessary to corroborate this claim for exemption from testing.

Date: 1/15/04

Signature: *Dennis Stassee*
Title: *Reservoir Engineer*

Instructions: If a gas well meets one of the eligibility criteria set out in KCC regulation K.A.R. 82-3-304, the operator may complete the statement provided above in order to claim exempt status for the gas well.

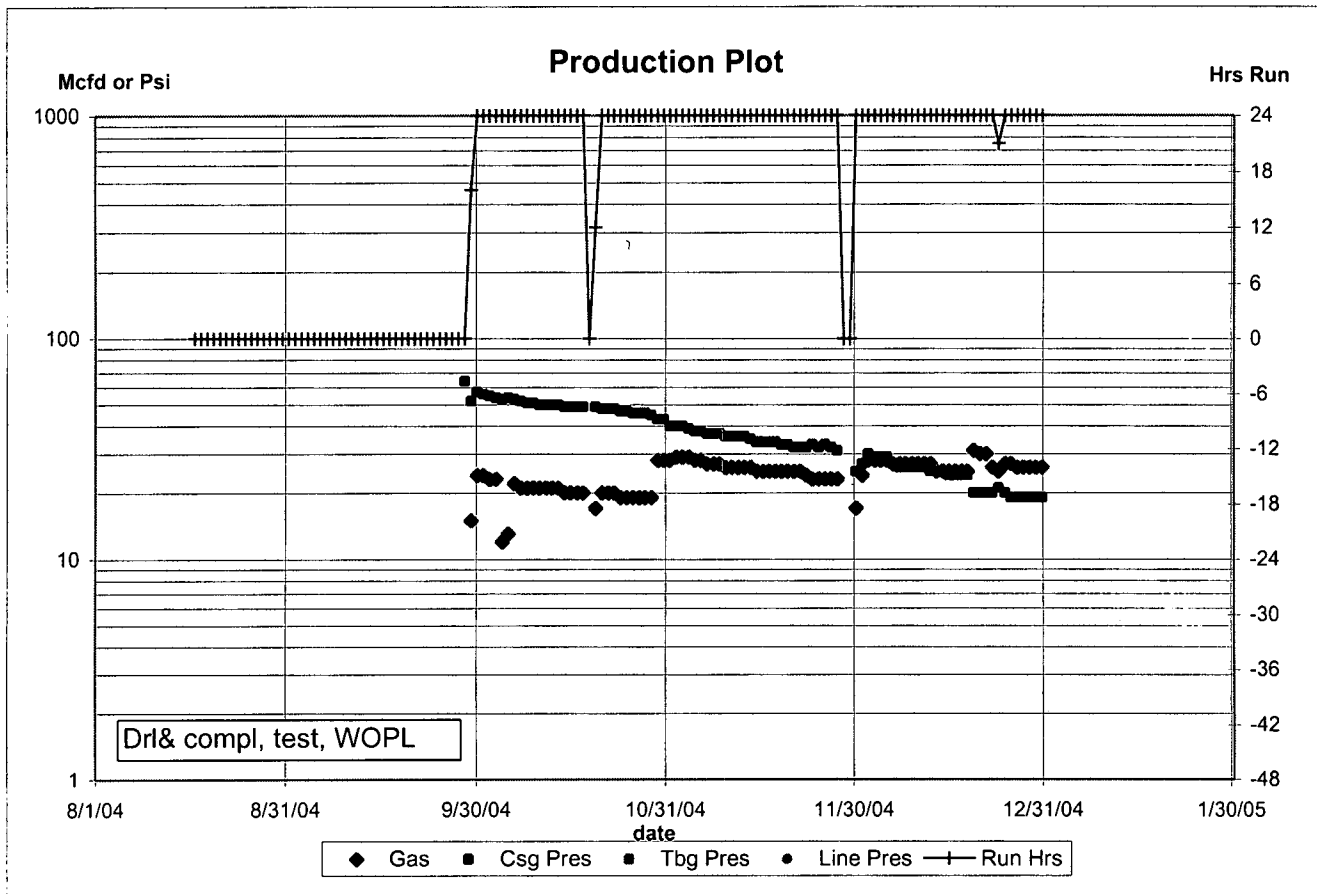
At some point during the current calendar year, wellhead shut-in pressure shall have been measured after a minimum of 24 hours shut-in/buildup time and shall be reported on the front side of this form under **OBSERVED SURFACE DATA**. Shut-in pressure shall thereafter be reported yearly in the same manner for so long as the gas well continues to meet the eligibility criterion or until the claim of eligibility for exemption **IS** denied.

The G-2 form conveying the newest shut-in pressure reading shall be filed with the Wichita office no later than December 31 of the year for which it's intended to acquire exempt status for the subject well. The form must be signed and dated on the front side as though it was a verified report of annual test results.

Actual
STASSER,D 01-04

	<u>Gas</u>	<u>Csg Press</u>	<u>Tbg Press</u>	<u>Line Press</u>	<u>Hrs</u>	
2004/01						
2004/02						
2004/03						
2004/04						
2004/05						
2004/06						
2004/07						
2004/08	null	null	null	null	null	Spud, TD, Set Csg
2004/09	15	58.0	null	null	16.0	Perf, N2Frac, G-2, online
2004/10	615	49.6	null	null	23.6	
2004/11	721	35.1	null	null	24.0	
2004/12	818	23.6	null	null	23.9	
TOTAL	2169	41.6			21.9	

RECEIVED
JAN 24 2005
KCC WICHITA



Actual						
Stasser,D 01-04						
Gas	Csg Press	Tbg Press	Line Press	Hrs		
11/01/2004	28	40 null	null		24	
11/02/2004	29	40 null	null		24	
11/03/2004	29	40 null	null		24	
11/04/2004	29	39 null	null		24	
11/05/2004	28	38 null	null		24	
11/06/2004	28	38 null	null		24	
11/07/2004	27	37 null	null		24	
11/08/2004	27	37 null	null		24	
11/09/2004	27	37 null	null		24	
11/10/2004	26	36 null	null		24	
11/11/2004	26	36 null	null		24	
11/12/2004	26	36 null	null		24	
11/13/2004	26	36 null	null		24	
11/14/2004	26	35 null	null		24	
11/15/2004	25	34 null	null		24	
11/16/2004	25	34 null	null		24	
11/17/2004	25	34 null	null		24	
11/18/2004	25	34 null	null		24	
11/19/2004	25	33 null	null		24	
11/20/2004	25	33 null	null		24	
11/21/2004	25	32 null	null		24	
11/22/2004	25	32 null	null		24	
11/23/2004	24	32 null	null		24	
11/24/2004	23	33 null	null		24	
11/25/2004	23	32 null	null		24	
11/26/2004	23	33 null	null		24	
11/27/2004	23	32 null	null		24	
11/28/2004	23	31 null	null		24	
11/29/2004	null	null	null	null	SI	SI
11/30/2004	null	null	null	null	SI	SI
12/01/2004	17	25 null	null		24	
12/02/2004	24	27 null	null		24	
12/03/2004	28	30 null	null		24	
12/04/2004	28	29 null	null		24	
12/05/2004	28	29 null	null		24	
12/06/2004	28	29 null	null		24	
12/07/2004	27	27 null	null		24	
12/08/2004	27	26 null	null		24	
12/09/2004	27	26 null	null		24	
12/10/2004	27	26 null	null		24	
12/11/2004	27	26 null	null		24	
12/12/2004	27	26 null	null		24	
12/13/2004	27	25 null	null		24	
12/14/2004	25	25 null	null		24	
12/15/2004	25	25 null	null		24	
12/16/2004	25	24 null	null		24	
12/17/2004	25	24 null	null		24	
12/18/2004	25	24 null	null		24	
12/19/2004	25	24 null	null		24	
12/20/2004	31	20 null	null		24	
12/21/2004	30	20 null	null		24	
12/22/2004	30	20 null	null		24	
12/23/2004	26	20 null	null		24	
12/24/2004	25	21 null	null		21	
12/25/2004	27	20 null	null		24	
12/26/2004	27	19 null	null		24	
12/27/2004	26	19 null	null		24	
12/28/2004	26	19 null	null		24	
12/29/2004	26	19 null	null		24	
12/30/2004	26	19 null	null		24	
12/31/2004	26	19 null	null		24	
2004	2169	41.58894 null	null		21.87581	

RECEIVED
 JAN 24 2005
 KCC WICHITA

Actual						
Stasser,D 01-04						
	Gas	Csg Press	Tbg Press	Line Press	Hrs	
08/17/2004	null	null	null	null	null	Spud 11:00am Set Surf Csg 318 & WOC
08/18/2004	null	null	null	null	null	TD 1200 set 4.5" 10.5# Prd Csg @ 1200
08/19/2004	null	null	null	null	null	WOC. RR. RDMO. & WOCU
08/20/2004	null	null	null	null	null	WOCU day 1
08/21/2004	null	null	null	null	null	WOCU day 2
08/22/2004	null	null	null	null	null	WOCU day 3
08/23/2004	null	null	null	null	null	WOCU day 4
08/24/2004	null	null	null	null	null	WOCU day 5
08/25/2004	null	null	null	null	null	WOCU day 6
08/26/2004	null	null	null	null	null	WOCU day 7
08/27/2004	null	null	null	null	null	WOCU day 8
08/28/2004	null	null	null	null	null	WOCU day 9
08/29/2004	null	null	null	null	null	WOCU day 10
08/30/2004	null	null	null	null	null	WOCU day 11
08/31/2004	null	null	null	null	null	WOCU day 12
09/01/2004	0	null	null	null	null	0 WOCU day 13
09/02/2004	0	null	null	null	null	0 WOCU day 14
09/03/2004	0	null	null	null	null	0 WOCU day 15
09/04/2004	0	null	null	null	null	0 WOCU day 16
09/05/2004	0	null	null	null	null	0 WOCU day 17
09/06/2004	0	null	null	null	null	0 WOCU day 18
09/07/2004	0	null	null	null	null	0 WOCU day 19
09/08/2004	0	null	null	null	null	0 WOCU day 20
09/09/2004	0	null	null	null	null	0 WOCU day 21
09/10/2004	0	null	null	null	null	0 WOCU day 22
09/11/2004	0	null	null	null	null	0 WOCU day 23
09/12/2004	0	null	null	null	null	0 TOC400 PBTD 1200 Perf 1009-1050 spf2
09/13/2004	0	null	null	null	null	0 N2FRAC 100k# SICP 2hr & Flo to Pit 14/64"
09/14/2004	0	null	null	null	null	0 FCP 14/64 chk. Gd Mist & SOW
09/15/2004	0	null	null	null	null	0 FCP 14/64 chk. Gd Mist & SOW
09/16/2004	0	null	null	null	null	0 FCP 20/64 chk. Hvy Mist & SOW
09/17/2004	0	null	null	null	null	0 FCP 20/64 chk. Lt Mist & SOW & Gas & N2
09/18/2004	0	null	null	null	null	0 FCP 20/64 chk Lt Mist & SOW
09/19/2004	0	null	null	null	null	0 FCP 20/64 chk Dry Gas. Shut In.
09/20/2004	0	null	null	null	null	0 SI = 24 hrs. WOPL day: 7
09/21/2004	0	null	null	null	null	0 SI = 48 hrs. WOPL
09/22/2004	0	null	null	null	null	0 SI = 72 hrs. WOPL
09/23/2004	0	null	null	null	null	0 SI = 96 hrs. WOPL
09/24/2004	0	null	null	null	null	0 SI = 120 hrs. WOPL
09/25/2004	0	null	null	null	null	0 SI = 144 hrs. WOPL
09/26/2004	0	null	null	null	null	0 SI = 168 hrs. WOPL
09/27/2004	0	null	null	null	null	0 SI = 192 hrs. WOPL
09/28/2004	0	null	null	null	null	0 SI = 216 hrs. WOPL day: 15
09/29/2004	0	64	null	null	null	0 SICP Hrs: 224 G-2 taken. On Line.
09/30/2004	15	52	null	null	null	16 First Sales
10/01/2004	24	57	null	null	null	24
10/02/2004	24	56	null	null	null	24
10/03/2004	23	55	null	null	null	24
10/04/2004	23	54	null	null	null	24
10/05/2004	12	53	null	null	null	24
10/06/2004	13	54	null	null	null	24
10/07/2004	22	53	null	null	null	24
10/08/2004	21	52	null	null	null	24
10/09/2004	21	51	null	null	null	24
10/10/2004	21	51	null	null	null	24
10/11/2004	21	50	null	null	null	24
10/12/2004	21	50	null	null	null	24
10/13/2004	21	50	null	null	null	24
10/14/2004	21	50	null	null	null	24
10/15/2004	20	49	null	null	null	24
10/16/2004	20	49	null	null	null	24
10/17/2004	20	49	null	null	null	24
10/18/2004	20	49	null	null	null	24
10/19/2004	0	null	null	null	null	0 SI
10/20/2004	17	49	null	null	null	12
10/21/2004	20	48	null	null	null	24
10/22/2004	20	48	null	null	null	24
10/23/2004	20	48	null	null	null	24
10/24/2004	19	47	null	null	null	24
10/25/2004	19	47	null	null	null	24
10/26/2004	19	46	null	null	null	24
10/27/2004	19	46	null	null	null	24
10/28/2004	19	46	null	null	null	24
10/29/2004	19	45	null	null	null	24
10/30/2004	28	43	null	null	null	24
10/31/2004	28	43	null	null	null	24