

I declare under penalty of perjury under the laws of the state of Kansas that I am authorized to request exempt status under Rule K.A.R. 82-3-304 on behalf of the operator Rosewood Resources and that the foregoing pressure information and statements contained on this application form are true and correct to the best of my knowledge and belief based upon available production summaries and lease records of equipment installation and/or upon type of completion or upon use being made of the gas well herein named.

I hereby request a one-year exemption from open flow testing for the Pancake 3-10 gas well on the grounds that said well:

(Check one)

- is a coalbed methane producer
- is cycled on plunger lift due to water
- is a source of natural gas for injection into an oil reservoir undergoing ER
- is on vacuum at the present time; KCC approval Docket No. _____
- is not capable of producing at a daily rate in excess of 250 mcf/D

I further agree to supply to the best of my ability any and all supporting documents deemed by Commission staff as necessary to corroborate this claim for exemption from testing.

Date: 1/14/05

Signature: *Armas Hunt*
Title: *Resor. Engr.*

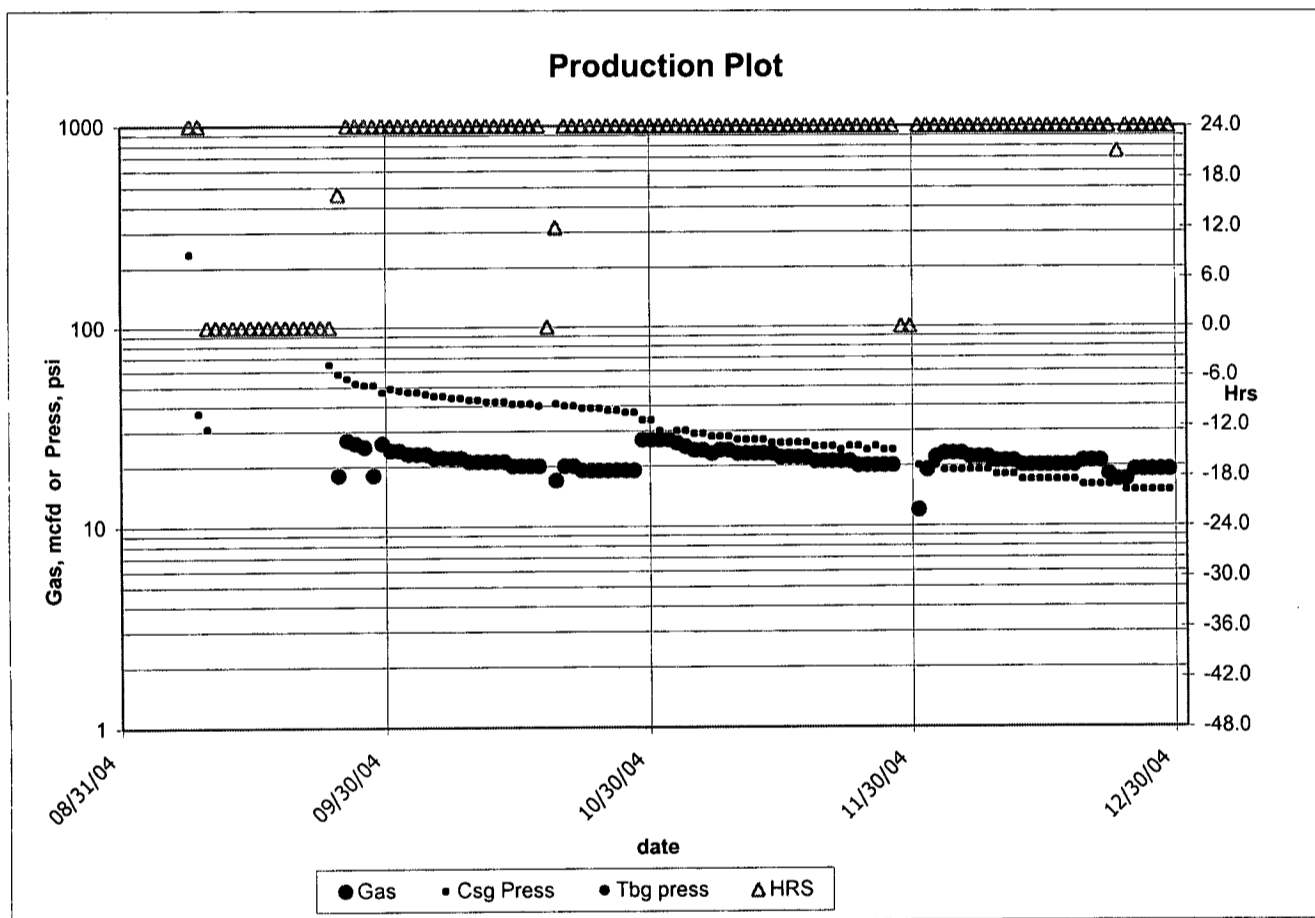
Instructions: If a gas well meets one of the eligibility criteria set out in KCC regulation K.A.R. 82-3-304, the operator may complete the statement provided above in order to claim exempt status for the gas well.

At some point during the current calendar year, wellhead shut-in pressure shall have been measured after a minimum of 24 hours shut-in/buildup time and shall be reported on the front side of this form under **OBSERVED SURFACE DATA**. Shut-in pressure shall thereafter be reported yearly in the same manner for so long as the gas well continues to meet the eligibility criterion or until the claim of eligibility for exemption **IS** denied.

The G-2 form conveying the newest shut-in pressure reading shall be filed with the Wichita office no later than December 31 of the year for which it's intended to acquire exempt status for the subject well. The form must be signed and dated on the front side as though it was a verified report of annual test results.

Actual
PANCAKE 03-10

	<u>Gas</u>	<u>Csq Press</u>	<u>Tbg Press</u>	<u>Line Press</u>	<u>Hrs</u>	<u>Remarks</u>
2004/01	null	null	null	null	null	
2004/02	null	null	null	null	null	
2004/03	null	null	null	null	null	
2004/04	null	null	null	null	null	
2004/05	null	null	null	null	null	
2004/06	null	null	null	null	null	
2004/07	null	null	null	null	null	
2004/08	null	null	null	null	null	
2004/09	140	54.1	null	null	22.7	
2004/10	634	41.5	null	null	23.6	
2004/11	632	26.6	null	null	24.0	
2004/12	620	17.2	null	null	23.9	
TOTAL	2026	34.9			23.5	



RECEIVED
JAN 24 2005
KCC WICHITA

Actual PANCAKE 03-10					
	Gas	Csg Press	Tbg Press	Line Press	Hrs Remarks
08/13/2004	null	null	null	null	SPUD & set surf WOCTDR
08/14/2004	null	null	null	null	WOCTDR
08/15/2004	null	null	null	null	WOCTDR
08/16/2004	null	null	null	null	WOCTDR
08/17/2004	null	null	null	null	DRL TD 1200 SET Slim Csg @1185
08/18/2004	null	null	null	null	WOCT
08/19/2004	null	null	null	null	WOCT
08/20/2004	null	null	null	null	WOCT
08/21/2004	null	null	null	null	WOCT
08/22/2004	null	null	null	null	WOCT
08/23/2004	null	null	null	null	WOCT
08/24/2004	null	null	null	null	PBTD 1174
08/25/2004	null	null	null	null	WOFU
08/26/2004	null	null	null	null	WOFU
08/27/2004	null	null	null	null	WOFU
08/28/2004	null	null	null	null	WOFU
08/29/2004	null	null	null	null	WOFU
08/30/2004	null	null	null	null	WOFU
08/31/2004	null	null	null	null	WOFU
09/01/2004	0	null	null	null	WOFU
09/02/2004	0	null	null	null	WOFU
09/03/2004	0	null	null	null	WOFU
09/04/2004	0	null	null	null	WOFU
09/05/2004	0	null	null	null	WOFU
09/06/2004	0	null	null	null	WOFU
09/07/2004	0	null	null	null	N2Frac 100k# & SICP 2hr
09/08/2004	0	235.0	null	null	24.0 FCP 20/64 Chk to Pit
09/09/2004	0	37.0	null	null	24.0 FCP 20/64 Chk to Pit, clean
09/10/2004	0	31.0	null	null	0.0 FCP 20/64 DryG & SI
09/11/2004	0	null	null	null	0.0 SI 12
09/12/2004	0	null	null	null	0.0 SI 36
09/13/2004	0	null	null	null	0.0 SI 60
09/14/2004	0	null	null	null	0.0 SI 84
09/15/2004	0	null	null	null	0.0 SI 108
09/16/2004	0	null	null	null	0.0 SI 132
09/17/2004	0	null	null	null	0.0 SI 156
09/18/2004	0	null	null	null	0.0 SI 180
09/19/2004	0	null	null	null	0.0 SI 204
09/20/2004	0	null	null	null	0.0 SI 228
09/21/2004	0	null	null	null	0.0 SI 252
09/22/2004	0	null	null	null	0.0 SI 276
09/23/2004	0	null	null	null	0.0 SI 300
09/24/2004	0	65.0	null	null	0.0 SI 324 & G-2 & on line
09/25/2004	18	58.0	null	null	16.0
09/26/2004	27	55.0	null	null	24.0
09/27/2004	26	52.0	null	null	24.0
09/28/2004	25	51.0	null	null	24.0
09/29/2004	18	51.0	null	null	24.0
09/30/2004	26	47.0	null	null	24.0
10/01/2004	24	49.0	null	null	24.0
10/02/2004	24	48.0	null	null	24.0
10/03/2004	23	47.0	null	null	24.0
10/04/2004	23	47.0	null	null	24.0
10/05/2004	23	46.0	null	null	24.0
10/06/2004	22	45.0	null	null	24.0
10/07/2004	22	45.0	null	null	24.0
10/08/2004	22	44.0	null	null	24.0
10/09/2004	22	44.0	null	null	24.0
10/10/2004	21	43.0	null	null	24.0
10/11/2004	21	43.0	null	null	24.0
10/12/2004	21	42.0	null	null	24.0
10/13/2004	21	42.0	null	null	24.0
10/14/2004	21	42.0	null	null	24.0
10/15/2004	20	41.0	null	null	24.0
10/16/2004	20	41.0	null	null	24.0
10/17/2004	20	41.0	null	null	24.0
10/18/2004	20	40.0	null	null	24.0
10/19/2004	0	null	null	null	0.0 SI
10/20/2004	17	41.0	null	null	12.0
10/21/2004	20	40.0	null	null	24.0
10/22/2004	20	40.0	null	null	24.0
10/23/2004	19	39.0	null	null	24.0
10/24/2004	19	39.0	null	null	24.0
10/25/2004	19	39.0	null	null	24.0

RECEIVED
 JAN 24 2005
 KCC WICHITA

Actual PANCAKE 03-10						
	Gas	Csg Press	Tbg Press	Line Press	Hrs	Remarks
10/26/2004	19	38.0	null	null	24.0	
10/27/2004	19	38.0	null	null	24.0	
10/28/2004	19	37.0	null	null	24.0	
10/29/2004	19	37.0	null	null	24.0	
10/30/2004	27	34.0	null	null	24.0	
10/31/2004	27	34.0	null	null	24.0	
11/01/2004	27	30.0	null	null	24.0	
11/02/2004	27	28.0	null	null	24.0	
11/03/2004	26	30.0	null	null	24.0	
11/04/2004	25	30.0	null	null	24.0	
11/05/2004	24	29.0	null	null	24.0	
11/06/2004	24	29.0	null	null	24.0	
11/07/2004	23	28.0	null	null	24.0	
11/08/2004	24	28.0	null	null	24.0	
11/09/2004	24	28.0	null	null	24.0	
11/10/2004	23	27.0	null	null	24.0	
11/11/2004	23	27.0	null	null	24.0	
11/12/2004	23	27.0	null	null	24.0	
11/13/2004	23	27.0	null	null	24.0	
11/14/2004	23	26.0	null	null	24.0	
11/15/2004	22	26.0	null	null	24.0	
11/16/2004	22	26.0	null	null	24.0	
11/17/2004	22	26.0	null	null	24.0	
11/18/2004	22	26.0	null	null	24.0	
11/19/2004	21	25.0	null	null	24.0	
11/20/2004	21	25.0	null	null	24.0	
11/21/2004	21	25.0	null	null	24.0	
11/22/2004	21	24.0	null	null	24.0	
11/23/2004	21	25.0	null	null	24.0	
11/24/2004	20	25.0	null	null	24.0	
11/25/2004	20	24.0	null	null	24.0	
11/26/2004	20	25.0	null	null	24.0	
11/27/2004	20	24.0	null	null	24.0	
11/28/2004	20	24.0	null	null	24.0	
11/29/2004	null	null	null	null	null	SI
11/30/2004	null	null	null	null	null	SI
12/01/2004	12	20.0	null	null	24.0	
12/02/2004	19	20.0	null	null	24.0	
12/03/2004	22	20.0	null	null	24.0	
12/04/2004	23	19.0	null	null	24.0	
12/05/2004	23	19.0	null	null	24.0	
12/06/2004	23	19.0	null	null	24.0	
12/07/2004	22	19.0	null	null	24.0	
12/08/2004	22	19.0	null	null	24.0	
12/09/2004	22	19.0	null	null	24.0	
12/10/2004	21	18.0	null	null	24.0	
12/11/2004	21	18.0	null	null	24.0	
12/12/2004	21	18.0	null	null	24.0	
12/13/2004	20	17.0	null	null	24.0	
12/14/2004	20	17.0	null	null	24.0	
12/15/2004	20	17.0	null	null	24.0	
12/16/2004	20	17.0	null	null	24.0	
12/17/2004	20	17.0	null	null	24.0	
12/18/2004	20	17.0	null	null	24.0	
12/19/2004	20	17.0	null	null	24.0	
12/20/2004	21	16.0	null	null	24.0	
12/21/2004	21	16.0	null	null	24.0	
12/22/2004	21	16.0	null	null	24.0	
12/23/2004	18	16.0	null	null	24.0	
12/24/2004	17	17.0	null	null	21.0	
12/25/2004	17	15.0	null	null	24.0	
12/26/2004	19	15.0	null	null	24.0	
12/27/2004	19	15.0	null	null	24.0	
12/28/2004	19	15.0	null	null	24.0	
12/29/2004	19	15.0	null	null	24.0	
12/30/2004	19	15.0	null	null	24.0	
12/31/2004	19	15.0	null	null	24.0	