

KANSAS CORPORATION COMMISSION ONE POINT STABILIZED OPEN FLOW OR DELIVERABILITY TEST

Type Test:

(See Instructions on Reverse Side)

- Open Flow
 Deliverability

Test Date: 9-24-04

API No. 15 - 181-20362-0000

Company <u>Rosewood Resources</u>		Lease <u>Due 11</u>		Well Number <u>4-17</u>	
County <u>Sherman</u>	Location <u>NE SE</u>	Section <u>17</u>	TWP <u>7S</u>	RNG (E/W) <u>39W</u>	Acres Attributed <u>160.80</u>
Field <u>Goodland</u>		Reservoir <u>Niobrara</u>	Gas Gathering Connection <u>Branch Systems Inc</u>		
Completion Date <u>9-8-04</u>		Plug Back Total Depth <u>1179</u>		Packer Set at	
Casing Size <u>2 7/8</u>	Weight <u>6.5</u>	Internal Diameter <u>2.441</u>	Set at <u>1189</u>	Perforations <u>994</u>	To <u>1020</u>
Tubing Size	Weight	Internal Diameter	Set at	Perforations	To

Type Completion (Describe) <u>Single (vertical)</u>	Type Fluid Production <u>Dry Gas</u>	Pump Unit or Traveling Plunger? Yes <input checked="" type="checkbox"/> No <input type="checkbox"/>
Producing Thru (Annulus / Tubing) <u>Annulus</u>	% Carbon Dioxide <u>0</u>	% Nitrogen <u>0</u>
Vertical Depth (H) <u>1020</u>	Pressure Taps <u>Flange</u>	Gas Gravity - G _g <u>0.64</u>
		(Meter Run) (Prover) Size <u>2"</u>
Pressure Buildup: Shut in <u>9-12</u> 20 <u>04</u> at <u>7</u> (AM) (PM) Taken <u>9-24</u> 20 <u>04</u> at <u>7</u> (AM) (PM)		
Well on Line: Started <u>9-24</u> 20 <u>04</u> at <u>7</u> (AM) (PM) Taken <u>9-25</u> 20 <u>04</u> at <u>7</u> (AM) (PM)		

OBSERVED SURFACE DATA

Duration of Shut-in 288 Hours

Static / Dynamic Property	Orifice Size (inches)	Circle one: Meter or Prover Pressure (psig (Pm))	Pressure Differential in Inches H ₂ O	Flowing Temperature t	Well Head Temperature t	Casing Wellhead Pressure (P _w) or (P _i) or (P _c)		Tubing Wellhead Pressure (P _w) or (P _i) or (P _c)		Duration (Hours)	Liquid Produced (Barrels)
						psig	psia	psig	psia		
Shut-in						<u>68</u>	<u>82.4</u>				
Flow											

RECEIVED
JAN 24 2005

FLOW STREAM ATTRIBUTES

Plate Coefficient (F _b) (F _v) Mcfd	Circle one: Meter or Prover Pressure (psia)	Press Extension $\sqrt{P_m \times h}$	Gravity Factor F _g	Flowing Temperature Factor F _{tt}	Deviation Factor F _{pv}	Metered Flow R (Mcfd)	GOR (Cubic Feet/Barrel)	Flowing Fluid Gravity G _m
						<u>20</u>		

KCC WICHITA

(OPEN FLOW) (DELIVERABILITY) CALCULATIONS

(P_c)² = _____ : (P_w)² = _____ : P_d = _____ % (P_c - 14.4) + 14.4 = _____ : (P_a)² = 0.207
(P_d)² = _____

(P _c) ² - (P _a) ² or (P _c) ² - (P _d) ²	(P _c) ² - (P _w) ²	Choose formula 1 or 2: 1. P _c ² - P _a ² 2. P _c ² - P _d ² divided by: P _c ² - P _w ²	LOG of formula 1. or 2. and divide by: $\left[\frac{P_c^2 - P_w^2}{P_c^2 - P_a^2} \right]$	Backpressure Curve Slope = "n" ----- or ----- Assigned Standard Slope	n x LOG $\left[\frac{P_c^2 - P_w^2}{P_c^2 - P_a^2} \right]$	Antilog	Open Flow Deliverability Equals R x Antilog (Mcfd)

Open Flow Mcfd @ 14.65 psia Deliverability Mcfd @ 14.65 psia

The undersigned authority, on behalf of the Company, states that he is duly authorized to make the above report and that he has knowledge of the facts stated therein, and that said report is true and correct. Executed this the 14 day of JAN, 2004.

Witness (if any)

Benjamin Harris
For Company

For Commission

Checked by

I declare under penalty of perjury under the laws of the state of Kansas that I am authorized to request exempt status under Rule K.A.R. 82-3-304 on behalf of the operator Rosewood Resource and that the foregoing pressure information and statements contained on this application form are true and correct to the best of my knowledge and belief based upon available production summaries and lease records of equipment installation and/or upon type of completion or upon use being made of the gas well herein named.

I hereby request a one-year exemption from open flow testing for the DUELL 4-17 gas well on the grounds that said well:

(Check one)

- is a coalbed methane producer
- is cycled on plunger lift due to water
- is a source of natural gas for injection into an oil reservoir undergoing ER
- is on vacuum at the present time; KCC approval Docket No. _____
- is not capable of producing at a daily rate in excess of 250 mcf/D

I further agree to supply to the best of my ability any and all supporting documents deemed by Commission staff as necessary to corroborate this claim for exemption from testing.

Date: 1/14/05

Signature: *David Hanks*

Title: Reserv. Engineer

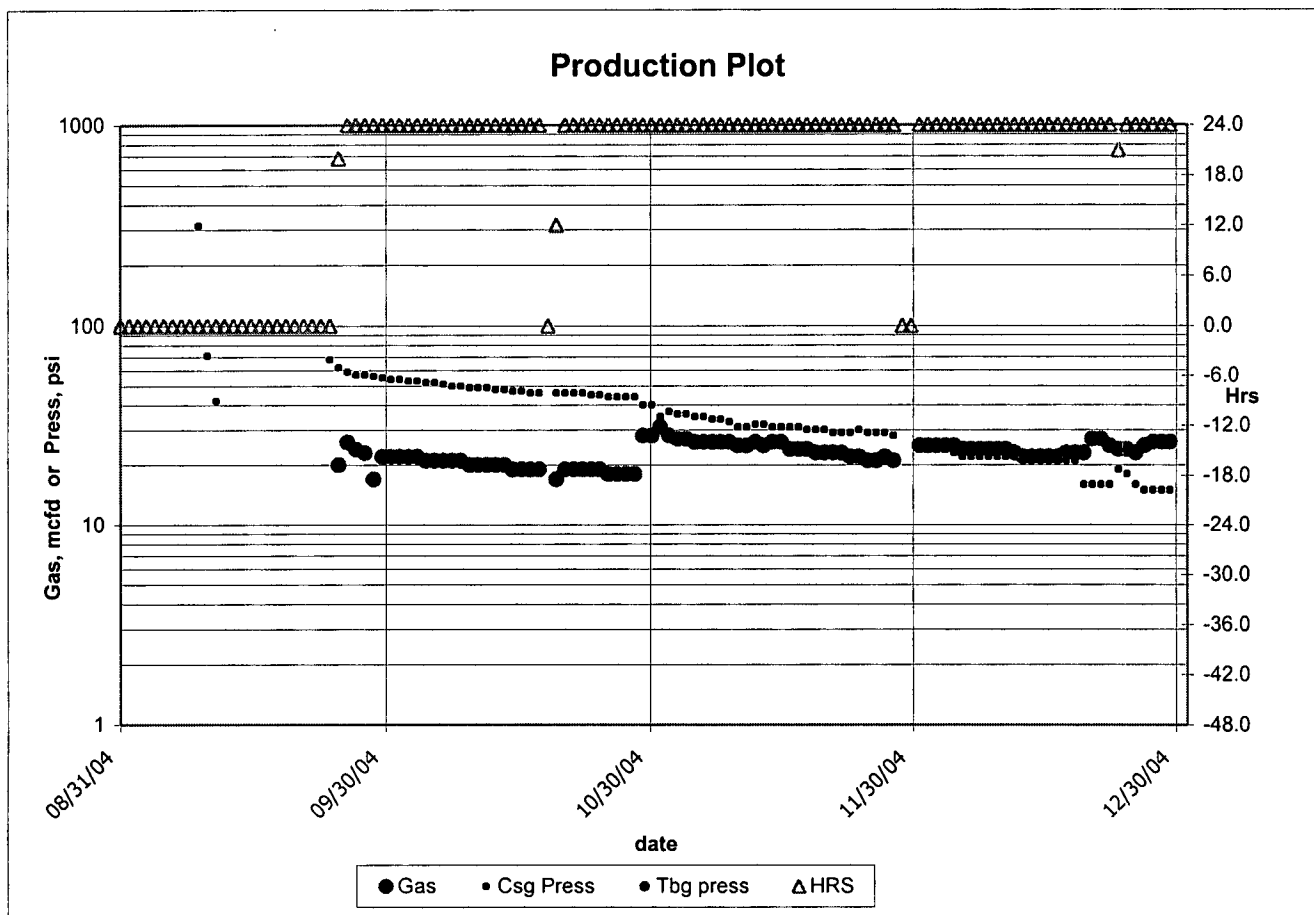
Instructions: If a gas well meets one of the eligibility criteria set out in KCC regulation K.A.R. 82-3-304, the operator may complete the statement provided above in order to claim exempt status for the gas well.

At some point during the current calendar year, wellhead shut-in pressure shall have been measured after a minimum of 24 hours shut-in/buildup time and shall be reported on the front side of this form under **OBSERVED SURFACE DATA**. Shut-in pressure shall thereafter be reported yearly in the same manner for so long as the gas well continues to meet the eligibility criterion or until the claim of eligibility for exemption **IS** denied.

The G-2 form conveying the newest shut-in pressure reading shall be filed with the Wichita office no later than December 31 of the year for which it's intended to acquire exempt status for the subject well. The form must be signed and dated on the front side as though it was a verified report of annual test results.

Actual
DUELL 04-17

	<u>Gas</u>	<u>Csq Press</u>	<u>Tbg Press</u>	<u>Line Press</u>	<u>Hrs</u>	<u>Remarks</u>
2004/01	null	null	null	null	null	null
2004/02	null	null	null	null	null	null
2004/03	null	null	null	null	null	null
2004/04	null	null	null	null	null	null
2004/05	null	null	null	null	null	null
2004/06	null	null	null	null	null	null
2004/07	null	null	null	null	null	null
2004/08	null	null	null	null	null	null
2004/09	132	59.1	null	null	23.3	null
2004/10	609	47.6	null	null	23.6	null
2004/11	689	31.7	null	null	24.0	null
2004/12	750	19.8	null	null	23.9	null
TOTAL	2180	39.6			23.7	



RECEIVED
JAN 24 2005
KCC WICHITA

Actual
DUELL 04-17

	Gas	Csg Press	Tbg Press	Line Press	Hrs	Remarks
11/02/2004	28	37.0	null	null	24.0	null
11/03/2004	27	36.0	null	null	24.0	null
11/04/2004	27	36.0	null	null	24.0	null
11/05/2004	26	35.0	null	null	24.0	null
11/06/2004	26	35.0	null	null	24.0	null
11/07/2004	26	34.0	null	null	24.0	null
11/08/2004	26	34.0	null	null	24.0	null
11/09/2004	26	33.0	null	null	24.0	null
11/10/2004	25	31.0	null	null	24.0	null
11/11/2004	25	31.0	null	null	24.0	null
11/12/2004	26	32.0	null	null	24.0	null
11/13/2004	25	32.0	null	null	24.0	null
11/14/2004	26	31.0	null	null	24.0	null
11/15/2004	26	31.0	null	null	24.0	null
11/16/2004	24	31.0	null	null	24.0	null
11/17/2004	24	31.0	null	null	24.0	null
11/18/2004	24	30.0	null	null	24.0	null
11/19/2004	23	30.0	null	null	24.0	null
11/20/2004	23	30.0	null	null	24.0	null
11/21/2004	23	29.0	null	null	24.0	null
11/22/2004	23	29.0	null	null	24.0	null
11/23/2004	22	29.0	null	null	24.0	null
11/24/2004	22	30.0	null	null	24.0	null
11/25/2004	21	29.0	null	null	24.0	null
11/26/2004	21	29.0	null	null	24.0	null
11/27/2004	22	29.0	null	null	24.0	null
11/28/2004	21	28.0	null	null	24.0	null
11/29/2004	null	null	null	null	null	null
11/30/2004	null	null	null	null	null	null
12/01/2004	25	25.0	null	null	24.0	null
12/02/2004	25	25.0	null	null	24.0	null
12/03/2004	25	25.0	null	null	24.0	null
12/04/2004	25	24.0	null	null	24.0	null
12/05/2004	25	23.0	null	null	24.0	null
12/06/2004	24	22.0	null	null	24.0	null
12/07/2004	24	22.0	null	null	24.0	null
12/08/2004	24	22.0	null	null	24.0	null
12/09/2004	24	22.0	null	null	24.0	null
12/10/2004	24	22.0	null	null	24.0	null
12/11/2004	24	22.0	null	null	24.0	null
12/12/2004	23	22.0	null	null	24.0	null
12/13/2004	22	21.0	null	null	24.0	null
12/14/2004	22	21.0	null	null	24.0	null
12/15/2004	22	21.0	null	null	24.0	null
12/16/2004	22	21.0	null	null	24.0	null
12/17/2004	22	21.0	null	null	24.0	null
12/18/2004	23	21.0	null	null	24.0	null
12/19/2004	23	21.0	null	null	24.0	null
12/20/2004	23	16.0	null	null	24.0	null
12/21/2004	27	16.0	null	null	24.0	null
12/22/2004	27	16.0	null	null	24.0	null
12/23/2004	25	16.0	null	null	24.0	null
12/24/2004	24	19.0	null	null	21.0	null
12/25/2004	24	18.0	null	null	24.0	null
12/26/2004	23	16.0	null	null	24.0	null
12/27/2004	25	15.0	null	null	24.0	null
12/28/2004	26	15.0	null	null	24.0	null
12/29/2004	26	15.0	null	null	24.0	null
12/30/2004	26	15.0	null	null	24.0	null
12/31/2004	26	15.0	null	null	24.0	null

RECEIVED
JAN 24 2005
KCC WICHITA

Actual
DUELL 04-17

	Gas	Csg Press	Tbg Press	Line Press	Hrs	Remarks
08/20/2004	null	null	null	null	null	SPUD
08/21/2004	null	null	null	null	null	TD 1220
08/22/2004	null	null	null	null	null	Csg set 1189
08/23/2004	null	null	null	null	null	SI WOCT
08/24/2004	null	null	null	null	null	PBTD 1179 & SI
08/25/2004	null	null	null	null	null	SI WOCT
08/26/2004	null	null	null	null	null	SI WOCT
08/27/2004	null	null	null	null	null	SI WOCT
08/28/2004	null	null	null	null	null	SI WOCT
08/29/2004	null	null	null	null	null	SI WOCT
08/30/2004	null	null	null	null	null	SI WOCT
08/31/2004	null	null	null	null	null	SI WOCT
09/01/2004	0	null	null	null	0.0	SI WOCT
09/02/2004	0	null	null	null	0.0	SI WOCT
09/03/2004	0	null	null	null	0.0	SI WOCT
09/04/2004	0	null	null	null	0.0	SI WOCT
09/05/2004	0	null	null	null	0.0	SI WOCT
09/06/2004	0	null	null	null	0.0	SI WOCT
09/07/2004	0	null	null	null	0.0	PERF 984-1020 w/2spf
09/08/2004	0	null	null	null	0.0	FRAC 50K#
09/09/2004	0	314.0	null	null	0.0	Chk 18/64 flo DryG to pits
09/10/2004	0	71.0	null	null	0.0	Chk 18/64 flo DryG to pits
09/11/2004	0	42.0	null	null	0.0	Chk 18/64 flo DryG & SI
09/12/2004	0	null	null	null	0.0	SI WOPL
09/13/2004	0	null	null	null	0.0	SI WOPL
09/14/2004	0	null	null	null	0.0	SI WOPL
09/15/2004	0	null	null	null	0.0	SI WOPL
09/16/2004	0	null	null	null	0.0	SI WOPL
09/17/2004	0	null	null	null	0.0	SI WOPL
09/18/2004	0	null	null	null	0.0	SI WOPL
09/19/2004	0	null	null	null	0.0	SI WOPL
09/20/2004	0	null	null	null	0.0	SI WOPL
09/21/2004	0	null	null	null	0.0	SI WOPL
09/22/2004	0	null	null	null	0.0	SI WOPL
09/23/2004	0	null	null	null	0.0	SI WOPL
09/24/2004	0	68.0	null	null	0.0	SI G-2 & on line
09/25/2004	20	62.0	null	null	20.0	null
09/26/2004	26	59.0	null	null	24.0	null
09/27/2004	24	57.0	null	null	24.0	null
09/28/2004	23	57.0	null	null	24.0	null
09/29/2004	17	56.0	null	null	24.0	null
09/30/2004	22	55.0	null	null	24.0	null
10/01/2004	22	54.0	null	null	24.0	null
10/02/2004	22	54.0	null	null	24.0	null
10/03/2004	22	53.0	null	null	24.0	null
10/04/2004	22	53.0	null	null	24.0	null
10/05/2004	21	52.0	null	null	24.0	null
10/06/2004	21	52.0	null	null	24.0	null
10/07/2004	21	51.0	null	null	24.0	null
10/08/2004	21	50.0	null	null	24.0	null
10/09/2004	21	50.0	null	null	24.0	null
10/10/2004	20	49.0	null	null	24.0	null
10/11/2004	20	49.0	null	null	24.0	null
10/12/2004	20	49.0	null	null	24.0	null
10/13/2004	20	48.0	null	null	24.0	null
10/14/2004	20	48.0	null	null	24.0	null
10/15/2004	19	47.0	null	null	24.0	null
10/16/2004	19	47.0	null	null	24.0	null
10/17/2004	19	46.0	null	null	24.0	null
10/18/2004	19	46.0	null	null	24.0	null
10/19/2004	0	null	null	null	0.0	null
10/20/2004	17	46.0	null	null	12.0	null
10/21/2004	19	46.0	null	null	24.0	null
10/22/2004	19	46.0	null	null	24.0	null
10/23/2004	19	46.0	null	null	24.0	null
10/24/2004	19	45.0	null	null	24.0	null
10/25/2004	19	45.0	null	null	24.0	null
10/26/2004	18	44.0	null	null	24.0	null
10/27/2004	18	44.0	null	null	24.0	null
10/28/2004	18	44.0	null	null	24.0	null
10/29/2004	18	44.0	null	null	24.0	null
10/30/2004	28	40.0	null	null	24.0	null
10/31/2004	28	40.0	null	null	24.0	null
11/01/2004	31	35.0	null	null	24.0	null