

15-023-20044-0000

Holzworth 1-1

STATE OF KANSAS - CORPORATION COMMISSION
ONE POINT STABILIZED OPEN FLOW OR DELIVERABILITY TEST

FORM G-2
8-7-58

TYPE TEST: Deliverability [X] Open Flow TEST DATE: 9/23/77
COMPANY: Kan.-Nebr. Nat. Gas Co. LEASE: Holzworth WELL NO.: 1-1
COUNTY: Cheyenne LOCATION: 1320' FNL - 1320' FEL SECTION: 1 TWP: 5S RNG: 42W ACRES: 160
FIELD: Wildcat RESERVOIR: Niobrara PIPELINE CONNECTION: None
COMPLETION DATE: PLUG BACK TOTAL DEPTH: PACKER SET AT:
CASING SIZE: 4 1/2" WT. 9.5# I.D. 1488' SET AT 1374' PERF. TO 1392'
TUBING SIZE: No. TBG WT. I.D. SET AT PERF. TO
TYPE COMPLETION (Describe): Single (Gas) TYPE FLUID PRODUCTION: None
PRODUCING THRU: Casing RESERVOIR TEMPERATURE F: Est. Bar. Pres. 13.0 Psia BAR. PRESS - P\_b
GAS GRAVITY - G\_g: 0.654 % CARBON DIOXIDE: --- % NITROGEN: --- API GRAVITY OF LIQUID: ---
VERTICAL DEPTH (H): TYPE METER CONN.: None (METER RUN) (PROVER) SIZE: Tested with 2" Critical Flow Prover
SHUT-IN PRESSURE: SHUT IN 9/28 19 77 AT 9:45 (AM)(PM) TAKEN 9/28 19 77 AT 9:55 (AM)(PM) TAKEN 9/29 19 77 AT 9:55 (AM)(PM) TAKEN

OBSERVED DATA DURATION OF SHUT-IN: 2 1/2 HRS

Table with columns: SHUT-IN OR FLOW, ORIFICE SIZE in., (METER) (PROVER) PRESSURE psig, DIFF. in. (h\_w)(h\_d), FLOWING TEMP. t, WELL-HEAD TEMP. t, CASINO WELLHEAD PRESS. psig, (P\_w)(P\_i)(P\_c) psia, TUBING WELLHEAD PRESS. psig, (P\_w)(P\_i)(P\_c) psia, DURATION HOURS, LIQUID PROD. Bbls.

RATE OF FLOW CALCULATIONS

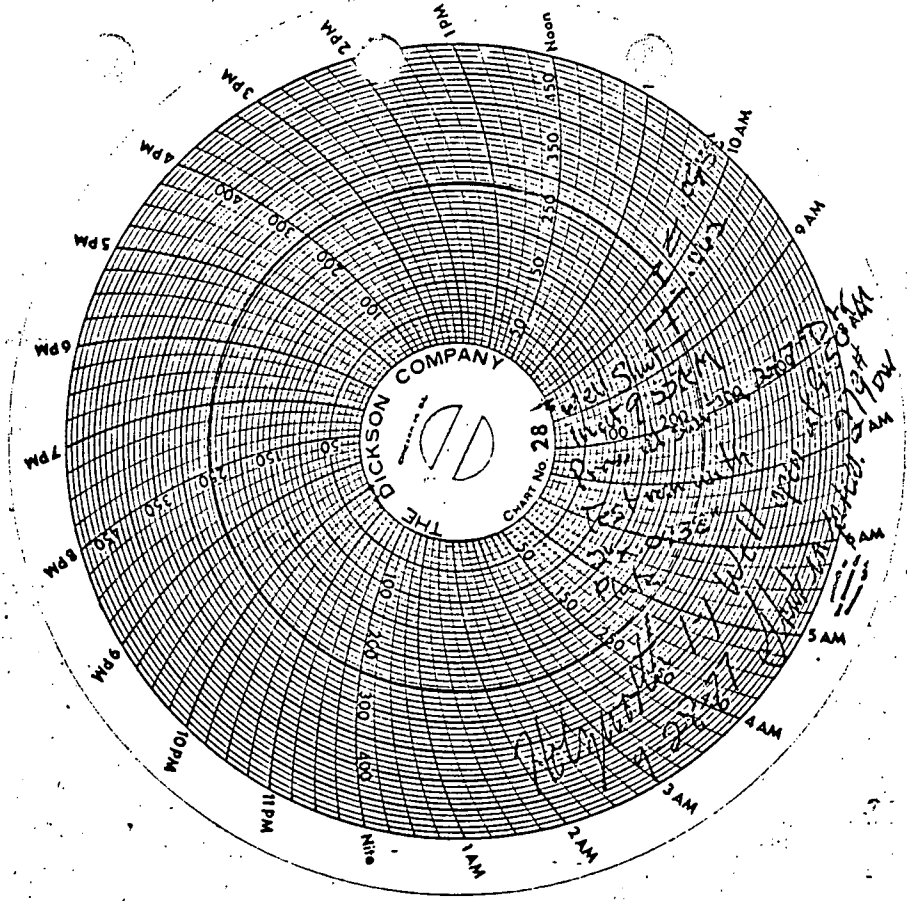
Table with columns: COEFFICIENT (F\_b)(Z\_o) Mcfd, (METER) (PROVER) PRESSURE psia, EXTENSION sqrt(P\_m z h\_w), GRAVITY FACTOR F\_g, FLOWING TEMP. F\_t, DEVIATION FACTOR F\_pv, RATE OF FLOW R Mcfd, GOR, G\_m

(OPEN FLOW) (DELIVERABILITY) CALCULATIONS

Table with columns: (P\_c)^2 - (P\_w)^2, (P\_c)^2 - (P\_w)^2, (P\_c^2 - P\_w^2) / (P\_c^2 - P\_w^2), LOG [ ], "n", n x LOG [ ], ANTILOG, OPEN FLOW DELIVERABILITY EQUALS R x ANTILOG Mcfd

OPEN FLOW 189.35 Mcfd @ 14.65 psia DELIVERABILITY Mcfd @ 14.65 psia

The undersigned authority, on behalf of the Company, states that he is duly authorized to make the above report and that he has knowledge of the facts stated therein, and that said report is true and correct.
Executed this the 30th day of September, 1977.
Witness (if any) NOV 23 1977 For Company





INTER-OFFICE CORRESPONDENCE

*Holzworth 1-1*

OFFICE Wray Production

DATE 9/30/77

TO: Whom It May Concern

IN RE: Holzworth #1-1 Well Test

This well was tested with a 24 hr. one point stabilization test. The open flow was calibrated using the average slope ("n") from the Multipoint tests done on the O'Brien 1-30 and 1-31 and the Harkins 1-29.

Steven Steele

7300

