

15-181-20220-00-00
STATE OF KANSAS - CORPORATION COMMISSION
 ONE POINT STABILIZED OPEN FLOW OR DELIVERABILITY TEST

P 940
 4-5-83
 FORM G-2
 8-7-58

TYPE TEST: Deliverability Open Flow TEST DATE: 2-9-83

COMPANY: Centennial Energy Co LEASE: Wallace WELL NO.: 1-16

COUNTY: Sherman LOCATION: NW 16 SECTION: 16 TWP: 8 RNG: 39 ACRES:

FIELD: Goodland Reservoir PIPELINE CONNECTION: Halfpuck

COMPLETION DATE: PLUG BACK TOTAL DEPTH: PACKER SET AT:

CASING SIZE WT. I.D. SET AT PERF. TO

TUBING SIZE WT. I.D. SET AT PERF. TO

TYPE COMPLETION (Describe): TYPE FLUID PRODUCTION:

PRODUCING THRU: tubing RESERVOIR TEMPERATURE F: BAR. PRESS - P_a: 14.4 Psia

GAS GRAVITY - G_s: .595 % CARBON DIOXIDE: % NITROGEN: API GRAVITY OF LIQUID:

VERTICAL DEPTH (H): TYPE METER CONN.: (METER RUN) (PROVER) SIZE: 2"

SHUT-IN PRESSURE: SHUT IN 2-5 1983 AT (AM)(PM) TAKEN 2-8 1983 AT (AM)(PM)
 FLOW TEST: STARTED 2-9 1983 AT (AM)(PM) TAKEN 2-10 1983 AT (AM)(PM)

OBSERVED DATA DURATION OF SHUT-IN HR.

SHUT-IN OR FLOW	ORIFICE SIZE in.	(METER) (PROVER) PRESSURE psig	DIFF. In. (h _w)(h _d)	FLOWING TEMP. t	WELL-HEAD TEMP. t	CASED WELLHEAD PRESS		TUBING WELLHEAD PRESS		DURATION HOURS	LIQUID PROD. Bbls.
						psig	(P _w)(P _i)(P _c) psia	psig	(P _w)(P _i)(P _c) psia		
SHUT-IN						18.4	32.8				
FLOW	5.128	18.4	12.0			8.6	23.0				

RATE OF FLOW CALCULATIONS

COEFFICIENT (F _p)(F _d) Mcd	(METER) (PROVER) PRESSURE psia	EXTENSION √P _m xh _w	GRAVITY FACTOR F _g	FLOWING TEMP. FACTOR F _t	DEVIATION FACTOR F _{pv}	RATE OF FLOW R Mcd	GOR	G _m
1.225	22.8	16.541	1.296	1.000	1.000	26.0		

(OPEN FLOW) (DELIVERABILITY) CALCULATIONS

(P_c)² = 1,076 (P_w)² = .529 P_d = _____ % (P_c - 14.4) + 14.4 = _____ (P_a)² = 0.207 (P_d)² = _____

$\frac{(P_c)^2 - (P_a)^2}{(P_c)^2 - (P_d)^2}$	$(P_c)^2 - (P_w)^2$	$\frac{P_c^2 - P_a^2}{P_c^2 - P_w^2}$	LOG []	"n"	"n" x LOG []	ANTILOG	OPEN FLOW DELIVERABILITY EQUALS R x ANTILOG Mcd
.876	.547	1.4015	.2045	.718	.1469	1.4023	36

OPEN FLOW 36 Mcd @ 14.65 psia DELIVERABILITY Mcd @ 14.65 psia

The undersigned authority, on behalf of the Company, states that he is duly authorized to make the above report and that he has knowledge of the facts stated therein, and that said report is true and correct.

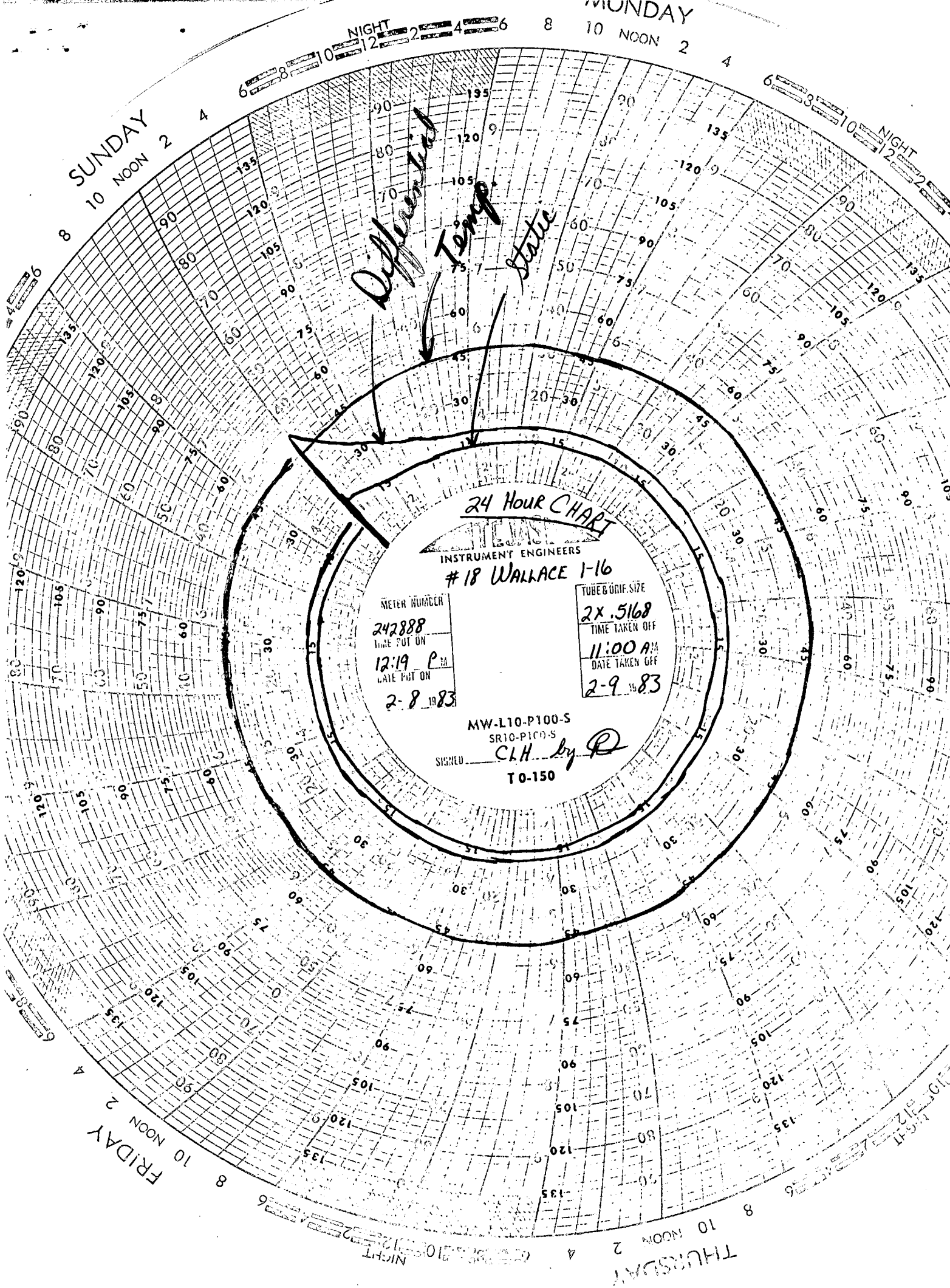
Executed this the _____ day of _____ 1983
 RECEIVED STATE CORPORATION COMMISSION

Witness (if any)
 Olyse Wiley
 For Commission

APR 04 1983
 CONSERVATION DIVISION
 Wichita, Kansas

For Company

 Checked by



Differential
Temp
Static

24 HOUR CHART

INSTRUMENT ENGINEERS

18 WALLACE 1-16

METER NUMBER

242888

TIME PUT ON

12:19 P.M.

DATE PUT ON

2-8-1983

TUBE & ORIF. SIZE

2x .5168

TIME TAKEN OFF

11:00 A.M.

DATE TAKEN OFF

2-9-1983

MW-L10-P100-S

SR10-P100-S

SIGNED

CLH by P

T0-150