

TYPE OR PRINT

NOTICE OF INTENTION TO DRILL

C-1

15-051-19343-0000

TO BE FILED WITH THE STATE CORPORATION COMMISSION PRIOR TO COMMENCEMENT OF WELL

1. Operator Murfin Drlg Co. & Patton Oil Co Address 617 Union Center - Wichita, Kansas
2. Lease name HADLEY Well No. E-3 County Ellis
3. Well Location SE SW SE Averbcc Sec. 20 Township 11-S Range 17-W
4. Well to be drilled 330 ft. from nearest lease line.
5. Drilling Contractor Murfin Drilling Company Address 617 Union Center - Wichita, Kansas
6. Type of equipment: Rotary Cable Tool Approx. date operation to begin 11-8-64 196
7. Well to be drilled for Oil Gas Disposal Input Estimated Total Depth of Well 3800 ft.
8. Depth of deepest fresh water well within one mile of location 100 ft. If none exists, write NONE
9. Ground elevation at location is approx. flat ft. higher or _____ ft. lower than ground elevation at water well.
10. Depth of the deepest municipal water well within three miles of location none ft. If none exists, write NONE
11. Operator states that he will set surface pipe at least 25 ft. below all Tertiary or unconsolidated deposits and, taking into consideration differences in ground elevations, that the minimum depth necessary, to the best of his knowledge and belief, to protect all fresh water zones is 100 ft. and operator agrees to set surface pipe at this location to a depth of not less than 200 ft. Alternate 1 Alternate 2 .

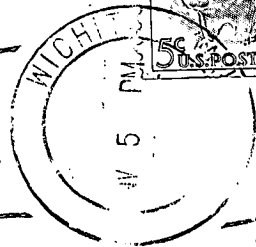
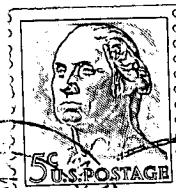
REMARKS:

MURFIN DRILLING COMPANY

Signature of Operator

By: W. R. Murfin

W. R. Murfin



State Corporation Commission of Kansas
Conservation Division
500 Insurance Building
212 North Market
Wichita, Kansas 67202

RECEIVED
STATE CORPORATION COMMISSION

NOV 6 1964

CONSERVATION DIVISION
Wichita, Kansas

(IF PREFERRED, MAIL IN ENVELOPE)