

RECEIVED
STATE CORPORATION COMMISSION

JAN 22 1975
01-22-75
CONSERVATION DIVISION
Wichita, Kansas

FORM CP-4

STATE OF KANSAS
STATE CORPORATION COMMISSION
CONSERVATION DIVISION
P. O. BOX 17027
WICHITA, KANSAS 67217

WELL PLUGGING RECORD

Ellis County, Sec. 23 Twp. 11 Rge. (E) 17 (W)

Location as "NE/CNW/SE/SW" or footage from lines SW NW NW

Lease Owner Thornton E. Anderson

Lease Name Rumsey Well No. 2

Office Address Suite 746 - 300 W. Douglas, Wichita, Kansas

Character of Well (completed as Oil, Gas or Dry Hole) oil 67202

Date well completed 19

Application for plugging filed Dec. 9 1974

Application for plugging approved 19

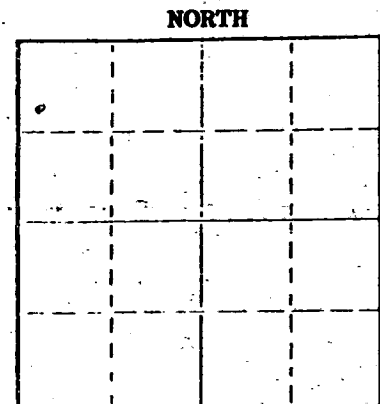
Plugging commenced Dec. 12 1974

Plugging completed Jan. 14 1975

Reason for abandonment of well or producing formation depleted

If a producing well is abandoned, date of last production 19

Was permission obtained from the Conservation Division or its agents before plugging was commenced? YES



Locate well correctly on above Section Plat

Name of Conservation Agent who supervised plugging of this well Leo Massey

Producing formation Depth to top Bottom Total Depth of Well 3444 Feet

Show depth and thickness of all water, oil and gas formations.

OIL, GAS OR WATER RECORDS

CASING RECORD

FORMATION	CONTENT	FROM	TO	SIZE	PUL IN	PULLED OUT
			1116'	10 3/4"	1116'	none
			3394'	7"	3394'	1556.70

Describe in detail the manner in which the well was plugged, indicating where the mud fluid was placed and the method or methods used in introducing it into the hole. If cement or other plugs were used, state the character of same and depth placed, from feet to feet for each plug set.

Sanded back to 3350' and dumped 6 sacks of cement.

Set 20' rock bridge at 400' and plugged well with 8 yards of ready mix cement.

Name of Plugging Contractor PIPE PULLERS, INC. (If additional description is necessary, use BACK of this sheet)
Address Box 128, Ellinwood, Kansas 67526

STATE OF KANSAS COUNTY OF BARTON ss. Evelyn Roth

(employee of owner) or (owner or operator) of the above-described well, being first duly sworn on oath, says: That I have knowledge of the facts, statements, and matters herein contained and the log of the above-described well as filed and that the same are true and correct. So help me God.

(Signature) Evelyn Roth
Ellinwood, Kansas

Subscribed and sworn to before me this 20th day of January, 1975

JENNY KASSELMAN
NOTARY PUBLIC
BARTON COUNTY, KANSAS
MY COMM. EXP. JULY 16, 1978

Jenny Kasselmann
Notary Public.

STENCILED

WELL LOG BUREAU - KANSAS GEOLOGICAL SOCIETY.
412 Union National Bank Bldg, Wichita, Kansas.

ORIGINAL

15-051-19364-0000

FFB 12 1938

SHELL PETRO. CORP.
J.L. Rumsey No. 2

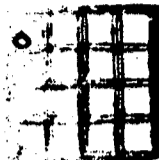
SEC. 23 T. 11 R. 17W.
SW NW NW
994' NL 330' WL

County Ellis.

Total Depth. 3418
Comm. 12-18-37 Comp. 1-17-38
Shot or Treated.
Contractor. Twin Drlg.
Issued. 2-12-38

CASING.

16" 196'
103/4" 1116'
7" 3394'



Elevation.

Production. Pot. 2000 B.
no wtr

Figures Indicate Bottom of Formations.

clay	45	lime	2690	small amount oil stain.
sand	215	shale lime shells	2725	dolomite some chert
shale and shells	266	lime	2732	poor porosity 3418
shale blue shells	356	shale lime shells	2750	small amount oil staining
shale red shells	479	lime	2762	
sand	590	shale lime shells	2806	Total Depth.
iron	598	lime	2810	
sand	623	shale	2818	
iron	628	lime	2830	
sand and iron shells	640	lime broken	2855	
sand and shells	800	lime	2870	
shale	1005	lime broken	2885	
red shale and shells	1100	lime	2935	
shale	1112	lime broken	2945	
anhydrite	1128	lime	3020	
anhydrite and lime	1155	lime broken	3040	
shale lime shells	1402	lime	3071	
shale and shells	1610	shale	3073	
salt	1660	lime	3107	
lime	1674	shale	3113	
shale and lime shells	1740	lime	3135	
lime	1760	shale	3137	
shale lime shells	1800	lime	3143	
lime	1830	lime	3230	
shale and shells	1850	shale	3233	
lime	1880	lime	3335	
shale and lime shells	1900	shale lime shells	3343	
lime	1942	lime shale breaks	3350	
shale	1960	conglomerate shale grey to		
shale lime shells	1975	green to brown lime and		
lime	1985	small amount chert	3362	
shale and lime shells	1995	dolomite	3370	
lime	2125	shale green to brown	3375	
lime broken	2134	shale green brown	3388	
lime	2165	dolomite chert	3389	
shale	2175	dolomite	3392	
lime	2225	3392 equals 3397 SLC		
shale lime shells	2295	dolomite	3401	
lime	2305	scattered porous streaks bleeding		
shale lime shells	2363	small amount oil.		
lime	2393	dolomite poor porosity streaks		
shale	2408	small amount oil staining	3404	
lime	2425	dolomite	3407	
lime broken	2438	poor porosity		
shale	2455	dolomite	3410	
shale lime shells	2518	small amount porosity and		
lime	2565	oil staining some pyrite		
shale lime shells	2625	dolomite	3412	
lime	2637	fair porosity and oil staining.		
shale lime shells	2682	dolomite	3415	

RECEIVED
STATE CORPORATION COMMISSION

DEC 10 1974

CONSERVATION DIVISION
Wichita, Kansas