

TYPE

# NOTICE OF INTENTION TO DRILL

C-1

TO BE FILED WITH THE STATE CORPORATION COMMISSION  
PRIOR TO COMMENCEMENT OF WELL

API Number 15-051-21449  
(For office use only) -0000

1. Operator Karst Brothers

Starting Date approx. 2/27/1978

Address Box 208 - Russell, Ks. 67665

County Ellis

2. Contractor Duke Drilling Co., Inc.

Sec. 1 Twp. 13 S Rge. 18 <sup>E</sup>W

Address Box 823 - Great Bend, Ks. 67530

Spot Location NE NW NE

3. Type of Equipment: Rotary x Cable Tool

Nearest Lease Line 330 ft.

4. Well to be Drilled for: Oil Gas

Lease Name STAAB

Disposal Input Other

5. Depth of Deepest Fresh Water within 1 mile 125' ft.

6. Depth of Municipal Water Well within 3 miles NONE ft.

7. Depth to Protect all Fresh Water 150 ft.

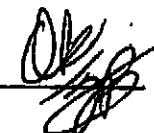
8. Amount of Surface Casing to be set approx. 200' ft.

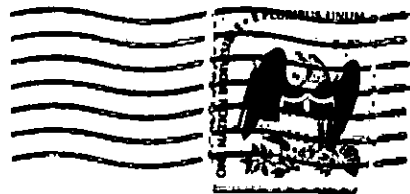
9. Alternate No. 1 --- No. 2 X

Est. Total Depth 3650 ft.

REMARKS:

OPERATOR STATES THAT HE WILL COMPLY WITH K. S. A. 58-128

Signature of Operator Donald D. Hewitt 



**State Corporation Commission of Kansas  
Conservation Division  
245 North Water  
Wichita, Kansas 67202**

02-21-78

**(IF PREFERRED, MAIL IN ENVELOPE)**