

NOTICE OF INTENTION TO DRILL

15-051-02864-00-00

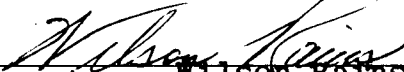
TO BE FILED WITH THE STATE CORPORATION COMMISSION PRIOR TO COMMENCEMENT OF WELL

1. Operator Rains & Williamson Oil Co. Address 1425 Wichita Plaza, Wichita, Ks.
2. Lease name BITTEL Well No. 1 County Ellis
3. Well Location C NW SW NW Sec. 6 Township 13 S Range 20 W
4. Well to be drilled 330 ft. from nearest lease line.
5. Drilling Contractor Rains & Williamson Address 1425 Wichita Plaza, Wichita, Ks.
6. Type of equipment: Rotary Cable Tool Approx. date operation to begin 7-2- 1964
7. Well to be drilled for Oil Gas Disposal Input Estimated Total Depth of Well 3900 ft.
8. Depth of deepest fresh water well within one mile of location 70 ft. If none exists, write NONE.
9. Ground elevation at location is approx. FLAT ft. higher or _____ ft. lower than ground elevation at water well.
10. Depth of the deepest municipal water well within three miles of location 50 ft. If none exists, write NONE
11. Operator states that he will set surface pipe at least 25 ft. below all Tertiary or unconsolidated deposits and, taking into consideration differences in ground elevations, that the minimum depth necessary, to the best of his knowledge and belief, to protect all fresh water zones is 225 ft. and operator agrees to set surface pipe at this location to a depth of not less than 225 ft. Alternate 1 Alternate 2 .

REMARKS:

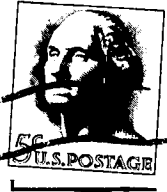
RAINS & WILLIAMSON OIL CO.

Signature of Operator



Wilson Rains, Partner





**State Corporation Commission of Kansas
Conservation Division
500 Insurance Building
212 North Market
Wichita, Kansas 67202**

(IF PREFERRED, MAIL IN ENVELOPE)

RECEIVED
STATE CORPORATION COMMISSION

JUL 1 1964
7-1-64
CONSERVATION DIVISION
Wichita, Kansas