

Notice: Fill out COMPLETELY and return to Conservation Division at the address below within 60 days from plugging date.

KANSAS CORPORATION COMMISSION  
OIL & GAS CONSERVATION DIVISION  
**WELL PLUGGING RECORD**  
K.A.R. 82-3-117

Form CP-4  
March 2009  
Type or Print on this Form  
Form must be Signed  
All blanks must be Filled

OPERATOR: License #: 7030  
Name: John Roy Evans Oil Company, LLC  
Address 1: P.O. Box 385  
Address 2: \_\_\_\_\_  
City: Clafin State: KS Zip: 67525 + 0385  
Contact Person: Gary Kirmer  
Phone: ( 620 ) 793-2026  
Type of Well: (Check one)  Oil Well  Gas Well  OG  D&A  Cathodic  
 Water Supply Well  Other: \_\_\_\_\_  SWD Permit #: \_\_\_\_\_  
 ENHR Permit #: \_\_\_\_\_  Gas Storage Permit #: \_\_\_\_\_  
Is ACO-1 filed?  Yes  No If not, is well log attached?  Yes  No  
Producing Formation(s): List All (if needed attach another sheet)  
Arbuckle Depth to Top: 3314 Bottom: 3318 T.D. \_\_\_\_\_  
Lansing/KC Depth to Top: 3100 Bottom: 3108 T.D. \_\_\_\_\_  
\_\_\_\_\_ Depth to Top: \_\_\_\_\_ Bottom: \_\_\_\_\_ T.D. \_\_\_\_\_

API No. 15 - 159-05919 0000  
Spot Description: SE NWSW  
SE ~~SW~~ NW, SW Sec. 19 Twp. 19 S. R. 10  East  West  
1980 1910 Feet from  \_\_\_\_\_ /  South Line of Section  
890 4190 Feet from  East /  \_\_\_\_\_ Line of Section  
Footages Calculated from Nearest Outside Section Corner:  
 NE  NW  SE  SW  
County: Rice  
Lease Name: Doll B Well #: 1  
Date Well Completed: 1/20/1957  
The plugging proposal was approved on: 10/27/2010 (Date)  
by: Jeff Klock (KCC District Agent's Name)  
Plugging Commenced: 10/27/2010  
Plugging Completed: 10/28/2010

Show depth and thickness of all water, oil and gas formations.

Oil, Gas or Water Records		Casing Record (Surface, Conductor & Production)			
Formation	Content	Casing	Size	Setting Depth	Pulled Out
Lansing/KC 3010-3251	oil/water/gas	surface	8 5/8"	190'	
Arbuckle 3314-3318	oil/water	production	5 1/2"	3314'	1441'

Describe in detail the manner in which the well is plugged, indicating where the mud fluid was placed and the method or methods used in introducing it into the hole. If cement or other plugs were used, state the character of same depth placed from (bottom), to (top) for each plug set.

10/27/2010 Sanded off perfs to 2950'. 5 sx cement on top of sand with glass bottom bailer.  
10/28/2010 Shot 5 1/2" csg off @ 1441'. Pulled to 1200'. Mixed 35 sx 60/40 poz, 4% gel @ 1200'.  
Mixed 35 sx 60/40 poz, 4% gel @ 900'. Mixed 105 sx 60/40 poz, 4% gel @ 250' and circulated cement to surface. Pulled rest of csg and topped off well with 10 sx cement.

Plugging Contractor License #: 6901 Name: D.S. & W. Well Servicing, Inc.  
Address 1: 1822 24th Street Address 2: \_\_\_\_\_  
City: Great Bend State: KS Zip: 67530 + \_\_\_\_\_  
Phone: ( 620 ) 793-5838  
Name of Party Responsible for Plugging Fees: John Roy Evans Oil Company, LLC  
State of Kansas County, Barton, ss.  
Gary Kirmer  Employee of Operator or  Operator on above-described well,  
(Print Name)

being first duly sworn on oath, says: That I have knowledge of the facts statements, and matters herein contained, and the log of the above-described well is as filed, and the same are true and correct, so help me God.

Signature: Gary Kirmer

RECEIVED  
DEC 14 2010  
KCC WICHITA  
Dr

# Radioactivity Log

COMPANY: BENNETT & ROBERTS OIL & GAS

WELL: DOLL B #1  
FIELD: CHASE SILICA  
LOCATION: 19-19-10W  
COUNTY: RICE  
STATE: KANS.

COMPANY: *BENNETT & ROBERTS OIL & GAS*

Well Location

WELL: *DOLL B #1*

*2986  
1775  
1211 B.L.*

FIELD: *CHASE SILICA*

*3010  
1775  
1211 K.C.*

LOCATION: *CENTER OF E<sup>1</sup> - NW - SW*

COUNTY: *RICE* STATE: *KANS.*

LOG ZERO: *6' A.B.H.*

ELEV. *1775*

DRLG. ZERO: *R.B.*

ELEV. *1775*

PERM. DATUM: *B.H.*

ELEV. *1769*

TYPE OF LOG	<i>GAMMA-RAY N/GAMMA</i>	
RUN NO.	<i>1 N.W. 1 N.W.</i>	
DATE	<i>1-23-57</i>	
TOTAL DEPTH (DRILLER)	<i>3315 1/2</i>	<i>3315 1/2</i>
EFFECTIVE DEPTH (DRILLER)	<i>3318</i>	<i>3318</i>
TOP OF LOGGED INTERVAL	<i>2850</i>	<i>2850</i>
BOTTOM OF LOGGED INTERVAL	<i>3305 1/2</i>	<i>3317 1/2</i>
TYPE OF FLUID IN HOLE	<i>OIL &amp; WATER</i>	
FLUID LEVEL	<i>1515 APP</i>	
MAXIMUM RECORDED TEMP.		
SOURCE STRENGTH & TYPE	<i>S/D A3</i>	
SOURCE SPACING - IN.	<i>13.5</i>	
LENGTH OF MEAS. DEVICE - IN.	<i>4</i>	<i>4</i>
O.D. OF INSTRUMENT - IN.	<i>3 3/8</i>	
TIME CONSTANT - SECONDS	<i>20</i>	<i>1.5</i>
LOGGING SPEED FT./MIN.	<i>25</i>	<i>25</i>
STATISTICAL VARIATION - IN.	<i>RECORDED</i>	
SENSITIVITY REFERENCE	<i>274 D.G.</i>	<i>2368</i>
DETECTOR CLASS	<i>SCINT</i>	<i>SCINT</i>
DETECTOR TYPE	<i>D4G</i>	<i>D4N</i>
RECORDED BY	<i>H. USHIG</i>	
WITNESSED BY	<i>BUD ROBERTS</i>	

**WELL RECORD**

RUN	BIT SIZE	CASING	WT.-LB.	FROM WELL RECORD	FROM LOG
<i>1</i>	<i>12 1/2</i>	<i>8 5/8</i>	<i>24</i>	<i>SURF TO 190</i>	<i>40' TO 5 1/2' 10W</i>
<i>1</i>	<i>7 7/8</i>	<i>5 1/2</i>	<i>14</i>	<i>SURF TO 3314</i>	

REMARKS OR OTHER DATA

C.W.S.T. T.P. 3318  
L.W. T.P. 3316 1/2  
Present to 3317 1/2

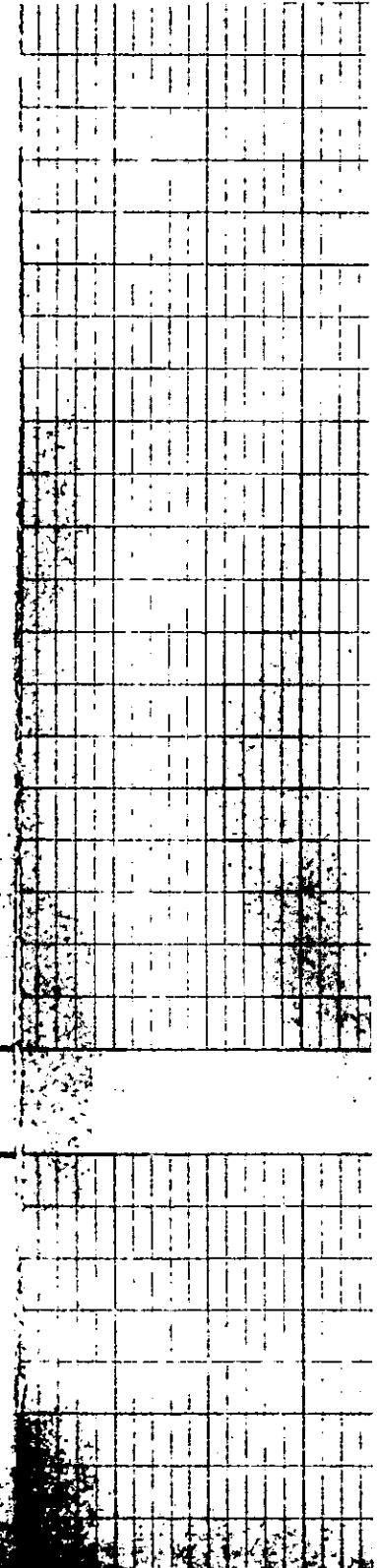
FIELD PRINT RECEIVED

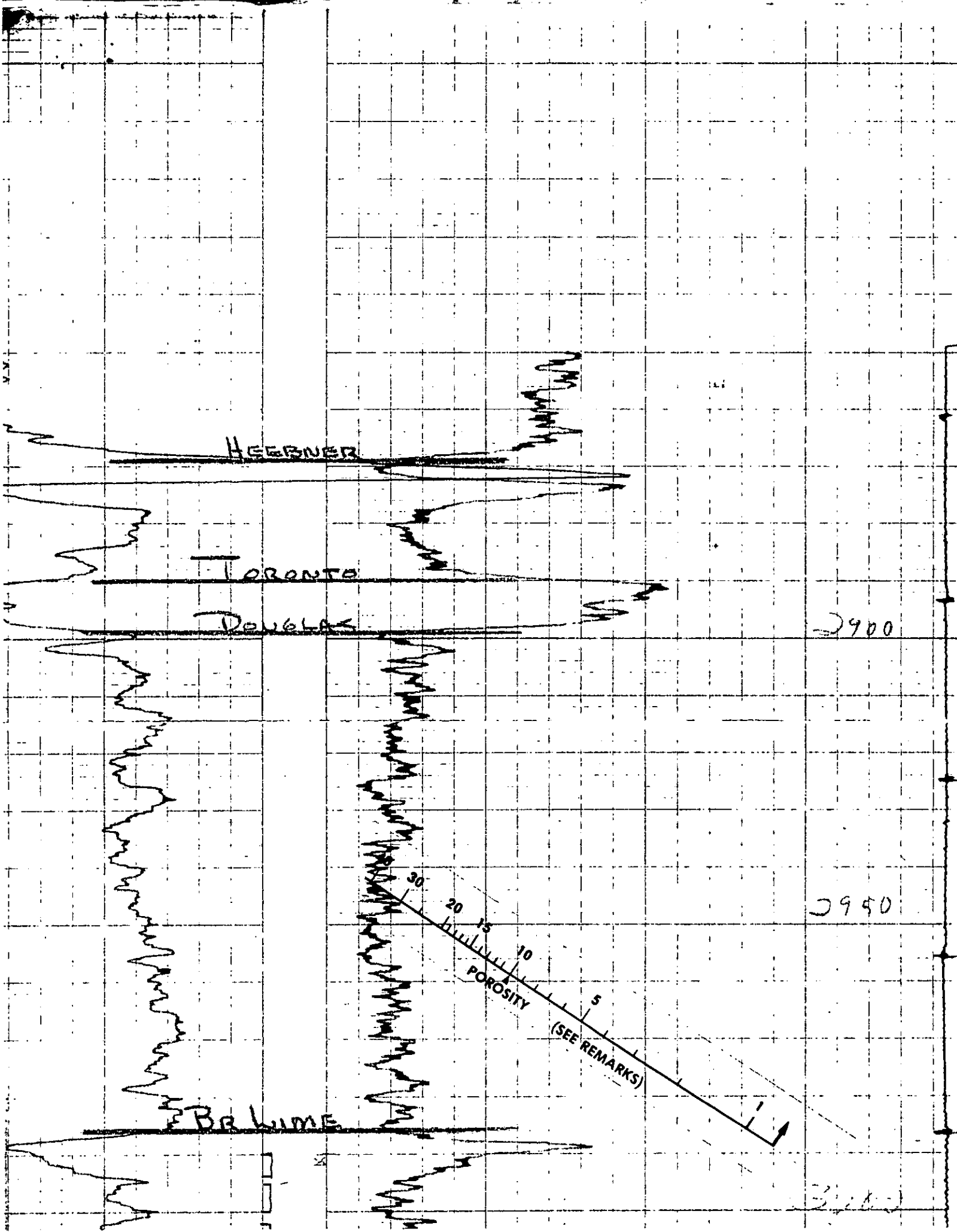
NEUTRON  
DEC 14 2010  
KCC WICHITA

RADIATION INTENSITY INCREASES

GAMMA RAY

RADIATION INTENSITY INCREASES





HEEBNER

TORONTO

DOUGLAS

BR LIME

30  
20  
15  
10  
5  
POROSITY  
(SEE REMARKS)

2900

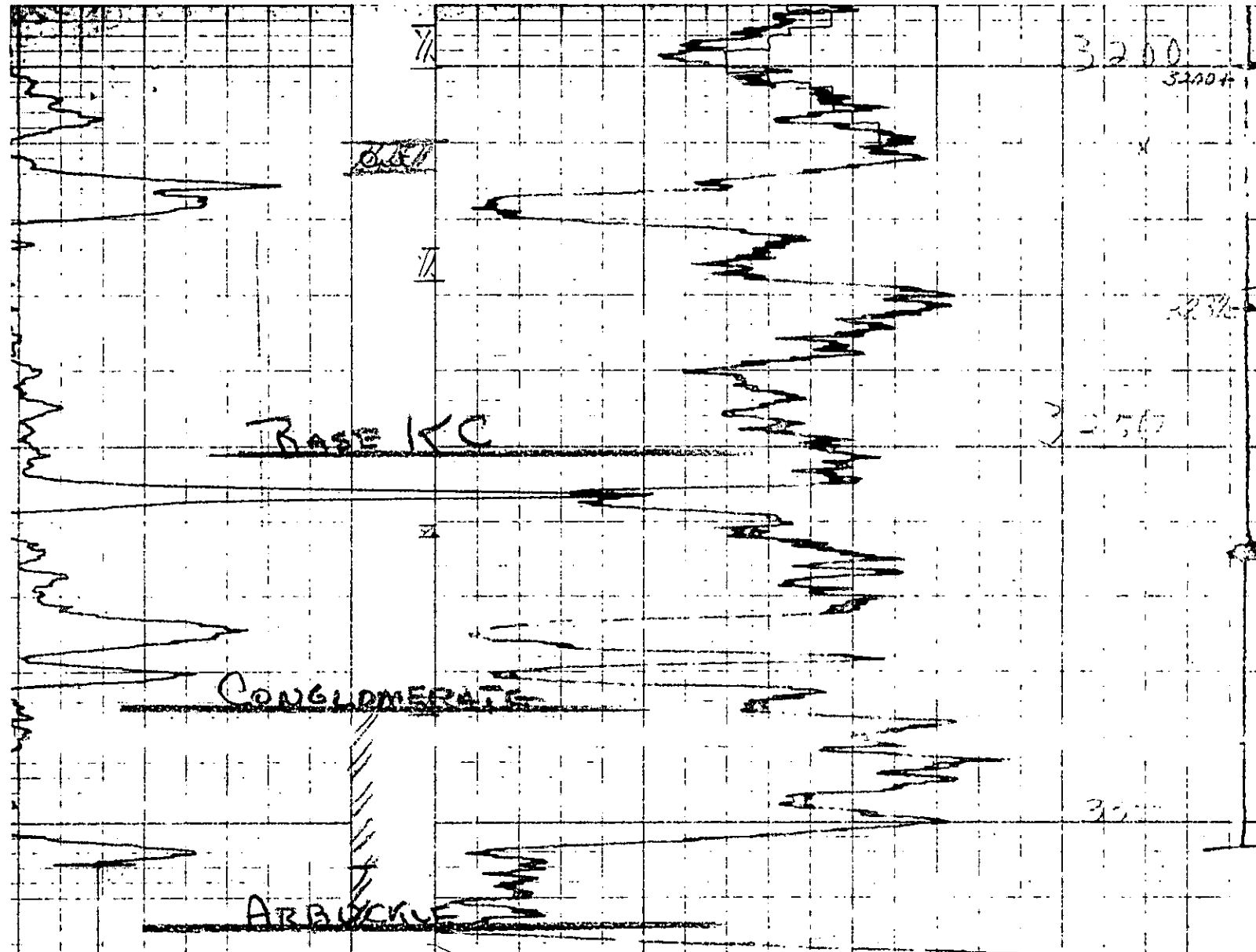
2950

3100

M.M.

REPRODUCED FROM THE ORIGINAL RECORD





Drilled to 3318  
 AT 500.2 SWB 16.7 BG + 230 BW - 30H res

72.33175

DO 404 XI  
 AC - 3.0  
 1 W. 270  
 5 AC - 120

DO 5155 XI  
 7.2 1.5  
 13 W. 270  
 180 AC - 120