

TATE OF KANSAS
TATE CORPORATION COMMISSION
30 S. Market, Room 2078
Wichita, KS 67202

WELL PLUGGING RECORD
K.A.R.-82-3-117

API NUMBER 15-071-20542 ²⁰⁵⁴²

LEASE NAME Bounds A

WELL NUMBER 1

TYPE OR PRINT
NOTICE: Fill out completely
and return to Cons. Div.
office within 30 days.

4620 Ft. from S Section Line

4620 Ft. from E Section Line

LEASE OPERATOR 146 B Oil Co. c/o Sharp Eng.

SEC. 23 TWP. 18 SRGE. 43 (E) or (W)

ADDRESS PO Box 122 Andover, Ks. 67002

COUNTY Greeley

PHONE (316) 262-3596 OPERATORS LICENSE NO. 30605

Date Well Completed 10-91

Character of Well Good

Plugging Commenced 3-13-97

(Oil, Gas, O&A, SWD, Input, Water Supply Well)

Plugging Completed 3-13-97

The plugging proposal was approved on 11-15-96 (date)

by Steve Durant (KCC District Agent's Name).

Is ACO-1 filed? yes if not, is well log attached? _____

Producing Formation Morrow Depth to Top 5125 Bottom 5220

RECEIVED
KANSAS CORPORATION COMMISSION
3-17-97
MAR 17 1997

Show depth and thickness of all water, oil and gas formations.

OIL, GAS OR WATER RECORDS | CASING RECORD

Formation	Content	From	To	Size	Put In	Pulled out
Morrow	Oil	0	354	8 5/8"	354	CONSERVATION DIVISION
		0	5219	5 1/2"	5219	0 WICHITA, KS

Describe in detail the manner in which the well was plugged, indicating where the mud fluid was placed and the method or methods used in introducing it into the hole. If cement or other plug were used, state the character of same and depth placed, from _____ feet to _____ feet each set.
Well was squeezed several times prior to plugging (Schematic Attached)
Ran tbg. to 900' Pump 20 SX 65/35 Posma 67' gel. Pull tbg. to 62' circ.
Cement to surface. Pull tbg. Top off 659. w/ cement. Pump 10 SX down
8 5/8" - 5 1/2" Annulus. Pressured to 300 psi. P&A complete.

Name of Plugging Contractor Cheyenne Well Service License No. 6454

Address PO Box 384 Ness City, Ks. 67560-0384

NAME OF PARTY RESPONSIBLE FOR PLUGGING FEES: Sharp Engineering

STATE OF Kansas COUNTY OF Sedgwick, ss.

Larry Sharp (Employee of Operator) or (Operator) of above-described well, being first duly sworn on oath, says: That I have knowledge of the facts statements, and matters herein contained and the log of the above-described well as filed the the same are true and correct, so help me God.

(Signature) Larry Sharp

(Address) PO Box 122 Andover Ks. 67002

SUBSCRIBED AND SWORN TO before me this 17th day of March, 19 97

Jamie L. McCabe
Notary Public

JAMIE L. MCCABE
Notary Public - State of Kansas
My Appt. Expires 5-26-99

P.O. Box 2865
pa, Texas 79066-2865
800-749-5795
FAX (806) 669-1020



15-071-20542-0000
P.O. Box 922
Ulysses, Kansas 67880-0922
800-634-0012
FAX (316) 356-3041

Company HGB Oil Corp. Lease Bounds A Well # 1

Company Man _____ Date _____ County Greeley State KS

NW 4 23-18S-43W

cem. ret

1410'

Cem. 8 5/8" - 5 1/2" annulus w/ 500 sx.
CBL. cem. c 240'

PF. Dakota 1473' Sq. 350 sx 1500 psi

TC 2430'

cem. ret.

2510'

PF. 2540' - Cem. w/ 100 sx - Press. to 1500 psi
CBL. TC - 2430'

FO. Tool c 2643' Cem. w/ 925 sx

CBL TC - 2550'

CIBP

2700'

TC - 4640'

Mo. p ts.

5126-29'

RECEIVED
KANSAS CORPORATION COMMISSION

MAR 17 1997

CONSERVATION DIVISION
WICHITA, KS

PBTD

5172'

5 1/2" c 5219'

REMARKS: _____

FISHING AND RENTAL TOOLS
POWER SWIVELS AND PUMPS
FOAM AIR UNITS
COILED TUBING W/ AIR UNIT
24 HOUR SERVICE

"EXPERIENCED FISHERMEN"

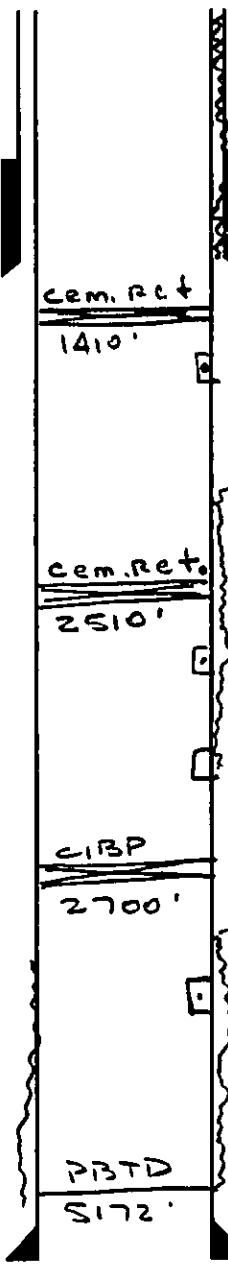
P.O. Box 2865
Pampa, Texas 79066-2865
800-749-5795
FAX (806) 669-1020



15-071-20542-0000
P.O. Box 922
Ulysses, Kansas 67880-0922
800-634-0012
FAX (316) 356-3041

Company HGB Oil Corp. Lease Bounds A Well # 1

Company Man _____ Date _____ County Greeley State KS



NW 4 23-18S-43W

Cem. 8 5/8" - 5 1/2" annulus w/ 500 sx.
CBL. cem. c 240'

Pf. Dakota 1473' Sq. 350 sx 1500 psi

TC 2430'

Pf. 2540' - Cem. w/ 100 sx - Press. to 1500 psi
CBL. TC - 2430'

FO Tool e 2643' Cem. w/ 925 sx
CBL TC - 2550'

TC - 4640'

Mo. pfs.
5126-29'

5 1/2" e 5219'

REMARKS: _____

RECEIVED
KANSAS CORPORATION COMMISSION

NOV 15 1996

CONSERVATION DIVISION
WICHITA, KS

FISHING AND RENTAL TOOLS
POWER SWIVELS AND PUMPS
FOAM AIR UNITS
COILED TUBING W/ AIR UNIT
24 HOUR SERVICE

"EXPERIENCED FISHERMEN"

CARR SHARP

F-ZAL RE-ZI

Schlumberger

BOREHOLE COMPENSATED SONIC

GREELEY WILDCAT NW/NW BOUNDS A#1 HGB OIL CO./E.C. SCHUETT/ARVIL FLIPPIN	COMPANY		HGB OIL CO./E.C. SCHUETT/ARVIL FLIPPIN		
	WELL		BOUNDS A#1		
FIELD		WILDCAT			
COUNTY		GREELEY		STATE KANSAS	
LOCATION NW/NW 330'FWL & 660'FNL	Other Services: DIL FDC CNL BHC GR LOGNET				
	API SERIAL NO.	SECT.	TWP.	RANGE	
1507120542	23	18S	43W		
Permanent Datum	GROUND LEVEL	Elev.	3897.0 F	Elev.: K.B.3904.0 F	
Log Measured From	KELLY BUSHING	7.0 F	above Perm. Datum	D.F.3903.0 F	
Drilling Measured From	KELLY BUSHING			G.L.3897.0 F	
Date	24-JUL-1991		RECEIVED KANSAS CORPORATION COMMISSION		
Run No.	ONE				
Depth Driller	5220.0 F		NOV 15 1996		
Depth Logger (SchL)	5218.0 F				
Btm. Log Interval	5203.0 F				
Top Log Interval	4160.0 F		CONSERVATION DIVISION WICHITA, KS		
Casing-Driller	8 5/8-20	@354.0 F			
Casing-Logger	355.0 F				
Bit Size	7 7/8		TIGHT HOLE		
Type Fluid in Hole	CHEMICAL				
Dens.	Visc.	9.50 LB/G			50.0 S
pH	Fld. Loss	9.0			8.4 C3
Source of Sample	MUD PIT				
Rm @ Meas. Temp.	.920 OHMM	@ 85.0 DEGF			@
Rmf @ Meas. Temp.	.690 OHMM	@ 85.0 DEGF			@
Rmc @ Meas. Temp.	1.020 OHMM	@ 85.0 DEGF			@
Source: Rmf	Rmc	PRESS			CALC
Rm @ BHT	.596 OHMM	@ 135. DEGF			@
TIME	Circulation Ended	1345 24-JUL			
	Logger on Bottom	SEE LOGS			
Max. Rec. Temp.	135. DEGF				
Equip.	Location	8220	FT. MORGAN, COL.		
Recorded By	JIM MARTIN				
Witnessed By	DON MCKENNA				

The well name, location and borehole reference data were furnished by the customer.