

TYPE OR PRINT

NOTICE OF INTENTION TO DRILL

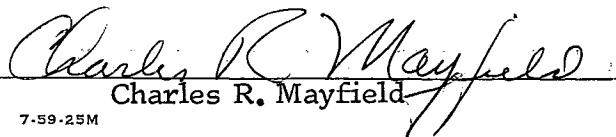
RULE 82-2-311

TO BE FILED WITH THE STATE CORPORATION COMMISSION PRIOR TO COMMENCEMENT OF WELL

1. Operator Mayfield-Smith Drlg., Inc. Address 227 Union Center Bldg., Wichita, Kansas
2. Lease name Schumacher Well No. 1 County Ellis
3. Well Location NW SE NW Sec. 20 Township 14S Range 18W
4. Well to be drilled 330 ft. from nearest lease line.
5. Drilling Contractor Mayfield-Smith Drlg., Inc. Address 227 Union Center Bldg., Wichita, Kans.
6. Type of equipment: Rotary Cable Tool Approx. date operation to begin 4-9-62 ~~195~~
7. Well to be drilled for Oil Gas Disposal Input Estimated Total Depth of Well 3725 ft.
8. Depth of deepest fresh water well within one mile of location None ft. If none exists, write NONE.
9. Ground elevation at location is approx. - - ft. higher or ± ± ft. lower than ground elevation at water well.
10. Depth of the deepest municipal water well within three miles of location None ft. If none exists, write NONE.
11. Operator states that he will set surface pipe at least 25 ft. below all Tertiary or unconsolidated deposits and, taking into consideration differences in ground elevations, that the minimum depth necessary, to the best of his knowledge and belief, to protect all fresh water zones is 175' ft. and operator agrees to set surface pipe at this location to a depth of not less than 175 ft. Alternate 1 Alternate 2 .

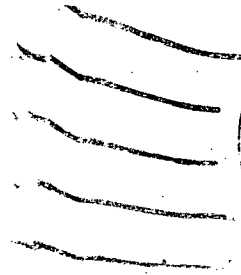
REMARKS:

Signature of Operator



Charles R. Mayfield





**State Corporation Commission of Kansas
Conservation Division
500 Insurance Building
212 North Market
Wichita 2, Kansas**

RECEIVED
STATE CORPORATION COMMISSION
APR 10 1962
04-10-62
CONSERVATION DIVISION
Wichita, Kansas

---(IF PREFERRED, MAIL IN ENVELOPE)