

Operator Name DNR Oil & Gas Inc. Lease Name OFL Well # 5-31

Sec. 21 Twp. 15S Rge. 4E
 NEET
 WEST

Locality Wallace

INSTRUCTIONS: Show important tops and base of formations penetrated. Detail all cores. Report all drill stem tests giving interval tested, time tool open and closed, flowing and shut-in pressures, whether shut-in pressure reached static level, hydrostatic pressures, bottom hole temperature, fluid recovery, and flow rates if gas to surface during test. Attach extra sheet if more space is needed. Attach copy of log.

Drill Stem Tests Taken (Attach Additional Sheets.)	<input checked="" type="checkbox"/> Yes <input type="checkbox"/> No	<input checked="" type="checkbox"/> Log Formation (Top), Depth and Datums <input type="checkbox"/> Sample <table border="1"> <thead> <tr> <th>Name</th> <th>Top</th> <th>Datum</th> </tr> </thead> <tbody> <tr> <td>B/Anhydrite</td> <td>2763</td> <td>+1044</td> </tr> <tr> <td>Topeka</td> <td>3946</td> <td>- 139</td> </tr> <tr> <td>Heebner</td> <td>4101</td> <td>- 244</td> </tr> <tr> <td>Lansing</td> <td>4207</td> <td>- 400</td> </tr> <tr> <td>Marmaton</td> <td>4516</td> <td>- 709</td> </tr> <tr> <td>Cherokee</td> <td>4716</td> <td>- 909</td> </tr> <tr> <td>Morrow Shale</td> <td>4959</td> <td>-1152</td> </tr> </tbody> </table>	Name	Top	Datum	B/Anhydrite	2763	+1044	Topeka	3946	- 139	Heebner	4101	- 244	Lansing	4207	- 400	Marmaton	4516	- 709	Cherokee	4716	- 909	Morrow Shale	4959	-1152
Name	Top		Datum																							
B/Anhydrite	2763		+1044																							
Topeka	3946		- 139																							
Heebner	4101	- 244																								
Lansing	4207	- 400																								
Marmaton	4516	- 709																								
Cherokee	4716	- 909																								
Morrow Shale	4959	-1152																								
Samples Sent to Geological Survey	<input checked="" type="checkbox"/> Yes <input type="checkbox"/> No																									
Cores Taken	<input type="checkbox"/> Yes <input checked="" type="checkbox"/> No																									
Electric Log Run (Submit Copy.)	<input checked="" type="checkbox"/> Yes <input type="checkbox"/> No																									
List All E.Logs Run:																										
Dual Induction																										
Compensated Neutron Density																										
Correlation Cement Bond																										

CASING RECORD <input checked="" type="checkbox"/> New <input checked="" type="checkbox"/> Used							
Report all strings set-conductor, surface, intermediate, production, etc.							
Purpose of String	Size Hole Drilled	Size Casing Set (In O.D.)	Weight Lbs./Ft.	Setting Depth	Type of Cement	# Sacks Used	Type and Percent Additives
Surface	12 1/4"	8 5/8"	23	386	60/40 Poz	260	2% Gel, 3% CaCl.
Production	7 7/8"	5 1/2"	15.5	5174	Standard	150	5% Calseal, 18% Salt .75% Halad 322 5#/sax Gilsonite

ADDITIONAL CEMENTING/SQUEEZE RECORD				
Purpose:	Depth Top Bottom	Type of Cement	#Sacks Used	Type and Percent Additives
Perforate				
Protect Casing				
Plug Back TD	0-1949	Midcon II	225	3% CaCl, 3/8#/Sax flocele
Plug Off Zone				

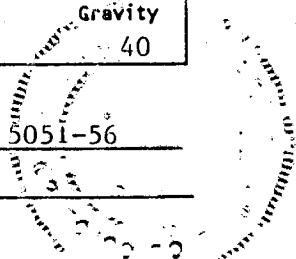
Shots Per Foot	PERFORATION RECORD - Bridge Plugs Set/Type Specify Footage of Each Interval Perforated		Acid, Fracture, Shot, Cement Squeeze Record (Amount and Kind of Material Used) Depth	
	4	5051-56		

TUBING RECORD Size 2 7/8" Set At 5117 Packer At _____ Liner Run Yes No

Date of First, Resumed Production, SWD or Inj. 10-25-97 Producing Method Flowing Pumping Gas Lift Other (Explain)

Estimated Production Per 24 Hours	Oil Bbls.	Gas Mcf	Water Bbls.	Gas-Oil Ratio	Gravity
	135	30	0		40

Disposition of Gas: METHOD OF COMPLETION Vented Sold Used on Lease Open Hole Perf. Dually Comp. Commingled Other (Specify) _____ Production Interval 5051-56





JOB SUMMARY 4239-1

REGION North America	NWA/COUNTRY MED CONTINENT	TICKET # 197165	TICKET DATE 9-26-97
MBU ID / EMP # HAB01 89377	EMPLOYEE NAME WAYNE WILSON	BDA / STATE KANSAS	COUNTY WALLACE
LOCATION HAYS, KS	COMPANY DNR OIL & GAS	PSL DEPARTMENT CEMENT	CUSTOMER REP / PHONE CHARLES DAVIS
TICKET AMOUNT 19595.03	WELL TYPE 01	API / UWI # 15199202530000	JOB PURPOSE CODE 035
WELL LOCATION S / WESKAW, KS	DEPARTMENT CEMENT	LEASE / WELL # NICKELSON 3-31	
SEC / TWP / RNG 31 - 15s - 41w			

HES EMP NAME/EMP#/(EXPOSURE HOURS) HRS	HES EMP NAME/EMP#/(EXPOSURE HOURS) HRS	HES EMP NAME/EMP#/(EXPOSURE HOURS) HRS	HES EMP NAME/EMP#/(EXPOSURE HOURS) HRS
WILSON 89377			
FOLK 30763			
LEZKER 16872			

ORIGINAL

HES UNIT NUMBERS	R/T MILES	HES UNIT NUMBERS	R/T MILES	HES UNIT NUMBERS	R/T MILES	HES UNIT NUMBERS	R/T MILES
420995	324						
53293m	324						
3859-7613	324						

Form Name _____ Type: _____
 Form Thickness _____ From _____ To _____
 Packer Type _____ Set At _____
 Bottom Hole Temp. _____ Pressure _____
 Misc. Data _____ Total Depth _____

TOOLS AND ACCESSORIES

TYPE AND SIZE	QTY	MAKE
Float Collar FALUP	1	10WCO
Float Shoe	1	"
Guide Shoe		
Centralizers CUSTOMER PROVIDED		
Bottom Plug		
Top Plug L.D. RUB SET	1	"
Head PC		
Packer ROTATING HEAD	1	"
Other ISJ TOOL	1	"

MATERIALS

Treat Fluid	Density	Lb/Gal
Disp. Fluid	Density	Lb/Gal
Prop. Type	Size	Lb.
Acid Type	Gal.	%
Surfactant	Gal.	In
NE Agent	Gal.	In
Fluid Loss	Gal/Lb	In
Gelling Agent	Gal/Lb	In
Fric. Red.	Gal/Lb	In
Breaker	Gal/Lb	In
Blocking Agent	Gal/Lb	
Perfpac Balls	Qty.	
Other		
Other		
Other		

DATE	CALLED OUT	ON LOCATION	JOB STARTED	JOB COMPLETED
	9-25	9-25	9-26	9-26
TIME	1030 CT	1630 CT	0830 MT	1700 CT

WELL DATA

	NEW/USED	WEIGHT	SIZE	FROM	TO	MAX ALLOW
Casing	U	15.5	5 1/2	KB	5176	
Liner						
Liner						
Tbg/D.P.						
Tbg/D.P.						
Open Hole			7 7/8	5176	5180	SHOTS/FT.
Perforations						
Perforations						
Perforations						

HOURS ON LOCATION		OPERATING HOURS		DESCRIPTION OF JOB
DATE	HOURS	DATE	HOURS	
9-25	1	9-25	0	WANT TO CUT CASING CUT SIZE CASING
9-26	1	9-26	3	
TOTAL		TOTAL		

HYDRAULIC HORSEPOWER

ORDERED _____ Avail. _____ Used _____

AVERAGE RATES IN BPM

TREATED _____ Disp. _____ Overall _____

CEMENT LEFT IN PIPE

FEET 40.84' Reason _____

CEMENT DATA

STAGE	SACKS	CEMENT	BULK/SKS	ADDITIVES	YIELD	LBS/GAL
1	130	STANDARD	B	5% KCL, 1/10% CFR-3, 3/10% HALAB-344	1.20	13.6
2	190	MEDCON 2	B	3% OIL, 3/8# FIBRE P/5K	3.22	11.1
	35	"	"	"	2.59	13.8

Circulating _____ Displacement _____ Preflush: Gal (BBI) 20/12 Type _____ / MODIFIED

Breakdown _____ Maximum _____ Load & Bkdn: Gal - BBI Pad: BBI - Gal

Average _____ Frac Gradient _____ Treatment Gal - BBI Disp: BBI - Gal 122.2

Shut In: Instant _____ 5 Min _____ 15 Min _____ Cement Slurr Gal (BBI) 32.1 (1") 121.5 (2")

Total Volume Gal - BBI _____

Frac Ring #1 _____ Frac Ring #2 _____ Frac Ring #3 _____ Frac Ring #4 _____

THE INFORMATION STATED HEREIN IS CORRECT

CUSTOMER'S REPRESENTATIVE SIGNATURE _____



JOB LOG 4239-5

TICKET #	197165	TICKET DATE	9-26-97
BDA / STATE	KANSAS	COUNTY	WALLACE
PSL DEPARTMENT	CEMENT		
CUSTOMER REP / PHONE	CHARLES DAVIS		
API / UWI #	14199201530000		
JOB PURPOSE CODE	035		

REGION	North America	NWA/COUNTRY	MID-CONTINENT WEST
MBU ID / EMP #	89377	EMPLOYEE NAME	WAYNE WILSON
LOCATION		COMPANY	DAIR OIL GAS
TICKET AMOUNT	19595.03	WELL TYPE	01
WELL LOCATION		DEPARTMENT	CEMENT
LEASE WELL		SEC / TWP / RANG	035

HES EMP NAME/EMP#/(EXPOSURE HOURS) HRS	HES EMP NAME/EMP#/(EXPOSURE HOURS) HRS	HES EMP NAME/EMP#/(EXPOSURE HOURS) HRS	HES EMP NAME/EMP#/(EXPOSURE HOURS) HRS
WAYNE WILSON 89377			
PAUL			
LEWIS			

ORIGINAL

CHART NO.	TIME	RATE (BPM)	VOLUME (BBLS)	PUMPS		PRESS. (psig)		JOB DESCRIPTION / REMARKS
				T	C	Top	Csg	
	1030	CT						DRILLED OUT
	1030	CT						ON LOCATION - DRY USE JOB PROCEDURE
	0500	CT						START CASING IN WELL
	0830	CT						DROP BALL - CIRCULATE - ROTATE CASING
1	0843	M/S	20		✓	250		PUMP - CRYFIX II - PREFLUSH
	0847	S	12		✓	250		PUMP - MUDFLUSH
	0855	6	32.1		✓	200		MAX CEMENT
	0903							WASH OUT PUMP - LINES
	0904							RELEASE 1ST STAGE PLUG - LATCH DOWN
	0907	6 1/2	0		✓	550		DISPLACE PLUG 75 H2O - 47.2 mud
								SLIP DOWN ROTATING - WHEN STARTED PREFLUSH @ 0840
	0928	4	122.2			1500		LAND PLUG - PSZ UP - LATCH DOWN
	0931							RELEASE PST - HELD
	1000							
	0935							DROP DV OPENING PLUG - LOAD 2ND STAGE CLOSING PLUG
	1000				✓	600		OPEN DV TOOL - CIRCULATE 4 HRS - MUD PUMP
								DUMP CEMENT ON GROUND TO PLUG PATHWAY - MUDSUCKER
1	1343	7	121.5		✓	200		MAX CEMENT
	1400	MT						WASH OUT PUMP - LINES
	1401							RELEASE CLOSING PLUG
	1405	5	0		✓	400		DISPLACE PLUG
	1415	2	46.2			1650		PLUG DOWN - PSZ UP CLOSE DV TOOL
	1418					1650		RELEASE PST - HELD
								CIRCULATED 30 SYS CEMENT TO DST. ✓
								WASH-UP
								RACK-UP
	1700	CT						JOB COMPLETE
								STATE CORPORATION COMMISSION
								JAN 26 1998
								THANK YOU
								WAYNE, DUSTY, LYLE
								START WORKING DOWN D.P. @ 2200 HRS CT
								CALL TRACKS OUT 2300 HRS 9-25-97

ALLIED CEMENTING CO., INC.

8535

Federal Tax I.D.#

REMIT TO P.O. BOX 31
RUSSELL, KANSAS 67665

SERVICE POINT:

DATE <u>9-16-97</u>	SEC. <u>31</u>	TWP. <u>15S</u>	RANGE <u>41W</u>	CALLED OUT	ON LOCATION <u>10:30 AM</u>	JOB START <u>1:00 PM</u>	JOB FINISH <u>1:30 PM</u>
LEASE <u>NE NELSON</u>	WELL # <u>3-31</u>	LOCATION <u>SPARROW SPRINGS 9W-12S 3/4W 1/4N</u>			COUNTY <u>WALLACE</u>	STATE <u>KS</u>	
OLD OR <u>NEW</u> (Circle one)							

CONTRACTOR MURFIN DRILLING RTG #14

TYPE OF JOB SURFACE

HOLE SIZE 12 1/4" T.D. 352'

CASING SIZE 8 7/8" DEPTH 352'

TUBING SIZE DEPTH

DRILL PIPE DEPTH

TOOL DEPTH

PRES. MAX MINIMUM

MEAS. LINE SHOE JOINT 40.30'

CEMENT LEFT IN CSG.

PERFS.

DISPLACEMENT 19 3/4 BBL

OWNER SAITTE

CEMENT AMOUNT ORDERED 250 SKS 6 W40 P02 32CC 2865L

COMMON @

POZMIX @

GEL @

CHLORIDE @

HANDLING @

MILEAGE @

TOTAL

EQUIPMENT ORIGINAL

PUMP TRUCK CEMENTER TERRY

191 HELPER DEAN

BULK TRUCK DRIVER JEFF

218

BULK TRUCK DRIVER

REMARKS:

SERVICE

DEPTH OF JOB 352'

PUMP TRUCK CHARGE

EXTRA FOOTAGE 52' @

MILEAGE @

PLUG 8 7/8 SURFACE PLUG @

CEMENT ~~...~~ IN CELLAR.

THANK YOU

RECEIVED

STATE CORPORATION COMMISSION

CHARGE TO: DNR OIL & GAS

STREET 655 BROADWAY - SUITE 525

CITY Denver STATE CO ZIP 80203

JAN 26 1998

CONSTRUCTION DIVISION

FLOAT EQUIPMENT

8 5/8

1- BAFFLE PLATE @

1- CENTRALIZER @

TOTAL

To Allied Cementing Co., Inc.
You are hereby requested to rent cementing equipment and furnish cementer and helper to assist owner or contractor to do work as is listed. The above work was done to satisfaction and supervision of owner agent or contractor. I have read & understand the "TERMS AND CONDITIONS" listed on the reverse side.

SIGNATURE

PRINTED NAME

TAX

TOTAL CHARGE

DISCOUNT IF PAID IN 30 DAYS

Precision Core Analysis, Inc.

ORIGINAL

DNR Oil and Gas, Inc.

Nickelson #3-31

Sec. 31 T15S R41W

Wallace County, Kansas

15-199-20253

RECEIVED
STATE CORPORATION COMMISSION

JAN 26 1998

The analyses, interpretations, and/or opinions expressed in this report represent the best judgment of Precision Core Analysis, Inc. Precision Core Analysis, Inc. assumes no responsibility and makes no expressed warranties of any kind regarding the productivity, proper operation, or profitability of any action taken upon which this is used or relied upon.

Precision Core Analysis, Inc.

DNR Oil and Gas, Inc.
 Nickelson #3-31
 Sec. 31 T15S R41W
 Wallace County, Kansas

Job:
 Date:

9754
 01-Nov-97

Reference Number	Depth (ft)	Permeability		Helium Porosity (%)	Saturations		Grain Density (g/cc)	Sample Description
		Air (md)	Klink (md)		Water (%)	Oil (%)		
<i>Core No. 1 Morrow Fm. 4966.0'-4976.0' Rec. 2.5'/10.0'</i>								
1	4968.2	0.039	0.019	10.0	75.8	0.0	2.65	Sst vf gr sl qtz ovrghs sh lam
2	4971.6	0.141	0.084	10.6	73.0	0.0	2.67	Sst vf-f gr sh lam burr
3	4973.3	0.132	0.078	8.0	53.9	4.3	2.65	Sst vf-f gr qtz ovrghs sh lam
4	4974.8	0.450	0.316	9.9	26.8	8.2	2.65	Sst vf-f gr qtz ovrghs sh lam sl calc
<i>Core No. 2 Morrow Fm. 4976.0'-4994.0' Rec. 15.0'/18.0'</i>								
5	4976.8	52.1	44.2	13.2	30.1	14.0	2.65	Sst f-m gr sl calc qtz ovrghs
6	4977.4	25.3	20.8	14.1	23.6	7.9	2.66	Sst f-m gr sl calc qtz ovrghs sl lam
7	4978.4	59.6	51.1	12.3	15.4	8.2	2.65	Sst f-m gr sl calc qtz ovrghs sl lam
8	4979.4	75.6	65.1	14.8	24.8	11.5	2.66	Sst f-m gr sl calc qtz ovrghs sl lam
9	4980.5	229.	207.	17.6	33.1	13.2	2.66	Sst m gr v sl calc qtz ovrghs sl org mat
10	4981.7	280.	254.	16.5	24.7	9.0	2.67	Sst m gr v sl calc sl org mat
11	4982.6	247.	223.	16.2	25.0	8.3	2.71	Sst f-m gr sl calc qtz ovrghs sl lam
12	4983.6	424.	390.	16.0	18.0	8.1	2.68	Sst f-m gr sl calc qtz ovrghs sl lam
<i>Core No. 3 Morrow Fm. 5015.0'-5071.0' Rec. 30.0'/56.0'</i>								
13	5018.6	20.4	16.7	10.6	48.7	0.0	2.65	Sst f-m gr sl lam qtz ovrghs frac mic
14	5019.8	243.	219.	17.6	36.4	0.0	2.64	Sst m gr sl pyr sl lam qtz ovrghs
15	5020.5	315.	287.	18.6	34.4	0.0	2.64	Sst f-m gr qtz ovrghs
16	5021.4	828.	776.	21.6	48.5	0.0	2.64	Sst m gr qtz ovrghs sl mic
17	5022.6	1920.	1840.	19.6	43.5	0.0	2.64	Sst m-v crs gr qtz ovrghs md clas
17V	5022.8	1640.	1550.	20.1			2.64	Sst m-v crs gr qtz ovrghs lam
18	5023.4	1600.	1520.	19.3	41.3	0.0	2.65	Sst m gr qtz ovrghs
19	5024.4	1010.	949.	19.4	35.1	0.0	2.64	Sst m gr qtz ovrghs
19V	5024.1	130.	114.	19.3			2.64	Sst m gr qtz ovrghs lam
20	5025.4	757.	707.	18.2	30.2	0.0	2.64	Sst f-crs gr qtz ovrghs
20V	5025.8	202.	181.	17.6			2.64	Sst f-crs gr qtz ovrghs
21	5026.5	2270.	2170.	19.4	39.7	0.0	2.64	Sst m-crs gr qtz ovrghs
22	5027.8	1560.	1480.	19.3	29.7	0.0	2.64	Sst f-crs gr qtz ovrghs
22V	5027.9	87.8	75.9	17.5			2.64	Sst f-crs gr qtz ovrghs lam

Precision Core Analysis, Inc.

DNR Oil and Gas, Inc.
 Nickelson #3-31
 Sec. 31 T15S R41W
 Wallace County, Kansas

Job:
 Date:

9754
 01-Nov-97

Reference Number	Depth (ft)	Permeability		Helium Porosity (%)	Saturations		Grain Density (g/cc)	Sample Description
		Air (md)	Klink (md)		Water (%)	Oil (%)		
23	5054.6	739.	691.	17.2	38.0	11.5	2.66	Sst m-v crs gr qtz ovrghs sl mic
23V	5054.3	480.	443.	15.9			2.67	Sst m-v crs gr qtz ovrghs sl mic
24	5055.5	1750.	1660.	14.8	29.8	8.5	2.64	Sst crs-v crs gr
24V	5055.7	42.2	35.4	14.3			2.64	Sst crs-v crs gr
25	5056.5	1620.	1540.	21.0	30.0	8.9	2.65	Sst f-m gr qtz ovrghs mic
25V	5056.9	1230.	1170.	20.4			2.65	Sst f-m gr qtz ovrghs mic
26	5057.4	1530.	1450.	20.2	43.5	11.8	2.65	Sst m-crs gr qtz ovrghs
27	5058.6	1610.	1530.	19.8	42.8	9.9	2.65	Sst f-m gr qtz ovrghs mic
28	5059.3	1140.	1070.	17.7	39.3	8.0	2.67	Sst m gr qtz ovrghs
28V	5059.6	3130.	3010.	17.9			2.66	Sst m gr qtz ovrghs
29	5060.4	2680.	2580.	18.0	40.5	10.5	2.66	Sst f-m gr qtz ovrghs
29V	5060.7	14.8	12.0	12.7			2.65	Sst f-m gr qtz ovrghs lam
30	5061.4	406.	373.	14.5	37.1	3.7	2.68	Sst m-crs gr qtz ovrghs
31	5062.5	12700.	12400.	22.1	37.6	11.4	2.65	Sst m-crs gr qtz ovrghs
32	5063.4	15000.	14700.	21.6	38.8	7.5	2.65	Sst m-crs gr qtz ovrghs
32V	5063.9	14600.	14200.	22.3			2.64	Sst m-crs gr qtz ovrghs
33	5064.6	13400.	13100.	20.9	34.3	6.4	2.64	Sst m-crs gr qtz ovrghs
34	5065.8	5830.	5650.	19.2	33.9	5.4	2.65	Sst m-crs gr qtz ovrghs
35	5066.4	2380.	2280.	20.1	43.4	8.1	2.64	Sst m-crs gr qtz ovrghs

V = Vertical Core Plug

Precision Core Analysis, Inc.

DNR Oil and Gas, Inc.
 Nickelson #3-31
 Sec. 31 T15S R41W
 Wallace County, Kansas

Job: 9754
 Date: 01-Nov-97

Depth (ft)	Mini-Perm (md)	Depth (ft)	Mini-Perm (md)	Depth (ft)	Mini-Perm (md)
<i>Mini-Permeameter Analyses</i>					
4976.0	16.8	4978.9	43.2	4981.8	844
4976.1	24.7	4979.0	29.5	4981.9	110
4976.2	14.9	4979.1	103	4982.0	859
4976.3	69.9	4979.2	97.9	4982.1	964
4976.4	72.9	4979.3	138	4982.2	655
4976.5	61.4	4979.4	222	4982.3	615
4976.6	90.6	4979.5	242	4982.4	826
4976.7	113	4979.6	524	4982.5	835
4976.8	155	4979.7	248	4982.6	371
4976.9	178	4979.8	337	4982.7	426
4977.0	103	4979.9	287	4982.8	330
4977.1	86.7	4980.0	300	4982.9	673
4977.2	117	4980.1	738	4983.0	811
4977.3	68.6	4980.2	560	4983.1	608
4977.4	66.1	4980.3	833	4983.2	447
4977.5	52.1	4980.4	570	4983.3	328
4977.6	21.2	4980.5	499	4983.4	570
4977.7	8.29	4980.6	630	4983.5	705
4977.8	31.1	4980.7	452	4983.6	623
4977.9	32.1	4980.8	438	4983.7	1040
4978.0	117	4980.9	790	4983.8	593
4978.1	94.3	4981.0	581	4983.9	238
4978.2	112	4981.1	29.1		
4978.3	89.7	4981.2	314	5018.0	2.12
4978.4	93.1	4981.3	781	5018.1	0.55
4978.5	71.5	4981.4	289	5018.2	0.55
4978.6	83.7	4981.5	305	5018.3	0.43
4978.7	39.5	4981.6	645	5018.4	0.62
4978.8	75.5	4981.7	764	5018.5	0.93

Precision Core Analysis, Inc.

DNR Oil and Gas, Inc.
 Nickelson #3-31
 Sec. 31 T15S R41W
 Wallace County, Kansas

Job: 9754
 Date: 01-Nov-97

Depth (ft)	Mini-Perm (md)	Depth (ft)	Mini-Perm (md)	Depth (ft)	Mini-Perm (md)
<i>Mini-Permeameter Analyses</i>					
5018.6	1.40	5021.5	2875	5024.4	2002
5018.7	2.39	5021.6	2847	5024.5	2431
5018.8	38.8	5021.7	2888	5024.6	2110
5018.9	0	5021.8	2888	5024.7	1311
5019.0	0	5021.9	1458	5024.8	2193
5019.1	0	5022.0	3697	5024.9	3903
5019.2	246	5022.1	3810	5025.0	1932
5019.3	2.67	5022.2	4069	5025.1	1682
5019.4	26.0	5022.3	3182	5025.2	0
5019.5	18.5	5022.4	4907	5025.3	995
5019.6	15.3	5022.5	3459	5025.4	1103
5019.7	176	5022.6	5377	5025.5	1204
5019.8	531	5022.7	8445	5025.6	636
5019.9	887	5022.8	9062	5025.7	285
5020.0	922	5022.9	7915	5025.8	33.9
5020.1	1276	5023.0	8508	5025.9	1899
5020.2	1180	5023.1	9162	5026.0	2716
5020.3	362	5023.2	3697	5026.1	3478
5020.4	407	5023.3	5366	5026.2	3190
5020.5	369	5023.4	4559	5026.3	3703
5020.6	650	5023.5	4080	5026.4	5650
5020.7	1666	5023.6	3940	5026.5	4110
5020.8	1667	5023.7	1511	5026.6	4300
5020.9	1672	5023.8	1657	5026.7	4406
5021.0	1772	5023.9	1247	5026.8	3651
5021.1	2797	5024.0	2009	5026.9	6755
5021.2	2356	5024.1	3180	5027.0	5386
5021.3	2805	5024.2	2140	5027.1	4306
5021.4	3485	5024.3	1430	5027.2	4462

Precision Core Analysis, Inc.

DNR Oil and Gas, Inc.
 Nickelson #3-31
 Sec. 31 T15S R41W
 Wallace County, Kansas

Job: 9754
 Date: 01-Nov-97

Depth (ft)	Mini-Perm (md)	Depth (ft)	Mini-Perm (md)	Depth (ft)	Mini-Perm (md)
<i>Mini-Permeameter Analyses</i>					
5027.3	4812	5055.9	3633	5058.8	1786
5027.4	0	5056.0	1113	5058.9	2222
5027.5	0	5056.1	2005	5059.0	1169
5027.6	0	5056.2	2320	5059.1	999
5027.7	5030	5056.3	2277	5059.2	1053
5027.8	3809	5056.4	2235	5059.3	1625
5027.9	2955	5056.5	2424	5059.4	1868
5028.0	2101	5056.6	2122	5059.5	4500
5028.1	1246	5056.7	2271	5059.6	8800
		5056.8	2406	5059.7	3734
5054.0	1100	5056.9	2862	5059.8	5992
5054.1	1223	5057.0	2083	5059.9	6911
5054.2	1010	5057.1	2055	5060.0	5046
5054.3	1217	5057.2	1814	5060.1	12026
5054.4	1154	5057.3	2752	5060.2	5925
5054.5	1187	5057.4	2020	5060.3	22017
5054.6	1605	5057.5	2314	5060.4	6847
5054.7	1648	5057.6	2551	5060.5	5471
5054.8	1711	5057.7	2893	5060.6	1234
5054.9	2160	5057.8	2640	5060.7	2705
5055.0	1845	5057.9	2445	5060.8	537
5055.1	1173	5058.0	2449	5060.9	52.0
5055.2	154	5058.1	2050	5061.0	3338
5055.3	1164	5058.2	1834	5061.1	2083
5055.4	7347	5058.3	2965	5061.2	1714
5055.5	723	5058.4	2746	5061.3	1238
5055.6	220	5058.5	1866	5061.4	1196
5055.7	2601	5058.6	2445	5061.5	626
5055.8	4389	5058.7	2083	5061.6	287

Precision Core Analysis, Inc.

DNR Oil and Gas, Inc.
 Nickelson #3-31
 Sec. 31 T15S R41W
 Wallace County, Kansas

Job: 9754
 Date: 01-Nov-97

Depth (ft)	Mini-Perm (md)	Depth (ft)	Mini-Perm (md)	Depth (ft)	Mini-Perm (md)
<i>Mini-Permeameter Analyses</i>					
5061.7	899	5064.6	4000		
5061.8	7295	5064.7	5870		
5061.9	3750	5064.8	5861		
5062.0	3765	5064.9	5870		
5062.1	3762	5065.0	5895		
5062.2	5674	5065.1	5875		
5062.3	5655	5065.2	5850		
5062.4	5707	5065.3	11750		
5062.5	11222	5065.4	11763		
5062.6	11240	5065.5	1441		
5062.7	11105	5065.6	2933		
5062.8	11200	5065.7	2931		
5062.9	5504	5065.8	11740		
5063.0	11150	5065.9	11705		
5063.1	11166	5066.0	3910		
5063.2	11020	5066.1	191		
5063.3	5526	5066.2	967		
5063.4	11122	5066.3	897		
5063.5	11248	5066.4	774		
5063.6	11841	5066.5	1670		
5063.7	5888	5066.6	1334		
5063.8	11765	5066.7	1430		
5063.9	11680	5066.8	1434		
5064.0	11670				
5064.1	5820				
5064.2	3886				
5064.3	11575				
5064.4	5817				
5064.5	5774				

26 1998

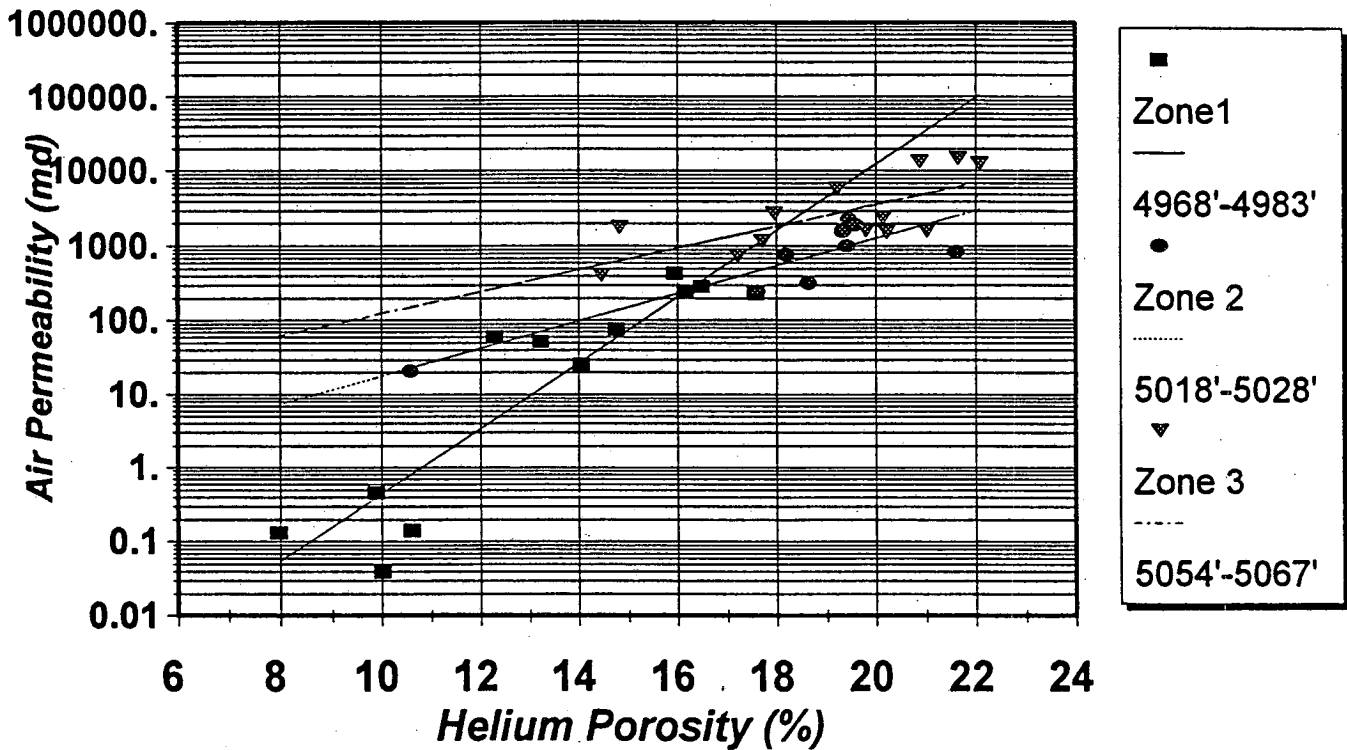
Precision Core Analysis, Inc.

DNR Oil and Gas, Inc.
Nickelson #3-31
Sec. 31 T15S R41W
Wallace County, Kansas

Job:
Date:

9754
01-Nov-97

Air Permeability vs Helium Porosity



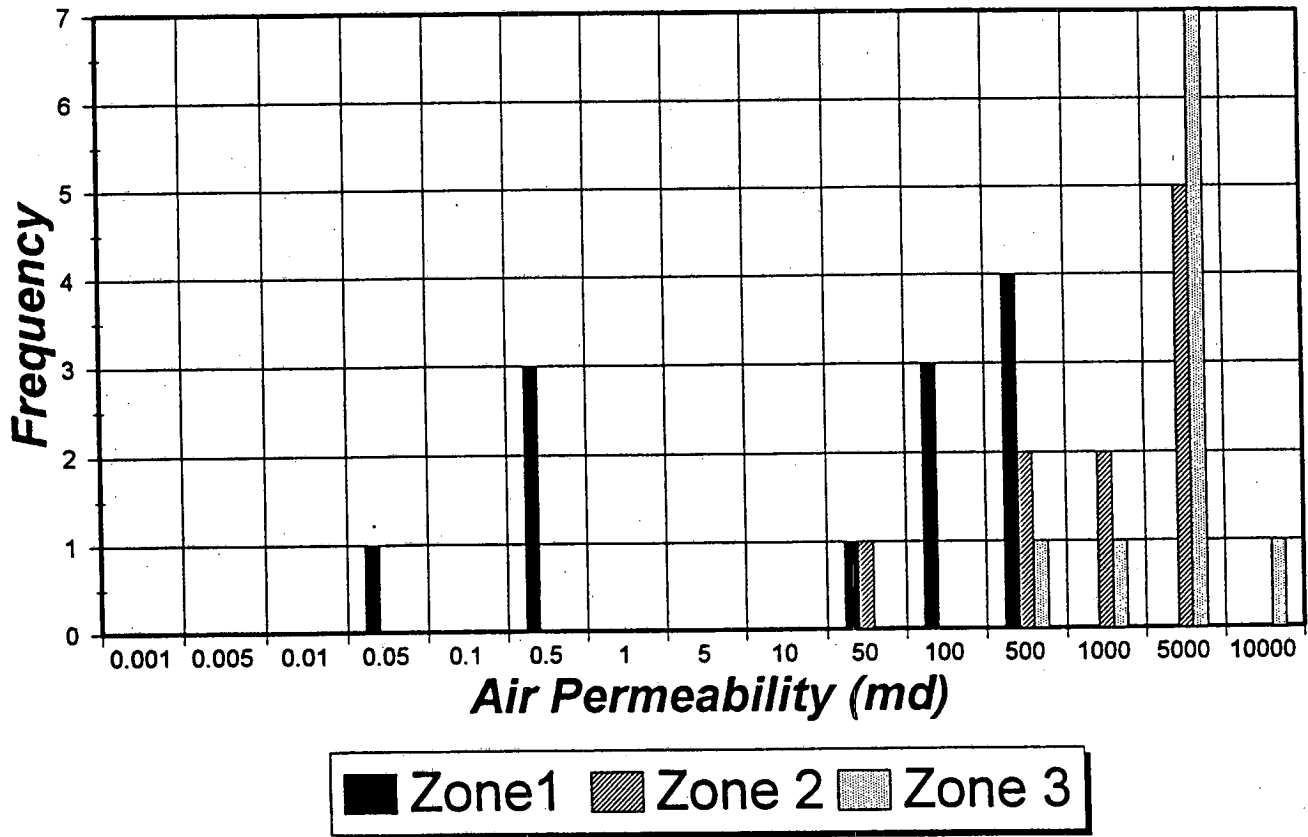
Precision Core Analysis, Inc.

DNR Oil and Gas, Inc.
Nickelson #3-31
Sec. 31 T15S R41W
Wallace County, Kansas

Job:
Date:

9754
01-Nov-97

Air Permeability Frequency Distribution



RECEIVED
STATE COMPLETION COMMISSION
JAN 26 1998
CONSERVATION DIVISION

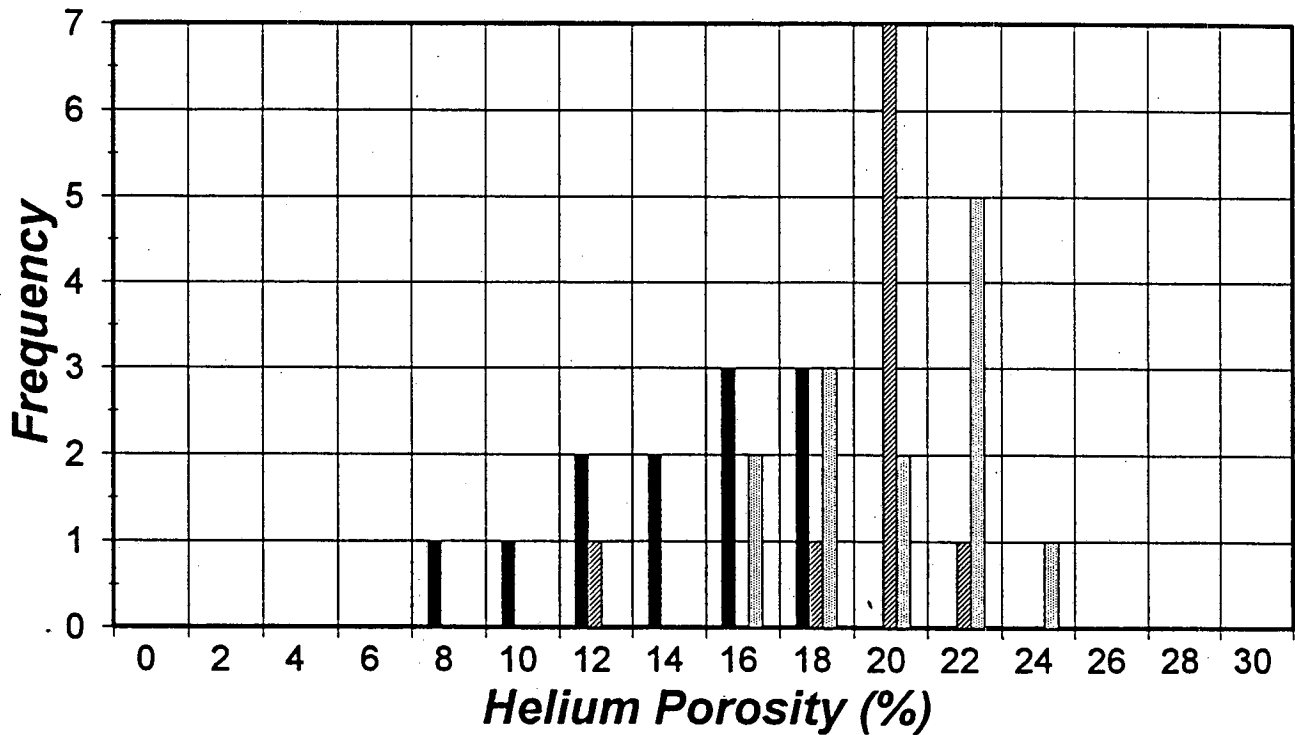
Precision Core Analysis, Inc.

DNR Oil and Gas, Inc.
Nickelson #3-31
Sec. 31 T15S R41W
Wallace County, Kansas

Job:
Date:

9754
01-Nov-97

Helium Porosity Frequency Distribution



■ Zone 1 ▨ Zone 2 ▩ Zone 3

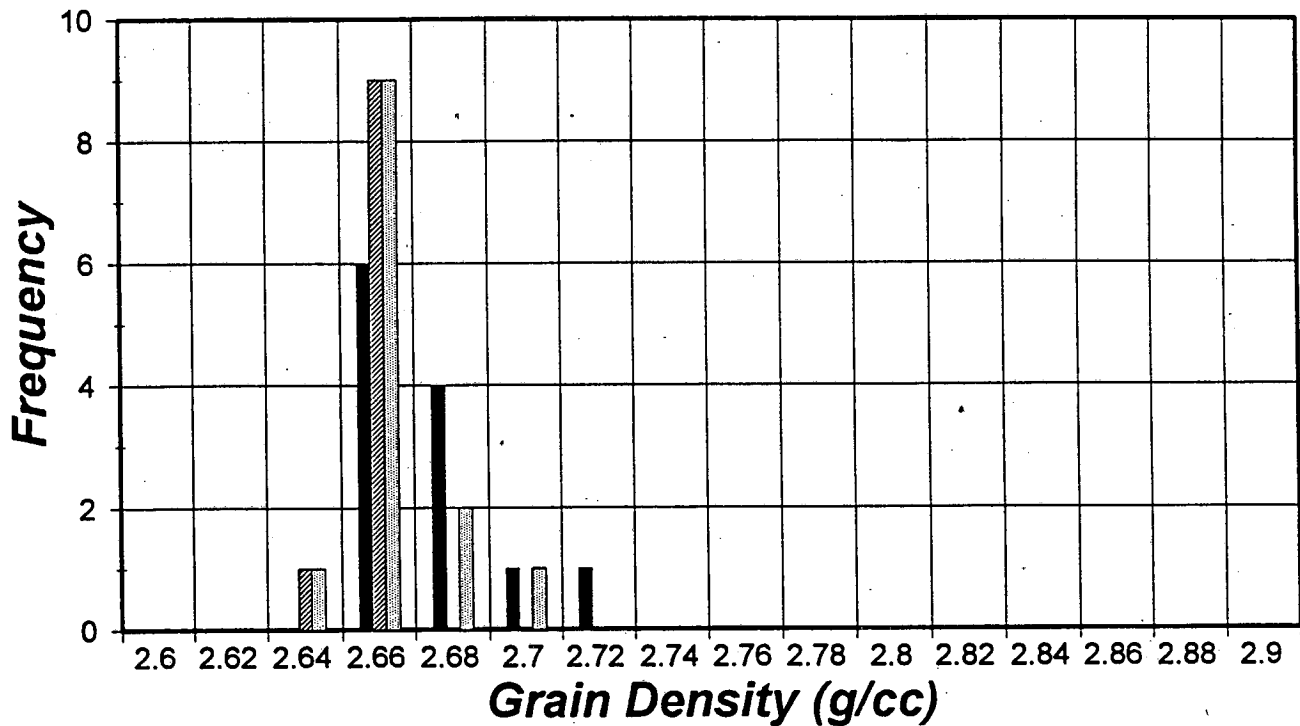
Precision Core Analysis, Inc.

DNR Oil and Gas, Inc.
Nickelson #3-31
Sec. 31 T15S R41W
Wallace County, Kansas

Job:
Date:

9754
01-Nov-97

Grain Density Frequency Distribution



■ Zone 1 ▨ Zone 2 ▩ Zone 3

Precision Core Analysis, Inc.

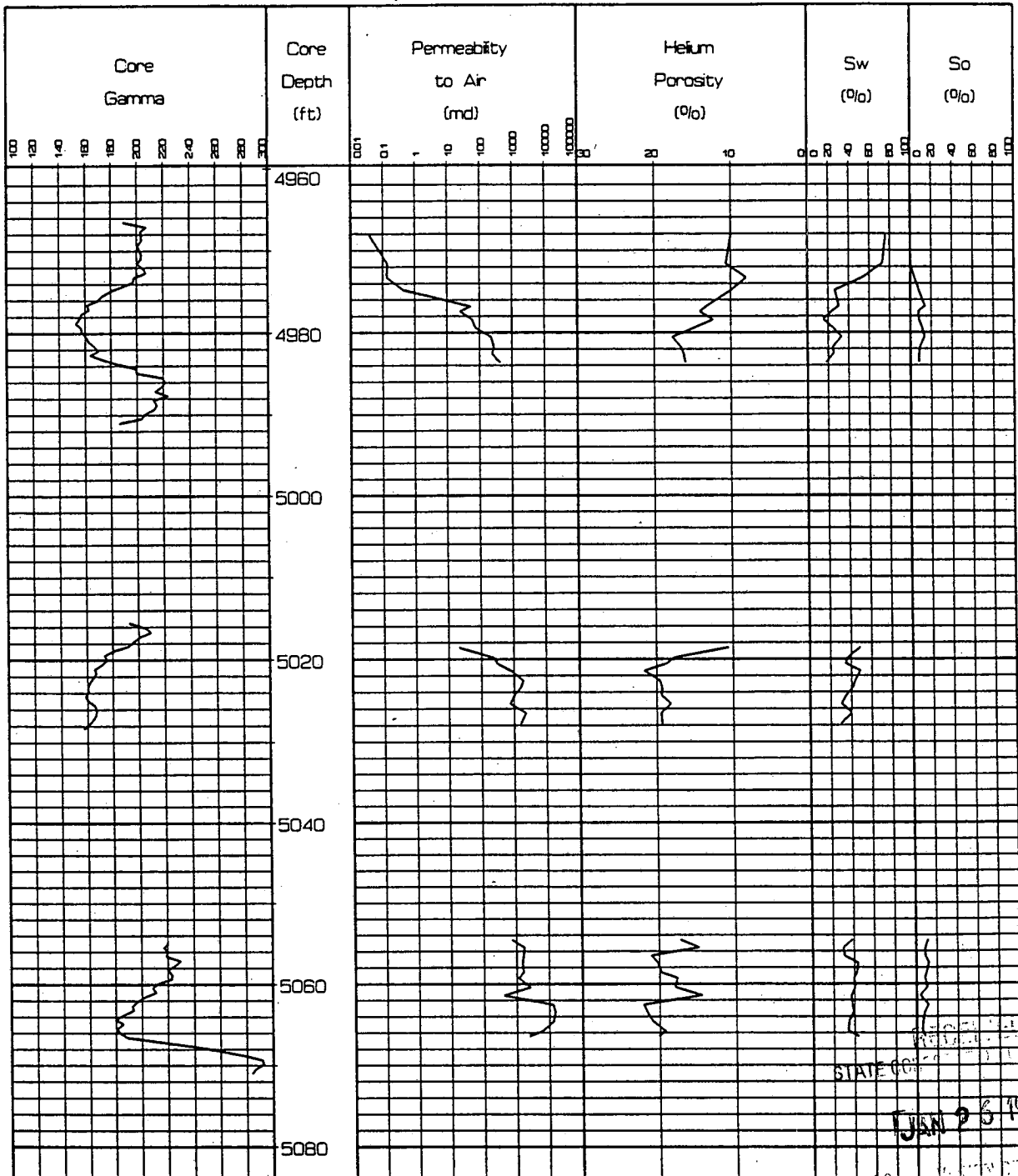
DNR Oil and Gas, Inc.
 Nickelson #3-31
 Sec. 31 T15S R41W
 Wallace County, Kansas

Job:
 Date:

9754
 01-Nov-97

PETRO-LOG

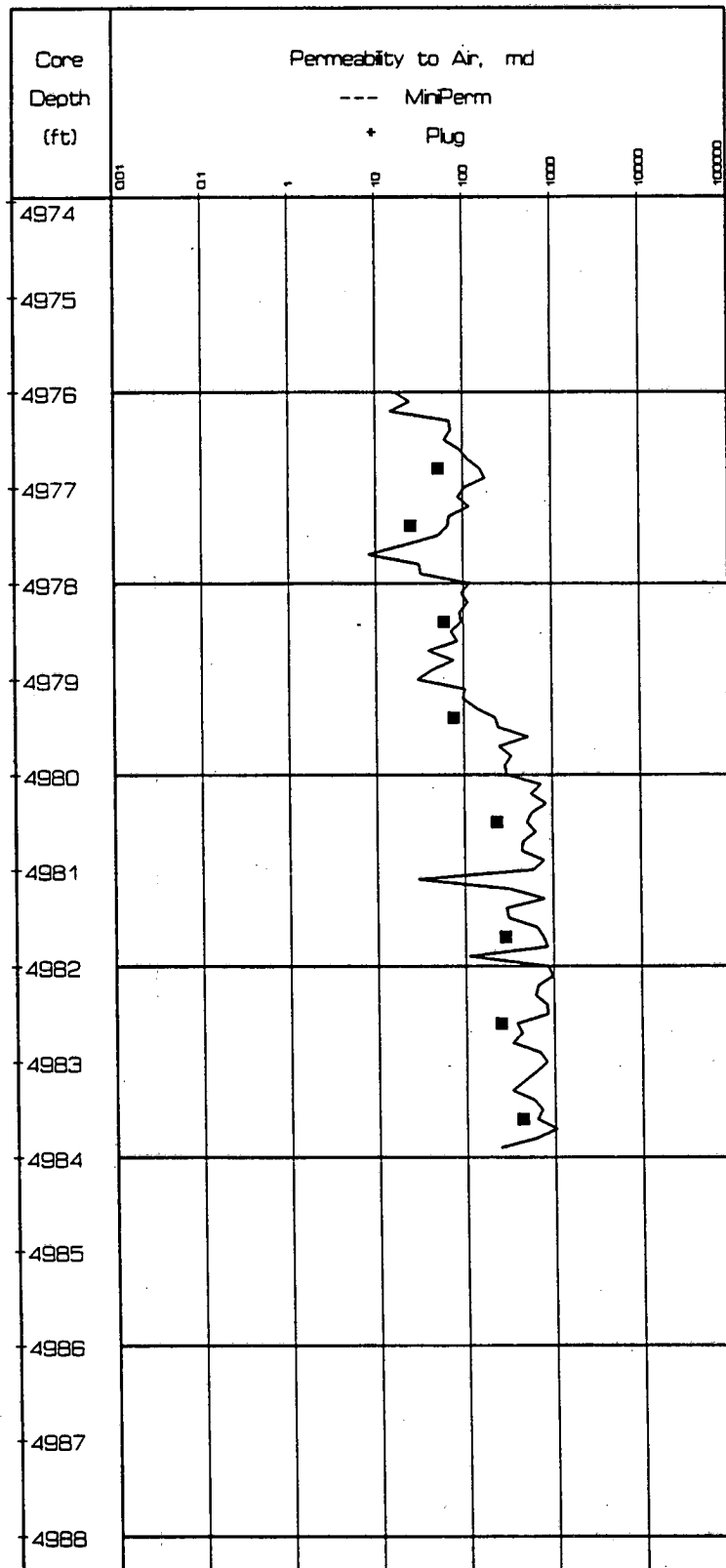
Scale 1:240



Precision Core Analysis, Inc.

PERMEABILITY COMPARISON - ZONE 1

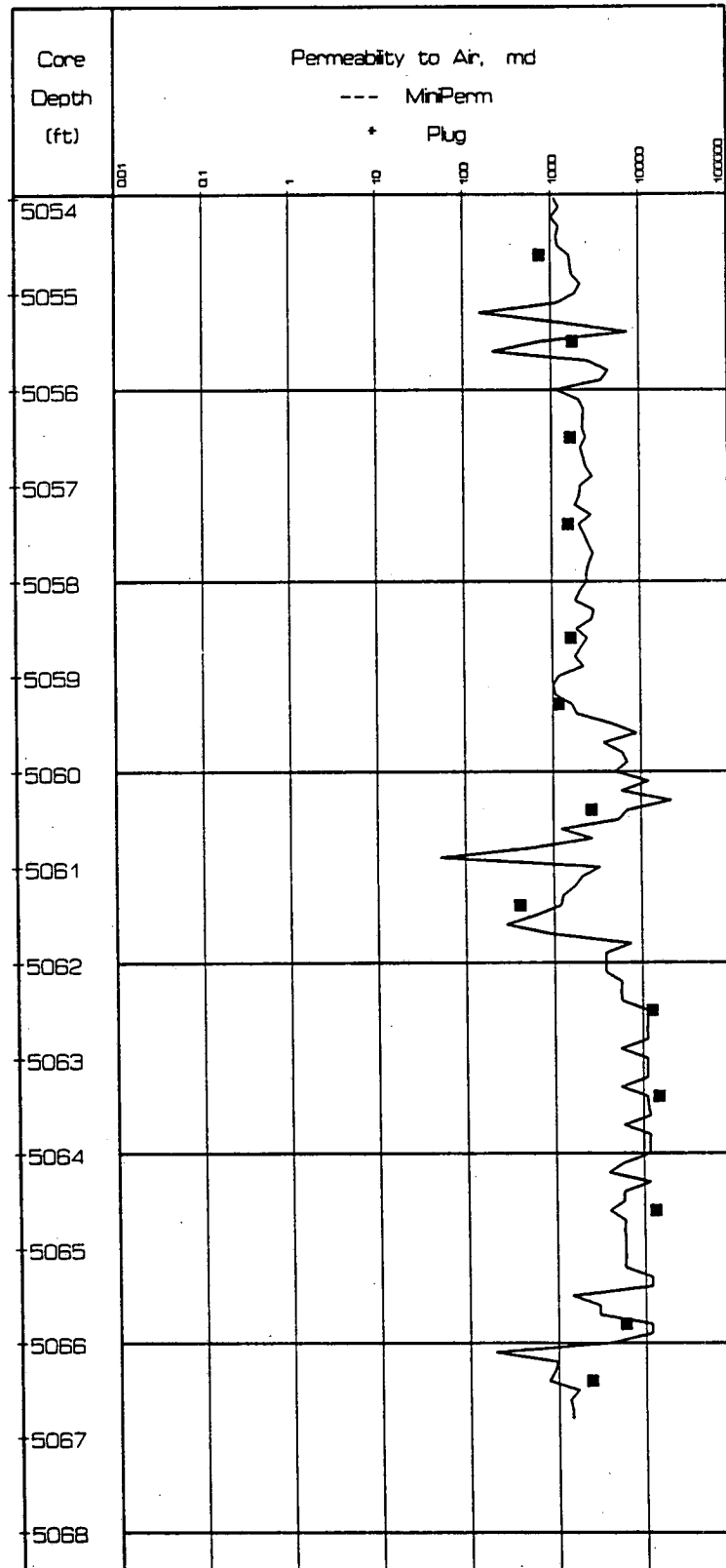
Scale 1:24



Precision Core Analysis, Inc.

PERMEABILITY COMPARISON - ZONE 3

Scale 1:24



ORIGINAL

15-199-20253

DST REPORT

GENERAL INFORMATION

DATE	: 9/22/97	TICKET	: 21793
CUSTOMER	: DNR OIL & GAS	LEASE	: NICKELSON
WELL	: #3-31	TEST: 1	GEOLOGIST: TUCKER
ELEVATION	: 3787 GL	FORMATION:	
SECTION	: 31	TOWNSHIP	: 15S
RANGE	: 41W	COUNTY: WALLACE	STATE : KS
GAUGE SN#	: 13551	RANGE : 4150	CLOCK : 12

WELL INFORMATION

PERFORATION INTERVAL FROM:	4934.00 ft	TO:	4994.00 ft	TVD:	4994.0 ft
DEPTH OF SELECTIVE ZONE:				TEST TYPE:	OIL
DEPTH OF RECORDERS:	4938.0 ft	4941.0 ft			
TEMPERATURE:	122.0				
DRILL COLLAR LENGTH:	569.0 ft	I.D.:	2.200 in		
WEIGHT PIPE LENGTH :	0.0 ft	I.D.:	0.000 in		
DRILL PIPE LENGTH :	4338.0 ft	I.D.:	3.800 in		
TEST TOOL LENGTH :	27.0 ft	TOOL SIZE :	5.500 in		
ANCHOR LENGTH :	60.0 ft	ANCHOR SIZE:	5.500 in		
SURFACE CHOKE SIZE :	0.750 in	BOTTOM CHOKE SIZE:	0.750 in		
MAIN HOLE SIZE :	7.875 in	TOOL JOINT SIZE :	4.5XH		
PACKER DEPTH:	4929.0 ft	SIZE:	6.630 in		
PACKER DEPTH:	4934.0 ft	SIZE:	6.630 in		
PACKER DEPTH:	0.0 ft	SIZE:	0.000 in		
PACKER DEPTH:	0.0 ft	SIZE:	0.000 in		

MUD INFORMATION

DRILLING CON. :	MURFIN RIG 14	VISCOSITY :	62.00 cp
MUD TYPE :	CHEMICAL	WATER LOSS:	7.200 cc
WEIGHT :	9.200 ppg	SERIAL NUMBER: 414	
CHLORIDES :	4000 ppm	REVERSED OUT?: NO	
JARS-MAKE :	WTC		
DID WELL FLOW?: NO			

COMMENTS

Comment

INITIAL FLOW PERIOD FAIR BLOW - OFF BOTTOM OF BUCKET IN 7 MINUTES. FINAL FLOW PERIOD STRONG BLOW - OFF BOTTOM OF BUCKET IN 1 MINUTE. GAS TO

JAN 26 1998

DST REPORT (CONTINUED)

COMMENTS (CONTINUED)

Comment

SURFACE ON FINAL SHUTIN.
 TOOL WAS PLUGGING AND PACKER LEAKING.
 PLUGGING ACTION ON INITIAL AND FINAL FLOW PERIODS

FLUID RECOVERY

Feet of Fluid	% Oil	% Gas	% Water	% Mud	Comments
0.0	0.0	0.0	0.0	0.0	4061 FT GAS ABOVE FLUID
727.0	4.0	40.0	0.0	56.0	GASSY MUD CUT OIL
185.0	56.0	30.0	0.0	14.0	GASSY OIL CUT MUD
0.0	0.0	0.0	0.0	0.0	CHLORIDES 72000 PPM

RATE INFORMATION

OIL VOLUME:	0.7517 STB	TOTAL FLOW TIME:	60.0000 min.
GAS VOLUME:	16.3254 SCF	AVERAGE OIL RATE:	109.8874 STB/D
MUD VOLUME:	3.8269 STB	AVERAGE WATER RATE:	0.0000 STB/D
WATER VOLUME:	0.0000 STB		
TOTAL FLUID :	4.5786 STB		

FIELD TIME & PRESSURE INFORMATION

INITIAL HYDROSTATIC PRESSURE: 2310.00

Description	Duration	p1	p End
INITIAL FLOW	15.00	0.00	0.00
INITIAL SHUT-IN	45.00		0.00
FINAL FLOW	45.00	261.00	271.00
FINAL SHUT-IN	60.00		878.00

FINAL HYDROSTATIC PRESSURE: 2237.00

DST REPORT (CONTINUED)

OFFICE TIME & PRESSURE INFORMATION

INITIAL HYDROSTATIC PRESSURE: 2299.00

Description	Duration	p1	p End
INITIAL FLOW	15.00	123.23	226.98
INITIAL SHUT-IN	45.00		1305.23
FINAL FLOW	45.00	255.45	264.72
FINAL SHUT-IN	60.00		872.00

FINAL HYDROSTATIC PRESSURE: 2224.00

Company: DNR OIL & GAS
 Well: #3-31 NICKELSON
 Field: TKT 21793 DST 1

[Monday: Sep. 22, 1997]
 Page 1

REC #	DAY	REAL TIME	DT (HRS)	BHP (PSIA)

START FLOW 1				
1	0	4:11:18	0.0000	123.23
3	0	4:11:33	0.0040	123.26
8	0	4:12: 9	0.0142	118.97
13	0	4:12:45	0.0241	120.79
18	0	4:13:20	0.0340	123.47
23	0	4:13:54	0.0433	140.09
28	0	4:14:28	0.0526	159.32
33	0	4:14:58	0.0610	202.06
38	0	4:15:31	0.0702	223.90
44	0	4:16: 7	0.0801	279.72
48	0	4:16:37	0.0886	267.58
52	0	4:17:10	0.0977	236.29
57	0	4:17:43	0.1069	258.13
62	0	4:18:19	0.1169	259.07
68	0	4:18:54	0.1265	321.86
72	0	4:19:28	0.1361	279.24
76	0	4:20: 1	0.1453	246.21
81	0	4:20:37	0.1554	244.54
86	0	4:21:12	0.1650	253.32
91	0	4:21:48	0.1750	253.39
96	0	4:22:25	0.1851	250.84
101	0	4:22:58	0.1944	270.94
106	0	4:23:32	0.2040	281.46
110	0	4:24: 4	0.2126	264.10
114	0	4:24:36	0.2217	234.55
118	0	4:25: 8	0.2304	215.45
123	0	4:25:42	0.2400	225.97
128	0	4:26:18	0.2500	226.91
133	0	4:26:54	0.2600	226.98
END FLOW 1				
START SHUTIN 1				
135	0	4:27: 6	0.2634	241.81
138	0	4:27:25	0.2685	265.37
143	0	4:27:55	0.2770	305.50
149	0	4:28:30	0.2867	368.29
155	0	4:29: 5	0.2962	433.68
161	0	4:29:40	0.3061	492.11
167	0	4:30:15	0.3157	555.77
172	0	4:30:46	0.3243	591.55
177	0	4:31:17	0.3331	623.84
182	0	4:31:49	0.3418	658.74
187	0	4:32:21	0.3509	684.07
192	0	4:32:55	0.3601	704.17
197	0	4:33:28	0.3693	726.01
202	0	4:34: 2	0.3787	741.76
207	0	4:34:36	0.3882	754.89
212	0	4:35:10	0.3978	767.15
217	0	4:35:45	0.4074	775.93
222	0	4:36:19	0.4169	789.06
227	0	4:36:54	0.4267	795.23
232	0	4:37:29	0.4364	802.27
237	0	4:38: 4	0.4462	808.43
242	0	4:38:39	0.4559	816.34
247	0	4:39:15	0.4657	820.77

Company: DNR OIL & GAS
 Well: #3-31 NICKELSON
 Field: TKT 21793 DST 1

[Monday: Sep. 22, 1997]
 Page 2

REC #	DAY	REAL TIME	DT (HRS)	BHP (PSIA)
252	0	4:39:50	0.4755	825.19
257	0	4:40:26	0.4854	828.75
262	0	4:41: 1	0.4952	833.17
267	0	4:41:36	0.5050	838.47
272	0	4:42:12	0.5149	841.15
277	0	4:42:47	0.5248	844.70
282	0	4:43:23	0.5347	846.52
287	0	4:43:59	0.5446	850.07
292	0	4:44:34	0.5545	851.88
297	0	4:45:10	0.5644	854.56
302	0	4:45:45	0.5742	858.12
307	0	4:46:21	0.5841	861.67
312	0	4:46:56	0.5939	866.97
317	0	4:47:32	0.6037	871.39
322	0	4:48: 7	0.6135	877.56
327	0	4:48:42	0.6232	884.60
332	0	4:49:17	0.6330	891.63
337	0	4:49:52	0.6427	899.54
342	0	4:50:27	0.6524	907.45
347	0	4:51: 1	0.6620	917.10
352	0	4:51:36	0.6717	925.01
357	0	4:52:11	0.6814	933.79
362	0	4:52:45	0.6909	945.18
367	0	4:53:20	0.7006	953.09
372	0	4:53:55	0.7103	961.00
377	0	4:54:30	0.7200	970.65
382	0	4:55: 5	0.7296	979.42
387	0	4:55:39	0.7392	989.95
392	0	4:56:14	0.7489	997.85
397	0	4:56:49	0.7586	1007.47
402	0	4:57:23	0.7681	1019.68
407	0	4:57:58	0.7776	1031.89
412	0	4:58:32	0.7873	1040.64
417	0	4:59: 7	0.7968	1053.72
422	0	4:59:41	0.8065	1062.46
427	0	5: 0:16	0.8161	1072.07
432	0	5: 0:51	0.8258	1079.94
437	0	5: 1:26	0.8355	1088.69
442	0	5: 2: 0	0.8451	1100.03
447	0	5: 2:35	0.8546	1111.37
452	0	5: 3:10	0.8643	1120.12
457	0	5: 3:44	0.8739	1130.59
462	0	5: 4:19	0.8835	1139.34
467	0	5: 4:53	0.8932	1149.81
472	0	5: 5:28	0.9027	1162.02
477	0	5: 6: 3	0.9123	1171.63
482	0	5: 6:37	0.9219	1182.11
487	0	5: 7:11	0.9315	1194.32
492	0	5: 7:46	0.9411	1204.80
497	0	5: 8:21	0.9507	1214.41
502	0	5: 8:55	0.9603	1224.88
507	0	5: 9:30	0.9699	1234.49
512	0	5:10: 4	0.9795	1246.71
517	0	5:10:39	0.9891	1256.32
522	0	5:11:13	0.9987	1268.53

STATE OF OREGON
 JAN 26 1998
 COUNTY OF CLATSOP

Company: DNR OIL & GAS
Well: #3-31 NICKELSON
Field: TKT 21793 DST 1

[Monday: Sep. 22, 1997]
Page 3

REC #	DAY	REAL TIME	DT (HRS)	BHP (PSIA)
527	0	5:11:48	1.0082	1279.00
532	0	5:12:22	1.0178	1290.35
537	0	5:12:57	1.0275	1298.22
542	0	5:13:32	1.0372	1305.23
		END SHUTIN 1		
		START FLOW 2		
546	0	5:16:22	1.0843	255.45
551	0	5:16:58	1.0943	255.52
556	0	5:17:34	1.1043	255.59
561	0	5:18: 9	1.1141	261.76
566	0	5:18:40	1.1228	296.66
571	0	5:19:16	1.1327	297.61
576	0	5:19:52	1.1428	294.19
581	0	5:20:29	1.1529	292.52
586	0	5:21: 5	1.1630	289.11
591	0	5:21:41	1.1729	291.79
596	0	5:22:16	1.1826	299.70
601	0	5:22:50	1.1923	308.48
606	0	5:23:28	1.2026	298.10
610	0	5:24: 0	1.2115	274.64
614	0	5:24:30	1.2200	261.64
619	0	5:25: 7	1.2302	255.61
624	0	5:25:43	1.2403	253.07
629	0	5:26:19	1.2503	253.14
634	0	5:26:55	1.2603	253.21
639	0	5:27:31	1.2703	253.28
644	0	5:28: 8	1.2804	249.87
649	0	5:28:44	1.2904	248.20
654	0	5:29:20	1.3005	245.65
659	0	5:29:56	1.3106	243.11
664	0	5:30:32	1.3206	243.18
669	0	5:31: 7	1.3304	249.35
674	0	5:31:43	1.3403	252.03
679	0	5:32:16	1.3495	271.26
684	0	5:32:48	1.3583	305.30
689	0	5:33:21	1.3674	328.01
693	0	5:33:52	1.3762	307.16
697	0	5:34:25	1.3853	277.61
702	0	5:35: 2	1.3956	268.10
707	0	5:35:39	1.4058	262.08
712	0	5:36:15	1.4159	259.54
717	0	5:36:51	1.4259	259.61
722	0	5:37:27	1.4358	261.42
727	0	5:38: 3	1.4457	264.97
732	0	5:38:38	1.4554	273.75
737	0	5:39:14	1.4655	271.21
742	0	5:39:51	1.4757	265.18
747	0	5:40:27	1.4858	260.90
752	0	5:41: 3	1.4959	258.36
757	0	5:41:40	1.5060	255.82
762	0	5:42:16	1.5161	254.15
767	0	5:42:52	1.5260	255.96
772	0	5:43:26	1.5355	269.96
777	0	5:43:57	1.5441	305.74
782	0	5:44:31	1.5535	321.48

Company: DNR OIL & GAS
 Well: #3-31 NICKELSON
 Field: TKT 21793 DST 1

[Monday: Sep. 22, 1997]
 Page 4

REC #	DAY	REAL TIME	DT (HRS)	BHP (PSIA)
786	0	5:45: 2	1.5671	306.73
790	0	5:45:33	1.5759	285.02
794	0	5:46: 3	1.5843	274.63
799	0	5:46:40	1.5945	269.47
804	0	5:47:17	1.6046	266.06
809	0	5:47:53	1.6148	261.78
814	0	5:48:29	1.6248	259.23
819	0	5:49: 6	1.6349	256.69
824	0	5:49:42	1.6450	254.15
829	0	5:50:18	1.6550	254.22
834	0	5:50:54	1.6650	254.29
839	0	5:51:30	1.6750	254.36
844	0	5:52: 6	1.6850	254.43
849	0	5:52:42	1.6949	255.37
854	0	5:53:18	1.7049	255.44
859	0	5:53:53	1.7148	257.26
864	0	5:54:29	1.7248	258.20
869	0	5:55: 5	1.7347	260.01
874	0	5:55:41	1.7447	260.95
879	0	5:56:17	1.7546	261.89
884	0	5:56:53	1.7646	262.83
889	0	5:57:28	1.7745	264.65
894	0	5:58: 4	1.7845	264.72
END FLOW 2				
START SHUTIN 2				
899	0	5:58:39	1.7941	276.11
904	0	5:59:11	1.8030	306.66
909	0	5:59:42	1.8117	339.82
914	0	6: 0:14	1.8206	369.50
919	0	6: 0:46	1.8294	402.66
924	0	6: 1:17	1.8381	437.57
929	0	6: 1:49	1.8469	469.86
934	0	6: 2:21	1.8558	498.67
939	0	6: 2:53	1.8646	529.22
944	0	6: 3:25	1.8736	557.16
949	0	6: 3:57	1.8825	586.84
954	0	6: 4:30	1.8916	608.68
959	0	6: 5: 3	1.9009	627.91
964	0	6: 5:37	1.9102	646.26
969	0	6: 6:11	1.9196	662.01
974	0	6: 6:45	1.9292	674.27
979	0	6: 7:20	1.9388	685.66
984	0	6: 7:54	1.9484	694.44
989	0	6: 8:29	1.9581	702.35
994	0	6: 9: 4	1.9679	708.52
999	0	6: 9:39	1.9776	716.43
1004	0	6:10:14	1.9873	723.46
1009	0	6:10:50	1.9971	728.76
1014	0	6:11:25	2.0069	733.18
1019	0	6:12: 0	2.0168	737.61
1024	0	6:12:36	2.0266	742.03
1029	0	6:13:11	2.0364	746.46
1034	0	6:13:47	2.0463	749.14
1039	0	6:14:22	2.0561	753.57
1044	0	6:14:58	2.0660	757.12

JAN 26 1998

Company: DNR OIL & GAS
 Well: #3-31 NICKELSON
 Field: TKT 21793 DST 1

[Monday: Sep. 22, 1997]
 Page 5

REC #	DAY	REAL TIME	DT (HRS)	BHP (PSIA)
1049	0	6:15:33	2.0759	760.67
1054	0	6:16: 9	2.0857	764.23
1059	0	6:16:44	2.0957	766.04
1064	0	6:17:20	2.1056	768.72
1069	0	6:17:56	2.1154	771.41
1074	0	6:18:31	2.1254	773.22
1079	0	6:19: 7	2.1353	775.90
1084	0	6:19:43	2.1452	777.71
1089	0	6:20:19	2.1551	778.66
1094	0	6:20:54	2.1651	780.47
1099	0	6:21:30	2.1749	784.02
1104	0	6:22: 5	2.1849	785.83
1109	0	6:22:41	2.1948	787.65
1114	0	6:23:17	2.2047	788.59
1119	0	6:23:53	2.2147	790.40
1124	0	6:24:29	2.2246	792.21
1129	0	6:25: 4	2.2345	794.02
1134	0	6:25:40	2.2445	794.97
1139	0	6:26:16	2.2544	795.91
1144	0	6:26:52	2.2644	797.72
1149	0	6:27:28	2.2743	798.66
1154	0	6:28: 3	2.2842	800.47
1159	0	6:28:39	2.2942	801.41
1164	0	6:29:15	2.3041	803.23
1169	0	6:29:51	2.3141	804.17
1174	0	6:30:27	2.3240	805.11
1179	0	6:31: 2	2.3340	806.05
1184	0	6:31:38	2.3440	806.99
1189	0	6:32:14	2.3539	807.93
1194	0	6:32:50	2.3639	808.87
1199	0	6:33:26	2.3738	810.69
1204	0	6:34: 2	2.3838	811.63
1209	0	6:34:37	2.3937	813.44
1214	0	6:35:13	2.4036	814.38
1219	0	6:35:49	2.4136	816.19
1224	0	6:36:25	2.4235	818.01
1229	0	6:37: 0	2.4334	818.95
1234	0	6:37:36	2.4434	819.89
1239	0	6:38:12	2.4533	821.70
1244	0	6:38:48	2.4633	822.64
1249	0	6:39:24	2.4732	824.46
1254	0	6:39:59	2.4831	826.27
1259	0	6:40:35	2.4931	827.21
1264	0	6:41:11	2.5030	829.02
1269	0	6:41:47	2.5130	829.96
1274	0	6:42:22	2.5229	831.78
1279	0	6:42:58	2.5328	834.46
1284	0	6:43:34	2.5428	835.40
1289	0	6:44:10	2.5527	837.21
1294	0	6:44:45	2.5626	839.02
1299	0	6:45:21	2.5726	839.97
1304	0	6:45:57	2.5825	841.78
1309	0	6:46:33	2.5924	843.59
1314	0	6:47: 8	2.6023	845.40
1319	0	6:47:44	2.6123	846.34

STATE OF OREGON
 JAN 26 1978

Company: DNR OIL & GAS
Well: #3-31 NICKELSON
Field: TKT 21793 DST 1

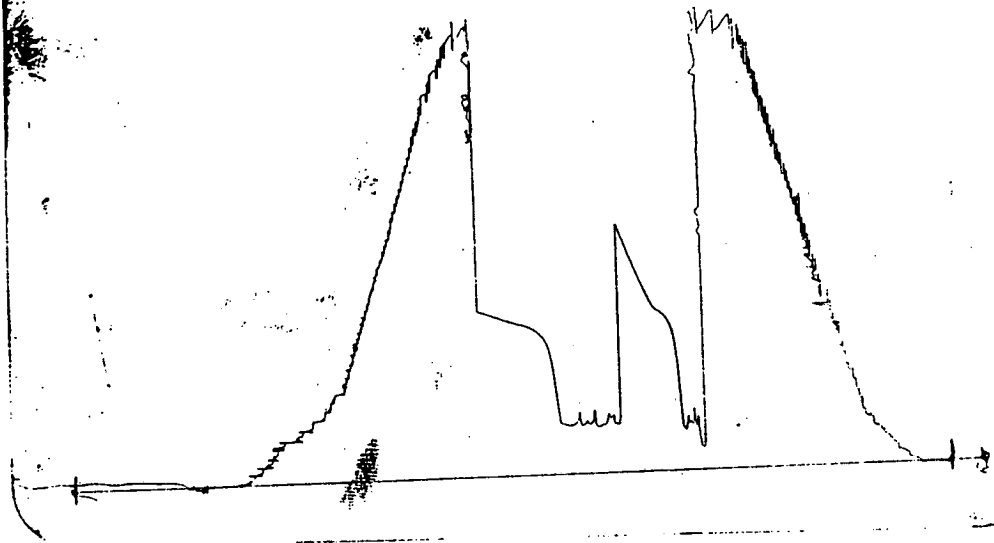
[Monday: Sep. 22, 1997]
Page 6

REC #	DAY	REAL TIME	DT (HRS)	BHP (PSIA)
1324	0	6:48:20	2.6222	848.16
1329	0	6:48:56	2.6322	849.97
1334	0	6:49:32	2.6421	850.91
1339	0	6:50: 7	2.6520	852.72
1344	0	6:50:43	2.6620	853.66
1349	0	6:51:19	2.6719	855.48
1354	0	6:51:55	2.6818	857.29
1359	0	6:52:31	2.6918	858.23
1364	0	6:53: 6	2.7017	860.04
1369	0	6:53:42	2.7117	860.98
1374	0	6:54:18	2.7216	863.67
1379	0	6:54:54	2.7315	864.61
1384	0	6:55:29	2.7415	866.42
1389	0	6:56: 5	2.7514	867.36
1394	0	6:56:41	2.7614	868.30
1399	0	6:57:17	2.7713	870.11
1404	0	6:57:53	2.7813	871.06
1409	0	6:58:28	2.7912	872.00

WESTERN TESTING CO., INC.

13551
DST 1

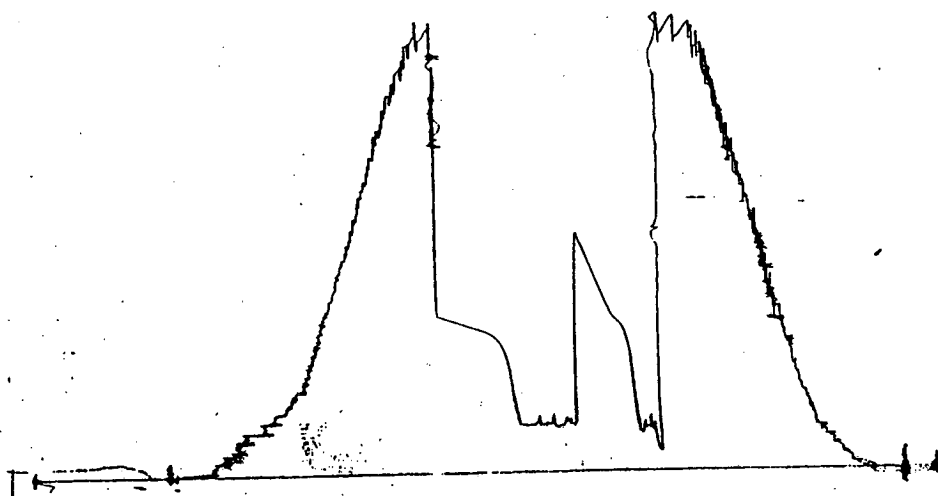
KT 21790



Inside Recorder

13266
DST 1

KT 21790



DST REPORT

GENERAL INFORMATION

DATE : 9/24/97
CUSTOMER : DNR OIL & GAS
WELL : #3-31 TEST: 2
ELEVATION: 3787 GL
SECTION : 31
RANGE : 41W COUNTY: WALLACE
GAUGE SN#: 13551 RANGE : 4150
TICKET : 21794
LEASE : NICKELSON
GEOLOGIST: TUCKER
FORMATION:
TOWNSHIP : 15S
STATE : KS
CLOCK : 12

WELL INFORMATION

PERFORATION INTERVAL FROM: 5008.00 ft TO: 5071.00 ft TVD: 5071.0 ft
DEPTH OF SELECTIVE ZONE: TEST TYPE: OIL
DEPTH OF RECORDERS: 5011.0 ft 5014.0 ft
TEMPERATURE: 125.0
DRILL COLLAR LENGTH: 569.0 ft I.D.: 2.200 in
WEIGHT PIPE LENGTH : 0.0 ft I.D.: 0.000 in
DRILL PIPE LENGTH : 4412.0 ft I.D.: 3.800 in
TEST TOOL LENGTH : 27.0 ft TOOL SIZE : 5.500 in
ANCHOR LENGTH : 63.0 ft ANCHOR SIZE: 5.500 in
SURFACE CHOKE SIZE : 0.750 in BOTTOM CHOKE SIZE: 0.750 in
MAIN HOLE SIZE : 7.875 in TOOL JOINT SIZE : 4.5XH
PACKER DEPTH: 5003.0 ft SIZE: 6.630 in
PACKER DEPTH: 5008.0 ft SIZE: 6.630 in
PACKER DEPTH: 0.0 ft SIZE: 0.000 in
PACKER DEPTH: 0.0 ft SIZE: 0.000 in

MUD INFORMATION

DRILLING CON. : MURFIN RIG 14
MUD TYPE : CHEMICAL
WEIGHT : 9.100 ppg
CHLORIDES : 5000 ppm
JARS-MAKE : WTC
DID WELL FLOW?: NO
VISCOSITY : 54.00 cp
WATER LOSS: 8.000 cc
SERIAL NUMBER: 414
REVERSED OUT?: NO

COMMENTS

Comment

INITIAL FLOW PERIOD STRONG BLOW OFF BOTTOM OF
BUCKET IN 1 MINUTE. FINAL FLOW PERIOD STRONG BLOW
OFF BOTTOM OF BUCKET IN 1 MINUTE.

DST REPORT (CONTINUED)

COMMENTS (CONTINUED)

Comment

GAS TO SURFACE IN 10 MINUTES ON INITIAL FLOW.
GAS TOO SMALL TO MEASURE.

FLUID RECOVERY

Feet of Fluid	% Oil	% Gas	% Water	% Mud	Comments
0.0	0.0	0.0	0.0	0.0	3461 FT GAS ABOVE FLUID
842.0	100.0	0.0	0.0	0.0	GASSY CLEAN OIL
0.0	0.0	0.0	0.0	0.0	GRAVITY 37 @ 75 DEGREES F
768.0	61.0	7.0	0.0	32.0	GASSY HEAVY OIL CUT MUD
0.0	0.0	0.0	0.0	0.0	CHLORIDES 11000 PPM

RATE INFORMATION

OIL VOLUME: 15.1446 STB
 GAS VOLUME: 2.1485 SCF
 MUD VOLUME: 1.7492 STB
 WATER VOLUME: 0.0000 STB
 TOTAL FLUID : 16.8939 STB

TOTAL FLOW TIME: 60.0000 min.
 AVERAGE OIL RATE: 405.4527 STB/D
 AVERAGE WATER RATE: 0.0000 STB/D

FIELD TIME & PRESSURE INFORMATION

INITIAL HYDROSTATIC PRESSURE: 2414.00

Description	Duration	p1	p End
INITIAL FLOW	15.00	439.00	439.00
INITIAL SHUT-IN	45.00		502.00
FINAL FLOW	45.00	481.00	502.00
FINAL SHUT-IN	60.00		502.00

FINAL HYDROSTATIC PRESSURE: 2310.00

JAN 20

DST REPORT (CONTINUED)

OFFICE TIME & PRESSURE INFORMATION

INITIAL HYDROSTATIC PRESSURE: 2420.00

<u>Description</u>	<u>Duration</u>	<u>p1</u>	<u>p End</u>
INITIAL FLOW	15.00	430.22	432.31
INITIAL SHUT-IN	45.00		489.11
FINAL FLOW	45.00	478.69	495.39
FINAL SHUT-IN	60.00		498.81

FINAL HYDROSTATIC PRESSURE: 2320.00

Company: DNR OIL & GAS
 Well: #3-31 NICKELSON
 Field: TKT 21794 DST 2

[Wednesday: Sep. 24, 1997
 Page 1

REC #	DAY	REAL TIME	DT (HRS)	BHP (PSIA)
START FLOW 1				
1	0	11:44: 1	0.0000	430.22
6	0	11:44:37	0.0100	430.23
11	0	11:45:12	0.0200	430.25
16	0	11:45:48	0.0300	430.26
21	0	11:46:24	0.0400	430.28
26	0	11:47: 0	0.0500	430.29
31	0	11:47:36	0.0600	430.30
36	0	11:48:12	0.0699	430.32
41	0	11:48:48	0.0799	430.33
46	0	11:49:24	0.0899	430.34
51	0	11:50: 0	0.0999	430.36
56	0	11:50:36	0.1099	430.37
61	0	11:51:12	0.1199	430.39
66	0	11:51:48	0.1299	430.40
71	0	11:52:24	0.1399	430.41
76	0	11:53: 0	0.1499	430.43
81	0	11:53:36	0.1599	430.44
86	0	11:54:12	0.1699	430.46
91	0	11:54:48	0.1798	430.47
96	0	11:55:24	0.1898	430.48
101	0	11:56: 0	0.1998	430.50
106	0	11:56:36	0.2098	430.51
111	0	11:57:12	0.2198	430.52
116	0	11:57:48	0.2298	430.54
121	0	11:58:24	0.2398	430.55
126	0	11:59: 0	0.2498	432.31
END FLOW 1				
START SHUTIN 1				
128	0	11:59:14	0.2537	443.64
131	0	11:59:35	0.2596	449.74
136	0	12: 0:11	0.2696	455.85
141	0	12: 0:47	0.2795	460.22
146	0	12: 1:23	0.2895	463.72
151	0	12: 1:59	0.2995	467.22
156	0	12: 2:35	0.3095	469.84
161	0	12: 3:11	0.3194	470.73
166	0	12: 3:46	0.3294	473.35
171	0	12: 4:22	0.3394	474.24
176	0	12: 4:58	0.3494	475.99
181	0	12: 5:34	0.3594	476.88
186	0	12: 6:10	0.3693	477.76
191	0	12: 6:46	0.3793	478.65
196	0	12: 7:22	0.3893	479.53
201	0	12: 7:58	0.3993	479.55
206	0	12: 8:34	0.4093	480.43
211	0	12: 9:10	0.4193	481.32
216	0	12: 9:46	0.4293	481.33
221	0	12:10:22	0.4393	481.34
226	0	12:10:58	0.4492	482.23
231	0	12:11:34	0.4592	482.24
236	0	12:12:10	0.4692	482.26
241	0	12:12:46	0.4792	482.27
246	0	12:13:22	0.4892	483.16
251	0	12:13:58	0.4992	483.17

STATE OF OREGON
 DEPARTMENT OF REVENUE
 JAN 26 1998

Company: DNR OIL & GAS
 Well: #3-31 NICKELSON
 Field: TKT 21794 DST 2

[Wednesday: Sep. 24, 1997
 Page 2

REC #	DAY	REAL TIME	DT (HRS)	BHP (PSIA)
256	0	12:14:34	0.5092	483.18
261	0	12:15:10	0.5192	483.20
266	0	12:15:46	0.5292	483.21
271	0	12:16:22	0.5392	484.10
276	0	12:16:57	0.5491	484.11
281	0	12:17:33	0.5591	484.12
286	0	12:18: 9	0.5691	484.14
291	0	12:18:45	0.5791	484.15
296	0	12:19:21	0.5891	484.16
301	0	12:19:57	0.5991	484.18
306	0	12:20:33	0.6091	484.19
311	0	12:21: 9	0.6191	484.21
316	0	12:21:45	0.6291	485.96
321	0	12:22:21	0.6391	485.98
326	0	12:22:57	0.6490	486.86
331	0	12:23:33	0.6590	486.87
336	0	12:24: 9	0.6690	487.76
341	0	12:24:45	0.6790	487.77
346	0	12:25:21	0.6890	488.66
351	0	12:25:57	0.6990	488.67
356	0	12:26:33	0.7090	488.69
361	0	12:27: 9	0.7190	488.70
366	0	12:27:45	0.7290	488.71
371	0	12:28:21	0.7390	488.73
376	0	12:28:57	0.7490	488.74
381	0	12:29:33	0.7589	488.75
386	0	12:30: 9	0.7689	488.77
391	0	12:30:45	0.7789	488.78
396	0	12:31:21	0.7889	488.80
401	0	12:31:57	0.7989	488.81
406	0	12:32:33	0.8089	488.82
411	0	12:33: 9	0.8189	488.84
416	0	12:33:45	0.8289	488.85
421	0	12:34:21	0.8389	488.87
426	0	12:34:56	0.8489	488.88
431	0	12:35:32	0.8589	488.89
436	0	12:36: 8	0.8688	488.91
441	0	12:36:44	0.8788	488.92
446	0	12:37:20	0.8888	488.93
451	0	12:37:56	0.8988	488.95
456	0	12:38:32	0.9088	488.96
461	0	12:39: 8	0.9188	488.98
466	0	12:39:44	0.9288	488.99
471	0	12:40:20	0.9388	489.00
476	0	12:40:56	0.9488	489.02
481	0	12:41:32	0.9588	489.03
486	0	12:42: 8	0.9688	489.05
491	0	12:42:44	0.9788	489.06
496	0	12:43:20	0.9888	489.07
501	0	12:43:56	0.9987	489.09
506	0	12:44:32	1.0087	489.10
511	0	12:45: 8	1.0187	489.11
		END SHUTIN 1		
		START FLOW 2		
512	0	12:46:20	1.0388	478.69

Company: DNR OIL & GAS
Well: #3-31 NICKELSON
Field: TKT 21794 DST 2

[Wednesday: Sep. 24, 1997
Page 3

REC #	DAY	REAL TIME	DT (HRS)	BHP (PSIA)
517	0	12:46:56	1.0488	478.70
522	0	12:47:32	1.0588	478.72
527	0	12:48: 8	1.0688	477.86
532	0	12:48:44	1.0788	477.88
537	0	12:49:20	1.0888	477.02
542	0	12:49:56	1.0987	477.03
547	0	12:50:32	1.1087	477.05
552	0	12:51: 8	1.1187	477.06
557	0	12:51:44	1.1287	477.07
562	0	12:52:20	1.1387	477.09
567	0	12:52:56	1.1487	477.10
572	0	12:53:32	1.1587	477.11
577	0	12:54: 8	1.1687	477.13
582	0	12:54:44	1.1787	477.14
587	0	12:55:20	1.1887	478.03
592	0	12:55:56	1.1987	478.91
597	0	12:56:32	1.2086	478.93
602	0	12:57: 8	1.2186	479.81
607	0	12:57:44	1.2286	479.82
612	0	12:58:20	1.2386	480.71
617	0	12:58:55	1.2486	481.59
622	0	12:59:31	1.2586	481.61
627	0	13: 0: 7	1.2686	482.49
632	0	13: 0:43	1.2786	482.51
637	0	13: 1:19	1.2886	482.52
642	0	13: 1:55	1.2985	483.41
647	0	13: 2:31	1.3085	483.42
652	0	13: 3: 7	1.3185	484.30
657	0	13: 3:43	1.3285	484.32
662	0	13: 4:19	1.3385	485.20
667	0	13: 4:55	1.3485	486.09
672	0	13: 5:31	1.3585	486.10
677	0	13: 6: 7	1.3685	486.99
682	0	13: 6:43	1.3784	487.87
687	0	13: 7:19	1.3884	487.88
692	0	13: 7:55	1.3984	488.77
697	0	13: 8:31	1.4084	489.65
702	0	13: 9: 7	1.4184	490.54
707	0	13: 9:43	1.4284	491.42
712	0	13:10:19	1.4384	492.31
717	0	13:10:55	1.4484	492.32
722	0	13:11:31	1.4583	493.21
727	0	13:12: 7	1.4683	493.22
732	0	13:12:43	1.4783	493.23
737	0	13:13:18	1.4883	493.25
742	0	13:13:54	1.4983	493.26
747	0	13:14:30	1.5083	493.28
752	0	13:15: 6	1.5183	493.29
757	0	13:15:42	1.5283	493.30
762	0	13:16:18	1.5383	493.32
767	0	13:16:54	1.5483	493.33
772	0	13:17:30	1.5583	493.35
777	0	13:18: 6	1.5682	494.23
782	0	13:18:42	1.5782	494.24
787	0	13:19:18	1.5882	494.26

Company: DNR OIL & GAS
 Well: #3-31 NICKELSON
 Field: TKT 21794 DST 2

[Wednesday: Sep. 24, 1997
 Page 4

REC #	DAY	REAL TIME	DT (HRS)	BHP (PSIA)
792	0	13:19:54	1.5982	494.27
797	0	13:20:30	1.6082	494.29
802	0	13:21: 6	1.6182	494.30
807	0	13:21:42	1.6282	494.31
812	0	13:22:18	1.6382	494.33
817	0	13:22:54	1.6482	494.34
822	0	13:23:30	1.6582	494.35
827	0	13:24: 6	1.6682	494.37
832	0	13:24:42	1.6781	494.38
837	0	13:25:18	1.6881	495.27
842	0	13:25:54	1.6981	495.28
847	0	13:26:30	1.7081	495.29
852	0	13:27: 6	1.7181	495.31
857	0	13:27:42	1.7281	495.32
862	0	13:28:18	1.7381	495.34
867	0	13:28:54	1.7481	495.35
872	0	13:29:30	1.7581	495.36
877	0	13:30: 6	1.7681	495.38
882	0	13:30:42	1.7781	495.39
END FLOW 2				
START SHUTIN 2				
885	0	13:31: 3	1.7840	495.40
887	0	13:31:18	1.7881	495.41
892	0	13:31:53	1.7980	495.42
897	0	13:32:29	1.8080	495.43
902	0	13:33: 5	1.8180	496.32
907	0	13:33:41	1.8280	496.33
912	0	13:34:17	1.8380	496.35
917	0	13:34:53	1.8480	496.36
922	0	13:35:29	1.8580	496.37
927	0	13:36: 5	1.8680	497.26
932	0	13:36:41	1.8780	497.27
937	0	13:37:17	1.8880	497.29
942	0	13:37:53	1.8979	497.30
947	0	13:38:29	1.9079	497.31
952	0	13:39: 5	1.9179	497.33
957	0	13:39:41	1.9279	497.34
962	0	13:40:17	1.9379	497.36
967	0	13:40:53	1.9479	497.37
972	0	13:41:29	1.9579	497.38
977	0	13:42: 5	1.9679	497.40
982	0	13:42:41	1.9779	497.41
987	0	13:43:17	1.9879	498.30
992	0	13:43:53	1.9978	498.31
997	0	13:44:29	2.0078	498.32
1002	0	13:45: 5	2.0178	498.34
1007	0	13:45:41	2.0278	498.35
1012	0	13:46:17	2.0378	498.36
1017	0	13:46:53	2.0478	498.38
1022	0	13:47:29	2.0578	498.39
1027	0	13:48: 5	2.0678	498.41
1032	0	13:48:41	2.0778	498.42
1037	0	13:49:17	2.0878	498.43
1042	0	13:49:53	2.0978	498.45
1047	0	13:50:28	2.1078	498.46

Company: DNR OIL & GAS
Well: #3-31 NICKELSON
Field: TKT 21794 DST 2

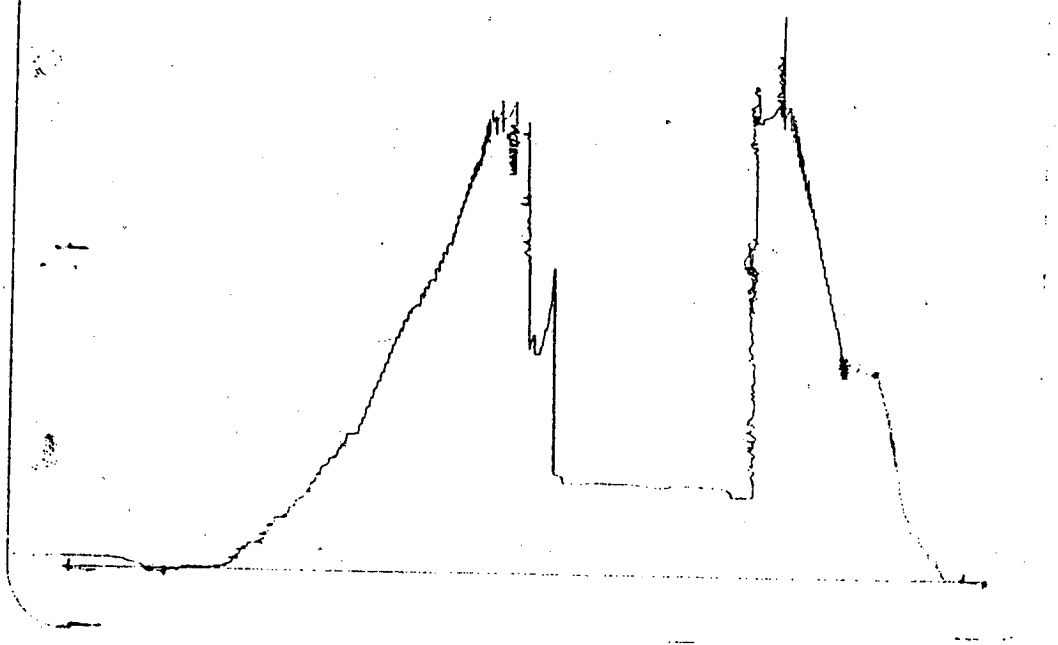
[Wednesday: Sep. 24, 199
Page 5

REC #	DAY	REAL TIME	DT (HRS)	BHP (PSIA)
1052	0	13:51: 4	2.1177	498.48
1057	0	13:51:40	2.1277	498.49
1062	0	13:52:16	2.1377	498.50
1067	0	13:52:52	2.1477	498.52
1072	0	13:53:28	2.1577	498.53
1077	0	13:54: 4	2.1677	498.54
1082	0	13:54:40	2.1777	498.56
1087	0	13:55:16	2.1877	498.57
1092	0	13:55:52	2.1977	498.59
1097	0	13:56:28	2.2077	498.60
1102	0	13:57: 4	2.2177	498.61
1107	0	13:57:40	2.2277	498.63
1112	0	13:58:16	2.2377	498.64
1117	0	13:58:52	2.2476	498.65
1122	0	13:59:28	2.2576	498.67
1127	0	14: 0: 4	2.2676	498.68
1132	0	14: 0:40	2.2776	498.70
1137	0	14: 1:16	2.2876	498.71
1142	0	14: 1:52	2.2976	498.72
1147	0	14: 2:28	2.3076	498.74
1152	0	14: 3: 4	2.3176	498.75
1157	0	14: 3:40	2.3276	498.77
1162	0	14: 4:16	2.3376	498.78
1167	0	14: 4:52	2.3476	498.79
1172	0	14: 5:28	2.3576	498.81

WESTERN TESTING CO., INC.

OST2
13551

KT 21294



Inside Recorder

13265
DST 2

KT 21294

