

NOTICE OF INTENTION TO DRILL

(see rules on reverse side)

✓

Expected Spud Date. April 1, 1988
month day year

API Number 15-199-20,148-00-00

OPERATOR: License # 5171

Irregular Section
S/2 SW SW Sec. 1 Twp. 15S S, Rg. 43 East West

Name TXO Production Corp.

540' Ft. from South Line of Section

Address 155 N. Market, Suite 1000

+1250' Ft. from East Line of Section

City/State/Zip Wichita, Kansas 67202

(Note: Locate well on Section Plat on reverse side)

Contact Person Cory West

Nearest lease or unit boundary line 460' feet

Phone (316) 269-7655

County Wallace

CONTRACTOR: License # 6033

Lease Name HIBBERT "A" Well # 6

Name Murfin Drilling Company

Ground surface elevation 3929 feet MSL

City/State Wichita, Kansas

Domestic well within 330 feet: yes no

Well Drilled For: Well Class: Type Equipment:

Municipal well within one mile: yes no

X Oil Storage Infield X Mud Rotary

Depth to bottom of fresh water 300 1800'

Gas Inj Pool Ext Air Rotary

Depth to bottom of usable water

OWWO Expl Wildcat Cable

Surface pipe by Alternate: 1 2 X

IF OWWO: old well info as follows:

Surface pipe planned to be set 680'

Operator

Conductor pipe required None

Well Name

Projected Total Depth 5300' feet

Comp Date Old Total Depth

Formation Morrow Sand

I certify that well will comply with K.S.A. 55-101, et seq., plus eventually plugging hole to KCC specifications.

Date 3-22-88 Signature of Operator or Agent Cory West Title Drlg. & Prod. Engineer

For KCC Use: Conductor Pipe Required feet; Minimum Surface Pipe Required 350 feet per Alt. X (2)

This Authorization Expires 9-22-88 Approved By 24-3-22-88

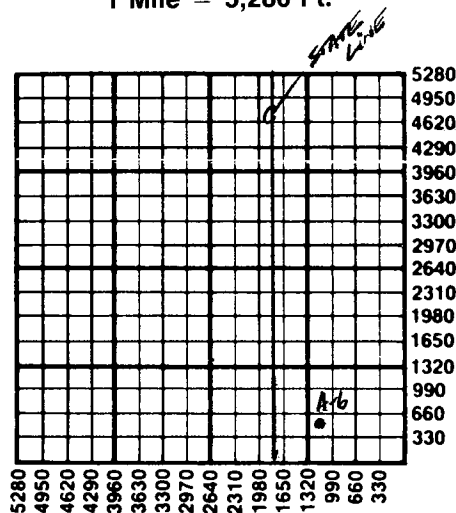
EFFECTIVE DATE: 3-27-88

Must be filed with the K.C.C. five (5) days prior to commencing well
This card void if drilling not started within six (6) months of date received by K.C.C.

Important procedures to follow:

1. Notify District office before setting surface casing.
2. Set surface casing by circulating cement to the top.
3. File completion forms ACO-1 with K.C.C. within 120 days of well spud date, following instructions on ACO-1, side 1, and including copies of wireline logs.
4. Notify District office 48 hours prior to old well workover or re-entry.
5. Prior to filing Intent, prepare a proposed plugging plan in case well is D & A, then obtain approval of plan when calling district office prior to setting surface pipe.
6. Submit plugging report (CP-4) to K.C.C. after plugging is completed.
7. Obtain an approved injection docket number before disposing of salt water.
8. Notify K.C.C. within 10 days when injection commences or terminates.
9. If an alternate 2 completion, cement in the production pipe from below any usable water to surface within 120 days of spud date.

A Regular Section of Land 1 Mile = 5,280 Ft.



State Corporation Commission of Kansas
Conservation Division
200 Colorado Derby Building
Wichita, Kansas 67202-1212
(316) 263-3238