

STATE CORPORATION COMMISSION OF KANSAS  
OIL & GAS CONSERVATION DIVISION  
WELL COMPLETION OR RECOMPLETION FORM  
ACO-1 WELL HISTORY  
DESCRIPTION OF WELL AND LEASE

Operator: License # 5171  
Name TXO Production Corp.  
Address 155 N. Market, Suite 1000  
City/State/Zip Wichita, Ks. 67202

Purchaser

Operator Contact Person Cory West  
Phone 303-861-4246

Contractor: License # 5422  
Name Abercrombie Drilling, Inc.

Wellsite Geologist  
Phone

Designate Type of Completion  
 New Well  Re-Entry  Workover  
 Oil  SWD  Temp Abd  
 Gas  Inj  Delayed Comp  
 Dry  Other (Core, Water Supply etc.)

If OWWO: old well info as follows:  
Operator  
Well Name  
Comp. Date Old Total Depth

WELL HISTORY

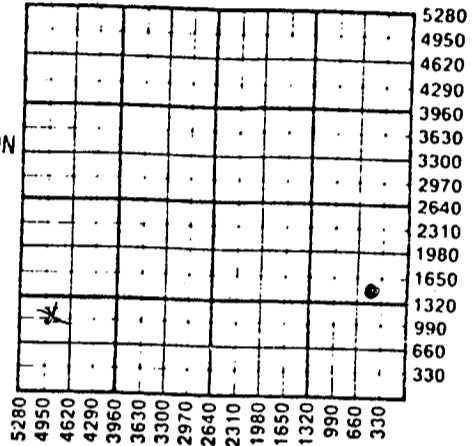
Drilling Method:  Mud Rotary  Air Rotary  Cable  
2-20-88 3-3-88 3-4-88  
Spud Date Date Reached TD Completion Date  
5400  
Total Depth PBD

Amount of Surface Pipe Set and Cemented at 766 feet  
Multiple Stage Cementing Collar Used? Yes No  
If yes, show depth set feet  
If alternate 2 completion, cement circulated from feet depth to w/ SX cmt  
Cement Company Name  
Invoice #  
AIT II D & A

API NO. 15-199-20,141-00-00  
County Wallace  
1100' FSL 460' East  
FWL Sec 24 Twp 14 Rge 43 X West  
1100' Ft North from Southeast Corner of Section  
460' Ft West from Southeast Corner of Section  
(Note: Locate well in section plat below)

Lease Name Purvis Farms Well # 1-24X  
Field Name  
Producing Formation  
Elevation: Ground 3895 KB 3900

Section Plat



WATER SUPPLY INFORMATION

Disposition of Produced Water: Disposal  
Docket # Repressuring

Questions on this portion of the ACO-1 call:  
Water Resources Board (913) 296-3717  
Source of Water:  
Division of Water Resources Permit #  
Groundwater Ft North from Southeast Corner (Well) Ft West from Southeast Corner of Sec Twp Rge East West  
Surface Water Ft North from Southeast Corner (Stream, pond etc) Ft West from Southeast Corner Sec Twp Rge East West  
Other (explain) Bought in Colorado (purchased from city, R.W.D. #)

INSTRUCTIONS: This form shall be completed in triplicate and filed with the Kansas Corporation Commission, 200 Colorado Derby Building, Wichita, Kansas 67202, within 120 days of the spud date of any well. Rule 82-3-130, 82-3-107 and 82-3-106 apply. Information on side two of this form will be held confidential for a period of 12 months if requested in writing and submitted with the form. See rule 82-3-107 for confidentiality in excess of 12 months. One copy of all wireline logs and drillers time log shall be attached with this form. Submit CP-4 form with all plugged wells. Submit CP-111 form with all temporarily abandoned wells.

All requirements of the statutes, rules and regulations promulgated to regulate the oil and gas industry have been fully complied with and the statements herein are complete and correct to the best of my knowledge.

Signature [Signature] Title [Title] Date 5/9/88

Subscribed and sworn to before me this 12th day of May 1988  
Notary Public [Signature] Date Commission Expires 11/25/92

RECEIVED  
STATE CORPORATION COMMISSION  
MAY 16 1988  
05-16-88  
CONSERVATION DIVISION  
Wichita, Kansas

RECEIVED  
STATE CORPORATION COMMISSION

K.C.C. OFFICE USE ONLY  
F Letter of Confidentiality Attached  
C Wireline Log Received  
C Drillers Timelog Received  
Distribution  
KCC SWD/Rep NGPA  
KGS Plug Other (Specify)

MAR 14 1989  
03-14-88  
CONSERVATION DIVISION  
Wichita, Kansas

3-14-88  
Form ACO-1 (5-86)

Sec 24 Twp 14 Rge 43



SIDE TWO

Operator Name ..... TXO Production Corp. .... Lease Name..... Purvis Farms ..... Well #..... 1-24X

Sec..... 24 ..... Twp..... 14 ..... Rge..... 43 .....  East  West County..... Wallace .....

WELL LOG

INSTRUCTIONS: Show important tops and base of formations penetrated. Detail all cores. Report all drill stem tests giving interval tested, time tool open and closed, flowing and shut-in pressures, whether shut-in pressure reached static level, hydrostatic pressures, bottom hole temperature, fluid recovery, and flow rates if gas to surface during test. Attach extra sheet if more space is needed. Attach copy of log.

Drill Stem Tests Taken  Yes  No  
 Samples Sent to Geological Survey  Yes  No  
 Cores Taken  Yes  No

Formation Description  
 Log  Sample

Name Top Bottom

N/A

RECEIVED  
 STATE CORPORATION COMMISSION

MAY 16 1988

CONSERVATION DIVISION  
 Wichita, Kansas

CASING RECORD <input type="checkbox"/> New <input type="checkbox"/> Used Report all strings set-conductor, surface, intermediate, production, etc.							
Purpose of String	Size Hole Drilled	Size Casing Set (in O.D.)	Weight Lbs/Ft.	Setting Depth	Type of Cement	#Sacks Used	Type and Percent Additives
Surface	12 1/4	8 5/8	23#	766'	Prém. Plus	150	2% cc
PERFORATION RECORD				Acid, Fracture, Shot, Cement Squeeze Record			
Shots Per Foot	Specify Footage of Each Interval Perforated			(Amount and Kind of Material Used)		Depth	
TUBING RECORD				Liner Run <input type="checkbox"/> Yes <input type="checkbox"/> No			
Date of First Production		Producing Method <input type="checkbox"/> Flowing <input type="checkbox"/> Pumping <input type="checkbox"/> Gas Lift <input type="checkbox"/> Other (explain).....					
Estimated Production Per 24 Hours	Oil	Gas	Water	Gas-Oil Ratio	Gravity		
	Bbls	MCF	Bbls	CFPB			

METHOD OF COMPLETION

Production Interval

Disposition of gas:  Vented  Sold  Used on Lease

Open Hole  Perforated  Other (Specify) .....

Dually Completed  Commingled

RECEIVED  
 STATE CORPORATION COMMISSION

MAR 14 1988

CONSERVATION DIVISION  
 Wichita, Kansas