

ORIGINAL

SIDE ONE

STATE CORPORATION COMMISSION OF KANSAS
OIL & GAS CONSERVATION DIVISION
WELL COMPLETION OR RECOMPLETION FORM
ACO-1 WELL HISTORY
DESCRIPTION OF WELL AND LEASE

API NO. 15-... 199-20-167-00-00

County...Wallace.....

..SW .SW. NW.. Sec 9.... Twp 15S...Rge 40W... West

2970 Ft North from Southeast Corner of Section
4950 Ft West from Southeast Corner of Section
(Note: Locate well in section plat below)

Lease Name.....Silkman.....Well # 5-9.....

Field Name.....

Producing Formation.....

Elevation: Ground.....3659.....KB.....3664.....

Operator: License #
Name BHP Petroleum (Americas), Inc.
Address One Civic Center, 1560 Broadway,
Suite 1900, Denver, CO 80202
City/State/Zip

Purchaser.....

Operator Contact Person
Phone

Contractor: License # 6033
Name Murfin Drilling Company

Wellsite Geologist.....
Phone.....

Designate Type of Completion
x New Well Re-Entry Workover
Oil Gas SWD Inj Temp Abd
Dry Other (Core, Water Supply etc.)

If ONWO: old well info as follows:
Operator
Well Name
Comp. DateOld Total Depth.....

WELL HISTORY

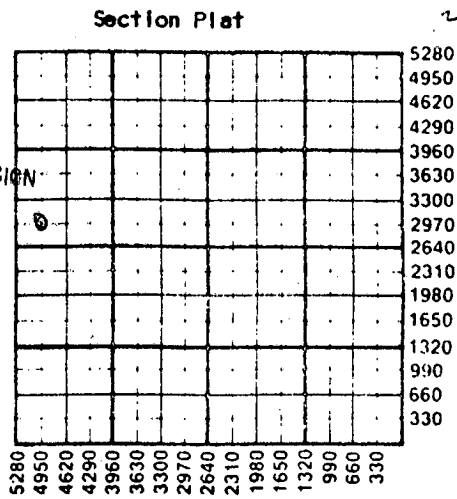
Drilling Method:
x Mud Rotary Air Rotary Cable

12-3-88 12-13-88 12-14-88
Spud Date Date Reached TD Completion Date

5230'
Total Depth PBTD

Amount of Surface Pipe Set and Cemented at 393 feet
Multiple Stage Cementing Collar Used? Yes No
If yes, show depth set.....feet
If alternate 2 completion, cement circulated
from.....feet depth to.....w/.....SX cmt
Cement Company Name
Invoice #
ALT II DTD

RECEIVED
STATE CORPORATION COMMISSION
DEC 5 5 1988
12-29-88
CONSERVATION DIVISION
Wichita, Kansas



WATER SUPPLY INFORMATION

Disposition of Produced Water: Disposal
Docket # Repressuring

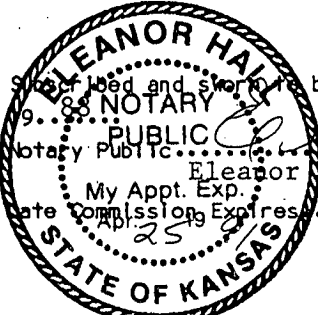
Questions on this portion of the ACO-1 call:
Water Resources Board (913) 296-3717
Source of Water: Pumped to rig.
Division of Water Resources Permit #.....
Groundwater.....Ft North from Southeast Corner
(Well)Ft West from Southeast Corner of
Sec Twp Rge East West
Surface Water.....Ft North from Southeast Corner
(Stream, pond etc).....Ft West from Southeast Corner
Sec Twp Rge East West
Other (explain).....
(purchased from city, R.W.D. #)

INSTRUCTIONS: This form shall be completed in triplicate and filed with the Kansas Corporation Commission, 200 Colorado Derby Building, Wichita, Kansas 67202, within 120 days of the spud date of any well. Rule 82-3-130, 82-3-107 and 82-3-106 apply. Information on side two of this form will be held confidential for a period of 12 months if requested in writing and submitted with the form. See rule 82-3-107 for confidentiality in excess of 12 months. One copy of all wireline logs and drillers time log shall be attached with this form. Submit CP-4 form with all plugged wells. Submit CP-111 form with all temporarily abandoned wells.

All requirements of the statutes, rules and regulations promulgated to regulate the oil and gas industry have been fully complied with and the statements herein are complete and correct to the best of my knowledge.

Signature
Title...Drilling Manager.....Date 12-21-88.....

Subscribed and sworn to before me this 21st day of December 1988
Notary Public Eleanor Hall
Eleanor Hall, Notary Public
My Appt. Exp. 4-25-91
Notary Commission Expires 4-25-91



K.C.C. OFFICE USE ONLY
F Letter of Confidentiality Attached
C Wireline Log Received
C Drillers Timelog Received
Distribution
KCC SWD/Rep NGPA
KGS Plug Other
(Specify)
12-29-88
Form ACO-1 (5-86)

Sec. 9 Twp. 15Rge 40W

Operator Name BHP Petroleum (Americas), Inc. Lease Name Silkman Well # 5-9

Sec. 9 Twp. 15S Rge. 40W East West Wallace County

RELEASED

WELL LOG

MAR 07 1990

INSTRUCTIONS: Show important tops and base of formations penetrated. Detail all cores. Report all tests giving interval tested, time tool open and closed, flowing and shut-in pressures, whether shut-in pressure reached static level, hydrostatic pressures, bottom hole temperature, fluid recovery, and flow rates if gas to surface during test. Attach extra sheet if more space is needed. Attach copy of log.

FROM CONFIDENTIAL

* Drill Stem Tests Taken [X] Yes [] No
Samples Sent to Geological Survey [X] Yes [] No
Cores Taken [] Yes [X] No

(Please Titehole for 6 mos)

#1 DST: 4130-4164 Lansing
IF 15 min, strong blow from bottom of bucket in 1 1/4 min, 83-457 psi
ISI 30 min, died at once, 1120 psi
FF 60 min, strong blow to bottom in 2 mins, 539 - 1010 psi
FSI 120 mins, died at once, 1120 psi.
Fluid Recovery 2350' salt water, 4600 ML
SW - 30,000 chlorides, hydrostatic Init = 2053,
Final = 1942

Formation Description table with columns: Name, Top, Bottom. Includes entries like Stone Corral, Neva, Foraker, Lansing, Marmaton, Cherokee, Atoka, Morrow, Keyes, St. Louis, Spergen, TD.

CASING RECORD [] New [] Used
Report all strings set-conductor, surface, intermediate, production, etc.

Table with columns: Purpose of String, Size Hole Drilled, Size Casing Set (in O.D.), Weight Lbs/Ft., Setting Depth, Type of Cement, #Sacks Used, Type and Percent Additives.

PERFORATION RECORD table with columns: Shots Per Foot, Specify Footage of Each Interval Perforated, Acid, Fracture, Shot, Cement Squeeze Record (Amount and Kind of Material Used), Depth.

TUBING RECORD Size Set At Packer at Liner Run [] Yes [] No

Date of First Production Producing Method [] Flowing [] Pumping [] Gas Lift [] Other (explain)

Table for Estimated Production Per 24 Hours with columns: Oil, Gas, Water, Gas-Oil Ratio, Gravity.

METHOD OF COMPLETION Production Interval

Disposition of gas: [] Vented [] Sold [] Used on Lease [] Open Hole [] Perforation [] Other (Specify) [] Dually Completed [] Commingled

FEB 14 1989