

SIDE TWO

Operator Name Samuel Gary Jr. & Associates, Inc Lease Name Pheasant Tail Well # 30-1K

Sec. 30 Twp. 15 Rge. 42 East West County Wallace

WELL LOG

INSTRUCTIONS: Show important tops and base of formations penetrated. Detail all cores. Report all drill stem tests giving interval tested, time tool open and closed, flowing and shut-in pressures, whether shut-in pressure reached static level, hydrostatic pressures, bottom hole temperature, fluid recovery, and flow rates if gas to surface during test. Attach extra sheet if more space is needed. Attach copy of log.

Drill Stem Tests Taken Yes No
 Samples Sent to Geological Survey Yes No
 Cores Taken Yes No

Formation Description
 Log Sample

Name	Top	Bottom
Base Stone Corral	2790	
Hebener	4120	
Lansing	4179	
Marmaton	4593	
Ft. Scott	4767	
Cherokee	4733	
Atoka	4733	
Morrow	5025	
Keyes	5100	
Mississippian	5194	

CASING RECORD <input checked="" type="checkbox"/> New <input type="checkbox"/> Used							
Report all strings set-conductor, surface, intermediate, production, etc.							
Purpose of String	Size Hole Drilled	Size Casing Set (in O.D.)	Weight Lbs/Ft.	Setting Depth	Type of Cement	#Sacks Used	Type and Percent Additives
Surface	12 1/4	8-5/8	24	439	Common	250	2% gel, 3% cc
PERFORATION RECORD				Acid, Fracture, Shot, Cement Squeeze Record			
Shots Per Foot	Specify Footage of Each Interval Perforated			(Amount and Kind of Material Used)		Depth	
TUBING RECORD				Liner Run <input type="checkbox"/> Yes <input type="checkbox"/> No			
Date of First Production		Producing Method <input type="checkbox"/> Flowing <input type="checkbox"/> Pumping <input type="checkbox"/> Gas Lift <input type="checkbox"/> Other (explain).....					
Estimated Production Per 24 Hours	Oil	Gas	Water	Gas-Oil Ratio	Gravity		
	Bbls	MCF	Bbls	CFPB			

METHOD OF COMPLETION

Production Interval

Disposition of gas: Vented Open Hole Perforation
 Sold Other (Specify)
 Used on Lease Dually Completed
 Commingled

PLAT AND CERTIFICATION OF ACREAGE ATTRIBUTABLE TO AN OIL WELL

State Corporation Commission, Conservation Division
200 Colorado Derby Bldg. Wichita, Kansas 67202

OPERATOR Samuel Gary Jr. & Associates, Inc.

LOCATION OF WELL:

LEASE Pheasant Tail

990 feet from the West line

1980 feet from the South line

WELL NUMBER 30-1 K

Of the SW/4 of Sec 30 T. 15S R. 42W

FIELD SW Stockholm *MA draw only*
c 19,500

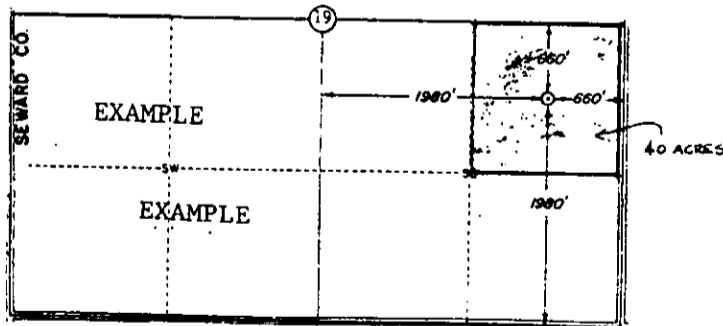
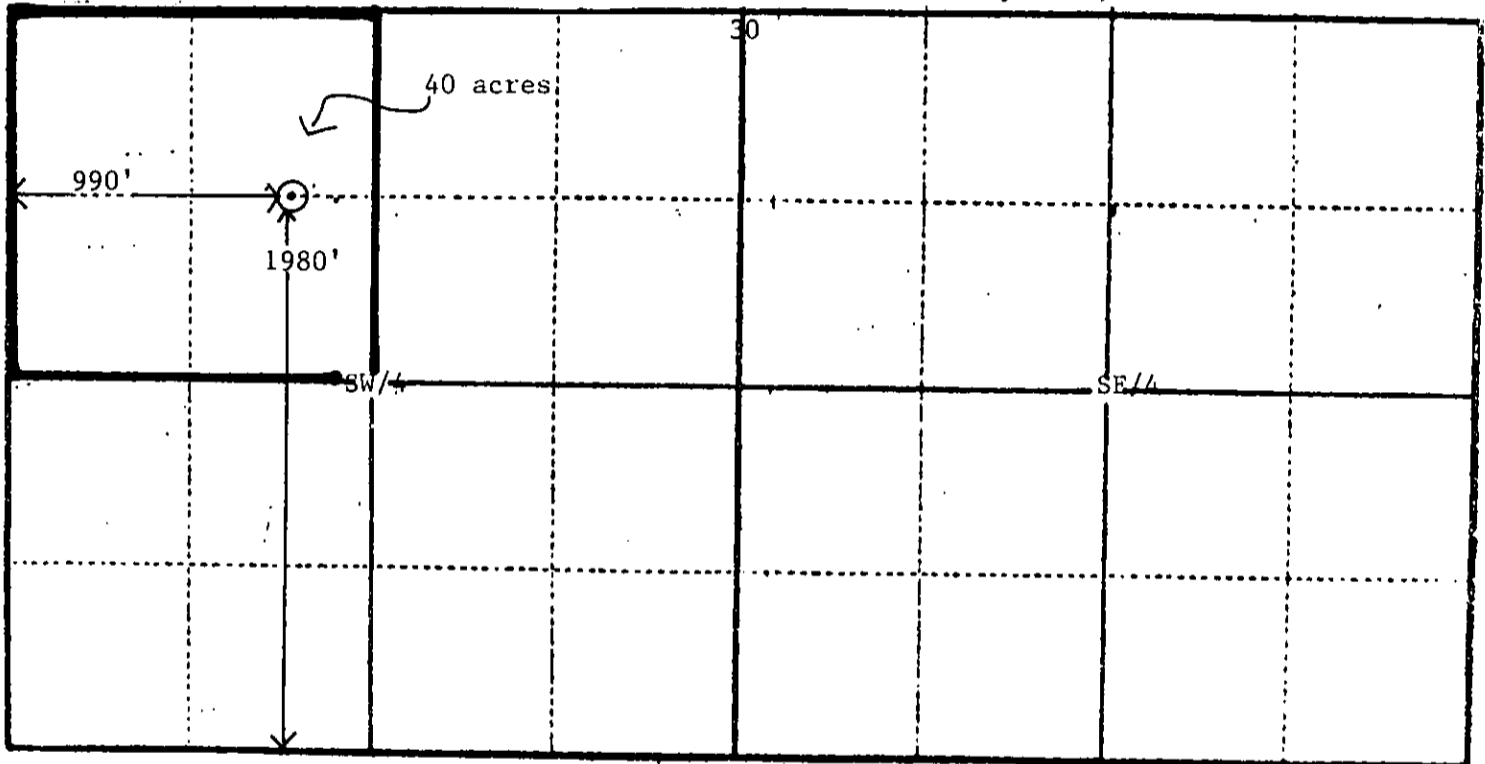
COUNTY Wallace

*NUMBER OF ACRES
ATTRIBUTABLE TO WELL 40

DESCRIPTION OF ACREAGE:

PLAT

(Show location of Well and outline attributable acreage)
(Show footage to nearest lease or unit boundry line)



RECEIVED
STATE CORPORATION COMMISSION

SEP 14 1988

CONSERVATION DIVISION
Wichita, Kansas

The undersigned hereby certifies that he is President
for Samuel Gary Jr. & Associates, Inc., a duly authorized agent, that all information
shown hereon is true and correct to the best of his knowledge and belief, and that
all acreage claimed as attributable to the well named herein is held by production
from that well.

Samuel Gary Jr.
Samuel Gary, Jr., President

Suscribed and sworn to before me on this 12th day of September, 19 88.

James E. Schuff
Notary Public

My Commission expires 3-5-90