

Notice: Fill out COMPLETELY
and return to Conservation Division at
the address below within
60 days from plugging date.

KANSAS CORPORATION COMMISSION
OIL & GAS CONSERVATION DIVISION
WELL PLUGGING RECORD
K.A.R. 82-3-117

Form CP-4
March 2009
Type or Print on this Form
Form must be Signed
All blanks must be Filled

OPERATOR: License #: 8913
Name: Pee Wee Oil Company
Address 1: 1401 108th Rd
Address 2: _____
City: Yates Center State: KS Zip: 66783 + _____
Contact Person: Karen Adams
Phone: (620) 625-2464
Type of Well: (Check one) Oil Well Gas Well OG D&A Cathodic
 Water Supply Well Other: _____ SWD Permit #: _____
 ENHR Permit #: _____ Gas Storage Permit #: _____
Is ACO-1 filed? Yes No If not, is well log attached? Yes No
Producing Formation(s): List All (If needed attach another sheet)
Mississippi Depth to Top: 1667 Bottom: 1686 T.D. 1720
_____ Depth to Top: _____ Bottom: _____ T.D. _____
_____ Depth to Top: _____ Bottom: _____ T.D. _____

API No. 15 - 207-19796 . 00 . 00
Spot Description: _____
NE SW NW SW Sec. 33 Twp. 23 S. R. 14 East West
1,973 Feet from North / South Line of Section
4,665 Feet from East / West Line of Section
Footages Calculated from Nearest Outside Section Corner:
 NE NW SE SW
County: Woodson
Lease Name: W.P. Headley Well #: 29
Date Well Completed: 10/01/1963
The plugging proposal was approved on: 09/08/2011 (Date)
by: Mike Heffron (KCC District Agent's Name)
Plugging Commenced: 09/08/2011
Plugging Completed: 09/08/2011

Show depth and thickness of all water, oil and gas formations.

| Oil, Gas or Water Records | | Casing Record (Surface, Conductor & Production) | | | |
|---------------------------|---------|---|--------|---------------|---------------------|
| Formation | Content | Casing | Size | Setting Depth | Pulled Out |
| Kansas City | Water | | 5 1/2" | | cemented |
| Bartlesville | Water | | 5 1/2" | | cemented |
| Mississippi | Oil | | 5 1/2" | 1720' | cemented to surface |

Describe in detail the manner in which the well is plugged, indicating where the mud fluid was placed and the method or methods used in introducing it into the hole. If cement or other plugs were used, state the character of same depth placed from (bottom), to (top) for each plug set.

Casing (5 1/2") was cemented to top with 350 sacks when well was drilled in 1963. Ran 2 3/8" tuben in casing to bottom and pulled back on top of perforation to 1665'. Well was perforated at (1668' to 1686') Hurricane Well Service pumped gel in the hole and then pumped 15 sks cement down tuben. Pulled tuben to 520' and pumped another 15 sks cement. Pulled tuben to 150' and pumped 33 sks cement to the surface.

Plugging Contractor License #: 6227 Name: Kraft Oil LLC
Address 1: 434 Iris Rd Sw Address 2: _____
City: Gridley State: Ks Zip: 66852 + _____
Phone: (620) 836-4570
Name of Party Responsible for Plugging Fees: Pee Wee Oil Company (Karen Adams)
State of Kansas County, Woodson, ss.
Karen Adams
(Print Name) Employee of Operator or Operator on above-described well,

being first duty sworn on oath, says: That I have knowledge of the facts statements, and matters herein contained, and the log of the above-described well is as filed, and the same are true and correct, so help me God.

Signature: X Karen Adams

Mail to: KCC - Conservation Division, 130 S. Market - Room 2078, Wichita, Kansas 67202

RECEIVED
SEP 19 2011
KCC WICHITA

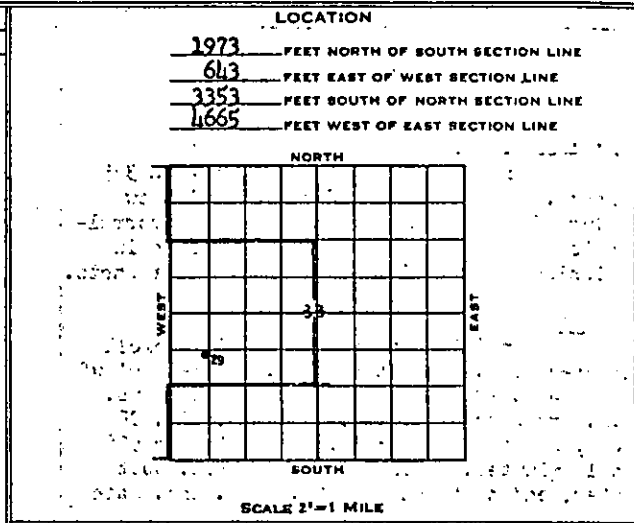
THE PURE OIL COMPANY
WELL LOG AND RELATED DATA

DIVISION Northern Producing DISTRICT Tulsa Area - Virgil Field LEASE Headley, W. P.
ACRES 520 LEASE NO. 34175 AFE NO. 4609-2 ELEVATION Grd. 1134 DF 1135 WELL NO. 29
LOT-SEC. 33 TWP. 23 S RGE. 14 E PRCT.-DIST.-TWP. -
SURVEY - COUNTY Woodson STATE Kansas

| LOG | | | |
|---------------------|-----------------------|-------|---|
| FROM | TO | TOTAL | FORMATION |
| 0 | 525 | 525 | Shale w/thin interbedded shale streaks (E.L. TOP) |
| 525 | <u>KANSAS CITY</u> | | |
| 525 | 732 | 207 | Limestone w/thin shale stringers |
| 732 | 792 | 60 | Sand |
| 792 | 846 | 54 | Shale |
| 846 | 973 | 127 | Limestone w/thin shale stringers (E.L. TOP) |
| 973 | <u>MARMATON</u> | | |
| 973 | 996 | 23 | Shale |
| 996 | 1004 | 8 | Sand |
| 1004 | 1305 | 301 | Shale w/thin limestone stringers (E.L. TOP) |
| 1305 | <u>SQUIRREL</u> | | |
| 1305 | 1311 | 6 | Sand |
| 1311 | <u>CHEROKEE</u> | | |
| 1311 | 1405 | 94 | Shale (E.L. TOP) |
| 1405 | <u>CATTLEMAN SAND</u> | | |
| 1405 | 1427 | 22 | Sand (E.L. TOP) |
| 1427 | 1554 | 127 | Shale |
| 1554 | <u>BARTLESVILLE</u> | | |
| 1554 | 1574 | 20 | Sand (E.L. TOP) |
| 1574 | 1667 | 93 | Shale |
| 1667 | <u>MISSISSIPPI</u> | | |
| 1667 | 1686 | 19 | Dolomite (E.L. TOP) |
| 1686 | 1725 | 39 | Limestone |
| 1725 | | | <u>TOTAL DEPTH</u> |
| <u>PLUGGED BACK</u> | | | |
| 1725 | 1720 | 5 | (Cmt. in 5 1/2" casing) |

(All measurements taken from ground level)

1668 1686 PAY ZONE



| CASING AND CEMENTING RECORD | | | |
|-----------------------------------|--------|--------|--|
| SIZE CASING | 8-5/8" | 5 1/2" | |
| THREAD | 8V | 8rd | |
| WEIGHT | 24# | 15# | |
| GRADE | IP | H-40 | |
| CONDITION | D | B | |
| SET AT | 20 | 1722 | |
| BACKS CEMENT | 5 | 375 | |
| SIZE OF HOLE | 11" | 7 7/8" | |
| 5 1/2" casing cemented to surface | | | |

| LINER RECORD | | | | | | |
|--------------|-----|-------|--------|-------|-------|--------|
| SIZE | WT. | COND. | LENGTH | BLANK | PERF. | SET AT |
| | | | | | | |
| | | | | | | |

| GUN PERFORATING RECORD | | | | | |
|------------------------|--------|------|------|------------|-----------|
| DATE | CASING | FROM | TO | SIZE SHOTS | NO. SHOTS |
| 10/6/63 | 5 1/2 | 1668 | 1686 | Link Jet | 54 |
| | | | | | |

| SHOT OR ACID RECORD | | | | |
|---------------------|------|--------|-----------|---------|
| DATE | TOP | BOTTOM | SHOT/ACID | REMARKS |
| 10/15/63 | 1668 | 1686 | 1000 G. | |
| | | | | |

DRILLING: COMMENCED 9/25/63 COMPLETED 10/1/63
ELECTRICAL SURVEY BY (1) DATE _____
DRILLED WITH (Fees Drlg. Co.) Rotary TOOLS _____
DRILLED IN WITH (Fees Drlg. Co.) Rotary TOOLS _____
FIRST PROD. - NAT. DATE (2) HRS. _____ BBLs. _____ OIL _____
WATER _____ H CU. FT. GAS _____ LBS. ROCK PRESS. _____
FIRST PROD. AFTER ACID - DATE _____ HRS. _____ BBLs. _____ OIL _____
WATER _____ H CU. FT. GAS _____ LBS. ROCK PRESS. _____
GAS/OIL RATIO _____ POTENTIAL _____ BBLs. _____
GRAVITY _____ TEMP. _____ GRADE _____

- (1) Welox (Electric - 1723 - 10/2/63
Contact Caliper - 1724 - 10/2/63)
- (2) To be produced by waterflooding

RECEIVED
SEP 19 2011
KCC WICHITA

| FROM | TO | TOTAL | FORMATION | FROM | TO | TOTAL | FORMATION |
|--|----|-------|-----------------------------|------|----|-------|-----------|
| ADDITIONAL WELL DATA | | | | | | | |
| ANGULAR DEVIATIONS | | | | | | | |
| DEPTH | | | DEGREES OFF VERTICAL | | | | |
| 531 | | | 1 | | | | |
| 996 | | | 1 | | | | |
| 1608 | | | 1/2 | | | | |
| P.B. & PERFORATE | | | | | | | |
| Set 5 1/2" casing at 1722' with 375 sacks. Top of cement plug at 1720', New plugged back total depth. Welox ran correlation log and perforated 5 1/2" casing in Mississippi Line 1668-1686 with 54 jet shots. | | | | | | | |
| ACID: 10/15/63 | | | | | | | |
| Ran 2 7/8" tubing to 1688'. Dwell treated Miss. lime thru perf. 1668'-1686' w/ 1000 gals. XW 15% acid and 54 ball sealers. B.D. pressure 500#, Max. TP 1000#, Min. TP 500#, Immediate SIP 300#, decreasing to 50# in 15 minutes. Flushed with 22 bbls. salt water, ending flush at 550#. Avg. Inj. Rate 4 BPM. | | | | | | | |

RECEIVED
 SEP 19 2011
 KCC WICHITA

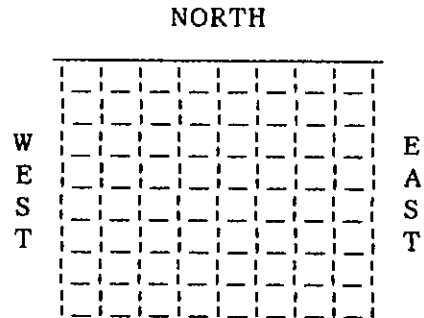
WELL LOG AND RELATED DATA

DIVISION_NORTHER PRODUC. DISTRICT_OKLAHOMA CITY LEASE_HEADLEY, W.P.
 ACRES_520 LEASE No._34175_AFE No._4609-2_ELEVATION_GRD. 1134 WELL No._29
 LOT-SEC._33 TWP._23 S RGE._14 E PRCT.-DIST.-TWP NA
 SURVEY NA COUNTY_WOODSON STATE_KANSAS

| LOG | | | FORMATION |
|------|------|-------|--|
| FROM | TO | TOTAL | |
| 0 | 525 | 525 | SHALE W/THIN INTERBEDED SHALE STRINGERS (E.L. TOP) |
| 525 | 525 | 207 | LIMESTONE WITH THIN SHALE STRINGERS |
| 732 | 792 | 60 | SAND |
| 792 | 846 | 54 | SHALE |
| 846 | 973 | 127 | LIMESTONE WITH THIN SHALE STRINGERS (E.L. TOP) |
| 973 | 973 | 23 | SHALE |
| 996 | 1004 | 8 | SAND |
| 1004 | 1305 | 301 | SHALE W/THIN LIMESTONE STRINGERS (E.L. TOP) |
| 1305 | 1305 | 6 | SAND |
| 1311 | 1311 | 94 | SHALE (E.L. TOP) |
| 1311 | 1405 | 22 | SAND (E.L. TOP) |
| 1405 | 1405 | 127 | SHALE (E.L. TOP) |
| 1427 | 1427 | 20 | SAND |
| 1427 | 1544 | 93 | SHALE (E.L. TOP) |
| 1544 | 1544 | 20 | SAND |
| 1574 | 1574 | 93 | SHALE (E.L. TOP) |
| 1667 | 1667 | 19 | DOLOMITE |
| 1686 | 1686 | 39 | LIMESTONE |
| 1725 | 1725 | | TOTAL DEPTH |
| 1725 | 1720 | 5 | (Cmt. in 5 1/2" casing) |
| 1668 | 1686 | | PAY ZONE |

(All measurements taken from ground level)

LOCATION
 1973 FEET NORTH OF SOUTH SECTION LINE
 643 FEET EAST OF WEST SECTION LINE
 3353 FEET SOUTH OF NORTH SECTION LINE
 4665 FEET WEST OF EAST SECTION LINE



| CASING AND CEMENTING RECORD | | |
|-----------------------------|--------|--------|
| SIZE | 8-5/8" | 5-1/2" |
| THREAD | 8V | 8RD |
| WEIGHT | 24# | 15# |
| GRADE | LP | H-40 |
| CONDITION | D | B |
| SET AT | 20 | 1722 |
| SACKS OF CEMENT | 5 | 375 * |
| SIZE OF HOLE | 11" | 7-7/8" |

DRILLING START: 9-26-63 END: 10-1-63
 ELECTRIC SERVEY (1) DATE
 DRILLED WITH FEES DRLG. CO. TOOLS
 DRILLED IN WITH (SAME) TOOLS

| GUN PERFORATING RECORD | | | | | |
|------------------------|--------|------|------|----------|-----|
| DATE | CASING | FROM | TO | SIZE | NO. |
| 10/6/63 | 5-1/2" | 1668 | 1686 | LINK JET | 54 |

(1) WELEX ELECTRIC - 1773 - 10/2/63
 CONTACT CALIPER- 1724 - 10/2/63
 (*) 5-1/2" CEMENTED TO SURFACE