

FORM MUST BE TYPED

SIDE ONE

071

ORIGINAL

STATE CORPORATION COMMISSION OF KANSAS
OIL & GAS CONSERVATION DIVISION
WELL COMPLETION FORM
ACO-1 WELL HISTORY
DESCRIPTION OF WELL AND LEASE

Operator: License # 04570

Name: Samedan Oil Corporation

Address Suite 1020

3817 N.W. Expressway

City/State/Zip Oklahoma City, OK 73112

Purchaser: N/A

Operator Contact Person: Debbie Kerr

Phone (405) 942-8707

Contractor: Name: Abercrombie RTD, Inc.

License: 30684

Wellsite Geologist: Randy Say

Designate Type of Completion

New Well Re-Entry Workover

Oil SWD SIOW Temp. Abd.

Gas ENHR SIGW

Dry Other (Core, WSW, Expl., Cathodic, etc.)

If Workover/Re-Entry: old well info as follows: N/A

Operator: _____

Well Name: _____

Comp. Date _____ Old Total Depth _____

Deepening Re-perf. Conv. to Inj/SWD

Plug Back PSTD

Commingled Docket No. _____

Dual Completion Docket No. _____

Other (SWD or Inj?) Docket No. _____

2/25/95 3/6/95 3/7/95

Spud Date Date Reached TD Completion Date

API NO. 15- 017-20634-0000

County Greeley

- NW - SW - SE Sec. 5 Twp. 19S Rgs. 42 XX ^E

1000' Feet from S/W (circle one) Line of Section

2100' Feet from E/W (circle one) Line of Section

Footages Calculated from Nearest Outside Section Corner:
NE, SE NW or SW (circle one)

Lease Name Vern Well # 1-5

Field Name Wildcat

Producing Formation N/A

Elevation: Ground 3818' KB 3823'

Total Depth 5330' PSTD _____

Amount of Surface Pipe Set and Cemented at 298' Feet

Multiple Stage Cementing Collar Used? Yes No

If yes, show depth set _____ Feet

If Alternate II completion, cement circulated from 298

feet depth to Surface w/ 225 xx cmt.

Drilling Fluid Management Plan D&A JH 12-28-95
(Data must be collected from the Reserve Pit)

Chloride content 29,000 ppm Fluid volume 4,000 bbls

Dewatering method used Evaporation

Location of fluid disposal if hauled offsite: _____

Operator Name N/A

Lease Name _____ License No. _____

Quarter _____ Sec. _____ Twp. _____ S Rng. _____ E/W

County _____ Docket No. _____

INSTRUCTIONS: An original and two copies of this form shall be filed with the Kansas Corporation Commission, 200 Colorado Derby Building, Wichita, Kansas 67202, within 120 days of the spud date, recompletion, workover or conversion of a well. Rule 82-3-130, 82-3-106 and 82-3-107 apply. Information on side two of this form will be held confidential for a period of 12 months if requested in writing and submitted with the form (see rule 82-3-107 for confidentiality in excess of 12 months). One copy of all wireline logs and geologist well report shall be attached with this form. ALL CEMENTING TICKETS MUST BE ATTACHED. Submit CP-4 form with all plugged wells. Submit CP-1113 form with all temporarily abandoned wells.

All requirements of the statutes, rules and regulations promulgated to regulate the oil and gas industry have been fully complied with and the statements herein are complete and correct to the best of my knowledge.

Signature Debbie Kerr
Production Clerk Date 3/15/95

I hereby declare and swear to before me this 15th day of March

Carol Corey
Notary Public
Date Commission Expires 10-29-96

RECEIVED
STATE CORPORATION COMMISSION
MAR 17 1995
K.C.C. OFFICE USE ONLY
 Letter of Confidentiality Attached
 Wireline Log Received
 Geologist Report Received
Distribution
 KCC SWD/Rep KCPA
 KGS Plug Other
(Specify)

Operator Name Samedan Oil Corporation

Lease Name Vern

Well # 1-5²

Sec. 5 Twp. 19S Rge. 42

East
 West

County Greeley

INSTRUCTIONS: Show important tops and base of formations penetrated. Detail all cores. Report all drill stem tests giving interval tested, time tool open and closed, flowing and shut-in pressures, whether shut-in pressure reached static level, hydrostatic pressures, bottom hole temperature, fluid recovery, and flow rates if gas to surface during test. Attach extra sheet if more space is needed. Attach copy of log.

Drill Stem Tests Taken Yes No
(Attach Additional Sheets.)

Pls. see attached Samples Sent to Geological Survey Yes No

Cores Taken Yes No

Electric Log Run (Submit Copy.) Yes No

List All E.Logs Run: Compensated Z-Density
Compensated Neutron Gamma Ray Log &
Dual Phase Induction Spherically Focused
Log Gamma Ray

Name	Formation (Top), Depth and Datum	
	Top	Datum
Atoka	4894'	(-1071)
Morrow Shale	5030'	(-1207)
Morrow Sand	5054'	(-1231)
Middle Morrow	5116'	(-1293)
St. Louis	5190'	(-1267)

CASING RECORD

New Used

Report all strings set-conductor, surface, intermediate, production, etc.

Purpose of String	Size Hole Drilled	Size Casing Set (in O.D.)	Weight Lbs./Ft.	Setting Depth	Type of Cement	# Sacks Used	Type and Percent Additives
Surface	12 1/4"	8 5/8"	24#	298'	60-40 p/z.	225	3% CaCl & 2% gel

ADDITIONAL CEMENTING/SQUEEZE RECORD See Plugging Record

Purpose:	Depth Top Bottom	Type of Cement	#Sacks Used	Type and Percent Additives
<input type="checkbox"/> Perforate				
<input type="checkbox"/> Protect Casing				
<input type="checkbox"/> Plug Back TD				
<input type="checkbox"/> Plug Off Zone				

Shots Per Foot	PERFORATION RECORD - Bridge Plugs Set/Type Specify Footage of Each Interval Perforated	Acid, Fracture, Shot, Cement Squeeze Record (Amount and Kind of Material Used)	Depth
N/A	N/A	N/A	

TUBING RECORD	Size	Set At	Packer At	Liner Run
	N/A	N/A	N/A	<input type="checkbox"/> Yes <input checked="" type="checkbox"/> No

Date of First, Resumed Production, SWD or Inj.	Producing Method
N/A	<input type="checkbox"/> Flowing <input type="checkbox"/> Pumping <input type="checkbox"/> Gas Lift <input type="checkbox"/> Other (Explain)

Estimated Production Per 24 Hours	Oil Bbls.	Gas Mcf	Water Bbls.	Gas-Oil Ratio	Gravity
	N/A	N/A	N/A		

Disposition of Gas: N/A METHOD OF COMPLETION N/A Production Interval N/A

Vented Sold Used on Lease (If vented, submit ACO-18.)

Open Hole Perf. Dually Comp. Casingled

Other (Specify) _____

TRILOBITE TESTING, L.L.C.

P.O. Box 362 • Hays, Kansas 67601

Drill-Stem Test Data

API # 15-D17-20634-00-00

Well Name VERN #1-5 Test No. 1 Date 3/3/95
Company SAMEDAN OIL CORPORATION Zone MORROW
Address 3817 NW EXPRESSWAY #1020, OK CITY, OK 73112 Elevation 2900
Co. Rep./Geo. DAVIE Cont. ABERCROMBIE #4 Est. Ft. of Pay _____
Location: Sec. 5 Twp. 19S Rge. 42W Co. GREELEY State KS

Interval Tested	<u>5018-5070</u>	Drill Pipe Size	<u>4.5" XH</u>
Anchor Length	<u>52</u>	Wt. Pipe I.D. - 2.7 Ft. Run	<u>319</u>
Top Packer Depth	<u>5013</u>	Drill Collar - 2.25 Ft. Run	_____
Bottom Packer Depth	<u>5018</u>	Mud Wt.	<u>9.2</u> lb/Gal.
Total Depth	<u>5070</u>	Viscosity	<u>49</u> Filtrate <u>9.6</u>

Tool Open @ 3:55PM Initial Blow WEAK SURFACE BLOW STEADY THROUGHOUT.

Final Blow SURGE BLOW AT OPEN - NO RETURN BLOW.

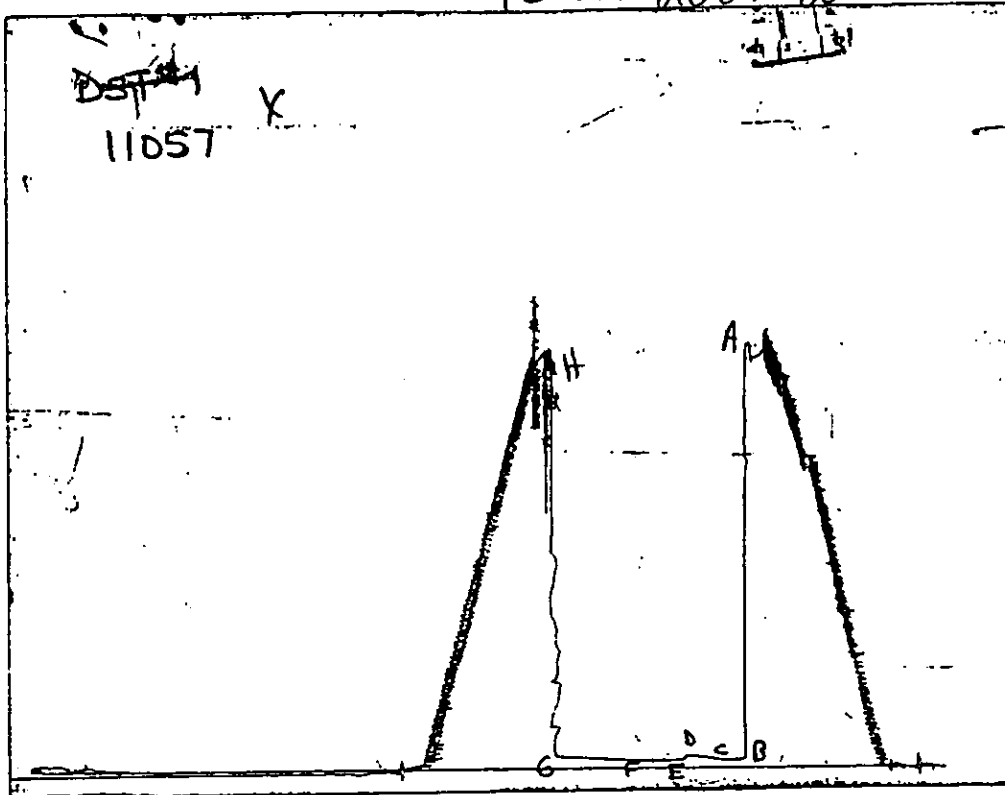
Recovery - Total Feet 15 Flush Tool? NO

Rec. <u>15</u>	Feet of	<u>DRILLING MUD</u>
Rec. _____	Feet of	_____
Rec. _____	Feet of	_____
Rec. _____	Feet of	_____
Rec. _____	Feet of	_____

BHT 116 °F Gravity _____ °API @ _____ °F Corrected Gravity _____ °API
RW _____ @ _____ °F Chlorides _____ ppm Recovery Chlorides 7500 ppm System

(A) Initial Hydrostatic Mud	<u>2461.50</u> PSI	AK1 Recorder No.	<u>11057</u>	Range	<u>4500</u>
(B) First Initial Flow Pressure	<u>46.00</u> PSI	@ (depth)	<u>5033</u>	w / Clock No.	<u>22347</u>
(C) First Final Flow Pressure	<u>46.00</u> PSI	AK1 Recorder No.	<u>11058</u>	Range	<u>4500</u>
(D) Initial Shut-in Pressure	<u>76.20</u> PSI	@ (depth)	<u>5065</u>	w / Clock No.	<u>21048</u>
(E) Second Initial Flow Pressure	<u>49.30</u> PSI	AK1 Recorder No.	_____	Range	_____
(F) Second Final Flow Pressure	<u>49.30</u> PSI	@ (depth)	_____	w / Clock No.	_____
(G) Final Shut-in Pressure	<u>74.00</u> PSI	Initial Opening	<u>15</u>	Final Flow	<u>30</u>
(H) Final Hydrostatic Mud	<u>2417.40</u> PSI	Initial Shut-in	<u>30</u>	Final Shut-in	<u>60</u>

Our Representative ROD STEINBRINK



This is an actual photograph of an AK1 recorder chart

	FIELD READING	OFFICE READING
(A) INITIAL HYDROSTATIC MUD	2457	2461.50
(B) FIRST INITIAL FLOW PRESSURE	33	46.00
(C) FIRST FINAL FLOW PRESSURE	33	46.00
(D) INITIAL CLOSED-IN PRESSURE	67	76.20
(E) SECOND INITIAL FLOW PRESSURE	44	49.30
(F) SECOND FINAL FLOW PRESSURE	44	49.30
(G) FINAL CLOSED-IN PRESSURE	67	74.00
(H) FINAL HYDROSTATIC MUD	2411	2417.40

FLUID SAMPLER DATA

15-071-20634-00-00

Ticket No.: 7509

Date: 3/3/95

Company: SAMEDAN OIL CORPORATION

Lease: VERN #1-5

Test No.: 1

County: GREELEY

Sec.: 5

Twp.: 19S

Rng.: 42W

SAMPLER RECOVERY

Gas ML

Oil ML

Mud 4000 ML

Water ML

Other ML

Pressure 20 PSI

TOTAL 4000 ML

SAMPLER ANALYSIS

Resistivity .70 ohms@ 78 F

Chlorides 7500 ppm.

Gravity corrected @60F

PIT MUD ANALYSIS

Chlorides 7500

Resistivit .70 ohms@ 78 F

Viscosity 49

Mud Wt. 9.2

Filtrate 9.6

Other LCM 1#/BBL

PIPE RECOVERY

TOP

Resistivit ohms@ F

Chlorides ppm.

MIDDLE

Resistivit ohms@ F

Chlorides ppm.

BOTTOM

Resistivit ohms@ F

Chlorides ppm.

TRILOBITE TESTING L.L.C.

P.O. Box 362 • Hays, Kansas 67601

15-071-20634-00-00

No 7509

Test Ticket

Bill to Abercrombie

Well Name & No. Vern #1-5 Test No. 1 Date 3-3-95
 Company Samedan Oil Corporation Zone Tested Morrow
 Address Ste. 1020 3817 N.W. Expressway Okla City OK 73112 Elevation 2900 (KB)
 Co. Rep./Geo. Davis cont. Abercrombie #4 Est. Ft. of Pay _____
 Location: Sec. 5 Twp. 19^S Rge. 42^W Co. Greeley State KS
 No. of Copes 6 Distribution Sheet _____ Yes X No Turnkey X Yes _____ No _____ Evaluation _____

Interval Tested 5018 - 5070 Drill Pipe Size 4 1/2" XH
 Anchor Length 52' Top Choke — 1" _____ Bottom Choke — 3/4" _____
 Top Packer Depth 5013 Hole Size — 7 7/8" _____ Rubber Size — 6 3/4" _____
 Bottom Packer Depth 5018 Wt. Pipe I.D. — 2.7 Ft. Run 319'
 Total Depth 5070 Drill Collar — 2.25 Ft. Run _____
 Mud Wt. 9.2 lb/gal. Viscosity 49 Filtrate 9.6
 Tool Open @ 3:55 pm Initial Blow Weak surface blow steady throughout.

Final Blow Surge blow @ open - no return blow.

Recovery — Total Feet	Feet of Gas In Pipe	Flush Tool?
<u>15'</u>	_____	<u>No</u>
Rec. _____ Feet Of _____	%gas _____ %oil _____ %water _____ %mud _____	
Rec. <u>15'</u> Feet Of <u>Drilg. Mud</u>	%gas _____ %oil _____ %water _____ %mud _____	
Rec. _____ Feet Of _____	%gas _____ %oil _____ %water _____ %mud _____	
Rec. _____ Feet Of _____	%gas _____ %oil _____ %water _____ %mud _____	

BHT 116° °F Gravity _____ °API @ _____ °F Corrected Gravity _____ °API

RW _____ @ _____ °F Chlorides _____ ppm Recovery Chlorides 7,500 ppm System

- (A) Initial Hydrostatic Mud 2457 PSI Ak1 Recorder No. 11057 Range 4500
- (B) First Initial Flow Pressure 33 PSI @ (depth) 5033 w/Clock No. 22347
- (C) First Final Flow Pressure 33 PSI AK1 Recorder No. 11058 Range 4500
- (D) Initial Shut-In Pressure 67 PSI @ (depth) 5065 w/Clock No. 21048
- (E) Second Initial Flow Pressure 44 PSI AK1 Recorder No. _____ Range _____
- (F) Second Final Flow Pressure 44 PSI @ (depth) _____ w/Clock No. _____
- (G) Final Shut-In Pressure 67 PSI Initial Opening 15 Test _____
- (H) Final Hydrostatic Mud 2411 PSI Initial Shut-In 30 Jars X

TRILOBITE TESTING L.L.C. SHALL NOT BE LIABLE FOR DAMAGE OF ANY KIND OF THE PROPERTY OR PERSONNEL OF THE ONE FOR WHOM A TEST IS MADE, OR FOR ANY LOSS SUFFERED, OR SUSTAINED, DIRECTLY OR INDIRECTLY, THROUGH THE USE OF ITS EQUIPMENT, OR ITS STATEMENTS OR OPINION CONCERNING THE RESULTS OF ANY TEST. TOOLS LOST OR DAMAGED IN THE HOLE SHALL BE PAID FOR AT COST BY THE PARTY FOR WHOM THE TEST IS MADE.

Final Flow 30 Safety Joint X
 Final Shut-In 60 Straddle _____
 Circ. Sub X W/C
 Sampler X
 Extra Packer _____
 Other _____

Approved By _____
 Our Representative Rod Steinbrink

TOTAL PRICE \$ _____

15-071-20634-00-00

TRILOBITE TESTING L.L.C.

P.O. Box 362 - Hays, Kansas 67601

FLUID SAMPLER DATA

Ticket No. 7509 Date 3-3-95
 Company Name Samedan Oil Corp. Cont. Abercrombie #4
 Lease Vern #1-5 Test No. 1 Morrow V-3
 County Greeley KS. Sec. 5 Twp. 19^S Rng. 42^W

SAMPLER RECOVERY

Gas - ML
 Oil - ML
 Mud 4,000 ML
 Water - ML
 Other _____ ML
 Pressure 20[#] PSI
 Total 4,000 ML

PIT MUD ANALYSIS

Chlorides 7,500 ppm.
 Resistivity .70 ohms @ 78° F
 Viscosity 49
 Mud Weight 9.2
 Filtrate 9.6
 Other L.C.M. 1#/bbl

SAMPLER ANALYSIS

Resistivity .70 ohms @ 78° F
 Chlorides 7,500 ppm.
 Gravity _____ corrected @ 60 F

PIPE RECOVERY

TOP
 Resistivity _____ ohms @ _____ F
 Chlorides _____ ppm.

MIDDLE
 Resistivity _____ ohms @ _____ F
 Chlorides _____ ppm.

BOTTOM
 Resistivity _____ ohms @ _____ F
 Chlorides _____ ppm.

TRILOBITE TESTING, L.L.C.

P.O. Box 362 • Hays, Kansas 67601

Drill-Stem Test Data API # 15-017-20634-00-00

Well Name VERN #1-5 Test No. 2 Date 3/4/95
Company SAMEDAN OIL CORPORATION Zone V-7
Address 3817 NW EXPRESSWAY #1020, OK CITY, OK 73112 Elevation 2900
Co. Rep./Geo. DAVIE Cont. ABERCROMBIE #4 Est. Ft. of Pay _____
Location: Sec. 5 Twp. 19S Rge. 42W Co. GREELEY State KS

Interval Tested 5016-5140 Drill Pipe Size 4.5" XH
Anchor Length 124 Wt. Pipe I.D. - 2.7 Ft. Run 319
Top Packer Depth 5011 Drill Collar - 2.25 Ft. Run _____
Bottom Packer Depth 5016 Mud Wt. 9.3 lb/Gal.
Total Depth 5140 Viscosity 49 Filtrate 9.6

Tool Open @ 11:43AM Initial Blow WEAK SURFACE BLOW, 1/4 INCH. STEADY THROUGHOUT.

INITIAL SHUT IN: NO RETURN BLOW.

Final Blow BUBBLE TO OPEN TOOL. FINAL SHUT IN: NO RETURN BLOW.

Recovery - Total Feet 40 Flush Tool? NO

Rec. 40 Feet of DRILLING MUD, 100% MUD

Rec. _____ Feet of _____

Rec. _____ Feet of _____

Rec. _____ Feet of _____

Rec. _____ Feet of _____

BHT 119 °F Gravity _____ °API @ _____ °F Corrected Gravity _____ °API

RW _____ @ _____ °F Chlorides _____ ppm Recovery Chlorides 8500 ppm System

(A) Initial Hydrostatic Mud 2555.40 PSI AK1 Recorder No. 11057 Range 4500

(B) First Initial Flow Pressure 75.10 PSI @ (depth) 5023 w / Clock No. 22347

(C) First Final Flow Pressure 75.10 PSI AK1 Recorder No. 11058 Range 4500

(D) Initial Shut-in Pressure 409.20 PSI @ (depth) 5135 w / Clock No. 21048

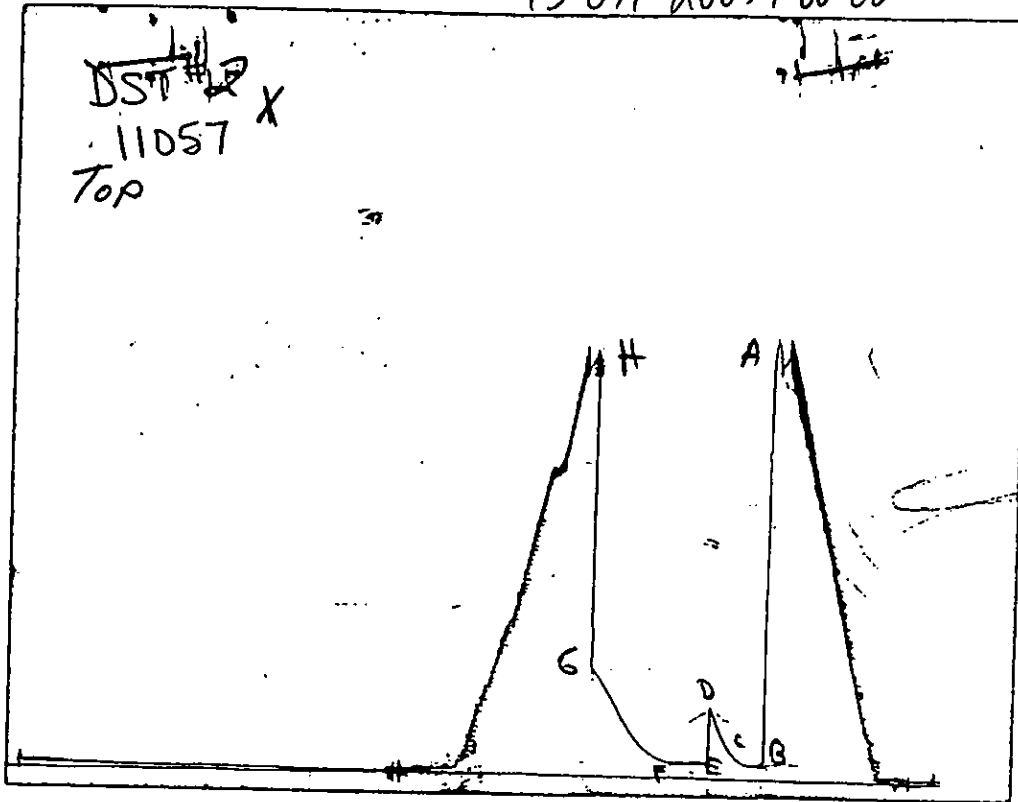
(E) Second Initial Flow Pressure 76.20 PSI AK1 Recorder No. _____ Range _____

(F) Second Final Flow Pressure 76.20 PSI @ (depth) _____ w / Clock No. _____

(G) Final Shut-in Pressure 603.80 PSI Initial Opening 15 Final Flow 30

(H) Final Hydrostatic Mud 2457.00 PSI Initial Shut-in 30 Final Shut-in 60

Our Representative SHANE MCBRIDE



This is an actual photograph of an AK1 recorder chart

	FIELD READING	OFFICE READING
(A) INITIAL HYDROSTATIC MUD	2524	2555.40
(B) FIRST INITIAL FLOW PRESSURE	89	75.10
(C) FIRST FINAL FLOW PRESSURE	89	75.10
(D) INITIAL CLOSED-IN PRESSURE	403	409.20
(E) SECOND INITIAL FLOW PRESSURE	89	76.20
(F) SECOND FINAL FLOW PRESSURE	89	76.20
(G) FINAL CLOSED-IN PRESSURE	604	603.80
(H) FINAL HYDROSTATIC MUD	2434	2457.00

FLUID SAMPLER DATA

15-071-20634-00-00

Ticket No.: 7510

Date: 3/4/95

Company: SAMEDAN OIL CORPORATION

Lease: VERN #1-5

Test No.: 2

County: GREELEY

Sec.: 5

Twp.: 19S

Rng.: 42W

SAMPLER RECOVERY

Gas ML

Oil ML

Mud 4000 ML

Water ML

Other ML

Pressure 125 PSI

TOTAL 4000 ML

PIT MUD ANALYSIS

Chlorides 8500

Resistivit .62 ohms@ 80 F

Viscosity 49

Mud Wt. 9.3

Filtrate 9.6

Other

SAMPLER ANALYSIS

Resistivity 0.62 ohms@ 80 F

Chlorides 8500 ppm.

Gravity corrected @60F

PIPE RECOVERY

TOP

Resistivit ohms@ F

Chlorides ppm.

MIDDLE

Resistivit ohms@ F

Chlorides ppm.

BOTTOM

Resistivit ohms@ F

Chlorides ppm.

TRILOBITE TESTING L.L.C.

P.O. Box 362 • Hays, Kansas 67601

15-071-20634-00-00

No 7510

Test Ticket

Well Name & No. Vern #1-5 Test No. 2 Date 3-4-95
 Company Samedan Oil Corporation Zone Tested V-7
 Address 1020 3817 N.W. Expressway OKla. City OK, 73112 Elevation 2900 KB
 Co. Rep./Geo. Davie Cont. Abercrombie #4 Est. Ft. of Pay _____
 Location: Sec. 5 Twp. 19^s Rge. 42W Co. Greeley State K5
 No. of Copies 10 Distribution Sheet _____ Yes X No Turnkey X Yes _____ No _____ Evaluation _____

Interval Tested 5016 - 5140 Drill Pipe Size 4 1/2 X H
 Anchor Length 124' Top Choke - 1" _____ Bottom Choke - 1/4" _____
 Top Packer Depth 5011' Hole Size - 7 7/8" _____ Rubber Size - 6 3/4" _____
 Bottom Packer Depth 5016' Wt. Pipe I.D. - 2.7 Ft. Run 319'
 Total Depth 5140' Drill Collar - 2.25 Ft. Run _____
 Mud Wt. 9.3 lb/gal. Viscosity 49 Filtrate 9.6
 Tool Open @ 11:43 am Initial Blow WEEK SURFACE BLOW 4 IN. Steady throughout

F.S.I. No return Blow
 Final Blow Bubble to open tool,
F.S.I. No return Blow

Recovery - Total Feet 40' Feet of Gas In Pipe _____ Flush Tool? NO

Rec.	Feet Of	%gas	%oil	%water	%mud
<u>40'</u>	<u>DM</u>			<u>100</u>	
_____	_____				
_____	_____				
_____	_____				
_____	_____				

BHT 119 °F Gravity _____ °API @ _____ °F Corrected Gravity _____ °API
 RW _____ @ _____ °F Chlorides _____ ppm Recovery Chlorides 8500 ppm System

(A) Initial Hydrostatic Mud 2524 PSI AK1 Recorder No. 11057 Range 4500
 (B) First Initial Flow Pressure 89 PSI @ (depth) 5023 w/Clock No. 22347
 (C) First Final Flow Pressure 89 PSI AK1 Recorder No. 11058 Range 4500
 (D) Initial Shut-In Pressure 403 PSI @ (depth) 5135 w/Clock No. 21048
 (E) Second Initial Flow Pressure 89 PSI AK1 Recorder No. _____ Range _____
 (F) Second Final Flow Pressure 89 PSI @ (depth) _____ w/Clock No. _____
 (G) Final Shut-In Pressure 604 PSI Initial Opening 15 Test _____
 (H) Final Hydrostatic Mud 2434 PSI Initial Shut-In 30 Jars X

Final Flow 30 Safety Joint X
 Final Shut-In 60 Straddle _____
 Circ. Sub X N/C
 Sampler X
 Extra Packer _____
 Other _____

Approved By [Signature]
 Our Representative [Signature]
 TOTAL PRICE \$ _____

15-071-20634-00-00

TRILOBITE TESTING L.L.C.

P.O. Box 362 - Hays, Kansas 67601

FLUID SAMPLER DATA

Ticket No. 2 Date 3-4-95
 Company Name Samedan Oil Corporation
 Lease Verw[#] 1-5 Test No. 2
 County Greely Sec. 5 Twp. 19^s Rng. 42^w

SAMPLER RECOVERY

Gas — ML
 Oil — ML
 Mud 4000 ML
 Water — ML
 Other — ML
 Pressure 125[#] PSI
 Total 4000 ML

PIT MUD ANALYSIS

Chlorides 8500 ppm.
 Resistivity .62 ohms @ 80 F
 Viscosity 49
 Mud Weight 9.3
 Filtrate 9.6
 Other —

SAMPLER ANALYSIS

Resistivity .62 ohms @ 80 F
 Chlorides 8500 ppm.
 Gravity — corrected @ 60 F

PIPE RECOVERY

TOP
 Resistivity — ohms @ — F
 Chlorides — ppm.

MIDDLE
 Resistivity — ohms @ — F
 Chlorides — ppm.

BOTTOM
 Resistivity — ohms @ — F
 Chlorides — ppm.

ALLIED CEMENTING CO., INC.

15-071-20634-00-00
SERVICE POINT: Oakley

REMIT TO P.O. BOX 31
RUSSELL, KANSAS 67665

DATE <u>2-25-95</u>	SEC. <u>5</u>	TWP. <u>19</u>	RANGE <u>42</u>	CALLED OUT	ON LOCATION <u>5:45 PM</u>	JOB START <u>9:45 PM</u>	JOB FINISH <u>10:00 PM</u>
LEASE <u>Yes</u>		WELL # <u>1-5</u>	LOCATION <u>Tribune 10W-4S-1W-1N-4E</u>		COUNTY <u>Grealey</u>	STATE <u>Kan</u>	
OLD OR NEW (Circle one)							

CONTRACTOR Abaccambie R.T.D #4

TYPE OF JOB Surf Face

HOLE SIZE 12 1/4 I.D. 298'

CASING SIZE DEPTH 298'

TUBING SIZE DEPTH

DRILL PIPE DEPTH

TOOL DEPTH

PRES. MAX MINIMUM

MEAS. LINE SHOE JOINT

CEMENT LEFT IN CSG. 15'

PERFS. 18 1/4 BBH

OWNER Samedan Oil Corp
CEMENT

AMOUNT ORDERED 225 SKS 69460
3% cc - 2% gel

COMMON	<u>135 SKS</u>	@	<u>7.20</u>	<u>972.00</u>
POZMIX	<u>90 SKS</u>	@	<u>3.15</u>	<u>283.50</u>
GEL	<u>4 SKS</u>	@	<u>9.50</u>	<u>38.00</u>
CHLORIDE	<u>7 SKS</u>	@	<u>28.00</u>	<u>196.00</u>
		@		
		@		
		@		
		@		
		@		
		@		
HANDLING	<u>225 SKS</u>	@	<u>1.05</u>	<u>236.25</u>
MILEAGE	<u>4¢ per sk/mile</u>			<u>711.00</u>

TOTAL 2,436.75

EQUIPMENT

PUMP TRUCK CEMENTER Walt

300 HELPER Wayne

BULK TRUCK

212 DRIVER Dean

BULK TRUCK

DRIVER

REMARKS:

SERVICE

Cement Del Crs
(in cellar)
Stal Yan

DEPTH OF JOB	<u>298'</u>		
PUMP TRUCK CHARGE	<u>445.00</u>		
EXTRA FOOTAGE	@		
MILEAGE <u>79 mile</u>	@	<u>2.35</u>	<u>185.65</u>
PLUG <u>8 3/8 wooden Plug</u>	@		<u>45.00</u>
	@		
	@		

TOTAL 675.65

CHARGE TO: Abaccambie Del Co

STREET 801 Union Center

CITY Wichita STATE Kansas ZIP 67202

FLOAT EQUIPMENT

	@		
	@		
	@		
	@		
	@		

TOTAL _____

TAX _____

TOTAL CHARGE _____

DISCOUNT _____ IF PAID IN 30 DAYS

To Allied Cementing Co., Inc.
You are hereby requested to rent cementing equipment and furnish cementer and helper to assist owner or contractor to do work as is listed. The above work was

RECEIVED
STATE OF KANSAS
MAR 7 1995
CHONG
STON

Phone 913-483-2627, Russell, KS
 Phone 316-793-5861, Great Bend, KS

Phone 913-625-5516, Hays, KS
 Phone 913-672-3471, Oakley, KS

Phone 316-886-5926, Medicine Lodge, KS
 Phone 913-798-3843, Ness City, KS

NEW

ALLIED CEMENTING CO., INC.

0007820

Home Office P. O. Box 31

Russell, Kansas 67665

Date	3-6-95	Sec.	5	Twp.	19s	Range	42w	Called Out		On Location	2:30 PM	Job Start	5:00 PM	Finish	9:45 PM
Lease	Vern	Well No.	1-5	Location			10w 45 1w 1N Tribune	County	Greene	State	KS				
Contractor	Abercrombie Drlg Rig 4											Owner	Samedan Oil Corp		
Type Job	PTA											To Allied Cementing Co., Inc. You are hereby requested to rent cementing equipment and furnish cementer and helper to assist owner or contractor to do work as listed.			
Hole Size	7 7/8		T.D. 5330'												
Csg.	Depth														
Tbg. Size	Depth														
Drill Pipe	4 1/2		Depth 2500'												
Tool	Depth														
Cement Left in Csg.	Shoe Joint														
Press Max.	Minimum														
Meas Line	Displace														
Perf.															

EQUIPMENT

Pumptrk	No.	Cementer	Walt
		Helper	Dean
Pumptrk 191	No.	Cementer	
		Helper	Wayne
		Driver	Mark
Bulktrk 218		Driver	

DEPTH of Job

Reference:	Pump Trk chrg	
	2 3/4 per mile	
	8 7/8 dry Hole Plug	
		Sub Total
		Tax
		Total

Remarks:
 1st Plug at 2500' w/50 sks
 2d Plug at 1650 w/80 sks
 3rd Plug at 840' w/50 sks
 4th Plug at 300' w/40 sks
 Plug at 40' w/10 sks
 15 sk in Rat Hole

CEMENT

Amount Ordered 245 sks 60/40 6% 60/1 1/4 belt

Consisting of

Common	
Poz. Mix	
Gel.	
Chloride	
Quickset	

ORIGINAL

Sales Tax

Handling

Mileage

Sub Total

Total

Floating Equipment

RECEIVED
 STATE CORPORATION COMMISSION

MAR 17 1995

CONSERVATION DIVISION
 TOPEKA, KANSAS

Thank You

GENERAL TERMS AND CONDITIONS

DEFINITIONS: In these terms and conditions, "Allied" shall mean Allied Cementing Co., Inc., and "Customer" shall refer to the party identified by that term on the front of this contract. As applicable, "Job" relates to the services described on the front side of this contract, "merchandise" refers to the material described on the front of this contract and to any other materials, products, or supplies used, sold, or furnished under the requirements of this contract.

—**TERMS:** Unless satisfactory credit has been established, "CUSTOMER" must tender full cash payment to "ALLIED" before the job is undertaken or merchandise is delivered. If satisfactory credit has been established, the terms of payment for the job and/or merchandise, including bulk cement, are net cash, payable in 30 days from the completion of the job and/or delivery of the merchandise. For all past due invoices, "CUSTOMER" agrees to pay interest on amounts invoiced at a rate of 18 percent per annum until paid. Notwithstanding the foregoing, in no event shall this Contract provide for interest exceeding the maximum rate of interest that "CUSTOMER" may agree to pay under applicable law. If any such interest should be provided for, it shall be and hereby is deemed to be a mistake, and this contract shall be automatically reformed to lower the rate of interest to the maximum legal contract rate, any amounts previously paid as excess interest shall be deducted from the amounts owing from the "CUSTOMER" or at the option of "ALLIED," refunded directly to "CUSTOMER." For purposes of this paragraph, ALLIED and CUSTOMER agree that KANSAS law shall apply. Any discounts granted with this contract are null and void if the charges are not paid when due.

—**ATTORNEY FEES:** In any legal action or proceeding between the parties to enforce any of the terms of this Service Contract, or in any way pertaining to the terms of this Contract, the prevailing party shall be entitled to recover all expenses, including, but not limited to, a reasonable sum as and for attorney's fees:

—**PRICES AND TAXES:** All merchandise listed in "ALLIED'S" current price schedule are F.O.B. ALLIED'S local station and are subject to change without notice. All prices are exclusive of any federal, state, local, or special taxes for the sale or use of the merchandise or services listed. The amount of taxes required to be paid by ALLIED shall be added to the quoted prices charged to CUSTOMER.

—**TOWING CHARGES:** ALLIED will make a reasonable attempt to get to and from each job site using its own equipment. Should ALLIED be unable to do so because of poor or inadequate road conditions, and should it become necessary to employ a tractor or other pulling equipment to get to or from the job site, the tractor or pulling equipment will be supplied by CUSTOMER or, if furnished by ALLIED, will be charged to and paid by CUSTOMER.

—**PREPARATION CHARGES:** If a job and/or merchandise is ordered and CUSTOMER cancels the order after preparation of a chemical solution or other material, CUSTOMER will pay ALLIED for the expenses incurred by ALLIED as a result of the cancellation.

—**DEADHAUL CHARGES:** Unless otherwise specified on the front of this Contract, a deadhaul charge as set forth in ALLIED'S current price book will be charged each way for each service unit which is ordered by CUSTOMER but not used.

—**SERVICE CONDITIONS AND LIABILITIES:** 1. ALLIED carries public liability and property damage insurance, but since there are so many uncertain and unknown conditions beyond ALLIED'S control, ALLIED shall not be liable for injuries to property or persons or for loss or damage arising from the performance of the job or delivery of the merchandise. Customer shall be responsible for and indemnify, defend, and hold harmless ALLIED, its officers, agents and employees, from and against any and all claims or suits for:

(A) Damage to property or for bodily injury, sickness, disease, or death, brought by any person, including CUSTOMER and/or the well owner; and:

(B) Oil spills, pollution, surface or sub-surface damage, injury to the well, reservoir loss, or damage arising from a well blowout arising out of or in connection with ALLIED'S performance of the job or furnishing of merchandise in accordance with this contract, unless such loss or damage is caused by the willful misconduct or gross negligence of ALLIED or its employees.

2. With respect to any of ALLIED'S tools, equipment, or instruments which are lost in the well or damaged when performing or attempting to perform the job or, in the case of marine operations, are lost or damaged at any time after delivery to the landing for CUSTOMER and before return to ALLIED at the landing, CUSTOMER shall either recover the lost item without cost to ALLIED or reimburse ALLIED the current replacement cost of the item unless the loss or damage results from the sole negligence of ALLIED or its employees.

3. ALLIED does not assume any liability or responsibility for damages or conditions resulting from chemical action in cements caused by contamination of water or other fluids.

WARRANTIES: 1. ALLIED warrants all merchandise manufactured or furnished by it to be free from defects in material and workmanship under normal use and service when installed, and used, and/or serviced in the manner provided and intended. ALLIED'S obligation under this warranty is expressly limited to repair, replacement, or allowance for credit, at its option, for any merchandise which is determined by ALLIED to be defective. THIS IS THE SOLE WARRANTY OF ALLIED AND NO OTHER WARRANTY IS APPLICABLE, EITHER EXPRESS OR OTHERWISE IMPLIED, IN FACT OR IN LAW, INCLUDING ANY WARRANTY AS TO MERCHANTABILITY OR FITNESS FOR A PARTICULAR USE OR PURPOSE, CUSTOMER'S sole and only remedy with regard to any defective merchandise shall be the repair or replacement thereof or allowance for credit as herein provided, and ALLIED shall not be liable for any consequential, special, incidental, or punitive damages resulting from or caused by defective materials, products or supplies.

2. More specifically:

(A) Nothing in this contract shall be construed as a warranty by ALLIED of the success or the effectiveness of the result of any work done or merchandise used, sold, or furnished under this contract.

(B) Nothing in this contract shall be construed as a warranty of the accuracy or correctness of any facts, information, or data furnished by ALLIED or any interpretation of tests, meter readings, chart information, analysis of research, or recommendations made by ALLIED, unless the inaccuracy or incorrectness is caused by the willful misconduct or gross negligence of ALLIED or its employees in the preparation or furnishing of such facts, information or data.

(C) Work done by ALLIED shall be under the direct supervision and control of the CUSTOMER or his agent and ALLIED will accomplish the job as an independent contractor and not as an employee or agent of the CUSTOMER.