



KANSAS CORPORATION COMMISSION 1068960  
OIL & GAS CONSERVATION DIVISION

Form ACO-1

June 2009

Form Must Be Typed

Form must be Signed

All blanks must be Filled

**CONFIDENTIAL**

**WELL COMPLETION FORM**

**WELL HISTORY - DESCRIPTION OF WELL & LEASE**

OPERATOR: License # 32334

Name: Chesapeake Operating, Inc.

Address 1: 6100 N WESTERN AVE

Address 2: PO BOX 18496

City: OKLAHOMA CITY State: OK Zip: 73054 + 0496

Contact Person: Aletha Dewbre / David Wiist

Phone: ( 405 ) 935-4775

CONTRACTOR: License # 33784

Name: Trinidad Drilling Limited Partnership

Wellsite Geologist: Jeremy Washburn / Horizon Mud Logging

Purchaser: Atlas via CEMI

Designate Type of Completion:

- New Well     Re-Entry     Workover
- Oil     WSW     SWD     SLOW
- Gas     D&A     ENHR     SIGW
- OG     GSW     Temp. Abd.
- CM (Coal Bed Methane)
- Cathodic     Other (Core, Expl., etc.): \_\_\_\_\_

If Workover/Re-entry: Old Well Info as follows:

Operator: \_\_\_\_\_

Well Name: \_\_\_\_\_

Original Comp. Date: \_\_\_\_\_ Original Total Depth: \_\_\_\_\_

- Deepening     Re-perf.     Conv. to ENHR     Conv. to SWD
- Conv. to GSW
- Plug Back: \_\_\_\_\_ Plug Back Total Depth \_\_\_\_\_
- Commingled    Permit #: \_\_\_\_\_
- Dual Completion    Permit #: \_\_\_\_\_
- SWD    Permit #: \_\_\_\_\_
- ENHR    Permit #: \_\_\_\_\_
- GSW    Permit #: \_\_\_\_\_

<u>08/22/2011</u>	<u>9/13/2011</u>	<u>09/15/2011</u>
Spud Date or Recompletion Date	Date Reached TD	Completion Date or Recompletion Date

API No. 15 - 15-191-22631-01-00

Spot Description: \_\_\_\_\_

N2 N2 NE NE Sec. 3 Twp. 34 S. R. 4  East  West

180 Feet from  North /  South Line of Section

660 Feet from  East /  West Line of Section

Footages Calculated from Nearest Outside Section Corner:

- NE     NW     SE     SW

County: Sumner

Lease Name: Schmidt 3-34-4 Well #: 1H

Field Name: N/A

Producing Formation: Mississippi

Elevation: Ground: 1224 Kelly Bushing: 1239

Total Depth: 8670 Plug Back Total Depth: \_\_\_\_\_

Amount of Surface Pipe Set and Cemented at: 500 Feet

Multiple Stage Cementing Collar Used?  Yes  No

If yes, show depth set: \_\_\_\_\_ Feet

If Alternate II completion, cement circulated from: \_\_\_\_\_

feet depth to: \_\_\_\_\_ w/ \_\_\_\_\_ sx cmt.

**Drilling Fluid Management Plan**

(Data must be collected from the Reserve Pit)

Chloride content: 3000 ppm Fluid volume: 7800 bbls

Dewatering method used: Hauled to Disposal

Location of fluid disposal if hauled offsite:

Operator Name: Gray Disposal

Lease Name: Gray License #: 28416

Quarter SW Sec. 15 Twp. 24 S. R. 7  East  West

County: Garfield Permit #: 000000

**AFFIDAVIT**

I am the affiant and I hereby certify that all requirements of the statutes, rules and regulations promulgated to regulate the oil and gas industry have been fully complied with and the statements herein are complete and correct to the best of my knowledge.

Submitted Electronically

**KCC Office Use ONLY**

- Letter of Confidentiality Received  
Date: 12/19/2011
- Confidential Release Date: \_\_\_\_\_
- Wireline Log Received
- Geologist Report Received
- UIC Distribution
- ALT  I  II  III Approved by: NAOMI JAMES Date: 12/22/2011

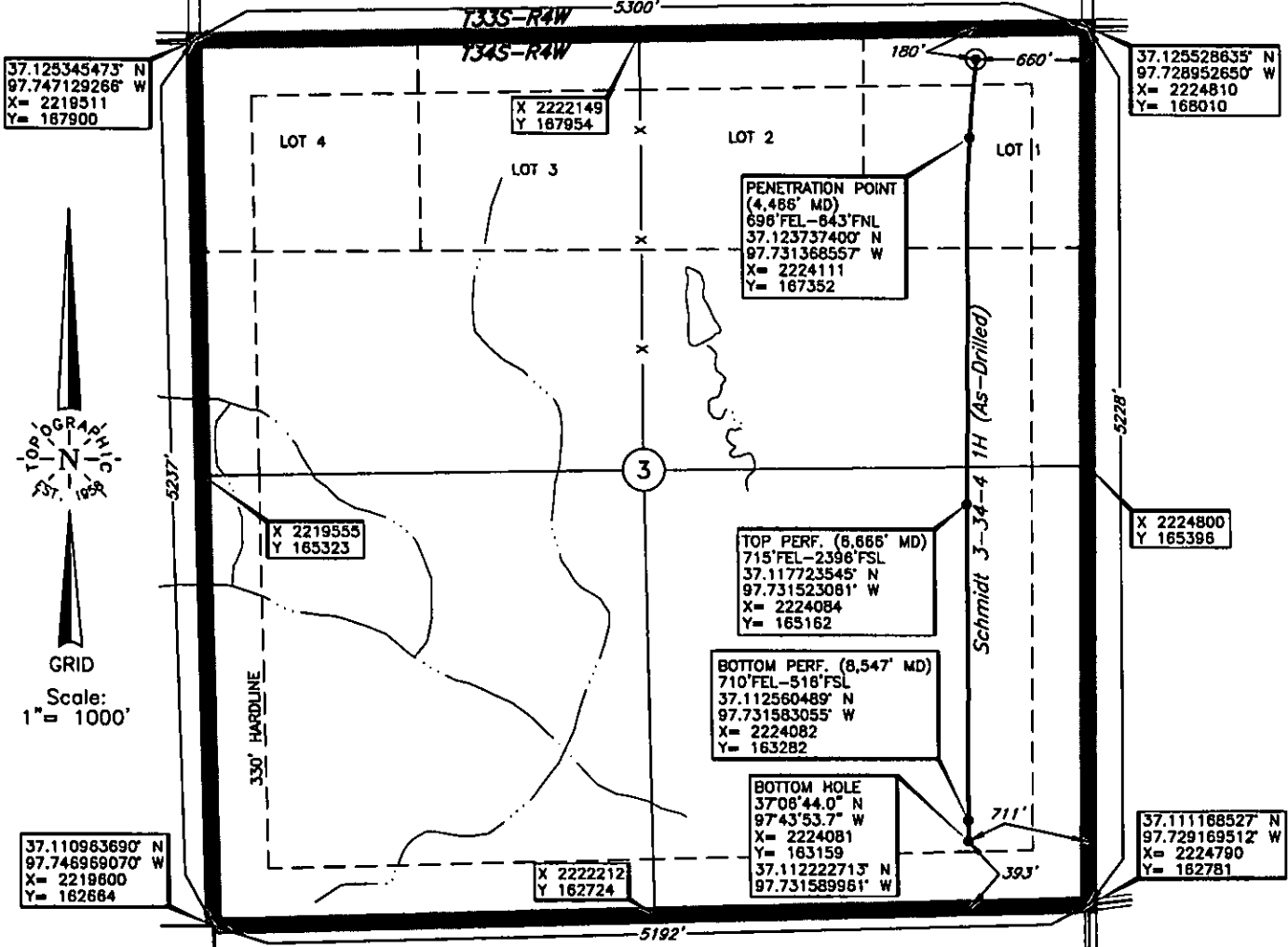
**TOPOGRAPHIC LAND SURVEYORS**

6709 NORTH CLASSEN BLVD., OKLA. CITY, OKLA. 73116 • LOCAL (405) 843-4847 • OUT OF STATE (800) 654-3219  
 Certificate of Authorization No. LS-99, Exp. Dec 31, 2011

SUMNER

County, Kansas

180' FNL - 660' FEL Section 3 Township 34S Range 4W P.M.



This location has been very carefully staked on the ground according to the best official survey records, maps, and photographs available to us, but its accuracy is not guaranteed. Review this plat and notify us immediately of any possible discrepancy.

Operator: CHESAPEAKE OPERATING, INC.  
 Lease Name: SCHMIDT 3-34-4

Well No.: 1H **ELEVATION:**  
1224' Gr. at Stake

Topography & Vegetation Loc. fell in terraced plowed wheat field

Good Drill Site? Yes Reference Stakes or Alternate Location Stakes Set None

Best Accessibility to Location From North

Distance & Direction from Hwy Jct or Town From Caldwell, KS, go ±6.5 mi. North, then ±7.0 mi. West to NE Cor. of Sec. 3-T34S-R4W

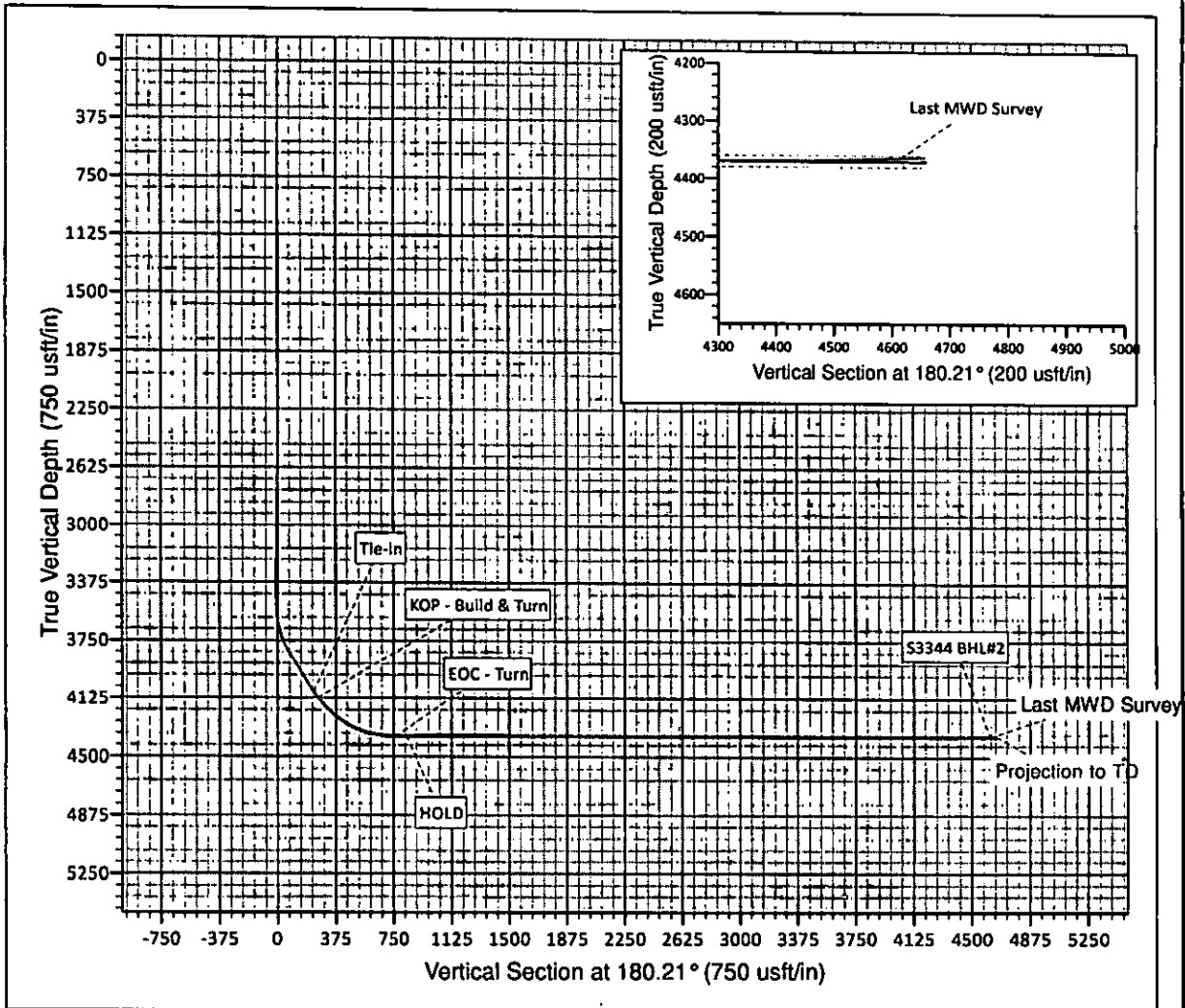
The following information was gathered using a GPS receiver  
 Accuracy ±2-3 Meters.

Invoice # 175449 Date of Drawing: Nov. 07, 2011  
169026 Date Staked: Jun. 27, 2011 JP

GPS  
 DATUM: NAD-27  
 LAT: 37°07'30.0"N  
 LONG: 97°43'52.4"W  
 LAT: 37.125010838  
 LONG: 97.731225113  
 STATE PLANE  
 COORDINATES:  
 ZONE: KS-SOUTH  
 X: 2224149  
 Y: 167816

**FINAL AS-DRILLED PLAT**

AS-DRILLED INFORMATION  
 FURNISHED BY CHESAPEAKE OPERATING



Well Details	
Chesapeake Operating	
Schmidt 3-34-4 #1H	
Sumner County, Kansas	
GL Elev: 1224.0	
Trinidad 205	
RKB @ 1239.0usft (Trinidad 205)	

ANNOTATIONS									
TVD	MD	Inc	Azi	+N/-S	+E/-W	VSec	Departure	Annotation	
4083.2	4143.0	34.20	184.20	-230.8	-22.1	230.9	0.0	Tie-in	
4122.1	4191.0	37.50	184.20	-258.8	-24.2	258.9	28.1	KOP - Build & Turn	
4369.9	4771.3	90.00	182.42	-760.5	-51.3	760.7	530.6	EOC - Turn	
4369.9	4845.0	90.00	180.21	-834.2	-53.0	834.4	604.2	HOLD	
4369.9	8670.0	90.00	180.21	-4659.2	-67.0	4659.4	4429.2	TD at 8670'	

Operator: Chesapeake  
 Lease Name: Schmidt 3-34-4 1H  
 Job Number: 21256  
 Survey Company: Intrepid-DDS



Target KBTVD: 4370  
 Target Angle: 90.0  
 Section Plane: 180.2  
 Total Declination Correction: 4.04

#	Survey Depth	Drift (Deg.)	Azimuth (Deg.)	Course Length	TVD (Fl.)	Vertical Section	+N/-S (Fl.)	+E/-W (Fl.)	BUR	DLS	KBTVD	+Above -Below Target
Tie in	0	0.0	0.0	0.0	0.0	0.0	0.0	0.0	0.0	0.0	0.0	
1	100	0.2	207.3	100	100.0	0.2	-0.2	-0.1	0.2	0.2	100.0	4270.0
2	200	0.2	315.5	100	200.0	0.2	-0.2	-0.3	0.0	0.3	200.0	4170.0
3	300	0.3	128.4	100	300.0	0.3	-0.3	-0.2	0.1	0.4	300.0	4070.0
4	400	0.2	64.5	100	400.0	0.3	-0.3	0.2	-0.1	0.3	400.0	3970.0
5	500	0.2	64.5	100	500.0	0.2	-0.2	0.6	0.0	0.0	500.0	3870.0
6	599	0.3	134.6	99	599.0	0.2	-0.3	0.9	0.1	0.3	599.0	3771.0
7	662	0.1	163.4	63	662.0	0.4	-0.4	1.1	-0.3	0.3	662.0	3708.0
8	757	0.2	133.9	95	757.0	0.6	-0.6	1.2	0.1	0.1	757.0	3613.0
9	852	0.4	127.6	95	852.0	0.9	-0.9	1.6	0.2	0.2	852.0	3518.0
10	947	0.4	162.2	95	947.0	1.4	-1.5	2.0	0.0	0.3	947.0	3423.0
11	1042	0.5	167.0	95	1042.0	2.2	-2.2	2.2	0.1	0.1	1042.0	3328.0
12	1136	0.2	156.2	94	1136.0	2.7	-2.7	2.3	-0.3	0.3	1136.0	3234.0
13	1231	0.1	229.7	95	1231.0	2.9	-2.9	2.3	-0.1	0.2	1231.0	3139.0
14	1326	0.1	242.9	95	1326.0	3.0	-3.0	2.2	0.0	0.0	1326.0	3044.0
15	1422	0.2	184.5	96	1422.0	3.2	-3.2	2.1	0.1	0.2	1422.0	2948.0
16	1517	0.2	191.1	95	1517.0	3.5	-3.5	2.0	0.0	0.0	1517.0	2853.0
17	1612	0.2	264.2	95	1612.0	3.7	-3.7	1.8	0.0	0.3	1612.0	2758.0
18	1708	0.0	209.5	96	1708.0	3.7	-3.7	1.7	-0.2	0.2	1708.0	2662.0
19	1803	0.3	166.4	95	1803.0	4.0	-4.0	1.7	0.3	0.3	1803.0	2567.0
20	1897	0.1	11.4	94	1897.0	4.1	-4.1	1.8	-0.2	0.4	1897.0	2473.0
21	1993	0.2	316.5	96	1993.0	3.9	-3.9	1.7	0.1	0.2	1993.0	2377.0
22	2089	0.3	351.9	96	2089.0	3.6	-3.6	1.6	0.1	0.2	2089.0	2281.0
23	2184	0.1	125.1	95	2184.0	3.4	-3.4	1.6	-0.2	0.4	2184.0	2186.0
24	2280	0.2	85.4	96	2280.0	3.4	-3.4	1.8	0.1	0.1	2280.0	2090.0
25	2375	0.3	46.4	95	2375.0	3.2	-3.2	2.2	0.1	0.2	2375.0	1995.0
26	2470	0.5	15.5	95	2470.0	2.6	-2.7	2.5	0.2	0.3	2470.0	1900.0
27	2564	0.8	358.5	94	2564.0	1.6	-1.6	2.6	0.3	0.4	2564.0	1806.0
28	2654	1.0	339.4	90	2654.0	0.2	-0.2	2.3	0.2	0.4	2654.0	1716.0
29	2754	1.0	340.1	100	2753.9	-1.4	1.4	1.7	0.0	0.0	2753.9	1616.1
30	2849	1.0	342.9	95	2848.9	-3.0	3.0	1.1	0.0	0.1	2848.9	1521.1
31	2943	0.7	334.7	94	2942.9	-4.3	4.3	0.7	-0.3	0.3	2942.9	1427.1
32	3038	0.7	354.6	95	3037.9	-5.4	5.4	0.3	0.0	0.3	3037.9	1332.1
33	3134	1.0	16.2	96	3133.9	-6.8	6.8	0.5	0.3	0.5	3133.9	1236.1
34	3229	0.9	345.9	95	3228.9	-8.3	8.3	0.6	-0.1	0.5	3228.9	1141.1
35	3324	0.9	353.9	95	3323.9	-9.8	9.7	0.3	0.0	0.1	3323.9	1046.1
36	3419	1.0	339.4	95	3418.9	-11.3	11.3	-0.1	0.1	0.3	3418.9	951.1
37	3571	5.0	179.1	152	3570.7	-5.9	5.9	-0.4	2.6	3.9	3570.7	799.3

Operator: Chesapeake  
 Lease Name: Schmidt 3-34-4 1H  
 Job Number: 21256  
 Survey Company: Intrepid-DDS



Target KBTVD: 4370  
 Target Angle: 90.0  
 Section Plane: 180.2  
 Total Declination Correction: 4.04

#	Survey Depth	Drift (Deg.)	Azimuth (Deg.)	Course Length	TVD (Ft.)	Vertical Section	+N/-S (Ft.)	+E/-W (Ft.)	BUR	DLS	KBTVD	+Above -Below Target
38	3666	13.0	175.0	95	3664.5	8.9	-8.9	0.6	8.4	8.4	3664.5	705.5
39	3761	21.9	186.3	95	3755.0	37.2	-37.2	-0.4	9.4	10.0	3755.0	615.0
40	3856	31.5	188.3	95	3839.8	79.5	-79.5	-6.0	10.1	10.1	3839.8	530.2
41	3951	32.4	186.0	95	3920.4	129.4	-129.4	-12.2	0.9	1.6	3920.4	449.6
42	4047	31.4	185.0	96	4001.9	179.9	-179.9	-17.1	-1.0	1.2	4001.9	368.1
43	4111	31.9	185.2	64	4056.4	213.4	-213.3	-20.1	0.8	0.8	4056.4	313.6
44	4143	34.2	184.2	32	4083.2	230.8	-230.7	-21.5	7.2	7.4	4083.2	286.8
45	4175	38.0	183.0	32	4109.1	249.6	-249.5	-22.7	11.9	12.1	4109.1	260.9
46	4206	40.2	183.5	31	4133.1	269.1	-269.1	-23.8	7.1	7.2	4133.1	236.9
47	4238	42.0	183.9	32	4157.2	290.1	-290.0	-25.1	5.6	5.7	4157.2	212.8
48	4270	43.9	184.4	32	4180.6	311.9	-311.8	-26.7	5.9	6.0	4180.6	189.4
49	4301	45.9	184.5	31	4202.6	333.7	-333.6	-28.4	6.5	6.5	4202.6	167.4
50	4333	48.0	184.6	32	4224.4	357.0	-356.9	-30.3	6.6	6.6	4224.4	145.6
51	4365	50.4	184.1	32	4245.4	381.2	-381.1	-32.1	7.5	7.6	4245.4	124.6
52	4397	53.3	184.7	32	4265.1	406.3	-406.2	-34.0	9.1	9.2	4265.1	104.9
53	4429	56.0	184.0	32	4283.6	432.3	-432.2	-36.0	8.4	8.6	4283.6	86.4
54	4461	61.0	183.2	32	4300.3	459.5	-459.4	-37.7	15.6	15.8	4300.3	69.7
55	4492	65.9	182.8	31	4314.2	487.2	-487.1	-39.2	15.6	15.7	4314.2	55.8
56	4524	71.0	182.5	32	4326.0	516.9	-516.8	-40.5	16.1	16.1	4326.0	44.0
57	4556	76.1	182.4	32	4335.0	547.6	-547.4	-41.9	15.9	15.9	4335.0	35.0
58	4588	78.2	182.5	32	4342.1	578.8	-578.6	-43.2	6.6	6.6	4342.1	27.9
59	4620	80.1	182.7	32	4348.2	610.2	-610.0	-44.6	5.9	6.0	4348.2	21.8
60	4652	82.2	182.7	32	4353.1	641.8	-641.6	-46.1	6.6	6.6	4353.1	16.9
61	4683	83.4	183.1	31	4357.0	672.5	-672.3	-47.7	3.9	4.1	4357.0	13.0
62	4715	84.4	182.5	32	4360.4	704.3	-704.1	-49.2	3.1	3.6	4360.4	9.6
63	4747	86.6	182.4	32	4362.9	736.1	-736.0	-50.6	6.9	6.9	4362.9	7.1
64	4778	88.1	181.8	31	4364.3	767.1	-766.9	-51.7	4.8	5.2	4364.3	5.7
65	4809	89.9	181.1	31	4364.9	798.1	-797.9	-52.5	5.8	6.2	4364.9	5.1
66	4841	90.9	181.0	32	4364.6	830.1	-829.9	-53.1	3.1	3.1	4364.6	5.4
67	4873	91.5	180.9	32	4364.0	862.1	-861.9	-53.6	1.9	1.9	4364.0	6.0
68	4904	92.0	180.8	31	4363.0	893.0	-892.8	-54.1	1.6	1.6	4363.0	7.0
69	4999	93.8	181.0	95	4358.2	987.9	-987.7	-55.6	1.9	1.9	4358.2	11.8
70	5031	94.4	180.8	32	4355.9	1019.8	-1019.6	-56.1	1.9	2.0	4355.9	14.1
71	5062	92.0	180.1	31	4354.2	1050.8	-1050.6	-56.3	-7.7	8.1	4354.2	15.8
72	5094	91.0	179.8	32	4353.4	1082.8	-1082.6	-56.3	-3.1	3.3	4353.4	16.6
73	5125	88.3	179.0	31	4353.6	1113.7	-1113.5	-56.0	-8.7	9.1	4353.6	16.4
74	5157	87.4	178.8	32	4354.8	1145.7	-1145.5	-55.3	-2.8	2.9	4354.8	15.2
75	5188	88.0	179.1	31	4356.0	1176.7	-1176.5	-54.8	1.9	2.2	4356.0	14.0

Operator: Chesapeake  
 Lease Name: Schmidt 3-34-4 IH  
 Job Number: 21256  
 Survey Company: Intrepid-DDS



Target KBTVD: 4370  
 Target Angle: 90.0  
 Section Plane: 180.2  
 Total Declination Correction: 4.04

#	Survey Depth	Drift (Deg.)	Azimuth (Deg.)	Course Length	TVD (Fl.)	Vertical Section	+N/-S (Fl.)	+E/-W (Fl.)	BUR	DLS	KBTVD	+Above -Below Target
76	5220	88.2	178.9	32	4357.1	1208.7	-1208.5	-54.2	0.6	0.9	4357.1	12.9
77	5252	88.6	178.9	32	4357.9	1240.6	-1240.4	-53.6	1.2	1.3	4357.9	12.1
78	5283	89.0	178.9	31	4358.6	1271.6	-1271.4	-53.0	1.3	1.3	4358.6	11.4
79	5314	89.0	178.8	31	4359.1	1302.6	-1302.4	-52.4	0.0	0.3	4359.1	10.9
80	5346	89.5	178.7	32	4359.6	1334.6	-1334.4	-51.7	1.6	1.6	4359.6	10.4
81	5377	90.1	178.7	31	4359.7	1365.6	-1365.4	-51.0	1.9	1.9	4359.7	10.3
80	5409	90.5	178.7	32	4359.5	1397.6	-1397.4	-50.3	1.3	1.3	4359.5	10.5
81	5441	88.3	179.6	32	4359.8	1429.6	-1429.4	-49.8	-6.9	7.4	4359.8	10.2
82	5473	87.3	179.8	32	4361.1	1461.5	-1461.4	-49.6	-3.1	3.2	4361.1	8.9
83	5504	87.7	179.7	31	4362.4	1492.5	-1492.3	-49.5	1.3	1.3	4362.4	7.6
84	5536	87.6	181.1	32	4363.7	1524.5	-1524.3	-49.7	-0.3	4.4	4363.7	6.3
85	5568	87.8	181.2	32	4365.0	1556.4	-1556.3	-50.4	0.6	0.7	4365.0	5.0
86	5599	88.2	181.5	31	4366.1	1587.4	-1587.2	-51.1	1.3	1.6	4366.1	3.9
87	5631	88.0	181.3	32	4367.2	1619.4	-1619.2	-51.9	-0.6	0.9	4367.2	2.8
88	5662	88.0	181.0	31	4368.2	1650.4	-1650.2	-52.5	0.0	1.0	4368.2	1.8
89	5694	90.2	181.4	32	4368.7	1682.4	-1682.2	-53.2	6.9	7.0	4368.7	1.3
90	5725	91.0	181.5	31	4368.4	1713.3	-1713.2	-53.9	2.6	2.6	4368.4	1.6
91	5757	91.2	181.3	32	4367.8	1745.3	-1745.1	-54.7	0.6	0.9	4367.8	2.2
92	5789	91.3	181.0	32	4367.1	1777.3	-1777.1	-55.4	0.3	1.0	4367.1	2.9
93	5820	92.0	180.8	31	4366.2	1808.3	-1808.1	-55.8	2.3	2.3	4366.2	3.8
94	5852	89.5	180.4	32	4365.8	1840.3	-1840.1	-56.2	-7.8	7.9	4365.8	4.2
95	5884	89.3	180.1	32	4366.1	1872.3	-1872.1	-56.3	-0.6	1.1	4366.1	3.9
96	5916	89.3	179.7	32	4366.5	1904.3	-1904.1	-56.3	0.0	1.2	4366.5	3.5
97	5947	90.1	179.6	31	4366.7	1935.3	-1935.1	-56.1	2.6	2.6	4366.7	3.3
98	5979	90.8	179.4	32	4366.4	1967.3	-1967.1	-55.8	2.2	2.3	4366.4	3.6
99	6011	91.0	179.2	32	4365.9	1999.3	-1999.1	-55.4	0.6	0.9	4365.9	4.1
100	6042	91.4	179.3	31	4365.3	2030.3	-2030.1	-55.0	1.3	1.3	4365.3	4.7
101	6074	91.6	179.1	32	4364.4	2062.2	-2062.1	-54.6	0.6	0.9	4364.4	5.6
102	6106	89.8	179.5	32	4364.0	2094.2	-2094.1	-54.2	-5.6	5.8	4364.0	6.0
103	6138	88.9	181.5	32	4364.4	2126.2	-2126.0	-54.4	-2.8	6.9	4364.4	5.6
104	6169	88.4	181.8	31	4365.1	2157.2	-2157.0	-55.3	-1.6	1.9	4365.1	4.9
105	6201	88.6	181.8	32	4366.0	2189.2	-2189.0	-56.3	0.6	0.6	4366.0	4.0
106	6233	89.0	181.7	32	4366.6	2221.2	-2221.0	-57.3	1.3	1.3	4366.6	3.4
107	6264	89.3	181.9	31	4367.1	2252.2	-2252.0	-58.3	1.0	1.2	4367.1	2.9
108	6296	89.5	181.8	32	4367.4	2284.1	-2283.9	-59.3	0.6	0.7	4367.4	2.6
109	6327	89.6	181.8	31	4367.7	2315.1	-2314.9	-60.3	0.3	0.3	4367.7	2.3
110	6390	89.4	180.9	63	4368.2	2378.1	-2377.9	-61.8	-0.3	1.5	4368.2	1.8
111	6453	89.6	180.7	63	4368.8	2441.1	-2440.9	-62.7	0.3	0.4	4368.8	1.2

Operator: Chesapeake  
 Lease Name: Schmidt 3-34-4 III  
 Job Number: 21256  
 Survey Company: Intrepid-DDS



Target KBTVD: 4370  
 Target Angle: 90.0  
 Section Plane: 180.2  
 Total Declination Correction: 4.04

#	Survey Depth	Drift (Deg.)	Azimuth (Deg.)	Course Length	TVD (Ft.)	Vertical Section	+N/-S (Ft.)	+E/-W (Ft.)	RIIR	DLS	KBTVD	+Above -Below Target
112	6516	89.7	180.6	63	4369.2	2504.1	-2503.9	-63.4	0.2	0.2	4369.2	0.8
113	6579	89.6	180.5	63	4369.6	2567.1	-2566.9	-64.0	-0.2	0.2	4369.6	0.4
114	6643	90.1	180.7	64	4369.7	2631.1	-2630.9	-64.7	0.8	0.8	4369.7	0.3
115	6706	90.4	180.5	63	4369.4	2694.1	-2693.9	-65.3	0.5	0.6	4369.4	0.6
116	6769	90.5	180.3	63	4369.0	2757.1	-2756.9	-65.8	0.2	0.4	4369.0	1.0
117	6832	91.0	180.2	63	4368.1	2820.1	-2819.9	-66.0	0.8	0.8	4368.1	1.9
118	6896	90.8	179.6	64	4367.1	2884.1	-2883.9	-65.9	-0.3	1.0	4367.1	2.9
119	6960	90.9	179.3	64	4366.2	2948.1	-2947.8	-65.3	0.2	0.5	4366.2	3.8
120	7023	91.2	179.0	63	4365.0	3011.0	-3010.8	-64.4	0.5	0.7	4365.0	5.0
121	7084	88.9	179.7	61	4365.0	3072.0	-3071.8	-63.7	-3.8	3.9	4365.0	5.0
122	7147	88.0	179.9	63	4366.7	3135.0	-3134.8	-63.5	-1.4	1.5	4366.7	3.3
123	7210	88.4	179.8	63	4368.6	3198.0	-3197.7	-63.3	0.6	0.7	4368.6	1.4
124	7274	88.4	179.5	64	4370.4	3261.9	-3261.7	-62.9	0.0	0.5	4370.4	-0.4
125	7337	88.3	178.9	63	4372.3	3324.9	-3324.7	-62.0	-0.2	1.0	4372.3	-2.3
126	7400	89.1	179.4	63	4373.7	3387.9	-3387.7	-61.1	1.3	1.5	4373.7	-3.7
127	7464	90.3	180.3	64	4374.0	3451.9	-3451.7	-60.9	1.9	2.3	4374.0	-4.0
128	7527	90.6	180.7	63	4373.5	3514.9	-3514.7	-61.5	0.5	0.8	4373.5	-3.5
129	7590	91.1	180.4	63	4372.6	3577.9	-3577.6	-62.1	0.8	0.9	4372.6	-2.6
130	7654	91.5	180.3	64	4371.1	3641.8	-3641.6	-62.5	0.6	0.6	4371.1	-1.1
131	7717	91.3	179.6	63	4369.6	3704.8	-3704.6	-62.4	-0.3	1.2	4369.6	0.4
132	7780	92.0	179.3	63	4367.8	3767.8	-3767.6	-61.8	1.1	1.2	4367.8	2.2
133	7844	91.2	180.3	64	4366.0	3831.8	-3831.6	-61.6	-1.3	2.0	4366.0	4.0
134	7907	89.1	181.6	63	4365.8	3894.7	-3894.5	-62.6	-3.3	3.9	4365.8	4.2
135	7971	90.2	181.8	64	4366.2	3958.7	-3958.5	-64.5	1.7	1.7	4366.2	3.8
136	8034	90.2	181.5	63	4366.0	4021.7	-4021.5	-66.3	0.0	0.5	4366.0	4.0
137	8097	89.3	181.1	63	4366.3	4084.7	-4084.5	-67.8	-1.4	1.6	4366.3	3.7
138	8160	88.8	180.8	63	4367.3	4147.7	-4147.4	-68.8	-0.8	0.9	4367.3	2.7
139	8224	88.3	180.1	64	4368.9	4211.6	-4211.4	-69.3	-0.8	1.3	4368.9	1.1
140	8287	88.7	178.9	63	4370.6	4274.6	-4274.4	-68.8	0.6	2.0	4370.6	-0.6
141	8350	91.9	178.9	63	4370.3	4337.6	-4337.4	-67.6	5.1	5.1	4370.3	-0.3
142	8414	90.7	179.9	64	4368.8	4401.6	-4401.3	-66.9	-1.9	2.4	4368.8	1.2
143	8477	90.9	179.9	63	4367.9	4464.5	-4464.3	-66.8	0.3	0.3	4367.9	2.1
144	8540	91.6	180.3	63	4366.6	4527.5	-4527.3	-66.9	1.1	1.3	4366.6	3.4
145	8603	91.3	180.4	63	4365.0	4590.5	-4590.3	-67.3	-0.5	0.5	4365.0	5.0
146	8629	91.7	180.9	26	4364.3	4616.5	-4616.3	-67.6	1.5	2.5	4364.3	5.7
EOW	8670	91.7	180.9	41	4363.1	4657.5	-4657.3	-68.2	0.0	0.0	4363.1	6.9