

15-171-20222-00-00

STATE OF KANSAS
STATE CORPORATION COMMISSION
200 Colorado Derby Bldg.
Wichita, Kansas 67202

RECEIVED
STATE CORPORATION COMMISSION
JUL 12 1982
CONSERVATION DIVISION
Wichita, Kansas

Form CP-4
Rev. 12-15-80

WELL PLUGGING RECORD

Give All Information Completely
Make Required Affidavit

COUNTY Scott SEC. 10 TWP. 17S RGE. 33W E/W
Location as in quarters or footage from lines:

NE SW

Lease Owner Earth Energy Resources, Inc.
Lease Name Palmer #1 Well No. _____
Office Address 5021 N. Perkins Rd. Stillwater, Okla. 74074
Character of Well (Completed as Oil, Gas or Dry Hole): _____
Date Well Completed _____
Application for plugging filed _____
Plugging commenced 6-28-82
Plugging completed 7-1-82
Reason for abandonment of well or producing formation _____

Locate Well
correctly on above
Section Platt.

_____ Depleted
Was permission obtained from the Conservation Division or it's
Agent's before plugging was commenced? Yes

Name of Conservation Agent who supervised plugging of this well Steve Durrant
Producing formation _____ Depth to top _____ bottom T.D. 4789'

Show depth and thickness of all water, oil and gas formations.

OIL, GAS OR WATER RECORDS

Casing Record

Formation	Content	From	To	Size	Put in	Pulled Out
				8-5/8"	350'	none
				4-1/2"	4789'	3233'

Describe in detail the manner in which the well was plugged, indicating where the mud fluid was placed and the method or methods used in introducing it into the hold. If cement or other plugs were used, state the character of same and depth placed, from _____ feet to _____ feet for each plug set.

Plugged off bottom with sand to 4100' and ran 4 sacks cement. Shot casing @3635', 3430' and 3235'. Pulled a total of 2333' of 4-1/2" casing. Plugged well with 3 sacks hulls, 15 sacks gel, 70 sacks cement, 1 sack hulls, 15 sacks gel, released plug and displaced with 80 sacks cement.

Plugging Complete.

(If additional description is necessary, use BACK of this sheet)

Name of Plugging Contractor Kelso Casing Pulling

STATE OF Kansas COUNTY OF Rice, ss.

R. Darrell Kelso (employee of owner) or (owner or operator) of the above-described well, being first duly sworn on oath, says: That I have knowledge of the facts, statements, and matters herein contained and the log of the above-described well as filed and that the same are true and correct. So help me God.

(Signature) R. Darrell Kelso
Box 347 Chase, Kansas 67524
(Address)

SUBSCRIBED AND SWORN TO before me this 9th day of July, 19 82

Irene Hoover
Notary Public.

My Commission expires: _____



GEARHART

CEMENT BOND LOG

15-171-20222-00-06

FILING NO.

COMPANY EARTH ENERGY RESOURCES
 WELL FARMER #1
 FIELD WILCOAT
 COUNTY SCOTT STATE KANSAS
 LOCATION NE SW Other Services _____
 SEC 10 TWP 17S RGE 33W
 Permanent Datum G.L. Elev. 3027 KB 3031
 Logging Measured from K.B. 4 Ft. Above Permanent Datum DF 3020
 Logging Measured from K.B. GL 3027

Date	<u>1-15-82</u>	Type Fluid in Hole	<u>WATER</u>
Run No.	<u>ONE</u>	Dens.	
Depth - Driller	<u>5512</u>	Max. Rec. Temp.	
Depth - Logger	<u>4789</u>	Est. Cement Top	<u>3860</u>
Btm. Log Interval	<u>4781</u>	Equip. Location	<u>7224 LIBERAL</u>
Top Log Interval	<u>3749.5</u>	Recorded By	<u>SPERRY</u>
Open Hole Size	<u>7 7/8</u>	Witnessed By	
CASING REC.	Size	Wt/Ft	Grade
Surface String	<u>8 5/8</u>		Type Joint
Prot. String			Top
Prod. String	<u>4 1/2</u>		Bottom
Liner			<u>0</u>

STATE OF KANSAS
 RECEIVED
 MAR 29 1982
 CONSERVATION
 N.A.
 PRIMARY CEMENTING DATA
 Protection _____ Production _____
 Liner _____

BOND EQUIPMENT DATA

Tool No.	<u>554</u>	Tool Type	<u>COMB.</u>	Tool Size	<u>3.25"</u>
Centralizer		Type	<u>BOWSPRING</u>	Size	
		No.	<u>2</u>	Position	<u>TOP + BOTTOM</u>
Amplitude	<u>3'</u>	Transmitter to Receiver Spacing		Seismic Spectrum	<u>5'</u>
				Travel Time	<u>5'</u>

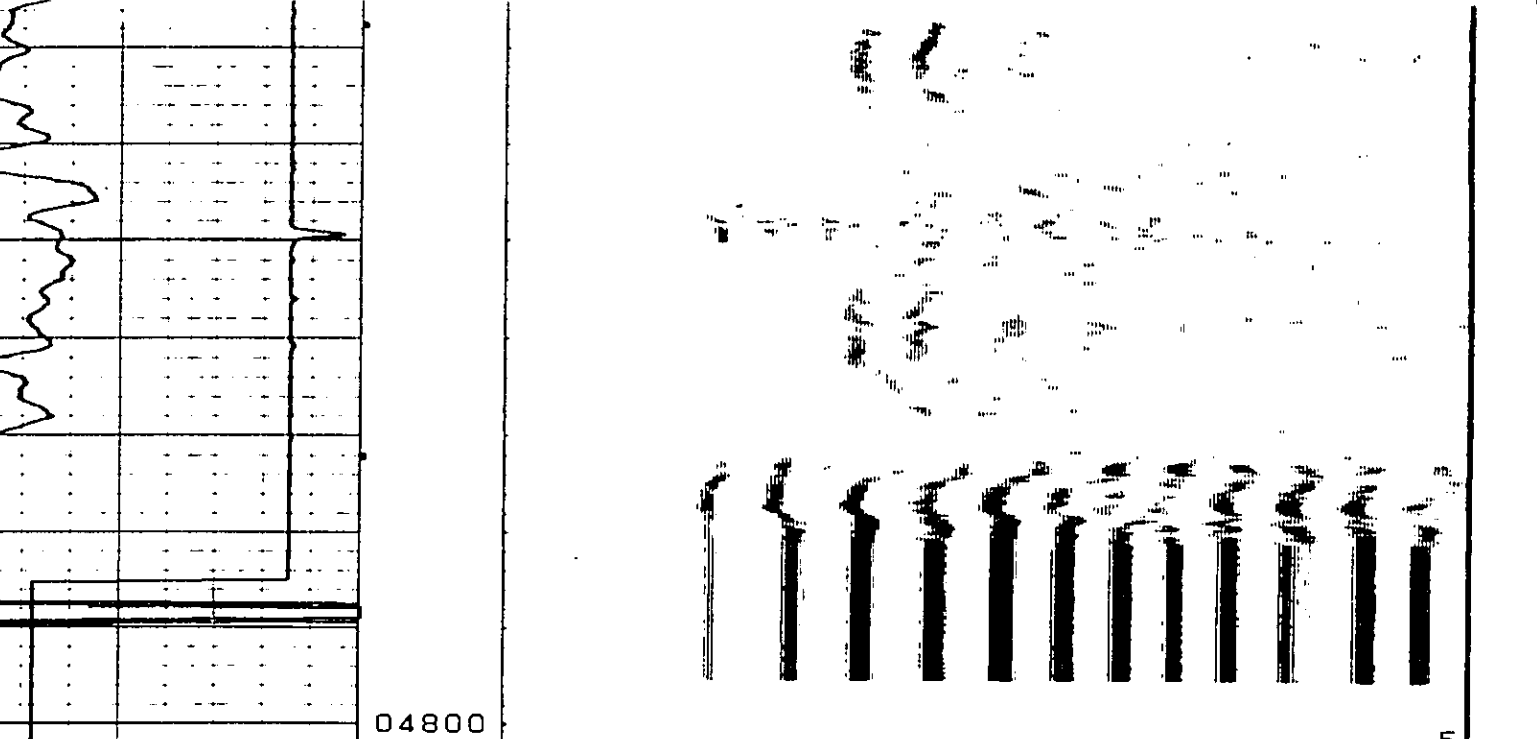
PRIMARY CEMENTING PROCEDURE

Hour	Date	Tool No.	<u>554</u>
<u>18:08</u>	<u>1-15-82</u>	Centralizer	
<u>18:41</u>	<u>"</u>		

GAMMA RAY EQUIPMENT & LOGGING DATA

No.	From	To	Speed FPM	T. C. Sec.	Bkg. Cps.	Cal. Cps.	Sens.	Zero Div. L or R	Api Per Log Div.
	<u>4781</u>	<u>3750</u>	<u>45</u>	<u>N.A.</u>	<u>35</u>	<u>135</u>	<u>100</u>		<u>20</u>

RESET + 7 FT. TO OPEN HOLE LOG



04800

200 S SPECTRUM 1200

FILING NO.

15-171-2022-00-00

COMPANY **EARTH ENERGY RESOURCES**
 WELL **FARMER #1**
 FIELD **WILCOAT**
 COUNTY **SCOTT** STATE **KANSAS**
 LOCATION **NE SW**

Perman Datum **G.L.** Elev. **3027** KB **303'**
 Log Measured from **K.B.** 4 Ft Above Permanent Datum DF **3000**
 Drilling Measured from **K.B.** GL **3027**

SFC **10** HGE **135** HSE **33W**

Date **1-15-82** Type Fluid in Hole **WATER**
 Run No. **ONE** Dens. Visc.
 Depth Driller **5512** Max Rec. Temp.
 Depth Logger **4789** Est. Cement Top **3860**
 3rd Log Interval **4781** Equip. Location **7224 LIBERAL**
 Top Log Interval **3749.5** Recorded By **SPERRY**
 Open Hole Size **7 7/8** Witnessed By
 CASING REC. Size Wt/Ft Grade Type Joint Top Bottom
 Surface String **8 5/8** **0** **382**
 Prot. String **4 1/2** **0** **T.D.**
 Prod. String
 Liner

STATE OF KANSAS
 RECEIVED
 MAR 29 1982
 CONSERVATION DIVISION
 KANSAS CITY

N.A.

PRIMARY CEMENTING DATA
 Stage Protection Production Liner

STRING
 Vol. of Cement
 Type of Cement
 Additive
 Additive by %
 Retarder
 Retarder by %
 Mt. of Slurry
 Water Loss
 Drill. Mud Type
 Drilling Mud Wt.

FIELD PRINT

PRIMARY CEMENTING PROCEDURE

Hour	Date	Tool No
Started Pumping Cement		554
Plug on Bottom		
Release Pressure		
Finish Cementing Operation		
Start Cement Bond Log	18:08	1-15-82
Finish Cement Bond Log	18:41	"

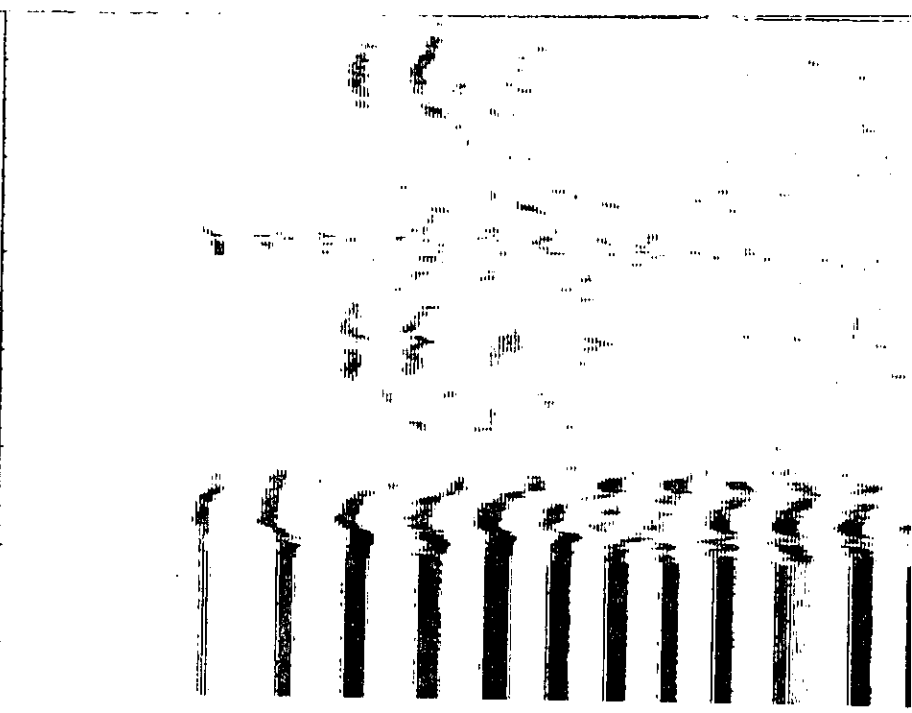
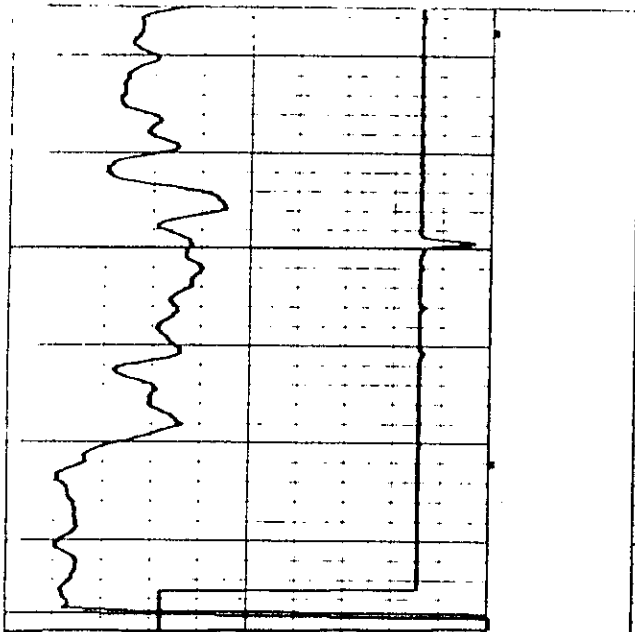
BOND EQUIPMENT DATA

Tool Type	Tool Size	Position	Transmitter to Receiver Spacing	Seismic Spectrum	Travel Time
COMB.	3.0	TOP + BOTTOM		5'	5'
BOWSPRING					

GAMMA RAY LOG EQUIPMENT & LOGGING DATA

Tool No.	Tool Model No.	Detector Model No.	From	To	Speed FPM	Beam Cps.	Cal. Cps.	Sens.	Zero Div. L or R
			4781	3750	4.5	N.A.	35	135	100

RESET + 7 FT. TO OPEN HOLE LOG



04800

200

S SPECTRUM