



1060209

Operator Name: TDI, Inc. Lease Name: Miller Well #: 1
 Sec. 19 Twp. 12 S. R. 18 East West County: Ellis

INSTRUCTIONS: Show important tops and base of formations penetrated. Detail all cores. Report all final copies of drill stems tests giving interval tested, time tool open and closed, flowing and shut-in pressures, whether shut-in pressure reached static level, hydrostatic pressures, bottom hole temperature, fluid recovery, and flow rates if gas to surface test, along with final chart(s). Attach extra sheet if more space is needed. Attach complete copy of all Electric Wire-line Logs surveyed. Attach final geological well site report.

Drill Stem Tests Taken <input checked="" type="checkbox"/> Yes <input type="checkbox"/> No <i>(Attach Additional Sheets)</i> Samples Sent to Geological Survey <input checked="" type="checkbox"/> Yes <input type="checkbox"/> No Cores Taken <input type="checkbox"/> Yes <input checked="" type="checkbox"/> No Electric Log Run <input checked="" type="checkbox"/> Yes <input type="checkbox"/> No Electric Log Submitted Electronically <input checked="" type="checkbox"/> Yes <input type="checkbox"/> No <i>(If no, Submit Copy)</i> List All E. Logs Run: <small>Microresistivity Dual Compensated Porosity Dual Induction</small>	<input checked="" type="checkbox"/> Log Formation (Top), Depth and Datum <input type="checkbox"/> Sample <table style="width:100%; border-collapse: collapse;"> <tr> <td style="width:60%;">Name</td> <td style="width:20%;">Top</td> <td style="width:20%;">Datum</td> </tr> <tr> <td>Anhydrite</td> <td>1502</td> <td>+696</td> </tr> <tr> <td>Topeka</td> <td>3197</td> <td>-999</td> </tr> <tr> <td>Heebner</td> <td>3429</td> <td>-1231</td> </tr> <tr> <td>Lansing/KC</td> <td>3474</td> <td>-1276</td> </tr> <tr> <td>Base KC</td> <td>3715</td> <td>-1517</td> </tr> <tr> <td>Conglomerate</td> <td>3756</td> <td>-1558</td> </tr> </table>	Name	Top	Datum	Anhydrite	1502	+696	Topeka	3197	-999	Heebner	3429	-1231	Lansing/KC	3474	-1276	Base KC	3715	-1517	Conglomerate	3756	-1558
Name	Top	Datum																				
Anhydrite	1502	+696																				
Topeka	3197	-999																				
Heebner	3429	-1231																				
Lansing/KC	3474	-1276																				
Base KC	3715	-1517																				
Conglomerate	3756	-1558																				

CASING RECORD <input checked="" type="checkbox"/> New <input type="checkbox"/> Used							
Report all strings set-conductor, surface, intermediate, production, etc.							
Purpose of String	Size Hole Drilled	Size Casing Set (In O.D.)	Weight Lbs. / Ft.	Setting Depth	Type of Cement	# Sacks Used	Type and Percent Additives
surface	12.25	8.625	20	222	Common	150	3% cc 2% gel
production	7.875	5.5	14	3859	EA-2	200	

ADDITIONAL CEMENTING / SQUEEZE RECORD				
Purpose:	Depth Top Bottom	Type of Cement	# Sacks Used	Type and Percent Additives
<input type="checkbox"/> Perforate <input checked="" type="checkbox"/> Protect Casing <input type="checkbox"/> Plug Back TD <input type="checkbox"/> Plug Off Zone	0-1517	SMD	170	(DV tool)

Shots Per Foot	PERFORATION RECORD - Bridge Plugs Set/Type Specify Footage of Each Interval Perforated	Acid, Fracture, Shot, Cement Squeeze Record <i>(Amount and Kind of Material Used)</i>	Depth
4	3651'-56'	1750 gals 15% acid	
4	3609'-12'		

TUBING RECORD: Size: <u>2.875"</u> Set At: <u>3715'</u> Packer At: _____		Liner Run: <input type="checkbox"/> Yes <input checked="" type="checkbox"/> No	
Date of First, Resumed Production, SWD or ENHR. <u>8/17/2011</u>		Producing Method: <input type="checkbox"/> Flowing <input checked="" type="checkbox"/> Pumping <input type="checkbox"/> Gas Lift <input type="checkbox"/> Other (Explain) _____	
Estimated Production Per 24 Hours	Oil Bbls. <u>30</u>	Gas Mcf <u>5</u>	Water Bbls. Gas-Oil Ratio Gravity <u>5</u> <u> </u> <u>32</u>

DISPOSITION OF GAS: <input checked="" type="checkbox"/> Vented <input type="checkbox"/> Sold <input type="checkbox"/> Used on Lease <i>(If vented, Submit ACO-18.)</i>	METHOD OF COMPLETION: <input type="checkbox"/> Open Hole <input checked="" type="checkbox"/> Perf. <input type="checkbox"/> Dually Comp. <input type="checkbox"/> Commingled <i>(Submit ACO-5)</i> <i>(Submit ACO-4)</i> <input type="checkbox"/> Other (Specify) _____	PRODUCTION INTERVAL: <u>Kansas City</u>
--	--	--

QUALITY OILWELL CEMENTING, INC.

Phone 785-483-2025
Cell 785-324-1041

Home Office P.O. Box 32 Russell, KS

No. 4975

Date	7-9-11	Sec.	19	Twp.	12	Range	18	County	Ellis	State	Ks	On Location	7:30 PM
Lease	Miller	Well No.	#1			Location Hays, Ks - 10 to Burdette Rd, 2 1/4 W							
Contractor	Southwind #1							Owner 3/5					
Type Job	Surface							To Quality Oilwell Cementing, Inc. You are hereby requested to rent cementing equipment and furnish cementer and helper to assist owner or contractor to do work as listed.					
Hole Size	12 1/4"		T.D.		225'		Charge To TDI Inc.						
Csg.	8 3/8"		Depth		222'		Street						
Tbg. Size			Depth				City						
Tool			Depth				State						
Cement Left in Csg.	15'		Shoe Joint		15'		The above was done to satisfaction and supervision of owner agent or contractor.						
Meas Line			Displace		13 BLS		Cement Amount Ordered 1855 sx Common 3% CL, 2% Gel.						

EQUIPMENT

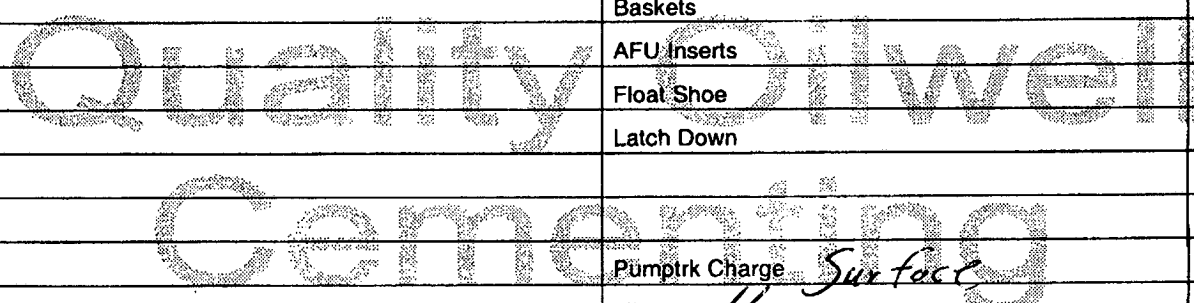
Pumptrk	1	No.	Cementor	Cisco	Common	150
			Helper			
Bulktrk	14	No.	Driver	Matt	Poz. Mix	
			Driver			
Bulktrk	p.u.	No.	Driver	Rick	Gel.	3
			Driver			

JOB SERVICES & REMARKS

Remarks:	Cement did Circulate.	Calcium	5
Rat Hole		Hulls	
Mouse Hole		Salt	
Centralizers		Flowseal	
Baskets		Kol-Seal	
D/V or Port Collar		Mud CLR 48	
		CFL-117 or CD110 CAF 38	

FLOAT EQUIPMENT

	Sand
	Handling 150
	Mileage
	Guide Shoe
	Centralizer
	Baskets
	AFU Inserts
	Float Shoe
	Latch Down



Pumptrk Charge Surface
Mileage 11

x Signature

Frank Renee

Tax
Discount
Total Charge

JOB LOG

SWIFT Services, Inc.

DATE 7-17-11 PAGE NO. 9

CUSTOMER TDI WELL NO. #1 LEASE Miller JOB TYPE 2-stage TICKET NO. 19726

CHART NO.	TIME	RATE (BPM)	VOLUME (BBL) (GAL)	PUMPS		PRESSURE (PSI)		DESCRIPTION OF OPERATION AND MATERIALS
				T	C	TUBING	CASING	
	1815							on loc w/FE
								RTD 3821' LTD 3869' 5 1/2" x 14" x 3868' x 4.3' Cent. 4, 2, 5, 7, 9, 11, 55, 71 Bosh 4, 12, 92, 72 DV 92 @ 1517'
	1910							Start F.E.
	2045							Break Circ.
	2120	4.5	0			150		Start Pref 500gal Mud flush 20 bbl KCL flush
	2127	5.5	32/0			200		Start Cement 200sks EA-2
	2136		48					End Cement wash P/L Drop L.D. Plug
	2140	6	0			200		Start displacement wt. mud
	2150	6	60			200		
	2152	5	70			250		catch Cement (start KCL flush)
	2200		93			600 1500		Land Plug Release pressure / Float Hold
	2205							Drop Opening Plug
	2210	2.5	7					Plug RH 25sks SMD
	2220					1100		Open D.V.
	2225	5.5	0			100		Start Cement 175sks SMD
	2245		110					End Cement Drop Closing Plug
	2248	5	0			100		start Displacement
	2253	4	23			150		Catch Cement
	2253		24			150		Circulate Cement
	2257		37			300 1000		Land Plug Release Pressure DV Closed
	Circ. 35sks to pit							
	Mark Kober							
								Thank you
								Nick, Josh P & Joe

HERB DEINES

CONSULTING GEOLOGIST

108 W. 35th ST.

PH. 785-625-3380

HAYS, KS 67601

COMPANY IDI Inc

WELL Miller #1

FIELD Hyacinth

COUNTY Ellis STATE KANSAS

LOCATION:

1250' FNL & 1200' FEL, NE 1/4

Elevations

KB 2198

DF

GL 2188'

Logging by:

Log-Tech

SEC 19 TWP 12s RGE 18w

- | | |
|---|----|
| 1. <u>Dual Induction Log</u> | 4. |
| 2. <u>Dual Compensated Porosity Log</u> | 5. |
| 3. <u>Microresistivity Log</u> | 6. |

Contractor Southwind Drilling Inc. Rig #1

Commenced 5-09-2011

Completed 7-17-2011

RTD 3871'

LTD 3869'

Surface Casing 8 5/8" set to 222.65' w/ 150sxs Common 2% Gel 3% L

Production Casing 5 1/2" set to 3859' w/ 200 sxs F 62 DV 9 1517' w/ 1200

30 sxs 8 1/2" Plug down 11:00 am 7-17-2011

Drilling Time 3100' - RTD

Samples 3150' - RTD

Daily Penetration Rate

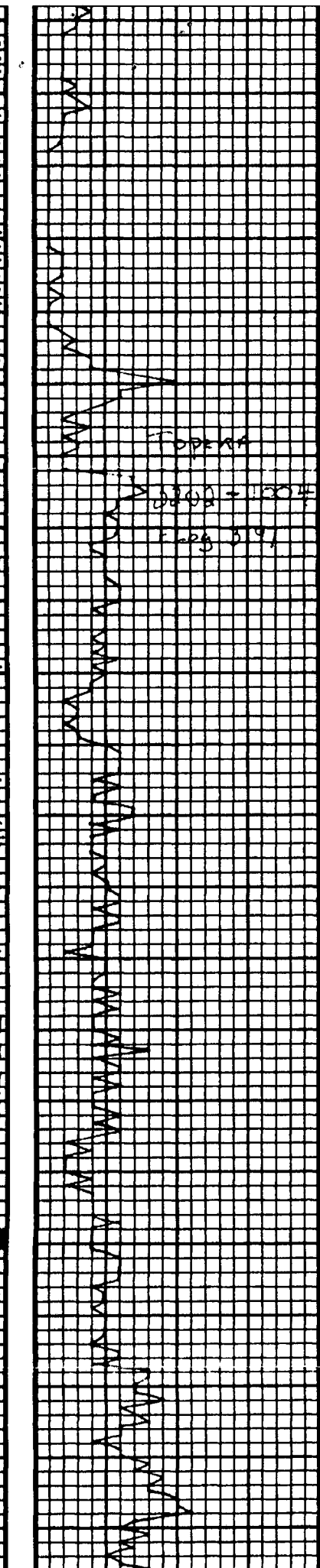
Date	Depth	Activity	Date	Depth	Activity
7-09-11		54 Spud set up			
7-10-11	225'	Finish well on draw works			
7-11-11	1400'	Drill			
7-12-11	2280'	Drill			
7-13-11	2989'	Drill			
7-14-11	3505'	Drill DST #1			
7-15-11	3574'	Drill DST #2			
7-16-11	3720'	Drill DST #3 RTD			
7-17-11	3871'	DST #4 Logg. finish			

FOLD HERE

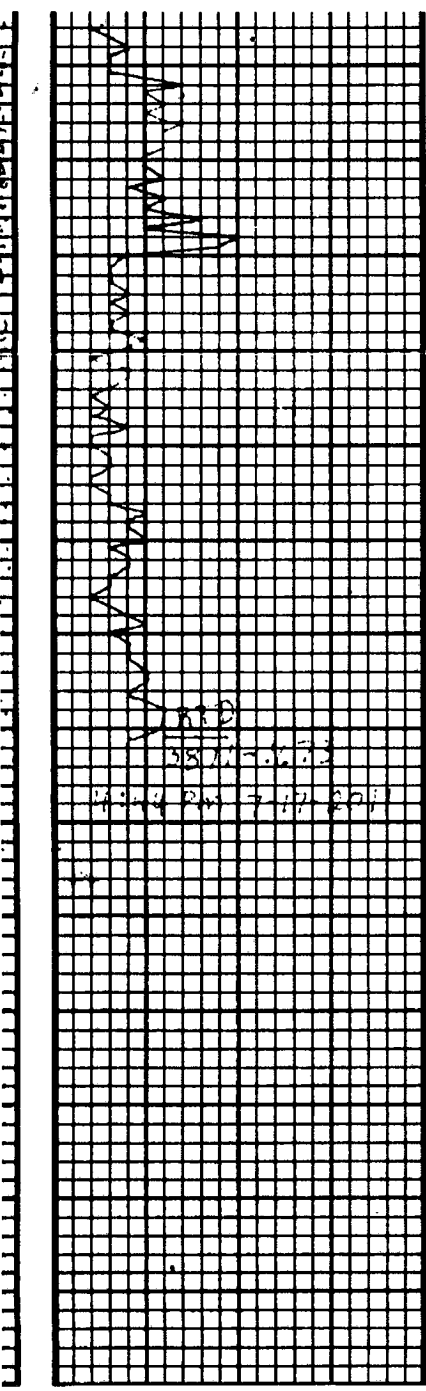
REMARKS Recommendation To Run production casing based on favorable structure and positive results of DSTs

Bit Record

Formation	Sample	Log	Datum	* Formation	Sample	Log	Datum	* Formation
Available Top	1502		+ 696					
Available Base	1537		+ 661					
Top of sand	3177		- 999					
Top of sand	3429		- 1231					
Terminis	3446		- 1248					
LKC	3474		- 1276					
BKC	3715		- 1517					
Compensate Sand	3756		- 1558					
AA bushing	NR							
RTD	3871							
LTD	3869		- 1671					

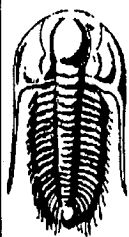


40	lm CAM-bAN FUXIN	
50	Sh lt gray SOFT	
60		
70	Sh lt-Med gray	
80		
90	lm CAM-lt BAN FUXIN	
3200	Sh lt-med gray SOFT	
10	lm CAM-lt BAN FUXIN	
20	lm lt BAN-gray FUXIN	
30	lm wht-CAM FUXIN Sl: Foss	
40	lm CAM-lt BAN FUXIN GRANULA N/S	
50	Sh gray-BLK	
60	lm lt BAN-gray FU-VFXIN	
70	lm CAM-lt BAN FUXIN	
80	lm CAM FUXIN GRANULA	
90	lm wht-CAM-bAN FUXIN GRANULA in 200	
3300	lm CAM-bAN-gray FUXIN	
10	lm CAM-lt BAN GRANULA w chalk Sl: Foss N/S	
20	Sh blk Carb lm CAM-bAN-bAN FUXIN GRANULA	
30	Sh gray calcareous	
40	lm CAM-lt BAN FUXIN GRANULA	
50	lm wht-CAM-Med BAN FUXIN GRANULA w chalk	
60	lm wht-CAM FU-VFXIN chalk in PABT	



3800 ● SS + Chert's med. L. grains - high %
 position in bed - 5% - 10%
 10 SS + Chert's w. increasing L. grains, chert
 + shales
 20 SS + Chert's w. large % variation sand
 SS large grain, mica, well sorted
 grains - 5% - 10% staining in
 at bank stream level
 40 SS + Chert's w. increasing L. grains
 No bed wash noted
 50 SS + Chert's
 60 SS + Chert's
 No bed wash noted
 70 SS + Chert's
 80
 90
 3900

FSIT: 1003
 FR: 33-48, 105-156
 1st Open: Fair blow - BOB 15 min.
 10% surface blow on blow back
 2nd Open: Fair - BOB 18 1/2 min
 Blow back - Surface blow



**TRILOBITE
TESTING, INC.**

DRILL STEM TEST REPORT

TDI Inc.
1310 Bison Rd
Hays, KS 67601
ATTN: Herb Deines

Miller #1
19/12s/18w Ellis KS
Job Ticket: 042914 **DST#: 1**
Test Start: 2011.07.14 @ 12:15:00

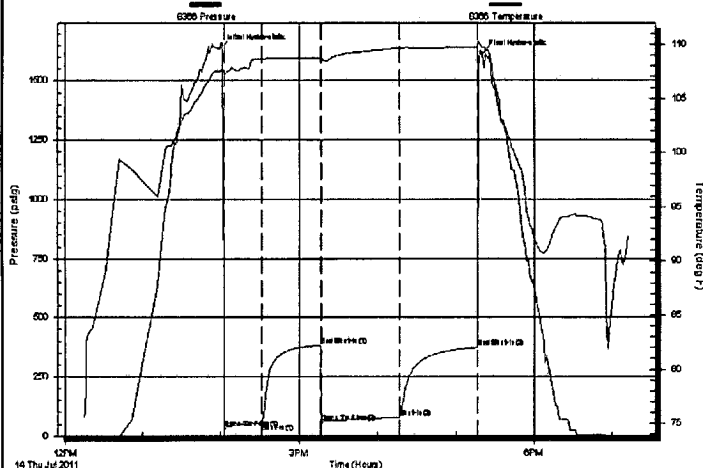
GENERAL INFORMATION:

Formation: **LKC "A - C"**
 Deviated: No Whipstock: ft (KB)
 Time Tool Opened: 14:03:00
 Time Test Ended: 19:13:00
 Interval: **3464.00 ft (KB) To 3524.00 ft (KB) (TVD)**
 Total Depth: 3524.00 ft (KB) (TVD)
 Hole Diameter: 7.88 inches Hole Condition: Fair
 Test Type: Conventional Bottom Hole
 Tester: James Winder
 Unit No: 46
 Reference Elevations: 2198.00 ft (KB)
 2188.00 ft (CF)
 KB to GR/CF: 10.00 ft

Serial #: 8366 **Inside**
 Press@RunDepth: 78.75 psig @ 3465.00 ft (KB) Capacity: 8000.00 psig
 Start Date: 2011.07.14 End Date: 2011.07.14 Last Calib.: 2011.07.14
 Start Time: 12:15:05 End Time: 19:12:59 Time On Btm: 2011.07.14 @ 13:59:30
 Time Off Btm: 2011.07.14 @ 17:20:30

TEST COMMENT: IF: Bled off surge blow at 4 min., Blow built to 3 1/4"
 IS: No blow back
 FF: Blow started at 6 min., built to 5 3/4"
 FS: No blow back

Pressure vs. Time



PRESSURE SUMMARY

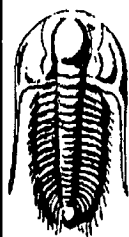
Time (Min.)	Pressure (psig)	Temp (deg F)	Annotation
0	1638.15	107.46	Initial Hydro-static
4	34.22	107.43	Open To Flow (1)
32	54.34	108.66	Shut-In(1)
77	383.86	108.75	End Shut-In(1)
78	58.25	108.68	Open To Flow (2)
137	78.75	109.67	Shut-In(2)
197	372.45	109.74	End Shut-In(2)
201	1615.26	109.76	Final Hydro-static

Recovery

Length (ft)	Description	Volume (bbl)
63.00	SO/MW 54%w, 41%m, 3%g, 2%o	0.88
78.00	OCM 88%m, 11%o, 1%g	1.09

Gas Rates

	Choke (inches)	Pressure (psig)	Gas Rate (Mcf/d)



**TRILOBITE
TESTING, INC**

DRILL STEM TEST REPORT

FLUID SUMMARY

TDI Inc.
1310 Bison Rd
Hays, KS 67601
ATTN: Herb Deines

Miller #1
19/12s/18w Ellis KS
Job Ticket: 042914 **DST#: 1**
Test Start: 2011.07.14 @ 12:15:00

Mud and Cushion Information

Mud Type: Gel Chem	Cushion Type:	Oil API:	deg API
Mud Weight: 9.00 lb/gal	Cushion Length: ft	Water Salinity:	28000 ppm
Viscosity: 53.00 sec/qt	Cushion Volume: bbl		
Water Loss: 6.40 in ³	Gas Cushion Type:		
Resistivity: ohm.m	Gas Cushion Pressure: psig		
Salinity: 2800.00 ppm			
Filter Cake: 1.00 inches			

Recovery Information

Recovery Table

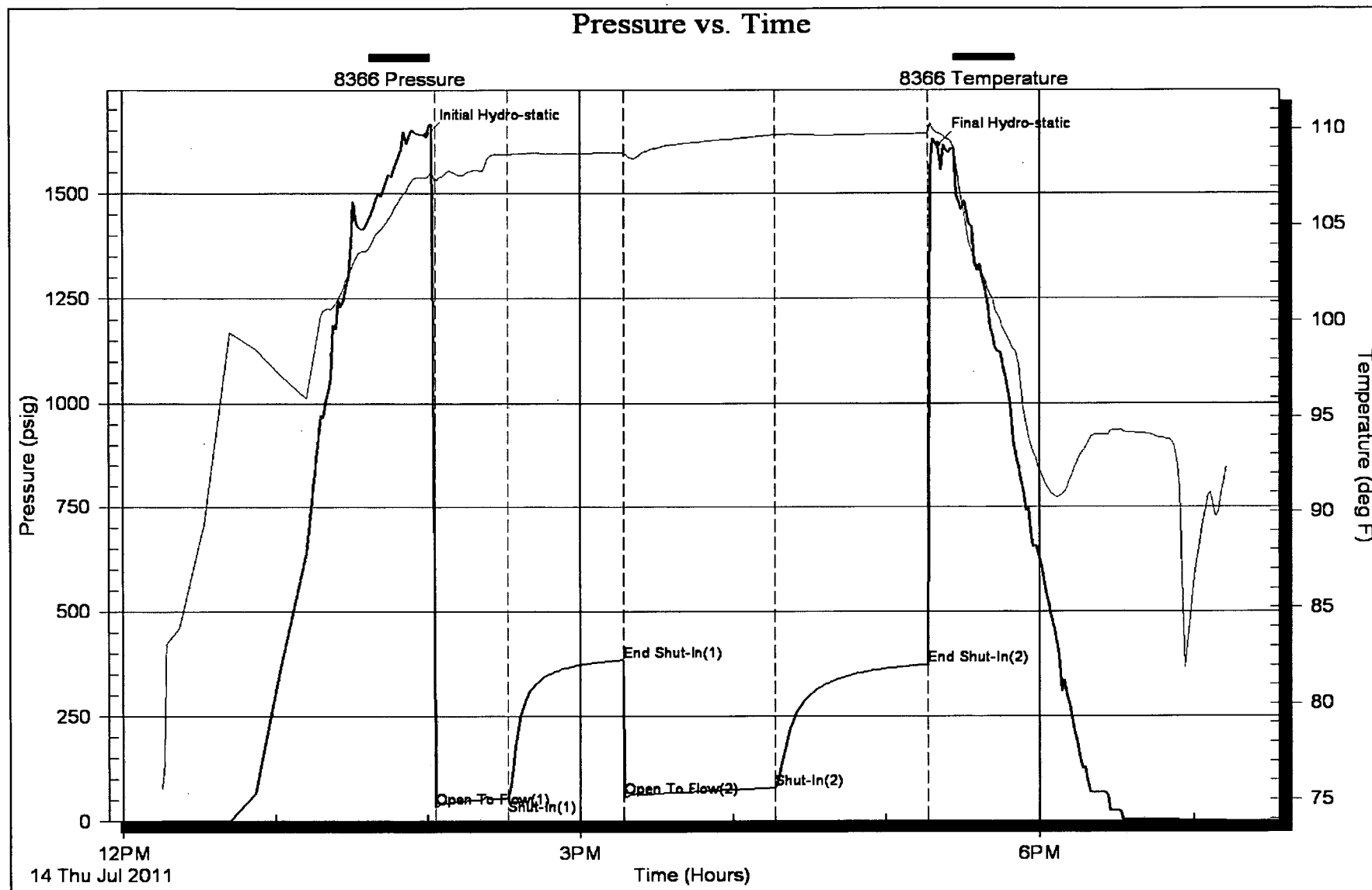
Length ft	Description	Volume bbl
63.00	SO/MW 54%w, 41%m, 3%g, 2%o	0.884
78.00	OCM 88%m, 11%o, 1%g	1.094

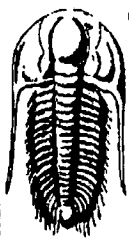
Total Length: 141.00 ft Total Volume: 1.978 bbl

Num Fluid Samples: 0 Num Gas Bombs: 0 Serial #:

Laboratory Name: Laboratory Location:

Recovery Comments: RW = .184 ohms @ 94.9 deg F
Chlorides = 28,000 ppm





**TRILOBITE
TESTING, INC.**

DRILL STEM TEST REPORT

TDI Inc.
1310 Bison Rd
Hays, KS 67601
ATTN: Herb Deines

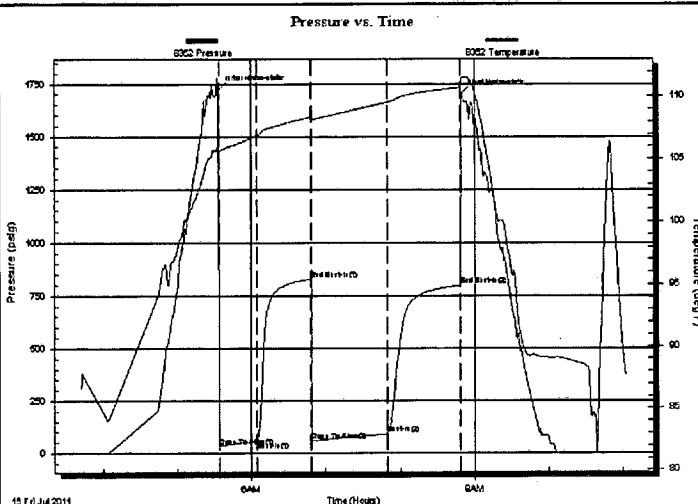
Miller #1
19/12s/18w Ellis KS
Job Ticket: 45180 **DST#: 2**
Test Start: 2011.07.15 @ 03:42:00

GENERAL INFORMATION:

Formation: **KC "D-G"**
 Deviated: No Whipstock: ft (KB)
 Time Tool Opened: 05:33:50
 Time Test Ended: 11:02:39
 Interval: **3524.00 ft (KB) To 3574.00 ft (KB) (TVD)**
 Total Depth: 3574.00 ft (KB) (TVD)
 Hole Diameter: 7.88 inches Hole Condition: Fair
 Test Type: Conventional Bottom Hole
 Tester: Cody Bloedorn
 Unit No: 38
 Reference Elevations: 2198.00 ft (KB)
 2188.00 ft (CF)
 KB to GR/CF: 10.00 ft

Serial #: 8352 Inside
 Press@RunDepth: 90.64 psig @ 3563.00 ft (KB) Capacity: 8000.00 psig
 Start Date: 2011.07.15 End Date: 2011.07.15 Last Calib.: 2011.07.15
 Start Time: 03:42:05 End Time: 11:02:39 Time On Btm: 2011.07.15 @ 05:33:40
 Time Off Btm: 2011.07.15 @ 08:49:30

TEST COMMENT: 30 - IF- 4" blow
 45 - IS- No blow back
 60 - FF- 1" blow
 60 - FSI- no blow back



PRESSURE SUMMARY

Time (Min.)	Pressure (psig)	Temp (deg F)	Annotation
0	1725.78	105.94	Initial Hydro-static
1	34.76	105.13	Open To Flow (1)
31	56.21	106.83	Shut-in(1)
75	829.00	108.33	End Shut-in(1)
76	60.37	108.09	Open To Flow (2)
136	90.64	109.50	Shut-in(2)
195	798.75	110.71	End Shut-in(2)
196	1700.85	111.46	Final Hydro-static

Recovery

Length (ft)	Description	Volume (bbl)
62.00	MW, Oil scrub 40%M, 60%W	0.87
62.00	VSOCWM 5%O, 10%W, 85%M	0.87
20.00	Free Oil	0.28

Gas Rates

	Choke (inches)	Pressure (psig)	Gas Rate (Mcf/d)



**TRILOBITE
TESTING, INC.**

DRILL STEM TEST REPORT

FLUID SUMMARY

TDI Inc.
1310 Bison Rd
Hays, KS 67601
ATTN: Herb Deines

Miller #1
19/12s/18w Ellis KS
Job Ticket: 45180 **DST#: 2**
Test Start: 2011.07.15 @ 03:42:00

Mud and Cushion Information

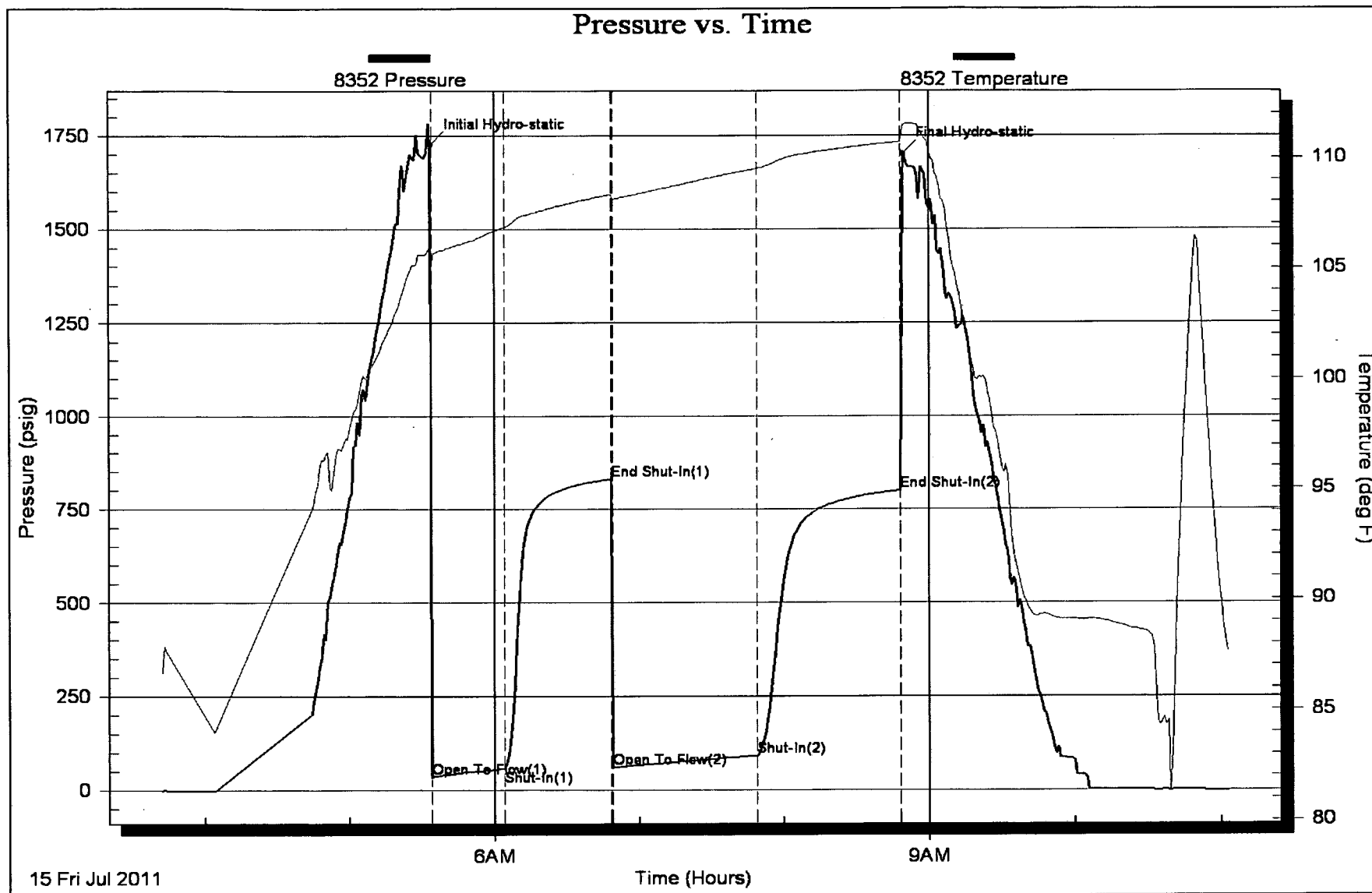
Mud Type: Gel Chem	Cushion Type:	Oil API: 27 deg API
Mud Weight: 9.00 lb/gal	Cushion Length: ft	Water Salinity: 34000 ppm
Viscosity: 53.00 sec/qt	Cushion Volume: bbl	
Water Loss: 6.40 in ³	Gas Cushion Type:	
Resistivity: ohm.m	Gas Cushion Pressure: psig	
Salinity: 2800.00 ppm		
Filter Cake: 1.00 inches		

Recovery Information

Recovery Table

Length ft	Description	Volume bbl
62.00	MW, Oil scum 40%O, 60%W	0.870
62.00	VSOCWM 5%O, 10%W, 85%M	0.870
20.00	Free Oil	0.281

Total Length: 144.00 ft Total Volume: 2.021 bbl
 Num Fluid Samples: 0 Num Gas Bombs: 0 Serial #:
 Laboratory Name: Laboratory Location:
 Recovery Comments: Water Salinity: .13 @ 101 Degees = 34,000
 Oil Gravity: 30 @ 96 Degrees = 27





**TRILOBITE
TESTING, INC.**

DRILL STEM TEST REPORT

TDI Inc.
1310 Bison Rd
Hays, KS 67601

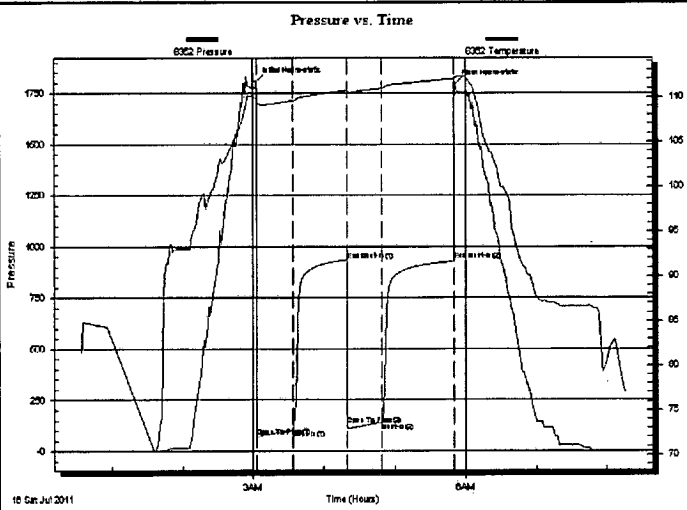
Miller #1
19/12s/18w Ellis KS
Job Ticket: 45181 **DST#: 3**
Test Start: 2011.07.16 @ 00:34:00

GENERAL INFORMATION:

Formation: **KC "H-L"**
 Deviated: No Whipstock: ft (KB)
 Time Tool Opened: 03:03:10
 Time Test Ended: 08:15:20
 Interval: **3600.00 ft (KB) To 3720.00 ft (KB) (TVD)**
 Total Depth: 3720.00 ft (KB) (TVD)
 Hole Diameter: 7.88 inches Hole Condition: Fair
 Test Type: Conventional Bottom Hole
 Tester: Cody Bloedorn
 Unit No: 38
 Reference Elevations: 2198.00 ft (KB)
 2188.00 ft (CF)
 KB to GR/CF: 10.00 ft

Serial #: 8352 Outside
 Press@RunDepth: 140.04 psig @ 3701.00 ft (KB) Capacity: 8000.00 psig
 Start Date: 2011.07.16 End Date: 2011.07.16 Last Calib.: 2011.07.16
 Start Time: 00:34:05 End Time: 08:15:20 Time On Btm: 2011.07.16 @ 03:03:00
 Time Off Btm: 2011.07.16 @ 05:51:09

TEST COMMENT: 30 - IF- B.O.B. in 6 Min.
 45 - ISL- 1/2" blow, died in 22 Min.
 30 - FF- B.O.B. In 8 Min
 60 - FSL- 7" blow



PRESSURE SUMMARY

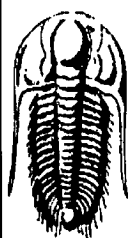
Time (Min.)	Pressure (psig)	Temp (deg F)	Annotation
0	1807.68	109.73	Initial Hydro-static
1	69.56	108.96	Open To Flow (1)
31	104.59	109.56	Shut-In(1)
77	934.26	110.70	End Shut-In(1)
77	128.89	110.23	Open To Flow (2)
107	140.04	110.94	Shut-In(2)
168	930.98	111.95	End Shut-In(2)
169	1794.35	112.15	Final Hydro-static

Recovery

Length (ft)	Description	Volume (bbl)
62.00	GO, 10%G, 90%O	0.87
62.00	GO, 40%G, 60%O	0.87
62.00	GOCM, 10%O, 20%G, 70%M	0.87
62.00	GMCO, 5%M, 35%G, 60%O	0.87
0.00	17 Stands of G.I.P.	0.00

Gas Rates

	Choke (inches)	Pressure (psig)	Gas Rate (Mcf/d)



**TRILOBITE
TESTING, INC.**

DRILL STEM TEST REPORT

FLUID SUMMARY

TDI Inc.
1310 Bison Rd
Hays, KS 67601

ATTN: Herb Deines

Miller #1
19/12s/18w Ellis KS
Job Ticket: 45181 **DST#: 3**
Test Start: 2011.07.16 @ 00:34:00

Mud and Cushion Information

Mud Type: Gel Chem	Cushion Type:	Oil API:	33 deg API
Mud Weight: 9.00 lb/gal	Cushion Length: ft	Water Salinity:	ppm
Viscosity: 53.00 sec/qt	Cushion Volume: bbl		
Water Loss: 6.39 in ³	Gas Cushion Type:		
Resistivity: ohm.m	Gas Cushion Pressure: psig		
Salinity: 2800.00 ppm			
Filter Cake: 1.00 inches			

Recovery Information

Recovery Table

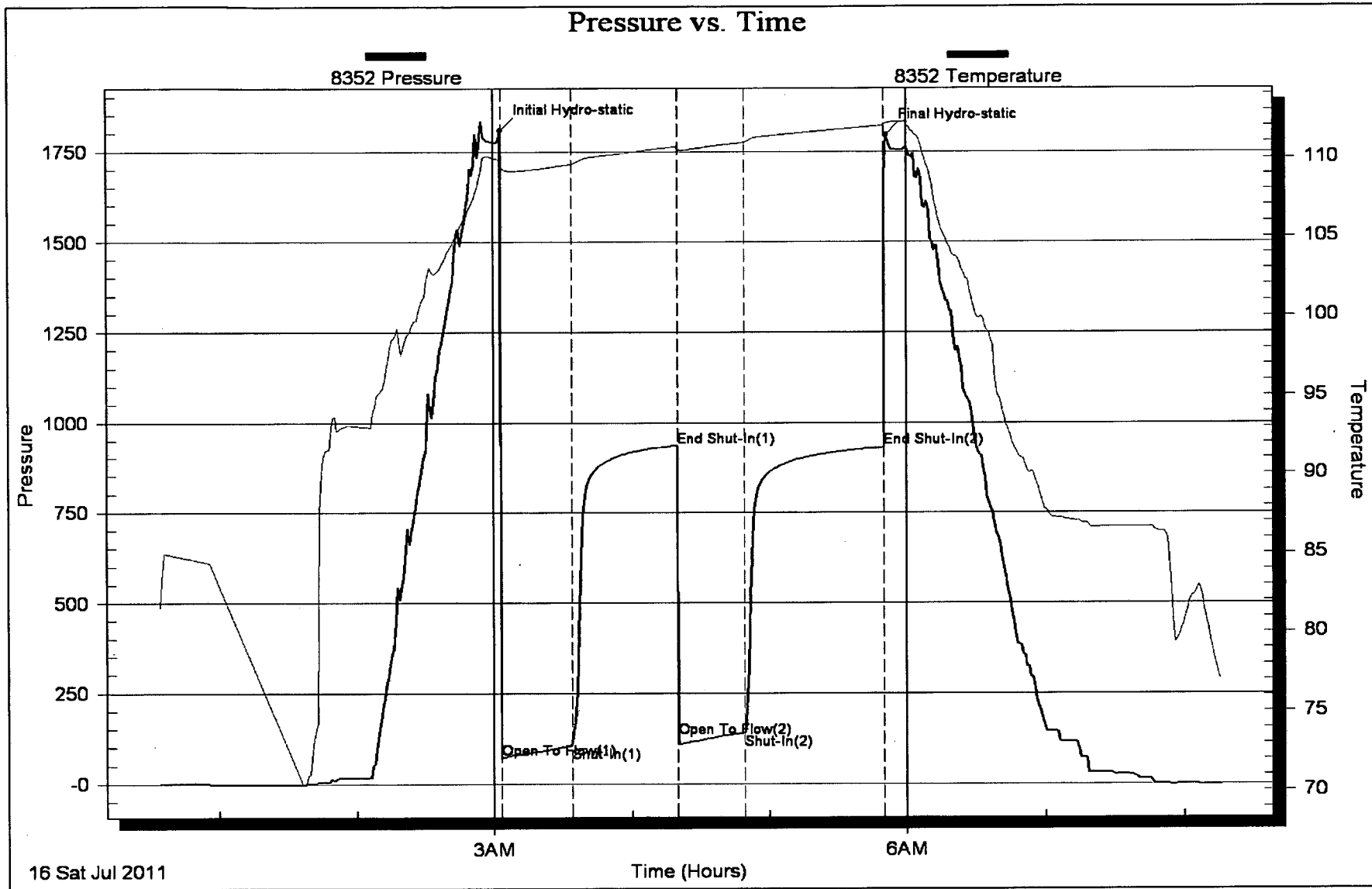
Length ft	Description	Volume bbl
62.00	GO, 10%G, 90%O	0.870
62.00	GO, 40%G, 60%O	0.870
62.00	GOCM, 10%O, 20%G, 70%M	0.870
62.00	GMCO, 5%M, 35%G, 60%O	0.870
0.00	17 Stands of G.I.P.	0.000

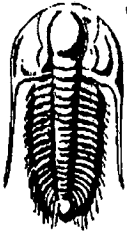
Total Length: 248.00 ft Total Volume: 3.480 bbl

Num Fluid Samples: 0 Num Gas Bombs: 0 Serial #:

Laboratory Name: Laboratory Location:

Recovery Comments: Gravity: 35 @ 80 Degrees = 33 Gravity





TRILOBITE TESTING, INC.

DRILL STEM TEST REPORT

TDI Inc.
1310 Bison Rd
Hays, KS 67601
ATTN: Herb Deines

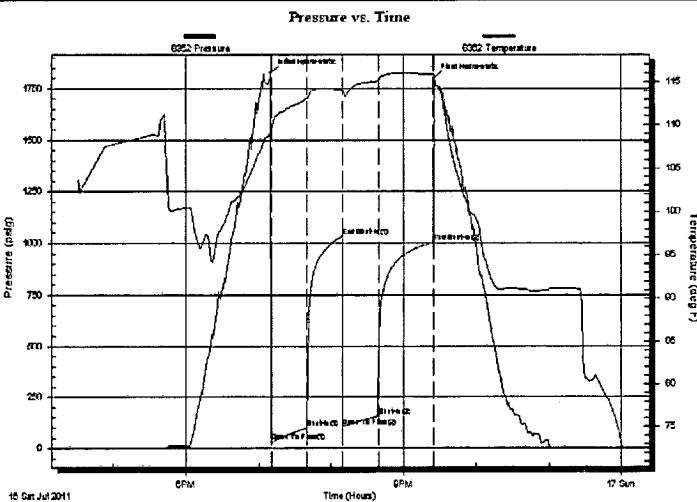
Miller #1
19/12s/18w Ellis KS
Job Ticket: 45182 **DST#: 4**
Test Start: 2011.07.16 @ 16:31:00

GENERAL INFORMATION:

Formation: **CG Sand**
 Deviated: No Whipstock: ft (KB)
 Time Tool Opened: 19:10:20
 Time Test Ended: 00:01:00
 Test Type: Conventional Bottom Hole
 Tester: Cody Bloedorn
 Unit No: 38
 Interval: **3756.00 ft (KB) To 3785.00 ft (KB) (TVD)**
 Total Depth: 3785.00 ft (KB) (TVD)
 Reference Elevations: 2198.00 ft (KB)
 2188.00 ft (CF)
 Hole Diameter: 7.88 inches Hole Condition: Fair
 KB to GR/CF: 10.00 ft

Serial #: 8352 Inside
 Press@RunDepth: 156.36 psig @ 3757.00 ft (KB) Capacity: 8000.00 psig
 Start Date: 2011.07.16 End Date: 2011.07.17 Last Calib.: 2011.07.17
 Start Time: 16:31:05 End Time: 00:00:59 Time On Btm: 2011.07.16 @ 19:10:10
 Time Off Btm: 2011.07.16 @ 21:25:30

TEST COMMENT: 30 - IF- B.O.B. in 15 Min
 30 - IS- Weak surface blow
 30 - FF- B.O.B. in 18 Min, 30 Sec.
 45 - FS- Surface blow



PRESSURE SUMMARY

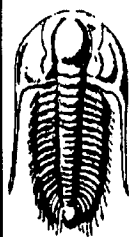
Time (Min.)	Pressure (psig)	Temp (deg F)	Annotation
0	1825.37	109.72	Initial Hydro-static
1	33.06	109.17	Open To Flow (1)
30	98.35	113.08	Shut-In(1)
60	1031.99	114.13	End Shut-In(1)
60	105.80	113.55	Open To Flow (2)
90	156.36	115.07	Shut-In(2)
135	1003.28	115.89	End Shut-In(2)
136	1799.80	115.75	Final Hydro-static

Recovery

Length (ft)	Description	Volume (bbl)
62.00	GMCO, 10%M, 15%G, 75%O	0.87
124.00	GHOCM, 10%M, 50%O, 40%G	1.74
155.00	GO, 5%G, 95%O	2.17

Gas Rates

	Choke (inches)	Pressure (psig)	Gas Rate (Mcf/d)



**TRILOBITE
TESTING, INC**

DRILL STEM TEST REPORT

FLUID SUMMARY

TDI Inc.
1310 Bison Rd
Hays, KS 67601
ATTN: Herb Deines

Miller #1
19/12s/18w Ellis KS
Job Ticket: 45182 **DST#: 4**
Test Start: 2011.07.16 @ 16:31:00

Mud and Cushion Information

Mud Type: Gel Chem	Cushion Type:	Oil API:	18 deg API
Mud Weight: 9.00 lb/gal	Cushion Length: ft	Water Salinity:	ppm
Viscosity: 41.00 sec/qt	Cushion Volume: bbl		
Water Loss: 11.19 in ³	Gas Cushion Type:		
Resistivity: ohm.m	Gas Cushion Pressure: psig		
Salinity: 5500.00 ppm			
Filter Cake: inches			

Recovery Information

Recovery Table

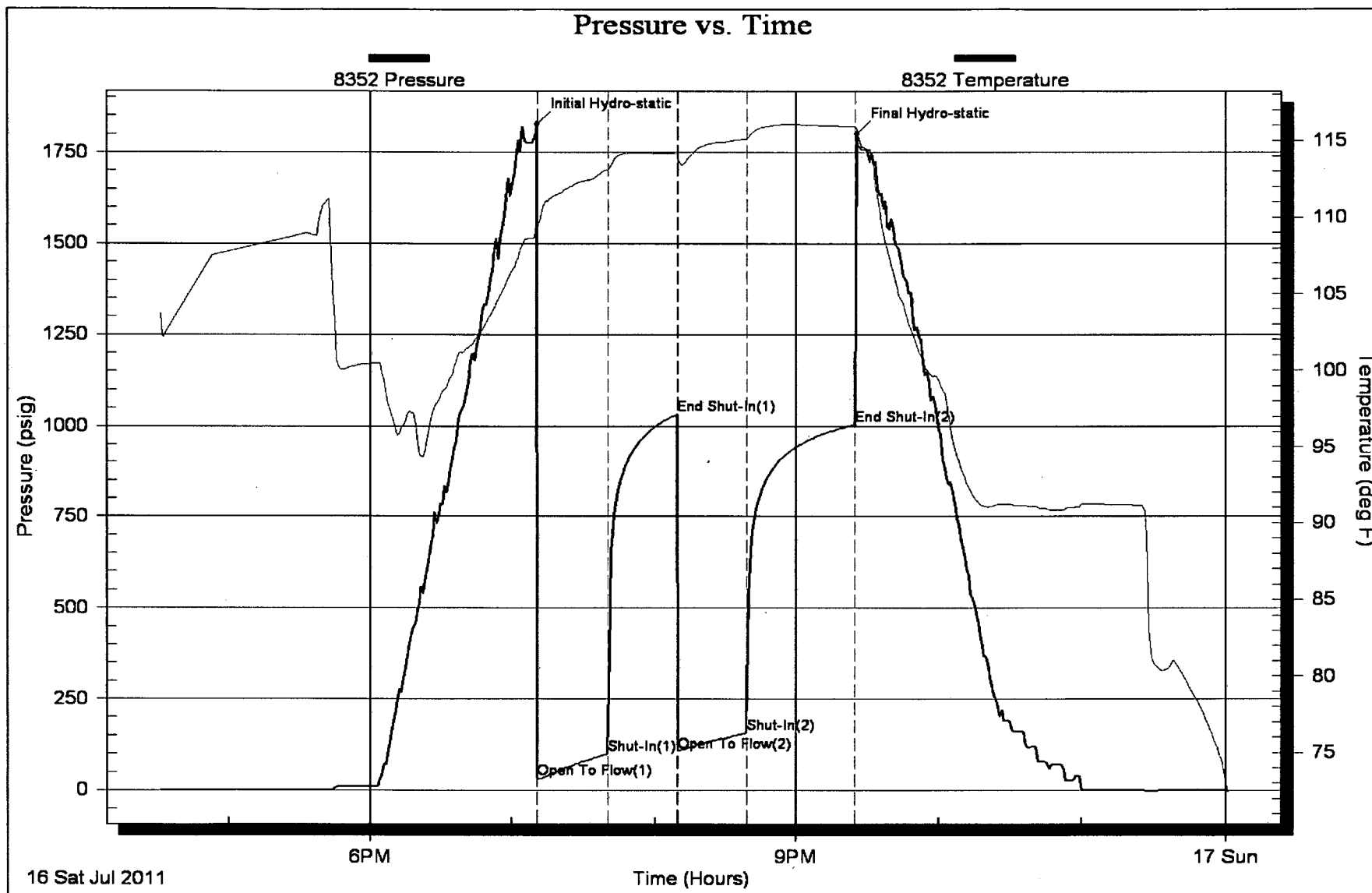
Length ft	Description	Volume bbl
62.00	GMCO, 10%M, 15%G, 75%O	0.870
124.00	GHOCM, 10%M, 50%O, 40%G	1.739
155.00	GO, 5%G, 95%O	2.174

Total Length: 341.00 ft Total Volume: 4.783 bbl

Num Fluid Samples: 0 Num Gas Bombs: 0 Serial #:

Laboratory Name: Laboratory Location:

Recovery Comments: Gravity: 20 @ 80 Degrees = 18 Gravity



Conservation Division
Finney State Office Building
130 S. Market, Rm. 2078
Wichita, KS 67202-3802



Phone: 316-337-6200
Fax: 316-337-6211
<http://kcc.ks.gov/>

Mark Sievers, Chairman
Ward Loyd, Commissioner
Thomas E. Wright, Commissioner

Sam Brownback, Governor

July 26, 2011

TDI, Inc.
1310 BISON RD
HAYS, KS 67601-9696

Re: ACO1
API 15-051-26141-00-00
Miller 1
NE/4 Sec.19-12S-18W
Ellis County, Kansas

Dear Production Department:

We are herewith requesting that the Well Completion Form ACO-1 and attached information for the subject well be held confidential for a period of two years.

Should you have any questions or need additional information regarding subject well, please contact our office.

Respectfully,
Tom Denning

Conservation Division
Finney State Office Building
130 S. Market, Rm. 2078
Wichita, KS 67202-3802



Phone: 316-337-6200
Fax: 316-337-6211
<http://kcc.ks.gov/>

Mark Sievers, Chairman
Ward Loyd, Commissioner
Thomas E. Wright, Commissioner

Sam Brownback, Governor

January 10, 2012

Tom Denning
TDI, Inc.
1310 BISON RD
HAYS, KS 67601-9696

Re: ACO-1
API 15-051-26141-00-00
Miller 1
NE/4 Sec.19-12S-18W
Ellis County, Kansas

Dear Tom Denning:

K.A.R. 82-3-107 provides for all completion information to be filed within 120 days of the spud date. Subsection(e)(2) of that regulation states "All rights to confidentiality shall be lost if the filings are not timely."

The above referenced well was spudded on 7/9/2011 and the ACO-1 was received on January 10, 2012 (not within the 120 days timely requirement).

Therefore, your request for confidential treatment of data contained within the ACO-1 filing cannot be granted at this time.

If you should have any questions, please do not hesitate to contact me at (316)337-6200.

Sincerely,

Production Department