



KANSAS CORPORATION COMMISSION 1074536  
OIL & GAS CONSERVATION DIVISION

Form ACO-1  
June 2009  
Form Must Be Typed  
Form must be Signed  
All blanks must be Filled

WELL COMPLETION FORM  
WELL HISTORY - DESCRIPTION OF WELL & LEASE

OPERATOR: License # 34601  
Name: Wold Oil Properties, Inc.  
Address 1: 139 W. 2ND ST., STE 200  
Address 2:  
City: CASPER State: WY Zip: 82601  
Contact Person: Kevin Meenan  
Phone: (307) 265-7252  
CONTRACTOR: License # 30606  
Name: Murfin Drilling Co., Inc.  
Wellsite Geologist: Aaron Ottoman  
Purchaser:

Designate Type of Completion:  
 New Well  Re-Entry  Workover  
 Oil  WSW  SWD  SIOW  
 Gas  D&A  ENHR  SIGW  
 OG  GSW  Temp. Abd.  
 CM (Coal Bed Methane)  
 Cathodic  Other (Core, Expl., etc.):

If Workover/Re-entry: Old Well Info as follows:  
Operator:

Well Name:

Original Comp. Date: Original Total Depth:  
 Deepening  Re-perf.  Conv. to ENHR  Conv. to SWD  
 Conv. to GSW  
 Plug Back: Plug Back Total Depth  
 Commingled Permit #:  
 Dual Completion Permit #:  
 SWD Permit #:  
 ENHR Permit #:  
 GSW Permit #:

10/05/2011	10/13/2011	10/25/2011
Spud Date or Recompletion Date	Date Reached TD	Completion Date or Recompletion Date

API No. 15 - 15-109-21041-00-00

Spot Description:  
NW NW SE SE Sec. 2 Twp. 13 S. R. 35  East  West  
1187 Feet from  North /  South Line of Section  
1286 Feet from  East /  West Line of Section

Footages Calculated from Nearest Outside Section Corner:  
 NE  NW  SE  SW

County: Logan  
Lease Name: Siruta Well #: 1-2

Field Name:

Producing Formation: Altamont

Elevation: Ground: 3045 Kelly Bushing: 3057

Total Depth: 4708 Plug Back Total Depth: 4708

Amount of Surface Pipe Set and Cemented at: 227 Feet

Multiple Stage Cementing Collar Used?  Yes  No

If yes, show depth set: 2497 Feet

If Alternate II completion, cement circulated from: 2497

feet depth to: 0 w/ 375 sx cmt.

Drilling Fluid Management Plan  
(Data must be collected from the Reserve Pit)

Chloride content: 8000 ppm Fluid volume: 780 bbls

Dewatering method used: Evaporated

Location of fluid disposal if hauled offsite:

Operator Name:

Lease Name: License #:

Quarter Sec. Twp. S. R.  East  West

County: Permit #:

AFFIDAVIT

I am the affiant and I hereby certify that all requirements of the statutes, rules and regulations promulgated to regulate the oil and gas industry have been fully complied with and the statements herein are complete and correct to the best of my knowledge.

Submitted Electronically

KCC Office Use ONLY

Letter of Confidentiality Received  
Date: 02/20/2012  
 Confidential Release Date:  
 Wireline Log Received  
 Geologist Report Received  
 UIC Distribution  
ALT  I  II  III Approved by: Deanna Gamba Date: 02/22/2012



1074536

Operator Name: Wold Oil Properties, Inc. Lease Name: Siruta Well #: 1-2  
 Sec. 2 Twp. 13 S. R. 35  East  West County: Logan

**INSTRUCTIONS:** Show important tops and base of formations penetrated. Detail all cores. Report all final copies of drill stems tests giving interval tested, time tool open and closed, flowing and shut-in pressures, whether shut-in pressure reached static level, hydrostatic pressures, bottom hole temperature, fluid recovery, and flow rates if gas to surface test, along with final chart(s). Attach extra sheet if more space is needed. Attach complete copy of all Electric Wire-line Logs surveyed. Attach final geological well site report.

Drill Stem Tests Taken  Yes  No  Log Formation (Top), Depth and Datum  Sample  
 (Attach Additional Sheets)

Samples Sent to Geological Survey  Yes  No Name Top Datum  
 Attached Attached Attached

Cores Taken  Yes  No  
 Electric Log Run  Yes  No  
 Electric Log Submitted Electronically  Yes  No  
 (If no, Submit Copy)

List All E. Logs Run:

GR-EL-Ind-Micro  
 Sonic  
 Neutron-Den

**CASING RECORD**  New  Used  
 Report all strings set-conductor, surface, intermediate, production, etc.

Purpose of String	Size Hole Drilled	Size Casing Set (In O.D.)	Weight Lbs. / Ft.	Setting Depth	Type of Cement	# Sacks Used	Type and Percent Additives
Surface	12.25	8.625	23	227	Class G	200	2% Gel
Production	7.875	5.5	15.5	4709	Class G	130	10% Salt

**ADDITIONAL CEMENTING / SQUEEZE RECORD**

Purpose:	Depth Top Bottom	Type of Cement	# Sacks Used	Type and Percent Additives
Perforate				
Protect Casing				
Plug Back TD				
Plug Off Zone				

**PERFORATION RECORD - Bridge Plugs Set/Type**  
 Specify Footage of Each Interval Perforated

Shots Per Foot	PERFORATION RECORD - Bridge Plugs Set/Type Specify Footage of Each Interval Perforated	Acid, Fracture, Shot, Cement Squeeze Record (Amount and Kind of Material Used)	Depth
4	4272-4278, 4286-4314	250 g 15% MCA, 1500 g 15% HCl	

**TUBING RECORD:** Size: 2 7/8 J55 Set At: 4356 Packer At: \_\_\_\_\_ Liner Run:  Yes  No

Date of First, Resumed Production, SWD or ENHR. 10/27/2011 Producing Method:  Flowing  Pumping  Gas Lift  Other (Explain) Swabbing

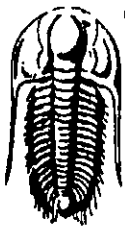
Estimated Production Per 24 Hours	Oil Bbls.	Gas Mcf	Water Bbls.	Gas-Oil Ratio	Gravity
	8	0	0	0	36

DISPOSITION OF GAS: <input type="checkbox"/> Vented <input type="checkbox"/> Sold <input type="checkbox"/> Used on Lease (If vented, Submit ACO-18.)	METHOD OF COMPLETION: <input type="checkbox"/> Open Hole <input checked="" type="checkbox"/> Perf. <input type="checkbox"/> Dually Comp. <input type="checkbox"/> Commingled (Submit ACO-5) (Submit ACO-4)		PRODUCTION INTERVAL: 4272-4278 4286-4314
	<input type="checkbox"/> Other (Specify) _____		

Form	ACO1 - Well Completion
Operator	Wold Oil Properties, Inc.
Well Name	Siruta 1-2
Doc ID	1074536

Tops

Anhydrite	2462	595
Topeka	3627	-570
Heebner	3853	-796
Lansing	3902	-845
Altamont	4282	-1225
Pawnee	4358	-1301
Johnson	4486	-1429
Mississippian	4635	-1578



**TRILOBITE TESTING, INC.**

## DRILL STEM TEST REPORT

World Oil Properties  
 139 W 2nd. St STE 200  
 Casper Wy. 82601  
 ATTN: Robert Hendrix

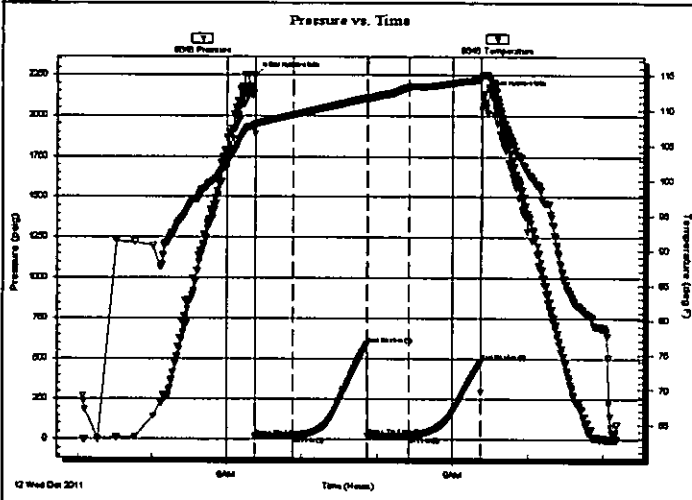
**2-13-35 Logan KS**  
**Sirvta #1-2**  
 Job Ticket: 43216      **DST#: 3**  
 Test Start: 2011.10.12 @ 04:04:15

### GENERAL INFORMATION:

Formation: **Lower Altamont**  
 Deviated: **No Whipstock:**      ft (KB)  
 Time Tool Opened: 06:22:45  
 Time Test Ended: 11:11:30  
 Interval: **4313.00 ft (KB) To 4350.00 ft (KB) (TVD)**  
 Total Depth: **4350.00 ft (KB) (TVD)**  
 Hole Diameter: **7.88 inches** Hole Condition: Fair  
 Test Type: **Conventional Bottom Hole (Reset)**  
 Tester: **Mike Roberts**  
 Unit No: **48**  
 Reference Elevations: **3057.00 ft (KB)**  
    **3047.00 ft (CF)**  
    KB to GR/CF: **10.00 ft**

Serial #: **8646**      **Outside**  
 Press@RunDepth: **19.99 psig @ 4345.00 ft (KB)**  
 Start Date: **2011.10.12**      End Date: **2011.10.12**  
 Start Time: **04:04:15**      End Time: **11:11:30**  
 Capacity: **8000.00 psig**  
 Last Calib.: **2011.10.12**  
 Time On Btrm: **2011.10.12 @ 06:22:30**  
 Time Off Btrm: **2011.10.12 @ 09:24:00**

TEST COMMENT: IF: Built to weak surface blow  
 IS: No return blow  
 FF: No blow  
 FS: No return blow

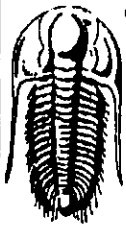


PRESSURE SUMMARY			
Time (Min.)	Pressure (psig)	Temp (deg F)	Annotation
0	2242.56	107.93	Initial Hydro-static
1	14.82	106.57	Open To Flow (1)
31	18.74	109.27	Shut-in(1)
90	588.23	111.66	End Shut-in(1)
90	18.12	111.44	Open To Flow (2)
123	19.99	113.23	Shut-in(2)
180	478.32	114.37	End Shut-in(2)
182	2132.11	115.01	Final Hydro-static

Recovery		
Length (ft)	Description	Volume (bbl)
5.00	mud with oil spots	0.02

Gas Rates			
	Choke (inches)	Pressure (psig)	Gas Rate (Mcf/d)

\* Recovery from multiple tests



**TRILOBITE  
TESTING, INC.**

## DRILL STEM TEST REPORT

**FLUID SUMMARY**

Wold Oil Properties  
139 W 2nd. St STE 200  
Casper Wy. 82601  
ATTN: Robert Hendrix

**2-13-35 Logan KS**  
**Sirvta #1-2**  
Job Ticket: 43216      **DST#: 3**  
Test Start: 2011.10.12 @ 04:04:15

### Mud and Cushion Information

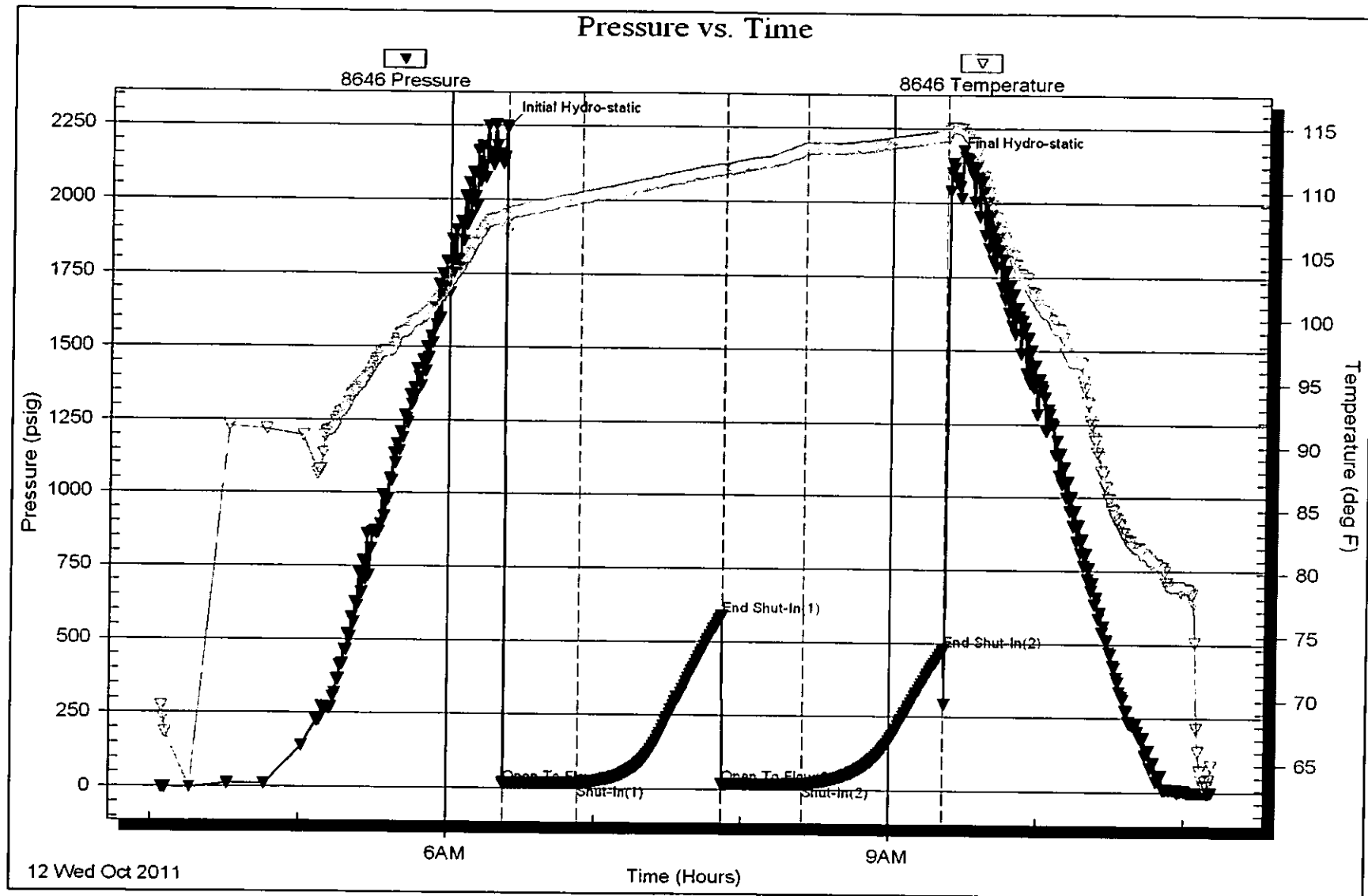
Mud Type: Gel Chem	Cushion Type:	Oil API:	0 deg API
Mud Weight: 9.00 lb/gal	Cushion Length: ft	Water Salinity:	0 ppm
Viscosity: 58.00 sec/qt	Cushion Volume: bbl		
Water Loss: 7.20 in <sup>3</sup>	Gas Cushion Type:		
Resistivity: 0.00 ohm.m	Gas Cushion Pressure: psig		
Salinity: 8900.00 ppm			
Filter Cake: 2.00 inches			

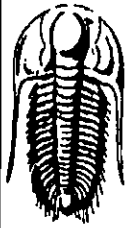
### Recovery Information

Recovery Table

Length ft	Description	Volume bbl
5.00	mud w ith oil spots	0.025

Total Length: 5.00 ft      Total Volume: 0.025 bbl  
Num Fluid Samples: 0      Num Gas Bombs: 0      Serial #:  
Laboratory Name:      Laboratory Location:  
Recovery Comments:





**TRILOBITE  
TESTING, INC.**

## DRILL STEM TEST REPORT

World Oil Properties  
139 W 2nd. St STE 200  
Casper Wy. 82601  
ATTN: Robert Hendrix

2-13-35 Logan KS

Sirvta #1-2

Job Ticket: 43215

DST#: 2

Test Start: 2011.10.11 @ 10:57:15

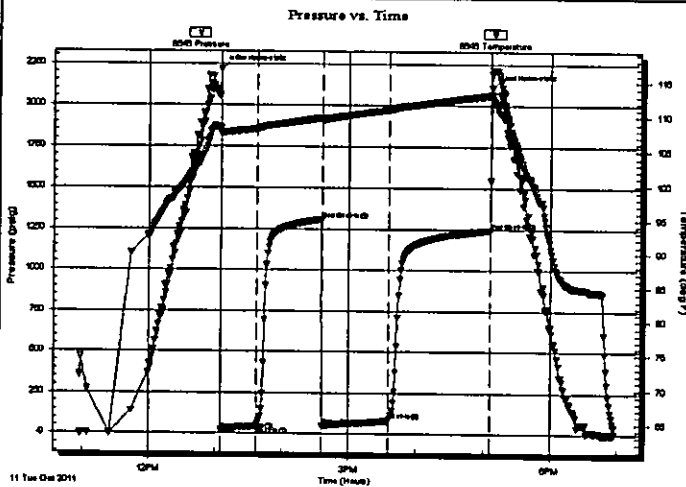
### GENERAL INFORMATION:

Formation: **Altamont**  
Deviated: No Whipstock: ft (KB)  
Time Tool Opened: 13:05:30  
Time Test Ended: 18:57:45  
Interval: **4272.00 ft (KB) To 4310.00 ft (KB) (TVD)**  
Total Depth: 4310.00 ft (KB) (TVD)  
Hole Diameter: 7.88 inches Hole Condition: Fair  
Test Type: Conventional Bottom Hole (Reset)  
Tester: Mike Roberts  
Unit No: 48  
Reference Elevations: 3057.00 ft (KB)  
3047.00 ft (CF)  
KB to GR/CF: 10.00 ft

### Serial #: 8646

Press@RunDepth: 79.97 psig @ ft (KB)  
Start Date: 2011.10.11 End Date: 2011.10.11  
Start Time: 10:57:15 End Time: 18:57:45  
Capacity: 8000.00 psig  
Last Calib.: 2011.10.11  
Time On Btm: 2011.10.11 @ 13:05:15  
Time Off Btm: 2011.10.11 @ 17:07:15

TEST COMMENT: IF: Built to 3 3/4" blow  
IS: Very weak surface blow  
FF: Built to 51/2" blow  
FS: Weak return blow



### PRESSURE SUMMARY

Time (Min.)	Pressure (psig)	Temp (deg F)	Annotation
0	2214.28	108.28	Initial Hydro-static
1	19.77	107.48	Open To Flow (1)
32	41.84	108.20	Shut-in(1)
91	1305.98	109.82	End Shut-in(1)
91	48.39	109.57	Open To Flow (2)
150	79.97	111.00	Shut-in(2)
241	1243.94	113.14	End Shut-in(2)
242	2106.32	116.20	Final Hydro-static

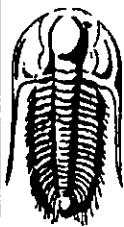
### Recovery

Length (ft)	Description	Volume (bbl)
91.00	mco 3% m 97% o	0.45
93.00	ocm 40% o 60% m	0.46

\* Recovery from multiple tests

### Gas Rates

Choke (inches)	Pressure (psig)	Gas Rate (Mcf/d)



**TRILOBITE  
TESTING, INC.**

## DRILL STEM TEST REPORT

**FLUID SUMMARY**

Wold Oil Properties

2-13-35 Logan KS

139 W 2nd. St STE 200  
Casper Wy. 82601

Sirvta #1-2

Job Ticket: 43215

DST#: 2

ATTN: Robert Hendrix

Test Start: 2011.10.11 @ 10:57:15

### Mud and Cushion Information

Mud Type: Gel Chem

Cushion Type:

Oil API:

31 deg API

Mud Weight: 9.00 lb/gal

Cushion Length:

ft

Water Salinity:

0 ppm

Viscosity: 55.00 sec/qt

Cushion Volume:

bbl

Water Loss: 7.20 in<sup>3</sup>

Gas Cushion Type:

Resistivity: 0.00 ohm.m

Gas Cushion Pressure:

psig

Salinity: 7500.00 ppm

Filter Cake: 2.00 inches

### Recovery Information

Recovery Table

Length ft	Description	Volume bbl
91.00	mco 3% <sup>m</sup> 97% <sup>o</sup>	0.448
93.00	ocm 40% <sup>o</sup> 60% <sup>m</sup>	0.457

Total Length: 184.00 ft      Total Volume: 0.905 bbl

Num Fluid Samples: 0

Num Gas Bombs: 0

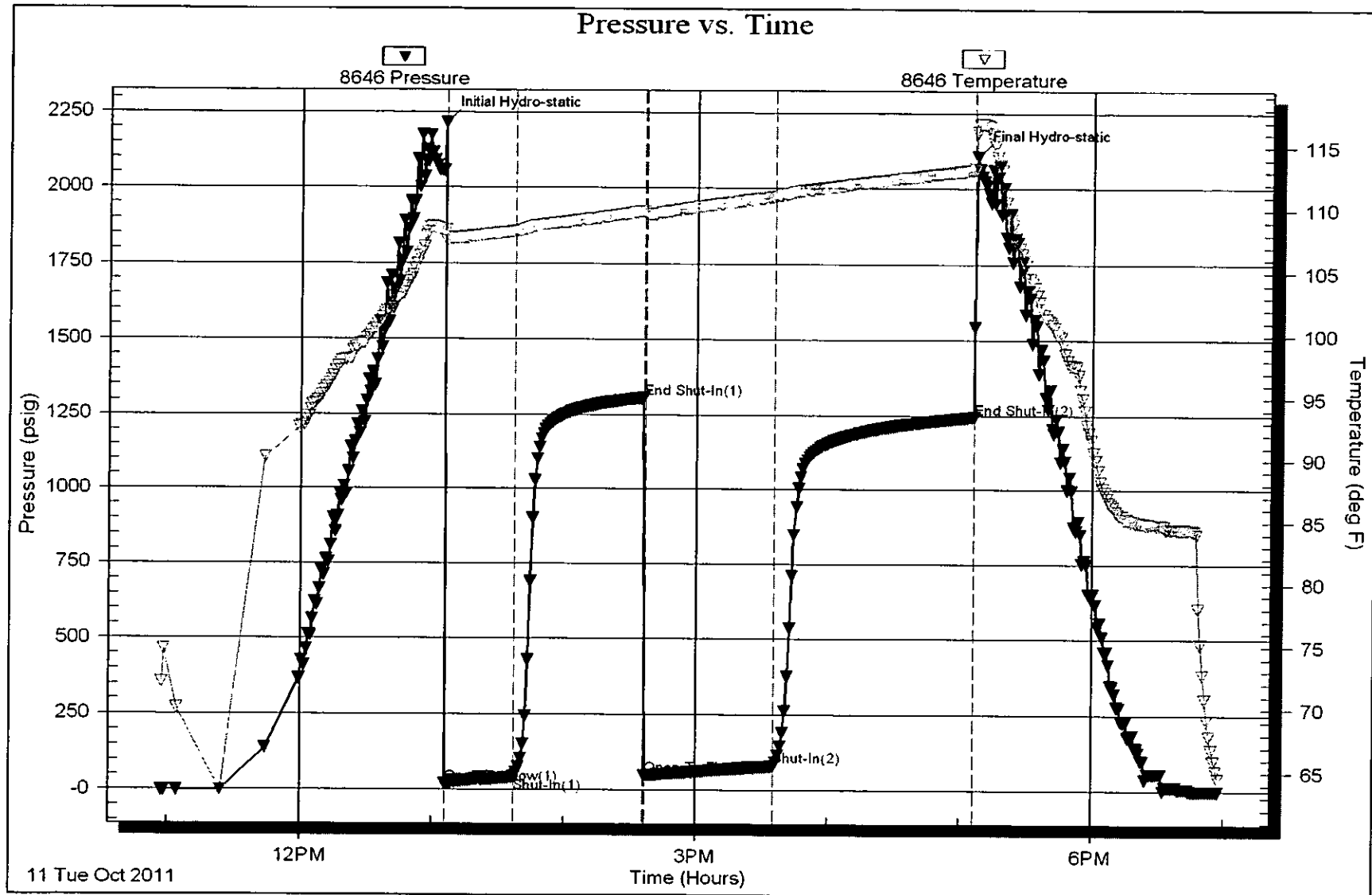
Serial #:

Laboratory Name:

Laboratory Location:

Recovery Comments: API= 32@70 corrected to 31 @60





Conservation Division  
Finney State Office Building  
130 S. Market, Rm. 207B  
Wichita, KS 67202-3802



Phone: 316-337-6200  
Fax: 316-337-6211  
<http://kcc.ks.gov/>

Mark Sievers, Chairman  
Ward Loyd, Commissioner  
Thomas E. Wright, Commissioner

Sam Brownback, Governor

February 17, 2012

Kevin Meenan  
Wold Oil Properties, Inc.  
139 W. 2ND ST., STE 200  
CASPER, WY 82601

Re: ACO1

Sec.-S-  
County, Kansas

Dear Production Department:

We are herewith requesting that the Well Completion Form ACO-1 and attached information for the subject well be held confidential for a period of two years.

Should you have any questions or need additional information regarding subject well, please contact our office.

Respectfully,  
Kevin Meenan

Date: 10/25/2011	Well: Siruta 1-2	AFE # KS343B	AFE \$
Days: 2	PBTD 4635	Present Swabbing	Daily Cost
Comp/Drlg/Tot		Operation Run CBL, Perf, Acidize Perfs	Total Cost:
	Supervisor: Pete Lauer	Phone: 303-378-9245	Rig: Murfin #544

**FLOW/PUMP TEST**

**GENERAL DATA**

Hours Prod.	Tubing Press.	Casing Press.	Choke 64th	Oil Bbl	Gas MCF	Water Bbl	TUBULARS	PUMPING EQUIPMENT
							Surf @	Unit
							Prod @	Plunger
							Liner @	Stroke
							Tubing @	SPM
							Nipple @	Rods
Line Pressure: Testing Co.							Zone/Perfs 4272' to 4278'	
Meter Run Data OD*							Zone/Perfs 4286' to 4314'	
Orifice							Static	Diff
							Temp	Coef

**LOAD RECOVERIES**

**PACKER / PLUG DETAIL**

**SWAB REPORT**

	Today	Total	%
BLWR			
BLOR			
BNW			
BNO			
Init BLWTBR			
Init BLOTBR			
BLWTBR			
BLOTBR			

	Make/Model	Set @	M# Tens/Comp	Initial FL	
Pkr #1		4237'		Ending FL	
#2				Recovery, Bbls	
Plug #1				Hrs. Swabbed	
#2				Final Entry Rate	
#3					
Nipple					
Nipple					
Nipple					

**DESCRIPTION OF DAILY ACTIVITIES**

Time		Hrs.	Description
Start	End		
7:00	9:00		RU Log Tech, Ran CBL from 4635' to 3200', Top of cmt 3710', Fair bond
	9:45		CSG swab fluid down to 2800'
			RIH Log Tech, Perf w/ 4" Hollow Expandable Carrier w/ 39 gram, 48 hole size
	11:00		Perforate from 4286' to 4314' & 4272' to 4278', RD Log Tech ALL Shots Fired, 4 Shots Per FT
	12:00		Trip in Hole w/ Arrow Set PKR, 130 jts 2-7/8" tbg, Set PKR @ 4237'
			Swabbing, 3 runs IFL 2700', FFL SN@4237', TRACE of OIL in Final swab run
	2:00		Release PKR, Lowered pkr to 4314'
			RU Swift services, spot acid across perfs, 250 gal. MCA 15% w/ additives
			LD 2 jts tbg and subs, Set PKR at 4237'
			Breakdown perfs 300 psi at 1/2 BPM, ISIP 300, 5 min 200, 15 min 200psi, Brought back 1/4 barrel water
			RD Swift services
	4:00		RU to swab
			Made 9 swab runs, IFL surface, FFL 4137', [ Brought back 1 bbl of 100% oil in last hour ]
			Release PKR, Let fluid Equilibrate, swab to make sure no acid behind PKR, brought back water and oil, Reset PKR
			Swabbed down to SN
	7:00		SDFN
NOTE: PBTD@4635', Top of Short JT. @ 4392', DV @ 2495'			

Date: 10/26/2011	Well: Siruta 1-2	AFE # KS343B	AFE \$
Days: 3	PBTD 4635	Present Swabbing	Daily Cost
Comp/Drlg/Tot		Operation Swabbing, 1500 gal acid job,	Total Cost:
	Supervisor: Pete Lauer	Phone: 303-378-9245	Rig: Murfin #544

**FLOW/PUMP TEST**

**GENERAL DATA**

Hours	Tubing	Casing	Choke	Oil	Gas	Water	TUBULARS	PUMPING EQUIPMENT		
Prod.	Press.	Press.	64th	Bbl	MCF	Bbl	Surf	Unit		
							Prod @	Plunger		
							Liner @	Stroke		
							Tubing @	SPM		
							Nipple @	Rods		
Line Pressure: Testing Co.							Zone/Perfs	4272' to 4278'		
Meter Run Data OD*							Zone/Perfs	4286' to 4314'		
Orifice							Static	Diff	Temp	Coef

**LOAD RECOVERIES**

	Today	Total	%
BLWR			
BLOR			
BNW			
BNO			
Init BLWTBR			
Init BLOTBR			
BLWTBR			
BLOTBR			

**PACKER / PLUG DETAIL**

	Make/Model	Set @	M# Tens/Comp
Pkr #1		4237'	
#2			
Plug #1			
#2			
#3			
Nipple			
Nipple			
Nipple			

**SWAB REPORT**

Initial FL	2900'
Ending FL	4237'
Recovery, Bbls	
Hrs. Swabbed	
Final Entry Rate	

**DESCRIPTION OF DAILY ACTIVITIES**

Time		Hrs.	Description
Start	End		
7:00	8:15		Swabbing, IFL 2900' Made 2 runs brought back 7.5 bbls 100% oil
	1:15		Making hourly runs, Waiting for ACID, Brought back 2.5 bbls oil in 5 hours
	2:00		RU Swift services, Pump 1500 gal 15% HCL acid w/ additives and flush w/ 26bbls H2O, Over Flush 1.5 bbl
			Max PSI 600 @ 2.5 BPM, Total bbls pumped 63.5
			ISIP 500, 5 min 400, 10 min 375, 15 min 325, 30 min 275, 1 hr 200. Opened & brought back 4 bbls H2O
	3:45		RD SWIFT services
	4:00		RU & SWAB ACID Treatment
	5:00		Made 5 swab runs, brought back 30 bbls H2O, Started cutting oil, Pulling from SN.
	5:30		Made 3 swab runs, brought back 3/4 bbl of Oil in 1 HOUR
	5:45		SDFN
			NOTE: PBTD@4635', Top of Short JT. @ 4392', DV @ 2495'

Date: 10/27/2011	Well: Siruta 1-2	AFE#	KS343B	AFE \$
Days: 4	PBTD 4635	Present	RDMO	Daily Cost
Comp/Drlg/Tot		Operation	Swabbing, Pull PKR, Run TBG	Total Cost:
	Supervisor: Pete Lauer	Phone:	303-378-9245	Rig: Murfin #544

FLOW/PUMP TEST

GENERAL DATA

Hours Prod.	Tubing Press.	Casing Press.	Choke 64th	Oil Bbl	Gas MCF	Water Bbl	TUBULARS		PUMPING EQUIPMENT	
							Surf	@	Unit	
							Prod	@	Plunger	
							Liner	@	Stroke	
							Tubing	@	SPM	
							Nipple	@	Rods	
Line Pressure:							Zone/Perfs		4272' to 4278'	
Testing Co.							Zone/Perfs		4286' to 4314'	
Meter Run Data	OD"		Orifice		Static		Diff	Temp	Coef	

LOAD RECOVERIES

	Today	Total	%
BLWR			
BLOR			
BNW			
BNO			
Init BLWTBR			
Init BLOTBR			
BLWTBR			
BLOTBR			

PACKER / PLUG DETAIL

	Make/Model	Set @	M# Tens/Comp	Initial FL	2800'
Pkr #1				Ending FL	4237'
#2				Recovery, Bbls	
Plug #1				Hrs. Swabbed	
#2				Final Entry Rate	
#3					
Nipple					
Nipple					
Nipple					

SWAB REPORT

DESCRIPTION OF DAILY ACTIVITIES

Time		Hrs.	Description
Start	End		
7:00	8:15		Swabbing, IFL 2800' Made 2 runs brought back 4 bbls 75% oil 25% water
	9:00		Made 2 runs, got out w/ 50' oil per run, 1/2 bbl
	9:15		LD Swab, Release pkr
	10:30		TOOH, LD PKR
	11:45		TIH w/ Seating Nipple @ 134 jts 2-7/8" J55 tbg Land Tbg @ 4356' KB
	12:15		NU TBG HEAD & SWI
	1:30		RDMO Murfin
			NOTE, 2 jts 2-7/8" tbg on ground & 3 jts 5-1/2" csg on location
			EST 30 1/2 bbls of mostly OIL in Tank, Murfin will haul to Wallace Oil Reclaiming in Oakley KS
			Webbs Rental TANK will be removed following oil haul
			NOTE; PBTD@4635', Top of Short JT. @ 4392', DV @ 2495'

**POGO PRODUCING COMPANY  
DAILY DRILLING REPORT**

Date:	10/5/2011	Well: Siruta #1-2	AFE #	1	AFE \$
Depth:		Proj TD: 5300	Present	Drilling @ 270'	Daily Cost:
Prog:		Formt:	Operation	Rig repair, Rig Up, Spud, Run Surface Pipe, CMT	Total Cost:
Days:	1	Supervisor:	Pete lauer	Phone: 303-378-9245	Rig: Murfin rig #14

**MUD DATA**

Mud Type:		Daily Mud Cost:	\$650	Cum Mud Cost:	\$650
Pit Vol, Bbls:		Hole Vol, Bbls:		Vendor:	
Wt:	Vis:	PV:	YP:	Gels:	API WL:
Sol.:	O/W:	ES:	Cl:	Ca:	LCM:
					HTHP
					pf/mf:

**DRILLING DATA**

Bit #	Size	Mfgr	Type	S/N	Jets	Out	Ftg	Hrs	ROP	RPM	WOB	IADC Grading	
BHA #	In @	Description										Length	Weight
Hookload, M#:		Torque Rds:		Drag		M# UP:		M#DN:		Max Allowable Pull, M#:			
Pump	Make	Model	Stk	Liner	SPM	GPM	Press	Deviation Surveys					
Data #1								Depth	Incl	Azim	TVD	E-W	N-S
Data #2								227'	3/4				
ECD:	AVDC:	HHP:	Kill PSI:										
Jet Vel:	AVDP:	Bit HP:	Kill SPM:										
BGG:	CG:	TG:	Vendor:										
Max:	@	FM:	Logger:										

**CASING DATA**

Size	Top	Depth	Wt	Gr	Thread	Shoe Test, ppg
8 5/8"		227'	23#			

**DESCRIPTION OF DAILY ACTIVITIES**

Time	Date Last BOP Test:	Date Last BOP Drill:	Tour:	Date Last PVT Check:	
7:00	12:00				
				Rig Repair	
12:00	4:15pm			Rig Up and Mix Mud	
4:15	4:45			Drill Rathole	
4:45	7:15pm			Drill Surface Hole w/ 12 1/4" bit to 227	
7:15	7:45			Circulate to condition hole	
7:45	8:00			Survey 3/4 degree out	
8:00	8:30pm			Trip out of hole w/ surface bit	
8:30	9:30			Run 5 jets 8-5/8" 23# CSG to 227.95 KB	
9:30	10:00pm			RU Allied cementers, Cement w/ 200 sks common cmt w/ 3% CC and 2% Gel, Displace w/ 13.5 bbls water, Cement at surface	
10:00	6:00am			Wait on Cement	
6:00	7:00am			Drill from 227' to 270'	
		Fuel Used Last 24 hrs., Gals:	Cumulative, Gals:	Cost, \$:	Cum Cost, \$:
Drlg Past 24Hrs:	Circulating:	Cut DL:	Cement:	Trip:	Cum Drlg Hrs:
Rig Service:	Rig Repair:	Survey:	Casing:	Other:	Cum Rig Repair:



**POGO PRODUCING COMPANY  
DAILY DRILLING REPORT**

Date:	10/7/2011	Well:	Siruta #1-2	AFE #	1	AFE \$	
Depth:		Proj TD:	5300	Present	Drilling @ 2754'	Daily Cost:	
Prog:		Formt:		Operation	Drill from 2754' to 3518'	Total Cost:	
Days:	3	Supervisor:	Pete lauer	Phone:	303-378-9245	Rig:	Murfin rig #14

**MUD DATA**

Mud Type:		Daily Mud Cost:	\$3,786	Cum Mud Cost:	\$9,312										
Pit Vol, Bbls:		Hole Vol, Bbls:		Vendor:	Mud Engineer: Dave Lnes										
Wt:	8.6	Vis:	124	PV:	26	YP:	35	Gels:	23/57	API WL:		HHP:		pf/mf:	
Sol.:	2.2	O/W:		ES:		Cl:	3900	Ca:	10	LCM:	2.0	pH:	11.5		2.1/4.8

**DRILLING DATA**

Bit #	Size	Mfgr	Type	S/N	Jets	Out	Ftg	Hrs	ROP	RPM	WOB	IADC Grading	
2	7 7/8"	HTC	DP506F	7136011	14x14x15								
3	7 7/8"	HTC	6x225	5200340	14x14x15								
BHA #	In @	Description										Length	Weight
2												529.56	

Hookload, M#:		Torque Rds:		Drag	M# UP:	M#DN:	Max Allowable Pull, M#:						
Pump	Make	Model	Stk	Liner	SPM	GPM	Press	Deviation Surveys					
Data,#1								Depth	Incl	Azim	TVD	E-W	N-S
Data,#2								227'	3/4				
ECD	AVDC:	HHP:		Kill PSI:				1203'	1				
Jet Vel:	AVDP:	Bit HP:		Kill SPM				2218'	1				
BGG:	CG:	TG:		Vendor:				3518'	3/4				
Max:	@	FM:		Logger:									

**CASING DATA**

Size	Top	Depth	Wt	Gr	Thread	Shoe Test, ppg
8 5/8"		227'	23#			

**DESCRIPTION OF DAILY ACTIVITIES**

Time	Date Last BOP Test:	Date Last BOP Drill:	Tour:	Date Last PVT Check:	
7am	8:15am	Drill from 2754' to 2884'			
8:15	8:30	Rig Service			
8:30	12:15pm	Drill from 2884' to 3155'			
12:15	2:45	Lost circulation @ 3155', Pulled 5 stands, Broke circulation, Ran 5 stands, Displace, Lost aprx. 100 bbls			
2:45	4:45	Drill from 3155' to 3296'			
4:45	5:00	Rig Service			
5:00	7:30	Drill from 3296' to 3518'			
7:30	8:00	Circulate to Condition Hole			
8:00	8:15	Ran Survey, 3/4 degree out			
8:15	11:00	Trip Out Of Hole, LD PDC bit, Pulling Hard			
11:00	11:15	Trip In Hole w/ 7 7/8" Button Bit			
11:15	2:00am	Shut Down Due to Heavy Rain & Lightning			
2:00	5:30	Pump Off Water And Mix Mud			
5:30	7:00	Trip In Hole, Reaming & Circulating			
		Note; Very Heavy Rain, Wind and Lightning, Tornado warning			
		Location Very Muddy, Windy, Still Raining			
		Fuel Used Last 24 hrs., Gals:	Cumulative, Gals:	Cost, \$:	
Drig Past 24Hrs:	Circulating:	Cut DL:	Cement:	Trip:	Cum Drig Hrs:
Rig Service:	Rig Repair:	Survey:	Casing:	Other:	Cum Rig Repair:



**POGO PRODUCING COMPANY  
DAILY DRILLING REPORT**

Date:	10/8/2011	Well:	Siruta #1-2	AFE #	1	AFE \$	
Depth:		Proj ID:	5300	Present	DST Lacometon formation		Daily Cost:
Prog:		Formt:		Operation	Drill from 3518' to 3793'		Total Cost:
Days:	4	Supervisor:	Pete lauer	Phone:	303-378-9245		Rig:
							Murfin rig #14

**MUD DATA**

Mud Type:		Daily Mud Cost:	\$2,286	Cum Mud Cost:	\$11,578
Pit Vol, Bbls:		Hole Vol, Bbls:		Vendor:	
Wt:	8.7	Vis:	47	PV:	14
Sol.:	2.9	O/W:		ES:	
				Cl:	5900
				Ca:	10
				LCM:	4.0
				pH:	10.0
				pf/mf:	.7/3.4

**DRILLING DATA**

Bit #	Size	Mfgr	Type	S/N	Jets	Out	Ftg	Hrs	ROP	RPM	WOB	IADC Grading
2	7 7/8"	HTC	DP506F	7136011	14x14x15							
3	7 7/8"	HTC	6x225	3200340	14x14x15							

BHA #	In @	Description	Length	Weight
2			529.56	

Hookload, M#:		Torque Rds:		Drag	M# UP:	M#DN:	Max Allowable Pull, M#:
Pump	Make	Model	Stk	Liner	SPM	GPM	Press
Data,#1							
Data,#2							
ECD	AVDC:	HHP:	Kill PSI:	1203'	1		
Jet Vel:	AVDP:	Bit HP:	Kill SPM:	2218'	1		
BGG:	CG:	TG:	Vendor:	3518'	3/4		
Max:	@	FM:	Logger:				

**CASING DATA**

Size	Top	Depth	Wt	Gr	Thread	Shoe Test, ppg
8 5/8"		227'	23#			

**DESCRIPTION OF DAILY ACTIVITIES**

Time	Date Last BOP Test:	Date Last BOP Drill:	Tour:	Date Last PVT Check:	
7am	8:30	Trip In Hole, Reaming to 3518'			
8:30	3:45pm	Drill from 3518' to 3676'			
3:45	4:00	Rig Service			
4:00	8:30	Drill from 3676' to 3793'			
8:30	9:30	Circulate for samples			
9:30	11:15	Short Trip			
11:15	12:45am	Circulate to Condition Hole			
12:45	2:30	Trip Out of Hole			
2:30	3:00	Make Up Test Tool			
3:00	4:45	Trip In Hole w/ Test Tools			
4:45	5:15	Open test tool for 30 min, Initial Flow, Slight Blow, Top of Bucket			
5:15	6:15	Shut in Test Tool, 60 min. No Flow			
6:15	6:45am	Open test tool for 30 min, Final Flow, Slight Blow, Top of Bucket			
6:45	7:00	Final shut In 60 min. No Flow			
		Note; DST #1 Lacometon formation , Top@ 3772 Little Show w/ Free Oil in Samples			
		Location Very Muddy			
		Fuel Used Last 24 hrs., Gals:	Cumulative, Gals:	Cost, \$:	
				Cum Cost, \$:	
Drig Past 24Hrs:	Circulating:	Cut DL:	Cement:	Trip:	Cum Drig Hrs:
Rig Service:	Rig Repair:	Survey:	Casing:	Other:	Cum Rig Repair:

**POGO PRODUCING COMPANY  
DAILY DRILLING REPORT**

Date:	10/10/2011	Well:	Siruta #1-2	AFE #	1	AFE \$	
Depth:		Proj ID:	5300	Present	Trip out of hole for DST #2		Daily Cost:
Prog:		Formt:		Operation	Drill from 4070' to 4310'		Total Cost:
Days:	6	Supervisor:	Pete lauer	Phone:	303-378-9245		Rig: Murfin rig #14

**MUD DATA**

Mud Type:				Daily Mud Cost:	\$3,493	Cum Mud Cost:	\$15,305								
Pit Vol, Bbls:	Hole Vol, Bbls:			Vendor:	Mud Engineer: Dave Lnes										
Wt:	9.0	Vis:	55	PV:	17	YP:	18	Gels:	16/36	API WL:		HTHP:		p/mf:	
Sol.:	5.0	O/W:		ES:		Cl:	7500	Ca:	10	LCM:	2.0	pH:	10.5	1.1/2.7	

**DRILLING DATA**

Bit #	Size	Mfgr	Type	S/N	Jets	Out	Ftg	Hrs	ROP	RPM	WOB	IADC Grading
2	7 7/8"	HTC	DP506F	7136011	14x14x15							
3	7 7/8"	HTC	6x225	5200340	14x14x15							

BHA #	In @	Description	Length	Weight
2			529.56	

Hookload, M#:		Torque Rds:		Drag	M# UP:		M#DN:		Max Allowable Pull, M#:				
Pump	Make	Model	Stk	Liner	SPM	GPM	Press	Deviation Surveys					
Data,#1								Depth	Incl	Azim	TVD	E-W	N-S
Data,#2								227'	3/4				
ECD	AVDC:		HHP:		Kill PSI:			1203'	1				
Jet Vel:	AVDP:		Bit HP:		Kill SPM:			2218'	1				
BGG:	CG:		TG:		Vendor:			3518'	3/4				
Max:	@		FM:		Logger:								

**CASING DATA**

Size	Top	Depth	Wt	Gr	Thread	Shoe Test, ppg
8 5/8"		227'	23#			

**DESCRIPTION OF DAILY ACTIVITIES**

Time	Date Last BOP Test:	Date Last BOP Drill:	Tour:	Date Last PVT Check:		
7am	7:30	Drill from 4070' to 4080'				
7:30	8:30	Circulate for samples				
8:30	10:30	Drill from 4080' to 4115'				
10:30	11:45	Circulate for samples				
11:45	12:45	Drill from 4115' to 4137'				
12:45	2:00pm	Circulate for samples				
2:00	4:00	Drill from 4137' to 4176'				
4:00	5:15	Circulate for samples				
5:15	11:45	Drill from 4176' to 4300'				
11:45	1:00am	Circulate for samples				
1:00	1:15	Rig Service				
1:15	1:45	Drill from 4300' to 4310'				
1:45	2:45	Circulate for samples				
2:45	7:00am	Tripping out, VERY TIGHT, Short Trip				
		Geo Tops, Muncie Creek 4059', Stark 4140, Altomont 4284'				
		Note; DST #2				
		Fuel Used Last 24 hrs., Gals:	Cumulative, Gals:	Cost, \$:	Cum Cost, \$:	
Drig Past 24Hrs:		Circulating:	Cut DL:	Cement:	Trip:	Cum Drig Hrs:
Rig Service:		Rig Repair:	Survey:	Casing:	Other:	Cum Rig Repair:

**POGO PRODUCING COMPANY  
DAILY DRILLING REPORT**

Date:	10/11/2011	Well:	Siruta #1-2	AFE #	1	AFE \$	
Depth:		Proj ID:	4750	Present	DST#3	Daily Cost:	
Prog:		Form:		Operation	DST #2, Drill from 4318' to 4350', DST #3	Total Cost:	
Days:	7	Supervisor:	Pete lauer	Phone:	303-378-9245	Rig:	Murfin rig #14

**MUD DATA**

Mud Type:		Daily Mud Cost:	\$0	Cum Mud Cost:	\$15,305
Pit Vol, Bbls:		Hole Vol, Bbls:		Vendor:	
Wt:	9.1	Vis:	58	PV:	18
Sol.:	5.7	O/W:		ES:	
				CI:	8900
				Ca:	10
				LCM:	1.0
				pH:	10.5
				p/mf:	1.2/3.1

**DRILLING DATA**

Bit #	Size	Mfgr	Type	S/N	Jets	Out	Ftg	Hrs	ROP	RPM	WOB	IADC Grading	
2	7 7/8"	HTC	DP506F	7136011	14x14x15								
3	7 7/8"	HTC	6x225	5200340	14x14x15								
BHA #	In @	Description										Length	Weight
2												529.56	

Hookload, M#:		Torque Rds:		Drag	M# UP:	M#DN:	Max Allowable Pull, M#:
Pump	Make	Model	Stk	Liner	SPM	GPM	Press
Data #1							
Data #2							
ECD	AVDC	HHP			Kill PSI:	1203'	1
Jet Vel	AVDP	Bit HP:			Bit SPM	2218'	1
BGG:	CG:	TG:			Vendor:	3518'	3/4
Max:	@	FM:			Logger:		

**CASING DATA**

Size	Top	Depth	Wt	Gr	Thread	Shoe Test, ppg
8 5/8"		227'	23#			

**DESCRIPTION OF DAILY ACTIVITIES**

Time	Date Last BOP Test:	Date Last BOP Drill:	Tour:	Date Last PVT Check:
7am	8:30	Finish Short Trip		
8:30	9:30	Circulate to Condition Hole		
9:30	11:00	Trip out of Hole		
11:00	11:30	Make Up test Tool		
11:30	1:00pm	T rip in Hole w/ DST #2		
1:00	5:00	DST #2 Test from 4272' to 4310', IF 30 min. built to 3-3/4" blow, IS 60 min. Very weak surface blow, FF 60 min. built to 5-1/2" blow, FS 90 min weak return blow		
5:00	7:00	TOOH w/ DST #2, Total Fluid recovered, 184', 1st 91' 97% oil, 3% mud, 2nd 93' 40% oil, 60% mud		
7:00	7:30	Break down test tool		
7:30	9:30	Trip in Hole		
9:30	10:30	Circulate to Condition Hole		
10:30	1:15am	Drill from 4318' to 4350'		
1:15	2:30	Circulate for samples		
2:30	4:15	TOOH		
4:15	4:45	Make Up test Tool		
4:45	6:15	TIH w/ DST #3		
6:15	7:00	DST #3		
		Geo Tops, Altomont C 4322'		
		Fuel Used Last 24 hrs., Gals:		
		Cumulative, Gals:		Cost, \$:
		Cum Cost, \$:		
Drig Past 24Hrs:	Circulating:	Cut DL:	Cement:	Trip:
Rig Service:	Rig Repair:	Survey:	Casing:	Other:
				Cum Drig Hrs:
				Cum Rig Repair:



**POGO PRODUCING COMPANY  
DAILY DRILLING REPORT**

Date:	10/13/2011	Well:	Siruta #1-2	AFE #	1	AFE \$	
Depth:		Proj TD:	4708'	Present	Drilling	Daily Cost:	
Prog:		Formt:		Operation	Drill from 4575' to 4750'	Total Cost:	
Days:	9	Supervisor:	Pete lauer/Aaron Otteman	Phone:	303-378-9245	Rig:	Murfin rig #14

**MUD DATA**

Mud Type:				Daily Mud Cost:	\$3,105	Cum Mud Cost:	\$18,410
Pit Vol, Bbls:	Hole Vol, Bbls:			Vendor:	Mud Engineer: Dave Lines		
Wt:	9.1	Vis:	57	PV:	18	YP:	19
Sol:	7.1	O/W:		ES:		CI:	8800
Gels:	15/40	API WL:		Ca:	10	LCM:	2.0
HHP:		pH:	11.0	p/mf:	1.2/2.5		

**DRILLING DATA**

Bit #	Size	Mfgr	Type	S/N	Jets	Out	Ftg	Hrs	ROP	RPM	WOB	IADC Grading
2	7 7/8"	HTC	DP506F	7136011	14x14x15							
3	7 7/8"	HTC	6x225	5200340	14x14x15							

BHA #	In @	Description	Length	Weight
2			529.56	

Hookload, M#:	Torque Rds:			Drag	M# UP:	M#DN:	Max Allowable Pull, M#:						
Pump	Make	Model	Stk	Liner	SPM	GPM	Press	Deviation Surveys					
Data #1								Depth	Incl	Azim	TVD	E-W	N-S
Data #2								227'	3/4				
ECD	AVDC:	HHP:	Kill PSI:				1203'		1				
Jet Vel:	AVDP:	Bit HP:	Kill SPM:				2218'		1				
BGG:	CG:	TG:	Vendor:				3518'		3/4				
Max:	@	FM:	Logger:				4708'		1-1/4				

**CASING DATA**

Size	Top	Depth	Wt	Gr	Thread	Shoe Test, ppg
8 5/8"		227'	23#			

**DESCRIPTION OF DAILY ACTIVITIES**

Time	Date Last BOP Test:	Date Last BOP Drill:	Tour:	Date Last PVT Check:	
7am	9:00	Drill from 4575' to 4628'			
	9:00	9:15	Rig Service		
	9:15	2:15PM	Drill from 4628' to 4,708' (TD)		
	2:15	3:15	circulate for trip		
	3:15	4:30	short trip (15 stands)		
	4:30	6:00	circulate to condition hole		
	6:00	6:15	survey		
	6:15	2AM	Rig Up loggers, log, rig down loggers		
	2:00	4:15	wait on orders		
	4:15	7:00	trip in hole to condition hole for running casing and lay down drill pipe		
		Logged tops: Anhydrite - 2462', Topeka - 3627', Heebner - 3853', Lansing - 3902', Muncie Creek - 4062', Stark - 4147', Altamont - 4282', Pawnee - 4358', Ft. Scott - 4399 Johnson - 4486, Mississippian - 4635', Logger's TD - 4709'			
		Fuel Used Last 24 hrs., Gals:	Cumulative, Gals:	Cost, \$:	
		Cum Cost, \$:			
Drlg Past 24Hrs:	Circulating:	Cut DL:	Cement:	Trip:	Cum Drlg Hrs:
Rig Service:	Rig Repair:	Survey:	Casing:	Other:	Cum Rig Repair:



**POGO PRODUCING COMPANY  
DAILY DRILLING REPORT**

Date:	10/14/2011	Well:	Siruta #1-2	AFE #	1	AFE \$		
Depth:		Proj ID:	4708	Present	Rigging Down			Daily Cost:
Prog:		Formt:		Operation	Run Casing, cement, and rig down			Total Cost:
Days:	10	Supervisor:	Pete lauer/Aaron Otteman	Phone:	303-378-9245			Rig:

**MUD DATA**

Mud Type:				Daily Mud Cost:	\$3,105	Cum Mud Cost:	\$18,410
Pit Vol, Bbls:	Hole Vol, Bbls:			Vendor:	Mud Engineer: Dave Lines		
Wt:	9.1	Vis:	57	PV:	18	YP:	19
Sol:	7.1	O/W:		ES:		Cl:	8800
				Ca:	10	LCM:	2.0
				pH:	11.0	pl/mf:	1.2/2.5

**DRILLING DATA**

Bit #	Size	Mfgr	Type	S/N	Jets	Out	Ftg	Hrs	ROP	RPM	WOB	IADC Grading
2	7 7/8"	HTC	DP506F	7136011	14x14x15							
3	7 7/8"	HTC	6x225	5200340	14x14x15							

BHA #	In @	Description	Length	Weight
2			529.56	

Hookload, M#:	Torque Rds:		Drag	M# UP:	M#DN:	Max Allowable Pull, M#:	
Pump	Make	Model	Sik	Liner	SPM	GPM	Press
Data,#1							
Data,#2							
ECD:	AVDC:	HHP:	Kill PSI:		1203'	1	
Jet Vel:	AVDP:	Bit HP:	Kill SPM:		2218'	1	
BGG:	CG:	TG:	Vendor:	3518'	3/4		
Max:	@	FM:	Logger:	4708'	1-1/4		

**CASING DATA**

Size	Top	Depth	Wt	Gr	Thread	Shoe Test, ppg
8 5/8"		227'	23#			
5 1/2"		4709'	15.5#			

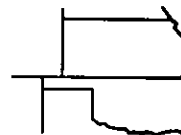
**DESCRIPTION OF DAILY ACTIVITIES**

Time	Date Last BOP Test:	Date Last BOP Drill:	Tour:	Date Last PVT Check:	
7am	8:30	circulate to condition hole			
8:30	1:30PM	Laydown drillpipe, drill collars and unload casing			
1:30	2:00	Nipple Down			
2:00	2:30	Rig up casing crew			
2:30	4:30	Run 112 jts 15.5# 5-1/2" casing			
4:30	5:30	circulate for cement and rig down casing crew			
5:30	6:15	pump 1st cement stage: 130 sacks ASC with 10% salt, 2% gel, 5nd #/sack gilsonite (Yield 1.57; Weight 14.5#)			
6:15	8:30	Circulate to pump 2nd cement stage through DV tool			
8:30	9:30	pump 2nd cement stage: 375 sacks Lite with 94#Flo-Seal (Yield 1.98; Weight 12.2#); ~50 of 375 sks for mousehole/rat			
9:30	1:30AM	set slips and jet pits			
	1:30AM	RIG RELEASED			
		Casing Notes: short marker joint (21.15') is 8th joint up from bottom. DV tool is set at 2,497' (MD ref. KB). Centralizers are on jts. 1, 4, 7, 11, 14, 17, 20, and 54 (off bottom).			
		Fuel Used Last 24 hrs., Gals:	Cumulative, Gals:	Cost, \$:	
Drig Past 24Hrs:	Circulating:	Cut DL:	Cement:	Trip:	Cum Drig Hrs:
Rig Service:	Rig Repair:	Survey:	Casing:	Other:	Cum Rig Repair:



**Pro-Stake LLC**  
Oil Field & Construction Site Staking

P.O. Box 2324  
Garden City, Kansas 67846  
Office/Fax: (620) 276-6159  
Cell: (620) 272-1499



**a081611-n**  
PLAT NO.

**9514**  
INVOICE NO.

**Wold Oil Properties, Inc.**

OPERATOR

**Logan County, KS**

COUNTY

**2 13s 35w**  
Sec. Twp. Rng.

**Siruta #1-2**

LEASE NAME

**1187' FSL - 1286' FEL**

LOCATION SPOT

SCALE: N/A

DATE STAKED: Aug. 10<sup>th</sup>, 2011

MEASURED BY: Ben R.

DRAWN BY: Luke R.

AUTHORIZED BY: Ken D.

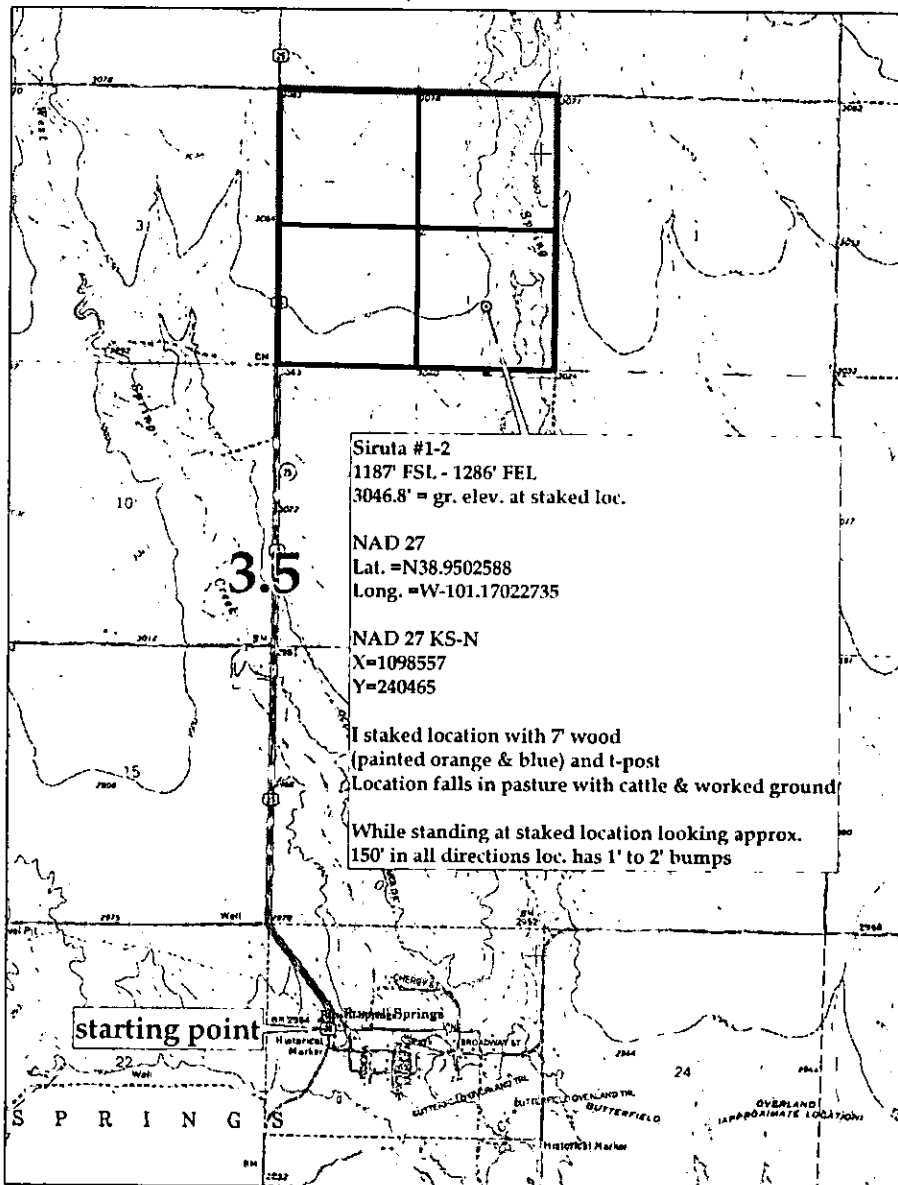
GR. ELEVATION: **3046.8'**

**Directions:** From the West side of Russell Springs, Ks at the intersection of Hwy 25 & Vine St - Now go 3.5 mile NW & North on Hwy 25/260 Rd to the NW corner of section of 2-13-35w - Now go 1 mile East on Seneca Rd - Now go 1 mile South on 270 Rd to ingress stake West into - Now go 0.2 mile West on trail to ingress stake North into - Now go 0.2 mile North on trail into staked location.

**Final ingress must be verified with land owner or Operator.**



*This drawing does not constitute a monumented survey or a land survey plat. This drawing is for construction purposes only.*





Conservation Division  
Finney State Office Building  
130 S. Market, Rm. 2078  
Wichita, KS 67202-3802



Phone: 316-337-6200  
Fax: 316-337-6211  
<http://kcc.ks.gov/>

Mark Sievers, Chairman  
Ward Loyd, Commissioner  
Thomas E. Wright, Commissioner

Sam Brownback, Governor

February 21, 2012

Kevin Meenan  
Wold Oil Properties, Inc.  
139 W. 2ND ST., STE 200  
CASPER, WY 82601

Re: ACO-1  
API 15-109-21041-00-00  
Siruta 1-2  
SE/4 Sec.02-13S-35W  
Logan County, Kansas

Dear Kevin Meenan:

K.A.R. 82-3-107 provides for all completion information to be filed within 120 days of the spud date. Subsection(e)(2) of that regulation states "All rights to confidentiality shall be lost if the filings are not timely."

The above referenced well was spudded on 10/05/2011 and the ACO-1 was received on February 20, 2012 (not within the 120 days timely requirement).

Therefore, your request for confidential treatment of data contained within the ACO-1 filing cannot be granted at this time.

If you should have any questions, please do not hesitate to contact me at (316)337-6200.

Sincerely,

Production Department