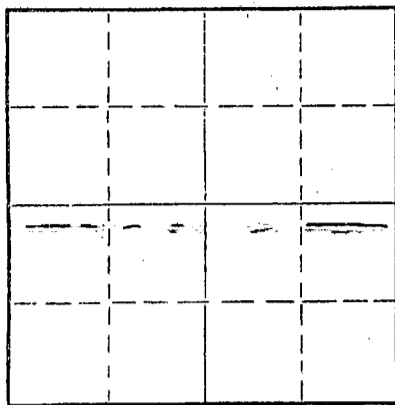


Give All Information Completely
Make Required Affidavit
Mail or Deliver Report to:
Conservation Division
State Corporation Commission
212 No. Market
Wichita, Kansas

WELL PLUGGING RECORD

15-169-00591-00-00

NORTH



Locate well correctly on above Section Plat

Saline County, Sec. 20 Twp. 16 Rge. 3 W (E) (W)
Location as "NE/CNW/SW" or footage from lines. C SW NW
Lease Owner Fell & Wolf Oil Co.
Lease Name Knut E. Holm Well No. 3
Office Address Bx 7447 Tulsa, Oklahoma
Character of Well (completed as Oil, Gas or Dry Hole) oil
Date well completed 5-9 1953
Application for plugging filed Nov 1967
Application for plugging approved Nov 1967
Plugging commenced Nov 10 1967
Plugging completed Nov 11 1967
Reason for abandonment of well or producing formation

If a producing well is abandoned, date of last production 19
Was permission obtained from the Conservation Division or its agents before plugging was commenced? Yes

Name of Conservation Agent who supervised plugging of this well Gilbert Toman
Producing formation Depth to top Bottom Total Depth of Well 3446' Feet
Show depth and thickness of all water, oil and gas formations.

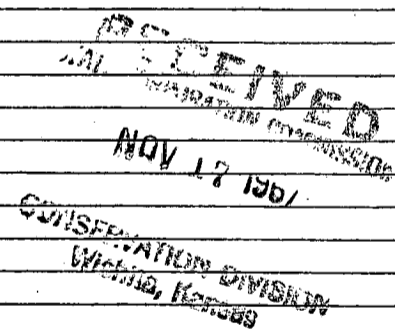
OIL, GAS OR WATER RECORDS

CASING RECORD

FORMATION	CONTENT	FROM	TO	SIZE	PUT IN	PULLED OUT
				4 1/2"		2,440'

Describe in detail the manner in which the well was plugged, indicating where the mud fluid was placed and the method or methods used in introducing it into the hole. If cement or other plugs were used, state the character of same and depth placed, from feet to feet for each plug set.

Plugged off bottom of hole with sand. Sand from 3446' to 3430'. Dumped 3 sx of cement. Mudded hole to 260'. Made 10' of rock bridge. Dumped 20 sx of cement. Mudded hole to 40'. Made 10' of rock bridge. Dumped 10 sx of cement, filling to the bottom of the cellar.



(If additional description is necessary, use BACK of this sheet)

Name of Plugging Contractor Art Lamb Casing Pulling Co.
Address 2809 King St. Hutchinson, Kansas

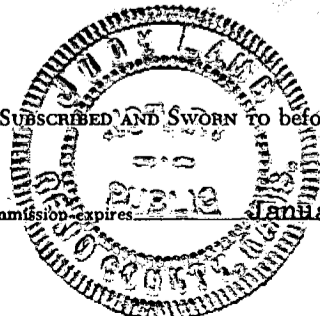
STATE OF Kansas, COUNTY OF Reno, ss.
Art Lamb (employee of owner) or (owner or operator) of the above-described well, being first duly sworn on oath, says: That I have knowledge of the facts, statements, and matters herein contained and the log of the above-described well as filed and that the same are true and correct. So help me God.

(Signature) *Art Lamb*
2809 King St. Hutchinson, Kansas
(Address)

SUBSCRIBED AND SWORN to before me this 12 th day of November, 19 67

My commission expires January 5, 1970

Notary Public.



WELL LOG BUREAU - KANSAS GEOLOGICAL SOCIETY
503 East Murdock, Wichita, Kansas

15-169-00591-00-00

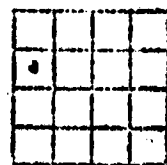
COPY

Company: THE ATLANTIC REFINING CO.
Farm: Knut E Holm No. 3

SEC. 20 T. 16 R. 3W
C SW NW

Total Depth. 3446
Conn. 4-24-53 Comp. 5-9-53
Shot or Treated Acid: 2000 gals.
Contractor: Keating Drilling Co.
Landed. 7-18-53

County Saline
KANSAS



Elevation. 1379 DF

Production. 37 BO

CASING:

8 5/8 set at 381' w/ 300 sx cement
4 1/2 set at 3440' w/ 200 sx cement

Figures indicate Bottom of Formations.

surface clay & sand	40
shale	140
sand & shale	200
shale	230
shale & sand	320
shale & shells	381
lime	425
broken lime	585
lime	618
shale & shells	725
lime	935
shale	955
lime	970
shale	975
broken lime	985
shale	1085
salt	1165
lime	1175
shale & shells	1440
broken lime	1585
shale & shells	1730
lime	1750
shale & shells	1785
shale	1800
lime	2130
shale & shells	2305
shale & lime	2490
lime	2528
shale	2558
lime & shale	2590
broken lime	2775
lime & shale	2900
shale	2994
lime	2996
broken lime	3056
lime	3204
shale	3440
lime, shale & dolomite	3446
Total Depth	

SCOUT TOPS:

Brown lime	2230
Lansing	2301
Burgess	2951
Mississippi	2955
Kinderhook	3214
Meisener	3405
Maquoketa shale	3409
Maquoketa dolomite	3443

Producing from Maquoketa dolomite
3440-3446

RECEIVED
STATE CORPORATION COMMISSION

AUG 30 1967

CONSERVATION DIVISION
Wichita, Kansas