

STATE CORPORATION COMMISSION OF KANSAS  
OIL & GAS CONSERVATION DIVISION

WELL COMPLETION OR RECOMPLETION FORM  
ACO-1 WELL HISTORY

DESCRIPTION OF WELL AND LEASE

Operator: License # 6009  
Name Double Eagle Exploration, Inc.  
Address 460 Century Plaza  
City/State/Zip Wichita, Kansas 67202

Purchaser Inland Crude

Operator Contact Person Jim Robinson  
Phone 316-267-3316

Contractor: License # 5146  
Name Rains & Williamson Oil Co.

Wellsite Geologist Harlan B. Dixon  
Phone 316-262-3928

Designate Type of Completion  
 New Well  Re-Entry  Workover  
 Oil  SWD  Temp Abd  
 Gas  Inj  Delayed Comp.  
 Dry  Other (Core, Water Supply etc.)

If OWWO: old well info as follows:  
Operator  
Well Name  
Comp. Date Old Total Depth

WELL HISTORY

Drilling Method:  
 Mud Rotary  Air Rotary  Cable  
12-11-87 12-21-87 1-14-88  
Spud Date Date Reached TD Completion Date  
4507 4504  
Total Depth PBTD

Amount of Surface Pipe Set and Cemented at 387 feet  
Multiple Stage Cementing Collar Used?  Yes  No  
If yes, show depth set feet  
If alternate 2 completion, cement circulated from 2000 feet depth to 450 w/ 475 SX cmt  
7-5-88

API NO. 15-135-23,197  
County Ness  
100 east of  
NW SW NW Sec 2 Twp 16S Rge 25  East  West

3630 Ft North from Southeast Corner of Section  
4850 Ft West from Southeast Corner of Section  
(Note: Locate well in section plat below)

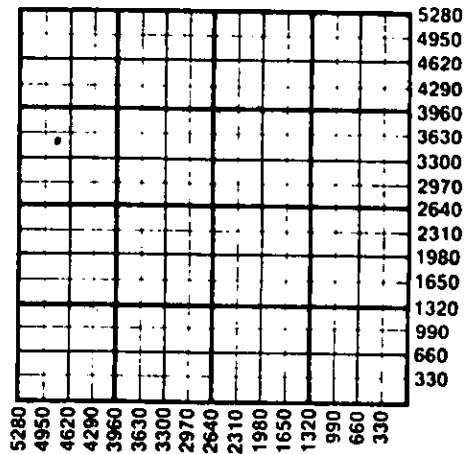
Lease Name McNinch B Well # 2

Field Name McNinch

Producing Formation Mississippi Dol.

Elevation: Ground 2546 KB 2551

Section Plat



WATER SUPPLY INFORMATION

Disposition of Produced Water:  Disposal  Repressuring  
Docket # Walker's Flax SWD

Questions on this portion of the ACO-1 call:  
Water Resources Board (913) 296-3717

Source of Water:  
Division of Water Resources Permit #  
 Groundwater Ft North from Southeast Corner (Well) Ft West from Southeast Corner of Sec Twp Rge  East  West  
 Surface Water Ft North from Southeast Corner (Stream, pond etc) Ft West from Southeast Corner Sec Twp Rge  East  West  
 Other (explain) (purchased from city, R.W.D. #)

INSTRUCTIONS: This form shall be completed in duplicate and filed with the Kansas Corporation Commission, 200 Colorado Derby Building, Wichita, Kansas 67202, within 90 days after completion or recompletion of any well. Rule 82-3-130 and 82-3-107 apply. Information on side two of this form will be held confidential for a period of 12 months if requested in writing and submitted with the form. See rule 82-3-107 for confidentiality in excess of 12 months. One copy of all wireline logs and drillers time log shall be attached with this form. Submit CP-4 form with all plugged wells. Submit CP-111 form with all temporarily abandoned wells.

All requirements of the statutes, rules and regulations promulgated to regulate the oil and gas industry have been fully complied with and the statements herein are complete and correct to the best of my knowledge.

Signature Jim Robinson  
Title President Date 1-25-88

Subscribed and sworn to before me this 25th day of January 1988  
Notary Public [Signature] My Appt. Exp. 2-28-92  
Date Commission Expires January 28, 1992

K.C.C. OFFICE USE ONLY  
F  Letter of Confidentiality Attached  
C  Wireline Log Received  
C  Drillers Timelog Received  
Distribution  
 KCC  SWD/Rep  NGPA  
 KGS  Plug  Other (Specify)  
23 1988  
26-88

Sec. 2 Twp. 16 Rge. 25 W

SIDE TWO

Operator Name ..... Double Eagle Exploration ..... Lease Name..... McNinch B. .... Well #..... 2.....

Sec..... 2 ..... Twp..... 16S ..... Rge..... 25 .....  East  
 West ..... County..... Ness .....

WELL LOG

INSTRUCTIONS: Show important tops and base of formations penetrated. Detail all cores. Report all drill stem tests giving interval tested, time tool open and closed, flowing and shut-in pressures, whether shut-in pressure reached static level, hydrostatic pressures, bottom hole temperature, fluid recovery, and flow rates if gas to surface during test. Attach extra sheet if more space is needed. Attach copy of log.

Drill Stem Tests Taken  Yes  No  
 Samples Sent to Geological Survey  Yes  No  
 Cores Taken  Yes  No

Formation Description  
 Log  Sample

Name Top Bottom

Completion report attached.

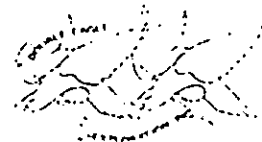
Geological report attached, also Great Guns Log.

CASING RECORD <input type="checkbox"/> New <input type="checkbox"/> Used							
Report all strings set-conductor, surface, intermediate, production, etc.							
Purpose of String	Size Hole Drilled	Size Casing Set (in O.D.)	Weight Lbs/Ft.	Setting Depth	Type of Cement	#Sacks Used	Type and Percent Additives
Surface	12 1/4	8 5/8	23	387.50	60-40 Poz	225	2% Gel 3% cc
Production	7 7/8	4 1/2	10.5	4507 2000	60-40 Poz Light	150 475	18% Salt
PERFORATION RECORD				Acid, Fracture, Shot, Cement Squeeze Record			
Shots Per Foot	Specify Footage of Each Interval Perforated			(Amount and Kind of Material Used)		Depth	
3	4496-4502			500 gals. 15% MCA 1000 gals. 15% NE		Perfs	
TUBING RECORD		Size 2 3/8" Set At	Packer at	Liner Run <input type="checkbox"/> Yes <input checked="" type="checkbox"/> No			
Date of First Production		OD EUE	4497	No			
1-15-88		Producing Method <input type="checkbox"/> Flowing <input checked="" type="checkbox"/> Pumping <input type="checkbox"/> Gas Lift <input type="checkbox"/> Other (explain).....					
Estimated Production Per 24 Hours	Oil	Gas	Water	Gas-Oil Ratio	Gravity		
50 Bbls	No	MCF	10 Bbls	CFPB	40		

METHOD OF COMPLETION

Production Interval

Disposition of gas:  Vented  Open Hole  Perforation  
 Sold  Other (Specify) ..... 4496-4502  
 Used on Lease  Dually Completed .....  
 Commingled



DAILY COMPLETION REPORT

WELL NAME: McNINCH "B" #2 PROSPECT: McNINCH "B" #2  
 LOCATION: NW SW NW Section 2-16S-25W, Ness County, Kansas  
 OPERATOR: DOUBLE EAGLE EXPLORATION, INC.  
 CONTRACTOR: HEMBREE WELL SERVICE - Double Drum  
 PROPOSED TD: \_\_\_\_\_ COMPLETION SUPERVISOR - RUSSELL BRIGHT

<u>DATE</u>	<u>COMPLETION REPORT:</u>
1/7/88	Hembree Well Service moved in Double Drum and rigged up. Ran 3 7/8" bit to top of cement.
1/8/88	Rigged up Golden B circulating - Drilled rubber plug, insert float and 31' of cement. Great Guns ran Gamma Ray correlation bond log - found plug back T. D. at 4498.
1/9/88	Halliburton cemented back side w/casing pressured to 500#. Cemented w/475 sacks Halliburton light. Ran 3 7/8" bit on tubing - Golden B drilled out 6' of cement and drilled out guide shoe. T. D. 4504'. Pulled tubing and bit. Swabbed well down and shut in.
1/10/88	Sunday - Down
1/11/88	200' of fluid - 1% H2O. Great Guns perforated 4496 to 4502. 3 shots per foot. Swabbed down dry. Ran bailer 3 times to get all fluid. Service Acid went w/500 gallons 15% NCA. Could not get acid to formation. Oil in hole above perforations. Ran tubing and spotted acid at 4500'. Pressured to 1300# and stopped pump. Pressure back to 1000#. Started treating 15 gal. per minute at 1150# slowly back to 900#. Increase rate to 1/2 barrel per minute at 700# slowly breaking back to 500#. Acid clear. Instant shut in pressure 300# - 0 in 2 min.. Swabbed back 46 barrels of 84 barrel load. Had show of oil from 2800'. Shut in at dark.
1/12/88	Had 2000' of fluid in hole. 400' of oil - 1600' of water. Continued swabbing load back. Swab down 75.51 bbls.. Last pull 35% Oil.

30 minute tests

.93 T. F.	50% Oil	.4650 Oil	.4650 H2O
1.13 T. F.	81% Oil	.92 Oil	.24 H2O
1.13 T. F.	76% Oil	.86 Oil	.27 H2O
1.13 T. F.	60% Oil	.68 Oil	.45 H2O
.94 T. F.	80% Oil	.75 Oil	.19 H2O
.94 T. F.	74% Oil	.70 Oil	.24 H2O
1.13 T. F.	77% Oil	.87 Oil	.26 H2O
.75 T. F.	90% Oil	.68 Oil	.07 H2O
1.31 T. F.	90% Oil	1.18 Oil	.13 H2O
.75 T. F.	94% Oil	.71 Oil	.04 H2O
.94 T. F.	92% Oil	.86 Oil	.06 H2O
1.13 T. F.	94% Oil	1.06 Oil	.07 H2O
.94 T. F.	98% Oil	.92 Oil	.02 H2O

1/12/88

Double Eagle Exploration, Inc.  
Wichita, Kansas

DAILY COMPLETION REPORT:

McNINCH "B" 2

NW SW NW Sec. 2-16S-25W, Ness Co., Kansas

DATE:

COMPLETION REPORT:

1/13/88

Overnight fillup 1050' - 100% Oil. Service Acid went w/1000 gallons 15% NE. Treated 1 bbl. per minute at 350# breaking back to 300#. Increased rate to 1½ bbls. per minute at 350#. Rate steady throughout rest of job. Instant shut in pressure 100# in 5 minutes on vacuum. Swabbed back 78.28 bbls. of 109 bbl. load. Last pull off bottom on swab down 33% oil. Swabbing through casing.

30 Minute Tests

6.19 T. F.	54% Oil	3.34 Oil	2.65 H2O
5.84 T. F.	70% Oil	4.08 Oil	1.76 H2O
4.31 T. F.	58% Oil	2.49 Oil	1.82 H2O
4.50 T. F.	67% Oil	3.02 Oil	1.48 H2O
3.75 T. F.	68% Oil	2.55 Oil	1.20 H2O

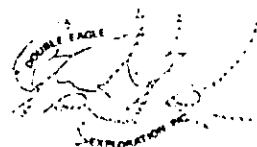
86.89 of 109 Bbl. load      99.3 T. F.

1/14/88

Overnight fill-up, 1550' - all oil.

# Double Eagle Exploration, Inc.

460-CENTURY PLAZA BUILDING / WICHITA, KANSAS 67202 / (316) 267-3316



## DAILY DRILLING REPORT

API# 135-23,197

Well Name: McNINCH B #2 Prospect: McNINCH

Location: 100' East of NW, SW, NW Sec. 2-16S-25W, Ness County, Kansas

Operator: DOUBLE EAGLE EXPLORATION, INC. Contractor: Rains & Williamson

Proposed TD: 4550'

Elevation: 2546' GR 2551' KB AFE: DHC CWC

Well Site Geologist: Harlan Dixon

Rig Phone (913) 625-7977 - Grainfield

### SAMPLE TOPS:

Anhydrite	1964' + 587
Base/Anhydrite	2010' + 540
Heebner	3861' - 1310
Toronto	3881' - 1330
Lansing	3909' - 1351
Ft. Scott	4401' - 1850
Mississippi Dol.	4497' - 1946
TD	4507' - 1957

### ELECTRIC LOG TOPS:

Anhydrite	1956' + 595
Heebner	3858' - 1307
Toronto	3876' - 1325
Lansing	3900' - 1349
Ft. Scott	4396' - 1845
Miss. Lime	4482' - 1931
Miss. Dolomite	4496' - 1945
LTD	4508' - 1957

<u>DATE</u>	<u>DEPTH</u>	<u>DRILLING OPERATIONS</u>
12-11-87		Ran 9 Jts. of new 23# 8 5/8" casing. Tallied 379.47'. Set at 387.50. Cemented by Halliburton w/225 sacks 60-40 poz., 3% cc, 2% gel.
12-12-87		Plug down at 1:45 A. M., Cement circ.. Went under surface at 9:45 P. M..
12-13-87	2010'	Drilling ahead. Vic. 29 - Wt. 9.2
12-14-87	2725'	Drilling ahead. Vic. 30 - Wt. 9.3
12-15-87	3108'	Coming out of hole for twist off - Vis. 34 - Wt. 9.3
12-16-87	3315'	Back in hole at 7:15 last night - Vis. 33 - Wt. 9.4
12-17-87	3805'	Drilling ahead Vic. 29 - Wt. 9.2
12-18-87	4190'	Drilling ahead Vic. 48 - Wt. 9.3
12-19-87		<u>DST #1 4386' - 4430' (Ft. Scott)</u> <u>30-45-60-90</u> Strong blow off bottom in 3 minutes Recovered 815' Total Fluid 520' of clean gassy oil 295' HO & GCM (25% Mud, 50% Oil, 25% Gas) IFP 86-140#, FFP 237-291# ISIP 1303#, FSIP 1205# Bottom Hole Temperature 120 37 Gravity Oil

57

DEC 26 1987

DAILY DRILLING REPORT

Page 2

McNinch "B" #2

100' East of NW, SW, NW Sec. 2-16S-25W

Ness County, Ks.

<u>DATE</u>	<u>DEPTH</u>	<u>DRILLING OPERATIONS</u>
12-20-87		<u>DST #2 4467' - 4507'</u> (Mississippi Dol.) 30-45-60-90 Recovered: 200' of Gas in Pipe 165' Clear gassy oil 300' Heavy Oil Cut Mud (50% mud, 30% Oil, 20% Gas) IFP 75-97#, FFP 151-172# ISIP 722#, FSIP 711# Running Great Guns Log - Ran RA Guard Log
12-21-87		Ran 108 jts. 4 1/2" 10.5 new API Casing, Guide shoe, insert float and automatic fillup. Centralizer on #1-3-5-9-11-15 & 18. Ran 1 on 61st. joint and 80th joint with cement basket sliding on 61st joint. Halliburton cemented w/150 sks. 60-40 poz, 18% salt, 3/4 of 1% CFRZ, 2% gel. Plug down at 12:10 P. M. w/1100#. Released and holding.

57

DEC 28 1987

CUSTOMER COPY

INVOICE  
INVOICE



A DIVISION OF HALLIBURTON COMPANY

REMIT TO:

P. O. BOX 651044  
DALLAS, TX 75265

INVOICE NO.	DATE
620124	01/04/1988

WELL LEASE NO.	WELL LOCATION	STATE	WELL OWNER
MONTINCH 'B' 2	NESS	KY	SAME
SERVICE LOCATION	CONTRACTOR	JOB PURPOSE	TICKET DATE
NESS CITY	HEMPHREY	TOP OUTSIDE NON-PROD CASING	01/04/1988
ACCT. NO.	CUSTOMER AGENT	VENDOR NO.	CUSTOMER P.O. NUMBER
245152	RUSSELL BRIGHT		
		SHIPPED VIA	FILE NO.
		COMPANY TRUCK	71968

DOUBLE EARTH EXPLORATION, INC.  
460 CENTURY PLAZA BUILDING  
WICHITA, KS 67202

DIRECT CORRESPONDENCE TO:

SUITE 500  
COLORADO DENBY BUILDING  
WICHITA, KS 67202

PRICE REF. NO.	DESCRIPTION	QUANTITY	U/M	UNIT PRICE	AMOUNT
000-117	RELEASE	24	HL	2.10	50.40
011-205	MISCELLANEOUS SERVICES JOBS	1	UNT		
040-177	TEMPERATURE SURVEY	500	PSJ	1.80	900.00
504-113	HALLIBURTON CEMENT	1	UNT		
507-212	LOCELL	1	RLW	255.00	255.00
509-207	BULK SERVICE CHARGE	475	SK	4.92	2,337.00
500-306	RELEASE	119	LN	1.21	143.99
		475	CIT	.25	118.75
		526,968	TNI	.70	368,878
	INVOICE TOTAL				4,192.52
	ALLOWANCE (PID)				612.71
	INVOICE NET AMOUNT				3,579.81
	* KANSAS STATE SALES TAX				112.24
					3,692.05

475 SK light cement  
Temperature Survey  
release - cement off top  
1-123,009

#2 well MAY 04 1988

RECEIVED  
STATE COMMISSION

CONSERVATION DIVISION  
- Wichita, Kansas

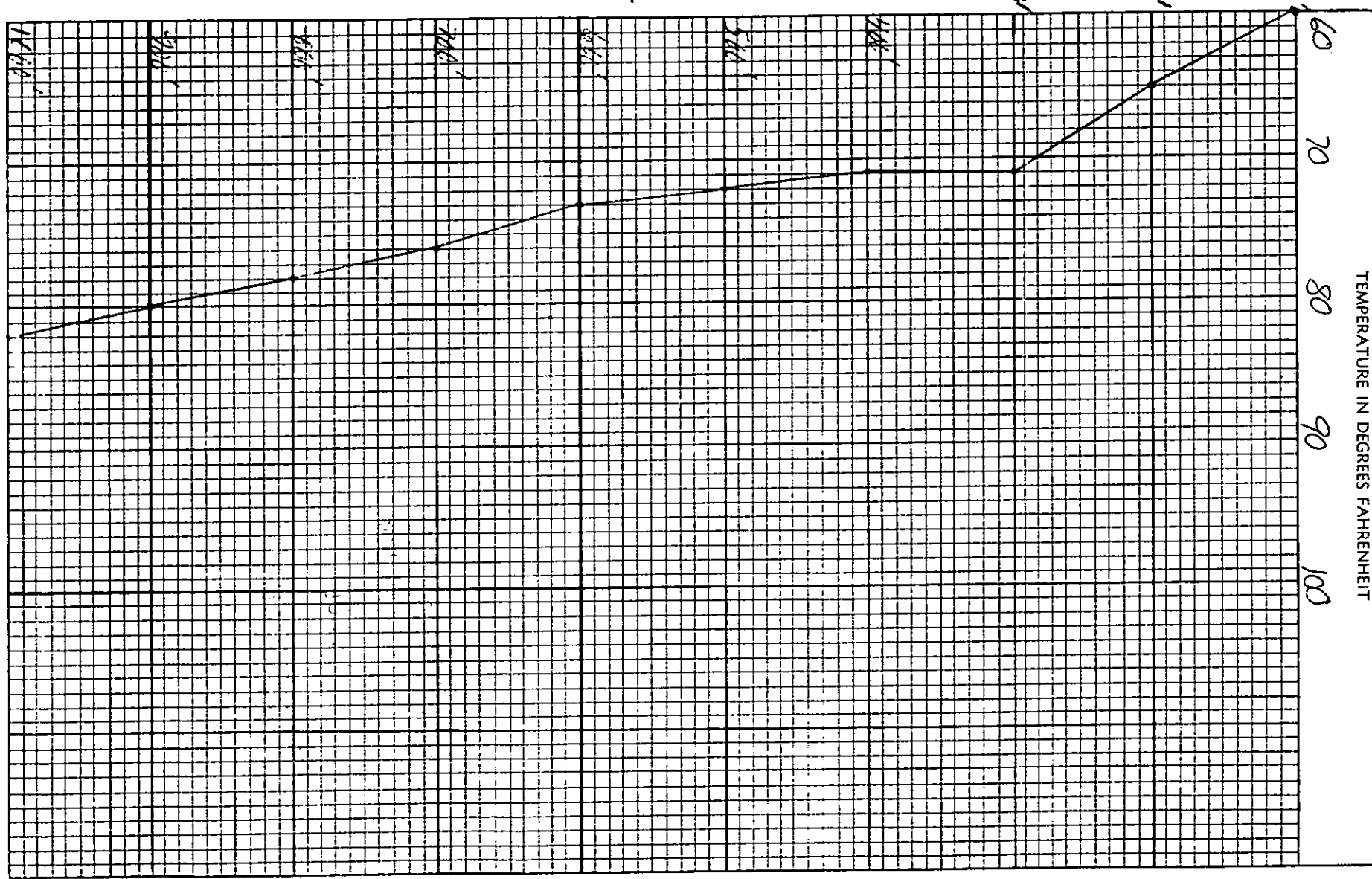
INVOICE TOTAL - PLEASE PAY THIS AMOUNT \$3,692.05

TERMS: INVOICES PAYABLE NET BY THE 20TH OF THE FOLLOWING MONTH AFTER DATE OF INVOICE UPON CUSTOMER'S DEFAULT IN PAYMENT OF CUSTOMER'S ACCOUNT BY THE LAST DAY OF THE MONTH FOLLOWING THE MONTH IN WHICH THE INVOICE IS DATED. CUSTOMER AGREES TO PAY INTEREST THEREON AFTER DEFAULT AT THE HIGHEST LAWFUL CONTRACT RATE APPLICABLE BUT NEVER TO EXCEED 18% PER ANNUM IN THE EVENT IT BECOMES NECESSARY TO EMPLOY AN ATTORNEY TO ENFORCE COLLECTION OF SAID ACCOUNT, CUSTOMER AGREES TO PAY ALL COLLECTION COSTS AND ATTORNEY FEES IN THE AMOUNT OF 20% OF THE AMOUNT OF THE UNPAID ACCOUNT

COMPANY Double Eagle Exp  
 WELL NO. McAlmch 'B' #2  
 POOL \_\_\_\_\_  
 STATE Kansas COUNTY Ness  
 DATE OF CEMENTING 1-9-88 TIME 1000  
 DATE OF SURVEY 1-10-88 TIME 1400  
 AMOUNT OF CEMENT 400 TYPE HLC  
 AMOUNT OF ADMIX \_\_\_\_\_ TYPE \_\_\_\_\_  
 LOG MEASURED FROM \_\_\_\_\_  
 DRILLING MEASURED FROM \_\_\_\_\_

CASING SIZE 4 1/2 FROM \_\_\_\_\_ TO \_\_\_\_\_ CASING DEPTH TO 4550'  
 DIAM. OF HOLE 7 7/8 FROM 300' TO T.D  
 SURVEY BEGINS AT 100' FEET. ENDS AT 200' FEET.  
 APPROX. CALCULATED FILL-UP OF \_\_\_\_\_ FT. BASED ON PERFECT HOLE AND ON AN AVERAGE OF \_\_\_\_\_  
 CU. FT. PER SACK OF SET CEMENT \_\_\_\_\_  
 APPROX. TOP CEMENT 200' to 2000' FEET. MAX. TEMP. 97° at 2000' FEET.  
 RECORDED BY \_\_\_\_\_ WITNESSED \_\_\_\_\_

REMARKS OR OTHER DATA



MEASURING LINE  
**TEMPERATURE SURVEY**

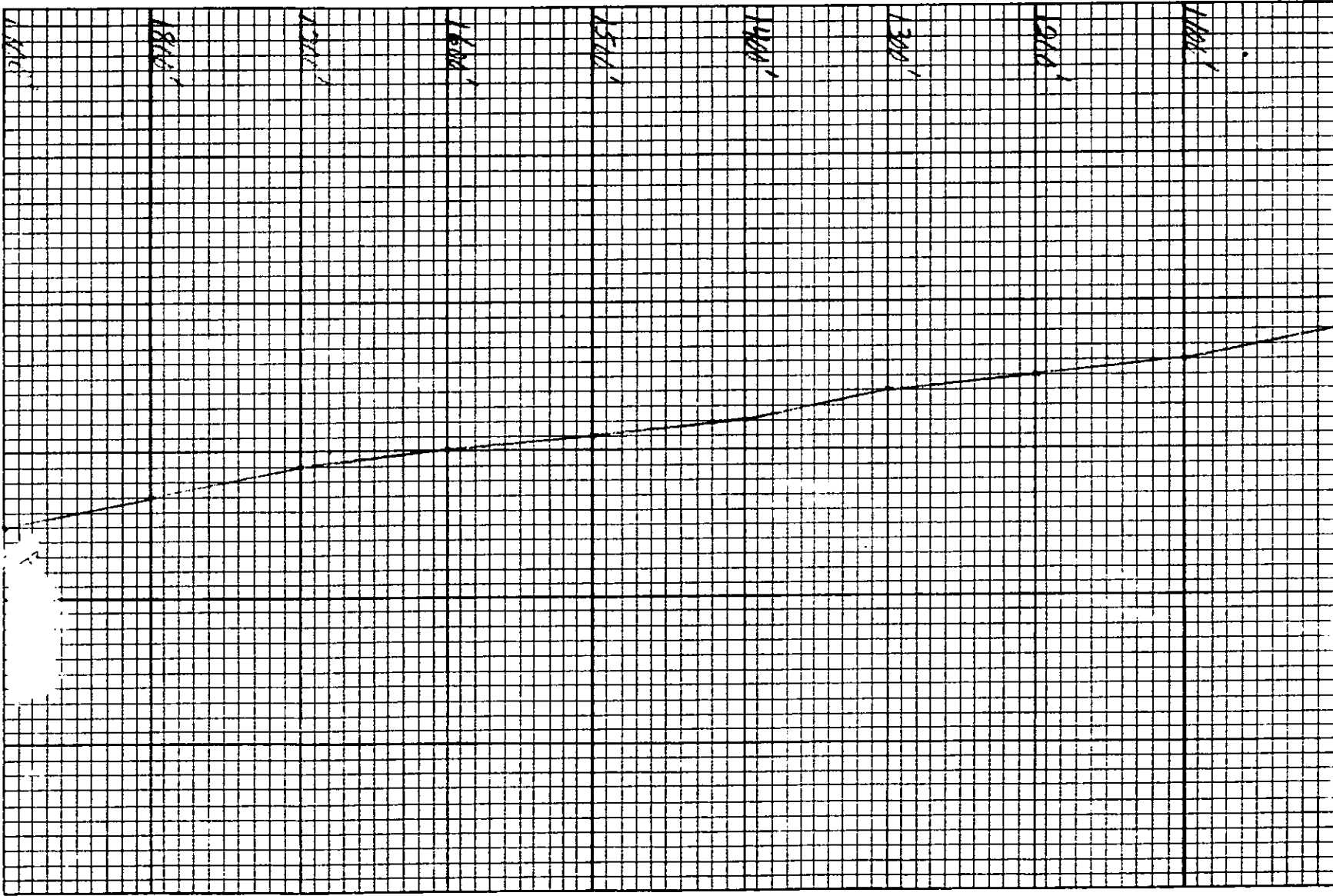
TEMPERATURE IN DEGREES FAHRENHEIT



COMPANY Double Eagle Exp  
 WELL NO. McNinch B #2  
 POOL \_\_\_\_\_  
 STATE \_\_\_\_\_ COUNTY \_\_\_\_\_  
 DATE OF CEMENTING \_\_\_\_\_ TIME \_\_\_\_\_  
 DATE OF SURVEY \_\_\_\_\_ TIME \_\_\_\_\_  
 AMOUNT OF CEMENT \_\_\_\_\_ TYPE \_\_\_\_\_  
 AMOUNT OF ADMIX \_\_\_\_\_ TYPE \_\_\_\_\_  
 LOG MEASURED FROM \_\_\_\_\_  
 DRILLING MEASURED FROM \_\_\_\_\_

CASING SIZE \_\_\_\_\_ CASING DEPTH \_\_\_\_\_ DIAM. OF HOLE \_\_\_\_\_  
 FROM \_\_\_\_\_ TO \_\_\_\_\_ FROM \_\_\_\_\_  
 SURVEY BEGINS AT \_\_\_\_\_ FEET. ENDS AT \_\_\_\_\_  
 APPROX. CALCULATED FILL-UP OF \_\_\_\_\_ FT. BASED ON PERFECT HOLE  
 \_\_\_\_\_ CU. FT. PER SACK OF SET CEMENT  
 APPROX. TOP CEMENT \_\_\_\_\_ FEET. MAX. TEMP. \_\_\_\_\_  
 RECORDED BY \_\_\_\_\_ WITNESSED \_\_\_\_\_  
 REMARKS OR OTHER DATA \_\_\_\_\_  
 \_\_\_\_\_  
 \_\_\_\_\_

Form 1403-R2



JUN 2 1964  
 JUN 2 1964

COMPANY Double Eagle Exp  
 WELL NO. McAinch B #2  
 POOL \_\_\_\_\_  
 STATE \_\_\_\_\_ COUNTY \_\_\_\_\_  
 DATE OF CEMENTING \_\_\_\_\_ TIME \_\_\_\_\_  
 DATE OF SURVEY \_\_\_\_\_ TIME \_\_\_\_\_  
 AMOUNT OF CEMENT \_\_\_\_\_ TYPE \_\_\_\_\_  
 AMOUNT OF ADMIX \_\_\_\_\_ TYPE \_\_\_\_\_  
 LOG MEASURED FROM \_\_\_\_\_  
 DRILLING MEASURED FROM \_\_\_\_\_

CASING SIZE \_\_\_\_\_ CASING DEPTH \_\_\_\_\_ DIAM. OF HOLE \_\_\_\_\_  
 FROM \_\_\_\_\_ TO \_\_\_\_\_ FROM \_\_\_\_\_  
 SURVEY BEGINS AT \_\_\_\_\_ FEET, ENDS AT \_\_\_\_\_  
 APPROX. CALCULATED FILL-UP OF \_\_\_\_\_ FT. BASED ON PERFECT HOLE /  
 \_\_\_\_\_ CU. FT. PER SACK OF SET CEMENT  
 APPROX. TOP CEMENT \_\_\_\_\_ FEET. MAX. TEMP. \_\_\_\_\_  
 RECORDED BY \_\_\_\_\_ WITNESSED \_\_\_\_\_  
 REMARKS OR OTHER DATA \_\_\_\_\_  
 \_\_\_\_\_  
 \_\_\_\_\_

