

TYPE

**NOTICE OF INTENTION TO DRILL**

C-1

TO BE FILED WITH THE STATE CORPORATION COMMISSION  
PRIOR TO COMMENCEMENT OF WELL

API Number 15-101-20,194-00-00  
(For office use only)

1. Operator The Dane G. Hansen Trust  
Address P. O. Box 187, Logan, Kansas 67646
2. Contractor C-G Drilling Co.  
Address 1107 Union National Bldg., Wichita, Ks.
3. Type of Equipment: Rotary  Cable Tool \_\_\_\_\_
4. Well to be Drilled for: Oil  Gas \_\_\_\_\_  
Disposal \_\_\_\_\_ Input \_\_\_\_\_ Other \_\_\_\_\_
5. Depth of Deepest Fresh Water within 1 mile 150 ft.
6. Depth of Municipal Water Well within 3 miles None ft.
7. Depth to Protect all Fresh Water 200 ft.
8. Amount of Surface Casing to be set 230 ft.
9. Alternate No. 1 \_\_\_\_\_ No. 2  \_\_\_\_\_

Starting Date October 12, 1976

County Lane

Sec. 3 Twp. 16s S Rge. 28 <sup>E</sup>/<sub>W</sub>

Spot Location SE SE

Nearest Lease Line 660 ft.

Lease Name Roberts

Well No. 1

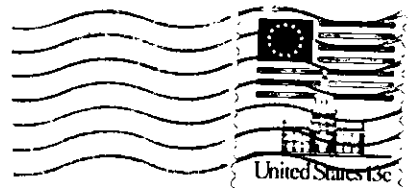
Est. Total Depth 4400 ft.

REMARKS:

OPERATOR STATES THAT HE WILL COMPLY WITH K. S. A. 55-128

Signature of Operator *W. Lane Roberts*





**State Corporation Commission of Kansas**  
**Conservation Division**  
**P. O. Box 17027**  
**Wichita, Kansas 67217**

**RECEIVED**  
 STATE CORPORATION COMMISSION

**OCT 07 1976**

CONSERVATION DIVISION  
 Wichita, Kansas

**(IF PREFERRED, MAIL IN ENVELOPE)**