

CARDS MUST  
BE TYPED

Exp. 11-3-82

CORRECTED LOCATION

CORRECTION  
C-1  
MI-1331

STATE OF KANSAS  
**NOTICE OF INTENTION TO DRILL**

TO BE FILED WITH THE STATE CORPORATION COMMISSION  
5 DAYS PRIOR TO COMMENCEMENT OF WELL

API Number 15- 101 -20,667 -00-00  
(For office use only)

1. Operator MOBLE C. HOOVER  
Address NBC Plaza, Suite 302  
City-State El Dorado, Arkansas 71730 Zip Code 71730

Starting Date May 15, 1982  
Month Day Year

County Lane

2. Contractor Abercrombie Drilling, Inc.  
Address 801 Union Center  
City-State Wichita, Kansas 67202 Zip Code 67202

\* Sec. 25 Twp. 18S S. Rng. 28W ~~K&K~~ West

Exact Spot Location of Well 430'fr South Line  
960'fr West line of SW/4  
Section 2518S-28W

- 3. Type of Equipment: Rotary:  Air: \_\_\_\_\_ Cable Tools: \_\_\_\_\_
- 4. Well to be Drilled for: Oil:  Gas: \_\_\_\_\_ SWD: \_\_\_\_\_ Input: \_\_\_\_\_
- 5. Well Classification: Infield \_\_\_\_\_ Pool Ext.  Wildcat \_\_\_\_\_
- 6. Depth of Deepest Fresh Water within 1 mile 100 ft.
- 7. Depth of Municipal Water Well within 3 miles None ft.
- 8. Depth to Protect all Fresh Water (Table 1) 600 ft.
- 9. Amount of Surface Casing to be set 300 ft.
- 10. (Surface Casing) Alternate No. 1 \_\_\_\_\_ Alternate No. 2 \_\_\_\_\_

Nearest Lease Line \_\_\_\_\_

Lease Name Seifried

Well No. 1

Est. Total Depth 4300 ft.

\$40.00 FEE PAID  5/3/82

OPERATOR STATES THAT HE WILL COMPLY WITH K.S.A. 55-128

REMARKS:

Ac # 11785

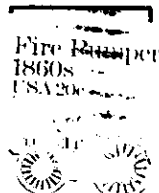
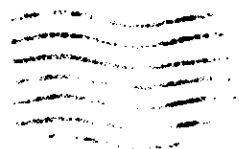
Signature of Operator

Moble C. Hoover

Moble C. Hoover Tele. 501-863-4531

was: 27W

M. C. HOOVER  
302 NBC BLDG  
EL DORADO, ARK.  
71730



**State Corporation Commission of Kansas**  
**Conservation Division**  
**245 North Water**  
**Wichita, Kansas 67202**

**(IF PREFERRED, MAIL IN ENVELOPE)**

**RECEIVED**  
STATE CORPORATION COMMISSION

**MAY 10 1987**

**CONSERVATION DIVISION**  
Wichita Kansas