

STATE CORPORATION COMMISSION OF KANSAS
OIL & GAS CONSERVATION DIVISION
WELL COMPLETION OR RECOMPLETION FORM
ACO-1 WELL HISTORY
DESCRIPTION OF WELL AND LEASE

5

API NO. 15-135-23,081-60-00
County Ness
SE NW NE 6 17S 22 East
..... Sec..... Twp..... Rge..... / X West

Operator: License # 4767
Name Ritchie Exploration, Inc.
Address 125 N. Market, Suite 1000
Wichita, KS 67202
City/State/Zip

4290 Ft North from Southeast Corner of Section
1650 Ft West from Southeast Corner of Section
(Note: Locate well in section plat below)

Purchaser Koch Oil Company
Wichita, KS

Lease Name V. Higgins Well # 1

Operator Contact Person Leah Ann Kasten
Phone 316-267-4375

Field Name unnamed Weeks North

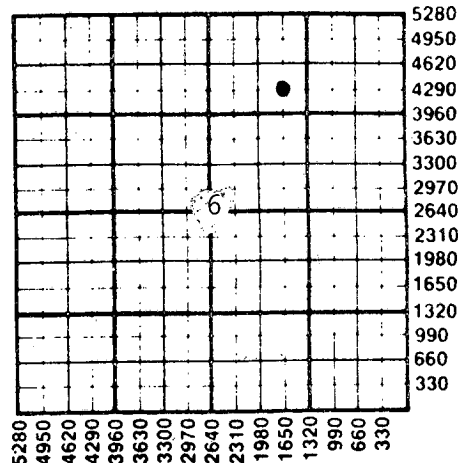
Producing Formation Cherokee sand

Contractor License # 6033
Name Murfin Drilling Company

Elevation: Ground 2373' KB 2378'

Wellsite Geologist Leah Ann Kasten
Phone 316-267-4375

Section Plat



Designate Type of Completion
X New Well Re-Entry Workover
X Oil SWD Temp Abd
Gas Inj Delayed Comp.
Dry Other (Core, Water Supply etc.)

If OWWO: old well info as follows:
Operator
Well Name
Comp. Date Old Total Depth

WATER SUPPLY INFORMATION

Disposition of Produced Water: XX Disposal
Docket # D 23,152 Repressuring

WELL HISTORY

Drilling Method:
X Mud Rotary Air Rotary Cable
12-14-86 12-22-86 2/06/87
Spud Date Date Reached TD Completion Date
4470' n/a
Total Depth PBTD 8-5/8" @ 215'
Amount of Surface Pipe Set and Cemented at...feet
Multiple Stage Cementing Collar Used? Yes X No
If yes, show depth set...feet
If alternate 2 completion, cement circulated
from 4470' feet depth to 100' w/ 410 SX cmt
Cement Company Name Allied Cement
Invoice # 47878

Questions on this portion of the ACO-1 call:

Water Resources Board (913) 296-3717
Source of Water: Hauled.
Division of Water Resources Permit #
Groundwater.....Ft North from Southeast Corner
(Well)Ft West from Southeast Corner of
Sec Twp Rge East West
Surface Water.....Ft North from Southeast Corner
(Stream, pond etc).....Ft West from Southeast Corner
Sec Twp Rge East West
Other (explain) Ralph Pfaff, Brownell, Ks.
(purchased from city, R.W.D. #)

INSTRUCTIONS: This form shall be completed in triplicate and filed with the Kansas Corporation Commission, 200 Colorado Derby Building, Wichita, Kansas 67202, within 120 days of the spud date of any well. Rule 82-3-130, 82-3-107 and 82-3-106 apply. Information on side two of this form will be held confidential for a period of 12 months if requested in writing and submitted with the form. See rule 82-3-107 for confidentiality in excess of 12 months. One copy of all wireline logs and drillers time log shall be attached with this form. Submit CP-4 form with all plugged wells. Submit CP-111 form with all temporarily abandoned wells.

All requirements of the statutes, rules and regulations promulgated to regulate the oil and gas industry have been fully complied with and the statements herein are complete and correct to the best of my knowledge.

Signature [Signature]

Title President Date 3/10/87

Subscribed and sworn to before me this 10th day of March 1987.

Notary Public [Signature] STATE CORPORATION COMMISSION

Date Commission Expires 6/07/88 MAY 6 1987

K.C.C. OFFICE USE ONLY
F Letter of Confidentiality Attached
C Wireline Log Received
C Drillers Timelog Received
Distribution
KCC SWD/Rep NGPA
KGS Plug Other (Specify)



CONSERVATION DIVISION
Wichita, Kansas

Form ACO-1 (5-86)

Sec 6, Twp 17, Rge 22 W

Operator Name Ritchie Exploration, Inc. Lease Name V. Higgins Well # 1

Sec. 6 Twp. 17S Rge. 22 East West County Ness

WELL LOG

INSTRUCTIONS: Show important tops and base of formations penetrated. Detail all cores. Report all drill stem tests giving interval tested, time tool open and closed, flowing and shut-in pressures, whether shut-in pressure reached static level, hydrostatic pressures, bottom hole temperature, fluid recovery, and flow rates if gas to surface during test. Attach extra sheet if more space is needed. Attach copy of log.

Drill Stem Tests Taken Yes No
 Samples Sent to Geological Survey Yes No
 Cores Taken Yes No

Formation Description
 Log Sample

DST #1 from 4260'-4296' (Ft. Scott)
 Recovered 60' of gas in pipe & 50' of slightly oil cut mud.
 IFP: 35-35#/45"; ISIP: 221#/45";
 FFP: 46-46#/45"; FSIP: 186#/45".

Name	Top	Bottom
Anhydrite	1686' (+ 692)	
B/Anhy	1723' (+ 655)	
Heebner	3773' (-1395)	
Lansing	3812' (-1434)	
B/KC	4092' (-1714)	
Pawnee	4187' (-1809)	
Ft. Scott	4286' (-1908)	
Cher. Sh.	4302' (-1924)	
U. Cher. Sd.	4304' (-1926)	
Cgl. chert	4365' (-1987)	
Cg. sd.	4386' (-2008)	
Miss.	4403' (-2025)	
LTD	4472' (-2094)	

DST #2 from 4297'-4315' (Upper Cher. sand). Recovered 300' of gas in pipe 570' of heavy oil cut water, & 120' of water. IFP: 116-175#/15"; ISIP: 1043#/30"; FFP: 233-292#/15"; FISP: 1031#/30".

DST #3 from 4360'-4375' (Cgl. chert)
 Recovered 4' of drilling mud.
 IFP: 23-23#/30"; ISIP: 35#/30";
 FFP: 23-23#/30"; FSIP: 23#/30".

DST #4 from 4360'-4402' (Cgl. sand)
 Recovered 150' of muddy oil.
 IFP: 46-70#/45"; ISIP: 1214#/45"; FFP:
 81-105#/45"; FSIP: 1157#/30".

CASING RECORD New Used

Report all strings set-conductor, surface, intermediate, production, etc.

Purpose of String	Size Hole Drilled	Size Casing Set (in O.D.)	Weight Lbs/Ft.	Setting Depth	Type of Cement	#Sacks Used	Type and Percent Additives
Surface	12 1/4"	8-5/8"	23#	215'	60-40 Poz	150	.2% gel, .3% dc
Production	7-7/8"	5 1/2"	14#	4478.43	ATL	275	10% salt & 8% gilsonite

PERFORATION RECORD

Acid, Fracture, Shot, Cement Squeeze Record

Shots Per Foot	Specify Footage of Each Interval Perforated	(Amount and Kind of Material Used)	Depth
8 shots	4386'-4391'	Acid w/1500 gal. MCA w/iron seq. Squeeze w/335 sax common cement	4386-91'
4 shots	4304'-05' & 4305'-06'	Acid w/500 gal. of 15% MCA, .3 gal. of iron seq, 10 gal. acetic acid w/10 bbl. KCL water	4304'-06'

TUBING RECORD

Size Set At Packer at Liner Run Yes No

Date of First Production Producing Method Flowing Pumping Gas Lift Other (explain).....

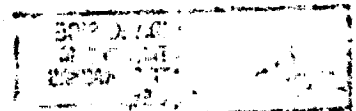
Estimated Production Per 24 Hours	Oil Bbls	Gas MCF	Water Bbls	Gas-Oil Ratio	Gravity
15			30		

METHOD OF COMPLETION

Production Interval

Disposition of gas: Vented Sold Used on Lease Open Hole Other (Specify) Perforation
 4304'-06'

Dually Completed Commingled



3-483-2627, Russell, Kansas
 316-793-5861, Great Bend, Kansas

Phone Plainville 913-434-2812
 Phone Ness City 913-798-3843

ALLIED CEMENTING CO., INC.

N^o 2514

Home Office P. O. Box 31

Russell, Kansas 67665

OLP

Date	2-23-88	Sec.	6	Twp.	17	Range	22 ^W	Called Out	1	On Location	11:15AM	Job Start	2:00PM	Finish	6:45PM
Lease	V. Higgins	Well No.	1	Location	Brownell 2 1/2 W 2 S W 1/4			County	NESS	State	KS				
Contractor	Ludwick Well Service											Owner	Same		
Type Job	Plug Thru tubing														
Hole Size	8 5/8	T.D.	215'												
Csg.	5 1/2	Depth	4468'												
Tbg. Size															
Drill Pipe															
Tool	Packer	Depth	4245'												
Cement Left in Csg.															
Press Max.															
Meas Line															
Perf.	4304-06 Hole 945'-1200'														

EQUIPMENT

G.T Bend No.	Cementer	Phil	
Pumptrk 195	Helper	Duke	
No.	Cementer		
Pumptrk	Helper		
	Driver	Melley	
Bulktrk 68		JACK #101	
Bulktrk NESS	Driver	EB	

DEPTH of Job

Reference:	Pump Trk Chg	340.00
17	Pump Trk Mfg	17.00
	Sub Total	
	Tax	
	Total	357.00

Remarks:

Mixed 2Hulls 15SKS 60/40 6%gel
 Unseat Packer Plug 6 Joints Circ Hole
 with gel pull to 1650' spot 20 SKS cement
 Pull all Joints out of Hole tie into casing
 20 SKS
 Unseat and shut in back
 shut everything in
 Thank you!

Charge To Ritchie Exploration Inc
 Street 125 N. Market Suite 100C
 City Wichita State KS 67202
 The above was done to satisfaction and supervision of owner agent or contractor
 Purchase Order No.
 X Bennie Dick

CEMENT

Amount Ordered	35 SKS 60/40 6%gel 150 SKS ATL		
Consisting of	18 gel 200 #Hulls		
Common	21	5.00	105.00
Poz. Mix	14	2.10	29.40
Gel.	20	6.75	135.00
Chloride			
Quickset	150 ATL	5.25	787.50
Hulls - 2		14.00	28.00
		Sales Tax	
Handling	18.5	1.75	138.75
Mileage	17		105.57
		Sub Total	
		FEB 26 1988	
		MAR 02 1988	
		Total	1329.22

Floating Equipment
 Total \$1686.22
 Less Disc 337.25
 Net 30 Days 1348.97

MAR 4 1988
 CONSERVATION DIVISION
 Wichita, Kansas