

KANSAS CORPORATION COMMISSION
OIL & GAS CONSERVATION DIVISION,

4/17/14 Form ACO-1
June 2009
Form Must Be Typed
Form must be Signed
All blanks must be Filled

CONFIDENTIAL

WELL COMPLETION FORM
WELL HISTORY - DESCRIPTION OF WELL & LEASE

ORIGINAL

OPERATOR: License # 32638
Name: Nadel and Gussman, LLC
Address 1: 15 E. 5th St
Address 2: Suite 3200
City Tulsa State OK Zip 74103
Contact Person: Kim Tackett
Phone: (918) 582-9900 ext 222
CONTRACTOR: License # 34600
Name: Horizon Energy Services, LLC
Wellsite Geologist: Steve Tilley
Purchaser Coffeyville Resources

API No 15 - 019-27125-01-00
Spot Description:
SE SE SW SW Sec. 6 Twp. 33 S. R. 9 East, West
165 Feet from North / South Line of Section
1,200 Feet from East / West Line of Section

Designate Type of Completion:
 New Well Re-Entry Workover
 Oil WSW SWD SIOW
 Gas D&A ENHR SIGW
 OG GSW Temp Abd
 CM (Coal Bed Methane)
 Cathodic Other (Core, Expl., etc.): HZ Oil

Footages Calculated from Nearest Outside Section Corner:
 NE NW SE SW
County: Chautauqua
Lease Name: Haden Ranch Well #: 1A-6-33-9H
Field Name Unnamed
Producing Formation Mississippi Lime
Elevation. Ground: 1088 Kelly Bushing: 1098
Total Depth: 5052 Plug Back Total Depth: 5029
Amount of Surface Pipe Set and Cemented at: 146 Feet
Multiple Stage Cementing Collar Used? Yes No
If yes, show depth set: 603 Feet
If Alternate II completion cement circulated from: 603
feet depth to: surface w/ 70 sx extended light & 70 sx "A" sx cmt.

If Workover/Re-entry: Old Well Info as follows:
Operator: _____
Well Name: _____
Original Comp Date: _____ Original Total Depth: _____
 Deepening Re-perf Conv to ENHR Conv to SWD
 Conv. to GSW
 Plug Back: _____ Plug Back Total Depth _____
 Commingled Permit #: _____
 Dual Completion Permit #: _____
 SWD Permit #: _____
 ENHR Permit #: _____
 GSW Permit #: _____
1-3-2012 1-27-2012 3-12-2012
Spud Date or Date Reached TD Completion Date or Recompletion Date

Drilling Fluid Management Plan
(Data must be collected from the Reserve Pit)
Chloride content 1500 ppm Fluid volume: 14,000 bbls
Dewatering method used evaporation
Location of fluid disposal if hauled offsite _____
Operator Name: _____
Lease Name _____ License #: _____
Quarter CONFIDENTIAL S. R. CONFIDENTIAL East West
County CONFIDENTIAL Permit #: _____
APR 17 2014
KCC

RECEIVED
MAY 02 2012
KCC WICHITA

INSTRUCTIONS: An original and two copies of this form shall be filed with the Kansas Corporation Commission, 130 S. Market - Room 2078, Wichita, Kansas 67202, within 120 days of the spud date, recompletion, workover or conversion of a well. Rule 82-3-130, 82-3-106 and 82-3-107 apply. Information of side two of this form will be held confidential for a period of 12 months if requested in writing and submitted with the form (see rule 82-3-107 for confidentiality in excess of 12 months). One copy of all wireline logs and geologist well report shall be attached with this form. ALL CEMENTING TICKETS MUST BE ATTACHED. Submit CP-4 form with all plugged wells. Submit CP-111 form with all temporarily abandoned wells

AFFIDAVIT

I am the affiant and I hereby certify that all requirements of the statutes, rules and regulations promulgated to regulate the oil and gas industry have been fully complied with and the statements herein are complete and correct to the best of my knowledge

Signature: Dennis J. Webb
Title: Regional Production Manager Date: 4-13-2012

KCC Office Use ONLY
 Letter of Confidentiality Received
Date: 4/17/12 - 4/17/14
Confidential Release Date: _____
 Wireline Log Received
Geologist Report Received
UIC Distribution
ALT I II III Approved by: NJ Date: 5/8/12

Survey Calculation Program

Nadel & Gussman Energy, LLC
 Haden 1A-6-33 9H
 Sec 6-33S-9E
 Chautauqua Co. KS

M.W.D. OPERATOR: S.Eisenman/B. Slater
 DIRECTIONAL DRILLERS: Billy/Rich S./James

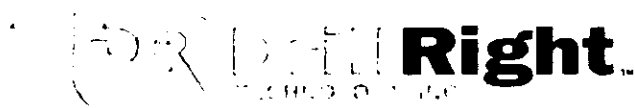
Magnetic Declination: 5.99
 Job #: DR 12-01-013
 Vertical Section 359.32

Minimum Curvature Calculation

No.	Survey Depth	INC	AZM	TVD	N-S	E-W	Vertical Section	DLS/100
Tie	0	0.00	0.00	0.00	0.00	0.00	0.00	0.00
1	364	0.6	204.7	363.99	-1.73	-0.80	-1.72	0.16
2	679	0.5	176.8	678.98	-4.60	-1.41	-4.59	0.09
3	931	0.3	125.7	930.97	-6.09	-0.81	-6.07	0.15
4	1292	0.5	153.7	1291.97	-8.05	0.65	-8.06	0.08
5	1710	1.0	94.7	1709.93	-9.98	5.10	-10.04	0.21
6	1749	0.9	58.4	1748.93	-9.85	5.70	-9.92	1.54
7	1781	2.1	4.0	1780.92	-9.13	5.95	-9.20	5.43
8	1812	3.8	349.0	1811.88	-7.56	5.80	-7.63	5.98
9	1844	5.8	348.7	1843.76	-4.93	5.28	-4.99	6.25
10	1876	8.0	353.4	1875.53	-1.13	4.70	-1.19	7.09
11	1907	10.4	356.5	1906.13	3.80	4.28	3.75	7.90
12	1939	12.9	357.7	1937.47	10.26	3.97	10.21	7.85
13	1970	15.3	357.9	1967.53	17.80	3.68	17.76	7.74
14	2002	18.0	357.6	1998.19	26.96	3.31	26.92	8.44
15	2033	21.1	357.3	2027.39	37.32	2.85	37.29	10.01
16	2065	24.3	356.8	2056.91	49.66	2.21	49.63	10.02
17	2096	27.2	357.9	2084.83	63.11	1.60	63.08	9.48
18	2128	30.1	357.7	2112.91	78.44	1.01	78.42	9.07
19	2160	32.4	358.7	2140.27	95.03	0.49	95.02	7.37
20	2191	35.1	358.8	2166.04	112.24	0.11	112.24	8.71
21	2223	38.4	359.5	2191.68	131.39	-0.17	131.38	10.40
22	2255	42.1	359.4	2216.09	152.06	-0.36	152.05	11.56
23	2286	45.1	359.1	2238.54	173.43	-0.65	173.43	9.70
24	2318	48.7	359.2	2260.40	196.79	-0.99	196.79	11.25
25	2349	51.8	359.4	2280.22	220.62	-1.28	220.62	10.01
26	2381	52.3	359.3	2299.90	245.85	-1.57	245.85	1.58
27	2413	52.3	359.6	2319.47	271.17	-1.81	271.17	0.74
28	2444	52.7	360.0	2338.34	295.76	-1.90	295.76	1.65
29	2476	55.1	359.8	2357.20	321.62	-1.94	321.62	7.52
30	2507	58.2	359.6	2374.24	347.51	-2.08	347.51	8.56
31	2520	59.3	359.4	2380.98	358.62	-2.18	358.62	10.18
32	2577	65.1	359.3	2407.55	409.02	-2.75	409.02	10.18
33	2609	68.6	0.3	2420.13	438.44	-2.85	438.44	10.31

RECEIVED
 MAY 02 2012
 KCC WICHITA

CONFIDENTIAL
 APR 17 2014
 KCC



Survey Calculation Program

Nadel & Gussman Energy, LLC
 Haden 1A-6-33 9H
 Sec 6-33S-9E
 Chautauqua Co. KS

M.W.D. OPERATOR: S.Eisenman/B. Slater
 DIRECTIONAL DRILLERS: Billy/Rich S./James

Magnetic Declination: 5.99

Job #: DR 12-01-013

Vertical Section 359.32

Minimum Curvature Calculation

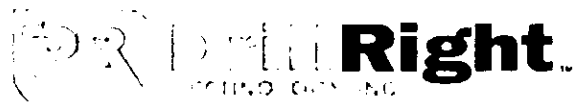
No.	Survey Depth	INC	AZM	TVD	N-S	E-W	Vertical Section	DLS/100
34	2640	71.5	1.5	2430.71	467.57	-2.39	467.56	10.04
35	2672	73.3	1.7	2440.38	498.06	-1.54	498.04	5.66
36	2703	75.3	1.9	2448.77	527.88	-0.60	527.85	6.48
37	2735	77.5	2.0	2456.30	558.97	0.46	558.92	6.88
38	2767	79.4	2.1	2462.70	590.30	1.58	590.24	5.95
39	2798	82.0	2.1	2467.71	620.87	2.70	620.79	8.39
40	2830	85.1	1.4	2471.31	652.65	3.67	652.56	9.93
41	2861	87.2	0.0	2473.39	683.57	4.05	683.47	8.14
42	2893	88.1	0.0	2474.70	715.54	4.05	715.45	2.81
43	2924	89.4	0.1	2475.38	746.54	4.08	746.43	4.21
44	2956	90.1	0.4	2475.52	778.53	4.22	778.43	2.38
45	2988	90.8	359.7	2475.26	810.53	4.24	810.43	3.09
46	3019	91.1	359.7	2474.75	841.53	4.08	841.42	0.97
47	3051	91.4	359.8	2474.05	873.52	3.94	873.41	0.99
48	3082	90.6	359.4	2473.51	904.52	3.73	904.41	2.89
49	3114	90.6	359.2	2473.18	936.51	3.34	936.41	0.62
50	3146	90.2	358.9	2472.95	968.51	2.81	968.40	1.56
51	3177	90.4	358.8	2472.79	999.50	2.18	999.40	0.72
52	3208	90.1	358.6	2472.65	1030.49	1.48	1030.40	1.16
53	3240	90.1	358.6	2472.60	1062.48	0.70	1062.40	0.00
54	3271	89.1	357.8	2472.82	1093.46	-0.28	1093.39	4.13
55	3302	89.2	358.1	2473.28	1124.44	-1.38	1124.38	1.02
56	3334	89.3	357.7	2473.69	1156.42	-2.56	1156.37	1.29
57	3365	89.5	357.7	2474.02	1187.39	-3.80	1187.35	0.65
58	3397	90.1	357.8	2474.13	1219.36	-5.06	1219.34	1.90
59	3428	90.1	357.8	2474.08	1250.34	-6.25	1250.33	0.00
60	3460	90.4	357.7	2473.94	1282.32	-7.50	1282.32	0.99
61	3491	89.8	358.2	2473.88	1313.30	-8.61	1313.31	2.52
62	3523	90.0	358.3	2473.94	1345.28	-9.59	1345.30	0.70
63	3554	90.4	358.3	2473.83	1376.27	-10.51	1376.30	1.29
64	3586	90.9	358.3	2473.47	1408.25	-11.46	1408.29	1.56
65	3618	90.0	358.7	2473.22	1440.24	-12.30	1440.28	0.88
66	3649	90.3	358.7	2473.13	1471.23	-13.00	1471.28	0.87
67	3681	90.0	358.4	2473.05	1503.22	-13.81	1503.28	1.33

RECEIVED
 MAY 02 2012
 KCC WICHITA

CONFIDENTIAL

APR 17 2014

KCC



Survey Calculation Program

Nadel & Gussman Energy, LLC
 Haden 1A-6-33 9H
 Sec 6-33S-9E
 Chautauqua Co. KS

M.W.D. OPERATOR: S.Eisenman/B. Slater
 DIRECTIONAL DRILLERS: Billy/Rich S./James

Magnetic Declination: 5.99
 Job #: DR 12-01-013
 Vertical Section 359.32

Minimum Curvature Calculation

No.	Survey Depth	INC	AZM	TVD	N-S	E-W	Vertical Section	DLS/100
68	3713	89.6	358.4	2473.16	1535.21	-14.70	1535.27	1.25
69	3744	89.7	358.5	2473.35	1566.20	-15.54	1566.27	0.46
70	3776	90.4	358.5	2473.32	1598.19	-16.38	1598.27	2.19
71	3807	89.7	358.8	2473.30	1629.18	-17.11	1629.26	2.46
72	3839	89.4	359.5	2473.55	1661.17	-17.58	1661.26	2.38
73	3870	89.6	359.5	2473.82	1692.17	-17.85	1692.26	0.65
74	3903	89.9	359.5	2473.96	1725.17	-18.14	1725.26	0.91
75	3933	90.2	359.2	2473.94	1755.17	-18.48	1755.26	1.41
76	3965	89.4	359.3	2474.05	1787.16	-18.90	1787.26	2.52
77	3997	89.4	359.0	2474.38	1819.16	-19.38	1819.26	0.94
78	4029	89.5	358.8	2474.69	1851.15	-19.99	1851.26	0.70
79	4060	89.7	358.9	2474.91	1882.14	-20.61	1882.25	0.72
80	4092	89.9	358.7	2475.02	1914.14	-21.28	1914.25	0.88
81	4123	90.2	358.6	2474.99	1945.13	-22.01	1945.25	1.02
82	4155	89.5	358.3	2475.08	1977.11	-22.88	1977.25	2.38
83	4186	89.6	358.0	2475.32	2008.10	-23.88	2008.24	1.02
84	4218	89.9	358.3	2475.46	2040.08	-24.91	2040.23	1.33
85	4249	90.2	357.8	2475.43	2071.06	-25.97	2071.22	1.88
86	4281	90.4	357.6	2475.26	2103.04	-27.25	2103.21	0.88
87	4312	89.6	358.2	2475.26	2134.01	-28.39	2134.20	3.23
88	4344	89.5	358.2	2475.52	2166.00	-29.39	2166.19	0.31
89	4376	89.2	358.7	2475.88	2197.98	-30.26	2198.19	1.82
90	4407	89.5	358.9	2476.23	2228.98	-30.91	2229.19	1.16
91	4439	90.2	358.9	2476.31	2260.97	-31.52	2261.18	2.19
92	4470	91.0	359.2	2475.99	2291.96	-32.04	2292.18	2.76
93	4502	91.5	359.1	2475.29	2323.95	-32.51	2324.17	1.59
94	4533	91.8	359.2	2474.40	2354.94	-32.97	2355.16	1.02
95	4565	92.1	358.8	2473.31	2386.91	-33.53	2387.14	1.56
96	4596	92.3	358.7	2472.12	2417.88	-34.20	2418.12	0.72
97	4628	92.6	358.8	2470.75	2449.84	-34.90	2450.09	0.99
98	4659	93.1	358.6	2469.21	2480.80	-35.60	2481.05	1.74
99	4691	93.4	358.7	2467.40	2512.74	-36.36	2512.99	0.99
100	4723	92.7	358.4	2465.69	2544.68	-37.17	2544.94	0.38
101	4754	92.7	358.4	2464.23	2575.64	-38.03	2575.91	0.03

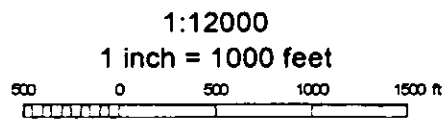
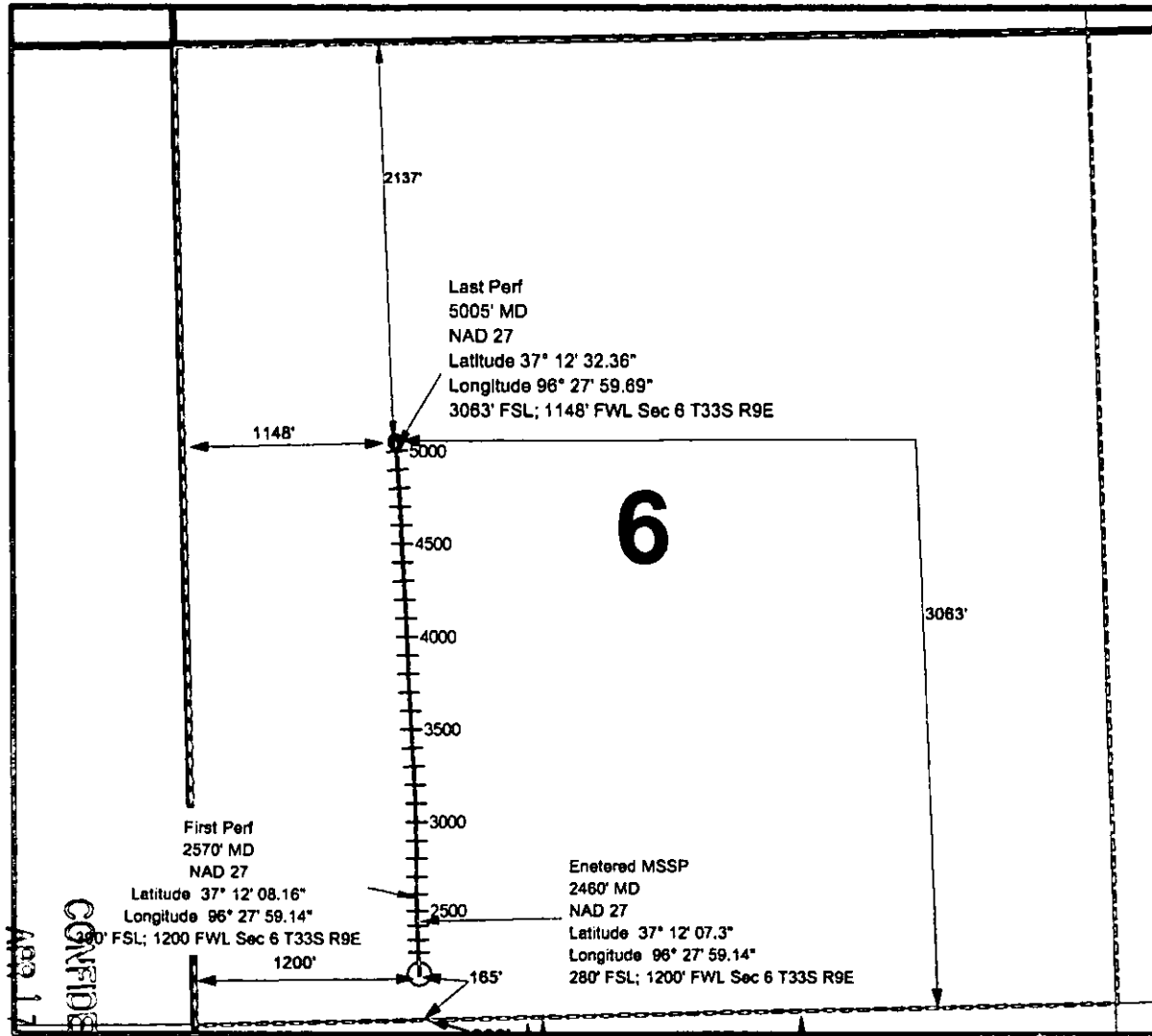
RECEIVED
 MAY 02 2012
 KCC WICHITA

CONFIDENTIAL
 APR 17 2014
 KCC

Haden 1A-6-33-9H

Surface Hole Location
 NAD 27 DMS
 Latitude 37° 12' 03.3"
 Longitude 96° 27' 59.3"
 165' FSL 1200' FWL Sec 6 T33S R9E

Bottom Hole Location
 NAD 27 DMS
 Latitude 37° 12' 32.724"
 Longitude 96° 27' 59.6874"
 2137' FNL; 1148' FWL Sec 6 T33S R9E



Red Line denotes dedicated acreage to well

KCC

RECEIVED
 MAY 02 2012
 CONFIDENTIAL
 APR 17 2014
 KCC WICHITA