

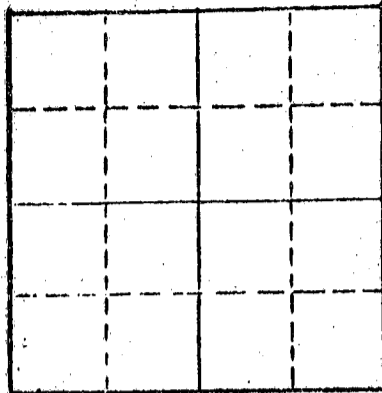
15-135-20528-00-00

STATE OF KANSAS
STATE CORPORATION COMMISSION

Form CP-4

WELL PLUGGING RECORD

Give All Information Completely
Make Required Affidavit
Mail or Deliver Report to:
Conservation Division
State Corporation Commission
P. O. Box 17027
Wichita, Kansas 67217
NORTH



Locate well correctly on above
Section Flat

Ness County, Sec. 36 Twp. 17 Rge. 24 (E) (W)
Location at "NE/CNWSW" or footage from lines SW SW
Lease Owner Thunderbird Drilling, Inc.
Lease Name Yost C#2 Well No.
Office Address Ellinwood, Kansas 67526
Character of Well (completed as Oil, Gas or Dry Hole)
Date well completed 10
Application for plugging filed 10
Application for plugging approved 10
Plugging commenced 1/18/74 10
Plugging completed 1/23/74 10
Reason for abandonment of well or producing formation depleted.
If a producing well is abandoned, date of last production 10
Was permission obtained from the Conservation Division or its agents before plugging was commenced? YBS

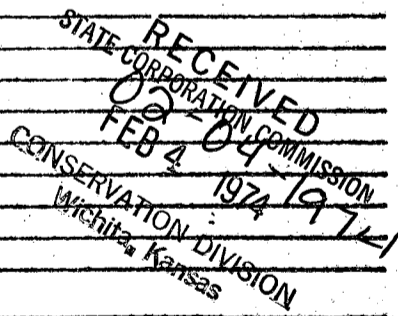
Name of Conservation Agent who supervised plugging of this well Massey
Producing formation Depth to top Bottom Total Depth of Well 4412 Feet
Show depth and thickness of all water, oil and gas formations.

OIL, GAS OR WATER RECORDS				CASING RECORD		
FORMATION	CONTENT	FROM	TO	SIZE	PUT IN	PULLED OUT
				8-5/8	335	none
				5 1/8"	4410	2671

Describe in detail the manner in which the well was plugged, indicating where the mud fluid was placed and the method or methods used in introducing it into the hole. If cement or other plugs were used, state the character of same and depth placed, from feet to feet for each plug set.

Checked bottom, ran sand to 4385', dumped 5 sacks cement. Shot pipe at 3791', 3609', 3516', 2820', 2723', pulled 86 joints. Allied pumped 2 sacks hulls, 30 sacks gel and 120 sacks cement pozmix 6% gel.

PLUGGING COMPLETE.



(If additional description is necessary, use BACK of this sheet)
Name of Plugging Contractor KNIGHT CASING PULLING CO., INC.
Address CHASE, KANSAS

STATE OF KANSAS COUNTY OF RICE ss.
NOEL J. KNIGHT (employee of owner) or (owner or operator) of the above-described well, being first duly sworn on oath, says: That I have knowledge of the facts, statements, and matters herein contained and the log of the above-described well as filed and that the same are true and correct. So help me God.

(Signature) Noel Knight
CHASE, KANSAS
(Address)

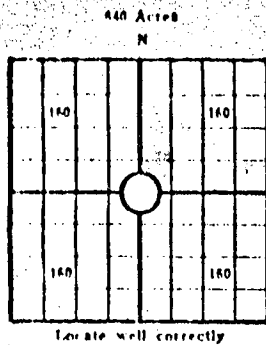
Subscribed and Sworn to before me this 24th day of January, 1974

Margaret Melcher
Notary Public.

My commission expires
MARGARET MELCHER
NOTARY PUBLIC
Rice County, Kansas
My Commission Expires
Feb. 15, 1975

KANSAS CORPORATION COMMISSION
WELL RECORD

(Mail to Kansas Geological Survey, 4150 Monroe Street, Wichita, Kansas 67209)



Lease Name: Yost "C" Well No. 2
 Well Located: SW SW
 SEC 36 TWP 17S RGE 24W
 Operator: Thunderbird Drilling, Inc.
 Address: P. O. Box 18407, Wichita, Ks.
 Elevation: Ground _____ D.F. _____ K.B. 2390
 Type Well: (Oil, gas, dry hole) oil

Drilling Commenced: 12-3 1971 Drilling Completed: 12-12 1971
 Well Completed: 12-22 1971 Total Depth 4411
 Initial Production: 12-27-71

Casing Record

Size: 8 5/8" Set at 335 Size: _____ Set at _____
 Size: 5 1/2" Set at 4409 Size: _____ Set at _____

Liner Record

Size: _____ Set from _____ To _____

Cementing

Casing Size	Sacks	Type Cement and Additives
<u>8 5/8"</u>	<u>250</u>	_____
<u>5 1/2"</u>	<u>100</u>	_____

RECEIVED
STATE CORPORATION COMMISSION

DEC 3 1973
12-03-1973
CONSERVATION DIVISION
Wichita, Kansas

Perforations

Formation	Perforated Interval and Number Shots
_____	_____
_____	_____
_____	_____

Electric Log Run. (Show type log and depths covered)

Gamma Ray Neutron Guard Frac Finder

(Fill in formation and related information on reverse side)

FORMATION, TESTING AND COMPLETION RECORD

Show Drill Stem Tests,
Well Stimulation and
Production Tests.

Formation	Top	Bottom	
Anhydrite	1695		DST #1 4163-4220. Opn. 75". Rec. 70' oil cut mud w/trace of free oil, FP 68-83, BHP 181-204/45". DST #2 4296-4335. Opn. 1 hr. Rec. 20' mud, FP 47-65, BHP 227-115/30". DST #3 4394-4416. Opn. 90". Rec. 2980' clean gassy oil, 60' oil cut mud, 60' muddy water, FP 181-1315, BHP 1315-1315/45".
Geebner	3769		
Toronto	3788		
Lansing	3812		
BKC	4106		
Marmaton	4170		
Ft. Scott	4309		
Cherokee	4334		
Sd.	4407		
T. D.	4411		

FROM	TO	DESCRIPTION
0	335	Clay, blue shale
335	1058	Shale
1058	1068	Anhydrite
1068	1145	Shale and shells
1145	1410	Sand
1410	1703	Shale and shells
1703	1745	Anhydrite
1745	2125	Shale
2125	2688	Lime and shale
2688	2800	Lime
2800	2980	Lime and shale
2980	3155	Lime
3155	3815	Lime and shale
3815	4030	Lime
4030	4220	Lime and shale
4220	4416	Lime
4416		Rotary Total Depth

RECEIVED
STATE CORPORATION COMMISSION

DEC 3 1973

CONSERVATION DIVISION
Wichita, Kansas

