

STATE OF KANSAS - CORPORATION COMMISSION
 PRODUCTION TEST & GOR REPORT

15-077-20219-0000
 SPECIAL TEST

Conservation Division

Form C-5 Revised

TYPE TEST:	Initial	Annual	Workover	Reclassification	TEST DATE:	1-27-86
Company	Anadarko Petroleum Corp.			Lease	Mason B	Well No. 1
County	Harper	Location	1980' from S & W lines	Section	12	Township 33S Range 7W Acres
Field	Hayter	Reservoir	Mississippi	Pipeline Connection	Farmland Industries	
Completion Date	11-24-73	Type Completion(Describe)	Single Oil	Plug Back T.D.	4486'	Packer Set At
Production Method:	Flowing	Pumping X	Gas Lift	Type Fluid Production	API Gravity of Liquid/Oil 32.4	
Casing Size	4-1/2"	Weight	10.5#	I.D.	4.052	Set At 4524'
Tubing Size	2-3/8"	Weight	4.7#	I.D.	1.995'	Set At 4482'
Pretest:						Duration Hrs.
Starting Date	1-27-86	Time		Ending Date	1-28-86	Time 24

OIL PRODUCTION OBSERVED DATA

Producing Wellhead Pressure	Separator Pressure	Choke Size		
Casing: 25	Tubing: 25	20		
Bbls./In.	Tank	Starting Gauge	Ending Gauge	Net Prod. Bbls.
1.67	Size Number	Feet Inches Barrels	Feet Inches Barrels	Water Oil
Pretest:				
Test: *	300	182 2 3	45.09 2 5	48.43 3.34
Test:				

GAS PRODUCTION OBSERVED DATA

Orifice Meter Connections	Orifice Meter Range					
Pipe Taps:	Flange Taps:	Differential:	Static Pressure:			
Measuring Device	Run-Prover-Tester Size	Orifice Size	Meter-Prover-Tester Pressure	Diff. Press. (hw) or (hd)	Gravity Gas (Gg)	Flowing Temp. (t)
Orifice Meter			In.Water In.Merc. Psig or (Pd)			
Critical Flow Prover						
Orifice Well Tester	2.0"	0.5"	4" Av.		.700	60

GAS FLOW RATE CALCULATIONS (R)

Coeff. MCFD (Fb)(Fp)(OWTC)	Meter-Prover Press.(Psia)(Pm)	Extension $\sqrt{hw \times Pm}$	Gravity Factor (Fg)	Flowing Temp. Factor (Ft)	Deviation Factor (Fpv)	Chart Factor (Fd)
12.5			0.9258	1.0	--	--

Gas Prod. MCFD Flow Rate (R): 11.6
 Oil Prod. Bbls./Day: 3
 Gas/Oil Ratio (GOR) = 3867
 Cubic Ft. per Bbl.

The undersigned authority, on behalf of the Company, states that he is duly authorized to make the above report and that he has knowledge of the facts stated therein, and that said report is true and correct. Executed this the 27 day of 19 86

For Offset Operator

For State

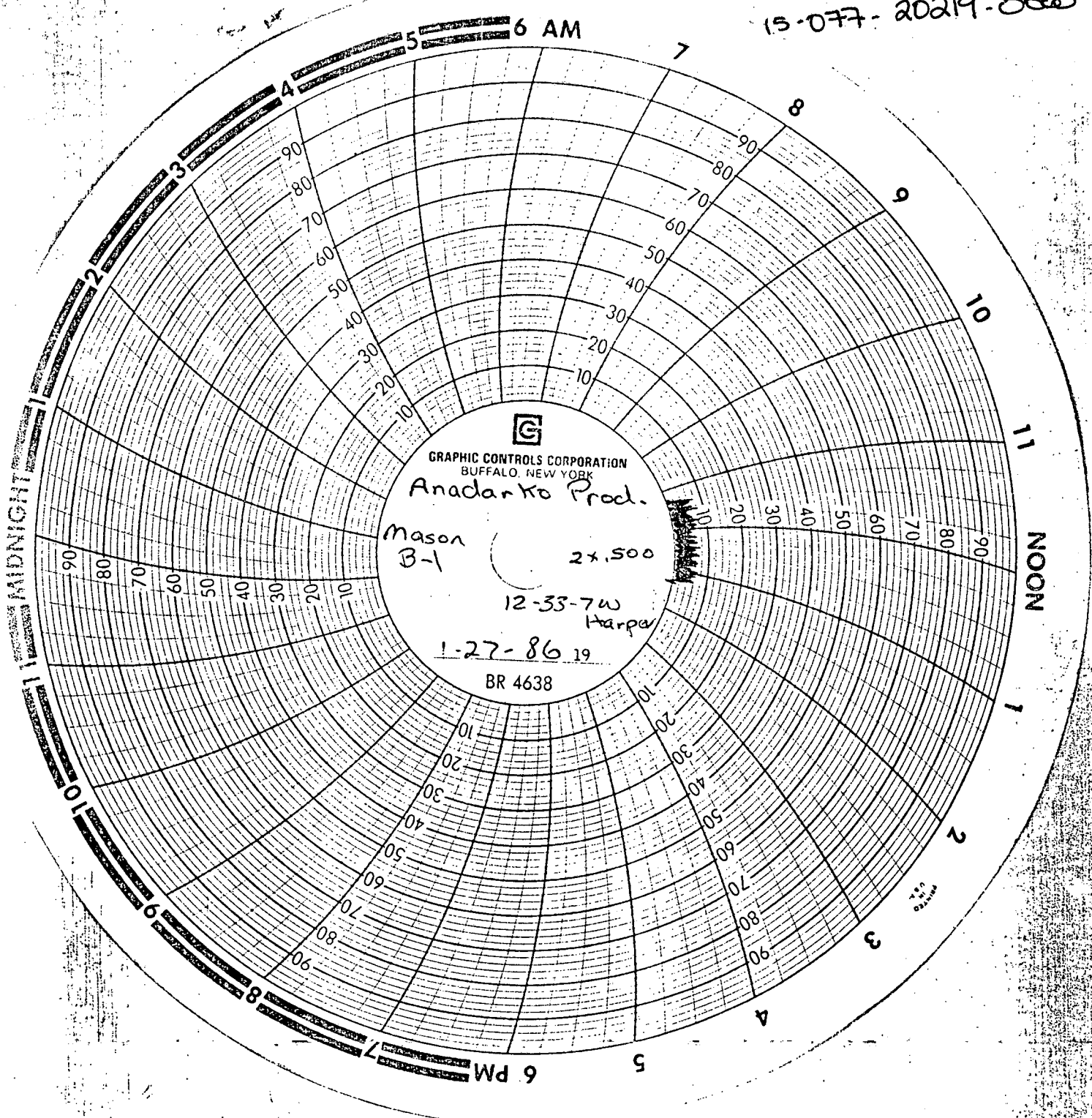
For Company

RECEIVED STATE CORPORATION COMMISSION

APR 24 1986

CONSERVATION DIVISION
 Wichita, Kansas

15-077-20219-0000



This is measured in inches of water...

WICHITA
 STATE CORPORATION COMMISSION
 APR 24 1986
 CONSERVATION DIVISION
 Wichita, Kansas