

15-051-20,505-0000

TO BE FILED WITH THE STATE CORPORATION COMMISSION PRIOR TO COMMENCEMENT OF WELL

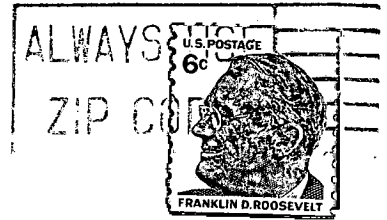
1. Operator Hummon Oil, Incorporated Address 821 Union National Building
2. Lease name JOHNSON Well No. 1 County Ellis
3. Well Location C SW SW NW Sec. 33 Township 11S Range 18W
4. Well to be drilled 330 ft. from nearest lease line.
5. Drilling Contractor H-30, Inc. Address Wichita, Kansas 67202
6. Type of equipment: Rotary  Cable Tool  Approx. date operation to begin August 27, 1969.
7. Well to be drilled for Oil  Gas  Disposal  Input  Estimated Total Depth of Well 3600 ft.
8. Depth of deepest fresh water well within one mile of location none ft. If none exists, write NONE.
9. Ground elevation at location is approx. \_\_\_\_\_ ft. higher or \_\_\_\_\_ ft. lower than ground elevation at water well.
10. Depth of the deepest municipal water well within three miles of location none ft. If none exists, write NONE
11. Operator states that he will set surface pipe at least 25 ft. below all Tertiary or unconsolidated deposits and, taking into consideration differences in ground elevations, that the minimum depth necessary, to the best of his knowledge and belief, to protect all fresh water zones is 100 ft. and operator agrees to set surface pipe at this location to a depth of not less than 215 ft. Alternate 1  Alternate 2 .

REMARKS:

Hold this information until you here from our office

Signature of Operator

Byron E. Hummon, Jr., President



**State Corporation Commission of Kansas  
Conservation Division  
500 Insurance Building  
212 North Market  
Wichita, Kansas 67202**

**(IF PREFERRED, MAIL IN ENVELOPE)**

**RECEIVED  
STATE CORPORATION COMMISSION  
AUG 26 1969  
CONSERVATION DIVISION  
Wichita, Kansas**