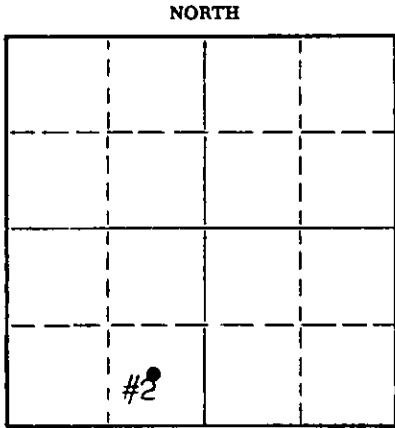


Give All Information Completely
Make Required Affidavit
Mail or Deliver Report to:
Conservation Division
State Corporation Commission
800 Biting Building
Wichita, Kansas

WELL PLUGGING RECORD

Ness County, Sec. 17 Twp. 17S Rge. 23 (EX) (W)

Location as "NE/CNW/SW" or footage from lines C SE SW
Lease Owner Mull Drilling Company, Inc.
Lease Name Oppliger Well No. 2
Office Address 1625 Wichita Plaza, Wichita 2, Kansas
Character of Well (completed as Oil, Gas or Dry Hole) Oil
Date well completed July 24 1963
Application for plugging filed February 23 1965
Application for plugging approved February 23 1965
Plugging commenced February 26 1965
Plugging completed February 27 1965
Reason for abandonment of well or producing formation Low oil production.



Locate well correctly on above Section Plat

If a producing well is abandoned, date of last production February 28 1965
Was permission obtained from the Conservation Division or its agents before plugging was commenced? Yes

Name of Conservation Agent who supervised plugging of this well Eldon Petty
Producing formation Mississippian Depth to top 4419 Bottom ---- Total Depth of Well 4440 Feet
Show depth and thickness of all water, oil and gas formations.

OIL, GAS OR WATER RECORDS

CASING RECORD

FORMATION	CONTENT	FROM	TO	SIZE	PUT IN	PULLED OUT
Miss	Oil & wtr	4419	4440	4 1/2"	4435	None
Surface				8 5/8"	251	None

Describe in detail the manner in which the well was plugged, indicating where the mud fluid was placed and the method or methods used in introducing it into the hole. If cement or other plugs were used, state the character of same and depth placed, from _____ feet to _____ feet for each plug set.

Surface casing was set at 251' and cement circulated to surface. 4 1/2" casing was set at 4435' and cemented with 75 sx. This casing was also cemented, from 1746' to surface by use of a stage tool and 671 sx of cement.

To plug, well was filled with mud from bottom to 720' (mixed 30 sx mud). This was followed with 60 sx cement which filled casing from 720' to surface.

RECEIVED
STATE CORPORATION COMMISSION

MAR 31 1965

3-3-65

CONSERVATION DIVISION
Wichita, Kansas

(If additional description is necessary, use BACK of this sheet)

Name of Plugging Contractor Mull Drilling Company, Inc.
Address 1625 Wichita Plaza, Wichita 2, Kansas

STATE OF KANSAS COUNTY OF SEDGWICK ss.
R. M. Albers (employee of owner) or (~~OWNER~~) of the above-described well, being first duly sworn on oath, says: That I have knowledge of the facts, statements, and matters herein contained and the log of the above-described well as filed and that the same are true and correct. So help me God.

(Signature) R M Albers
1625 Wichita Plaza, Wichita 2, Kansas
(Address)

SUBSCRIBED AND SWORN TO before me this 31st day of March, 1965

My commission expires April 17, 1966
Lola L. Foster Notary Public.

