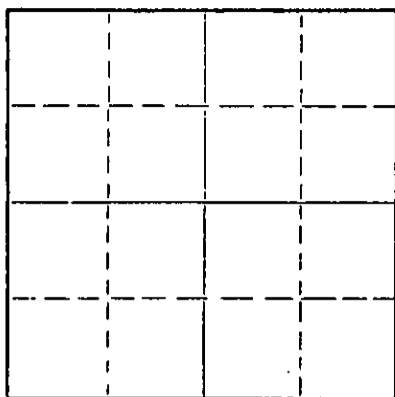


STATE OF KANSAS
STATE CORPORATION COMMISSION

Give All Information Completely
Make Required Affidavit
Mail or Deliver Report to:
Conservation Division
State Corporation Commission
211 No. Broadway
Wichita, Kansas

WELL PLUGGING RECORD

NORTH



Locate well correctly on above
Section Plat

Ellis County, Sec. 4 Twp 11S Rge. (E) 19 (W)
Location as "NE/CNW/SW" or footage from lines SE NE SW
Lease Owner Murfin Drilling Company
Lease Name PULEC Well No. 1
Office Address 617 Union Center - Wichita, Kansas 67202
Character of Well (completed as Oil, Gas or Dry Hole) oil
Date well completed 9-27-63 19
Application for plugging filed 1-17-67 19
Application for plugging approved 1-17-67 19
Plugging commenced 1-17-67 19
Plugging completed 1-17-67 19
Reason for abandonment of well or producing formation Would not make
enough commercial oil.
If a producing well is abandoned, date of last production 12-1-66 19
Was permission obtained from the Conservation Division or its agents before plugging was com-
menced? yes

Name of Conservation Agent who supervised plugging of this well Leo F. Massey - Hays, Kansas
Producing formation Kansas City Depth to top _____ Bottom _____ Total Depth of Well 3682 Feet
Show depth and thickness of all water, oil and gas formations.

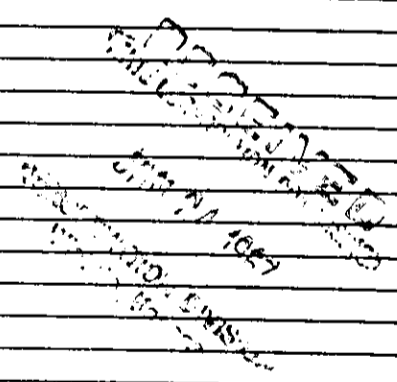
OIL, GAS OR WATER RECORDS

CASING RECORD

FORMATION	CONTENT	FROM	TO	SIZE	PUT IN	PULLED OUT

Describe in detail the manner in which the well was plugged, indicating where the mud fluid was placed and the method or methods used in introducing it into the hole. If cement or other plugs were used, state the character of same and depth placed, from _____ feet to _____ feet for each plug set.

Dumped 20 sacks cement to bottom, 15 sacks jell,
40 sacks cement - standing pressure 250#



(If additional description is necessary, use BACK of this sheet)

Name of Plugging Contractor Murfin Drilling Company
Address 617 Union Center - Wichita, Kansas 67202

STATE OF Kansas, COUNTY OF Sedgwick, ss.
W. R. Murfin (employee of owner) or (owner or operator) of the above-described well, being first duly sworn on oath, says: That I have knowledge of the facts, statements, and matters herein contained and the log of the above-described well as filed and that the same are true and correct. So help me God.

(Signature) MURFIN DRILLING COMPANY
By: W. R. Murfin (Address)

SUBSCRIBED AND SWORN TO before me this 18th day of January, 19 67

Adela Mizener
ADELA MIZENER, Notary Public
My commission expires November 5, 1970 Notary Public.

WELL LOG

COMPANY Whitestone Petroleum Corporation

SEC. 4 T. 11S R. 19W
LOC. SE NE SW

FARM J. Pulec NO. 1

RIG. NO. 11

TOTAL DEPTH 3682

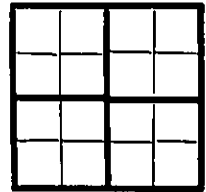
COUNTRY Ellis
KANSAS

COMM. 9-17-63 COMP. 9-27-63

SHOT OR TREATED

CONTRACTOR Murfin Drilling Company

ISSUED



CASINO

20 10
15 8 5/8" 240' w/175 sacks

ELEVATION 2133 KB

12 6
13 5
4 1/2" 3543' w/200 sacks

PRODUCTION Oil

FIGURES INDICATE BOTTOM OF FORMATIONS

- 60 Surface Clay
- 80 Sand
- 600 Shale
- 922 Shale w/sand streaks
- 1150 Sand
- 1450 Red Bed - Shale
- 1464 Red Bed
- 1492 Anhydrite
- 1900 Shale - Shells
- 2075 Lime & Shale
- 2410 Shale & Lime
- 2650 Lime & Shale
- 3072 Shale & Lime
- 3353 Lime & Shale
- 3568 Lime
- 3592 Shale & Lime
- 3643 Conglomerate - Chert & Shale
- 3670 Conglomerate
- 3675 Dolomite
- 3682 Arbuckle
- 3682 RTD

RECEIVED
STATE CORPORATION COMMISSION
JAN 17 1967
CONSERVATION DIVISION
Topeka Kansas

State of KANSAS }
County of SEDGWICK } ss:

I, W. R. Murfin of the Murfin Drilling Company Company
upon oath state that the above and foregoing is a true and correct copy of the log of the J. Pulec #1 well.

Subscribed and sworn to before me this 1st day of October 19 63
W. R. Murfin
W. R. Murfin

My Commission Expires: ADELA MIZENER, Notary Public
My commission expires November 5, 1966
Adela Mizener
NOTARY PUBLIC