

STATE CORPORATION COMMISSION OF KANSAS
OIL & GAS CONSERVATION DIVISION

WELL COMPLETION OR RECOMPLETION FORM
ACO-1 WELL HISTORY

DESCRIPTION OF WELL AND LEASE

Operator: License # 5171
Name TXO Production Corp.
Address 1800 Lincoln Center Bldg.
1660 Lincoln Street
City/State/Zip Denver, CO 80264

Purchaser The Permian Corp.
Tulsa, Oklahoma

Operator Contact Person Frank D. Tsuru
Phone (303) 861-4246

Contractor: License #
Name Murfin Drilling

Wellsite Geologist Richard E. Bacon
Phone (303) 670-0927

Designate Type of Completion

New Well Re-Entry Workover

Oil SWD Temp Abd
 Gas Inj Delayed Comp.
 Dry Other (Core, Water Supply etc.)

If OWWO: old well info as follows:

Operator
Well Name
Comp. Date Old Total Depth

WELL HISTORY

Drilling Method:

Mud Rotary Air Rotary Cable

6/26/85 7/5/85 7/22/85
Spud Date Date Reached TD Completion Date

5270' 5232'
Total Depth PBDT

Amount of Surface Pipe Set and Cemented at 474 feet
Multiple Stage Cementing Collar Used? Yes No
If yes, show depth set...feet
if alternate 2 completion, cement circulated
from...feet depth to...w/...SX cmt

API NO. 15-071-20,371-0000

County Greeley

SW SE NW Sec. 6 Twp. 16 Rge. 42 East West

2970 Ft North from Southeast Corner of Section
3630 Ft West from Southeast Corner of Section
(Note: Locate well in section plat below)

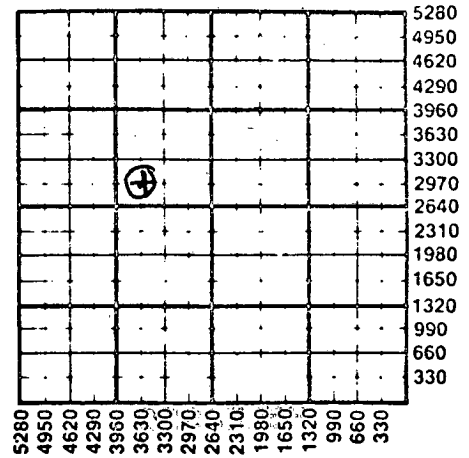
Lease Name Edsall Well # G-2

Field Name S.W. Stockholm

Producing Formation Lower Morrow

Elevation: Ground 3895 KB 3905

Section Plat



WATER SUPPLY INFORMATION

Disposition of Produced Water: Disposal Repressuring
Docket #

Questions on this portion of the ACO-1 call:
Water Resources Board (913) 296-3717

Source of Water:
Division of Water Resources Permit #

Groundwater...Ft North from Southeast Corner
(Well) ...Ft West from Southeast Corner of
Sec Twp Rge East West

Surface Water...Ft North from Southeast Corner
(Stream, pond etc)...Ft West from Southeast Corner
Sec Twp Rge East West

Other (explain).....
(purchased from city, R.W.D. #)

INSTRUCTIONS: This form shall be completed in duplicate and filed with the Kansas Corporation Commission, 200 Colorado Derby Building, Wichita, Kansas 67202, within 90 days after completion or recompletion of any well. Rule 82-3-130 and 82-3-107 apply.

Information on side two of this form will be held confidential for a period of 12 months if requested in writing and submitted with the form. See rule 82-3-107 for confidentiality in excess of 12 months. One copy of all wireline logs and drillers time log shall be attached with this form. Submit CP-4 form with all plugged wells. Submit CP-111 form with all temporarily abandoned wells.

All requirements of the statutes, rules and regulations promulgated to regulate the oil and gas industry have been fully complied with and the statements herein are complete and correct to the best of my knowledge.

Signature Frank D. Tsuru
Title Drilling & Production Engineer Date 9/4/85

Subscribed and sworn to before me this 4 day of September 1985.

Notary Public Nada J. Branson

Date Commission Expires Dec. 14, 1986
9220 Perry St. Westminster, CO 80030

K.C.C. OFFICE USE ONLY
 Letter of Confidentiality Attached
 Wireline Log Received
 Drillers Timelog Received
Distribution
 KCC SWD/Rep NGPA
 KGS Plug Other (Specify)

Form ACO-1 (7-84) STATE CORPORATION COMMISSION

1-23-86
JAN 23 1986

CONSERVATION DIVISION

Operator Name TXO Production Corp. Lease Name Edsall Well # G-2

Sec. 6 Twp. 16S Rge. 42 East West County Greeley

WELL LOG

INSTRUCTIONS: Show important tops and base of formations penetrated. Detail all cores. Report all drill stem tests giving interval tested, time tool open and closed, flowing and shut-in pressures, whether shut-in pressure reached static level, hydrostatic pressures, bottom hole temperature, fluid recovery, and flow rates if gas to surface during test. Attach extra sheet if more space is needed. Attach copy of log.

Drill Stem Tests Taken Yes No
 Samples Sent to Geological Survey Yes No
 Cores Taken Yes No

Formation Description
 Log Sample

Name	Top	Bottom
Morrow	5050	
Lower Morrow Limestone	5170	
Mississippian	5206	

RELEASED

NOV 07 1986

FROM CONFIDENTIAL

CASING RECORD <input checked="" type="checkbox"/> New <input type="checkbox"/> Used Report all strings set-conductor, surface, intermediate, production, etc.							
Purpose of String	Size Hole Drilled	Size Casing Set (in O.D.)	Weight Lbs/Ft.	Setting Depth	Type of Cement	#Sacks Used	Type and Percent Additives
Surface	12 1/4"	8-5/8"	24 1/2		lite/Cl H	250	3% CaCl ₂
PERFORATION RECORD				Acid, Fracture, Shot, Cement Squeeze Record			
Shots Per Foot	Specify Footage of Each Interval Perforated			(Amount and Kind of Material Used)		Depth	
	None						
TUBING RECORD							
Size	Set At	Packer at	Liner Run	<input type="checkbox"/> Yes <input type="checkbox"/> No			
Date of First Production		Producing Method					
P & A'd		<input type="checkbox"/> Flowing <input type="checkbox"/> Pumping <input type="checkbox"/> Gas Lift <input type="checkbox"/> Other (explain... P&A)					
Estimated Production Per 24 Hours		Oil	Gas	Water	Gas-Oil-Ratio		Grav
		Bbls	MCF	Bbls	CFPB		

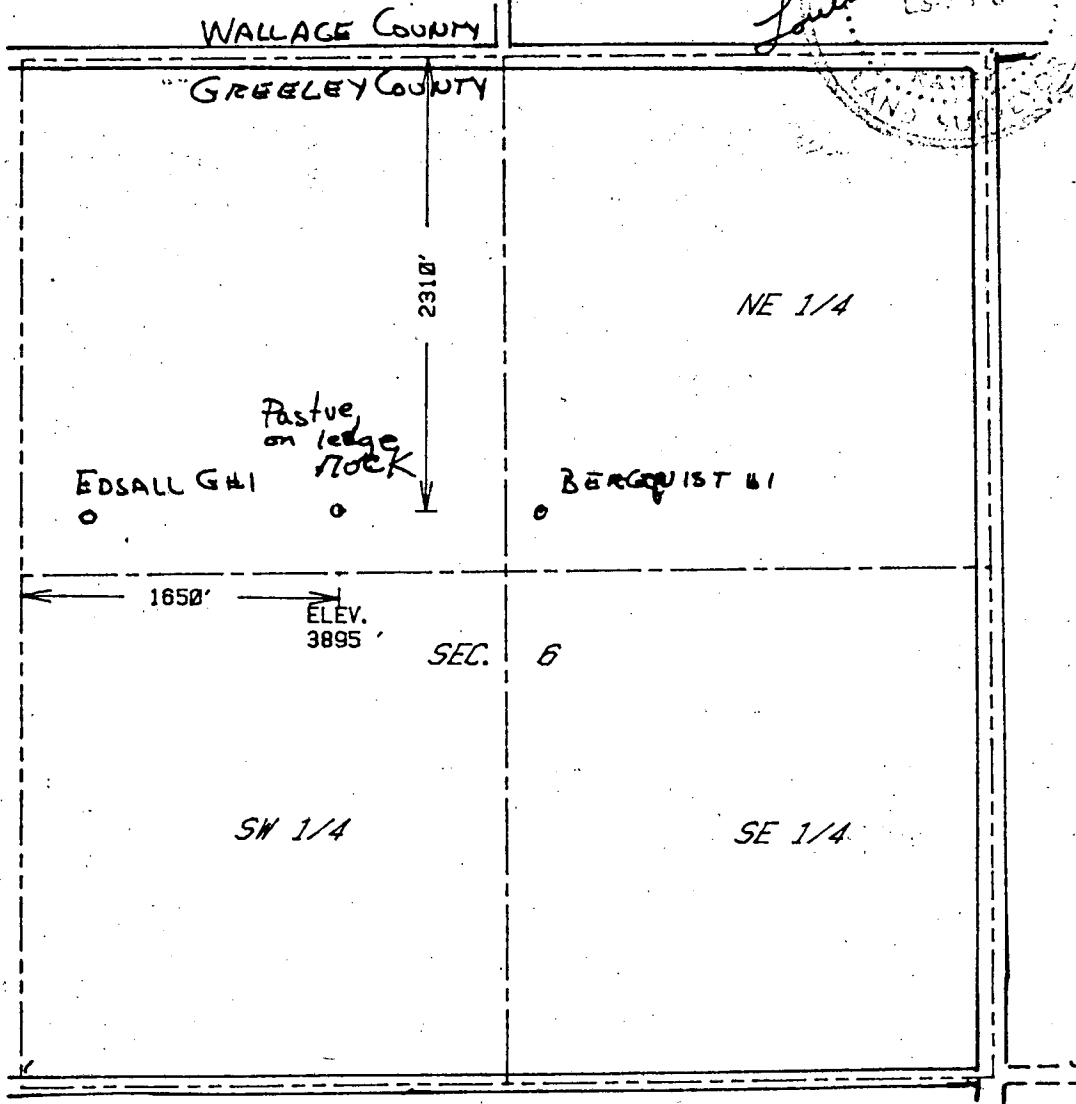
METHOD OF COMPLETION

Production Interval

Disposition of gas: Vented Oper Hole Perforation
 Sold Other (Specify)
 used on Lease Dually Completed Commingled

The accompanying plat is an accurate representation showing the location of a proposed well. This location may be described as a point 2310 feet south of the north line, and 1650 feet east of the west line of Section 6, Township 16 S Range 42 W of the 6th P.M., GREELEY County, KANSAS. The surface elevation at this point is 3895 feet m.s.l.

Louis B. Harmon
LS 718
LAND SURVEYOR



SCALE - 1"=1000'

- SURVEYED POINT
- REFERENCE STAKE < 330 'S,
- NW 1/4 SEC. 6, T 16 S, R 42 W.

RECEIVED
STATE CORPORATIONS COMMISSION
JAN 23 1985
CONSERVATION DIVISION

HARMON
ENGINEERING
SERVICES

EDSALL G#2

TXO PRODUCTION CORP

GREELEY CO., KANSAS 6 JUNE 1985



TXO PRODUCTION CORP.

1800 LINCOLN CENTER BUILDING
DENVER, COLORADO 80264

TELEPHONE (303) 861-4246

15-071-20371-0000

December 17, 1985

KANSAS STATE CORPORATION COMMISSION
200 Colorado Derby Building
202 W. 1st Street
Wichita, Kansas 67202

Re: Edsall "G" #2
Sec. 6, T16S-R42W
Greeley County, Kansas

Gentlemen:

Enclosed please find Form CO-7 (Plat and Certification of Acreage Attributable to an Oil Well) and the engineering services plat regarding the above referenced well.

Should you have any questions concerning this information, please contact me at the above number.

Sincerely,

TXO PRODUCTION CORP.

Frank D. Tsuru
Drilling & Production Engineer

FDT:ms

RECEIVED
STATE CORPORATION COMMISSION
DEC 19 1985
CONSERVATION DIVISION
Wichita, Kansas



PLAT AND CERTIFICATION OF ACREAGE ATTRIBUTABLE TO AN OIL WELL

State Corporation Commission, Conservation Division
200 Colorado Derby Bldg. Wichita, Kansas 67202

15-071-20371-0000

OPERATOR TXD PRODUCTION CORP

LOCATION OF WELL:

LEASE EDSALL "G"

2310' feet from the NORTH line

1650' feet from the WEST line

WELL NUMBER 2

Of the NW/4 of Sec 6 T.16S R.42W

FIELD S.W. STOCKHOLM

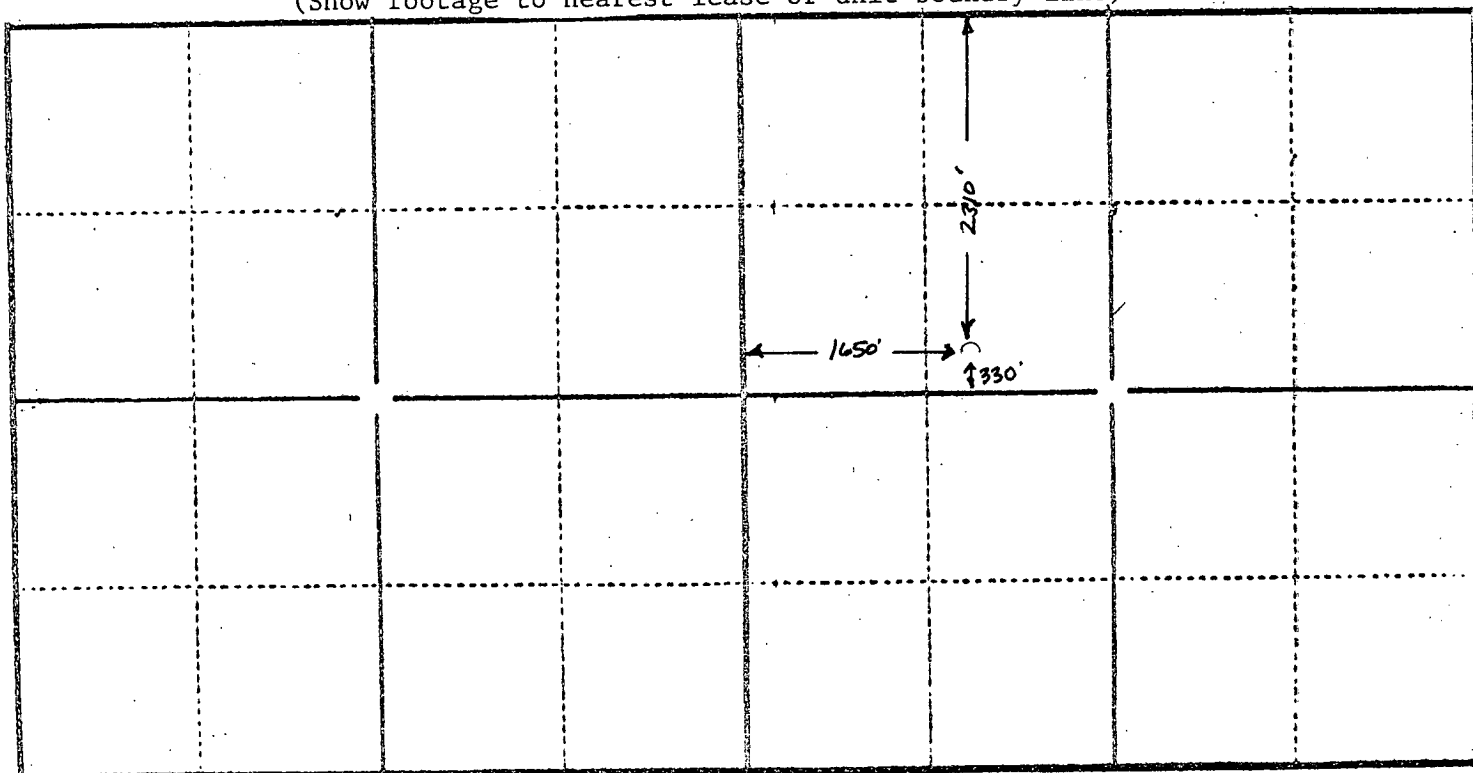
COUNTY GREELEY COUNTY

*NUMBER OF ACRES
ATTRIBUTABLE TO WELL 20

DESCRIPTION OF ACREAGE:
NW/4 OF SEC 6, T16S-R42W

P L A T

(Show location of Well and outline attributable acreage)
(Show footage to nearest lease or unit boundary line)



The undersigned hereby certifies that he is Frank D. Tsuru for TXD Production Corp., a duly authorized agent, that all information shown hereon is true and correct to the best of his knowledge and belief, and that all acreage claimed as attributable to the well named herein is held by production from that well.

Frank D. Tsuru

Suscribed and sworn to before me on this 17 day of December, 1985.

Nada J. Branson
Notary Public

My Commission expires December 14, 1986

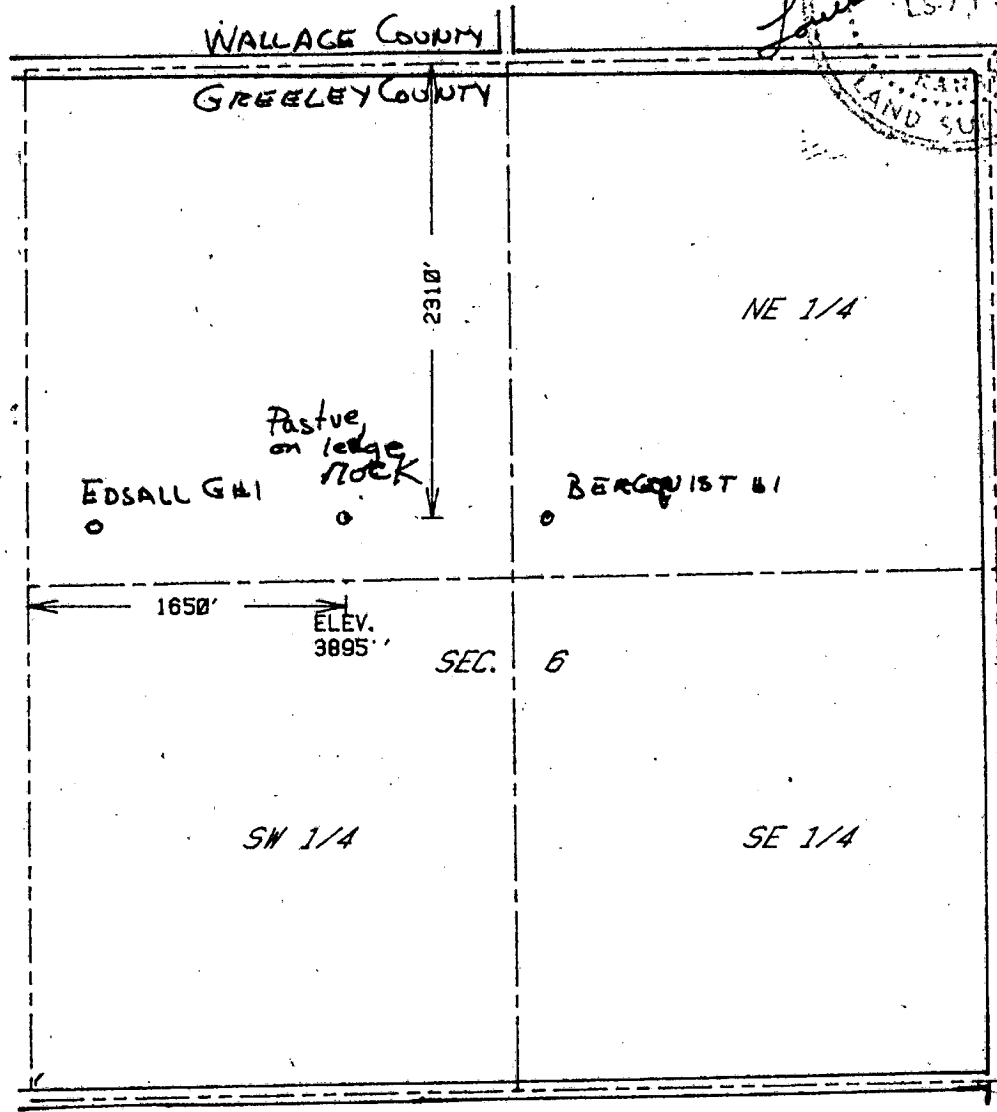
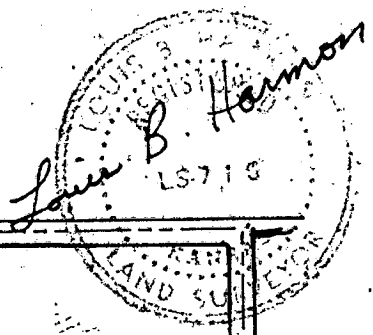


RECEIVED
STATE CORPORATION COMMISSION

DEC 19 1985

CONSERVATION DIVISION
Wichita, Kansas

The accompanying plat is an accurate representation showing the location of a proposed well. This location may be described as a point 2310 feet south of the north line, and 1650 feet east of the west line of Section 6, Township 16 S Range 42 W of the 6th P.M., GREELEY County, KANSAS. The surface elevation at this point is 3895 feet m.s.l.



RECEIVED
STATE CORPORATION COMMISSION
DEC 19 1985
CONSERVATION DIVISION
Wichita, Kansas

SCALE - 1"=1000'

- SURVEYED POINT
- REFERENCE STAKE < 330' S, ...
- NW 1/4 SEC. 6, T 16 S, R 42 W

HARMON
ENGINEERING
SERVICES

EDSALL G#2

TXO PRODUCTION CORP

GREELEY CO., KANSAS 6 JUNE 1985

*Cmt sleeve will be cmt'd within 120 hrs.

CARD MUST BE TYPED

State of Kansas
NOTICE OF INTENTION TO DRILL
(see rules on reverse side)

CARD MUST BE SIGNED

Starting Date: 7 month 5 day 85 year

API Number 15- 071-20,371-0000

OPERATOR: License # ~~5101~~ 5171
Name TXO Production Corp.
Address 1800 Lincoln Center Bldg.
City/State/Zip Denver, Colorado 80264
Contact Person Frank D. Tsuru
Phone (303) 861-4246

SE. NW. Sec. 6, Twp. 16. S, Rge. 42
2970 Ft North from Southeast Corner of Section
3630 Ft West from Southeast Corner of Section
(Note: Locate well on Section Plat on reverse side)

233 CONTRACTOR: License # Unknown
Name
City/State

Nearest lease or unit boundary line 330 feet.
County Greeley
Lense Name Edsall "G" Well# 2
Domestic well within 330 feet: yes no
Municipal well within one mile: yes no

Well Drilled For: Well Class: Type Equipment:
X Oil Swd Infield Mud Rotary
 Gas Inj Pool Ext. Air Rotary
 OWWO Expl Wildcat Cable

Depth to Bottom of fresh water 400 feet
Lowest usable water formation Cheyenne
Depth to Bottom of usable water 1900 feet
Surface pipe by Alternate: 1 2
Surface pipe to be set 450 feet
Conductor pipe if any required None feet
Ground surface elevation GL: 3895 feet MSI.
This Authorization Expires 12-28-85
Approved By 6-28-85

If OWWO: old well info as follows:
Operator
Well Name
Comp Date Old Total Depth
Projected Total Depth 5300 feet
Projected Formation at TD Mississippian
Expected Producing Formations Morrow

I certify that we will comply with K.S.A. 55-101, et seq., plus eventually plugging hole to K.C.C. specifications.

Date 7-15-85 Signature of Operator or Agent Frank D. Tsuru/NB
Frank D. Tsuru Title Drlg. & Prod. Engineer

REH for KDHE NO
Form C-1 4/84

RECEIVED
STATE CORPORATION COMMISSION

AUG 2 1985

CONSERVATION DIVISION
Wichita, Kansas